

S.Pietro di Feletto 06/05/2005

SUBJECT : Changes on transmitter ERONE type SETW318AM2

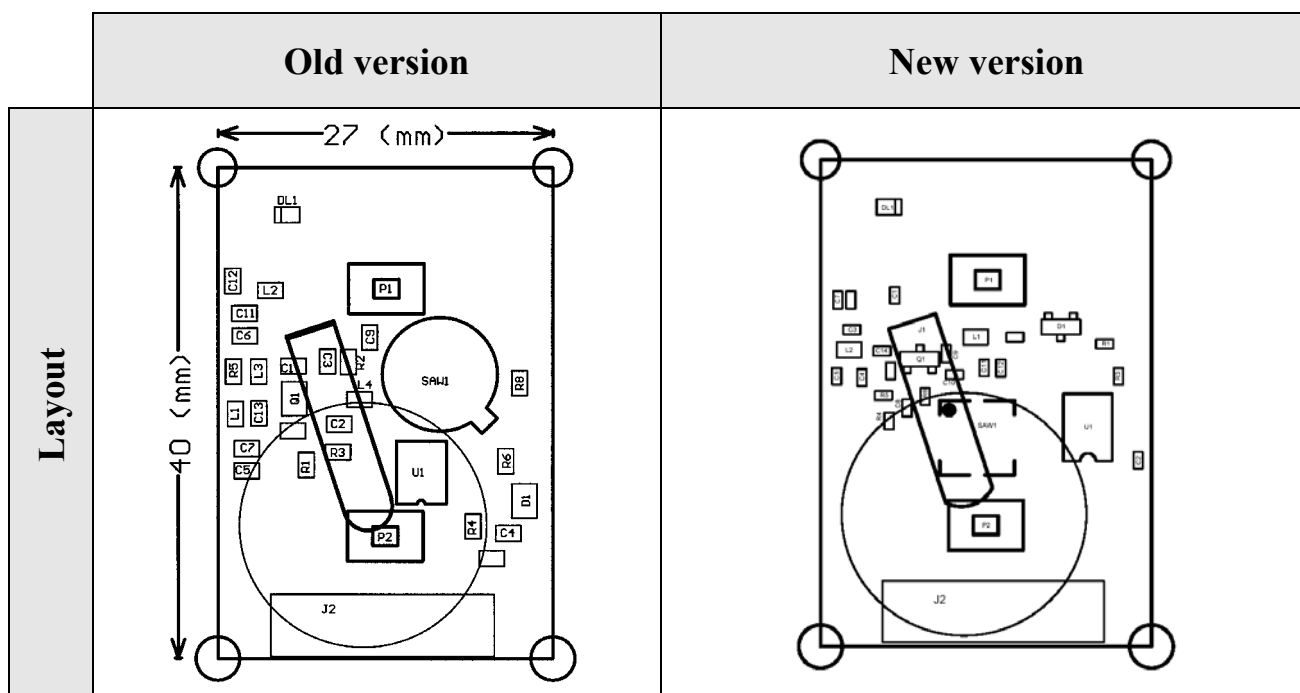
The changement has involved only the microprocessor for cost reason, in order to realize a cost-effective product.

The circuit of the transmitter ERONE type SETW318AM2 has been changed with the following modifications:

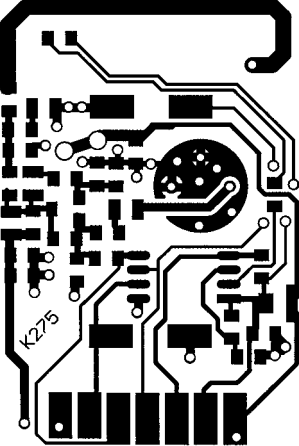
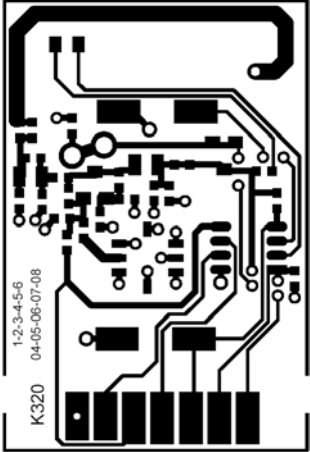
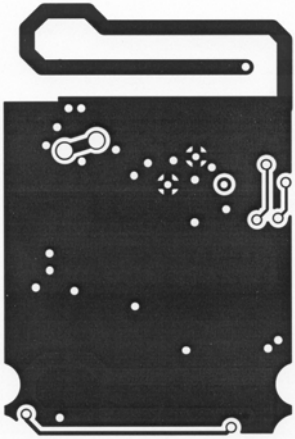
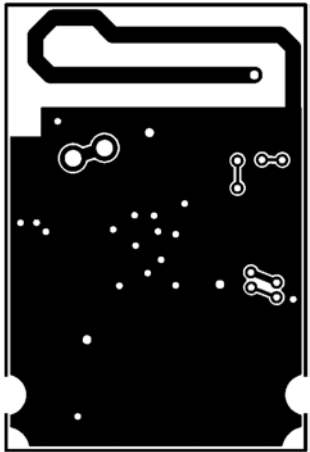
- 1) the microprocessor has been changed from the type Microchip PIC 12C508 to the type Microchip PIC 12F629;
 - 2) as consequence of this, has been changed the PCB of the transmitter, and the layout;
 - 3) the battery contact has been changed;
 - 4) The Saw Resonator has been changed as packaging from PTH to SMT
- ❑ The operating frequency has remained the same
 - ❑ The digital frame emitted has remained the same
 - ❑ The external aspect and the dimensions of the transmitter have remained the same

1 DOCUMENT REFERENCE

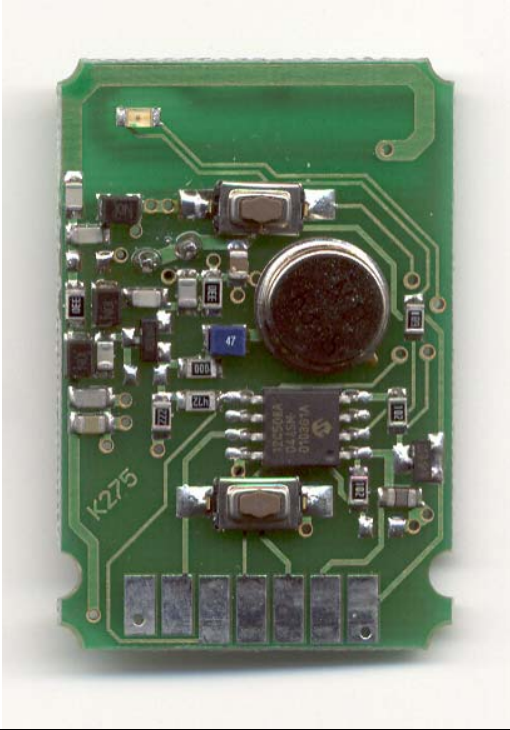
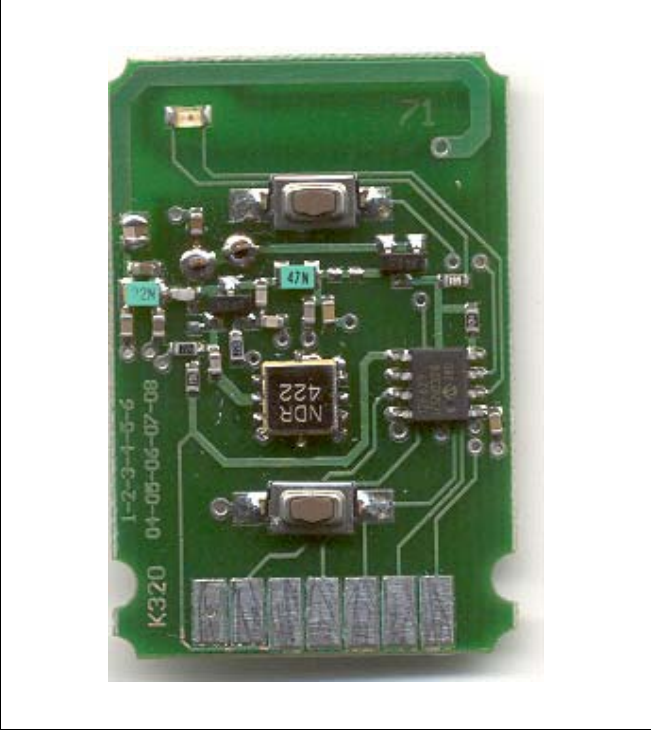

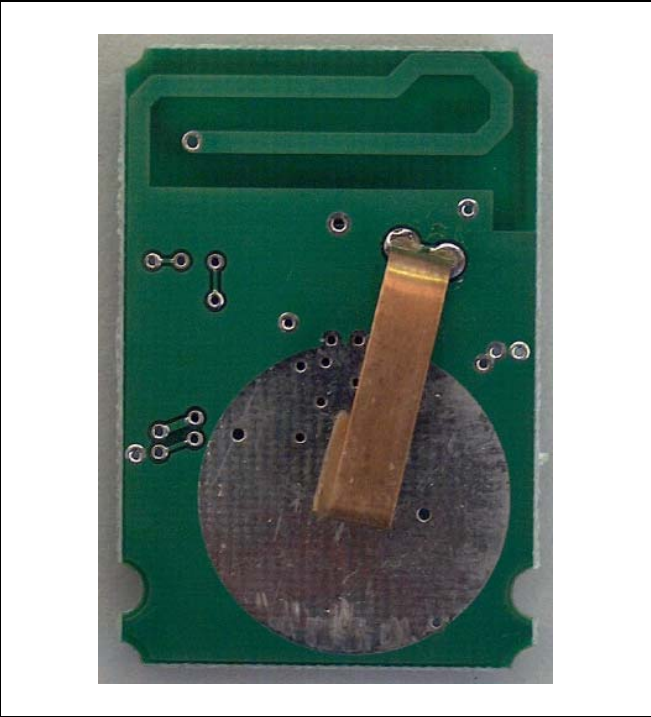
| | Old version | New version |
|--|------------------------------------|------------------------------------|
| | TCF-052 Rev.2 issued on 02/08/2001 | TCF-084 Rev.0 issued on 22/04/2005 |

2 INTERNAL LAYOUT

3 PCB

| | Old version | New version |
|------------|--|--|
| PCB side A |  The image shows the top surface of the old PCB. It features a complex layout of copper traces, pads, and vias. A circular pad is located in the upper right quadrant. A label 'K275' is visible near the bottom left corner. The board has a rectangular shape with a notch on the right side. |  The image shows the top surface of the new PCB. It has a similar layout to the old version but with several modifications. A label 'K320' is visible near the bottom left corner. A date and version code '1-2-3-4-5-6 04-05-06-07-08' are printed vertically on the left side. The board has a rectangular shape with a notch on the right side. |
| PCB side B |  The image shows the bottom surface of the old PCB. It is mostly black with some white copper traces and pads visible. The layout is symmetrical to the top surface. |  The image shows the bottom surface of the new PCB. It is mostly black with some white copper traces and pads visible. The layout is symmetrical to the top surface. |

4 PHOTOS

| | Old version | New version |
|------------|--|--|
| PCB side A |  A photograph of the old version of the PCB side A. It features a green PCB with various electronic components including a large circular component, several integrated circuits, and surface-mount components. The text 'K275' is visible on the bottom left. |  A photograph of the new version of the PCB side A. It features a green PCB with various electronic components including a large circular component, several integrated circuits, and surface-mount components. The text 'K320' and '1-2-3-4-5-6' are visible on the bottom left. |
| PCB side B |  A photograph of the old version of the PCB side B. It features a green PCB with a large circular component and a metal strip with a cross symbol. The text '1-2-3-4-5-6' and 'K320' are visible on the top left. |  A photograph of the new version of the PCB side B. It features a green PCB with a large circular component and a metal strip with a cross symbol. The text '1-2-3-4-5-6' and 'K320' are visible on the top left. |