

S.Pietro di Feletto 06/05/2005

SUBJECT : Changes on transmitter ERONE type SETW295AM2

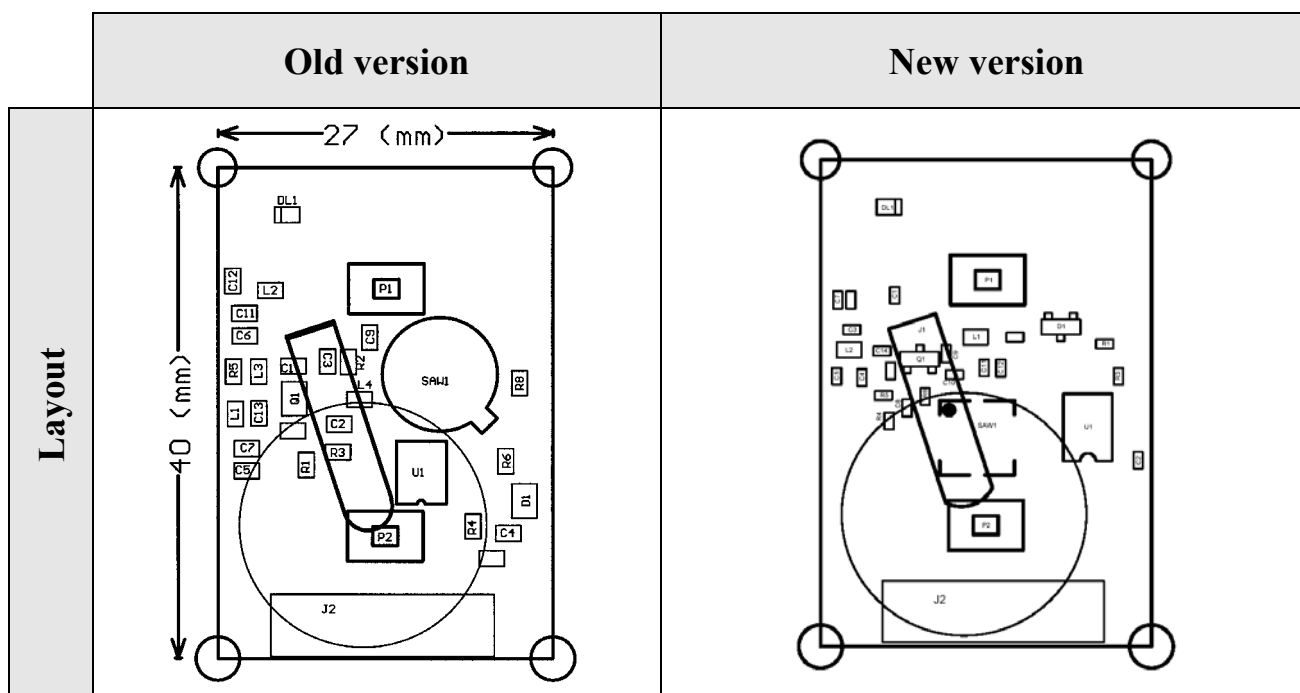
The changement has involved only the microprocessor for cost reason, in order to realize a cost-effective product.

The circuit of the transmitter ERONE type SETW295AM2 has been changed with the following modifications:

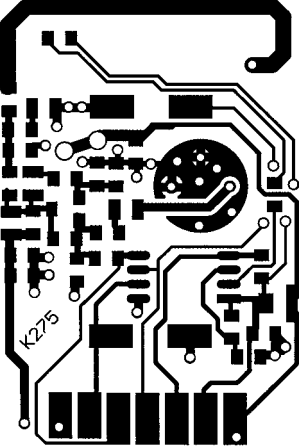
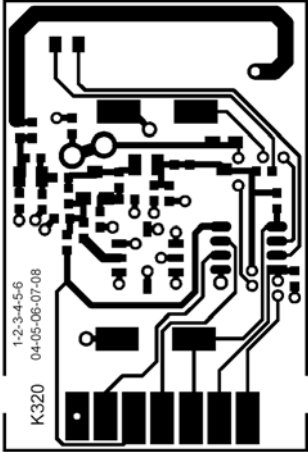
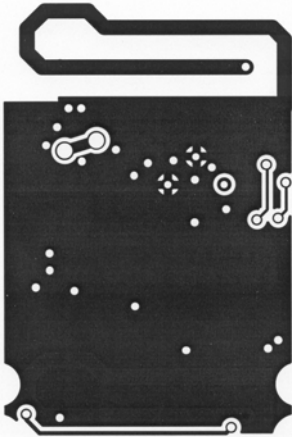
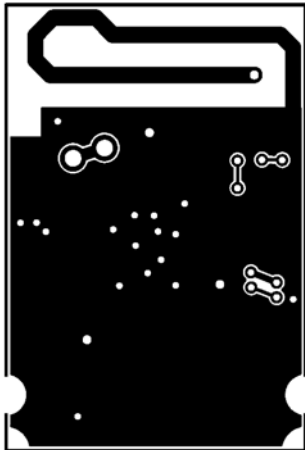
- 1) the microprocessor has been changed from the type Microchip PIC 12C508 to the type Microchip PIC 12F629;
 - 2) as consequence of this, has been changed the PCB of the transmitter, and the layout;
 - 3) the battery contact has been changed;
 - 4) The Saw Resonator has been changed as packaging from PTH to SMT
- ❑ The operating frequency has remained the same
 - ❑ The digital frame emitted has remained the same
 - ❑ The external aspect and the dimensions of the transmitter have remained the same

1 DOCUMENT REFERENCE


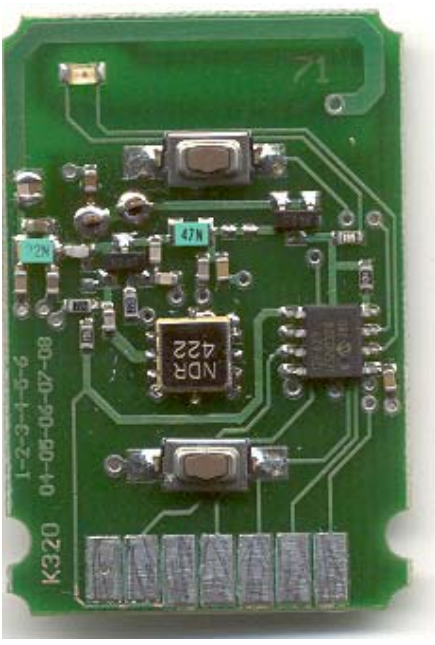

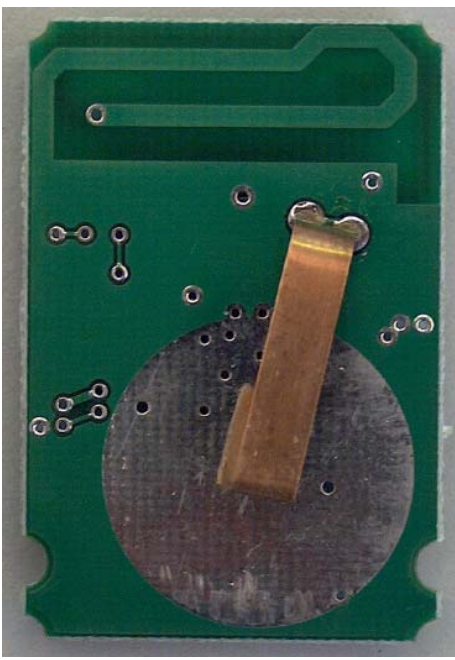
	Old version	New version
	TCF-051 Rev. 1 issued on 17/09/2001	TCF-085 Rev.0 issued on 22/04/2005

2 INTERNAL LAYOUT

3 PCB

	Old version	New version
PCB side A	 The image shows the top layer (Side A) of the old PCB. It features a complex layout of copper traces, pads, and vias. A circular pad is visible in the upper right quadrant. The label 'K275' is printed near the bottom left corner.	 The image shows the top layer (Side A) of the new PCB. It has a similar layout to the old version but with several modifications. A date stamp '04-05-08-07-08' and a version identifier '1-2-3-4-5-6' are visible on the left side. The label 'K320' is printed near the bottom left corner.
PCB side B	 The image shows the bottom layer (Side B) of the old PCB. It is mostly black with white copper traces and pads visible. The layout is the reverse of Side A.	 The image shows the bottom layer (Side B) of the new PCB. It is mostly black with white copper traces and pads visible. The layout is the reverse of Side A, showing the changes made to the bottom layer.

4 PHOTOS

	Old version	New version
PCB side A	 A photograph of the old version of the PCB side A. It features a green PCB with various electronic components including a large circular component in the center, several integrated circuits, and numerous surface-mount components. The text 'K275' is visible on the bottom left.	 A photograph of the new version of the PCB side A. It shows a similar layout but with updated components, including a different central circular component and various surface-mount components. The text 'K320' and '1-2-3-4-5-6' are visible on the bottom left.
PCB side B	 A photograph of the old version of the PCB side B. It shows a green PCB with a large circular area in the center, a metal strip with a cross symbol, and various surface-mount components. The text '1-2-3-4-5-6' and '7-8-9-10' is visible on the top left.	 A photograph of the new version of the PCB side B. It shows a similar layout but with updated components, including a different metal strip and various surface-mount components. The text '1-2-3-4-5-6' and '7-8-9-10' is visible on the top left.