

# airBridge

Wireless Ethernet Client



*Instant Wireless Access for all Ethernet Equipment*

# *air***Point**

Wireless Access Point



*Higher power, Wider coverage, Lower Cost*

## Go Wireless for less - Less Money, Less Mess, Less trouble...

Sharing Broadband Internet access across many computers within a home or office is an established need today. The rapidly decreasing cost of Wireless LANs makes it more cost effective solution as compared with implementing their messy wired counterparts in many cases.

Wireless Access points are the essential and perhaps the most important part of a wireless infrastructure and smartBridges brings to you the best in the business.

## airPoint™ - Wireless Access Point that's making Waves

airPoint™ is a high performance, long range and easy to install Wireless Access point for Home and small office infrastructure requirements. airPoint™ provides wireless freedom and flexibility to work anywhere in the office or at home.

### LongRange™ Radio Performance that goes the Distance

airPoint™ features LongRange™ wireless design that provides 100 mW radio power to deliver High data throughput and long operating range. smartBridges' superior design of the radio receiver enhances the sensitivity to incredible -95 dBm level. These superior receiver and transmitter characteristics result in the long-range wireless coverage of up to 800 meters (2640 feet) at 11 Mbps of data rate in free open space. At a lower speed of 1Mbps, the range has been tested up to 1 Mile (1600m). Better range translates directly into lower wireless infrastructure cost when the need is to cover a large area.

### Industry Standard compliant for Inter-operability

airPoint™ is based on the IEEE 802.11b industry standard prescribed for Wireless LANs. Automatic radio tuning technology is used during manufacturing to ensure that the airPoint™ can inter-operate with any standard compliant device. airPoint™ has been tested for reliable operation with the wireless equipment from various leading manufacturers.

### Multi-Featured Security

airPoint™ is equipped with a choice of security levels to protect the data. It comes with standard Wi-Fi prescribed Wired Equivalent Privacy (WEP) security using 40/64 bit Key. Additionally airPoint™ also offers enhanced 128-bit key encryption for superior data protection.

Another key security features built into airPoint™ includes MAC level security that restricts the permitted access to pre-registered wireless clients base on their MAC ID.

## simpleMonitor™ The Intuitive Network Management Tool

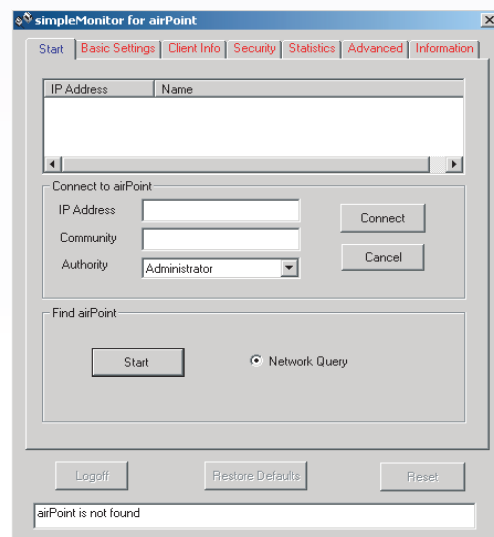
airPoint™ is supported by simpleMonitor™, an advanced Management tool, which is specifically designed to simplify wireless network management complexities. simpleMonitor™ is designed using Open System architecture. It utilizes popular network management standards (SNMP, MIB) to manage the wireless-centric network parameters such as, Channel selection, Network association, data rate, and site survey. Its graphical user interface is extremely intuitive for navigating, examining, and managing the wireless network.

### Dynamic Rate Scaling

To increase the data range and ensure wireless network connectivity, airPoint™ adopts Dynamic Rate Scaling, thus always seeking to connect at 11 Mbps then automatically scaling to 5.5 Mbps, as well as 2 Mbps and 1 Mbps. When the signal strength increases, its speed also increases until it reaches the optimal rate, ensuring the highest level of service and the best continuity for data transmission.

### Power over Ethernet option available

In many cases multiple access points are required to be installed to cover a certain area. It becomes a problem to find a power point next to many locations where access points are required to be installed for optimum Radio performance. airPoint™ can also be powered through the Ethernet cable by using the optional power injector available from smartBridges.



## Variety of Applications

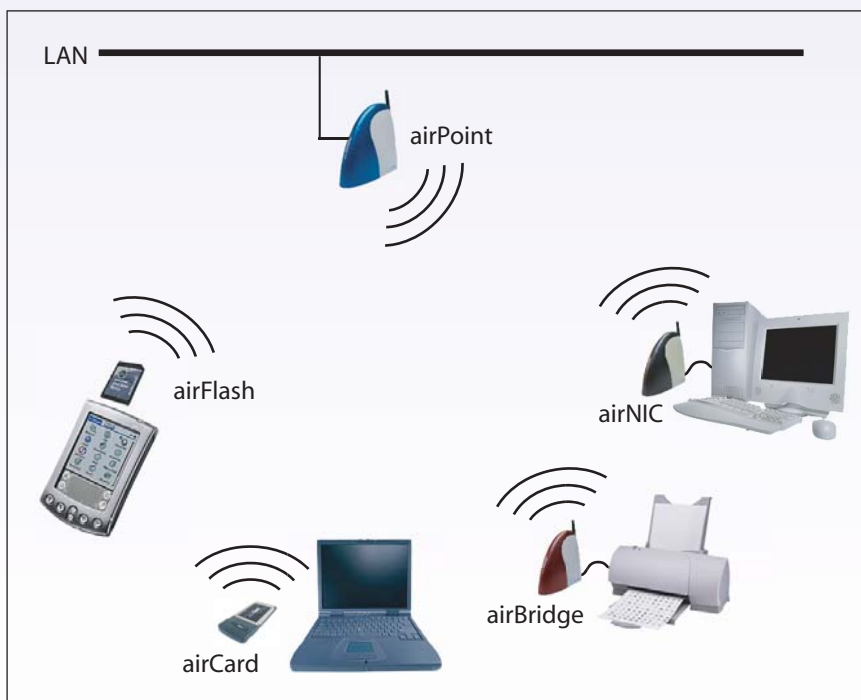
### Finally, Internet everywhere at home

There are many contentions in a family life. Internet access need not be one of them. The broadband Internet connection can now be shared instantly between the Living room PC, the PC in the study, Junior's PC or the notebook that you brought home to work. Going further, you can also share files, MP3 music or digital pictures between all these computers.

Installing an airPoint™ is a safe long term investment. You can be at peace of mind that as you add more computers, Wireless VoIP phones or a 802.11b compatible refrigerator when it becomes available, your workhorse wireless LAN is ready to receive and interoperate with them. You continue to reap benefits from airPoint's superior range and quality as you add new gizmos to your wireless world.

### SOHO that even the corporations are jealous of

MIS and ERP systems running on omni-present corporate LANs have been a major driving force behind efficiency of large corporation. Installing a similar infrastructure at your small office / home office is asking for a huge capital lay out. airPoint™ brings to you the freedom to network all your information at a very small cost. There is no need to call a house-ripper when you need to expand the network to install network cables. Everyone in the office can enjoy ubiquitous access to Internet and all the data. That's efficiency squared, a sure winner for your business.



### Features at a Glance

- Radio Power Output of 100 mW ensures extended high-speed communication indoors and outdoors.
- High receiver sensitivity of up to - 95dBm provides error-free signal reception
- Complete 14 Channels support for worldwide coverage
- High Level security with full 128 bit Key WEP encryption.
- Provides continuous connectivity at the highest rate even in high interference environments by automatically selecting the highest usable rate
- IEEE 802.11b compliant to insure interoperability
- Flash Memory storage of firmware for field upgrade
- Provides Remote monitor and management using simpleMonitor™.
- Auto Roaming in compliance with IEEE 802.11b standard
- Optional Power injector for Power over Ethernet
- Comprehensive 1 Year Warranty

### Technical Specifications

**Product No:** SB2400

**Standards:** IEEE 802.1b, IEEE 802.3

**System Interface:** Ethernet RJ45 (10/100Mbps)

**Data Rate:** 11Mbps - CCK

Auto Fall Back 5.5 Mbps - CCK

2Mbps - DQPSK

1Mbps - DBPSK

**Frequency Band:** 2400 - 2483.4 MHz

**Wireless Medium:** DSSS

**No. of Channels:** 14 Channels (Over laping)

11 to North America,

14 Japan, 13 Europe(ETSI)

**Modulation:** DQPSK / DBPSK / CCK

**Output Power:** 100mW (Max)

**Receiver Sensitivity:** - 95 dBm

**Range:** Outdoor, Noise Free open space

Line of Sight:

800 meters at 11Mbps

1600 meters at 1Mbps

**Antenna:** External with 2.2 dBi Gain

**Security:** 40/64 and 128 bit Wired Equivalent Protection

**Management** : SNMP (MIB, Traps)

: TFTP (for Firmware download)

**Roaming:** Supported as per IEEE 802.11b

**Power Source:** AC Adapter 100~230 V AC 50/60 Hz

**LED Indicators:** Power, Ethernet Link, Transmission

**Operating Temp:** 0 to +55° C (operating)

**Humidity (non -condensing):** 10 to 85 % typical

**Dimensions:** L 122mm; W 42mm; H 118mm

**Weight:** 160 g

## THE MISSING LINK

Instant access to data is an essential requirement of the modern world. Be it a sales person requiring to authorize a credit card in the foyer of the mall or be it a printer that churns out the customer's order in the kitchen to provide efficient service on the restaurant table.

The lightning fast growth of high speed Wireless LANs is driven by this need for efficiency in running a business or providing better service to supersede the competition. Like the situations above, such connectivity needs are not restricted to connect PCs to LAN and Internet but goes way beyond.

Would it not be a great day if all the expensive and useful equipment connected to the LAN could be moved where it is needed and not where the LAN port on the wall is? Well that day has just arrived. airBridge™ from smartBridges can make any equipment connected to Ethernet go wireless.

## airBridge™ - ETHERNET PORT WHERE YOU NEED IT

airBridge™ is a Wireless Ethernet client. It provides wireless LAN connectivity to all devices that connect to an Ethernet port. Based on the IEEE 802.11b industry standard wireless technology and operating in the unlicensed 2.4 GHz band, airBridge™ provides high speed data rate of 11 Mbps.

### LongRange™ Radio Performance that goes the Distance

airBridge™ features LongRange™ wireless design that provides 100 mW radio power to deliver High data throughput and long operating range. smartBridges' superior design of the radio receiver enhances the sensitivity to incredible -95 dBm level. These superior receiver and transmitter characteristics result in the long-range wireless coverage of up to 800 meters (1/2 mile) at 11 Mbps of data rate in free open space. At a lower speed of 1Mbps, the range has been tested up to 1600 meter (1 Mile). Better range translates directly into lower wireless infrastructure cost when the need is to cover a large area.

### Instant and elegant Connectivity for Ethernet Equipment

airBridge™ allows instant connectivity right out of the box. Once setup to work with a particular wireless network, any Ethernet-ready device including printers, copiers, PCs, point-of-sale devices, terminals, etc. can be just plugged in to the airBridge™ to connect them to the wireless network. The devices thus can be placed at their Point of work with the complete connectivity maintained. There are no delays, no hefty expenses of tearing up the walls and all the unsightly wiring up.

### No Drivers Needed

airBridge™ has embedded software that performs complete data translation between the Client device and the wireless network. No special Device drivers are required to be loaded on the Client device. This makes the airBridge™ independent of the Client operating system eliminating much trouble of finding and configuring appropriate device drivers like those needed for other types of wireless clients.

### Industry Standard compliant for Inter-operability

airBridge™ is based on the IEEE 802.11b industry standard for Wireless LANs. Automatic radio tuning technology is used during manufacturing to ensure that the airBridge™ can inter-operate with any standard compliant device. airBridge™ has been tested for reliable operation with the wireless equipment from all leading manufacturers.

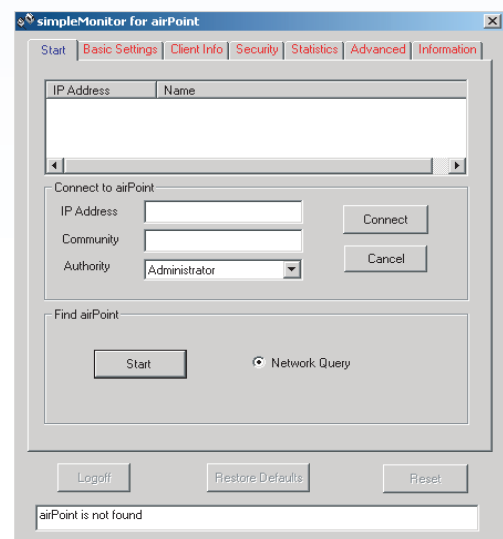
### Enhanced Security to prevent eavesdropping

airBridge™ is equipped with a choice of security levels to protect the data. It comes with standard Wi-Fi prescribed Wired Equivalent Privacy (WEP) security using 40 bit Key. Additionally airBridge™ also offers enhanced 64 -bit or 128-bit key encryptions for superior data protection.

### simpleMonitor™

#### The Intuitive Network Management Tool

airBridge™ is supported by simpleMonitor™, an advanced Management tool, designed specifically to simplify wireless network management complexities. simpleMonitor™ is designed using Open Systems architecture. It utilizes popular network management standards (SNMP, MIB) to manage the wireless-centric network parameters such as, Channel selection, Network association, data rate, and site survey. Its graphical user interface is extremely intuitive for navigating, examining, and managing the wireless network.



## Variety of Applications

Any Ethernet-ready device, including printers, copiers, PCs, point of-sale devices, monitoring equipment, etc., can be connected directly to the airBridge™ without the expense or delay of cabling.

### Cost effective replacement for the Ethernet Cable

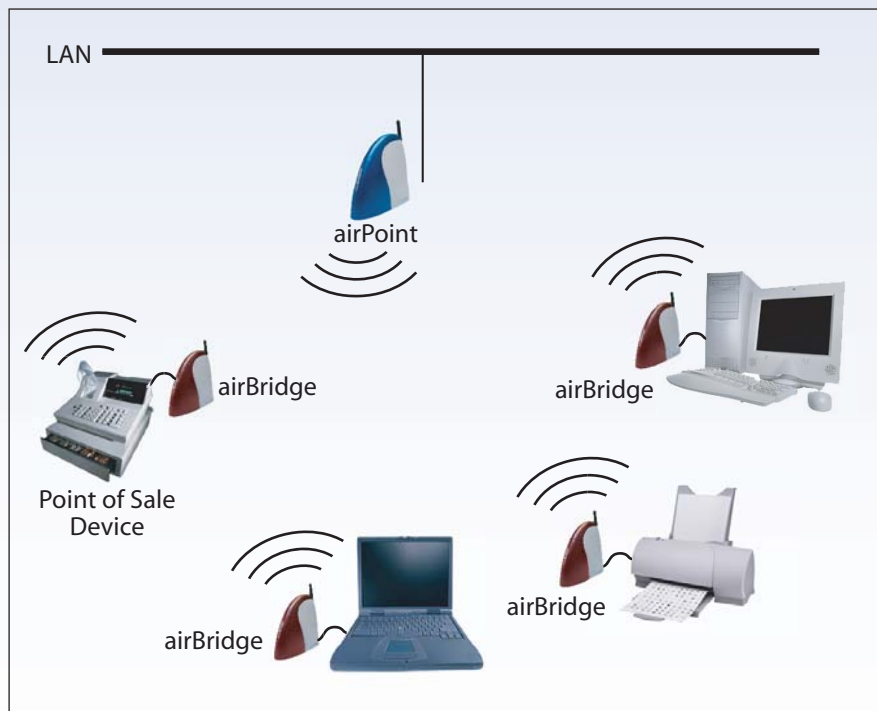
Class rooms in Schools, Selling Points in the store, Printers in Restaurant Kitchen. The applications for airBridge™ are limited only by the imagination. In a nutshell, where ever you need to connect an Ethernet equipment but the cabling and concealing costs and delays look prohibitive, think airBridge™.

### Ideal Wireless Client for Hotels, Lounges, Airports and HotSpots

As airBridge™ requires no driver installation, it becomes an ideal wireless access device for the guests who would like to access the wireless LAN. Over 27 Million Ethernet Port ready notebooks have been bought by business travelers in recent years and airBridge™ can help them go wireless instantly without creating a software residuum as in the case of USB and PCMCIA adapters.

### On the spot temporary LAN where you need it

Construction or other site offices, interim need for Classroom Net access or similar other need for a temporary LAN / shared Internet access is cost effectively met by deploying airBridge™ based solutions. Installation of such wireless LANs is straightforward and the whole setup can be re-used at another location with minimum effort.



### Features at a Glance

- Driver-less Installation.
- Works with all the Operating Systems including any Ethernet ready printers, Copiers or Point of Sale devices
- 100 mW RF output power for Long range coverage of up to 800 meters (1/2 mile) at 11Mbps and 1600 meters (1 mile) at 1Mbps
- High Receiver sensitivity of up to -95 dBm; provides error free data transfer
- High speed data rate up to 11Mbps
- High Level security with full 128 bit Key WEP encryption
- Auto Fall back data rate for Long distance communication and Noisy environments
- Compatible with IEEE 802.11b & IEEE 802.3 standard
- Embedded with SNMP MIBS for remote monitoring features
- Firmware is upgradeable to protect your investment
- Comprehensive 1 Year Warranty

### Technical Specifications

**Product No:** SB2200

**Standards:** IEEE 802.1b, IEEE 802.3,

**System Interface:** Ethernet RJ45 (10/100Mbps)

**Data Rate:** 11Mbps - CCK

Auto Fall Back 5.5 Mbps - CCK

2Mbps - DQPSK

1Mbps - DBPSK

**Frequency Band:** 2400 - 2483.4 MHz

**Wireless Medium:** DSSS

**No. of Channels:** 14 Channels (Over laping)

11 to North America,

14 Japan, 13 Europe(ETSI)

**Modulation:** DQPSK / DBPSK / CCK

**Output Power:** 100mW (Max)

**Receiver Sensitivity:** - 95 dBm

**Range:** Outdoor open space 800 meters (1/2 mile) at 11 Mbps

1600 meters (1 mile) at 1Mbps

Semi Open Office 70 meters at 11 Mbps  
120 meters at 1 Mbps

Closed Office 40 meters at 11 Mbps  
80 meters at 1 Mbps

**Antenna:** External with 2.2 dBi Gain

**Security:** 64 and 128 bit Wired Equivalent Protection

**Management** : SNMP (MIB, Tarps)

: TFTP (for Firmware down load)

**Power Source:** AC Adapter 100~230 V AC 50/60 Hz

**LED Indicators:** Power, Ethernet Link , Transmission

**Operating Temp:** 0 to +55° C (operating)

**Humidity (non -condensing):** 10 to 85 % typical

**Dimensions:** L 122mm; W 42mm; H 118mm