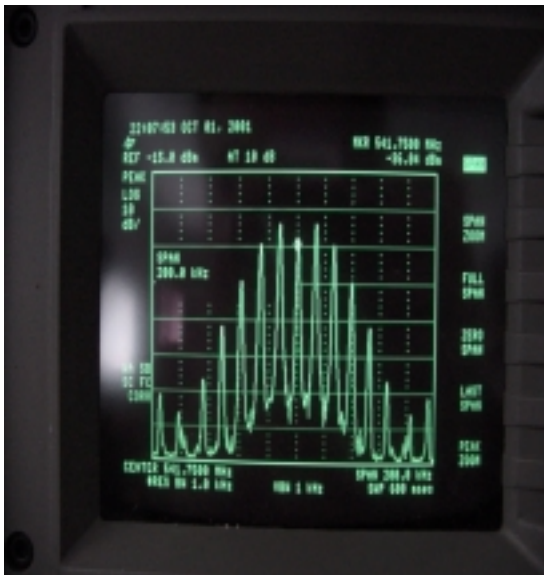
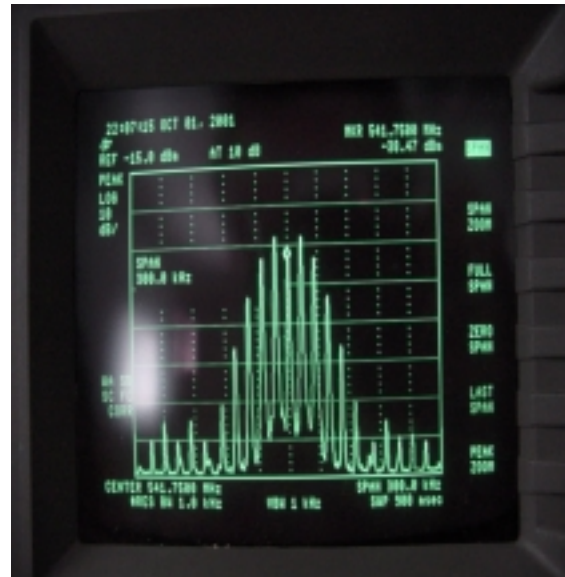


Occupied Bandwidth

The equipment was configured as in Figure 1 (Test Report #1). The aural signal was increased in power level to the appropriate 10 dB ratio. An audio signal generator was connected to the modulator audio input and the frequency was adjusted to 10.396 kHz and the audio level was increased to obtain a Bessel null at the carrier frequency to ensure deviation was correctly adjusted. The modulating frequency was changed to 15 kHz and the modulation was reduced to 85% and the spectrums were recorded at the output of the translator.



Output at 110 watts



Output at 30 watts

All spectral components outside the 200kHz BW constitute less than .5% of the total power and thus comply with FCC regulations