

FCC/IC identifier marking for WLAN unit cB-0941-02

The FCC/IC identifier marking is situated on the Primary side of the module and is printed in the solder mask.

Figure 1 and Figure 2 shows how the FCC/IC identifier is implemented on cB-0941-02 version cB-OWS451.

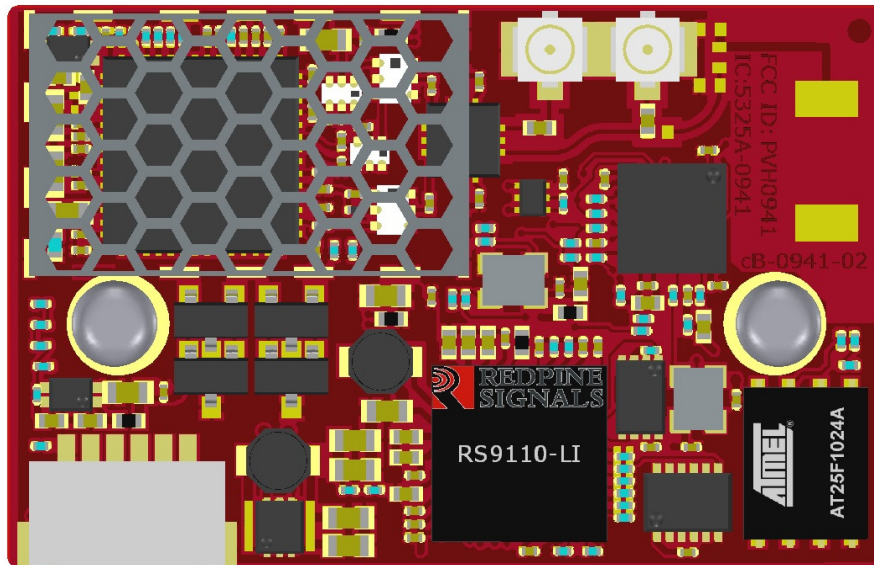


Figure 1 OWS451x FCC/IC identifier printed in the primary side solder mask

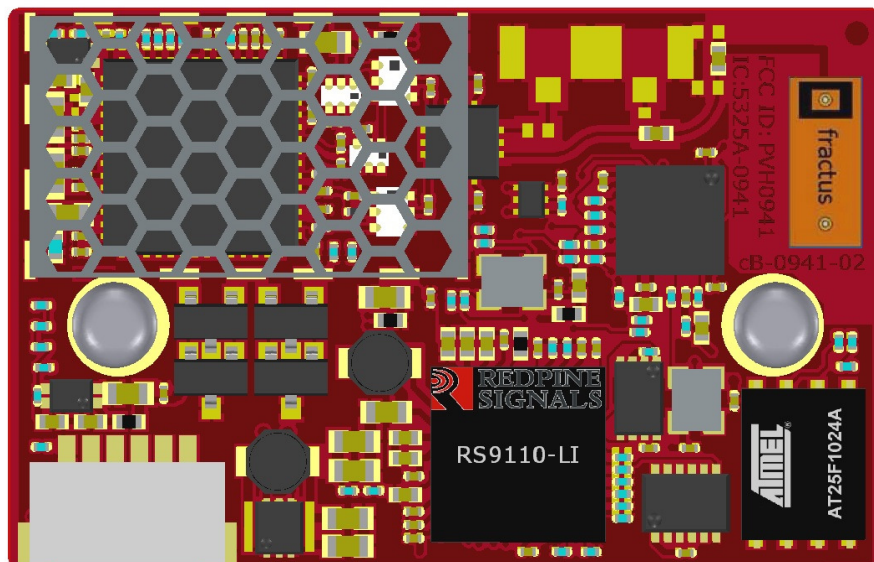


Figure 2 OWS451i FCC/IC identifier printed in the primary side solder mask

Figure 3 and Figure 4 shows how the FCC/IC identifier is implemented on cB-0941-02 version cB-OWL253.

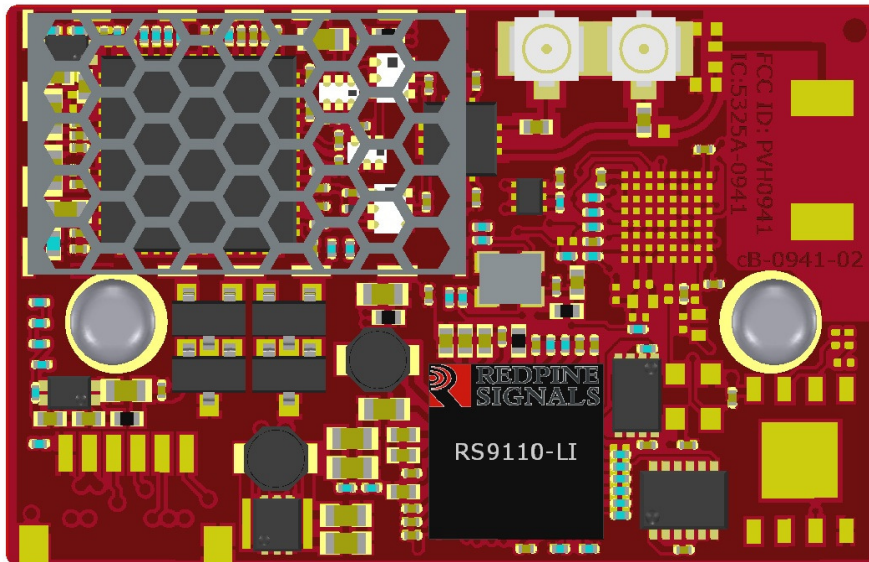


Figure 3 OWL253x FCC/IC identifier printed in the primary side solder mask

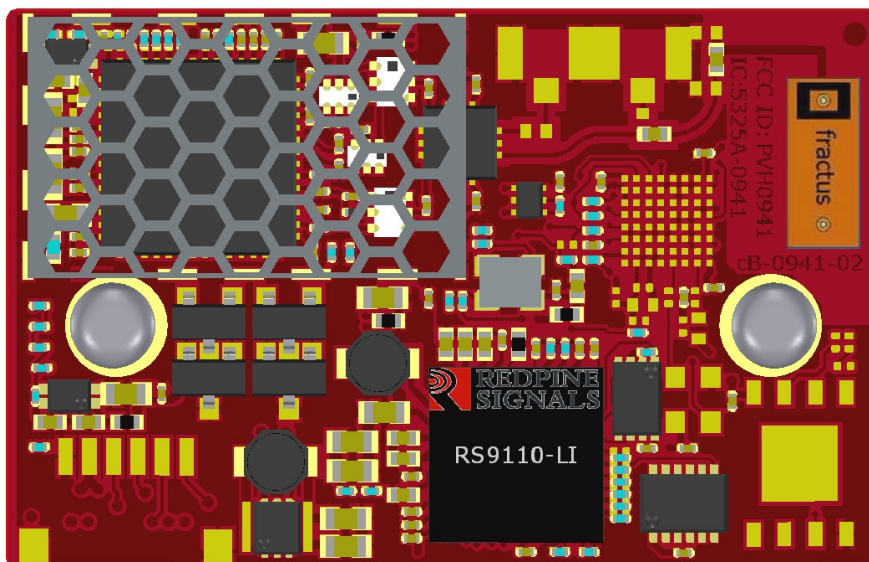


Figure 4 OWL253i FCC/IC identifier printed in the primary side solder mask

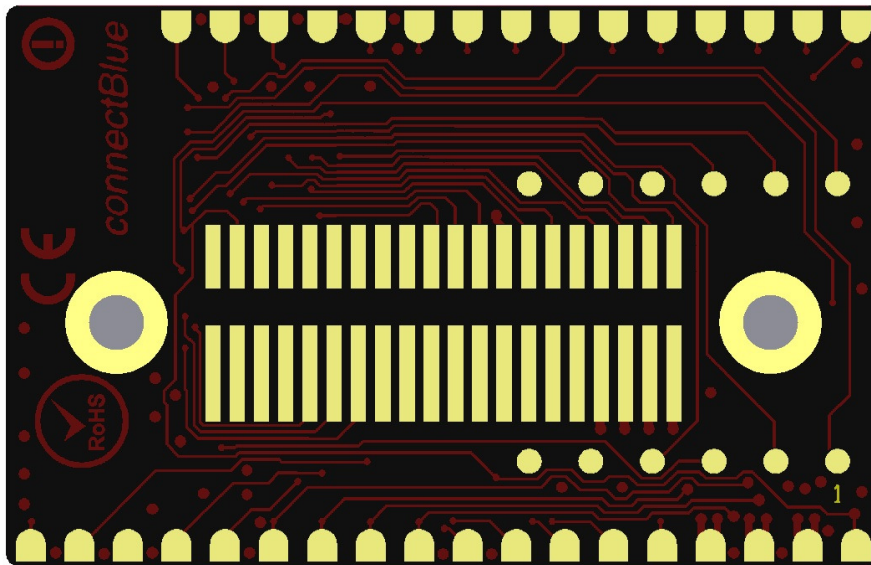


Figure 5 connectBlue is printed in the secondary side solder mask

An auxiliary label will be provided for systems using the module where the original marking will not be visible when the module is installed.

Instructions on how to attach the auxiliary label in compliance with the modular approval guidelines developed by the FCC will be provided.

The instructions will call attention to place the auxiliary label on an exterior surface of the device such that it will be visible upon inspection.

The auxiliary label will have at least the information shown in the figure below

This device contains FCC ID:PVH0941 IC:5325A-0941
