

FCC/IC identifier labels for Bluetooth module cB-OHCI406i

The FCC/IC identifier marking is situated on the Primary side of the module. The marking is printed in the solder mask.

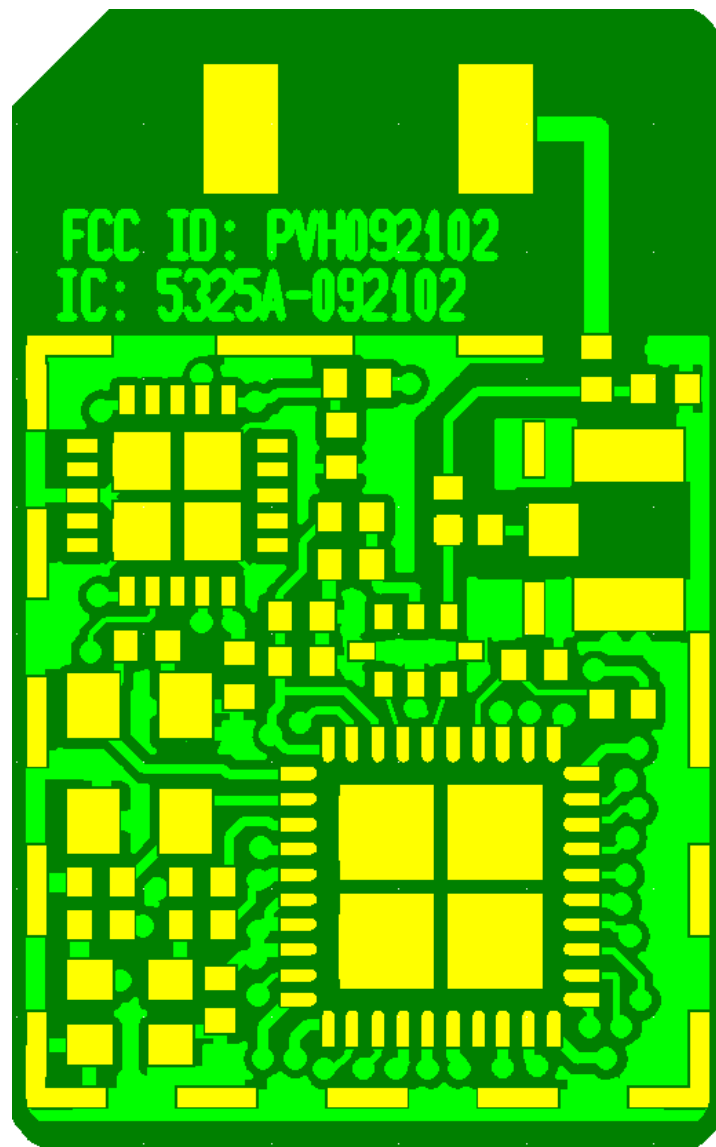


Figure 1 OHCI406i regulatory information

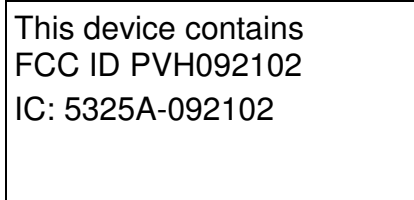
2008-10-17

An auxiliary label will be provided for systems using the module where the original label not will be visible when the module is installed.

Instructions on how to attach the auxiliary label in compliance with the modular approval guidelines developed by the FCC will be provided.

The instructions will call attention to place the auxiliary label on an exterior surface of the device such that it will be visible upon inspection.

The auxiliary label will have at least the information as shown in the figure below



This device contains
FCC ID PVH092102
IC: 5325A-092102