

FCC/IC identifier labels for WLAN unit cB-OWLAN211g

The FCC/IC identifier marking is situated on the secondary side of the module. The marking is printed in the solder mask.

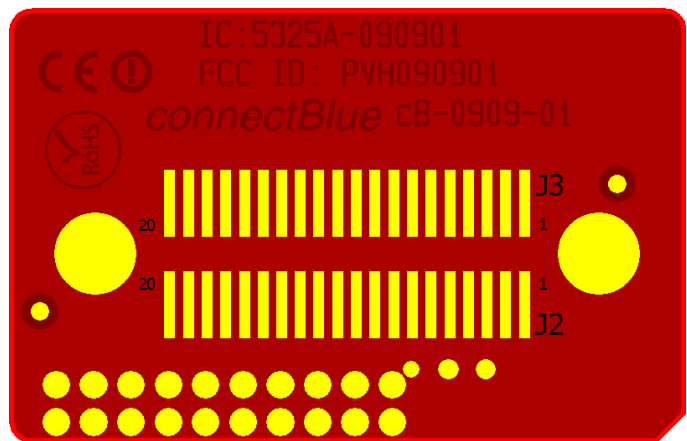


Figure 1 OWLAN211g regulatory information

Depending of module version one of the labels below will be attached to the topside of the module. There are four module versions.

Serial label

S/N:0104-01-#####
Batch: ##
FW: ## Date: YY.WW
cB-OWLAN211gi-02

Internal antenna

S/N:0106-01-#####
Batch: ##
FW: ## Date: YY.WW
cB-OWLAN211gx-02

External antenna

S/N:0105-01-#####
Batch: ##
FW: ## Date: YY.WW
cB-OWLAN211gi-04

S/N:0107-01-#####
Batch: ##
FW: ## Date: YY.WW
cB-OWLAN211gx-04

The label will be located as shown in Figure 2 – Figure 5 below.

2007-06-01

OWLAN211gi-02, internal antenna, J1 pin header connector mounted

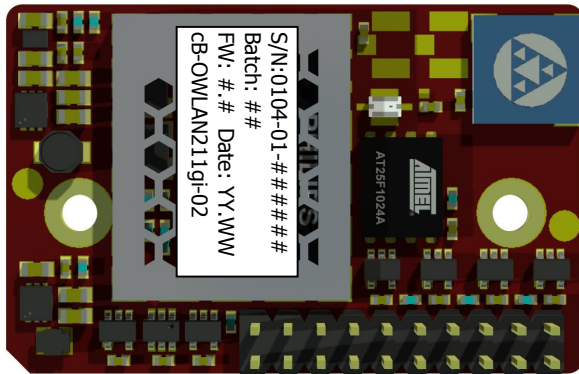


Figure 2 OWLAN211gi-02 Serial label

OWLAN211gi-04, internal antenna, J1 pin header connector not mounted

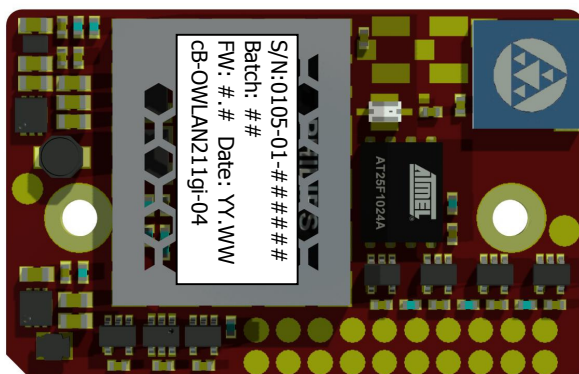


Figure 3 OWLAN211gi-04 Serial label

2007-06-01

OWLAN211gx-02, external antenna, J1 pin header connector mounted

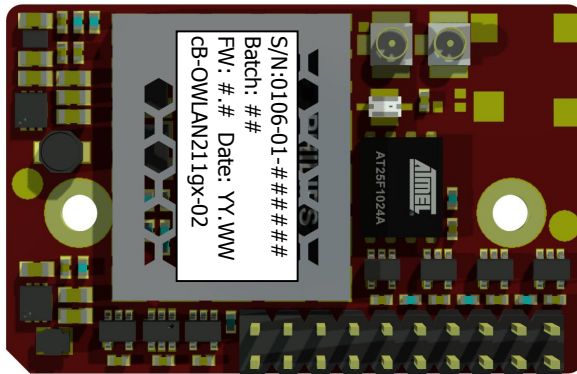


Figure 4 OWLAN211gx-02 Serial label

OWLAN211gx-04, external antenna, J1 pin header connector not mounted

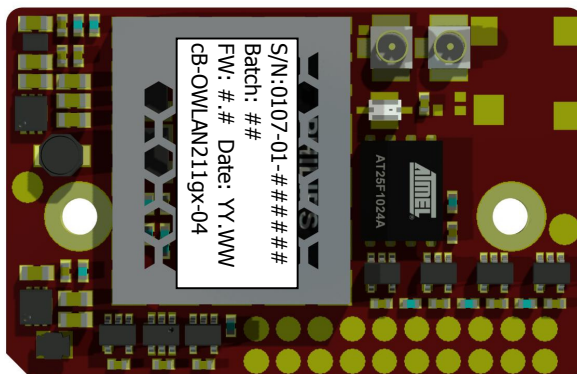


Figure 5 OWLAN211gx-04 Serial label

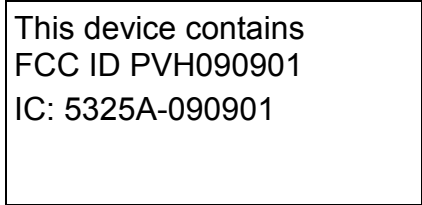
2007-06-01

An auxiliary label will be provided for systems using the module where the original label not will be visible when the module is installed.

Instructions on how to attach the auxiliary label in compliance with the modular approval guidelines developed by the FCC will be provided.

The instructions will call attention to place the auxiliary label on an exterior surface of the device such that it will be visible upon inspection.

The auxiliary label will have at least the information as shown in the figure below



This device contains
FCC ID PVH090901
IC: 5325A-090901