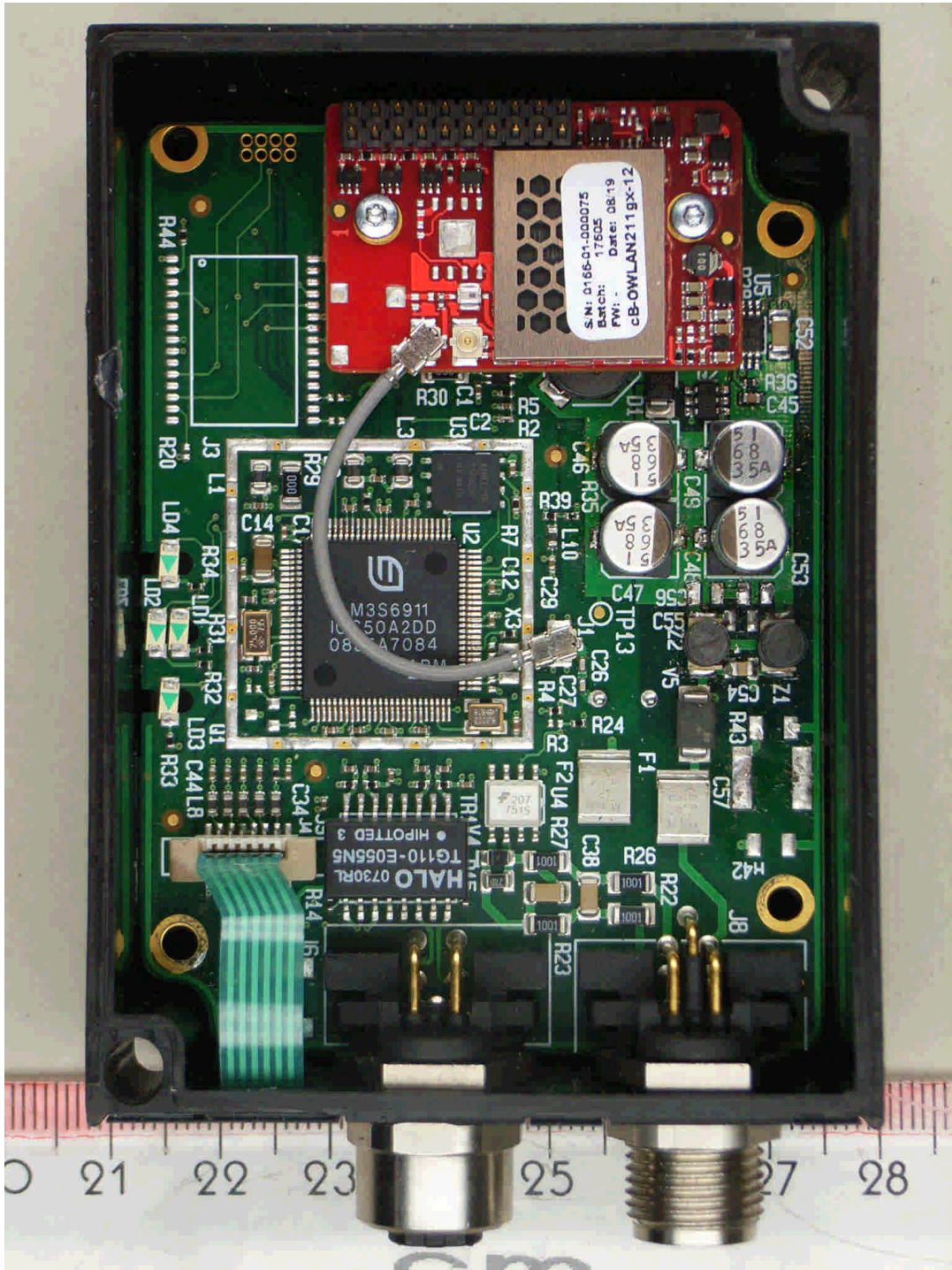


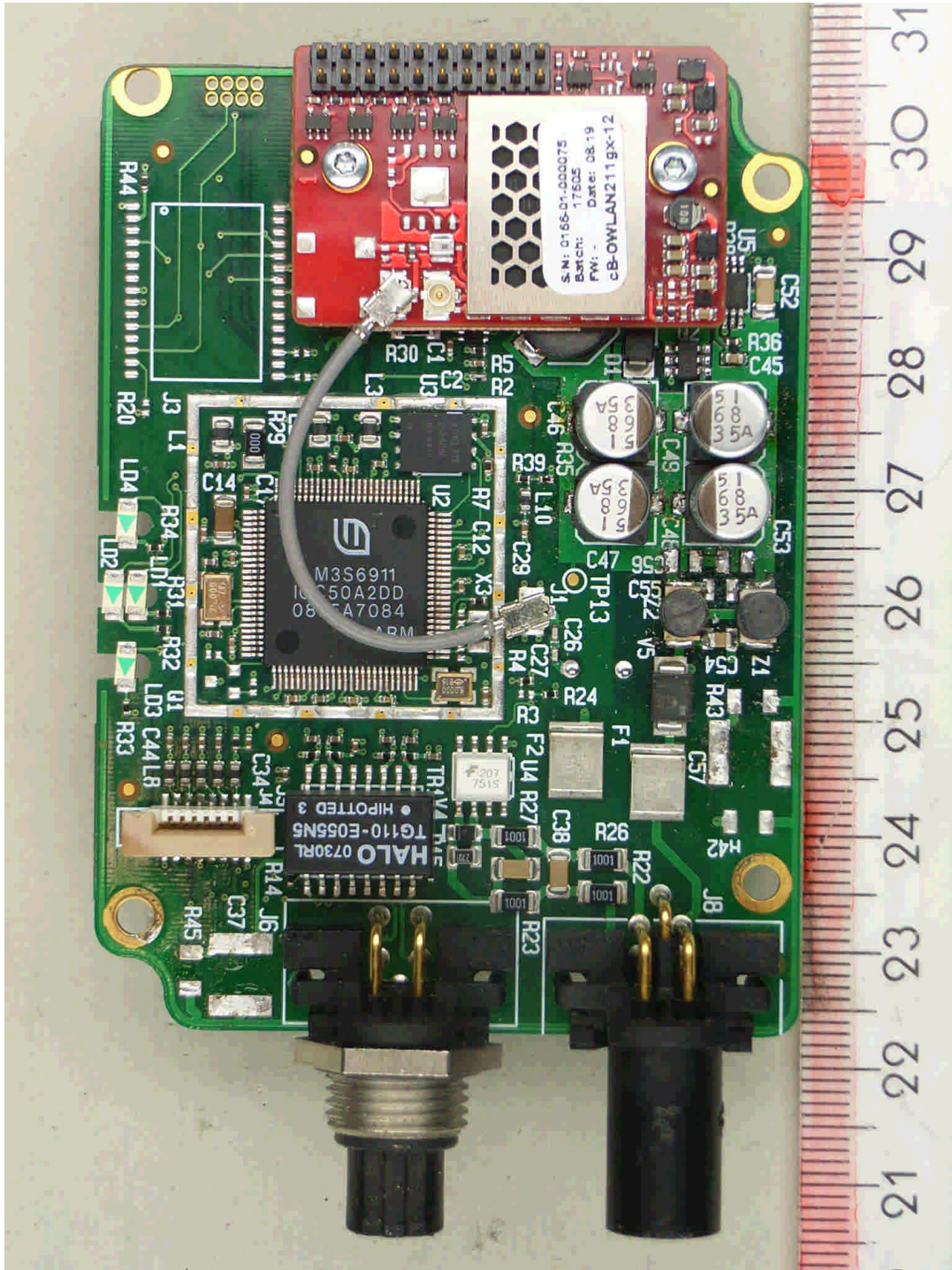
Annex C of test report F082567E01
EUT: cB-OWLAN211gx-12 inside RWEPA
Manufacturer: connectBlue AB



82567_c.jpg

RWEPA, internal view

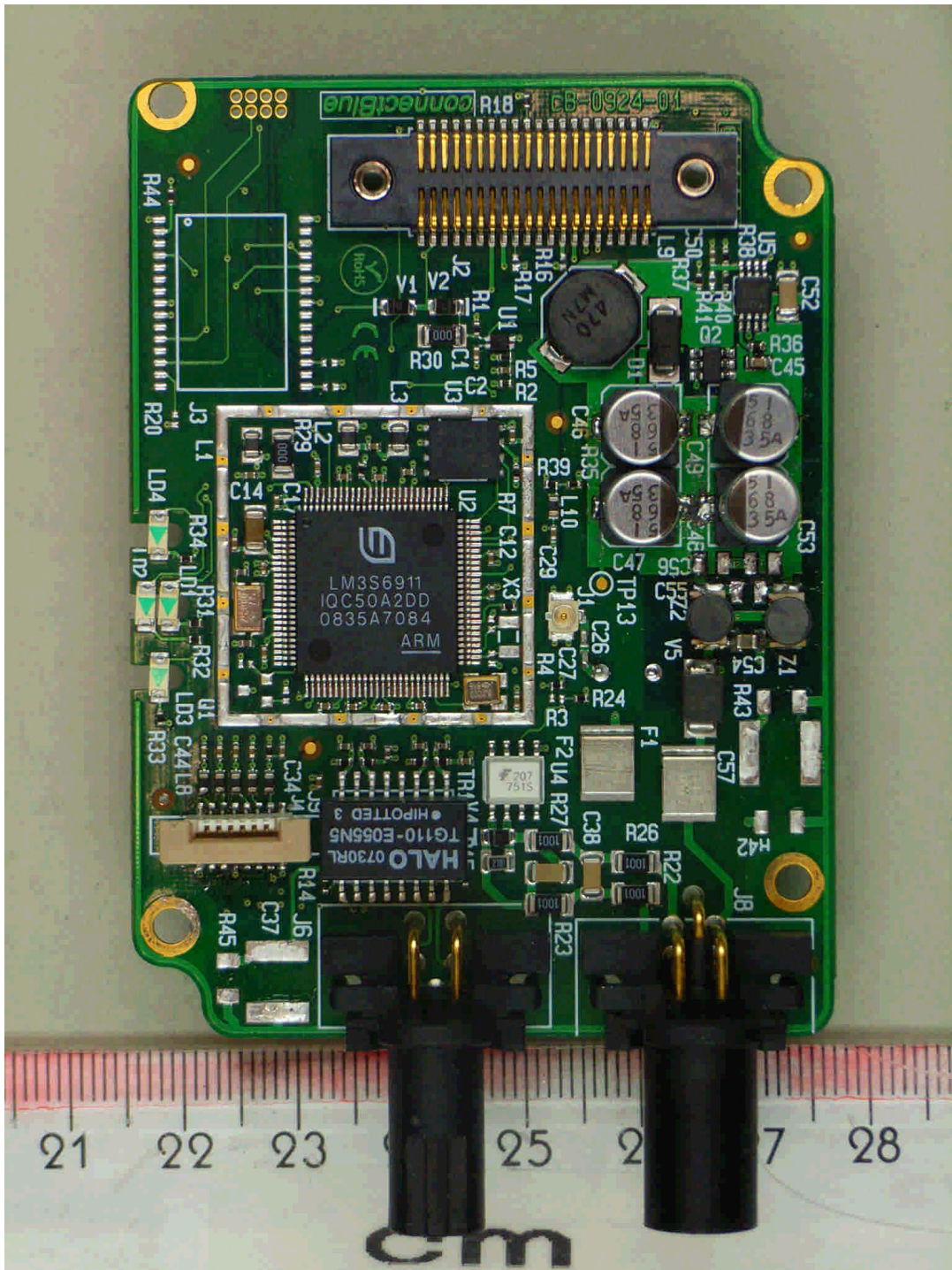
Annex C of test report F082567E01
EUT: cB-OWLAN211gx-12 inside RWEPA
Manufacturer: connectBlue AB



82567_f.jpg

RWEPA, main PCB, top view

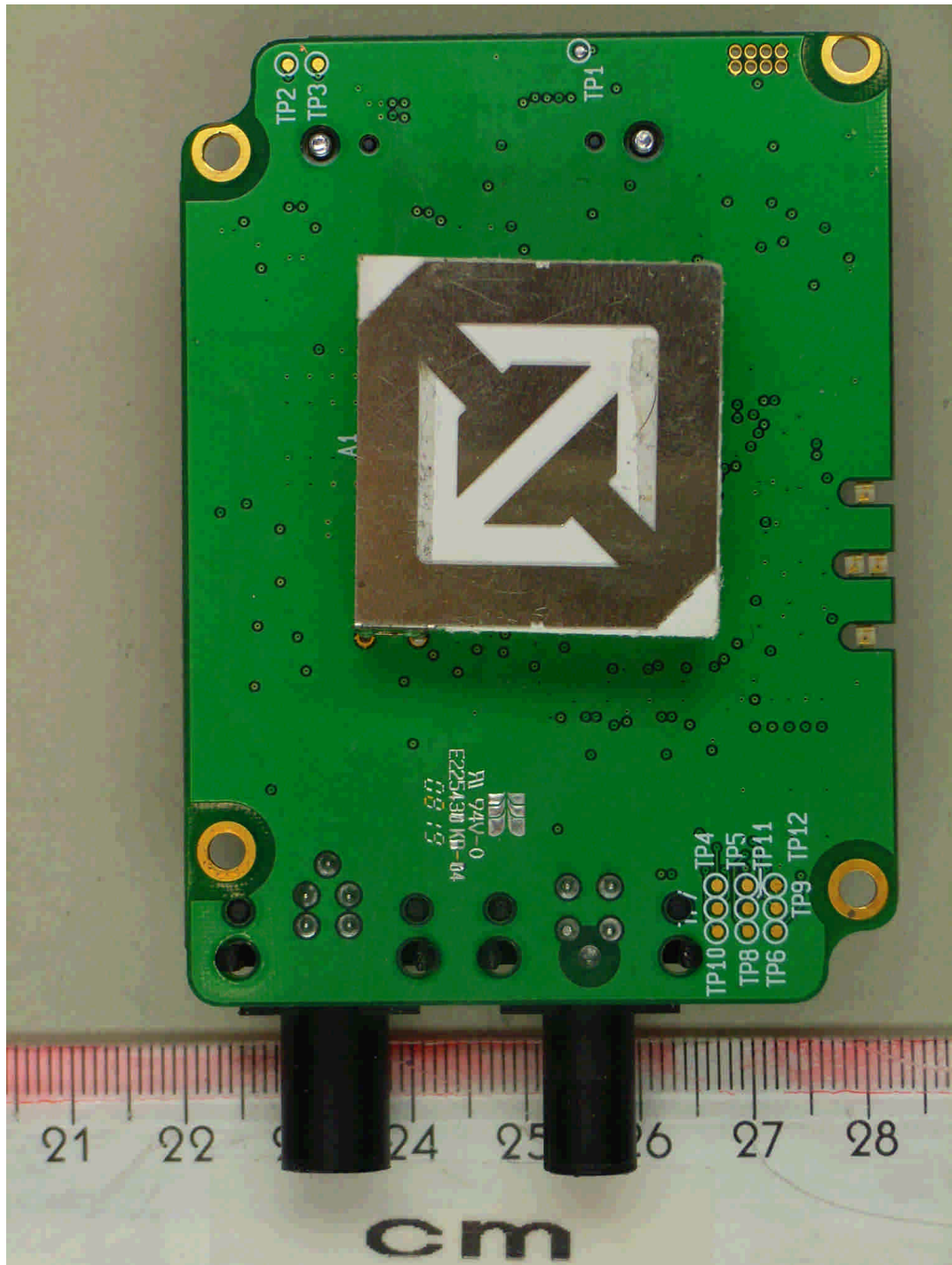
Annex C of test report F082567E01
EUT: cB-OWLAN211gx-12 inside RWEPA
Manufacturer: connectBlue AB



82567_g.jpg

RWEPA, main PCB, top view, WLAN module removed

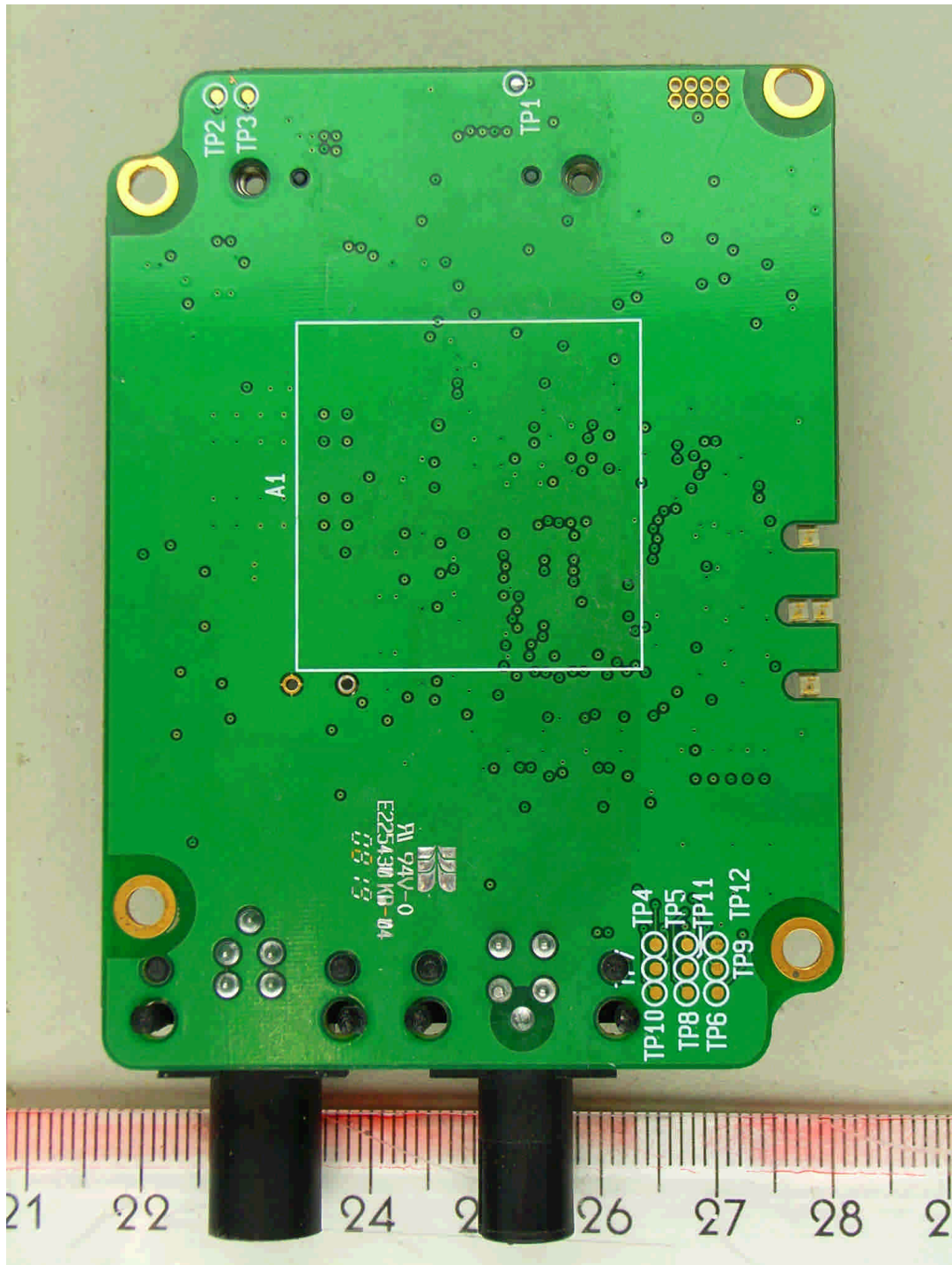
Annex C of test report F082567E01
EUT: cB-OWLAN211gx-12 inside RWEPA
Manufacturer: connectBlue AB



82567_h.jpg

RWEPA, main PCB, bottom view

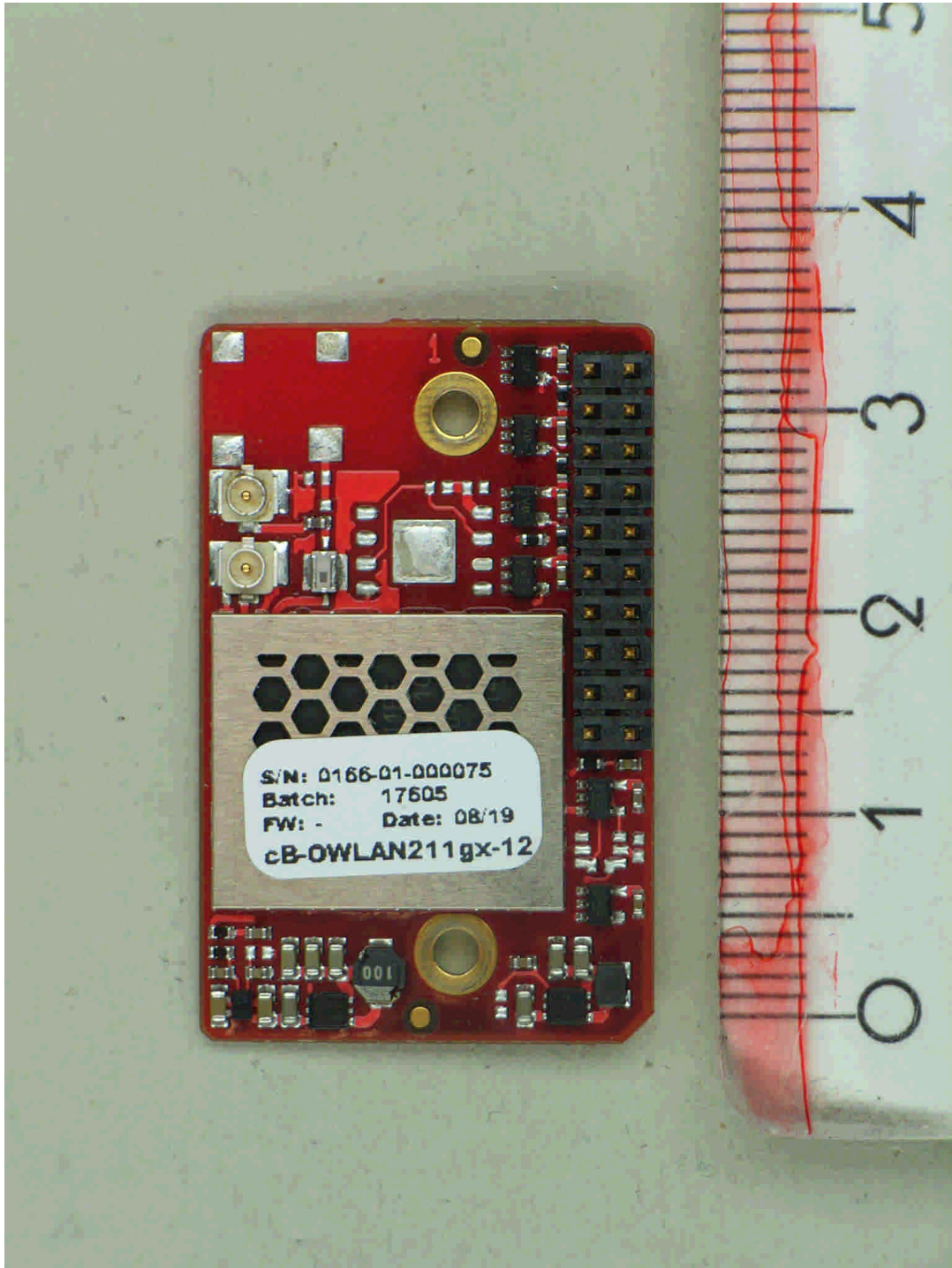
Annex C of test report F082567E01
EUT: cB-OWLAN211gx-12 inside RWEPA
Manufacturer: connectBlue AB



82567_i.jpg

RWEPA, main PCB, bottom view, antenna desoldered

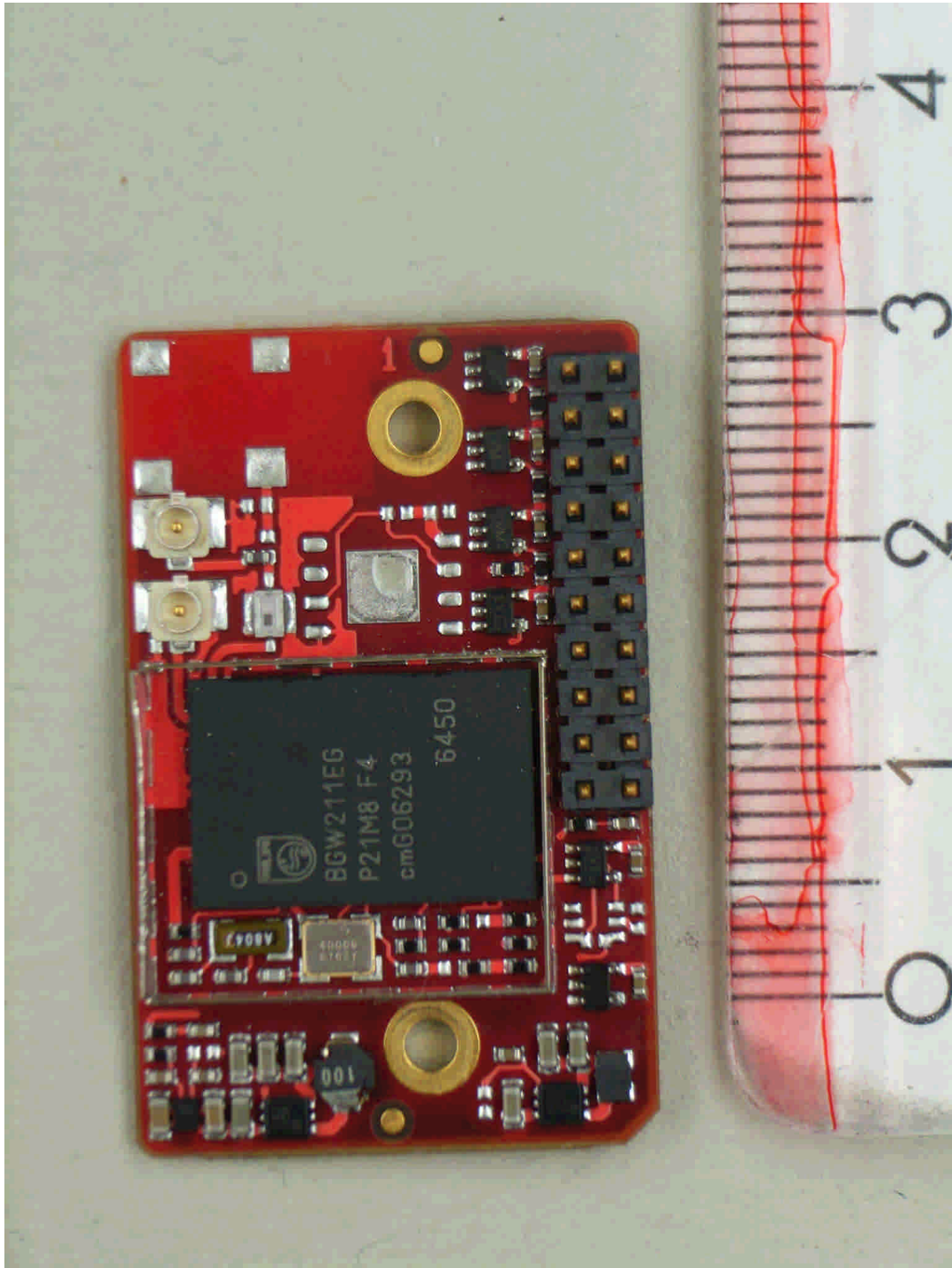
Annex C of test report F082567E01
EUT: cB-OWLAN211gx-12 inside RWEPA
Manufacturer: connectBlue AB



82567_e.jpg

cB-OWLAN211gx-12, top view

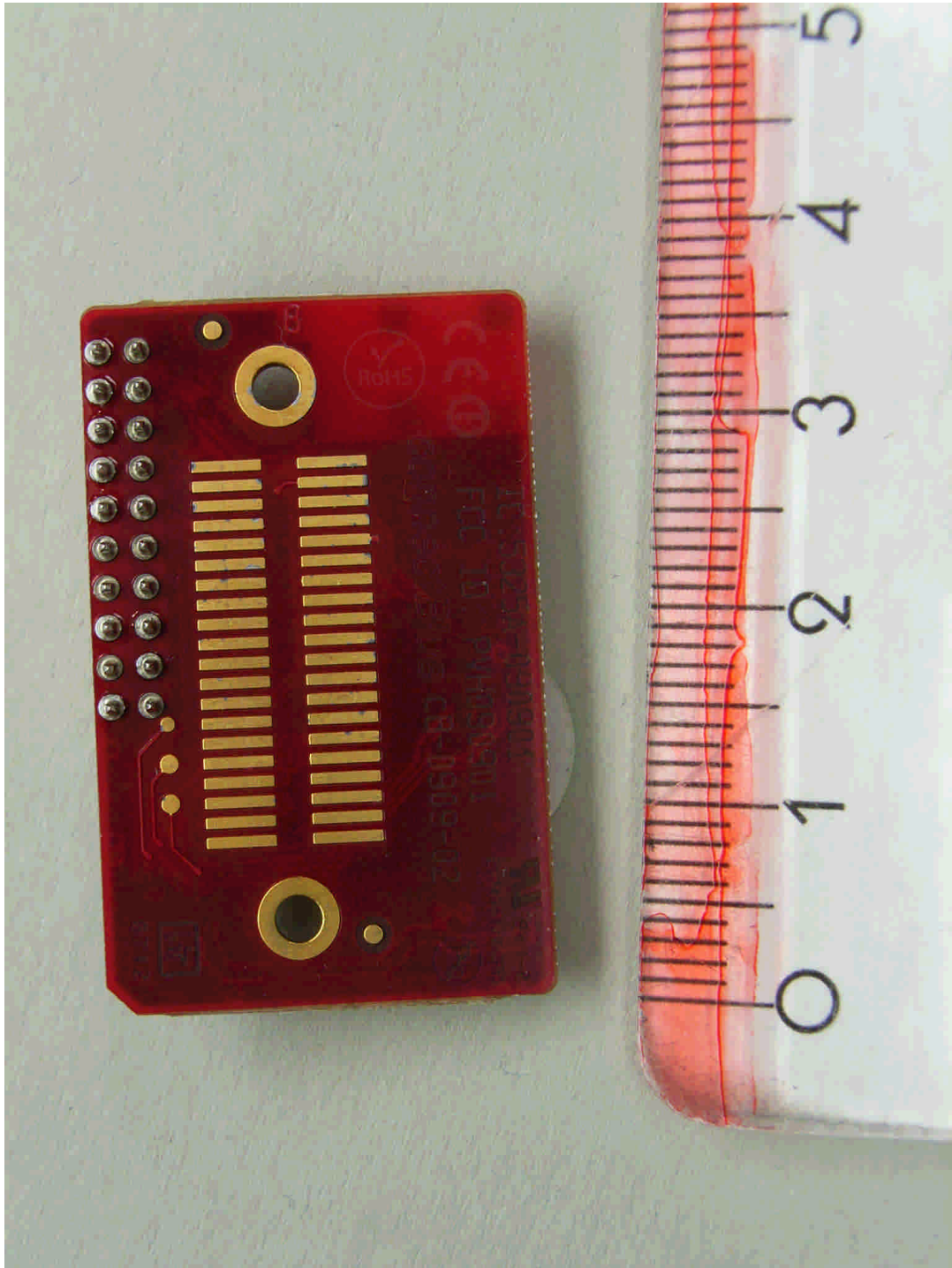
Annex C of test report F082567E01
EUT: cB-OWLAN211gx-12 inside RWEPA
Manufacturer: connectBlue AB



82567_k.jpg

cB-OWLAN211gx-12, top view, shielding removed

Annex C of test report F082567E01
EUT: cB-OWLAN211gx-12 inside RWEPA
Manufacturer: connectBlue AB



82567_j.jpg

cB-OWLAN211gx-12, bottom view