

The internal / external antenna(s) used for this module must provide a separation distance of at least 20 cm from all persons and must not be co-located or operating in conjunction with any other antenna or transmitter.

NOTE: The outside of final product that contain a WiBear11n module must display in a user accessible area a label referring to the enclosed module. This exterior label can use wording such as the following: “Contains Transmitter Module IC ID: 7738A-WB11NSF1”² or “Contains IC ID: 7738A-WB11NSF1”.

IMPORTANT: The approval type for the WiBear11n variants is a *limited* modular approval due to the absence of a shielding. Due to Industry Canada Modular Approval Requirements (Source: RSS-Gen / Issue 3 / Dec. 2010) any application which includes the WiBear11n module must be approved by the module manufacturer (lesswire AG). The application manufacturer must provide design data for the review procedure.

Approved Antennas List

For Bluetooth and WLAN operation in the 2.4 GHz band, the module has been tested and approved for use with the antenna listed in the table below.

Table 17: Approved antennas list, single-band operation

Model Name	Manufacturer and description	Gain [dBi]
2450AT45A100	Johanson Technology, Chip antenna, 2400 – 2500 MHz	3.0 (peak)

For Bluetooth, WLAN operation in the 2.4 GHz band, and WLAN operation in the 5 GHz band, the module has been tested and approved for use with the antenna listed in the table below.

Table 18: Approved antennas list, dual-band operation

Model Name	Manufacturer and description	Gain [dBi]
A10194	Antenova, dual-band SMD antenna, 2.4 – 2.5 GHz and 4.9 – 5.9 GHz	1.8 (peak)

The module may be integrated with other antennas which the OEM installer must authorize with respective regulatory agencies and after approval of the module manufacturer.

FCC and IC IDs

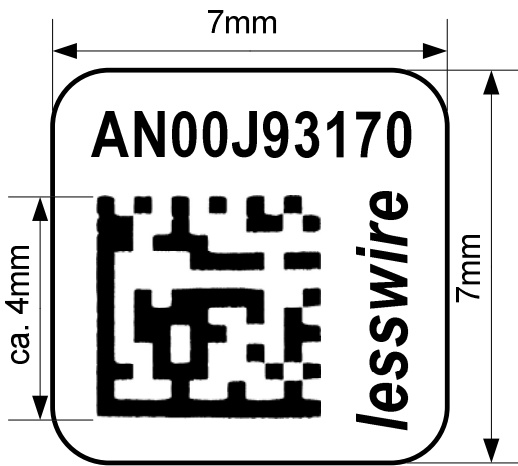
Table 19: FCC and IC IDs for WiBear11n module variants

Model	Model number	FCC ID	IC ID
WiBear11n-SF1	AN00J93170	PV7-WIBEAR11N-SF1	7738A-WB11NSF1
WiBear11n-SF2	AN00J93174	PV7-WIBEAR11N-SF2	7738A-WB11NSF2
WiBear11n-DF1	AN00J93172	PV7-WIBEAR11N-DF1	7738A-WB11NDF1
WiBear11n-DF2	AN00J93176	PV7-WIBEAR11N-DF2	7738A-WB11NDF2

Label

Due to the small module size, the FCC and IC IDs cannot be displayed on the label. The corresponding FCC and IC IDs for the module variants are shown in the table above.

Label drawing:



Label location:



Figure 15: Label and label location