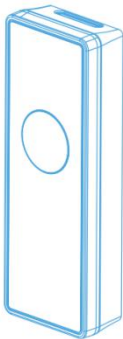




THIRD REALITY



# RealitySwitch Plus

**Life can be smarter than you think!**

©2018 Third Reality Inc. All rights reserved.



Switch body



Rocker backplane



Toggle backplane

## Accessories

---



Battery \*2



Screw \*2



Spacer \*2



Gasket \*4



User Manual \*1

## Features

---

1. Voice control via Amazon Echo series
2. Direct connectivity with Echo Plus
3. Compatibility with toggle and rocker panels
4. Compatibility with multiple devices on a single panel
5. ZigBee connectivity
6. Low power consumption
7. Wireless protocol: ZigBee
8. Operating frequency: 2405-2480MHz

## Instructions

---

*Welcome to your ThirdReality smart home!*

RealitySwitch Plus can be used with one of the following configurations:

- A. A *RealityAdapter*.
- B. An *Amazon Echo Plus*.
- C. An *Amazon Echo series* or *Google Home* with a 3<sup>rd</sup> compatible Wi-Fi to ZigBee *Hub*.

### 1. Configuration

---

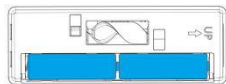
*A. You can talk with any echo devices and control the switch through a RealityAdapter.*



- 1) Download the ThirdReality App on your smartphone or tablet, register or log into the App.



- 2) Place two AA batteries inside your RealitySwitch Plus. You will see a fast blinking blue LED, indicating that your switch is in pairing mode.



- 3) To add your device (RealitySwitch Plus), please tap “+ New device” and follow the instructions in the app. **You will need to have a RealityAdapter pairs with App before this step.**



- If the pairing is successful, the blue LED will be off.
  - If the pairing fails, put your device closer to RealityAdapter and factory reset the switch, then try again.(The recommended distance:1m~3m)
- 4) At this point, you will see the device in the app. Click the device icon and verify that your device responds.

*B. If you have the **Echo Plus**, you can connect it directly with the RealitySwitch using the steps below.*

Install the Amazon Alexa app on your smart phone or tablet. Register and log in to the app, and follow the tips shown to set up your Echo Plus.



*Note: Please move your RealitySwitch Plus close to the Echo Plus.*

*C. If you have a 3<sup>rd</sup> compatible Wi-Fi to ZigBee Hub(e.g.:Wink) , you can connect it.*

Please make sure your switch is in pairing mode and refer to the user guide of the corresponding Hub.



*Note:* If none operation after installing the batteries for 3 minutes, the Switch Plus will become a normal switch with button function.

To solve it, you can re-pair the RealitySwitch Plus via factory reset or just remove the batteries over 10 minutes, and then install the batteries again.

## 2. Installation

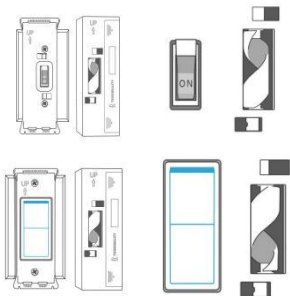
---

Two optional backplanes are provided in the product package. Choose one based on your existing toggle or rocker panels.

- 1) Tighten the backplane with the screws included in the package, paying attention to “up” direction.

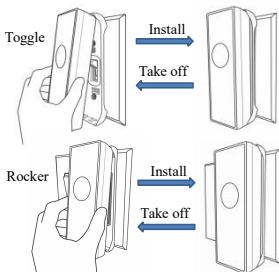


- 2) Check and adjust the switch status with your switch panel to avoid part overlaps.

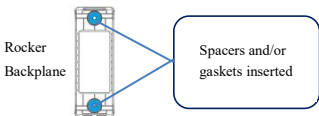


*Please remove the protection films on the surface of the switch body.*

- 3) Place the switch body onto your backplane, making sure to match the “up” direction (you can remove it first from the down direction).



- 4) In some special cases, it is necessary to insert spacers and/or gaskets in the backplane. You may adjust the screws in the backplane to ensure proper contact.



**Note:** *The spacers are only used by the Rocker Backplane.*

## Status Indication

---

- **Pairing** - LED fast blinking (two blinks every second)
- **Reconnect** - LED slow blinking (blink once every three seconds)
- **Low Battery** - LED double blinking (two short blinks every two seconds)

## Attention

---

- Do NOT press the product button during battery installation to avoid setting an unintended mode
- Keep spacers away from children
- Do NOT put your finger into the switch's "helical rotating lever"

## Troubleshooting

---

### 1. Inverted On/Off status

If you find that your on/off status is inverted, press the RealitySwitch Plus button more than 10 seconds until the blue LED lights up.

### 2. Factory reset

If you want to factory reset RealitySwitch Plus, long press the button more than 30 seconds until



the blue LED changes from on to fast blinking.  
*(Attention: please make sure you press the button longer enough till the blue LED status keeps fast blinking.)*

### **3. Missing wireless connection**

Generally it will be automatically reconnected when putting the device close to the Echo Plus or Hub. If the problem persists (LED blinking slowly), please try to reconnect/re-discover your device with the Echo plus or Hub.

### **4. How to pair again with Echo Plus clearly**

Sometimes you need to reset the device and the Echo Plus to pair again clearly with steps below:

- Reset the Echo Plus for 15 seconds until its orange LED lights up.
- Reset the device for 30 seconds until the LED changes from on to fast blinking.
- Reconnect/re-pair the device with the app.

### **5. Tips to enlarge wireless working distance**

You can try to optimize the mesh net by keeping any two of the device, Echo Plus or router closer to get a better connectivity performance.

### **6. Battery with low voltage**

If the LED double blinks indicating the batteries low status, please replace the batteries.

## **7. Suggestions for pairing with Wink HUB**

To avoid interference, it is recommended to follow the user manual of Wink HUB during the setup process.

## **8. How to adapt the height between the switch body and your existing panel.**

In some special cases, you may need to add spacers and/or gaskets to increase the distance between the RealitySwitch Plus body and the underlying switch.

## **Warning**

---

There are two AA batteries in our product, please pay attention to safety and discard the used batteries in the recyclable trash can.

## **Limited Warranty**

---

If you have any further questions, please contact us at [support@3reality.com](mailto:support@3reality.com), or visit FAQ at [www.3reality.com/faq](http://www.3reality.com/faq)

For more detail about the limited warranty, please visit:

[www.3reality.com/warranty](http://www.3reality.com/warranty)

### FCC Statement:

Any Changes or modifications not expressly approved by the party responsible for compliance could void the user's authority to operate the equipment. This device complies with part 15 of the FCC Rules. Operation is subject to the following two conditions:

(1) This device may not cause harmful interference, and

(2) This device must accept any interference received, including interference that may cause undesired operation.

### FCC Radiation Exposure Statement:

This equipment complies with FCC radiation exposure limits set forth for an uncontrolled environment .This equipment should be installed and operated with minimum distance 20cm between the radiator& your body.