

FIGURE 7
120 VAC DUAL 20 A WISER CONTROL RELAY (QO200PWX120)
COVER REMOVE

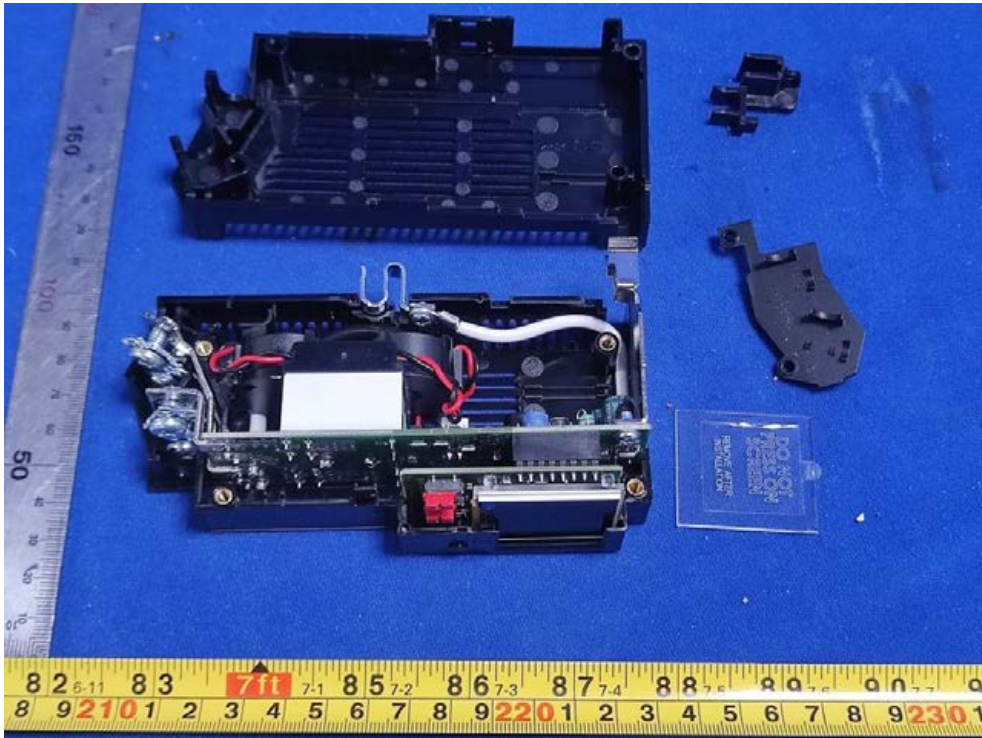


FIGURE 8
120 VAC DUAL 20 A WISER CONTROL RELAY (QO200PWX120)
POWERBOARD FRONT

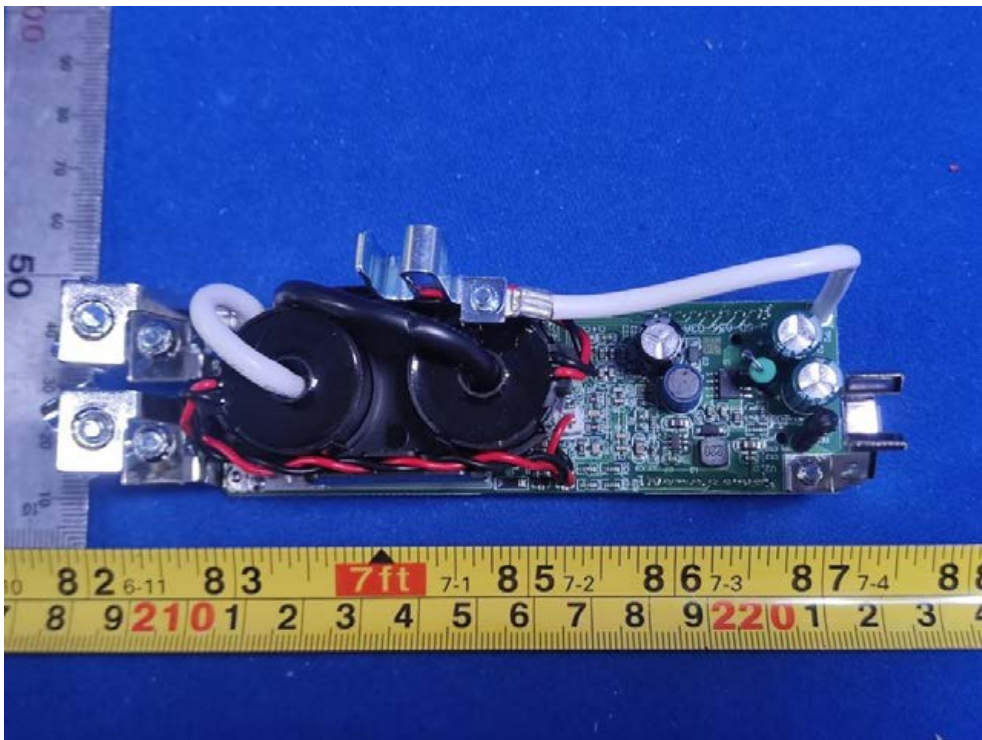


FIGURE 9
120 VAC DUAL 20 A WISER CONTROL RELAY (QO200PWX120)
POWERBOARD BACK

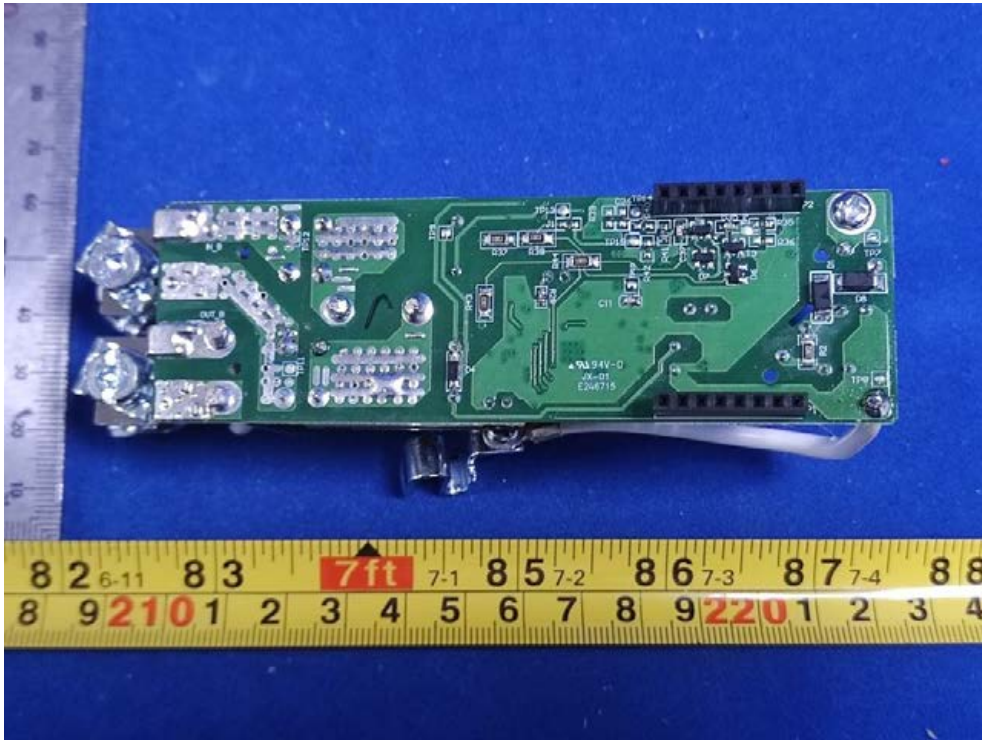


FIGURE 10
120 VAC DUAL 20 A WISER CONTROL RELAY (QO200PWX120)
CHIP&CRYSTAL ON POWERBOARD

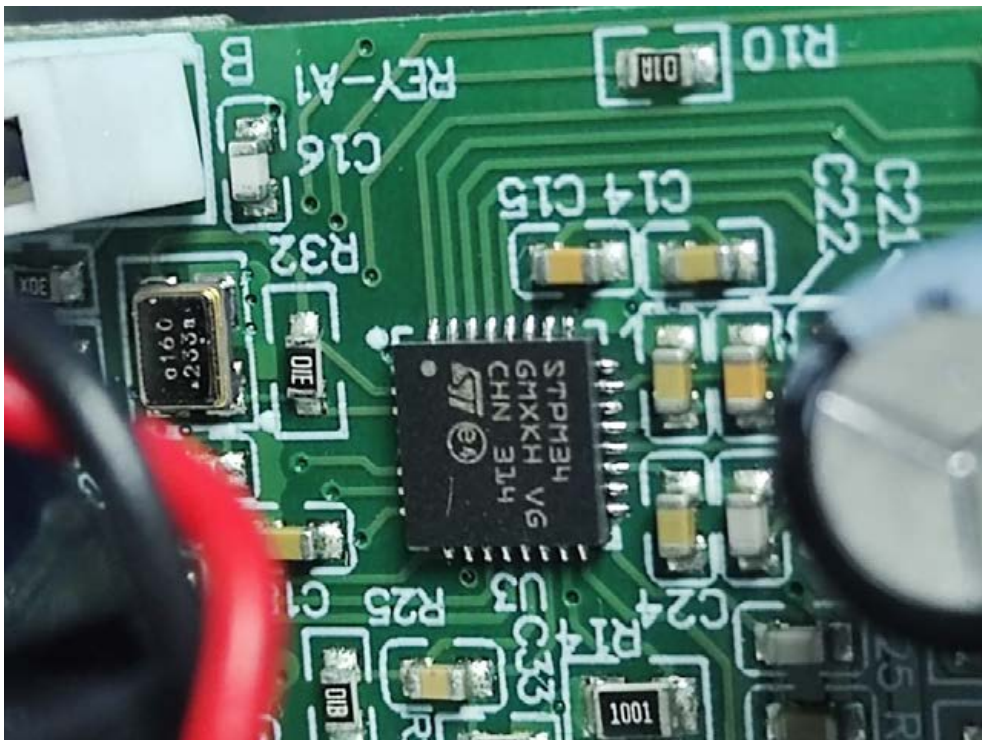


FIGURE 11
120 VAC DUAL 20 A WISER CONTROL RELAY (QO200PWX120)
RF BOARD FRONT

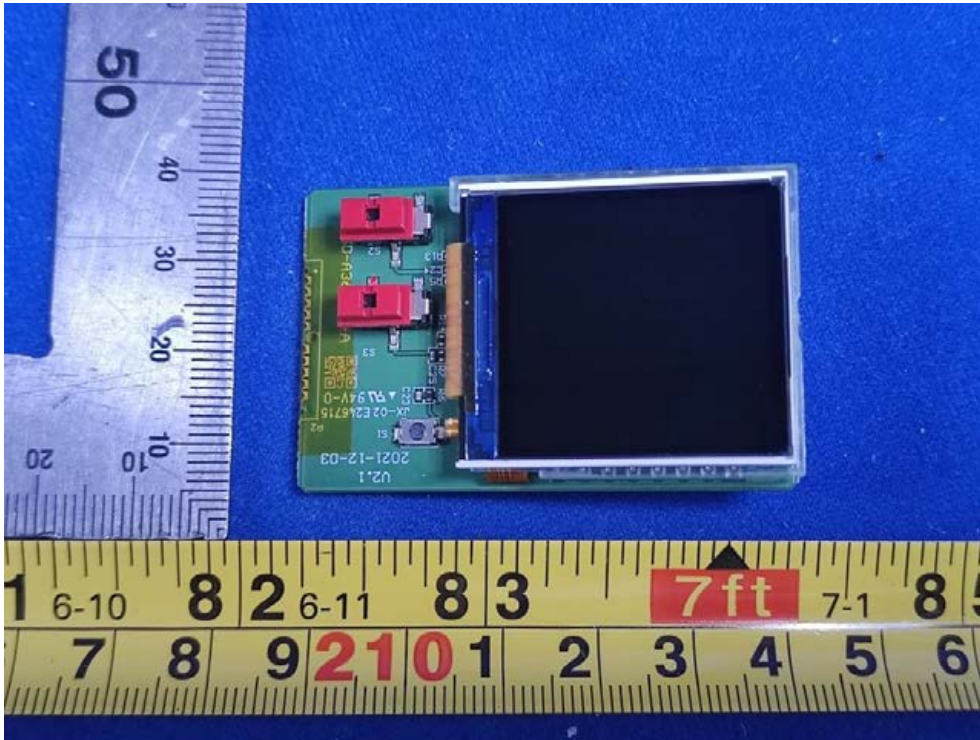


FIGURE 12
120 VAC DUAL 20 A WISER CONTROL RELAY (QO200PWX120)
RF BOARD BACK

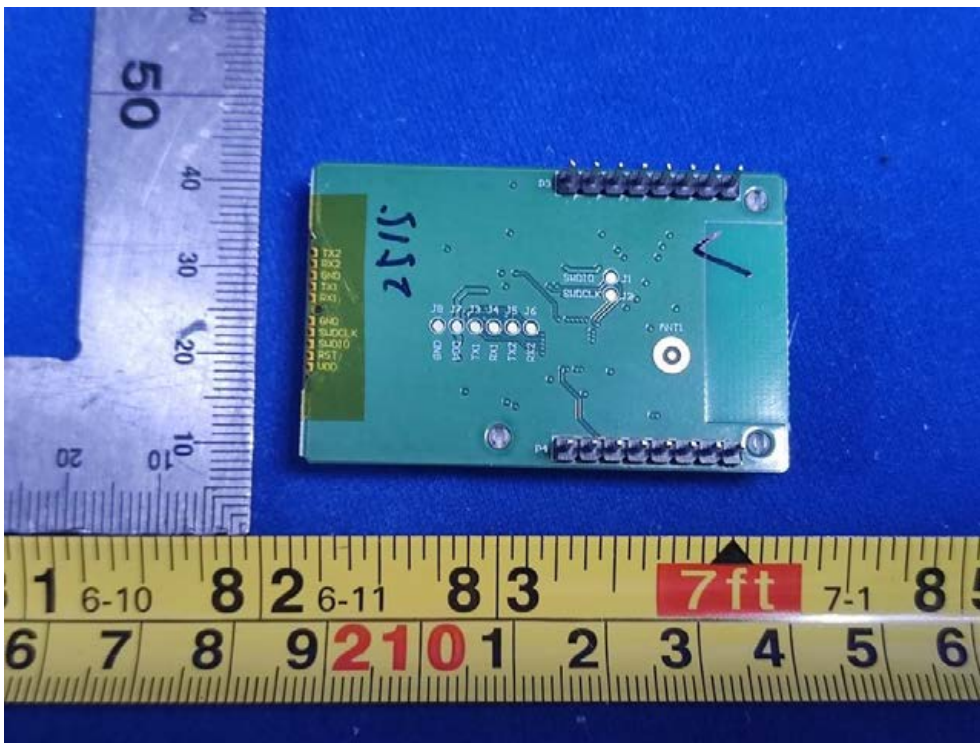


FIGURE 13
120 VAC DUAL 20 A WISER CONTROL RELAY (QO200PWX120)
RF BOARD VIEW

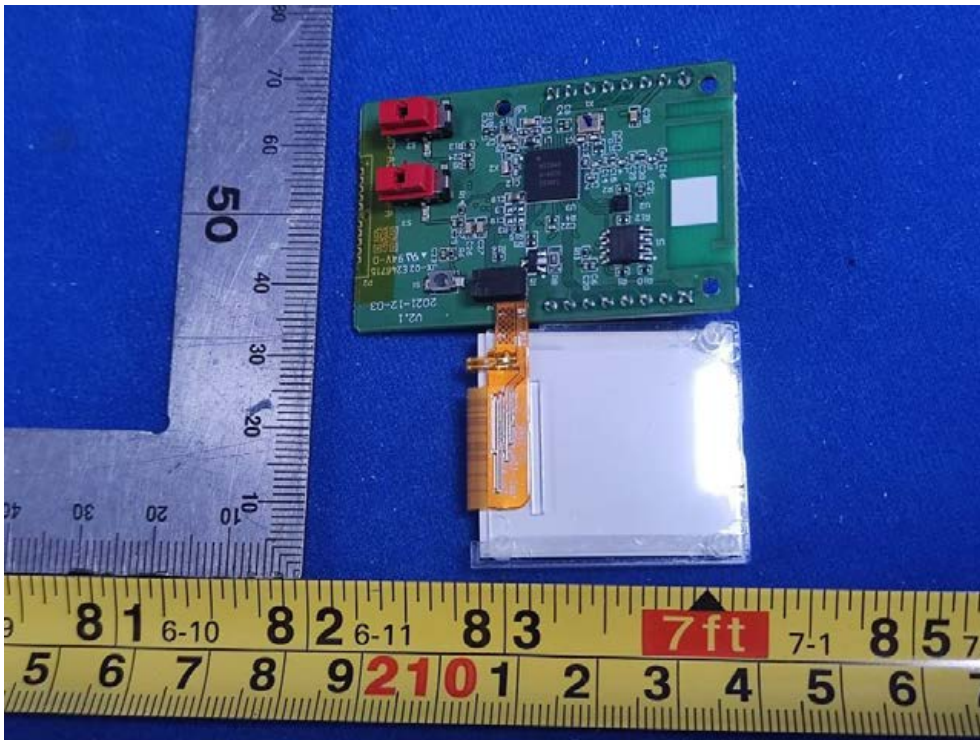


FIGURE 14
120 VAC DUAL 20 A WISER CONTROL RELAY (QO200PWX120)
CHIP & CRYSTAL ON RF BOARD

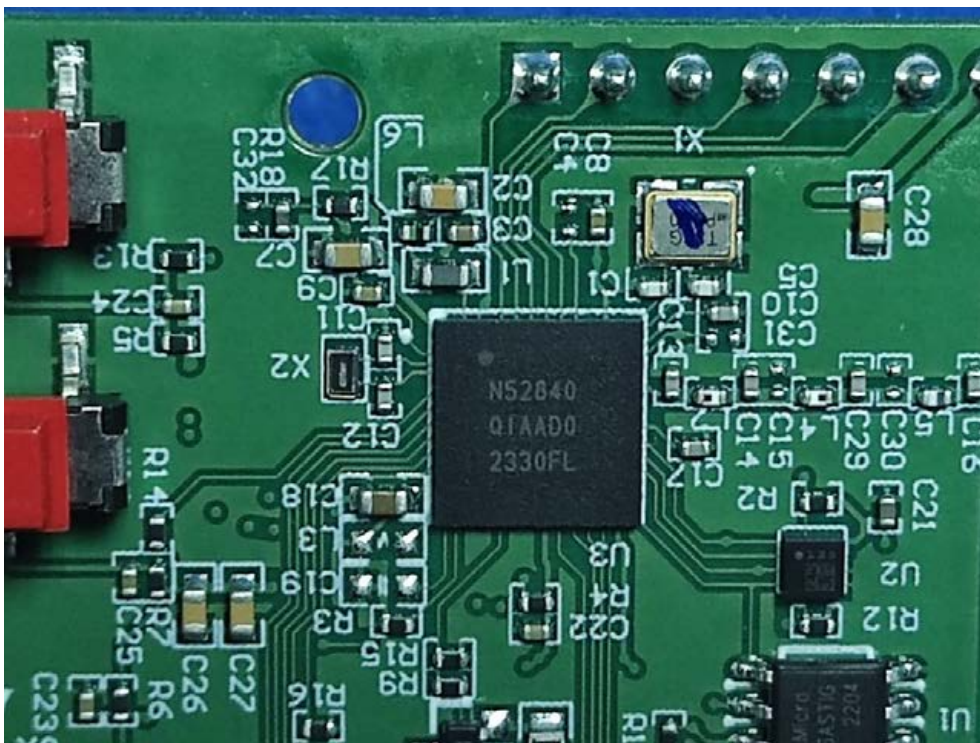
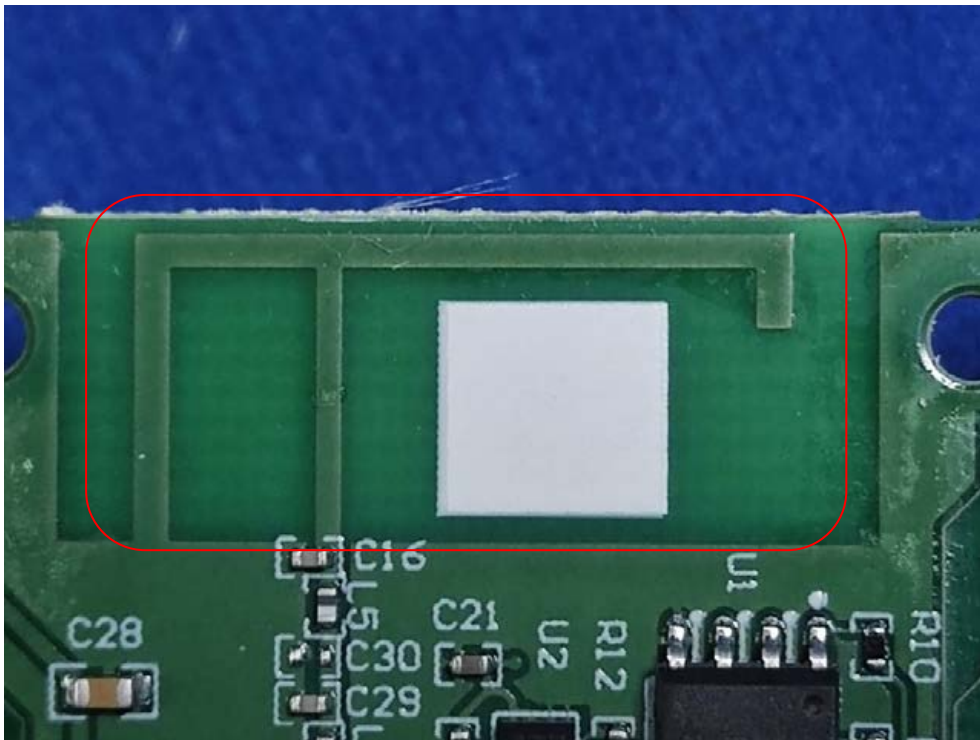


FIGURE 15
120 VAC DUAL 20 A WISER CONTROL RELAY (QO200PWX120)
ANTENNA



-END-