

GE Lighting

A SAVANT COMPANY

GRAPHICS APPROVAL
Approvals designate all items on checklist have been reviewed & are correct in addition to other organizational responsibilities.

REVIEWED DATE	SIGNATURE	PACKAGING GRAPHICS
<input type="checkbox"/>	<input type="checkbox"/>	<input type="checkbox"/>
<input type="checkbox"/>	<input type="checkbox"/>	<input type="checkbox"/>

Proof Reading - Spelling Website
 Proof against TDS request Graphics Printability

SKU LISTING INFO:	93129778 NPI LED+ BR30 Speaker SW 6413770
REVISION (DATE) PA:	3 (07-07-21) JCS
BAR CODE SPEC:	100% No BWR
INSERT (IF SHARED):	None
SUPPLIER PROJECT:	N/A
PRINT METHOD:	Offset/Litho
GE DIE:	DL-10930
PK (VERSION):	PK-00106461-1

PC93129778 CHN

THIS ART IS SUPPLIED AT 100% SCALE
DO NOT RESIZE, RESHAPE OR ALTER

NOTE: This equipment has been tested and found to comply with the limits for a Class B digital device, pursuant to Part 15 of the FCC Rules. These limits are designed to provide reasonable protection against harmful interference in a residential installation. This equipment generates, uses and can radiate radio frequency energy and, if not installed and used in accordance with the instructions, may cause harmful interference to radio communications. However, there is no guarantee that interference will not occur in a particular installation. If this equipment does cause harmful interference to radio or television reception, which can be determined by turning the equipment off and on, the user is encouraged to try to correct the interference by one or more of the following measures: reorient or relocate the receiving antenna, increase the separation between the equipment and receiver, connect the equipment into an outlet on a circuit different from that to which the receiver is connected, or consult the dealer or an experienced radio/TV technician for help.



Soft White +
8 Additional color settings

65w
replacement**
10w

This equipment complies with FCC radiation exposure limits set forth for an uncontrolled environment. This equipment should be installed and operated with minimum distance of 20 cm between the radiator and your body.

113.0



Quality light and premium sound



LIGHT + SPEAKER

This simple LED bulb connects to your phone, tablet, TV or other Bluetooth® compatible device so sound streams from your light source. Change between everyday soft white or 8 vivid colors. Sync up to ten bulbs to create wire-free, high-quality surround sound. Perfect for parties, holidays, or creating the right moods in your home.

Simply Screw In This LED Bulb To Enjoy

Control light and speaker separately with included remote
Dimmable soft white for cozy moods
65 watt equivalent light output for everyday use



Limited Warranty: Guaranteed to last 3 years based on rated life at 3 hours use per day at 120V. If this bulb does not last for 3 years (based on 3 hours per day / 7 days per week) return bulb, proof of purchase and your name and address to GE Lighting, a Savant company, Product Service Dept. 1975 Noble Road, Cleveland OH 44112 for a replacement. BULB REPLACEMENT IS SAVANT TECHNOLOGIES LLC'S SOLE WARRANTY OBLIGATION AND INCIDENTAL AND CONSEQUENTIAL DAMAGES ARE EXCLUDED. Some states do not allow the exclusion or limitation of incidental or consequential damages, so the above exclusion may not apply to you. This warranty gives you specific legal rights and you may also have other rights which vary from location to location.

CAUTION

Risk Of Electric Shock - Suitable for damp locations. Not for use in totally enclosed luminaires.

Not evaluated for use with emergency exit fixtures or emergency exit lights. Performance may vary with electronic timers, photocells or dimmers. Not for use in totally enclosed fixtures. This device complies with Part 15 of the FCC Rules. Operation is subject to the following two conditions: (1) this device may not cause harmful interference, and (2) this device must accept any interference received, including interference that may cause undesired operation. Any changes or modifications not expressly approved by the manufacturer could void the user's authority to operate the equipment.

Minimum starting temperature -20 °C.

WARNING

Chemical Burn Hazard- Do not ingest or swallow coin cell battery. This remote control contains a coin cell battery. If the coin cell battery is swallowed or ingested, it can cause severe internal burns in just 2 hours and can lead to death. Keep new and used coin cell batteries away from children. If the battery compartment does not close securely, stop using the remote control and keep away from children. If you think coin cell batteries have been swallowed or placed inside any part of the body, seek immediate medical attention.

GE is a trademark of General Electric Company. Used under trademark license.

Manufactured for Savant Technologies LLC
Nela Park
Cleveland, Ohio 44112-1719
www.gelighting.com
Made in China



SPEAKER
Connect through Bluetooth® for high quality sound

+ COLOR
with PARTY MODE SETTING
Lights sync up with your music

Sync up to ten bulbs with no wiring or hub required
Remote with speaker and light control included

Soft White +
8 Additional color settings

65w
replacement**
10w

Brightness	Estimated Energy Cost
700 lumens	\$1.20 per year

LED BR30
Remote with speaker & light control
Works with most dimmer switches

1 BULB

PC: 93129778
Desc: LED+10DBR30M/SWRGSPK-1T
PK-00106461-1



LED+ A Bright Idea In Every Bulb

LED+ a simple addition to everyday light. Each bulb has one extra feature to make life a little better. With simple functions built right into each bulb, LED+ is an easy way to get more out of your lights without an app, hub or WIFI required.

For more information visit
gelighting.com/led-plus

LED BR30 Medium Base
lasts 22 years*
saves \$151 on energy**

Lighting Facts Per Bulb	
Brightness	700 lumens
Estimated Yearly Energy Cost \$1.20	Based on 3 hrs/day, 11¢/kWh Cost depends on rates and use
Life	Based on 3 hrs/day 22.8 years
Light Appearance	Warm 2700 K Cool
Energy Used	10 watts

Dimming performance may vary by dimmer. Go to: gelighting.com/dimming for more information.

*Based on 3 hours use per day.
**Electricity cost savings based on using the bulb for 25,000 hour rated life at 11¢ per kilowatt hour compared to twelve 65-watt halogen bulbs (rated life 2000 hrs). Provides the same light output (700 lumens vs. 700 lumens).

379.5

168.0

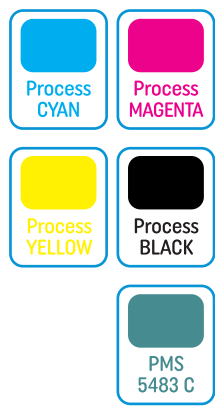
139.0

113.0

139.0

113.0

524.0



GE Lighting A SAVANT COMPANY		
REVIEWED DATE	SIGNATURE	PACKAGING GRAPHICS
<input type="checkbox"/> Proof Reading - Spelling	<input type="checkbox"/> Website	
<input type="checkbox"/> Proof against TDS request	<input type="checkbox"/> Graphics Printability	

SKU LISTING INFO:	93129994 Update Remote & QSG 6578138
REVISION (DATE) PA:	1 (10-21-21) JCS
BAR CODE SPEC:	100% No BWR
INSERT (IF SHARED):	None
SUPPLIER PROJECT:	N/A
PRINT METHOD:	Offset/Litho
GE DIE:	DL-10930
PK (VERSION):	PK-00107254-2

PC93129994 CHN

THIS ART IS SUPPLIED AT 100% SCALE
DO NOT RESIZE, RESHAPE OR ALTER

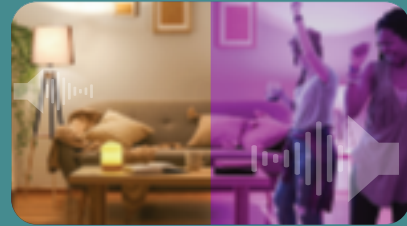
Garantie limitée: Durée garantie de 3 ans, basée sur la durée nominale, pour une utilisation domestique de 3 heures par jour à 120 V. Si cette ampoule ne dure pas 3 ans, retournez le code à barres et le coupon de caisse accompagnés de vos nom et adresse à : GE Lighting, a Savant company, Product Service Dept., 1975 Noble Road, Cleveland, OH 44112, USA pour un remplacement. CE REMPLACEMENT EST LA SEULE OBLIGATION DE SAVANT TECHNOLOGIES LLC'S EN VERTU DE LA GARANTIE, ET LES DOMMAGES ACCES-VOIRES ET CONSECUTIFS SONT EXCLUS. Certains États ou provinces interdisent d'exclure ou de limiter les dommages consécutifs ou accessoires, par conséquent, l'exclusion décrite ci-dessus pourrait ne pas s'appliquer dans votre cas. Cette garantie vous confère certains droits en vertu de la loi, et vous pouvez avoir également d'autres droits suivant votre lieu de résidence.

Pour se conformer aux exigences de conformité à l'exposition FCC et IC RF, l'appareil doit être situé à une distance d'au moins 20 cm de toutes les personnes pendant le fonctionnement normal. Les antennes utilisées avec ce produit ne doivent pas être colocalisées ou fonctionner conjointement avec une autre antenne ou un émetteur.



LED+

A simple addition to everyday light.™



Quality light and premium sound
Qualité de lumière et son de première qualité

LIGHT + SPEAKER

This simple LED bulb connects to your phone, tablet, TV or other Bluetooth™ compatible device so sound streams from your light source. Change between everyday soft white or 8 vivid colours. Sync up to ten bulbs to create wire-free, high-quality surround sound. Perfect for parties, holidays, or creating the right moods in your home.

LUMIÈRE ET HAUT-PARLEUR

Cette simple ampoule à DEL se connecte à votre téléphone, tablette, téléviseur ou autre appareil compatible Bluetooth™ pour que le son soit diffusé à partir de votre source lumineuse. Changez entre le blanc doux du quotidien ou 8 couleurs vives. Synchronisez jusqu'à dix ampoules pour créer un son ambiphonique de haute qualité sans fil. Parfait pour les fêtes, les vacances ou pour créer les bonnes ambiances dans votre maison.

Simply Screw In This LED Bulb To Enjoy

Control light and speaker separately with included remote
Dimmable soft white for cozy moods
8 different vivid RGB light colours
Light synchronized to music with party mode
Uniform sound or programmable left & right channels

Vissez simplement cette ampoule à DEL pour en profiter

Contrôlez la lumière et le haut-parleur séparément avec la télécommande incluse
Blanc doux pour des ambiances douillettes
8 couleurs de lumière RVB vives différentes
Lumière synchronisée à la musique avec le mode fête
Son uniforme ou canaux gauche et droit programmables

Limited Warranty: Guaranteed to last 3 years based on rated life at 3 hours use per day at 120V. If this bulb does not last for 3 years (based on 3 hours per day / 7 days per week) return bulb, proof of purchase and your name and address to GE Lighting, a Savant company, Product Service Dept., 1975 Noble Road, Cleveland OH 44112 for a replacement. BULB REPLACEMENT IS SAVANT TECHNOLOGIES LLC'S SOLE WARRANTY OBLIGATION AND INCIDENTAL AND CONSEQUENTIAL DAMAGES ARE EXCLUDED. Some states do not allow the exclusion or limitation of incidental or consequential damages, so the above exclusion may not apply to you. This warranty gives you specific legal rights and you may also have other rights which vary from location to location.

To comply with FCC and IC RF exposure compliance requirements, the device should be located at a distance of at least 20cm from all persons during normal operation. The antenna used for this product must not be co-located or operated in conjunction with any other antenna or transmitter.

113.0



LED+

A simple addition to everyday light.™



HAUT-PARLEUR

Connectez-vous via Bluetooth® pour un son de haute qualité

COULEUR

avec RÉGLAGE DU MODE FÊTE, les lumières se synchronisent avec votre musique

Synchronisez jusqu'à dix ampoules sans câblage ni concentrateur requis

Télécommande avec haut-parleur et commande d'éclairage inclus

Blanc doux +
8 paramètres de couleur supplémentaires

65w | 10w
remplacement**



DEL BR30

Télécommande avec haut-parleur et commande d'éclairage

Fonctionne avec la plupart des commutateurs de gradateur

temp. de couleur : 2 700 K

flux lumineux : 700 lumens

consommation énergétique : 10 watts

durée de vie : 25 000 heures

contient : 1 ampoule

contient : 1 télécommande couleur

LED+

Une idée lumineuse dans chaque ampoule

DEL+ est un ajout simple à la lumière quotidienne. Chaque ampoule comporte une fonction supplémentaire pour rendre votre vie encore plus agréable. Grâce à des fonctions simples intégrées dans chaque ampoule, DEL+ est un moyen facile de tirer le meilleur parti de vos lumières sans application, concentrateur ou Wi-Fi.

Pour plus d'informations, visitez : gelifighting.com/led-plus

économisez 151\$ par ampoule en énergie**

durée de vie de 22 ans*

GARANTIE LIMITÉE
3 ans
Voir les robots intérieurs pour plus de détails.

MISE EN GARDE

Risque de décharge électrique - Produit homologué pour les endroits humides. Ne pas utiliser avec des luminaires entièrement fermés.

N'est pas évalué pour l'utilisation avec des luminaires ni des lampes de sortie de secours. La performance peut varier lors de l'utilisation avec des minuteries électroniques, des cellules photo-électriques ou des gradateurs. Cet appareil est conforme à la partie 15 des règles de la FCC et aux normes RSS exemptes de licence d'Industrie Canada. L'exploitation est soumise aux deux conditions suivantes: 1. Cet appareil ne doit pas provoquer d'interférences nuisibles. 2. Cet appareil doit accepter toute interférence reçue, y compris toute interférence pouvant provoquer un fonctionnement indésirable. Tout changement non expressément autorisé par le fabricant peut annuler l'autorité de l'utilisateur à utiliser cet équipement.

Température minimum de démarrage -20° C.
Cet appareil est conforme à la norme canadienne NMB-005B

AVERTISSEMENT

Risque de brûlure chimique - Ne pas ingérer ou avaler la pile bouton. Cette télécommande comporte une pile bouton. Si la pile bouton est avalée ou ingérée, elle peut causer des brûlures internes graves en seulement 2 heures et peut entraîner la mort. Garder les piles boutons neuves et usagées hors de la portée des enfants. Si le compartiment de la pile ne se ferme pas solidement, cesser d'utiliser la télécommande; la conserver hors de la portée des enfants. S'il y a un risque qu'une pile bouton ait été avalée ou introduite dans une partie quelconque du corps, consulter immédiatement un médecin.

Performances réglables peuvent varier. Allez à : gelifighting.com/dimming pour plus d'information.

*Basé sur 3 heures d'utilisation par jour.
**Économies d'électricité basées sur la consommation de l'ampoule de 25 000 heures de durée nominale à 11° C par kilowattheure par rapport à 12 ampoules incandescence de 65 watts (durée nominale de 2 000 heures). Cette ampoule fournit la même puissance lumineuse (700 lumens c. 700 lumens).



LED+

A simple addition to everyday light.™



SPEAKER

Connect through Bluetooth® for high quality sound

COULEUR

with PARTY MODE SETTING
Lights sync up with your music

Sync up to ten bulbs with no wiring or hub required

Remote with speaker and light control included

Soft White +
8 Additional colour settings

65w | 10w
replacement**



LED BR30

Remote with speaker & light control

Works with most dimmer switches

colour temp.: 2700 K

light output: 700 lumens

energy used: 10 watts

life: 25,000 hours

contains: 1 bulb

contains: 1 colour control remote

LED+

A Bright Idea In Every Bulb

LED+ a simple addition to everyday light. Each bulb has one extra feature to make life a little better. With simple functions built right into each bulb, LED+ is an easy way to get more out of your lights without an app, hub or WIFI required.

For more information visit gelifighting.com/led-plus

saves \$151 on energy** | lasts 22 years* | LIMITED WARRANTY See inside flaps for details.

CAUTION

Risk Of Electric Shock - Suitable for damp locations. Not for use in totally enclosed luminaires.

Not evaluated for use with emergency exit fixtures or emergency exit lights. Performance may vary with electronic timers, photocells or dimmers. This device complies with Part 15 of the FCC Rules and Industry Canada license-exempt RSS standard(s). Operation is subject to the following two conditions: 1. This device may not cause harmful interference. 2. This device must accept any interference received, including any interference that may cause undesired operation. Any changes or modifications not expressly approved by the manufacturer could void the user's authority to operate the equipment.

Minimum starting temperature -20° C.
This device complies with CAN ICES-005 B

WARNING

Chemical Burn Hazard- Do not ingest or swallow coin cell battery. This remote control contains a coin cell battery. If the coin cell battery is swallowed or ingested, it can cause severe internal burns in just 2 hours and can lead to death. Keep new and used coin cell batteries away from children. If the battery compartment does not close securely, stop using the remote control and keep away from children. If you think coin cell batteries have been swallowed or placed inside any part of the body, seek immediate medical attention.

Dimming performance may vary by dimmer. Go to: gelifighting.com/dimming for more information.

*Based on 3 hours use per day.
**Electricity cost savings based on using the bulb for 25,000 hour rated life at 11° per kilowatt hour compared to twelve 65-watt incandescent bulbs (rated life 2000 hrs). Provides the same light output (700 lumens vs. 700 lumens).

GE is a trademark of General Electric Company. Used under trademark license.

GE est une marque de commerce de General Electric Company. Utilisé sous licence de marque de commerce.

Manufactured for Savant Technologies LLC
Fabriqué pour Savant Technologies LLC

Nela Park
Cleveland, Ohio 44112-1719
www.gelifighting.com
Made in China • Fabriqué en Chine



379.5

168.0

NOTE: This equipment has been tested and found to comply with the limits for a Class B digital device pursuant to Part 15 of the FCC Rules. These limits are designed to provide reasonable protection against harmful interference in a residential installation. This equipment generates, uses and can radiate radio frequency energy and, if not installed and used in accordance with the instructions, may cause harmful interference to radio communications. However, there is no guarantee that interference will not occur in a particular installation. If this equipment does cause harmful interference to radio or television reception, which can be determined by turning the equipment off, the user is encouraged to try to correct the interference by one of the following measures: reorient or relocate the receiving antenna; increase the separation between the equipment and the receiver; use a different power outlet or a different electrical circuit; consult the dealer or an experienced radio/TV technician for help.

REMARQUE: cet équipement a été testé et a été jugé conforme aux limites d'un appareil numérique de classe B en vertu de la partie 15 des règles de la FCC. Ces limites sont conçues pour assurer une protection raisonnable contre le brouillage préjudiciable dans les installations résidentielles. Cet équipement produit, utilise et peut dégorger une énergie de fréquence radio. Si l'équipement provoque un brouillage préjudiciable à la réception de radio ou de télévision, ce brouillage peut être corrigé en changeant l'orientation de l'équipement, en changeant de prise de courant, en changeant de circuit électrique, en consultant le vendeur ou un technicien radio/télévision expérimenté.

139.0

113.0

139.0

113.0

524.0

