

198 Kezhu Road, Sciencetech Park, Guangzhou Economic & Technological
 Development District, Guangzhou, China 510663

Telephone: +86 (0) 20 82155555
 Fax: +86 (0) 20 82075059
 Email: ee.guangzhou@sgs.com

Report No.: GZEM181200013205
 Page: 1 of 21
 FCC ID: PUU-CPLGSTDBLW1

TEST REPORT

Application No.: GZEM1905013079CR
Applicant: GE Lighting
Address of Applicant: Nele park, Cleveland, OH 44112
Manufacturer: GE Lighting
Address of Manufacturer: Nele park, Cleveland, OH 44112
Factory: Nanchang Innotech Techonology Co.,Ltd
Address of Factory: No.399, Rule Lake Avenue, Nanchang Airport Economic Zone, Nanchang, China

Equipment Under Test (EUT):
FCC ID: PUU-CPLGSTDBLW1
EUT Name: Smart Plug
Model No.: CPLGSTDBLW1
Trade Mark: GE
Standard(s) : 47 CFR Part 15, Subpart C 15.247
Date of Receipt: 2019-05-27
Date of Test: 2019-05-30 to 2019-06-02
Date of Issue: 2019-03-04 (for original report GZEM181200013202)
 2019-06-12 (for the report GZEM181200013205)

| | |
|---------------------|--------------|
| Test Result: | Pass* |
|---------------------|--------------|

* In the configuration tested, the EUT complied with the standards specified above.

The CE mark as shown below can be used, under the responsibility of the manufacturer, after completion of an EU Declaration of Conformity and compliance with all relevant EU Directives.




Kobe Jian
 Lab Manager

The manufacturer should ensure that all products in series production are in conformity with the product sample detailed in this report. If the product in this report is used in any configuration other than that detailed in the report, the manufacturer must ensure the new system complies with all relevant standards. Any mention of SGS International Electrical Approvals or testing done by SGS International Electrical Approvals in connection with, distribution or use of the product described in this report must be approved by SGS International Electrical Approvals in writing.



Unless otherwise agreed in writing, this document is issued by the Company subject to its General Conditions of Service printed overleaf, available on request or accessible at <http://www.sgs.com/en/Terms-and-Conditions.aspx> and, for electronic format documents, subject to Terms and Conditions for Electronic Documents at <http://www.sgs.com/en/Terms-and-Conditions/Terms-e-Documents.aspx>. Attention is drawn to the limitation of liability, indemnification and jurisdiction issues defined therein. Any holder of this document is advised that information contained hereon reflects the Company's findings at the time of its intervention only and within the limits of Client's instructions, if any. The Company's sole responsibility is to its Client and this document does not exonerate parties to a transaction from exercising all their rights and obligations under the transaction documents. This document cannot be reproduced except in full, without prior written approval of the Company. Any unauthorized alteration, forgery or falsification of the content or appearance of this document is unlawful and offenders may be prosecuted to the fullest extent of the law. Unless otherwise stated the results shown in this test report refer only to the sample(s) tested and such sample(s) are retained for 30 days only.

| Revision Record | | | | |
|-----------------|---------|------------|----------|--------------------------------|
| Version | Chapter | Date | Modifier | Remark |
| 01 | | 2019-03-04 | | Original |
| 02 | | 2019-06-12 | | Copy report: product upgrading |
| | | | | |
| | | | | |

| | | | |
|---------------------------------|-------------------------------------------------------------------------------------|--|--------------------------|
| Authorized for issue by: | | | |
| Tested By |  | | 2019-05-30 to 2019-06-02 |
| | Kevin_Zhang /Project Engineer | | Date |
| Checked By |  | | 2019-06-12 |
| | Ricky_Liu /Reviewer | | Date |



Unless otherwise agreed in writing, this document is issued by the Company subject to its General Conditions of Service printed overleaf, available on request or accessible at <http://www.sgs.com/en/Terms-and-Conditions.aspx> and, for electronic format documents, subject to Terms and Conditions for Electronic Documents at <http://www.sgs.com/en/Terms-and-Conditions/Terms-e-Documents.aspx>. Attention is drawn to the limitation of liability, indemnification and jurisdiction issues defined therein. Any holder of this document is advised that information contained hereon reflects the Company's findings at the time of its intervention only and within the limits of Client's instructions, if any. The Company's sole responsibility is to its Client and this document does not exonerate parties to a transaction from exercising all their rights and obligations under the transaction documents. This document cannot be reproduced except in full, without prior written approval of the Company. Any unauthorized alteration, forgery or falsification of the content or appearance of this document is unlawful and offenders may be prosecuted to the fullest extent of the law. Unless otherwise stated the results shown in this test report refer only to the sample(s) tested and such sample(s) are retained for 30 days only.

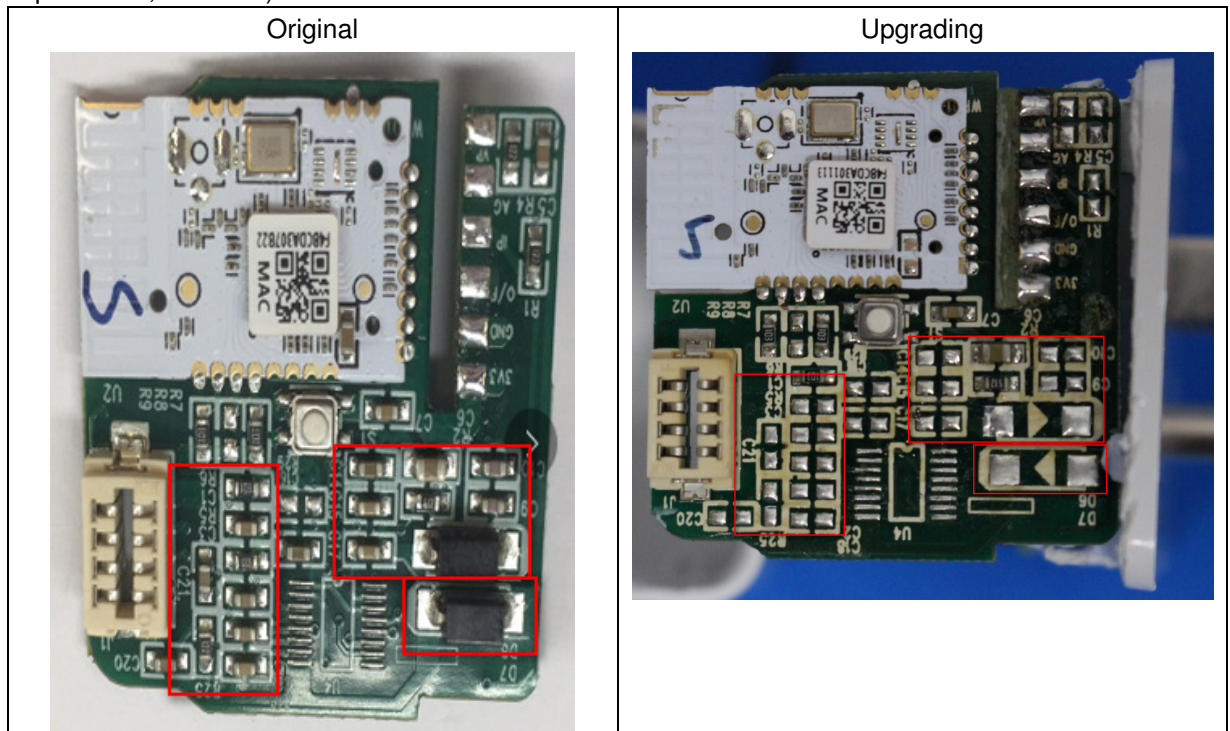
2 Test Summary

| Radio Spectrum Matter Part | | | | |
|-----------------------------------------------------|----------------------------------|----------------------------------------|----------------------------------------------|--------|
| Item | Standard | Method | Requirement | Result |
| Conducted Emissions at AC Power Line (150kHz-30MHz) | 47 CFR Part 15, Subpart C 15.247 | ANSI C63.10 (2013) Section 6.2 | 47 CFR Part 15, Subpart C 15.207 | Pass |
| Radiated Spurious Emissions | 47 CFR Part 15, Subpart C 15.247 | ANSI C63.10 (2013) Section 6.4,6.5,6.6 | 47 CFR Part 15, Subpart C 15.209 & 15.247(d) | Pass |

Remark for the report GZEM181200013205:

This test report (Ref. No.: GZEM181200013205) is only valid with the original test report (Ref. No.: GZEM181200013202). Only product upgrading.

According to the declaration from the applicant, the upgraded product in this report and the original product in original report were identical, only difference being some components (resistance, capacitance, tube etc.) were removed as below:



Therefore, only Conducted Emissions at AC Power Line (150kHz-30MHz) and Radiated Spurious Emissions were retested. Only new data was kept in this report GZEM181200013205, for original data please refer to GZEM181200013202 for more details. It is meet the requirement of FCC class I permission change process based on the retest data.



Unless otherwise agreed in writing, this document is issued by the Company subject to its General Conditions of Service printed overleaf, available on request or accessible at <http://www.sgs.com/en/Terms-and-Conditions.aspx> and, for electronic format documents, subject to Terms and Conditions for Electronic Documents at <http://www.sgs.com/en/Terms-and-Conditions/Terms-e-Document.aspx>. Attention is drawn to the limitation of liability, indemnification and jurisdiction issues defined therein. Any holder of this document is advised that information contained hereon reflects the Company's findings at the time of its intervention only and within the limits of Client's instructions, if any. The Company's sole responsibility is to its Client and this document does not exonerate parties to a transaction from exercising all their rights and obligations under the transaction documents. This document cannot be reproduced except in full, without prior written approval of the Company. Any unauthorized alteration, forgery or falsification of the content or appearance of this document is unlawful and offenders may be prosecuted to the fullest extent of the law. Unless otherwise stated the results shown in this test report refer only to the sample(s) tested and such sample(s) are retained for 30 days only.

3 Contents

| | Page |
|--------------------------------------------------------------|------|
| 1 Cover Page..... | 1 |
| 2 Test Summary..... | 3 |
| 3 Contents..... | 4 |
| 4 General Information..... | 5 |
| 4.1 Details of E.U.T..... | 5 |
| 4.2 Environment Parameter..... | 5 |
| 4.3 Description of Support Units..... | 7 |
| 4.4 Measurement Uncertainty..... | 7 |
| 4.5 Test Location..... | 7 |
| 4.6 Test Facility..... | 8 |
| 4.7 Deviation from Standards..... | 9 |
| 4.8 Abnormalities from Standard Conditions..... | 9 |
| 5 Equipment List..... | 10 |
| 6 Radio Spectrum Matter Test Results..... | 12 |
| 6.1 Conducted Emissions at AC Power Line (150kHz-30MHz)..... | 12 |
| 6.1.1 E.U.T. Operation..... | 13 |
| 6.1.2 Test Setup Diagram..... | 13 |
| 6.1.3 Measurement Procedure and Data..... | 13 |
| 6.2 Radiated Spurious Emissions..... | 16 |
| 6.2.1 E.U.T. Operation..... | 17 |
| 6.2.2 Test Setup Diagram..... | 17 |
| 6.2.3 Measurement Procedure and Data..... | 19 |



Unless otherwise agreed in writing, this document is issued by the Company subject to its General Conditions of Service printed overleaf, available on request or accessible at <http://www.sgs.com/en/Terms-and-Conditions.aspx> and, for electronic format documents, subject to Terms and Conditions for Electronic Documents at <http://www.sgs.com/en/Terms-and-Conditions/Terms-e-Document.aspx>. Attention is drawn to the limitation of liability, indemnification and jurisdiction issues defined therein. Any holder of this document is advised that information contained hereon reflects the Company's findings at the time of its intervention only and within the limits of Client's instructions, if any. The Company's sole responsibility is to its Client and this document does not exonerate parties to a transaction from exercising all their rights and obligations under the transaction documents. This document cannot be reproduced except in full, without prior written approval of the Company. Any unauthorized alteration, forgery or falsification of the content or appearance of this document is unlawful and offenders may be prosecuted to the fullest extent of the law. Unless otherwise stated the results shown in this test report refer only to the sample(s) tested and such sample(s) are retained for 30 days only.

Attention: To check the authenticity of testing /inspection report & certificate, please contact us at telephone: (86-755) 8307 1443, or email: CN.Doccheck@sgs.com
 No.198 Kezhu Road, Scientech Park, Guangzhou Economic & Technology Development District, Guangzhou, China 510663 t (86-20) 82155555 f (86-20) 82075058 www.sgs.com.cn
 中国·广州·经济技术开发区科学城科珠路198号 邮编: 510663 t (86-20) 82155555 f (86-20) 82075058 sgs.china@sgs.com

4 General Information

4.1 Details of E.U.T.

| | |
|---------------------|---------------------------------------------------------------------------------|
| Power Supply: | AC 120V 60Hz |
| Test Voltage: | AC 120V 60Hz |
| Cable: | N/A |
| Antenna Gain | 0.2dBi |
| Antenna Type | Integrated Antenna |
| Channel Spacing | 5MHz |
| Modulation Type | 802.11b: DSSS (CCK, DQPSK, DBPSK) 802.11g/n: OFDM (64QAM, 16QAM, QPSK, BPSK) |
| Number of Channels | 802.11b/g/n(HT20):11 802.11n(HT40):7 |
| Operation Frequency | 802.11b/g/n(HT20): 2412MHz to 2462MHz 802.11n(HT40): 2422MHz to 2452MHz |

4.2 Environment Parameter

| Environment Parameter | Selected Values During Tests | |
|-----------------------|------------------------------|------------|
| Relative Humidity | Ambient | |
| Value | Temperature(°C) | Voltage(V) |
| TNVN | 25 | 120 |
| TLVN | 0 | 120 |
| THVN | 50 | 120 |

Note:

- VN: Normal Voltage
- TN: Normal Temperature
- TL: Low Extreme Test Temperature
- TH: High Extreme Test Temperature



Unless otherwise agreed in writing, this document is issued by the Company subject to its General Conditions of Service printed overleaf, available on request or accessible at <http://www.sgs.com/en/Terms-and-Conditions.aspx> and, for electronic format documents, subject to Terms and Conditions for Electronic Documents at <http://www.sgs.com/en/Terms-and-Conditions/Terms-e-Documents.aspx>. Attention is drawn to the limitation of liability, indemnification and jurisdiction issues defined therein. Any holder of this document is advised that information contained hereon reflects the Company's findings at the time of its intervention only and within the limits of Client's instructions, if any. The Company's sole responsibility is to its Client and this document does not exonerate parties to a transaction from exercising all their rights and obligations under the transaction documents. This document cannot be reproduced except in full, without prior written approval of the Company. Any unauthorized alteration, forgery or falsification of the content or appearance of this document is unlawful and offenders may be prosecuted to the fullest extent of the law. Unless otherwise stated the results shown in this test report refer only to the sample(s) tested and such sample(s) are retained for 30 days only.

| Operation Frequency each of channel (802.11b/g/n HT20) | | | | | | | |
|--------------------------------------------------------|-----------|---------|-----------|---------|-----------|---------|-----------|
| Channel | Frequency | Channel | Frequency | Channel | Frequency | Channel | Frequency |
| 1 | 2412MHz | 5 | 2432MHz | 9 | 2452MHz | | |
| 2 | 2417MHz | 6 | 2437MHz | 10 | 2457MHz | | |
| 3 | 2422MHz | 7 | 2442MHz | 11 | 2462MHz | | |
| 4 | 2427MHz | 8 | 2447MHz | | | | |

| Operation Frequency each of channel(802.11n HT40) | | | | | |
|---------------------------------------------------|-----------|---------|-----------|---------|-----------|
| Channel | Frequency | Channel | Frequency | Channel | Frequency |
| 3 | 2422MHz | 6 | 2437MHz | 9 | 2452MHz |
| 4 | 2427MHz | 7 | 2442MHz | | |
| 5 | 2432MHz | 8 | 2447MHz | | |

Using test software was control EUT work in continuous transmitter and receiver mode. And select test channel as below:

For 802.11b/g/n (HT20):

| Channel | Frequency |
|----------------------------|-----------|
| The lowest channel (CH1) | 2412MHz |
| The middle channel (CH7) | 2442MHz |
| The highest channel (CH13) | 2462MHz |

For 802.11n (HT40):

| Channel | Frequency |
|----------------------------|-----------|
| The lowest channel (CH3) | 2422MHz |
| The middle channel (CH7) | 2442MHz |
| The highest channel (CH11) | 2452MHz |



Unless otherwise agreed in writing, this document is issued by the Company subject to its General Conditions of Service printed overleaf, available on request or accessible at <http://www.sgs.com/en/Terms-and-Conditions.aspx> and, for electronic format documents, subject to Terms and Conditions for Electronic Documents at <http://www.sgs.com/en/Terms-and-Conditions/Terms-e-Document.aspx>. Attention is drawn to the limitation of liability, indemnification and jurisdiction issues defined therein. Any holder of this document is advised that information contained hereon reflects the Company's findings at the time of its intervention only and within the limits of Client's instructions, if any. The Company's sole responsibility is to its Client and this document does not exonerate parties to a transaction from exercising all their rights and obligations under the transaction documents. This document cannot be reproduced except in full, without prior written approval of the Company. Any unauthorized alteration, forgery or falsification of the content or appearance of this document is unlawful and offenders may be prosecuted to the fullest extent of the law. Unless otherwise stated the results shown in this test report refer only to the sample(s) tested and such sample(s) are retained for 30 days only.

4.3 Description of Support Units

The EUT has been tested as an independent unit.

4.4 Measurement Uncertainty

| No. | Item | Measurement Uncertainty |
|-----|---------------------------------|---------------------------------|
| 1 | Radio Frequency | $\pm 5.5 \times 10^{-8}$ |
| 2 | Duty cycle | $\pm 0.57\%$ |
| 3 | Occupied Bandwidth | $\pm 3\%$ |
| 4 | RF Conducted power | $\pm 0.68\text{dB}$ |
| 5 | RF Power Density | $\pm 1.50\text{dB}$ |
| 6 | Conducted Spurious Emissions | $\pm 1.04\text{dB}$ |
| 7 | RF Radiated Power | $\pm 4.5\text{dB}$ (below 1GHz) |
| | | $\pm 4.8\text{dB}$ (above 1GHz) |
| 8 | Radiated Spurious Emission Test | $\pm 4.5\text{dB}$ (30MHz-1GHz) |
| | | $\pm 4.8\text{dB}$ (1GHz-18GHz) |
| 9 | Temperature | $\pm 0.4^\circ\text{C}$ |
| 10 | Humidity | $\pm 1.3\%$ |
| 11 | Supply Voltages | $\pm 1.5\%$ |
| 12 | Time | $\pm 3\%$ |

4.5 Test Location

All tests were performed at:

SGS-CSTC Standards Technical Services Co., Ltd., Guangzhou Branch EMC Laboratory,
 198 Kezhu Road, Sciencetech Park, Guangzhou Economic & Technology Development District,
 Guangzhou, China 510663

Tel: +86 20 82155555

Fax: +86 20 82075059

No tests were sub-contracted.



Unless otherwise agreed in writing, this document is issued by the Company subject to its General Conditions of Service printed overleaf, available on request or accessible at <http://www.sgs.com/en/Terms-and-Conditions.aspx> and, for electronic format documents, subject to Terms and Conditions for Electronic Documents at <http://www.sgs.com/en/Terms-and-Conditions/Terms-e-Document.aspx>. Attention is drawn to the limitation of liability, indemnification and jurisdiction issues defined therein. Any holder of this document is advised that information contained hereon reflects the Company's findings at the time of its intervention only and within the limits of Client's instructions, if any. The Company's sole responsibility is to its Client and this document does not exonerate parties to a transaction from exercising all their rights and obligations under the transaction documents. This document cannot be reproduced except in full, without prior written approval of the Company. Any unauthorized alteration, forgery or falsification of the content or appearance of this document is unlawful and offenders may be prosecuted to the fullest extent of the law. Unless otherwise stated the results shown in this test report refer only to the sample(s) tested and such sample(s) are retained for 30 days only.

Attention: To check the authenticity of testing /inspection report & certificate, please contact us at telephone: (86-755) 8307 1443, or email: CN.Doccheck@sgs.com
 No.198 Kezhu Road, Sciencetech Park, Guangzhou Economic & Technology Development District, Guangzhou, China 510663 t (86-20) 82155555 f (86-20) 82075058 www.sgsgroup.com.cn
 中国·广州·经济技术开发区科学城科珠路198号 邮编: 510663 t (86-20) 82155555 f (86-20) 82075058 sgs.china@sgs.com

4.6 Test Facility

The test facility is recognized, certified, or accredited by the following organizations:

● **NVLAP (Lab Code: 200611-0)**

SGS-CSTC Standards Technical Services Co., Ltd., Guangzhou EMC Laboratory is accredited by the National Voluntary Laboratory Accreditation Program (NVLAP/NIST). NVLAP Code: 200611-0.

The report must not be used by the client to claim product certification, approval, or endorsement by NVLAP, NIST, or any agency of the Federal Government.

● **ACMA**

SGS-CSTC Standards Technical Services Co., Ltd., EMC Laboratory can also perform testing for the Australian C-Tick mark as a result of our NVLAP accreditation.

● **SGS UK(Certificate No.: 32), SGS-TUV SAARLAND and SGS-FIMKO**

Have approved SGS-CSTC Standards Technical Services Co., Ltd., EMC Laboratory as a supplier of EMC TESTING SERVICES and SAFETY TESTING SERVICES.

● **CNAS (Lab Code: L0167)**

SGS-CSTC Standards Technical Services Co., Ltd., EMC Laboratory has been assessed and in compliance with CNAS-CL01:2006 accreditation criteria for testing laboratories (identical to

ISO/IEC 17025:2005 General Requirements) for the Competence of Testing Laboratories.

● **FCC Recognized 2.948 Listed Test Firm(Registration No.: 282399)**

SGS-CSTC Standards Technical Services Co., Ltd., EMC Laboratory has been registered and fully described in a report filed with the (FCC) Federal Communications Commission. The acceptance letter from the FCC is maintained in our files. Registration 282399, May 31, 2002.

● **FCC Recognized Accredited Test Firm(Registration No.: 486818)**

SGS-CSTC Standards Technical Services Co., Ltd., EMC Laboratory has been accredited and fully described in a report filed with the (FCC) Federal Communications Commission. The acceptance letter from the FCC is maintained in our files. Designation Number: CN5016, Test Firm Registration Number: 486818, Jul 13, 2017.

● **Industry Canada (Registration No.: 4620B, CAB identifier: CN0052)**

SGS-CSTC Standards Technical Services Co., Ltd., has been registered by Innovation Science and Economic Development Canada for Wireless Device Testing laboratories to test to Canadian radio equipment requirements. Registration No. 4620B, CAB identifier: CN0052.

● **VCCI (Registration No.: R-12460, C-12584, G-10449 and T-11179)**

The 10m Semi-anechoic chamber and Shielded Room of SGS-CSTC Standards Technical Services Co., Ltd. have been registered in accordance with the Regulations for Voluntary Control Measures with Registration No.: R-12460, C-12584, G-10449 and T-11179 respectively.

● **CBTL (Lab Code: TL129)**

SGS-CSTC Standards Technical Services Co., Ltd., E&E Laboratory has been assessed and fully comply with the requirements of ISO/IEC 17025:2005, the Basic Rules, IECEE 01 and Rules of procedure IECEE 02, and the relevant IECEE CB-Scheme Operational documents.



Unless otherwise agreed in writing, this document is issued by the Company subject to its General Conditions of Service printed overleaf, available on request or accessible at <http://www.sgs.com/en/Terms-and-Conditions.aspx> and, for electronic format documents, subject to Terms and Conditions for Electronic Documents at <http://www.sgs.com/en/Terms-and-Conditions/Terms-e-Documents.aspx>. Attention is drawn to the limitation of liability, indemnification and jurisdiction issues defined therein. Any holder of this document is advised that information contained hereon reflects the Company's findings at the time of its intervention only and within the limits of Client's instructions, if any. The Company's sole responsibility is to its Client and this document does not exonerate parties to a transaction from exercising all their rights and obligations under the transaction documents. This document cannot be reproduced except in full, without prior written approval of the Company. Any unauthorized alteration, forgery or falsification of the content or appearance of this document is unlawful and offenders may be prosecuted to the fullest extent of the law. Unless otherwise stated the results shown in this test report refer only to the sample(s) tested and such sample(s) are retained for 30 days only.

Attention: To check the authenticity of testing /inspection report & certificate, please contact us at telephone: (86-755) 8307 1443, or email: CN.Doccheck@sgs.com
 No.198 Kezhu Road, Scientech Park, Guangzhou Economic & Technology Development District, Guangzhou, China 510663 t (86-20) 82155555 f (86-20) 82075058 www.sgs.com.cn
 中国·广州·经济技术开发区科学城科珠路198号 邮编: 510663 t (86-20) 82155555 f (86-20) 82075058 sgs.china@sgs.com

4.7 Deviation from Standards

None

4.8 Abnormalities from Standard Conditions

None



Unless otherwise agreed in writing, this document is issued by the Company subject to its General Conditions of Service printed overleaf, available on request or accessible at <http://www.sgs.com/en/Terms-and-Conditions.aspx> and, for electronic format documents, subject to Terms and Conditions for Electronic Documents at <http://www.sgs.com/en/Terms-and-Conditions/Terms-e-Document.aspx>. Attention is drawn to the limitation of liability, indemnification and jurisdiction issues defined therein. Any holder of this document is advised that information contained hereon reflects the Company's findings at the time of its intervention only and within the limits of Client's instructions, if any. The Company's sole responsibility is to its Client and this document does not exonerate parties to a transaction from exercising all their rights and obligations under the transaction documents. This document cannot be reproduced except in full, without prior written approval of the Company. Any unauthorized alteration, forgery or falsification of the content or appearance of this document is unlawful and offenders may be prosecuted to the fullest extent of the law. Unless otherwise stated the results shown in this test report refer only to the sample(s) tested and such sample(s) are retained for 30 days only.
Attention: To check the authenticity of testing /inspection report & certificate, please contact us at telephone: (86-755) 8307 1443, or email: CN.Doccheck@sgs.com

5 Equipment List

| Conducted Emissions at AC Power Line (150kHz-30MHz) | | | | | |
|-----------------------------------------------------|-----------------|----------------|--------------|------------|--------------|
| Equipment | Manufacturer | Model No | Inventory No | Cal Date | Cal Due Date |
| Shielding Room | Zhong Yu | 8m x 3m x 3.8m | EMC0306 | N/A | N/A |
| Two-Line V-Netwok | R&S | ENV216 | EMC0118 | 2019-01-11 | 2020-01-10 |
| LISN | R&S | ENV216 | EMC2135 | 2018-09-21 | 2019-09-20 |
| EMI Test Receiver | Rohde & Schwarz | ESCS30 | EMC0506 | 2018-11-19 | 2019-11-18 |
| Coaxial Cable | HangTianXing | 2m | EMC0107 | 2017-07-23 | 2019-07-22 |
| Voltage Probe | SGS | N/A | EMC0106 | 2018-04-04 | 2020-04-03 |
| Conical Metal Housing | SGS-EMC | N/A | EMC0167 | 2018-04-19 | 2020-04-18 |
| Test Software E3c | Audix | Ver. 5.4.1221b | GZE100-62 | N/A | N/A |

| Radiated Spurious Emissions | | | | | |
|-------------------------------------|-----------------------------|---------------|--------------|------------|--------------|
| Equipment | Manufacturer | Model No | Inventory No | Cal Date | Cal Due Date |
| EMI Test Receiver | Rohde & Schwarz | ESIB26 | EMC0522 | 2019-01-20 | 2020-01-19 |
| EMI Test Receiver | Rohde & Schwarz | ESCI | EMC0056 | 2019-01-20 | 2020-01-19 |
| Chamber cable | HangTianXing | N/A | EMC0542 | 2017-06-30 | 2019-06-30 |
| Trilog Broadband Antenna 30MHz-1GHz | SCHWARZBECKME SS-ELEKTRONIK | VULB 9160 | EMC2025 | 2016-09-08 | 2019-09-07 |
| Bi-log Type Antenna | Schaffner -Chase | CBL6112B | EMC0524 | 2016-09-08 | 2019-09-07 |
| Bi-log Type Antenna | Schaffner -Chase | CBL6143 | EMC0519 | 2017-05-04 | 2020-05-03 |
| Horn Antenna 1GHz-18GHz | SCHWARZBECK MESS-ELEKTRONIK | BBHA 9120D | EMC2026 | 2016-09-09 | 2019-09-08 |
| 1GHz-26.5 GHz Pre-Amplifier | Agilent | 8449B | EMC0521 | 2019-01-07 | 2020-01-08 |
| Amplifier | HP | 8447F | EMC2065 | 2019-05-29 | 2020-05-28 |
| Pre-Amplifier MH648A | ANRITSU CORP | MH648A | EMC2086 | 2018-11-19 | 2019-11-18 |
| Active Loop Antenna | EMCO | 6502 | EMC0523 | 2018-03-05 | 2020-03-04 |
| High Pass Filter(915MHz) | FSY MICROWAVE | HM1465-9SS | EMC2079 | 2019-01-11 | 2020-01-10 |
| 2.4GHz Filter | Micro-Tronics | BRM 50702 | EMC2069 | 2019-01-11 | 2020-01-10 |
| 10m Semi-Anechoic Chamber | ETS | N/A | EMC0530 | 2017-06-18 | 2019-06-18 |
| 966 Anechoic Chamber | C.R.T | 9m x 6m x 6m | EMC2142 | 2017-12-19 | 2019-12-18 |
| MXE EMI Receiver | Keysight | N9038A | EMC2139 | 2018-11-19 | 2019-11-18 |
| EXA Signal Analyzer | Keysight | N9010A | EMC2138 | 2018-11-19 | 2019-11-18 |
| Trilog Broadband Antenna 30MHz-1GHz | SCHWARZBECKME SS-ELEKTRONIK | VULB 9168 | SEM003-18 | 2016-06-29 | 2019-06-28 |
| Test Software E3 | Audix | Ver.6.120110a | GZE100-61 | N/A | N/A |



Unless otherwise agreed in writing, this document is issued by the Company subject to its General Conditions of Service printed overleaf, available on request or accessible at <http://www.sgs.com/en/Terms-and-Conditions.aspx> and, for electronic format documents, subject to Terms and Conditions for Electronic Documents at <http://www.sgs.com/en/Terms-and-Conditions/Terms-e-Documents.aspx>. Attention is drawn to the limitation of liability, indemnification and jurisdiction issues defined therein. Any holder of this document is advised that information contained hereon reflects the Company's findings at the time of its intervention only and within the limits of Client's instructions, if any. The Company's sole responsibility is to its Client and this document does not exonerate parties to a transaction from exercising all their rights and obligations under the transaction documents. This document cannot be reproduced except in full, without prior written approval of the Company. Any unauthorized alteration, forgery or falsification of the content or appearance of this document is unlawful and offenders may be prosecuted to the fullest extent of the law. Unless otherwise stated the results shown in this test report refer only to the sample(s) tested and such sample(s) are retained for 30 days only.

Attention: To check the authenticity of testing /inspection report & certificate, please contact us at telephone: (86-755) 8307 1443, or email: CN.Doccheck@sgs.com
 No.198 Kezhu Road, Scientech Park, Guangzhou Economic & Technology Development District, Guangzhou, China 510663 t (86-20) 82155555 f (86-20) 82075058 www.sgs.com.cn
 中国·广州·经济技术开发区科学城科珠路198号 邮编: 510663 t (86-20) 82155555 f (86-20) 82075058 sgs.china@sgs.com

| General used equipment | | | | | |
|------------------------|--------------|----------|--------------|------------|--------------|
| Equipment | Manufacturer | Model No | Inventory No | Cal Date | Cal Due Date |
| DMM | Fluke | 73 | EMC0006 | 2018-07-20 | 2019-07-19 |
| DMM | Fluke | 73 | EMC0007 | 2018-07-19 | 2019-07-18 |



Unless otherwise agreed in writing, this document is issued by the Company subject to its General Conditions of Service printed overleaf, available on request or accessible at <http://www.sgs.com/en/Terms-and-Conditions.aspx> and, for electronic format documents, subject to Terms and Conditions for Electronic Documents at <http://www.sgs.com/en/Terms-and-Conditions/Terms-e-Document.aspx>. Attention is drawn to the limitation of liability, indemnification and jurisdiction issues defined therein. Any holder of this document is advised that information contained hereon reflects the Company's findings at the time of its intervention only and within the limits of Client's instructions, if any. The Company's sole responsibility is to its Client and this document does not exonerate parties to a transaction from exercising all their rights and obligations under the transaction documents. This document cannot be reproduced except in full, without prior written approval of the Company. Any unauthorized alteration, forgery or falsification of the content or appearance of this document is unlawful and offenders may be prosecuted to the fullest extent of the law. Unless otherwise stated the results shown in this test report refer only to the sample(s) tested and such sample(s) are retained for 30 days only.

Attention: To check the authenticity of testing /inspection report & certificate, please contact us at telephone: (86-755) 8307 1443, or email: CN.Doccheck@sgs.com

6 Radio Spectrum Matter Test Results

6.1 Conducted Emissions at AC Power Line (150kHz-30MHz)

Test Requirement 47 CFR Part 15, Subpart C 15.207

Test Method: ANSI C63.10 (2013) Section 6.2

Limit:

| Frequency of emission(MHz) | Conducted limit(dBμV) | |
|----------------------------|-----------------------|-----------|
| | Quasi-peak | Average |
| 0.15-0.5 | 66 to 56* | 56 to 46* |
| 0.5-5 | 56 | 46 |
| 5-30 | 60 | 50 |

*Decreases with the logarithm of the frequency.



Unless otherwise agreed in writing, this document is issued by the Company subject to its General Conditions of Service printed overleaf, available on request or accessible at <http://www.sgs.com/en/Terms-and-Conditions.aspx> and, for electronic format documents, subject to Terms and Conditions for Electronic Documents at <http://www.sgs.com/en/Terms-and-Conditions/Terms-e-Documents.aspx>. Attention is drawn to the limitation of liability, indemnification and jurisdiction issues defined therein. Any holder of this document is advised that information contained hereon reflects the Company's findings at the time of its intervention only and within the limits of Client's instructions, if any. The Company's sole responsibility is to its Client and this document does not exonerate parties to a transaction from exercising all their rights and obligations under the transaction documents. This document cannot be reproduced except in full, without prior written approval of the Company. Any unauthorized alteration, forgery or falsification of the content or appearance of this document is unlawful and offenders may be prosecuted to the fullest extent of the law. Unless otherwise stated the results shown in this test report refer only to the sample(s) tested and such sample(s) are retained for 30 days only.

Attention: To check the authenticity of testing /inspection report & certificate, please contact us at telephone: (86-755) 8307 1443, or email: CN.Doccheck@sgs.com

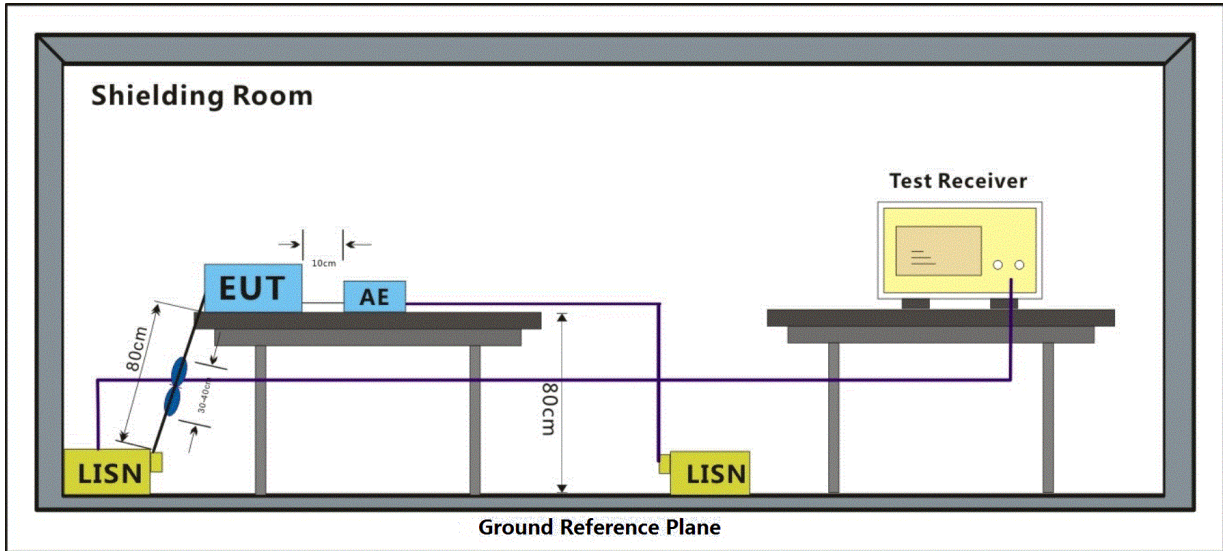
6.1.1 E.U.T. Operation

Operating Environment:

Temperature: 29.1 °C Humidity: 55 % RH Atmospheric Pressure: 1020 mbar

Test mode b: Keep the EUT in communication with other device via Wi-Fi.

6.1.2 Test Setup Diagram



6.1.3 Measurement Procedure and Data

- 1) The mains terminal disturbance voltage test was conducted in a shielded room.
- 2) The EUT was connected to AC power source through a LISN 1 (Line Impedance Stabilization Network) which provides a 50ohm/50μH + 5ohm linear impedance. The power cables of all other units of the EUT were connected to a second LISN 2, which was bonded to the ground reference plane in the same way as the LISN 1 for the unit being measured. A multiple socket outlet strip was used to connect multiple power cables to a single LISN provided the rating of the LISN was not exceeded.
- 3) The tabletop EUT was placed upon a non-metallic table 0.8m above the ground reference plane. And for floor-standing arrangement, the EUT was placed on the horizontal ground reference plane,
- 4) The test was performed with a vertical ground reference plane. The rear of the EUT shall be 0.4 m from the vertical ground reference plane. The vertical ground reference plane was bonded to the horizontal ground reference plane. The LISN 1 was placed 0.8 m from the boundary of the unit under test and bonded to a ground reference plane for LISNs mounted on top of the ground reference plane. This distance was between the closest points of the LISN 1 and the EUT. All other units of the EUT and associated equipment was at least 0.8 m from the LISN 2.
- 5) In order to find the maximum emission, the relative positions of equipment and all of the interface cables must be changed according to ANSI C63.10 on conducted measurement.

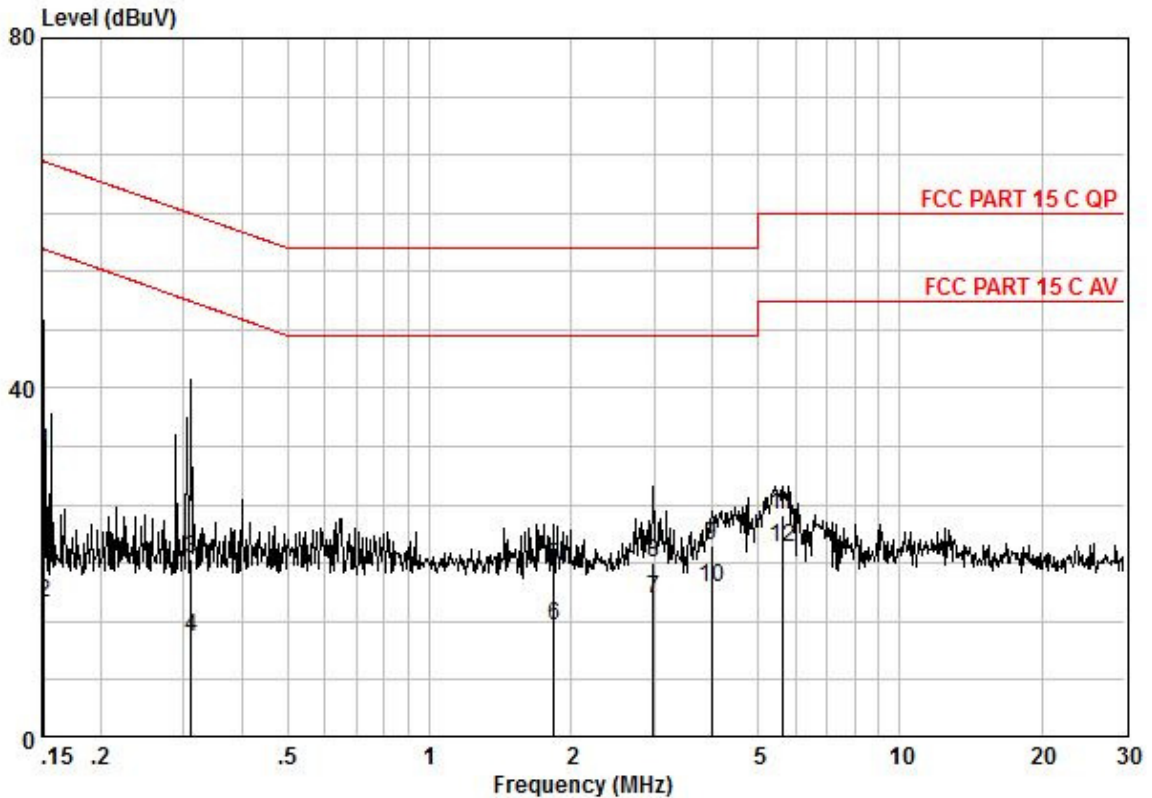
Remark: LISN=Read Level+ Cable Loss+ LISN Factor



Unless otherwise agreed in writing, this document is issued by the Company subject to its General Conditions of Service printed overleaf, available on request or accessible at <http://www.sgs.com/en/Terms-and-Conditions.aspx> and, for electronic format documents, subject to Terms and Conditions for Electronic Documents at <http://www.sgs.com/en/Terms-and-Conditions/Terms-e-Document.aspx>. Attention is drawn to the limitation of liability, indemnification and jurisdiction issues defined therein. Any holder of this document is advised that information contained hereon reflects the Company's findings at the time of its intervention only and within the limits of Client's instructions, if any. The Company's sole responsibility is to its Client and this document does not exonerate parties to a transaction from exercising all their rights and obligations under the transaction documents. This document cannot be reproduced except in full, without prior written approval of the Company. Any unauthorized alteration, forgery or falsification of the content or appearance of this document is unlawful and offenders may be prosecuted to the fullest extent of the law. Unless otherwise stated the results shown in this test report refer only to the sample(s) tested and such sample(s) are retained for 30 days only.

Attention: To check the authenticity of testing /inspection report & certificate, please contact us at telephone: (86-755) 8307 1443, or email: CN.Doccheck@sgs.com
 No.198 Kezhu Road, Scientech Park, Guangzhou Economic & Technology Development District, Guangzhou, China 510663 t (86-20) 82155555 f (86-20) 82075058 www.sgs.com.cn
 中国·广州·经济技术开发区科学城科珠路198号 邮编: 510663 t (86-20) 82155555 f (86-20) 82075058 sgs.china@sgs.com

Mode:b; Line:Live Line

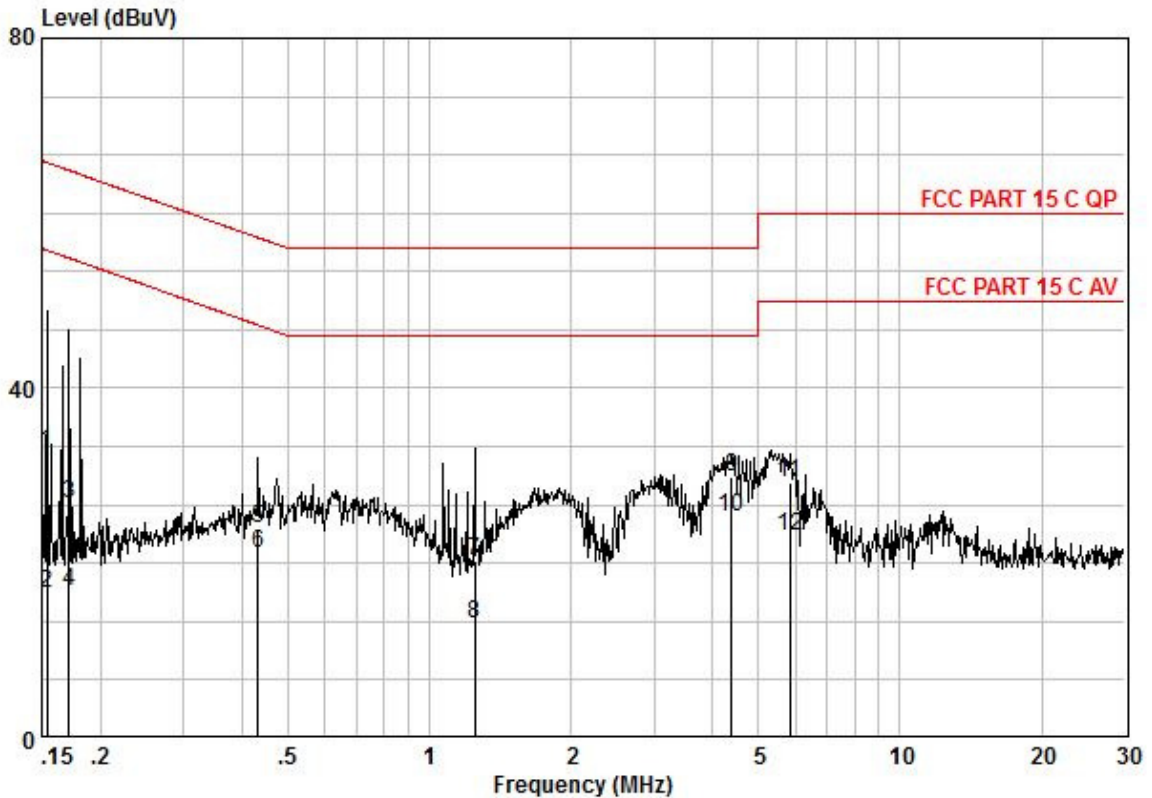


| Frequency MHz | read level dBUV | Cable Loss dB | LISN Factor dB | Measured level dBUV | Limit Line dBUV | Over limit dB | Remark |
|------------------|-----------------------|---------------------|----------------------|---------------------------|-----------------------|---------------------|---------|
| 0,15 | 22,92 | 0,10 | 9,67 | 32,69 | 65,91 | -33,22 | QP |
| 0,15 | 5,61 | 0,10 | 9,67 | 15,38 | 55,91 | -40,53 | AVERAGE |
| 0,31 | 10,78 | 0,10 | 9,67 | 20,55 | 59,93 | -39,38 | QP |
| 0,31 | 1,85 | 0,10 | 9,67 | 11,62 | 49,93 | -38,31 | AVERAGE |
| 1,84 | 9,84 | 0,10 | 9,69 | 19,63 | 56,00 | -36,37 | QP |
| 1,84 | 3,17 | 0,10 | 9,69 | 12,96 | 46,00 | -33,04 | AVERAGE |
| 2,99 | 6,05 | 0,20 | 9,69 | 15,94 | 46,00 | -30,06 | AVERAGE |
| 2,99 | 10,24 | 0,20 | 9,69 | 20,13 | 56,00 | -35,87 | QP |
| 3,99 | 12,08 | 0,20 | 9,70 | 21,98 | 56,00 | -34,02 | QP |
| 3,99 | 7,41 | 0,20 | 9,70 | 17,31 | 46,00 | -28,69 | AVERAGE |
| 5,62 | 15,68 | 0,20 | 9,73 | 25,61 | 60,00 | -34,39 | QP |
| 5,62 | 11,86 | 0,20 | 9,73 | 21,79 | 50,00 | -28,21 | AVERAGE |



Unless otherwise agreed in writing, this document is issued by the Company subject to its General Conditions of Service printed overleaf, available on request or accessible at <http://www.sgs.com/en/Terms-and-Conditions.aspx> and, for electronic format documents, subject to Terms and Conditions for Electronic Documents at <http://www.sgs.com/en/Terms-and-Conditions/Terms-e-Document.aspx>. Attention is drawn to the limitation of liability, indemnification and jurisdiction issues defined therein. Any holder of this document is advised that information contained hereon reflects the Company's findings at the time of its intervention only and within the limits of Client's instructions, if any. The Company's sole responsibility is to its Client and this document does not exonerate parties to a transaction from exercising all their rights and obligations under the transaction documents. This document cannot be reproduced except in full, without prior written approval of the Company. Any unauthorized alteration, forgery or falsification of the content or appearance of this document is unlawful and offenders may be prosecuted to the fullest extent of the law. Unless otherwise stated the results shown in this test report refer only to the sample(s) tested and such sample(s) are retained for 30 days only.

Mode:b; Line:Neutral Line



Pol : NEUTRAL
No :
Model :

| Frequency MHz | read level dBuV | Cable Loss dB | LISN Factor dB | Measured level dBuV | Limit Line dBuV | Over limit dB | Remark |
|------------------|-----------------------|---------------------|----------------------|---------------------------|-----------------------|---------------------|---------|
| 0,15 | 23,10 | 0,10 | 9,58 | 32,78 | 65,78 | -33,00 | QP |
| 0,15 | 6,82 | 0,10 | 9,58 | 16,50 | 55,78 | -39,28 | AVERAGE |
| 0,17 | 17,12 | 0,10 | 9,60 | 26,82 | 64,90 | -38,08 | QP |
| 0,17 | 6,98 | 0,10 | 9,60 | 16,68 | 54,90 | -38,22 | AVERAGE |
| 0,43 | 14,28 | 0,10 | 9,59 | 23,97 | 57,20 | -33,23 | QP |
| 0,43 | 11,49 | 0,10 | 9,59 | 21,18 | 47,20 | -26,02 | AVERAGE |
| 1,25 | 10,52 | 0,10 | 9,61 | 20,23 | 56,00 | -35,77 | QP |
| 1,25 | 3,36 | 0,10 | 9,61 | 13,07 | 46,00 | -32,93 | AVERAGE |
| 4,38 | 20,10 | 0,20 | 9,64 | 29,94 | 56,00 | -26,06 | QP |
| 4,38 | 15,35 | 0,20 | 9,64 | 25,19 | 46,00 | -20,81 | AVERAGE |
| 5,84 | 19,38 | 0,20 | 9,67 | 29,25 | 60,00 | -30,75 | QP |
| 5,84 | 13,18 | 0,20 | 9,67 | 23,05 | 50,00 | -26,95 | AVERAGE |



Unless otherwise agreed in writing, this document is issued by the Company subject to its General Conditions of Service printed overleaf, available on request or accessible at <http://www.sgs.com/en/Terms-and-Conditions.aspx> and, for electronic format documents, subject to Terms and Conditions for Electronic Documents at <http://www.sgs.com/en/Terms-and-Conditions/Terms-e-Documents.aspx>. Attention is drawn to the limitation of liability, indemnification and jurisdiction issues defined therein. Any holder of this document is advised that information contained hereon reflects the Company's findings at the time of its intervention only and within the limits of Client's instructions, if any. The Company's sole responsibility is to its Client and this document does not exonerate parties to a transaction from exercising all their rights and obligations under the transaction documents. This document cannot be reproduced except in full, without prior written approval of the Company. Any unauthorized alteration, forgery or falsification of the content or appearance of this document is unlawful and offenders may be prosecuted to the fullest extent of the law. Unless otherwise stated the results shown in this test report refer only to the sample(s) tested and such sample(s) are retained for 30 days only.

6.2 Radiated Spurious Emissions

Test Requirement 47 CFR Part 15, Subpart C 15.209 & 15.247(d)

Test Method: ANSI C63.10 (2013) Section 6.4,6.5,6.6

Measurement Distance: 3m

Limit:

| Frequency(MHz) | Field strength (microvolts/meter) | Measurement distance (meters) |
|----------------|-----------------------------------|-------------------------------|
| 0.009-0.490 | 2400/F(kHz) | 300 |
| 0.490-1.705 | 24000/F(kHz) | 30 |
| 1.705-30.0 | 30 | 30 |
| 30-88 | 100 | 3 |
| 88-216 | 150 | 3 |
| 216-960 | 200 | 3 |
| Above 960 | 500 | 3 |

Remark: The emission limits shown in the above table are based on measurements employing a CISPR quasi-peak detector except for the frequency bands 9-90kHz, 110-490kHz and above 1000 MHz. Radiated emission limits in these three bands are based on measurements employing an average detector, the peak field strength of any emission shall not exceed the maximum permitted average limits specified above by more than 20 dB under any condition of modulation.



Unless otherwise agreed in writing, this document is issued by the Company subject to its General Conditions of Service printed overleaf, available on request or accessible at <http://www.sgs.com/en/Terms-and-Conditions.aspx> and, for electronic format documents, subject to Terms and Conditions for Electronic Documents at <http://www.sgs.com/en/Terms-and-Conditions/Terms-e-Documents.aspx>. Attention is drawn to the limitation of liability, indemnification and jurisdiction issues defined therein. Any holder of this document is advised that information contained hereon reflects the Company's findings at the time of its intervention only and within the limits of Client's instructions, if any. The Company's sole responsibility is to its Client and this document does not exonerate parties to a transaction from exercising all their rights and obligations under the transaction documents. This document cannot be reproduced except in full, without prior written approval of the Company. Any unauthorized alteration, forgery or falsification of the content or appearance of this document is unlawful and offenders may be prosecuted to the fullest extent of the law. Unless otherwise stated the results shown in this test report refer only to the sample(s) tested and such sample(s) are retained for 30 days only.

6.2.1 E.U.T. Operation

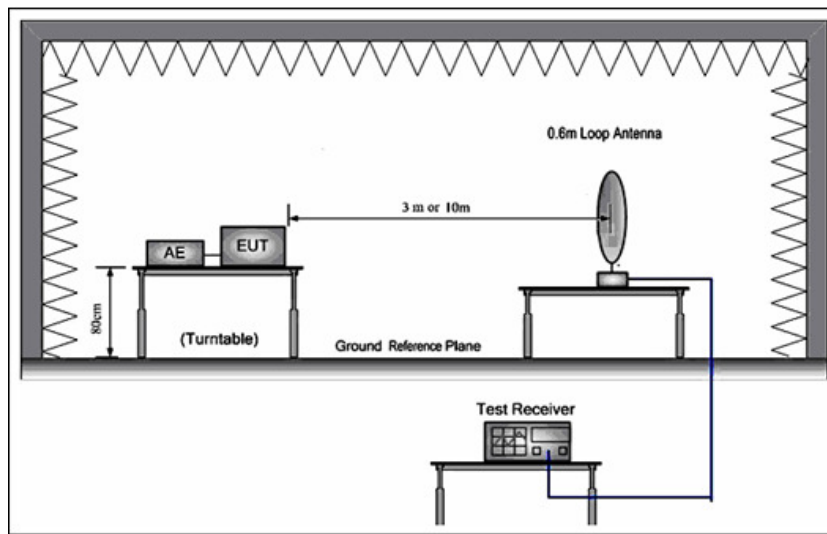
Operating Environment:

Temperature: 26.3 °C Humidity: 52.9 % RH Atmospheric Pressure: 1020 mbar

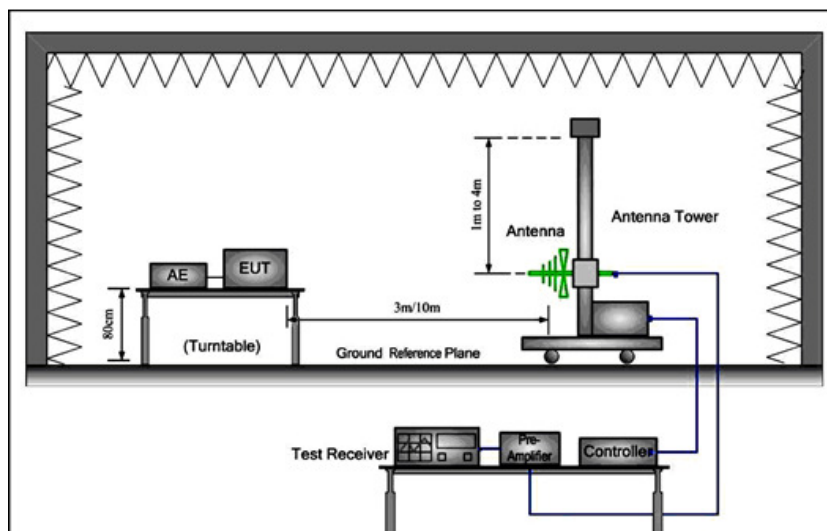
Test mode d: Tx mode_Keep the EUT in continuously transmitting mode with all modulation types. All data rates for each modulation type have been tested and found the data rate @ 1Mbps is the worst case of IEEE 802.11b; data raate @ 6Mbps is the worst case of IEEE 802.11g; data rata @ 6.5Mbps is the worst case of IEEE 802.11n(HT20); data rate @13.5Mbps is the worst case of IEEE 802.11n(HT40). Only the data of worst case is recorded in the report.

6.2.2 Test Setup Diagram

9kHz to 30MHz

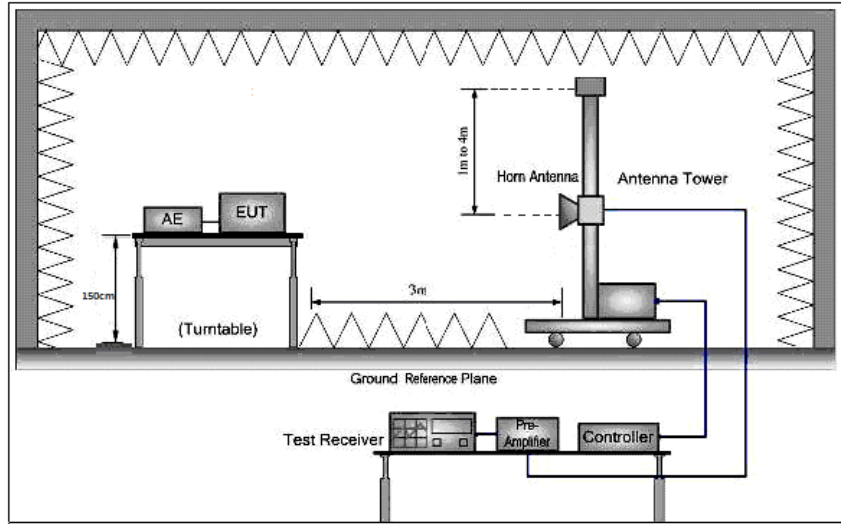


30MHz to 1GHz



Unless otherwise agreed in writing, this document is issued by the Company subject to its General Conditions of Service printed overleaf, available on request or accessible at <http://www.sgs.com/en/Terms-and-Conditions.aspx> and, for electronic format documents, subject to Terms and Conditions for Electronic Documents at <http://www.sgs.com/en/Terms-and-Conditions/Terms-e-Document.aspx>. Attention is drawn to the limitation of liability, indemnification and jurisdiction issues defined therein. Any holder of this document is advised that information contained hereon reflects the Company's findings at the time of its intervention only and within the limits of Client's instructions, if any. The Company's sole responsibility is to its Client and this document does not exonerate parties to a transaction from exercising all their rights and obligations under the transaction documents. This document cannot be reproduced except in full, without prior written approval of the Company. Any unauthorized alteration, forgery or falsification of the content or appearance of this document is unlawful and offenders may be prosecuted to the fullest extent of the law. Unless otherwise stated the results shown in this test report refer only to the sample(s) tested and such sample(s) are retained for 30 days only.

Above 1GHz



Unless otherwise agreed in writing, this document is issued by the Company subject to its General Conditions of Service printed overleaf, available on request or accessible at <http://www.sgs.com/en/Terms-and-Conditions.aspx> and, for electronic format documents, subject to Terms and Conditions for Electronic Documents at <http://www.sgs.com/en/Terms-and-Conditions/Terms-e-Document.aspx>. Attention is drawn to the limitation of liability, indemnification and jurisdiction issues defined therein. Any holder of this document is advised that information contained hereon reflects the Company's findings at the time of its intervention only and within the limits of Client's instructions, if any. The Company's sole responsibility is to its Client and this document does not exonerate parties to a transaction from exercising all their rights and obligations under the transaction documents. This document cannot be reproduced except in full, without prior written approval of the Company. Any unauthorized alteration, forgery or falsification of the content or appearance of this document is unlawful and offenders may be prosecuted to the fullest extent of the law. Unless otherwise stated the results shown in this test report refer only to the sample(s) tested and such sample(s) are retained for 30 days only.

Attention: To check the authenticity of testing /inspection report & certificate, please contact us at telephone: (86-755) 8307 1443, or email: CN.Doccheck@sgs.com
 No.198 Kezhu Road, Scientech Park, Guangzhou Economic & Technology Development District, Guangzhou, China 510663 t (86-20) 82155555 f (86-20) 82075058 www.sgs.com.cn
 中国·广州·经济技术开发区科学城科珠路198号 邮编: 510663 t (86-20) 82155555 f (86-20) 82075058 sgs.china@sgs.com

6.2.3 Measurement Procedure and Data

- a. For below 1GHz, the EUT was placed on the top of a rotating table 0.8 meters above the ground at a 3 or 10 meter semi-anechoic chamber. The table was rotated 360 degrees to determine the position of the highest radiation.
- b. For above 1GHz, the EUT was placed on the top of a rotating table 1.5 meters above the ground at a 3 meter fully-anechoic chamber. The table was rotated 360 degrees to determine the position of the highest radiation.
- c. The EUT was set 3 or 10 meters away from the interference-receiving antenna, which was mounted on the top of a variable-height antenna tower.
- d. The antenna height is varied from one meter to four meters above the ground to determine the maximum value of the field strength. Both horizontal and vertical polarizations of the antenna are set to make the measurement.
- e. For each suspected emission, the EUT was arranged to its worst case and then the antenna was tuned to heights from 1 meter to 4 meters (for the test frequency of below 30MHz, the antenna was tuned to heights 1 meter) and the rotatable table was turned from 0 degrees to 360 degrees to find the maximum reading.
- f. The test-receiver system was set to Peak Detect Function and Specified Bandwidth with Maximum Hold Mode.
- g. If the emission level of the EUT in peak mode was 10dB lower than the limit specified, then testing could be stopped and the peak values of the EUT would be reported. Otherwise the emissions that did not have 10dB margin would be re-tested one by one using peak, quasi-peak or average method as specified and then reported in a data sheet.
- h. Test the EUT in the lowest channel, the middle channel, the Highest channel.
- i. The radiation measurements are performed in X, Y, Z axis positioning for Transmitting mode, and found the X axis positioning which it is the worst case.
- j. Repeat above procedures until all frequencies measured was complete.

Remark:

- 1) For emission below 1GHz, through pre-scan found the worst case is the lowest channel. Only the worst case is recorded in the report.
- 2) The field strength is calculated by adding the Antenna Factor, Cable Factor & Preamplifier. The basic equation with a sample calculation is as follows:
 Final Test Level = Receiver Reading + Antenna Factor + Cable Factor – Preamplifier Factor
- 3) Scan from 9kHz to 25GHz, the disturbance above 18GHz and below 30MHz was very low. The points marked on above plots are the highest emissions could be found when testing, so only above points had been displayed. The amplitude of spurious emissions from the radiator which are attenuated more than 20dB below the limit need not be reported.
- 4) For frequencies above 1GHz, the field strength limits are based on average limits. However, the peak field strength of any emission shall not exceed the maximum permitted average limits specified above by more than 20 dB under any condition of modulation. For the emissions whose peak level is lower than the average limit, only the peak measurement is shown



Mode:d; Polarization:Horizontal; Modulation:b; bandwidth:20MHz; Channel:Low

| | Freq | ReadAntenna Level | Antenna Factor | Cable Loss | Preamp Factor | Level | Limit Line | Over Limit | Pol/Phase | Remark |
|---|---------|-------------------|----------------|------------|---------------|--------|------------|------------|------------|--------|
| | MHz | dBuV | dB/m | dB | dB | dBuV/m | dBuV/m | dB | | |
| 1 | 32.520 | 20.90 | 12.27 | 0.14 | 29.80 | 3.51 | 40.00 | -36.49 | HORIZONTAL | QP |
| 2 | 61.132 | 22.60 | 12.10 | 0.59 | 29.47 | 5.82 | 40.00 | -34.18 | HORIZONTAL | QP |
| 3 | 144.335 | 26.16 | 13.15 | 1.09 | 29.40 | 11.00 | 43.50 | -32.50 | HORIZONTAL | QP |
| 4 | 528.246 | 28.99 | 18.75 | 2.27 | 29.58 | 20.43 | 46.00 | -25.57 | HORIZONTAL | QP |
| 5 | 687.151 | 27.97 | 21.34 | 2.23 | 29.46 | 22.08 | 46.00 | -23.92 | HORIZONTAL | QP |
| 6 | 807.429 | 28.42 | 22.78 | 2.76 | 29.37 | 24.59 | 46.00 | -21.41 | HORIZONTAL | QP |

Mode:d; Polarization:Horizontal; Modulation:b; bandwidth:20MHz; Channel:Low

| | Freq | ReadAntenna Level | Antenna Factor | Cable Loss | Preamp Factor | Level | Limit Line | Over Limit | Pol/Phase | Remark |
|----|-----------|-------------------|----------------|------------|---------------|--------|------------|------------|------------|---------|
| | MHz | dBuV | dB/m | dB | dB | dBuV/m | dBuV/m | dB | | |
| 1 | 4824.016 | 48.14 | 30.82 | 6.01 | 36.94 | 48.03 | 54.00 | -5.97 | HORIZONTAL | Average |
| 2 | 4824.016 | 52.69 | 30.82 | 6.01 | 36.94 | 52.58 | 74.00 | -21.42 | HORIZONTAL | Peak |
| 3 | 6249.464 | 32.63 | 33.30 | 6.94 | 36.99 | 35.88 | 54.00 | -18.12 | HORIZONTAL | Average |
| 4 | 6249.464 | 45.13 | 33.30 | 6.94 | 36.99 | 48.38 | 74.00 | -25.62 | HORIZONTAL | Peak |
| 5 | 7236.052 | 33.38 | 35.55 | 7.35 | 36.93 | 39.35 | 54.00 | -14.65 | HORIZONTAL | Average |
| 6 | 7236.052 | 45.05 | 35.55 | 7.35 | 36.93 | 51.02 | 74.00 | -22.98 | HORIZONTAL | Peak |
| 7 | 8738.852 | 31.67 | 36.30 | 7.98 | 36.96 | 38.99 | 54.00 | -15.01 | HORIZONTAL | Average |
| 8 | 8738.852 | 45.90 | 36.30 | 7.98 | 36.96 | 53.22 | 74.00 | -20.78 | HORIZONTAL | Peak |
| 9 | 9648.432 | 30.35 | 37.54 | 8.18 | 37.08 | 38.99 | 54.00 | -15.01 | HORIZONTAL | Average |
| 10 | 9648.432 | 44.96 | 37.54 | 8.18 | 37.08 | 53.60 | 74.00 | -20.40 | HORIZONTAL | Peak |
| 11 | 12010.380 | 26.61 | 39.50 | 10.67 | 37.20 | 39.58 | 54.00 | -14.42 | HORIZONTAL | Average |
| 12 | 12010.380 | 41.28 | 39.50 | 10.67 | 37.20 | 54.25 | 74.00 | -19.75 | HORIZONTAL | Peak |



Unless otherwise agreed in writing, this document is issued by the Company subject to its General Conditions of Service printed overleaf, available on request or accessible at <http://www.sgs.com/en/Terms-and-Conditions.aspx> and, for electronic format documents, subject to Terms and Conditions for Electronic Documents at <http://www.sgs.com/en/Terms-and-Conditions/Terms-e-Documents.aspx>. Attention is drawn to the limitation of liability, indemnification and jurisdiction issues defined therein. Any holder of this document is advised that information contained hereon reflects the Company's findings at the time of its intervention only and within the limits of Client's instructions, if any. The Company's sole responsibility is to its Client and this document does not exonerate parties to a transaction from exercising all their rights and obligations under the transaction documents. This document cannot be reproduced except in full, without prior written approval of the Company. Any unauthorized alteration, forgery or falsification of the content or appearance of this document is unlawful and offenders may be prosecuted to the fullest extent of the law. Unless otherwise stated the results shown in this test report refer only to the sample(s) tested and such sample(s) are retained for 30 days only.

Mode:d; Polarization:Vertical; Modulation:b; bandwidth:20MHz; Channel:Low

| | Freq | ReadAntenna Level | Antenna Factor | Cable Loss | Preamp Factor | Level | Limit Line | Over Limit | Pol/Phase | Remark |
|---|---------|----------------------|-------------------|---------------|------------------|--------|---------------|---------------|-----------|--------|
| | MHz | dBuV | dB/m | dB | dB | dBuV/m | dBuV/m | dB | | |
| 1 | 42.302 | 21.37 | 12.67 | 0.66 | 29.55 | 5.15 | 40.00 | -34.85 | VERTICAL | QP |
| 2 | 56.197 | 23.44 | 12.43 | 0.59 | 29.49 | 6.97 | 40.00 | -33.03 | VERTICAL | QP |
| 3 | 119.018 | 26.65 | 11.46 | 0.92 | 29.40 | 9.63 | 43.50 | -33.87 | VERTICAL | QP |
| 4 | 139.851 | 26.19 | 13.10 | 1.03 | 29.40 | 10.92 | 43.50 | -32.58 | VERTICAL | QP |
| 5 | 605.659 | 28.33 | 20.63 | 2.10 | 29.50 | 21.56 | 46.00 | -24.44 | VERTICAL | QP |
| 6 | 801.786 | 28.23 | 22.72 | 2.77 | 29.40 | 24.32 | 46.00 | -21.68 | VERTICAL | QP |

Mode:d; Polarization:Vertical; Modulation:b; bandwidth:20MHz; Channel:Low

| | Freq | ReadAntenna Level | Antenna Factor | Cable Loss | Preamp Factor | Level | Limit Line | Over Limit | Pol/Phase | Remark |
|----|-----------|----------------------|-------------------|---------------|------------------|--------|---------------|---------------|-----------|---------|
| | MHz | dBuV | dB/m | dB | dB | dBuV/m | dBuV/m | dB | | |
| 1 | 4824.948 | 33.99 | 30.82 | 6.01 | 36.94 | 33.88 | 54.00 | -20.12 | VERTICAL | Average |
| 2 | 4824.948 | 45.92 | 30.82 | 6.01 | 36.94 | 45.81 | 74.00 | -28.19 | VERTICAL | Peak |
| 3 | 6322.136 | 31.33 | 33.68 | 6.97 | 36.99 | 34.99 | 54.00 | -19.01 | VERTICAL | Average |
| 4 | 6322.136 | 44.61 | 33.68 | 6.97 | 36.99 | 48.27 | 74.00 | -25.73 | VERTICAL | Peak |
| 5 | 7236.122 | 30.92 | 35.55 | 7.35 | 36.93 | 36.89 | 54.00 | -17.11 | VERTICAL | Average |
| 6 | 7236.122 | 44.64 | 35.55 | 7.35 | 36.93 | 50.61 | 74.00 | -23.39 | VERTICAL | Peak |
| 7 | 8764.146 | 31.94 | 36.33 | 8.00 | 36.97 | 39.30 | 54.00 | -14.70 | VERTICAL | Average |
| 8 | 8764.146 | 44.85 | 36.33 | 8.00 | 36.97 | 52.21 | 74.00 | -21.79 | VERTICAL | Peak |
| 9 | 9648.430 | 30.23 | 37.54 | 8.18 | 37.08 | 38.87 | 54.00 | -15.13 | VERTICAL | Average |
| 10 | 9648.430 | 45.44 | 37.54 | 8.18 | 37.08 | 54.08 | 74.00 | -19.92 | VERTICAL | Peak |
| 11 | 12060.250 | 26.66 | 39.46 | 10.71 | 37.17 | 39.66 | 54.00 | -14.34 | VERTICAL | Average |
| 12 | 12060.250 | 43.70 | 39.46 | 10.71 | 37.17 | 56.70 | 74.00 | -17.30 | VERTICAL | Peak |

--End of Report--



Unless otherwise agreed in writing, this document is issued by the Company subject to its General Conditions of Service printed overleaf, available on request or accessible at <http://www.sgs.com/en/Terms-and-Conditions.aspx> and, for electronic format documents, subject to Terms and Conditions for Electronic Documents at <http://www.sgs.com/en/Terms-and-Conditions/Terms-e-Document.aspx>. Attention is drawn to the limitation of liability, indemnification and jurisdiction issues defined therein. Any holder of this document is advised that information contained hereon reflects the Company's findings at the time of its intervention only and within the limits of Client's instructions, if any. The Company's sole responsibility is to its Client and this document does not exonerate parties to a transaction from exercising all their rights and obligations under the transaction documents. This document cannot be reproduced except in full, without prior written approval of the Company. Any unauthorized alteration, forgery or falsification of the content or appearance of this document is unlawful and offenders may be prosecuted to the fullest extent of the law. Unless otherwise stated the results shown in this test report refer only to the sample(s) tested and such sample(s) are retained for 30 days only.