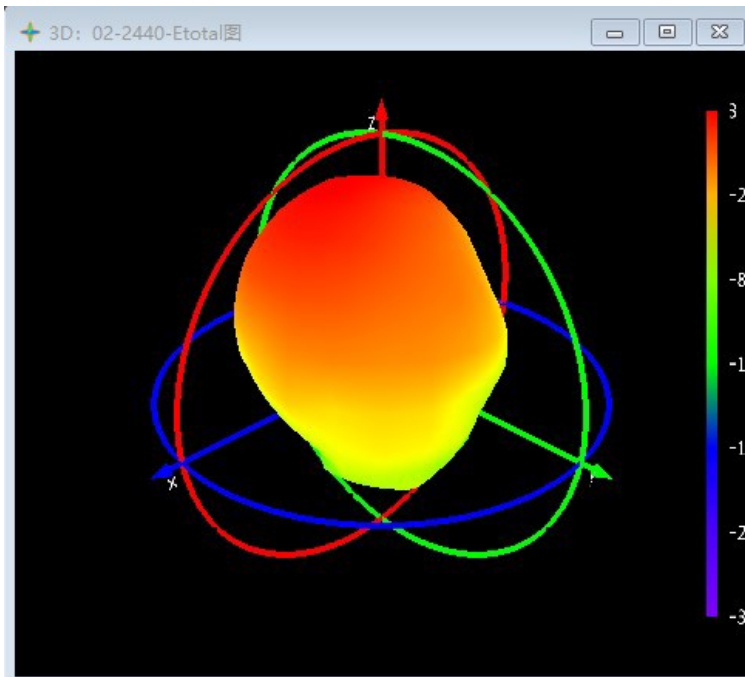
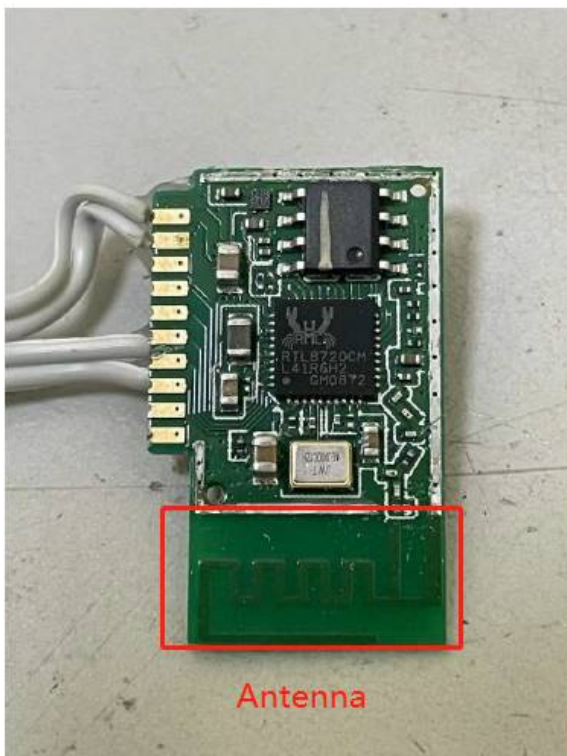


ANTENNA PATTERN



Antenna construction



ANTENNA SPECIFICATIONS

Item	Specifications	
Antenna	Model	Ant_JXC8720-10-V1.1
	Frequency Range	2400~2483.5MHz
	Polarization	Linear
	Peak Gain	BLE: 2.8dBi WIFI: 2.6dBi
	V.S.W.R	< 2.0
	Impedance	50Ω
	Return Loss	-10dB
	Connector	Microstrip line connection
	Efficiency	25% MAX
Environmental	Operating Temperature	-40°C~+105°C

Manufacturer: Shenzhen Jingxun Technology Limited Co.,Ltd

Address: 3/F, A5 Building Zhiyuan Community No.1001, Xueyuan Road, Nanshan District, Shenzhen City, China