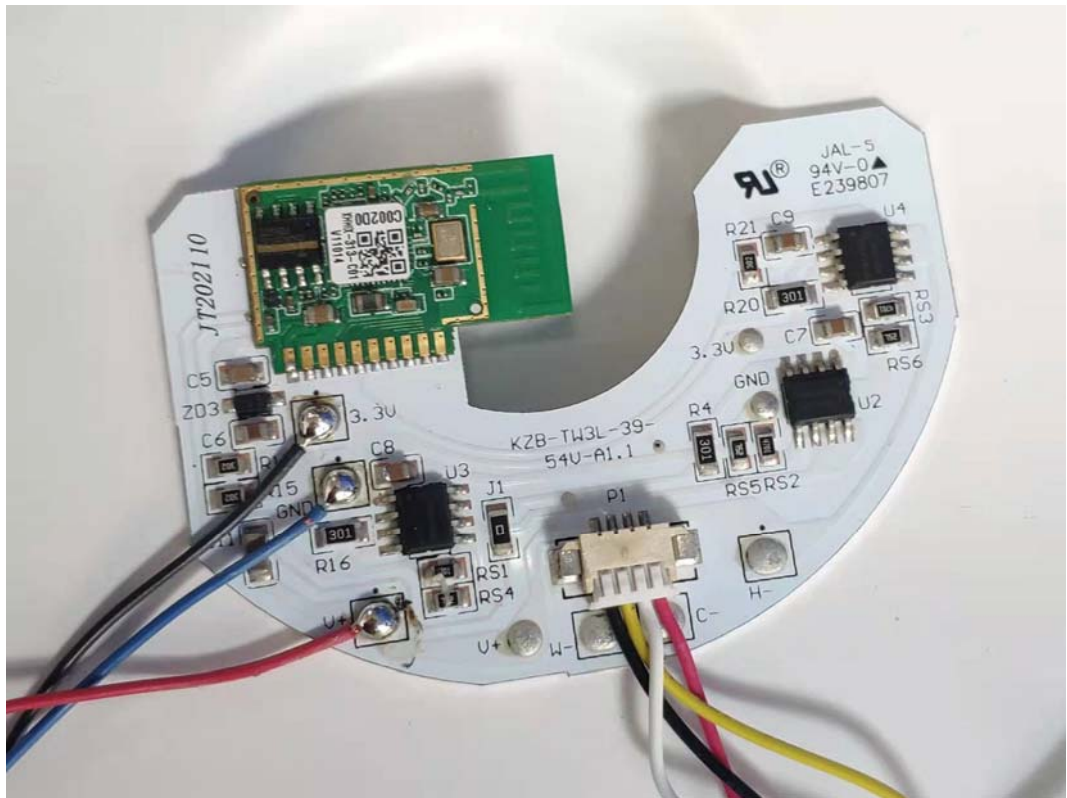


FIGURE 1
CYNC FIXTURE CANLESS (M/N: CFIXCNLR6S1)
COVER REMOVED #1



*FIGURE 2
CYNX FIXTURE CANLESS (M/N: CFIXCNLR6S1)
MAIN BOARD (COMPONENT SIDE)*



*FIGURE 3
CYNX FIXTURE CANLESS (M/N: CFIXCNLR6S1)
MAIN BOARD (SOLDERED SIDE)*

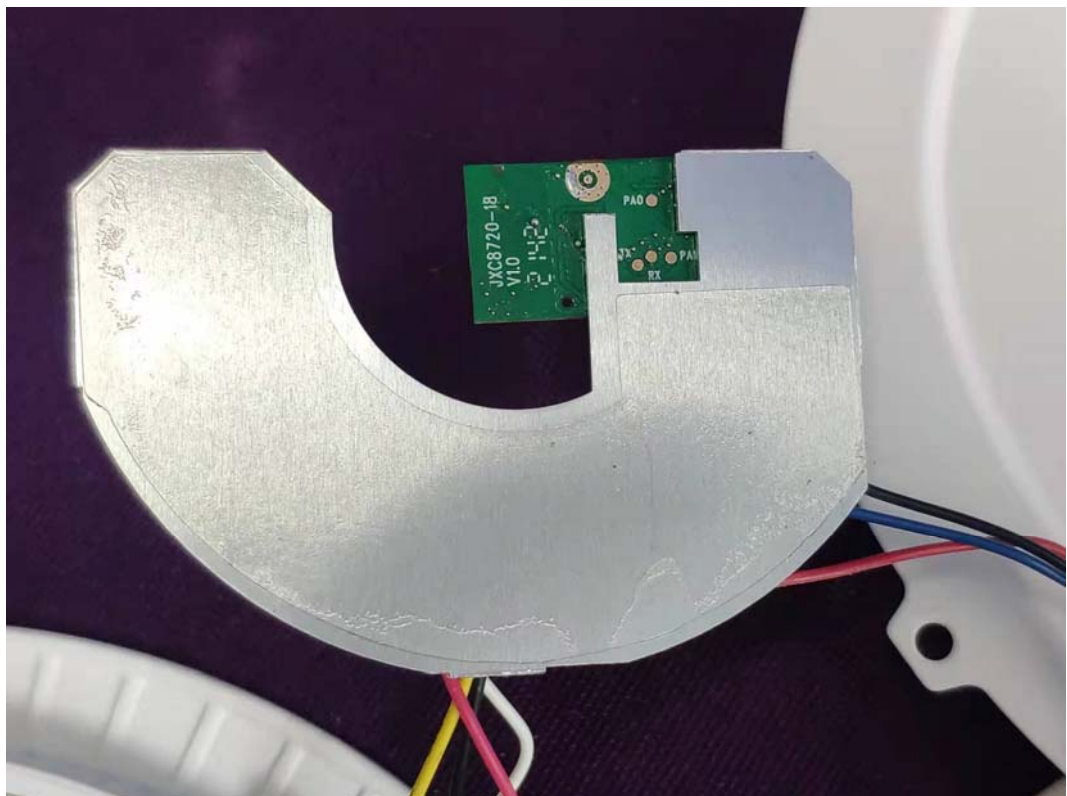


FIGURE 4
CYNC FIXTURE CANLESS (M/N: CFIXCNLR6S1)
CHIP & CRYSTAL ON BOARD

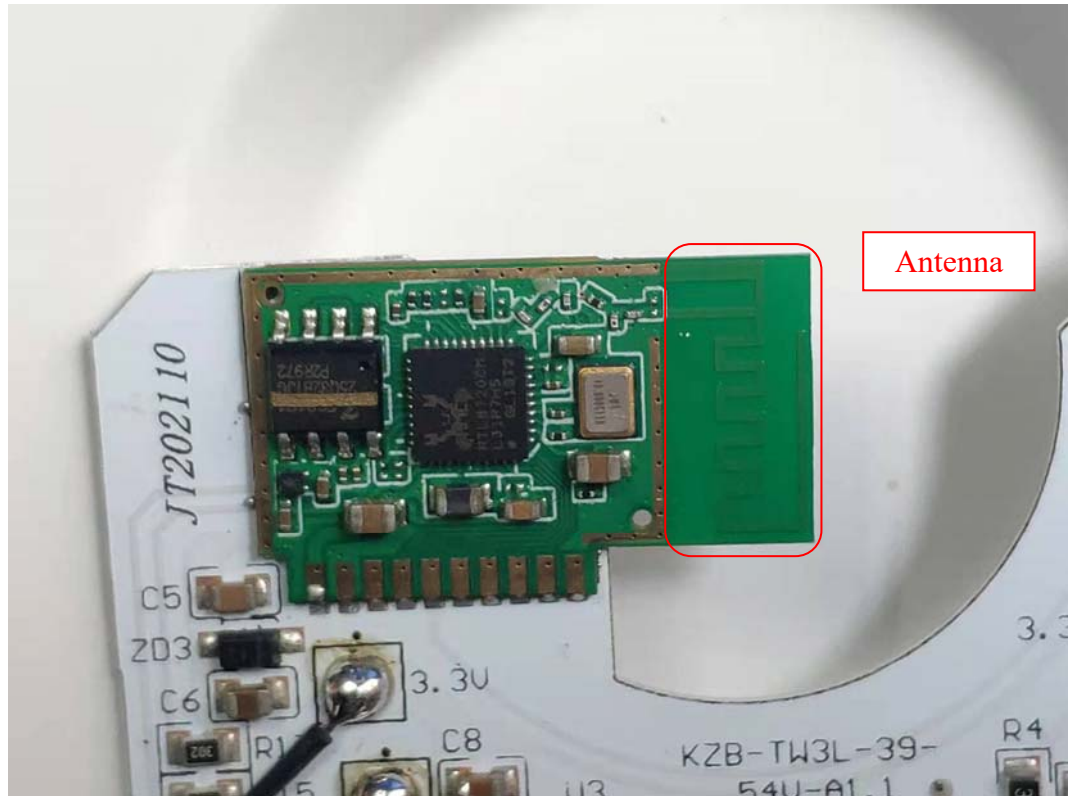


FIGURE 5
CYNC FIXTURE CANLESS (M/N: CFIXCNLR6S1)
POWER BOARD (COMPONENT SIDE)

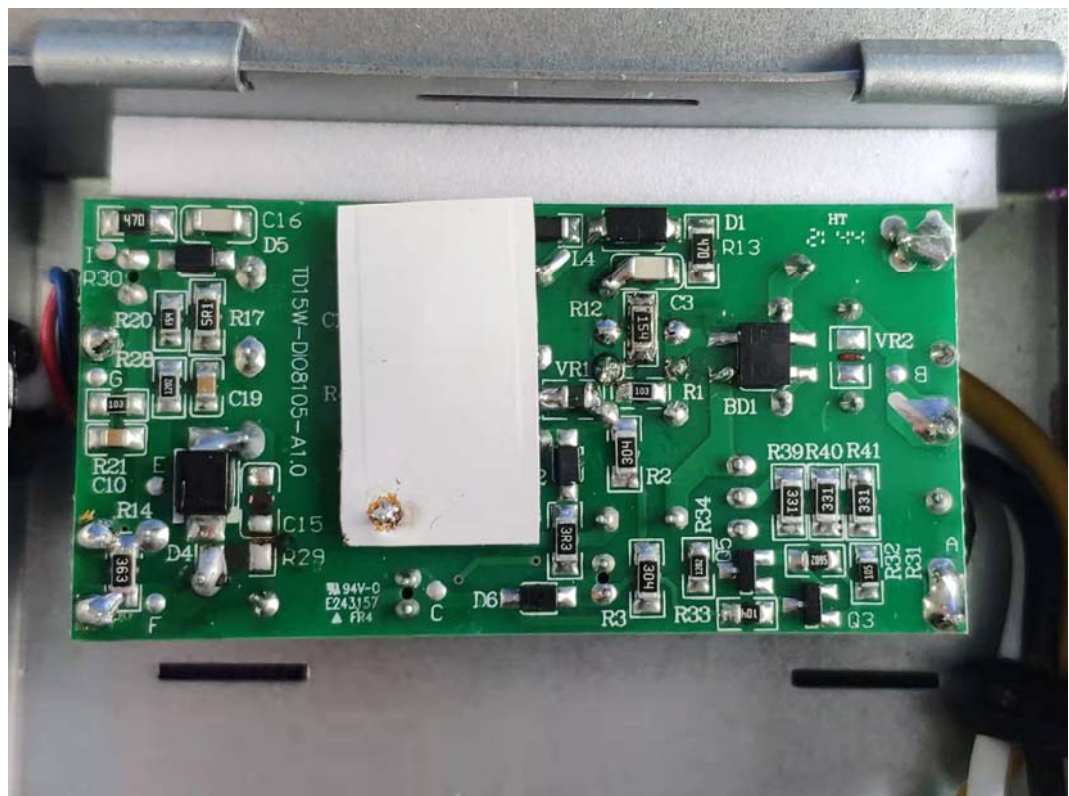


FIGURE 6
CYNX FIXTURE CANLESS (M/N: CFIXCNLR6S1)
POWER BOARD (SOLDERED SIDE)

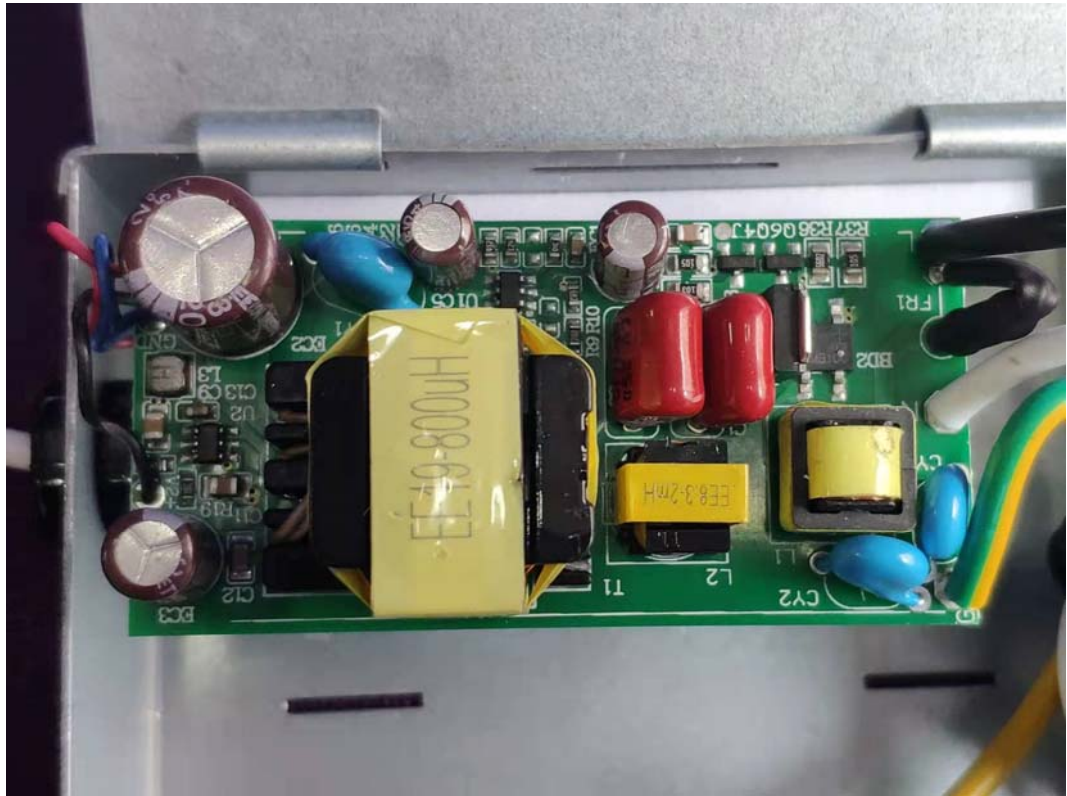


FIGURE 7
CYNX FIXTURE CANLESS (M/N: CFIXCNLR6S1)
COVER REMOVED #2



FIGURE 8
CYNC FIXTURE CANLESS (M/N: CFIXCNLR6S1)
LED

