

FIGURE 3  
DIRECT CONNECT FULL COLOR BR30 (M/N: CLEDR309CD1)  
REMOVE COVER



FIGURE 4  
DIRECT CONNECT FULL COLOR BR30 (M/N: CLEDR309CD1)  
MAIN BOARD FRONT

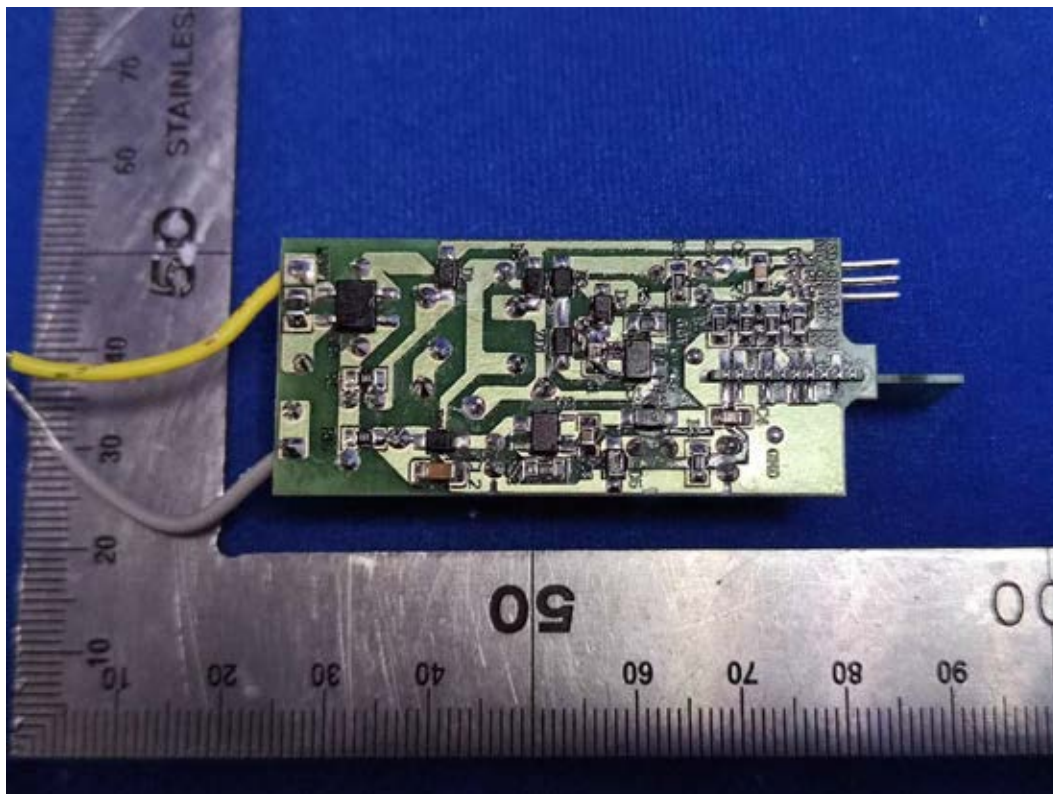


FIGURE 5  
DIRECT CONNECT FULL COLOR BR30 (M/N: CLEDR309CD1)  
MAIN BORAD BACK

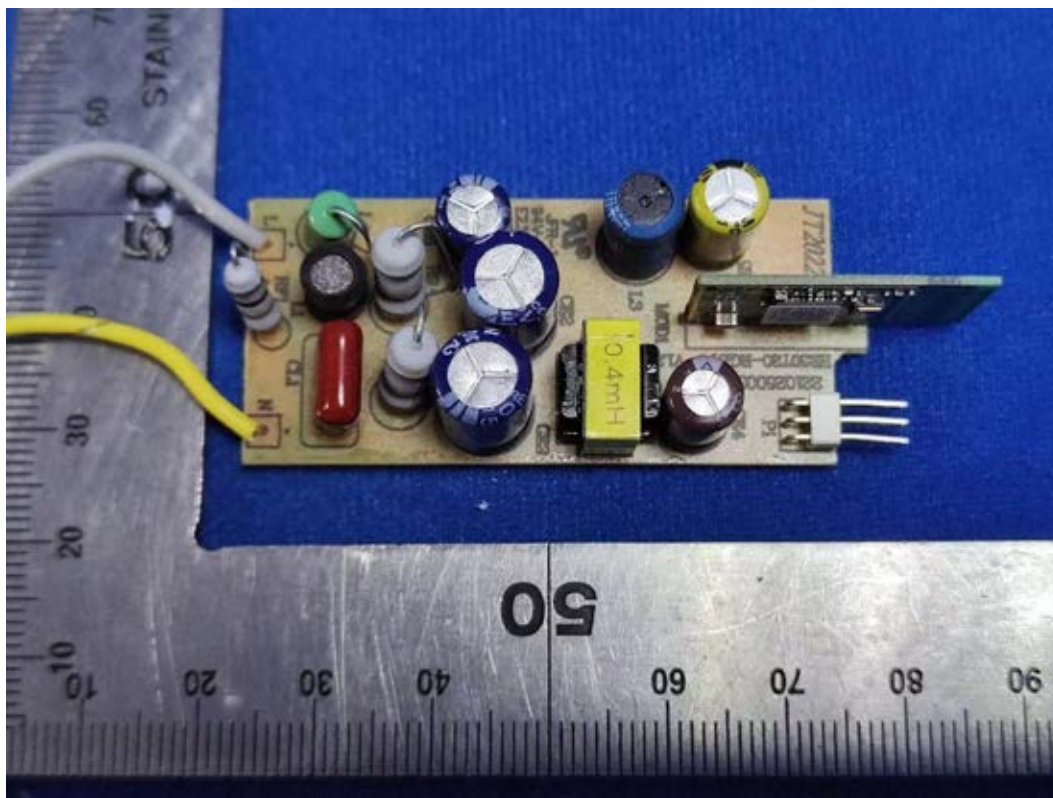


FIGURE 6  
DIRECT CONNECT FULL COLOR BR30 (M/N: CLEDR309CD1)  
RF BORAD FRONT

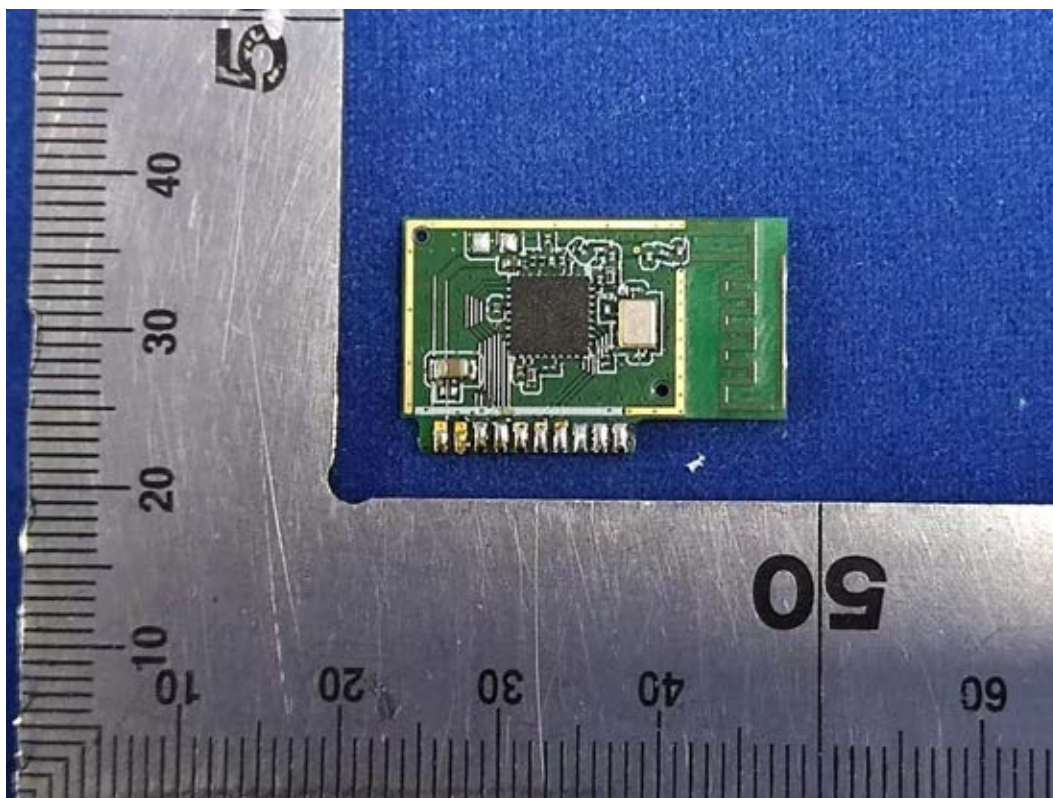




FIGURE 7  
DIRECT CONNECT FULL COLOR BR30 (M/N: CLEDR309CD1)  
RF BORAD BACK

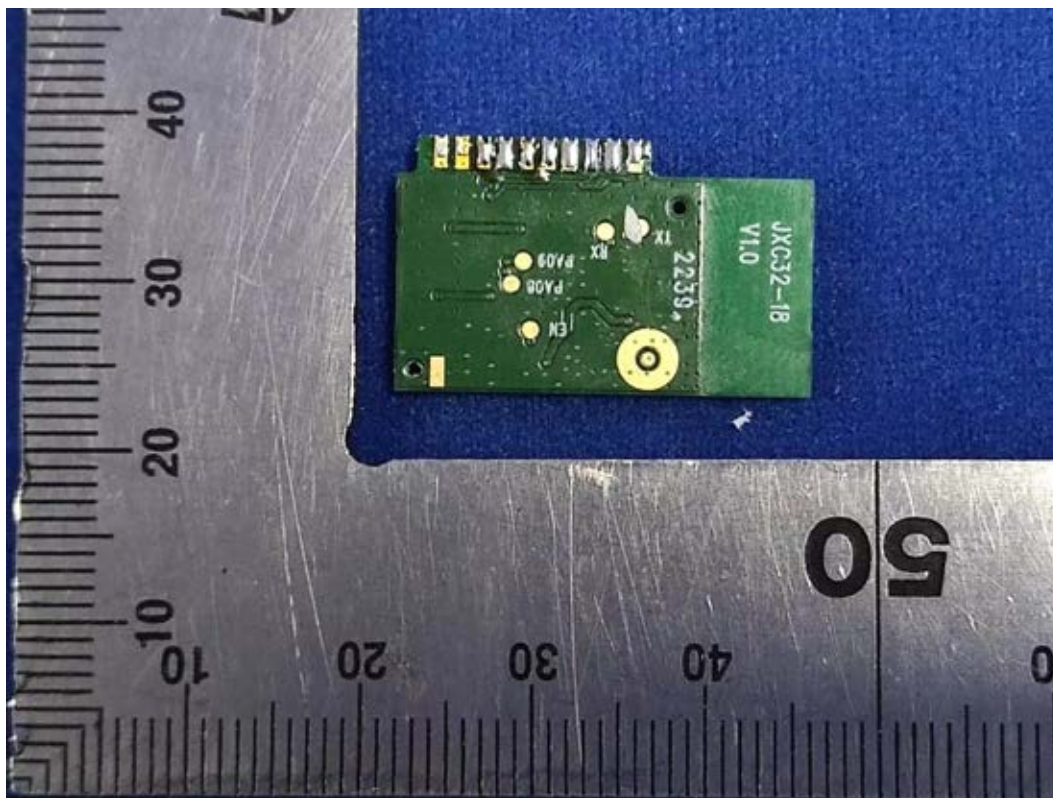


FIGURE 8  
DIRECT CONNECT FULL COLOR BR30 (M/N: CLEDR309CD1)  
CHIP&CRYSTAL ON RBOARD

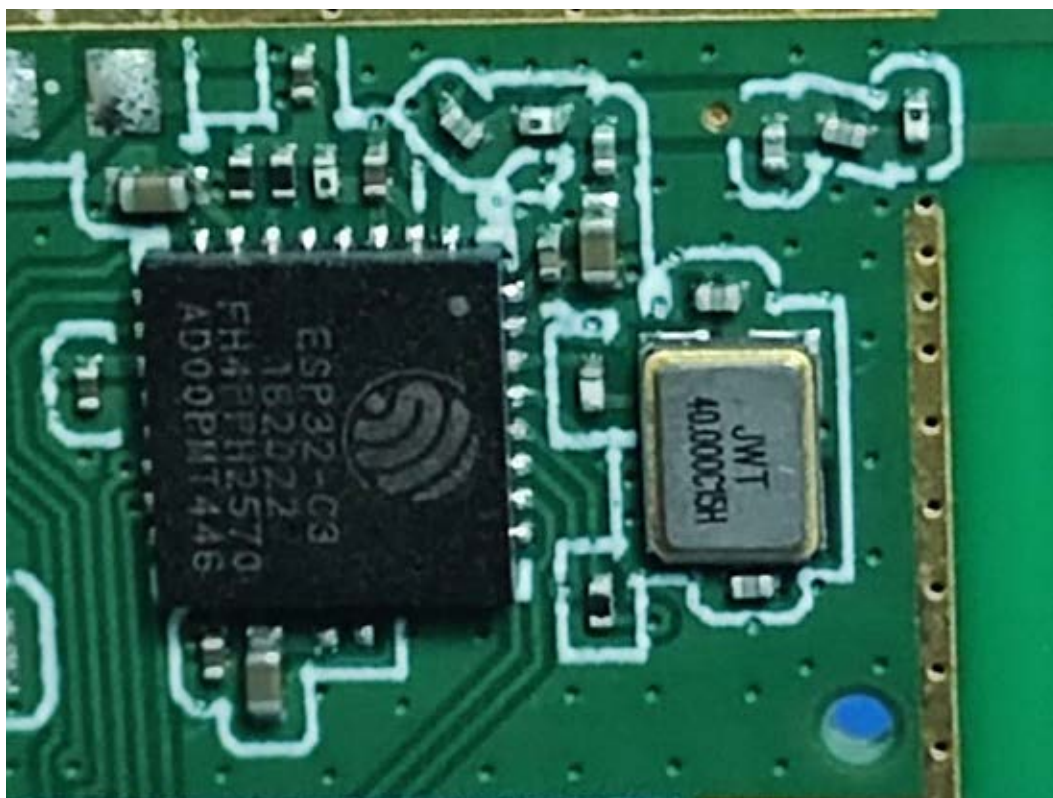


FIGURE 9  
DIRECT CONNECT FULL COLOR BR30 (M/N: CLEDR309CD1)  
LED FRONT

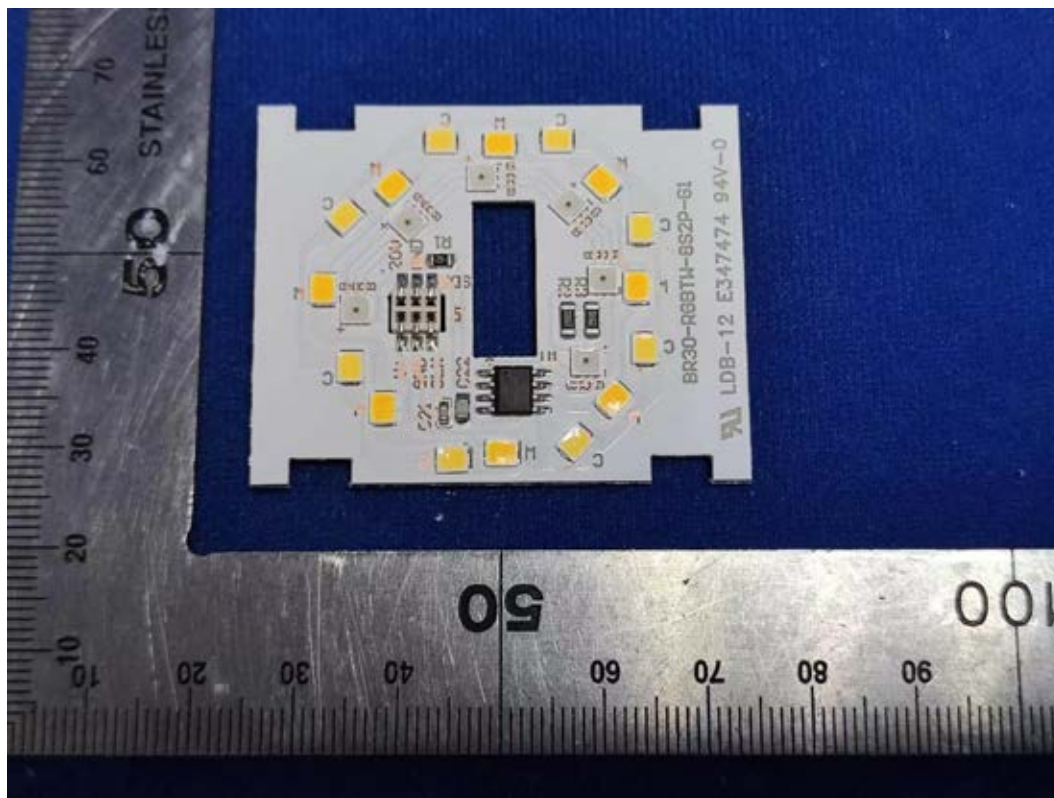


FIGURE 10  
DIRECT CONNECT FULL COLOR BR30 (M/N: CLEDR309CD1)  
LED BACK

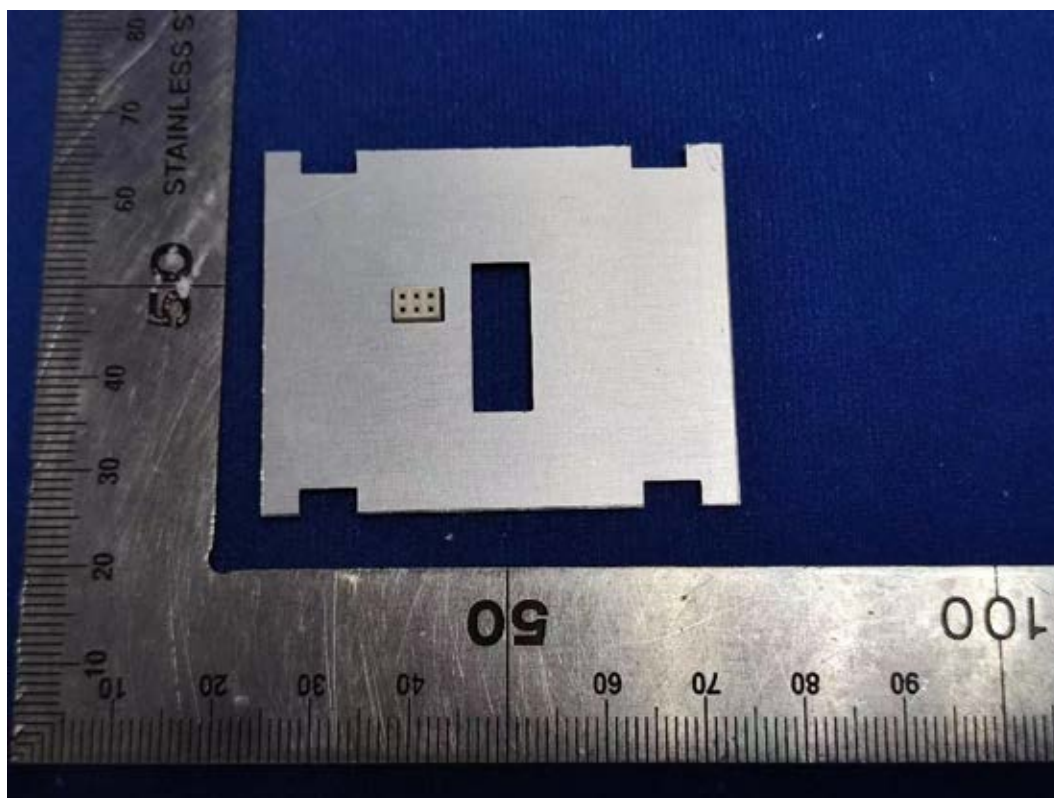


FIGURE 11  
DIRECT CONNECT FULL COLOR BR30 (M/N: CLEDR309CD1)  
ANTENNA

