

FIGURE 2
DIRECT CONNECT FULL COLOR BR30 (M/N: CLEDR309CD1)
REMOVE COVER

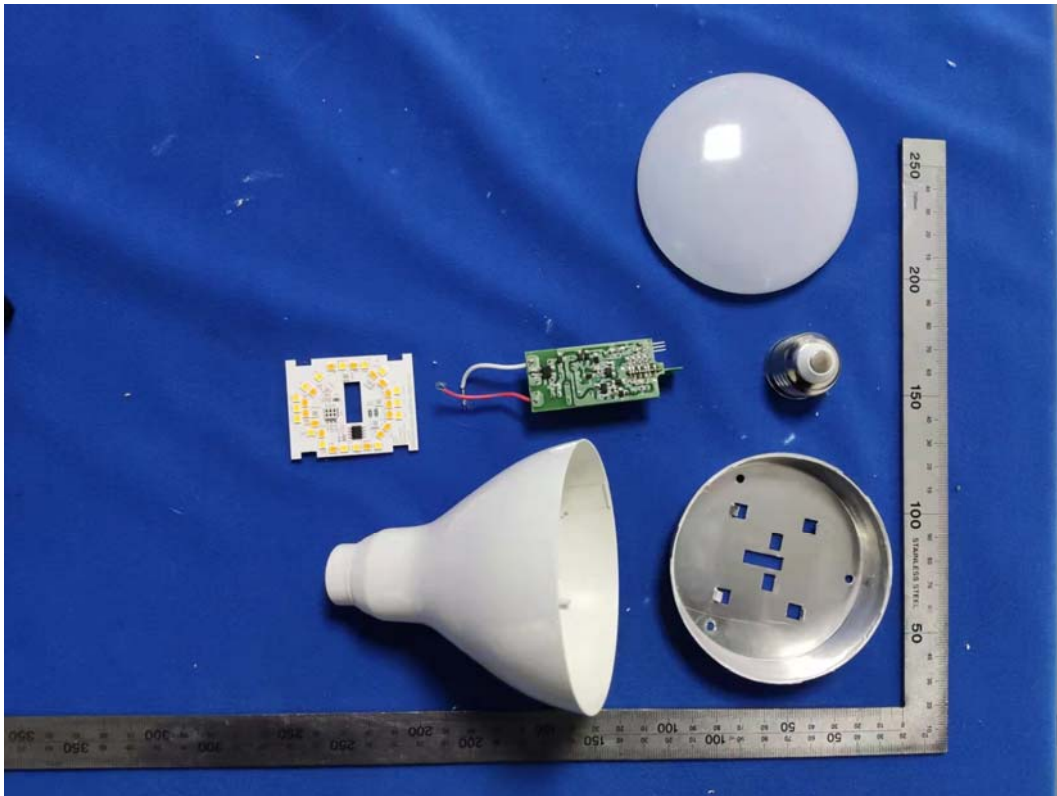


FIGURE 3
DIRECT CONNECT FULL COLOR BR30 (M/N: CLEDR309CD1)
MAIN BORAD FRONT

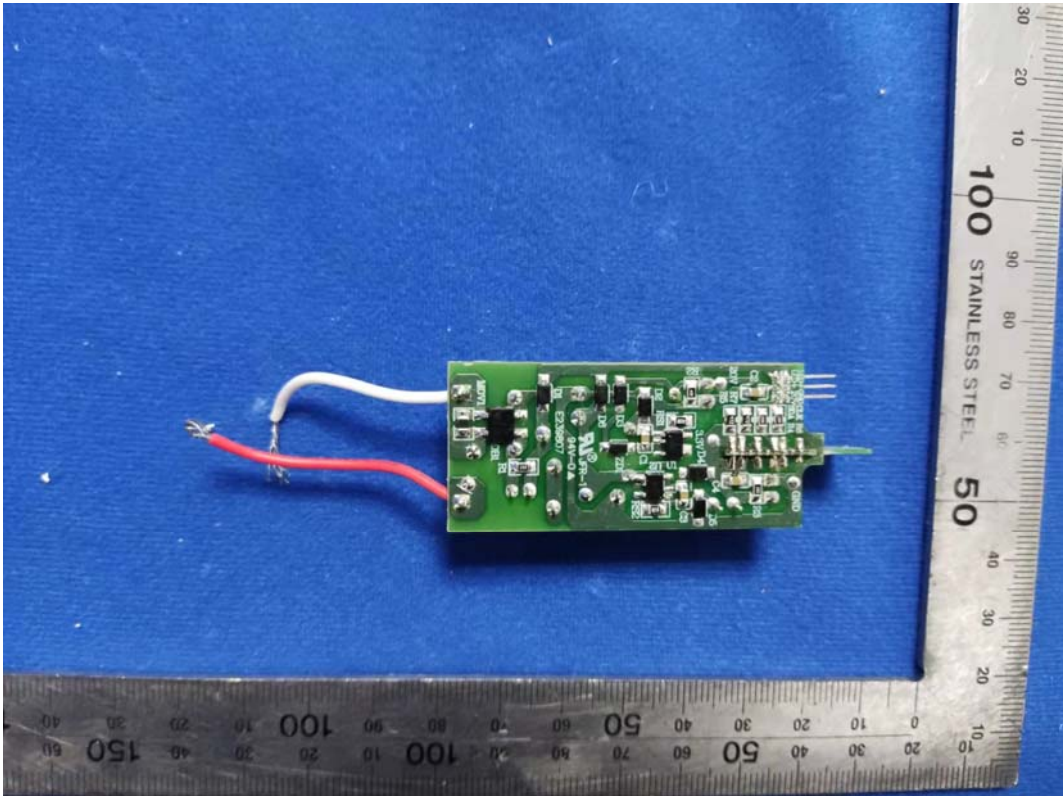
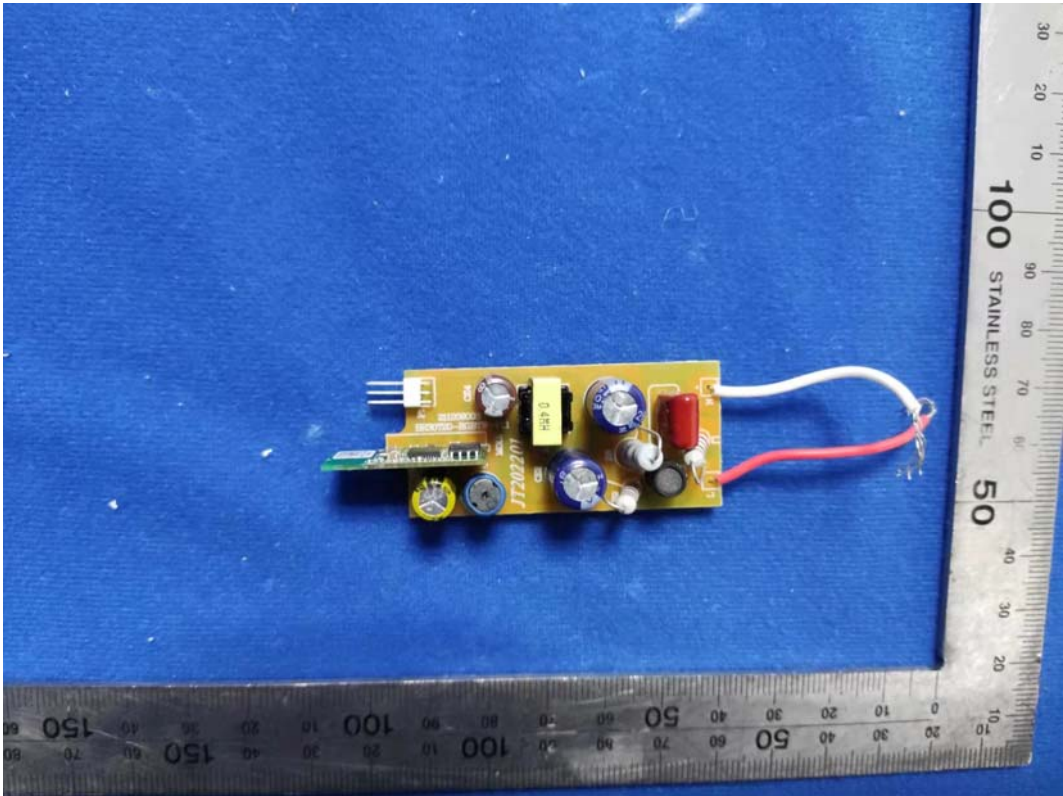
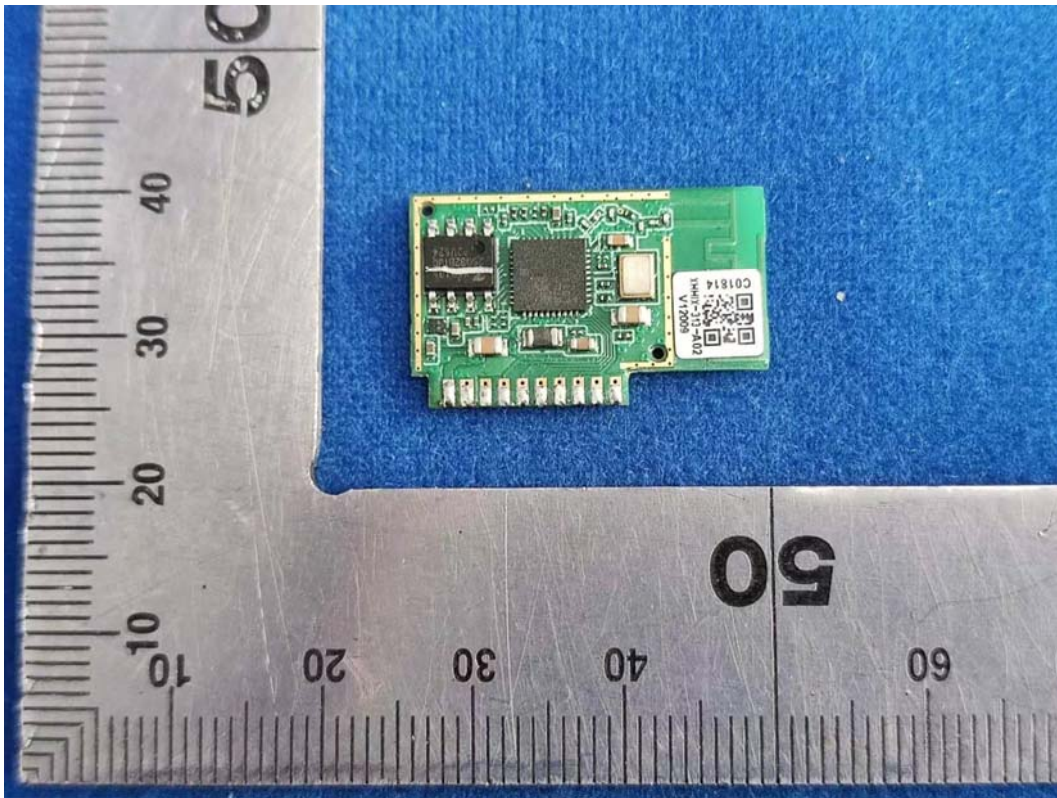


FIGURE 4
DIRECT CONNECT FULL COLOR BR30 (M/N: CLEDR309CD1)
MAIN BORAD BACK



*FIGURE 5
DIRECT CONNECT FULL COLOR BR30 (M/N: CLEDR309CD1)
RF BORAD FRONT*



*FIGURE 6
DIRECT CONNECT FULL COLOR BR30 (M/N: CLEDR309CD1)
RF BORAD BACK*

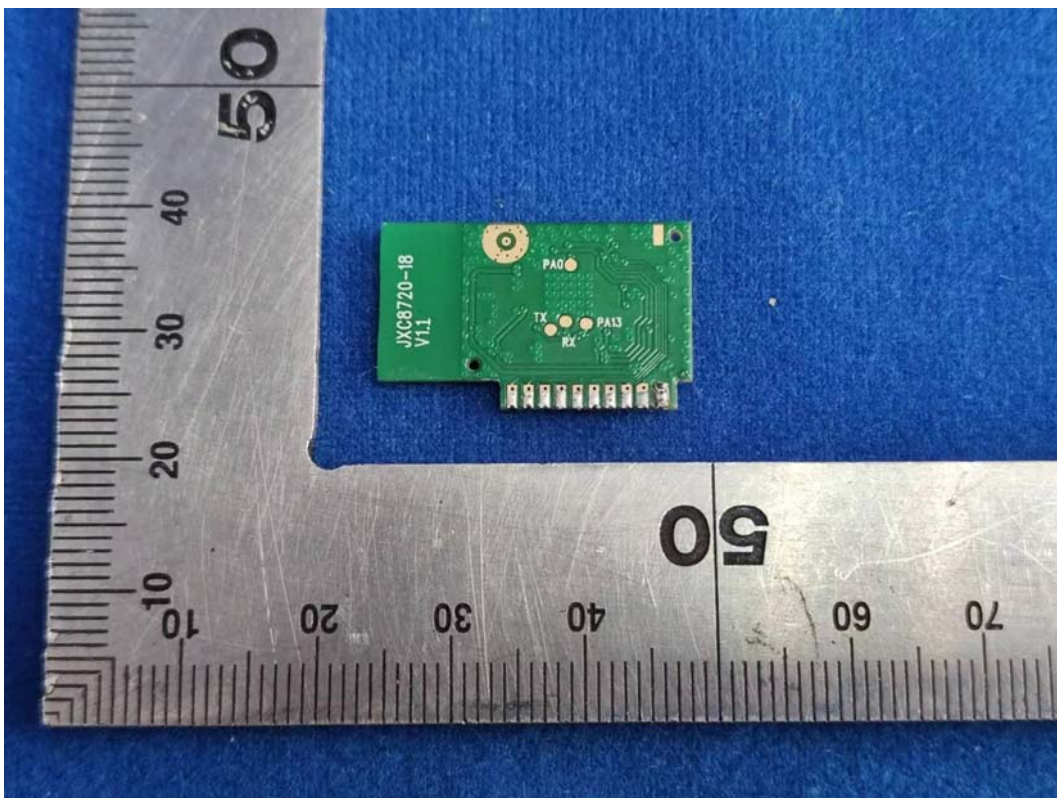


FIGURE 7
DIRECT CONNECT FULL COLOR BR30 (M/N: CLEDR309CD1)
CHIP&CRYSTAL ON RBOARD

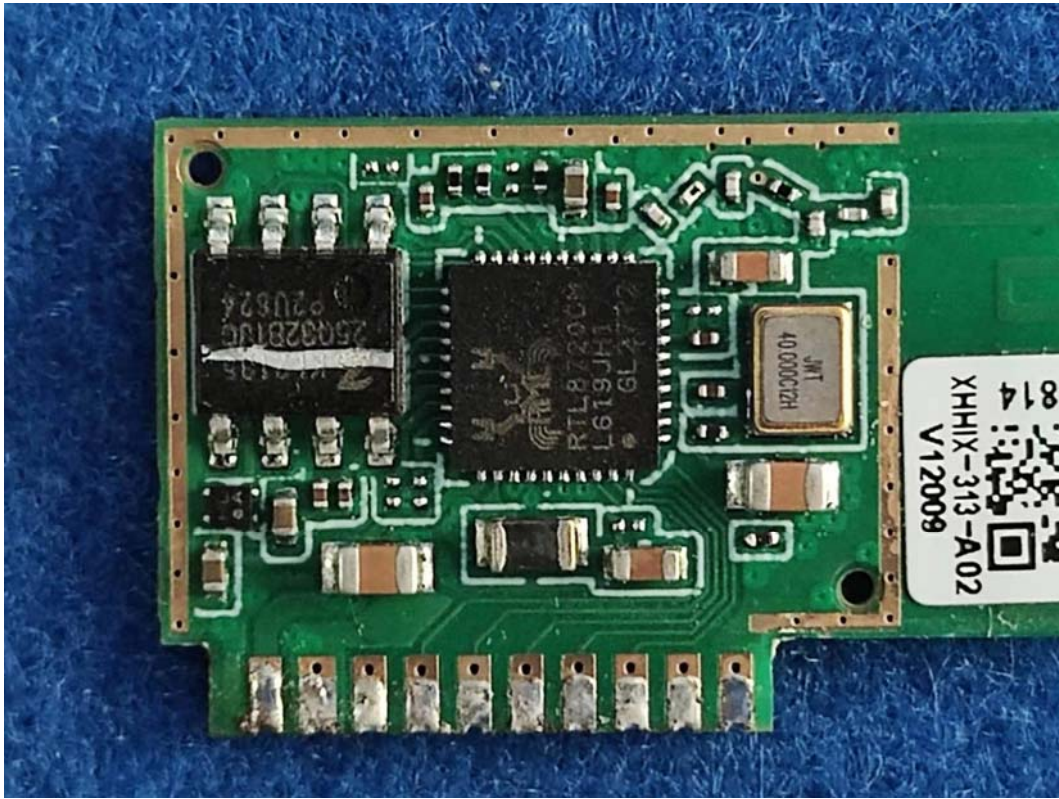


FIGURE 8
DIRECT CONNECT FULL COLOR BR30 (M/N: CLEDR309CD1)
LED FRONT

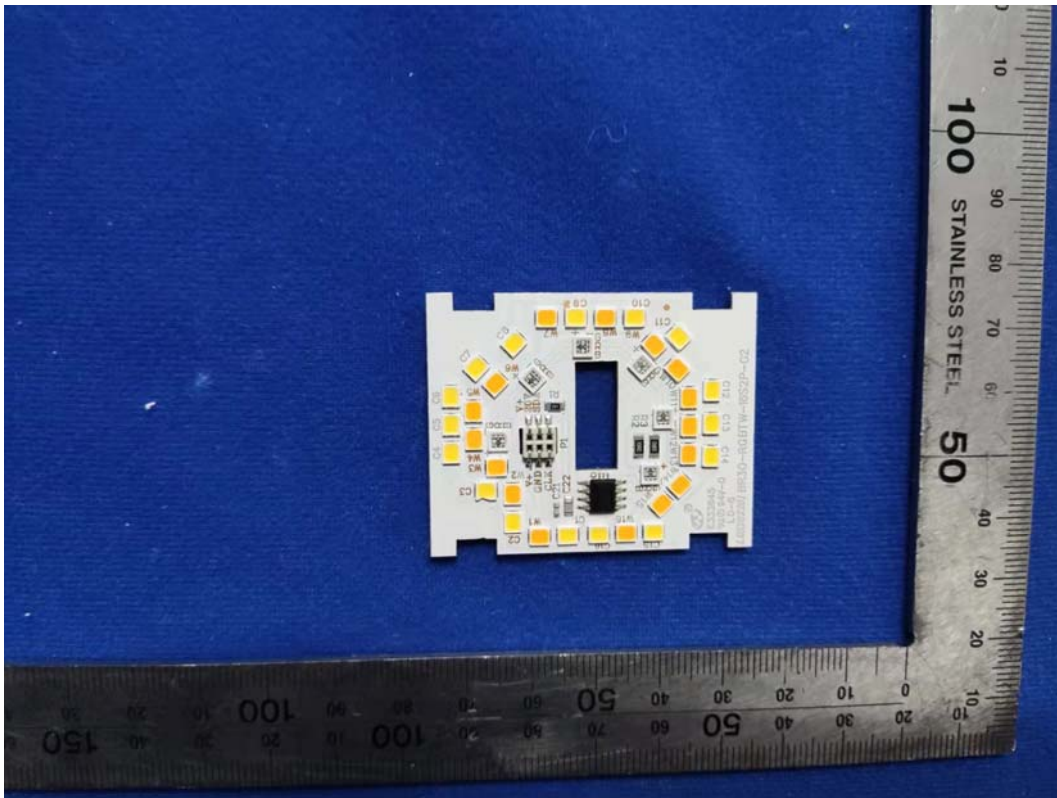


FIGURE 9
DIRECT CONNECT FULL COLOR BR30 (M/N: CLEDR309CD1)
LED BACK

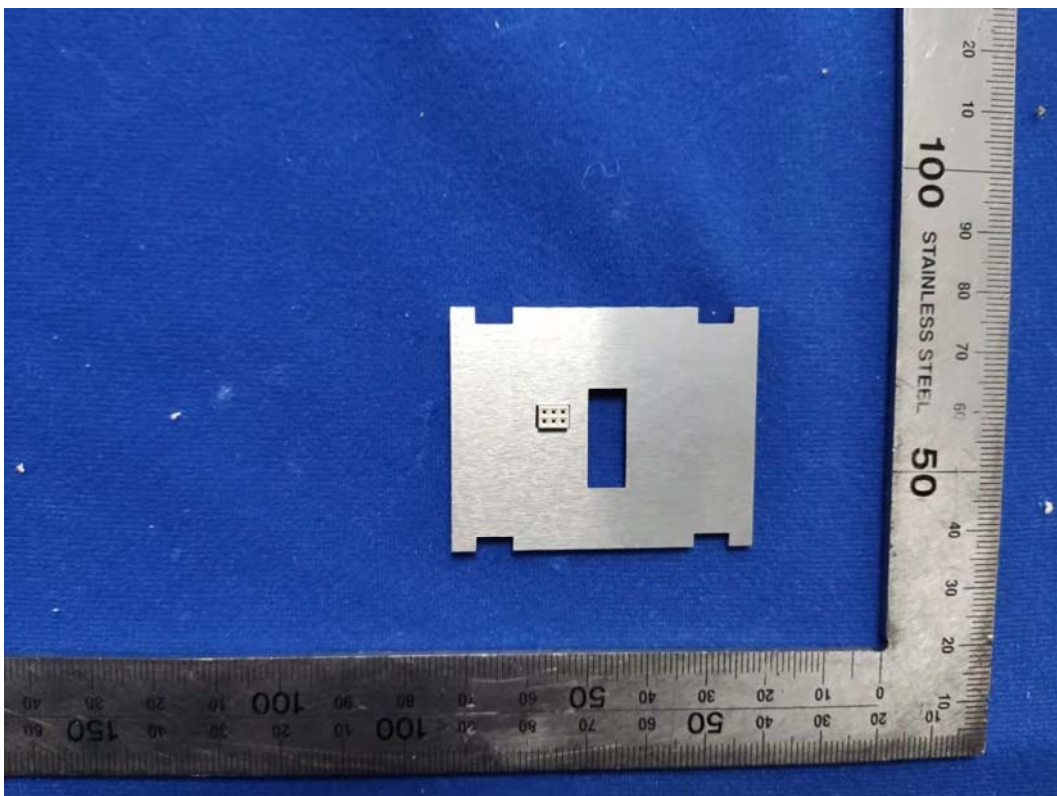


FIGURE 10
DIRECT CONNECT FULL COLOR BR30 (M/N: CLEDR309CD1)
ANTENNA

