

FIGURE 2
DIRECT CONNECT FULL COLOR BR30 (M/N: CLEDR309CD1)
GENERAL APPEARANCE (COVER REMOVED)

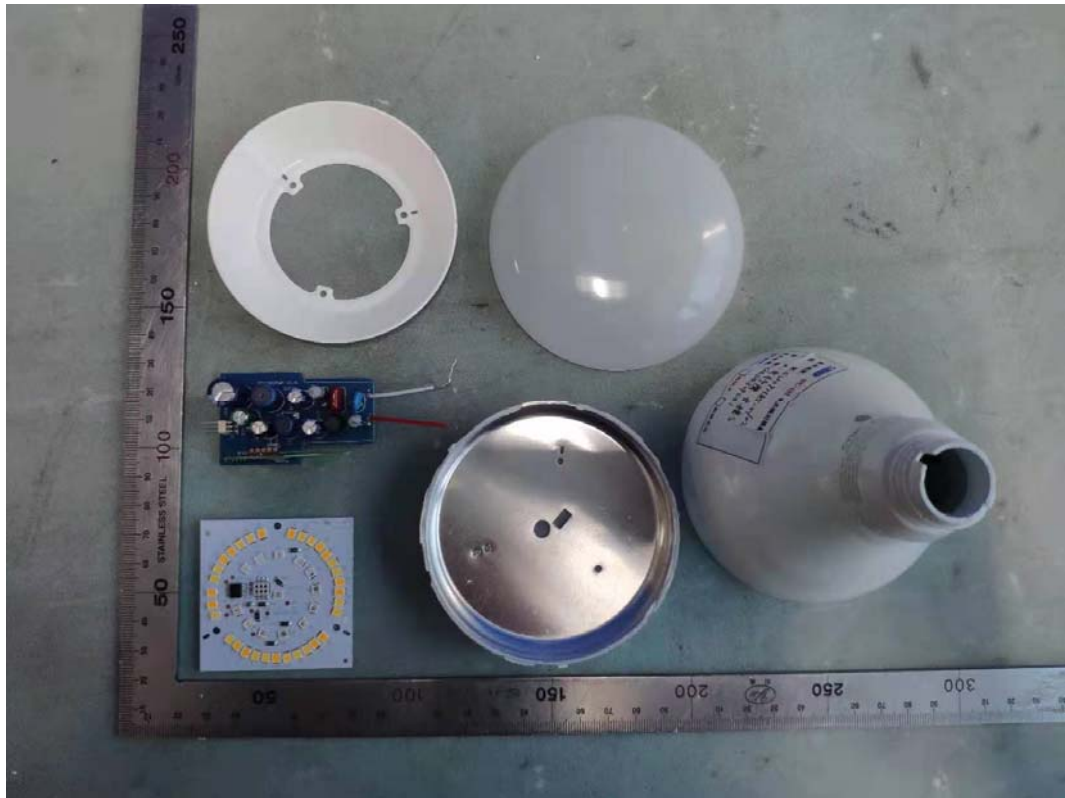


FIGURE 3
DIRECT CONNECT FULL COLOR BR30 (M/N: CLEDR309CD1)
LED (FRONT)

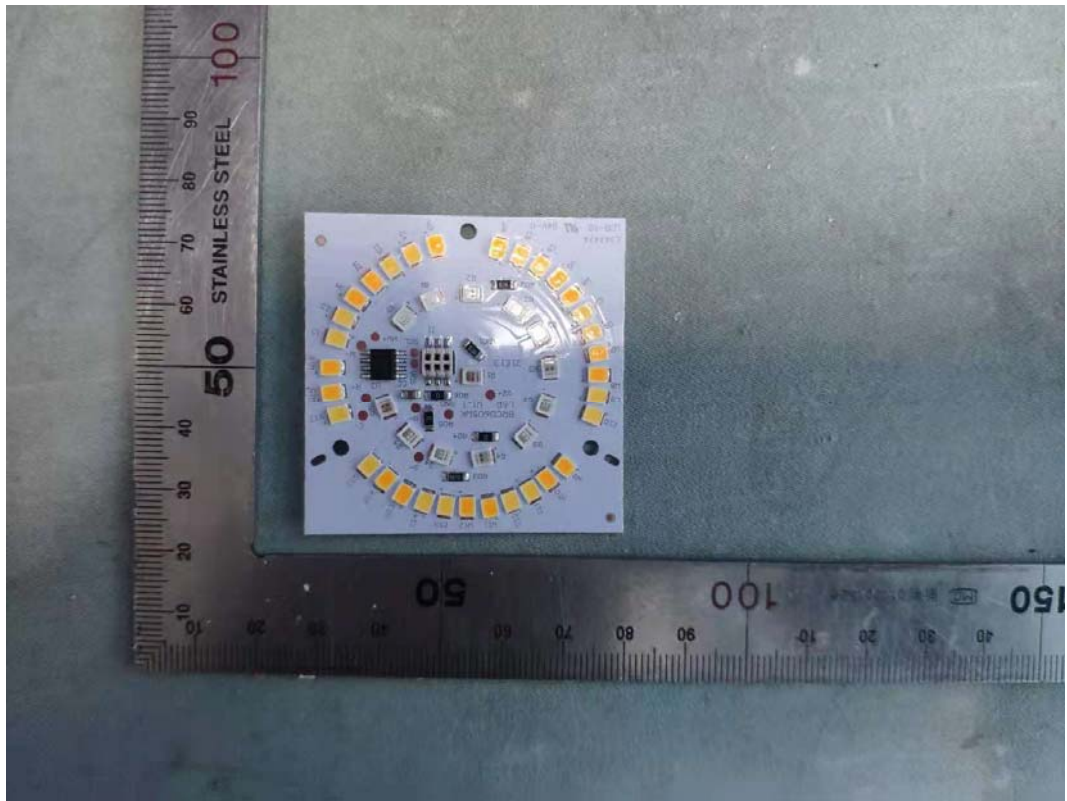


FIGURE 4
DIRECT CONNECT FULL COLOR BR30 (M/N: CLEDR309CD1)
LED (BACK)

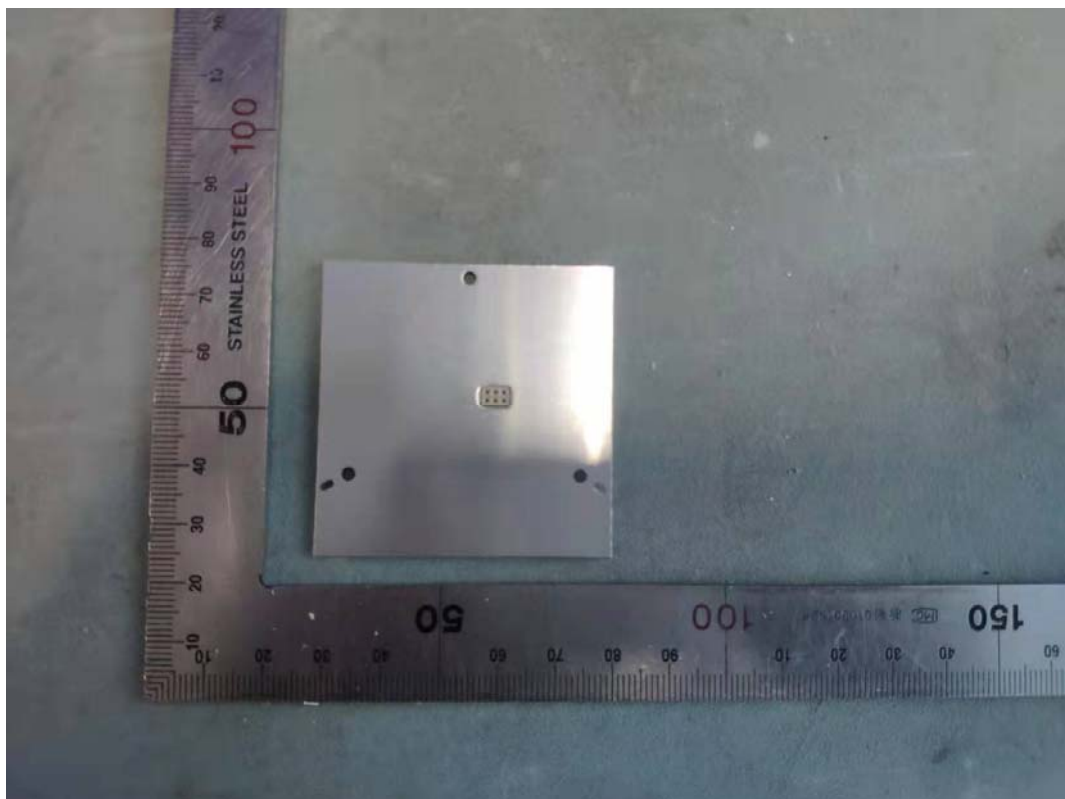


FIGURE 5
DIRECT CONNECT FULL COLOR BR30 (M/N: CLEDR309CD1)
MAIN BOARD (COMPONENT SIDE)

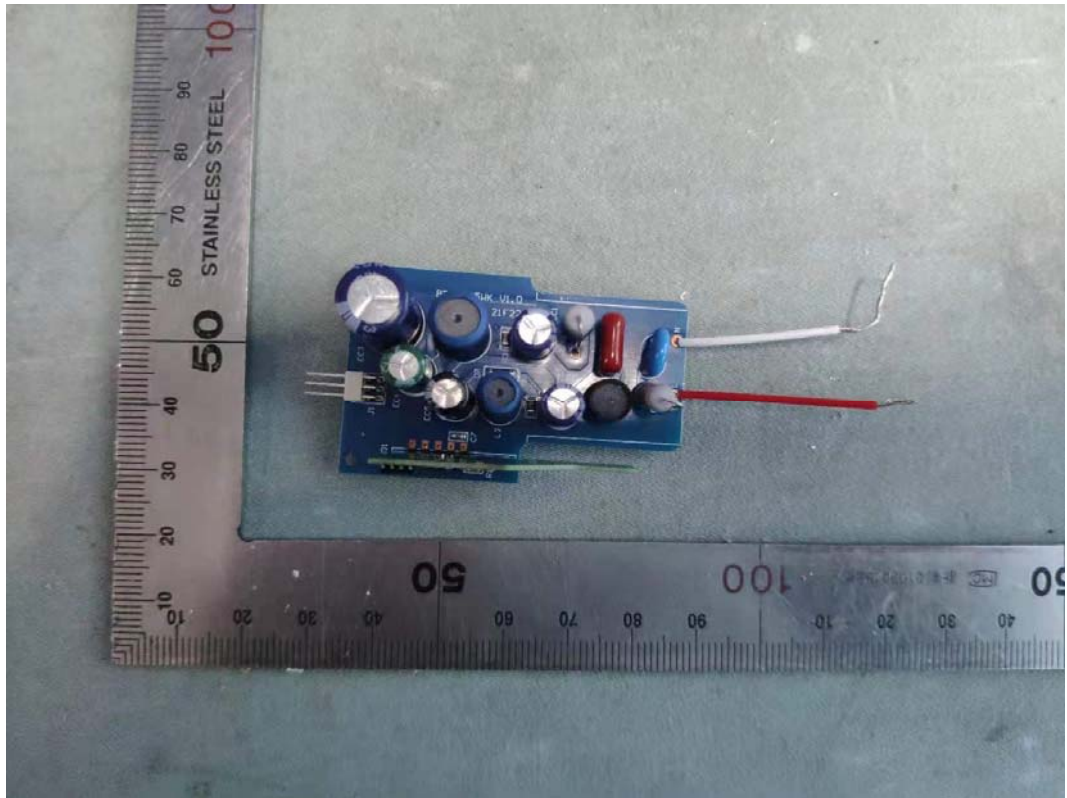


FIGURE 6
DIRECT CONNECT FULL COLOR BR30 (M/N: CLEDR309CD1)
MAIN BOARD (SOLDERED SIDE)

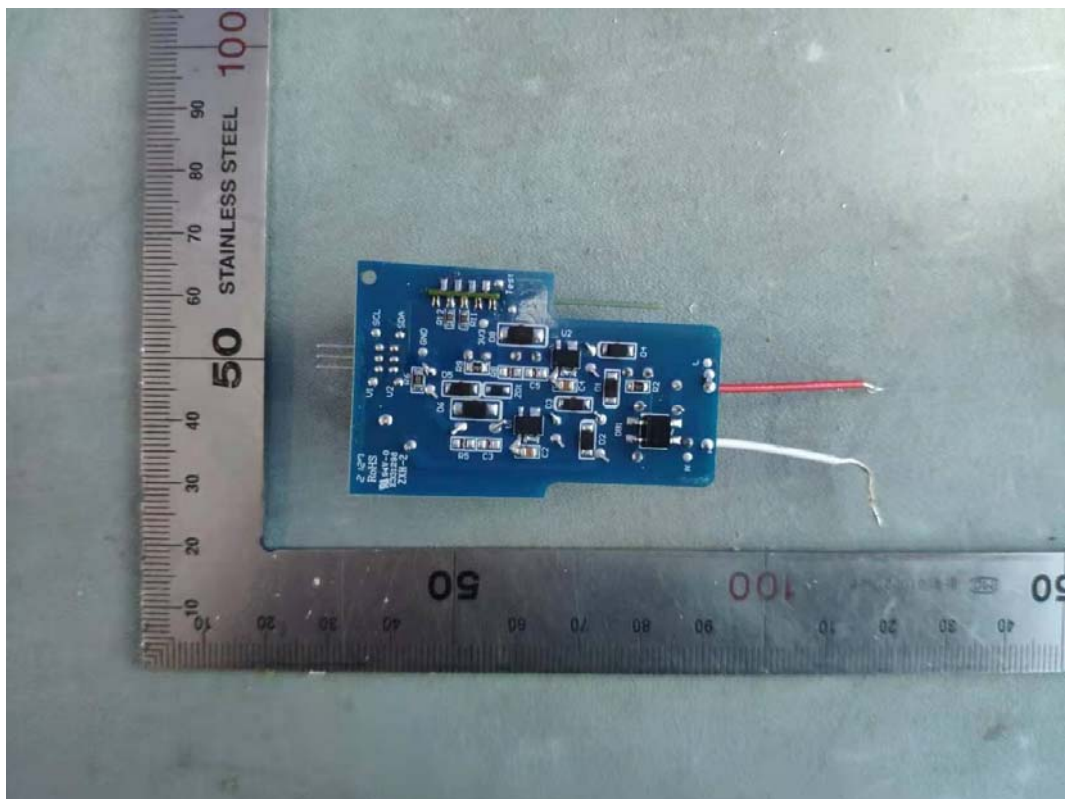


FIGURE 7
DIRECT CONNECT FULL COLOR BR30 (M/N: CLEDR309CD1)
RF BOARD LOCATION

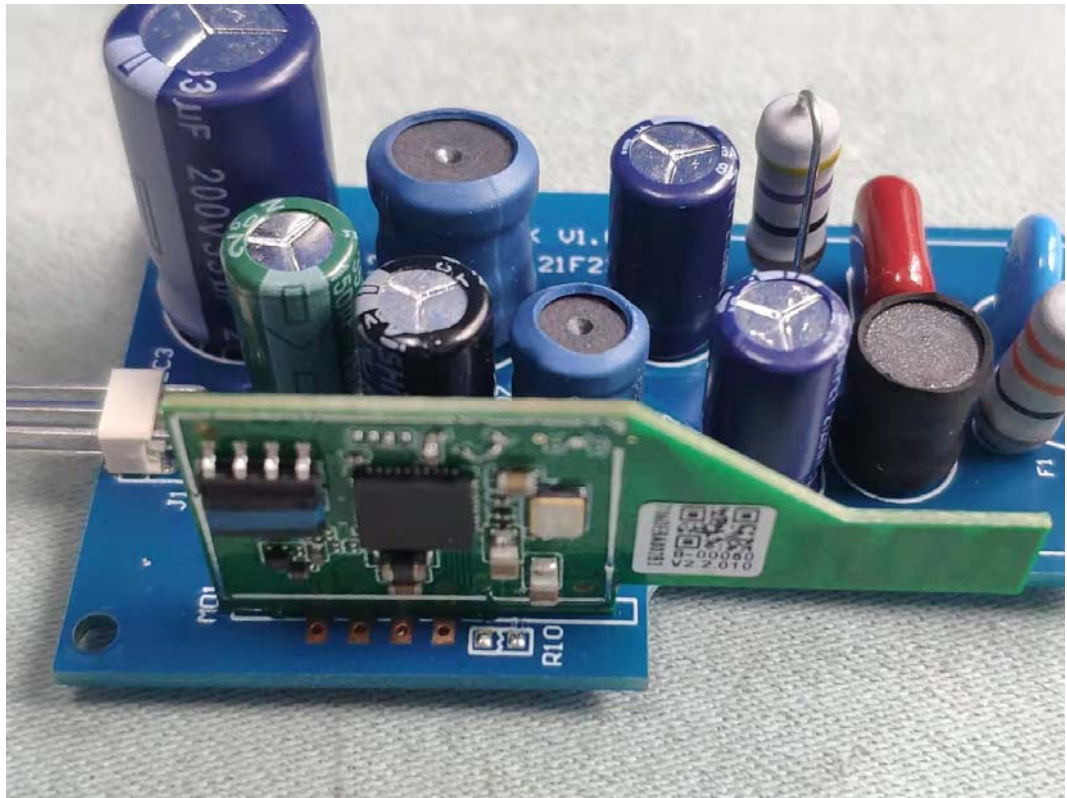


FIGURE 8
DIRECT CONNECT FULL COLOR BR30 (M/N: CLEDR309CD1)
RF BOARD LOCATED (FRONT SIDE)

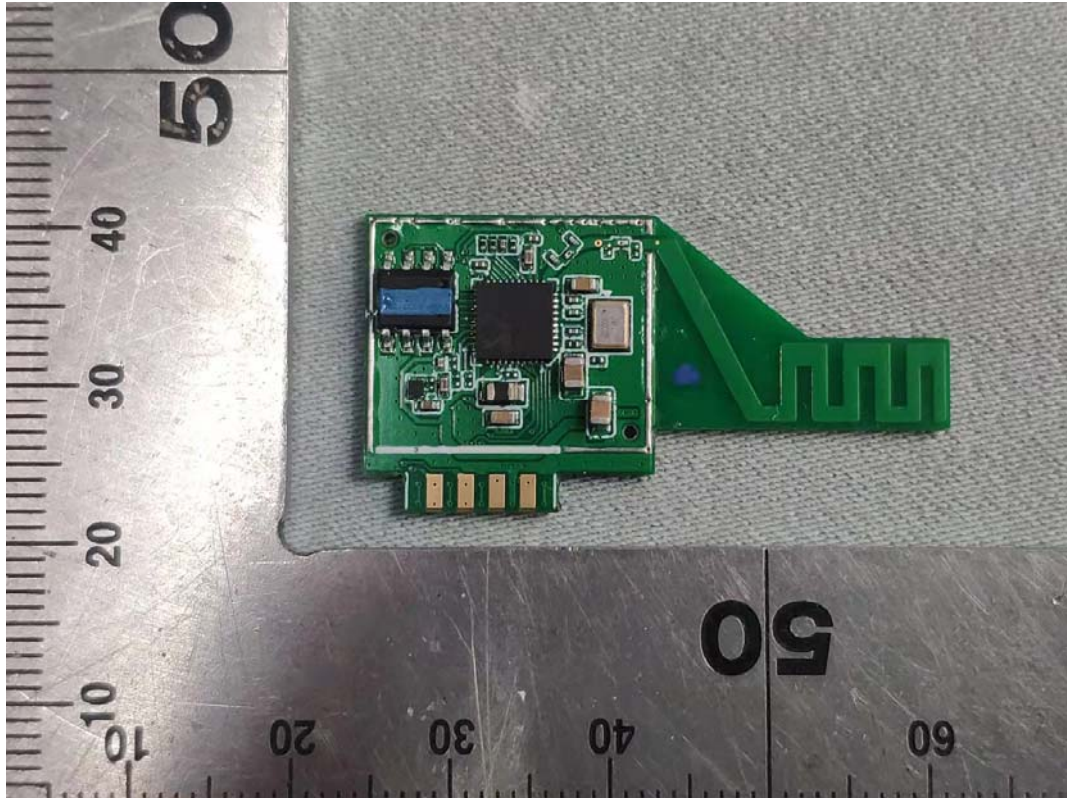


FIGURE 9
DIRECT CONNECT FULL COLOR BR30 (M/N: CLEDR309CD1)
RF BOARD (BACK SIDE)

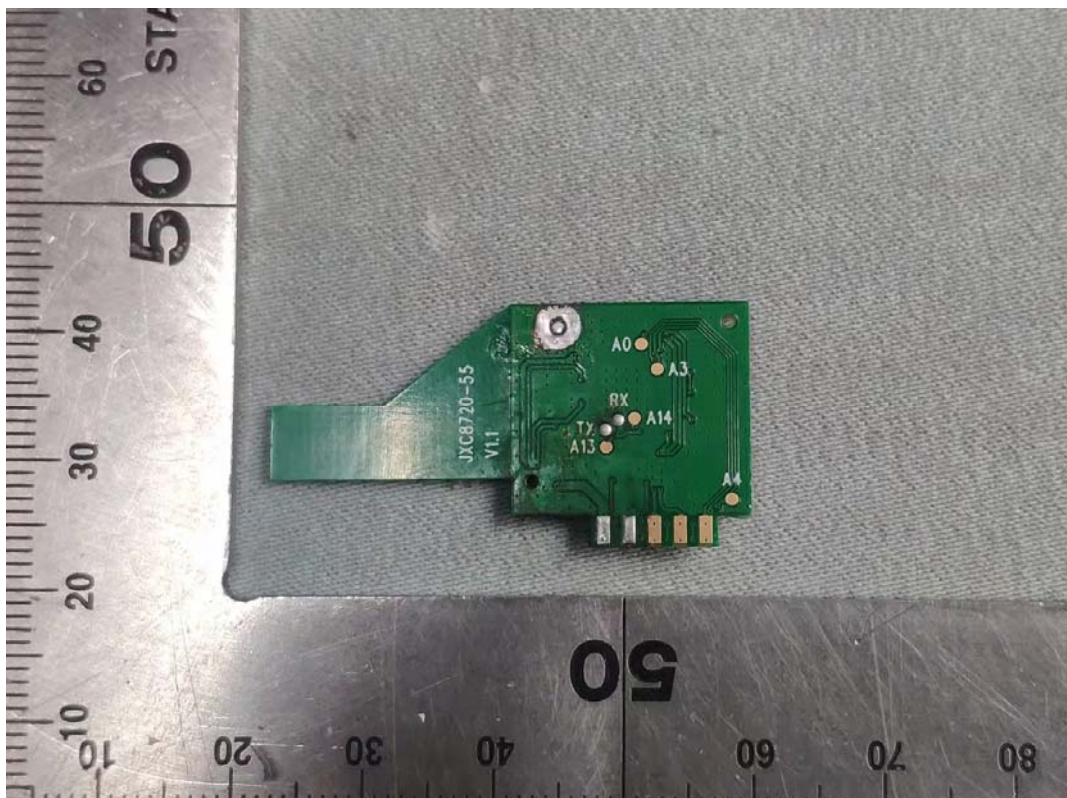


FIGURE 10
DIRECT CONNECT FULL COLOR BR30 (M/N: CLEDR309CD1)
CHIP AND CRYSTAL ON RF BOARD

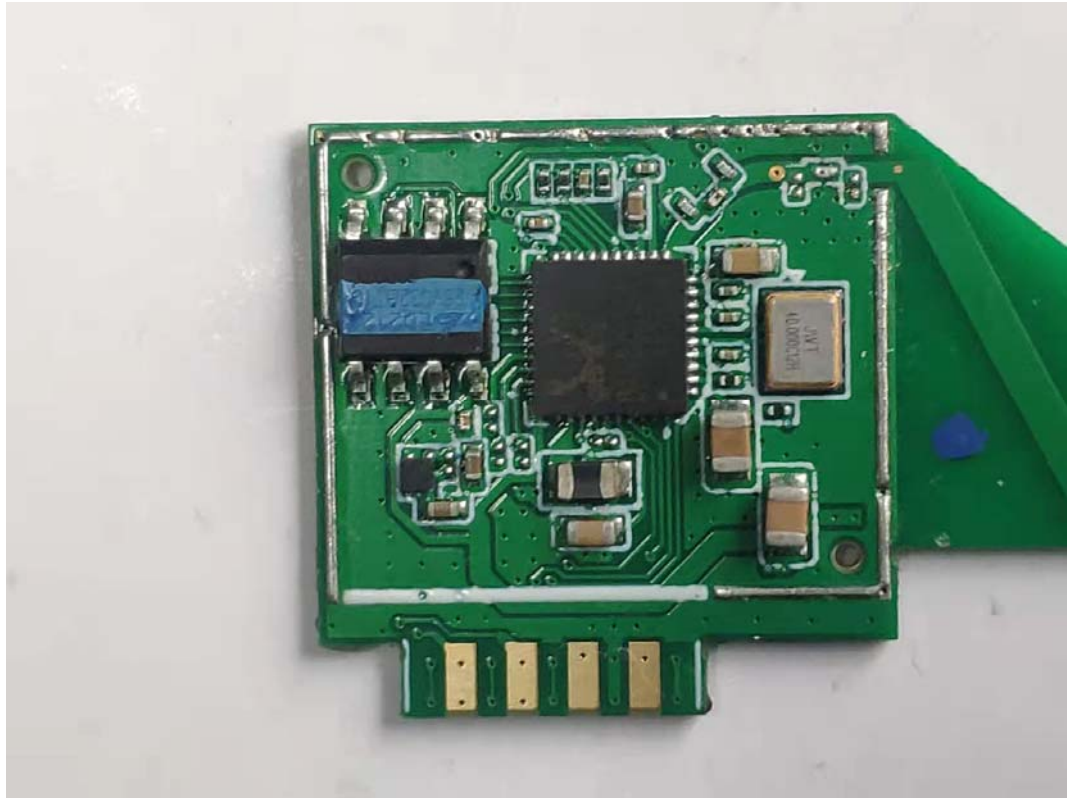


FIGURE 11
DIRECT CONNECT FULL COLOR BR30 (M/N: CLEDR309CD1)
ANTENNA

