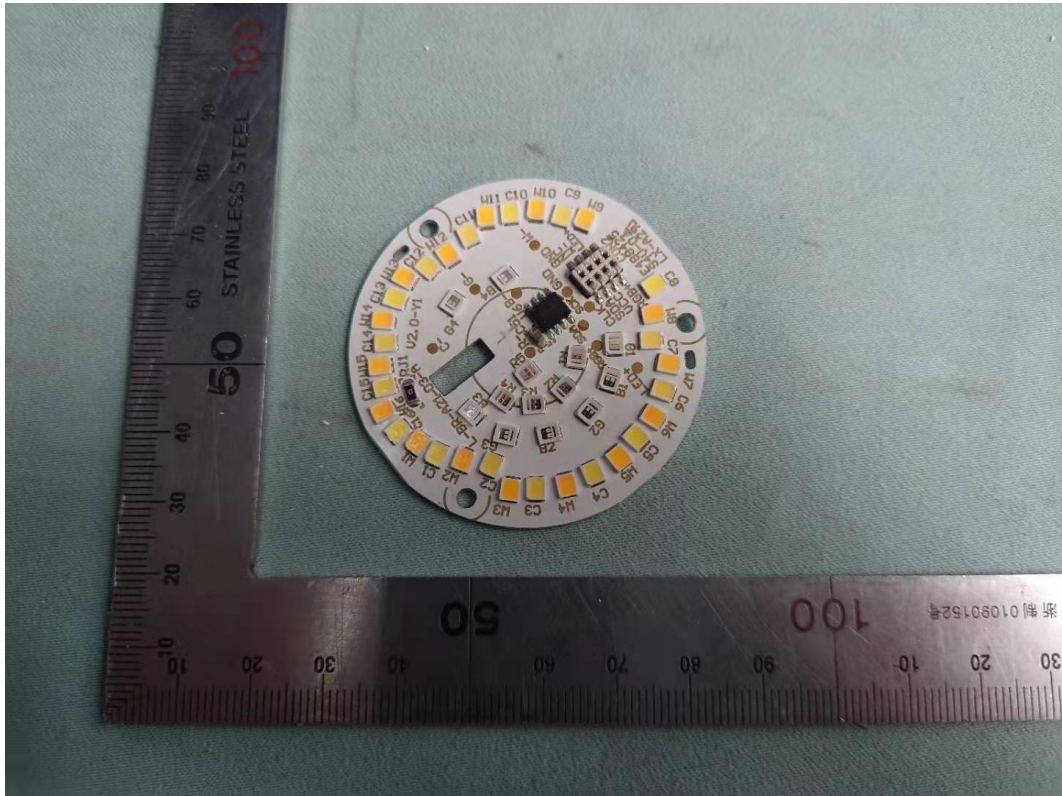
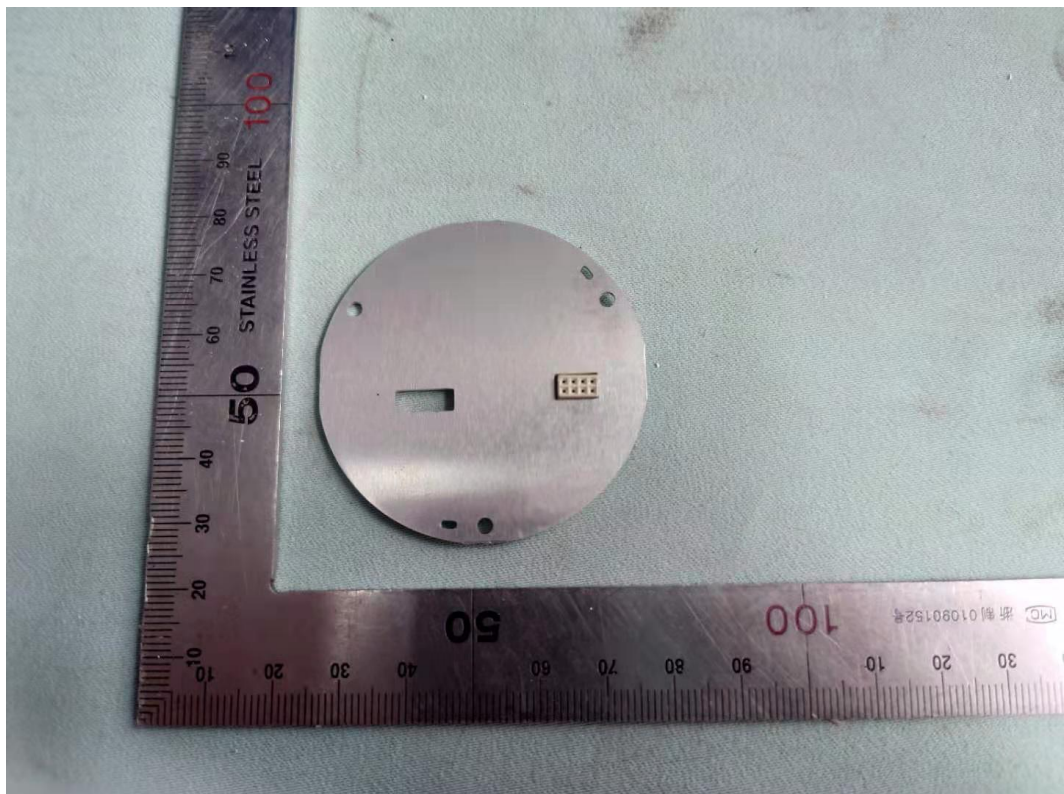


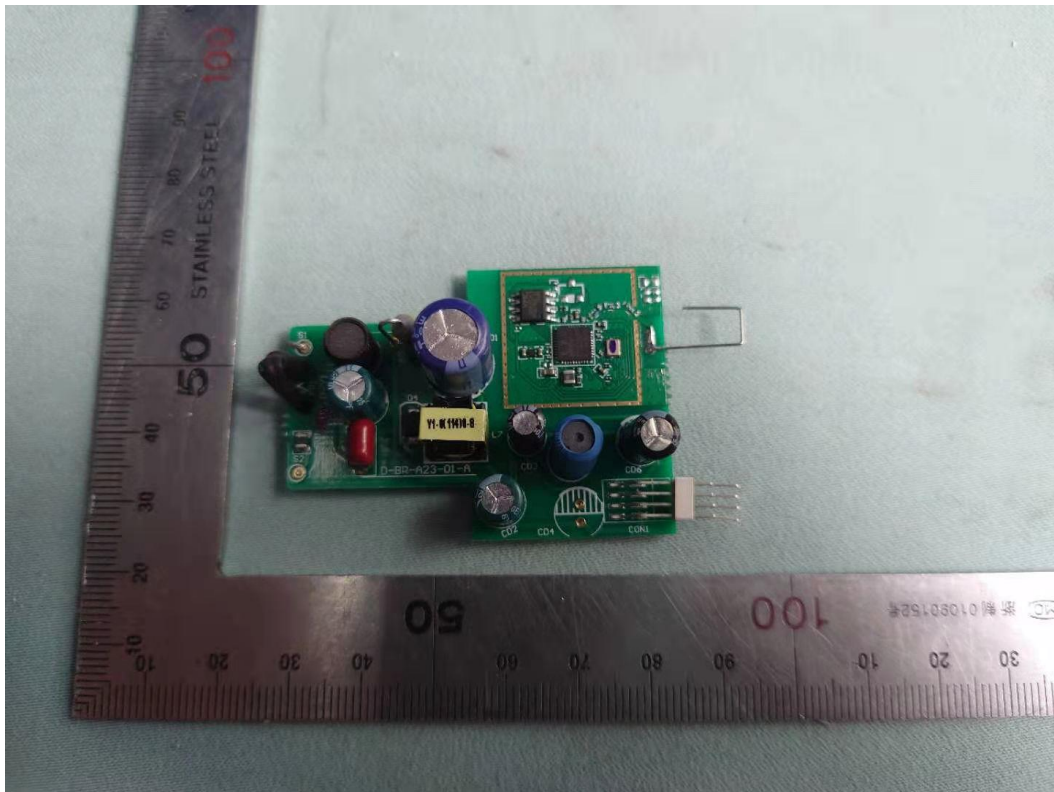
*FIGURE 3*  
*DUAL MODE FULL COLOR BR30 (M/N: CLEDR309CD1)*  
*LED FRONT*



*FIGURE 4*  
*DUAL MODE FULL COLOR BR30 (M/N: CLEDR309CD1)*  
*LED BACK*



*FIGURE 5  
DUAL MODE FULL COLOR BR30 (M/N: CLEDR309CD1)  
MAIN BOARD (COMPONENT SIDE)*



*FIGURE 6  
DUAL MODE FULL COLOR BR30 (M/N: CLEDR309CD1)  
MAIN BOARD (SOLDERED SIDE)*

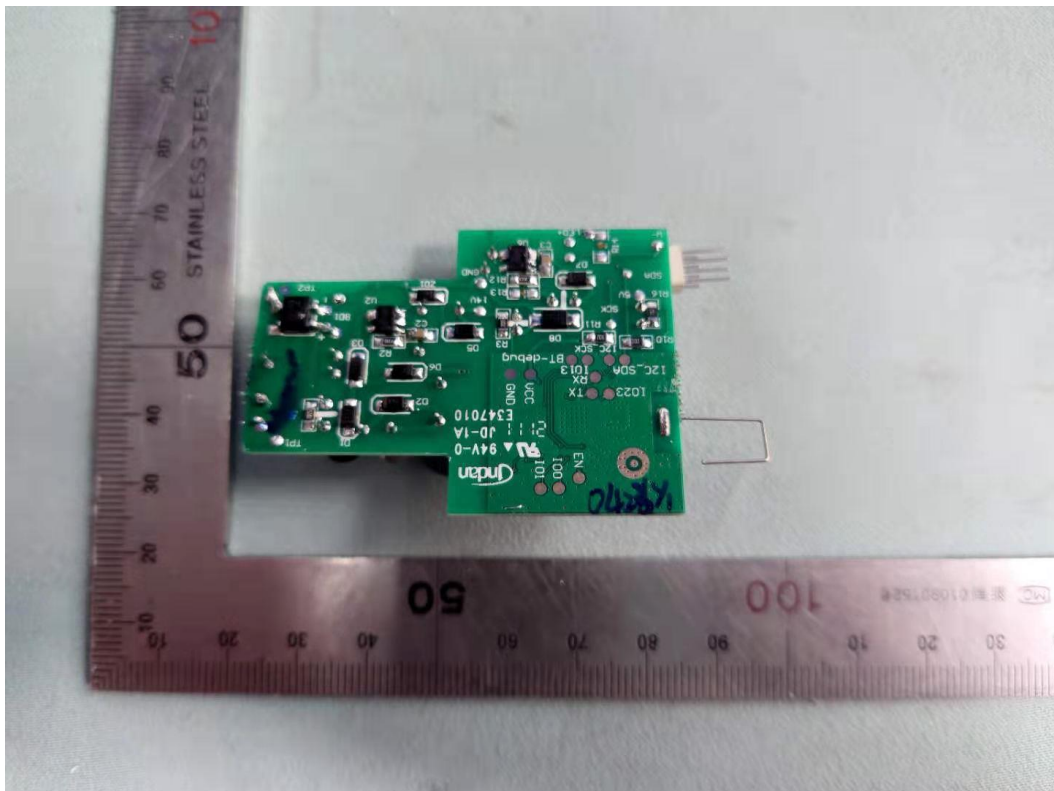


FIGURE 7  
DUAL MODE FULL COLOR BR30 (M/N: CLEDR309CD1)  
CHIP & CRYSTAL ON BOARD

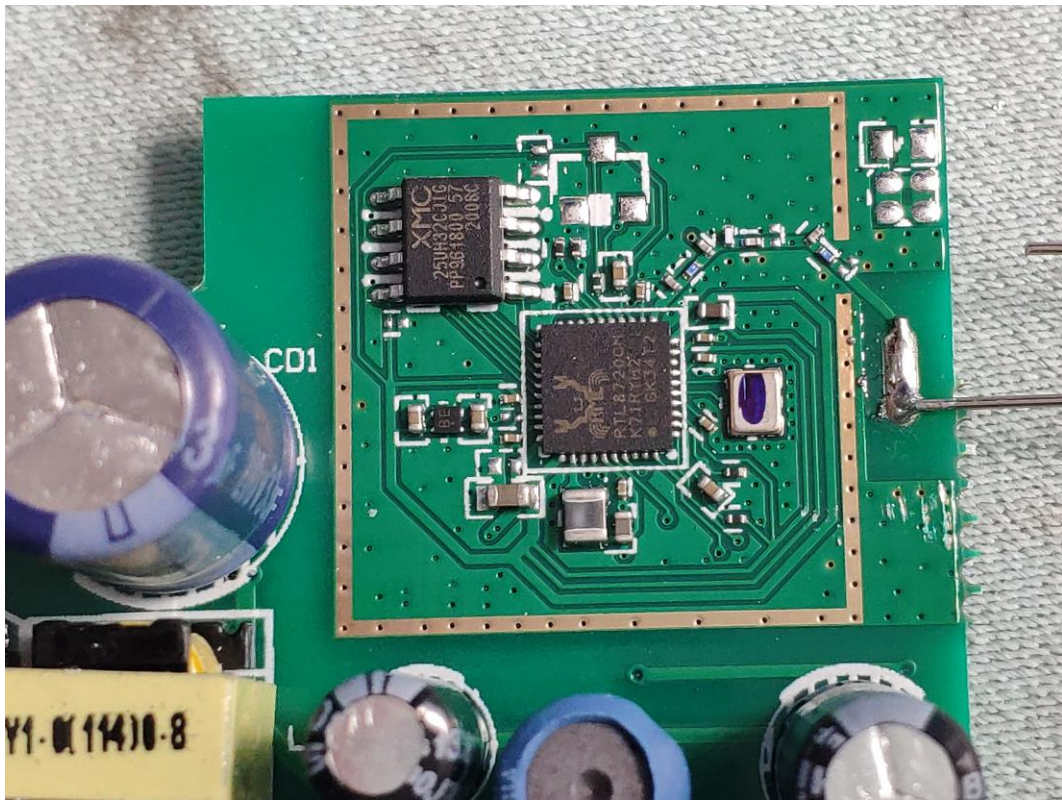


FIGURE 8  
DUAL MODE FULL COLOR BR30 (M/N: CLEDR309CD1)  
RF BOARD (COMPONENT SIDE)

