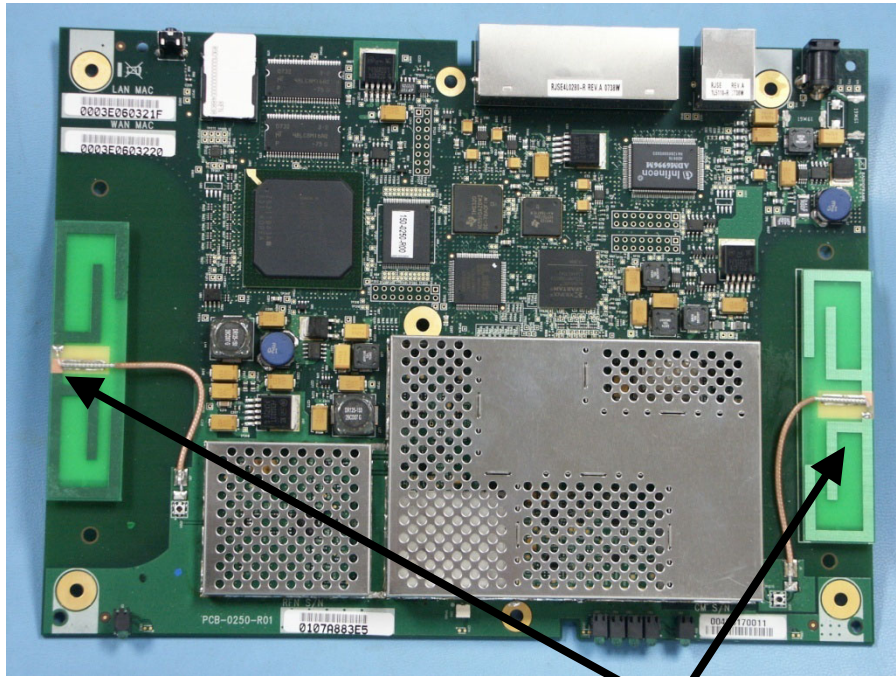
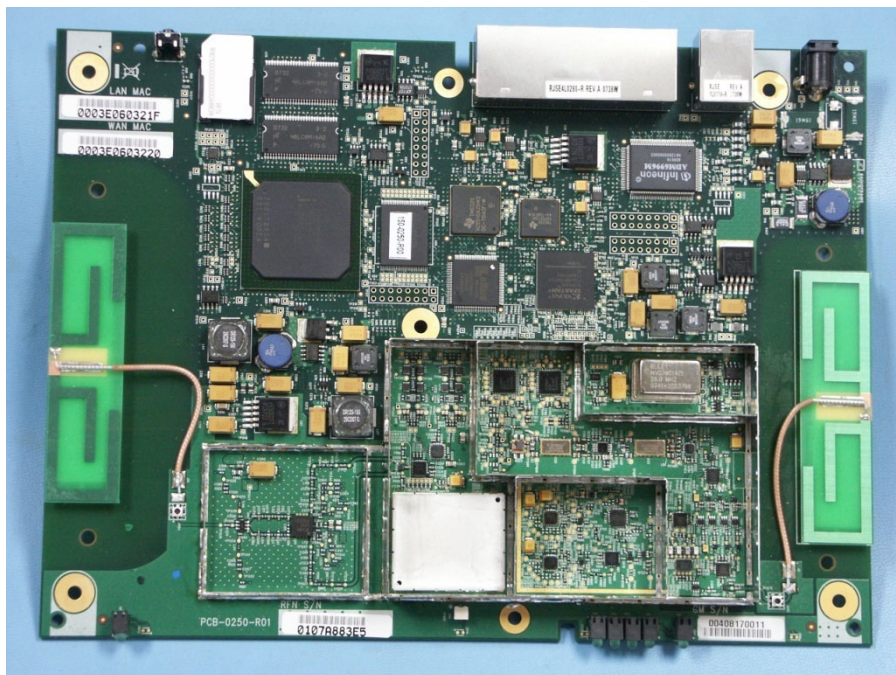


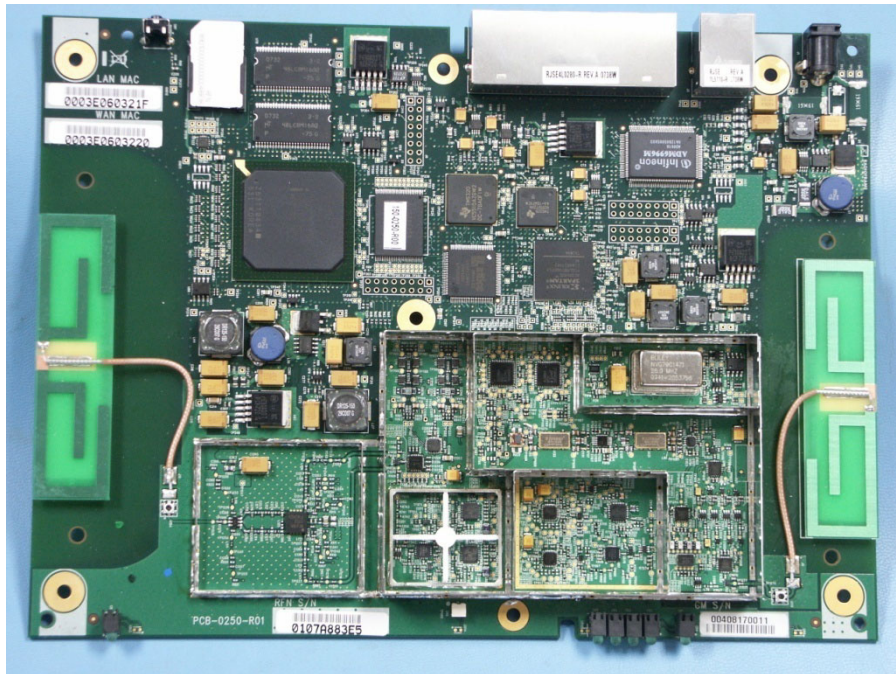
RadioFrame Networks S-Series OmniCell@Home™ Picocell Internal Photographs



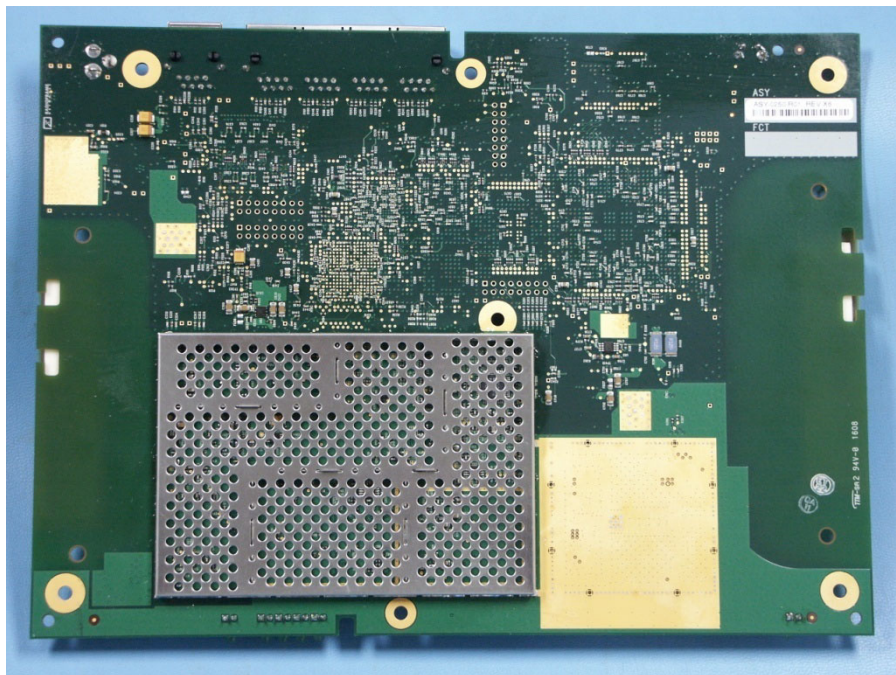
Omnicell@Home™ PCA top with shields installed. The Patch Antennas are attached to the PCA on the left and right sides.



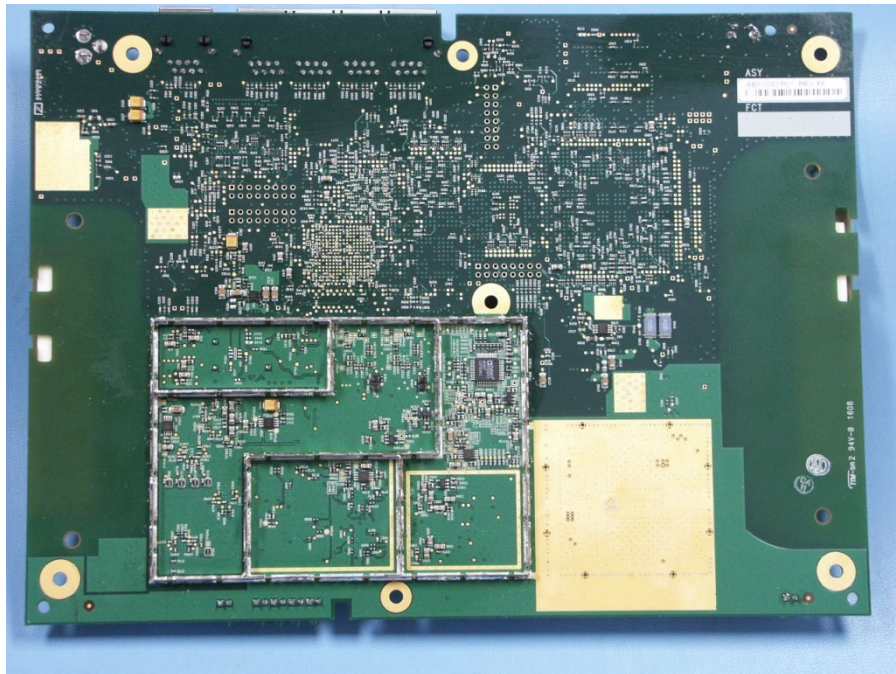
Omnicell@Home™ PCA top with small shield installed.



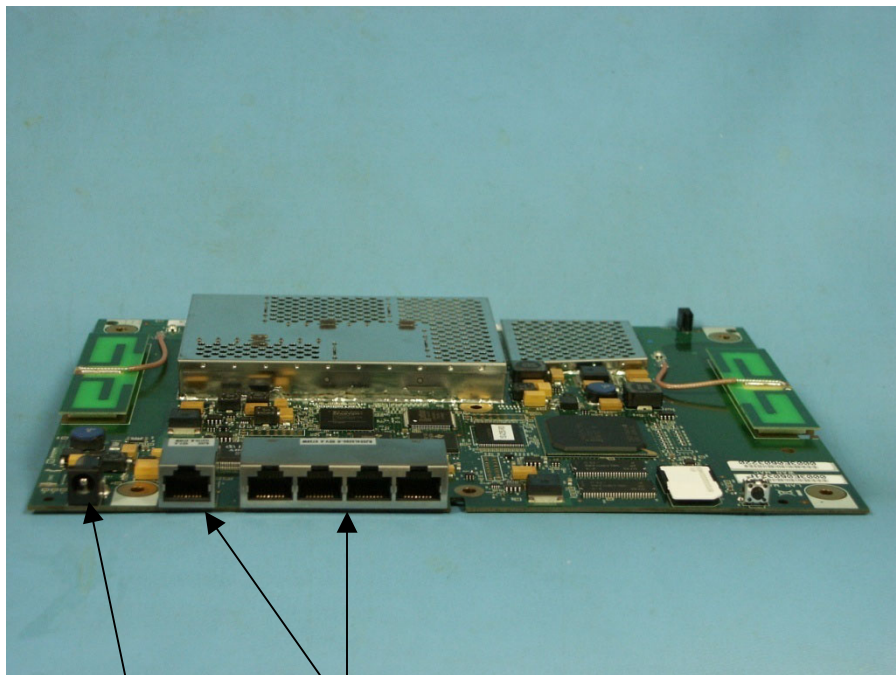
Omnicell@Home™ PCA Top with shields removed.



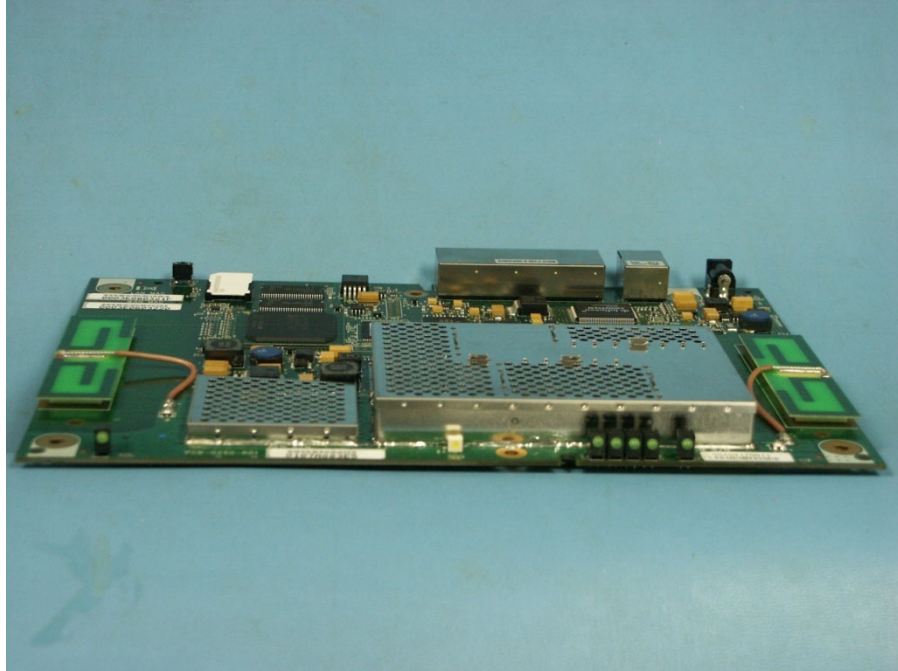
Omnicell@Home™ PCA bottom with shield installed.



Omnicell@Home™ PCA Bottom with shield removed.



Power Inlet Jack and Ethernet ports on the Omnicell@Home™ PCA.



Omnicell@Home™ PCA with Display LEDs