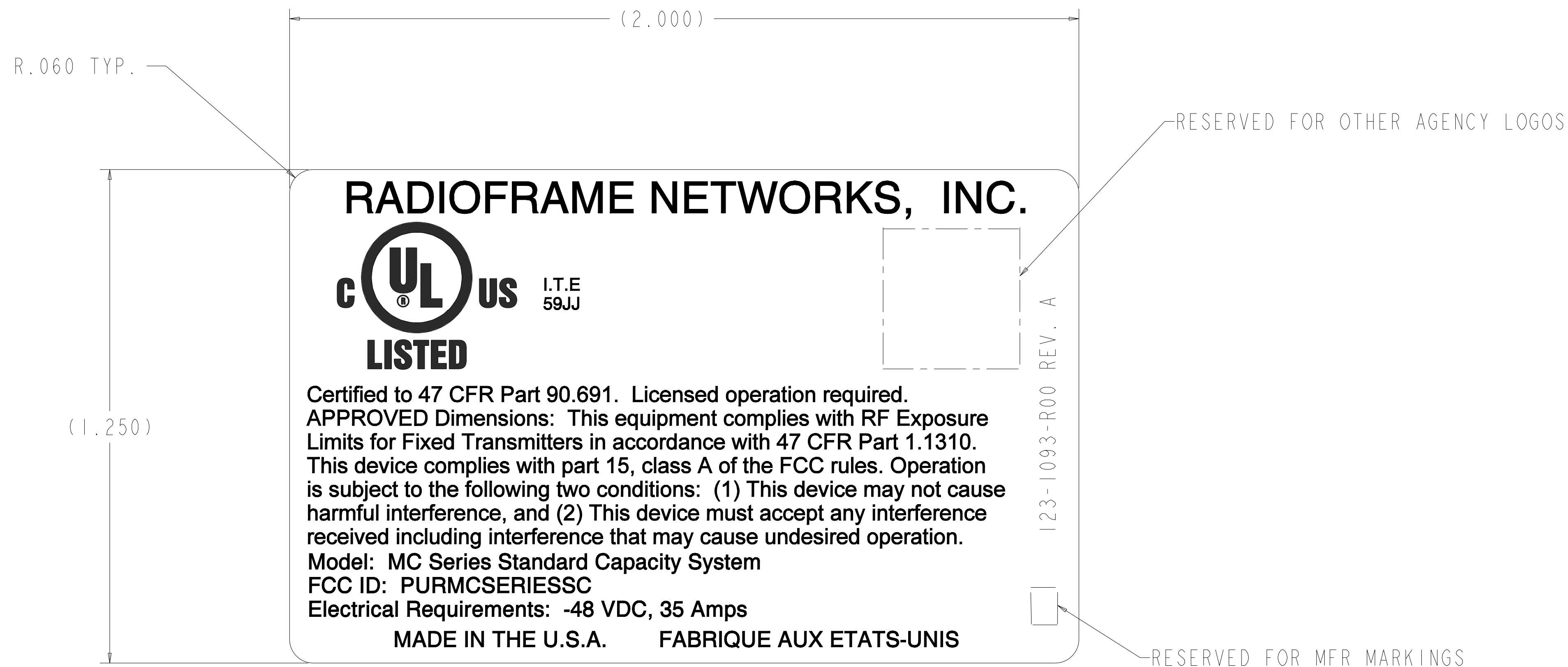


REVISIONS				
REV	ECO NO.	DESCRIPTION	DRAWN BY	DATE APPR.
A	-	INITIAL RELEASE	SAM	2/22/08

NOTES: UNLESS OTHERWISE SPECIFIED

- MATERIAL: .002"-.004" WHITE POLYESTER WITH PSA / WITH A MATTE POLYESTER OVERLAMINATE.
ALTERNATE: .002" POLYESTER WITH PSA WITH A UV MATTE PRINTED CLEAR COAT.
- ADHESIVE: PPS ONE SIDE ONLY
- GRAPHICS COLOR: BLACK
- ALL PARTS, MATERIALS AND FINISHES MUST BE RoHS COMPLIANT. ALL INVOLVED PARTIES IN THE MAKING OF THESE PARTS MUST PROVIDE STATEMENTS OF RoHS COMPLIANCE TO RADIOFRAME NETWORKS PRIOR TO MANUFACTURING FOR APPROVAL.



THIS DOCUMENT AND THE PROPRIETARY, TRADE SECRET AND CONFIDENTIAL INFORMATION IT CONTAINS ARE THE PROPERTY OF RADIOFRAME NETWORKS. DO NOT COPY, DISTRIBUTE, DISCLOSE, OR USE IN ANY MANNER WITHOUT THE PRIOR WRITTEN CONSENT OF RADIOFRAME NETWORKS.					
UNLESS OTHERWISE SPECIFIED DIMENSIONS ARE IN INCHES TOLERANCES ARE: LINEAR .X ± 0.1 .XX ± 0.03 .XXX ± 0.020 ANGULAR ± 0.5	JOB NO.		RADIOFRAME NETWORKS,™ INC. 1120 112TH AVE NE SUITE 600 BELLEVUE, WA 98004		
	APPROVALS	DATE	TITLE		
MATERIAL	DRAWN S. MCKERNAN	2/22/08	LABEL, UL/FCC, MC-SERIES, STANDARD CAPACITY SYSTEM, 35A.		
FINISH	CHECKED		SIZE D	THIRD ANGLE PROJECTION	DWG NAME: 123-1093-R00
DO NOT SCALE DRAWING	ISSUED				SCALE 5.000
	APPROVED				SHEET 1 OF 1