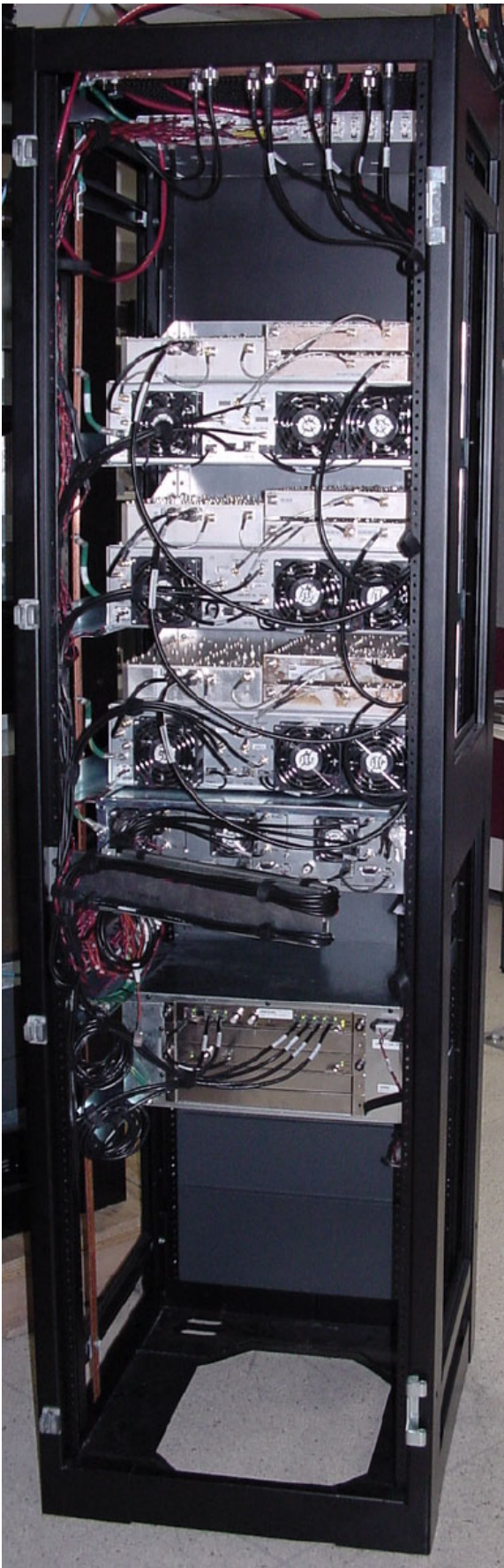


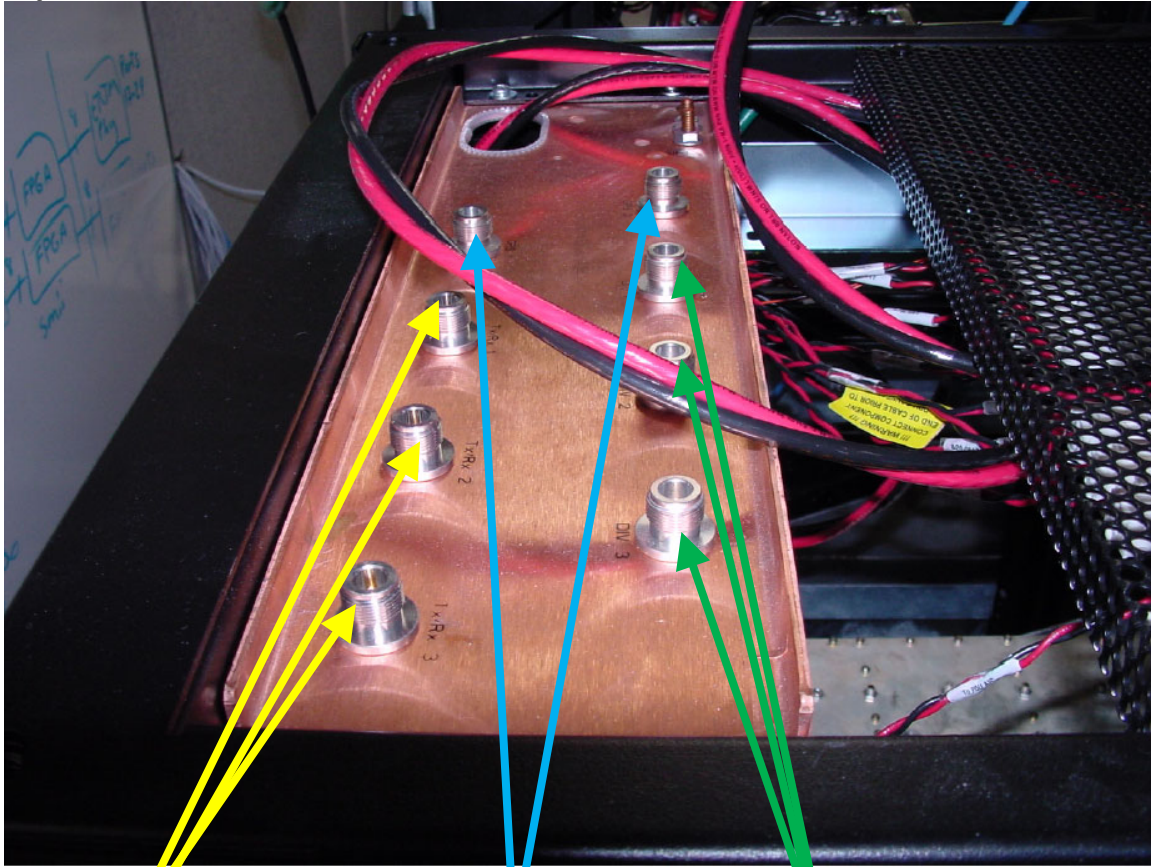


Front View



Rear View

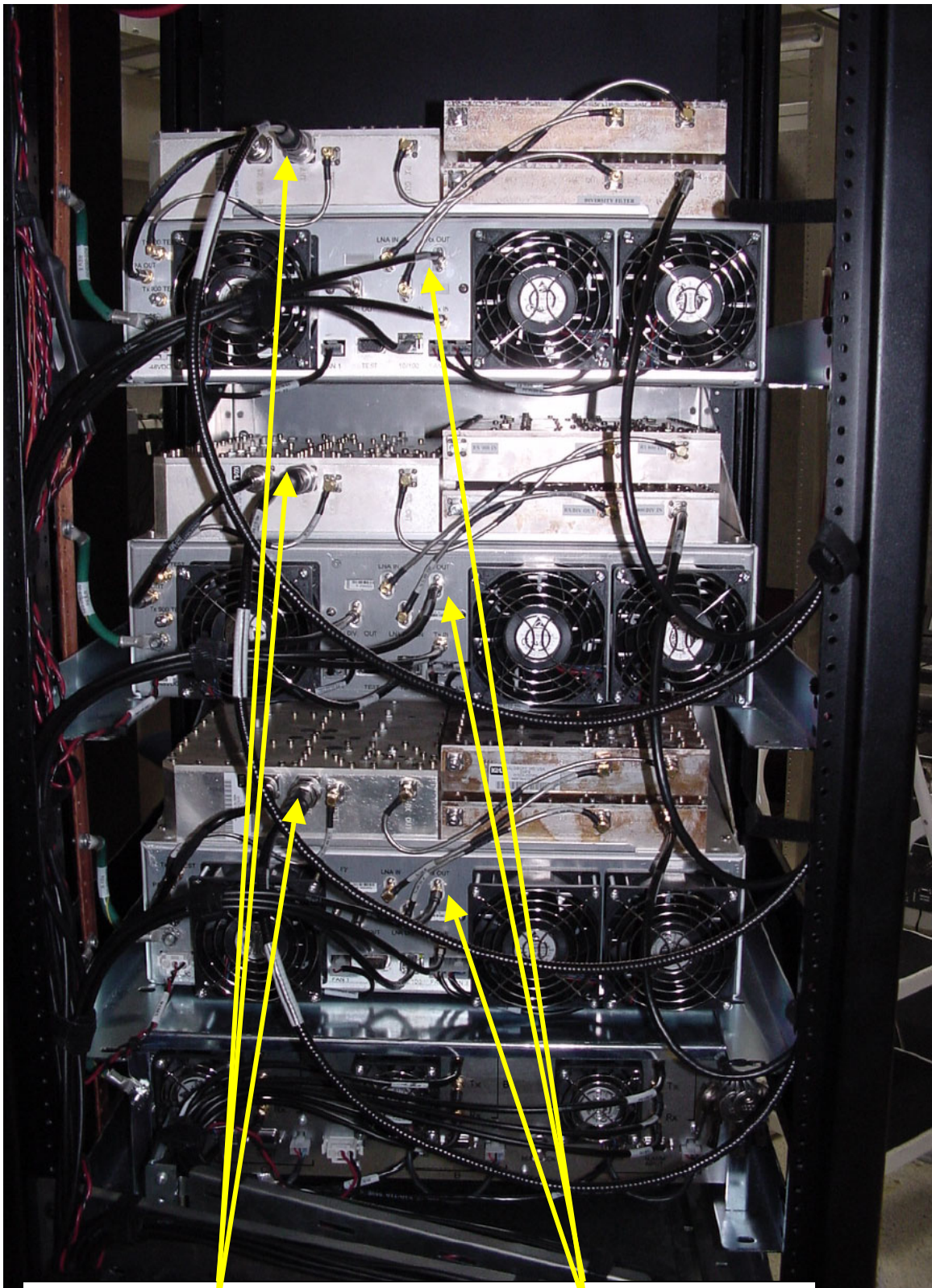
System Transmit Path



Tx/Rx Antenna Ports

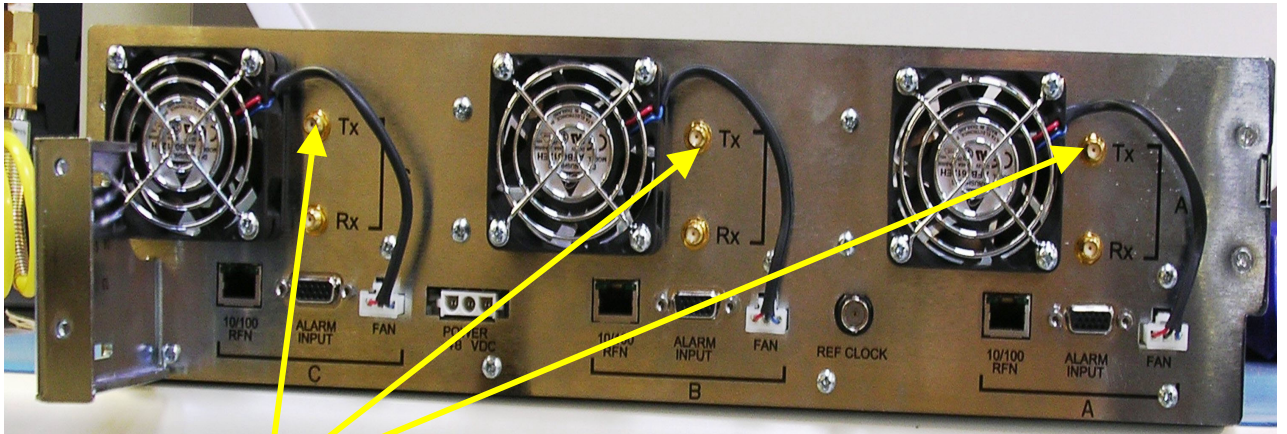
GPS Ports

Div. Antenna Ports

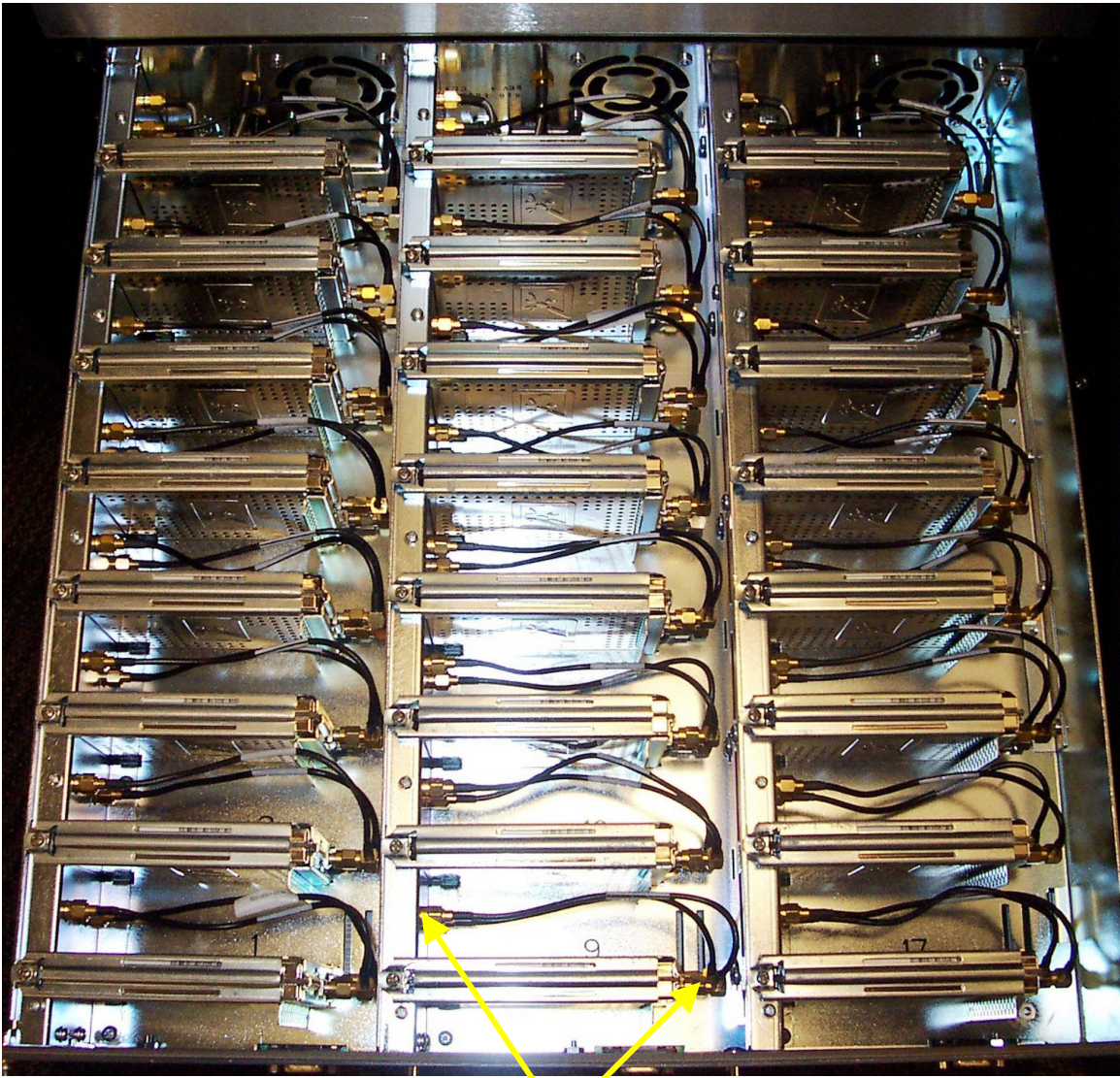


800 MHz
Transmit signal out to Antenna

Transmit signal in
from Radio in RBS



Transmit Signals out from Radios



Transmit signals from radio to combiner board. 8 radios per slice (combiner) and a total of 3 slices. The top cable is transmit and the bottom is receive.