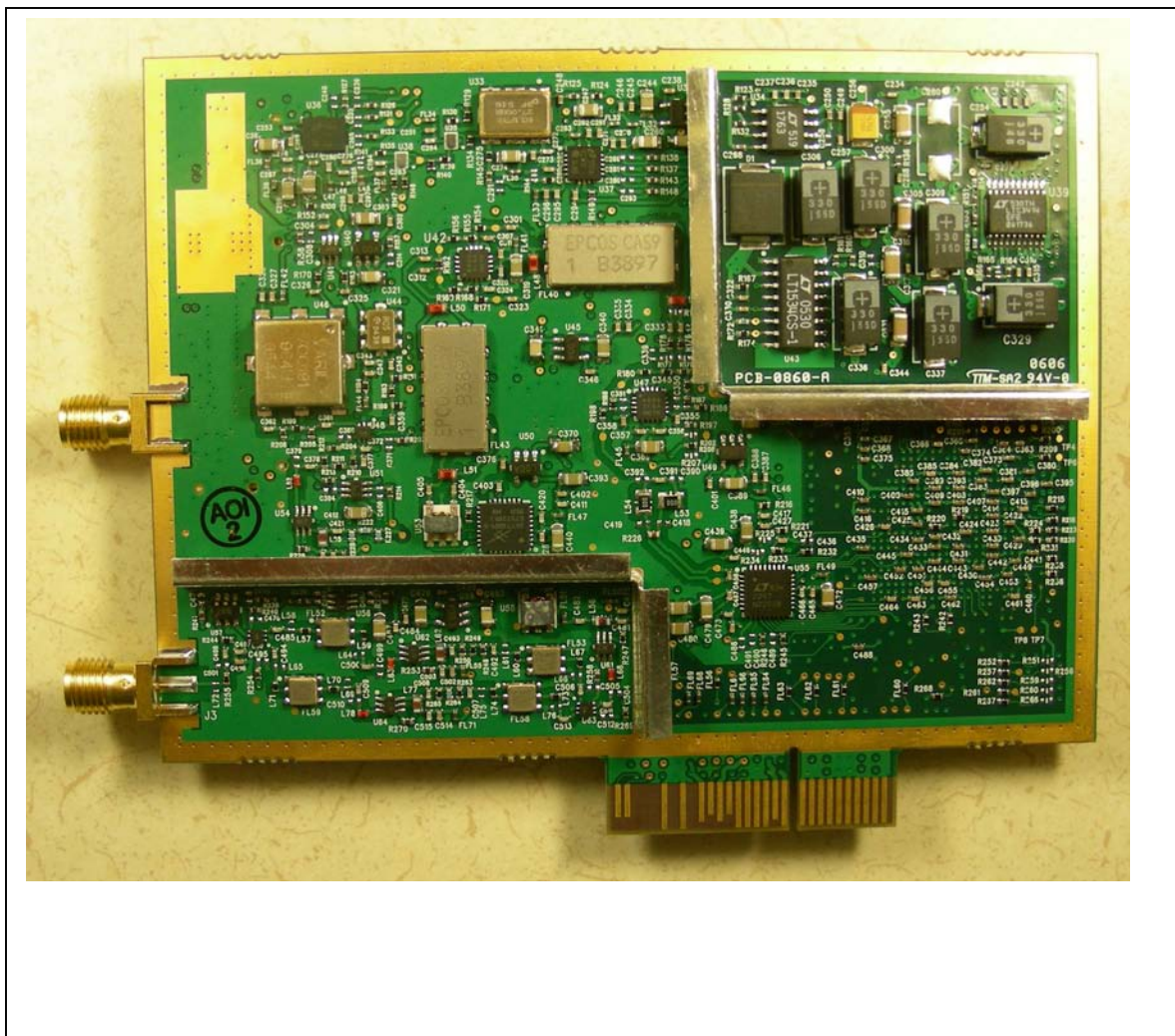


Transmit signals from radio to combiner board. 8 radios per slice (combiner) and a total of 3 slices. The top cable is transmit and the bottom is receive.

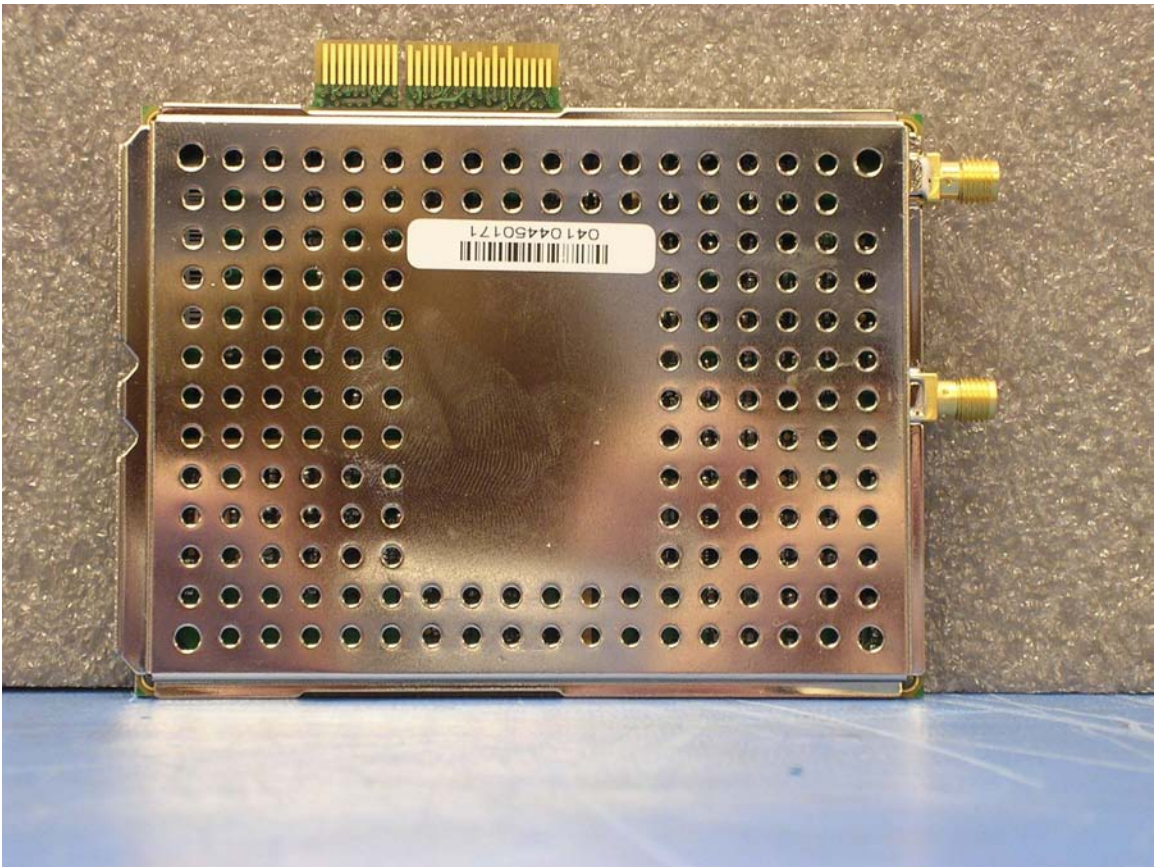
RadioBlade Photos

MCRB PCB Front

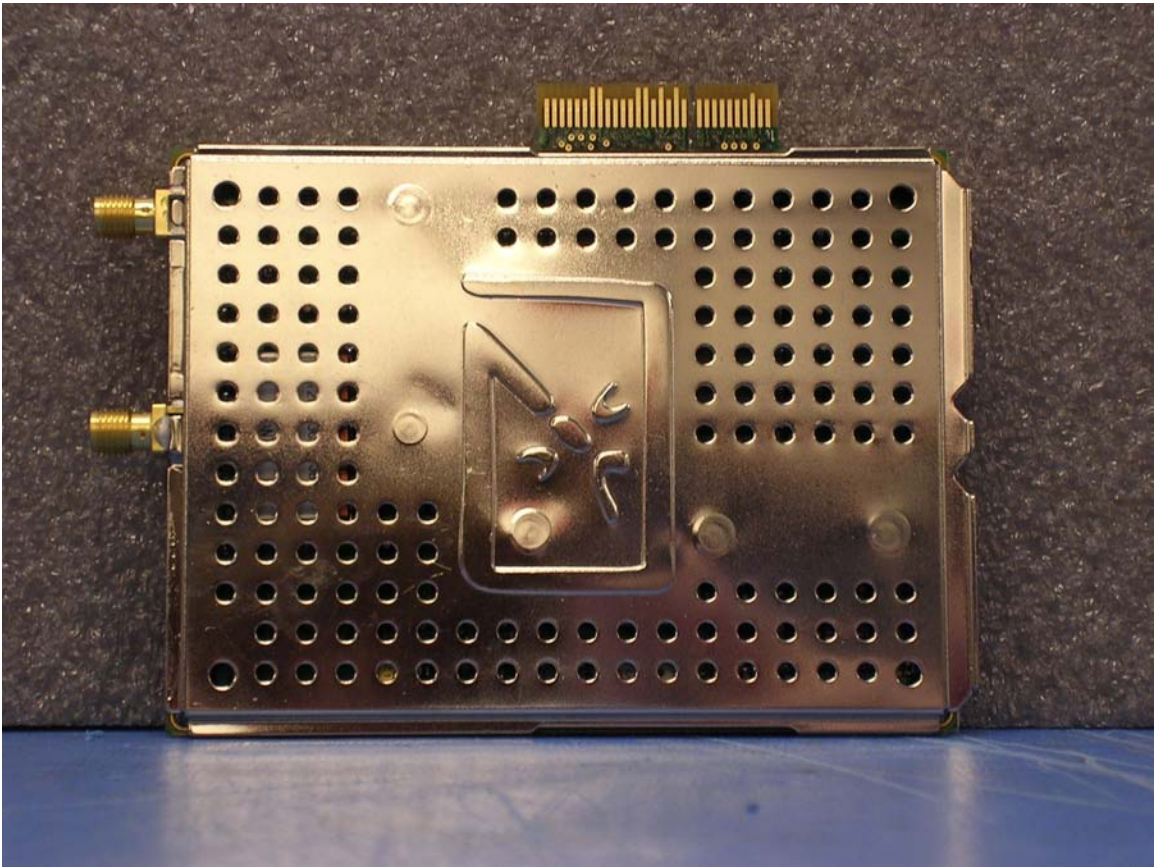




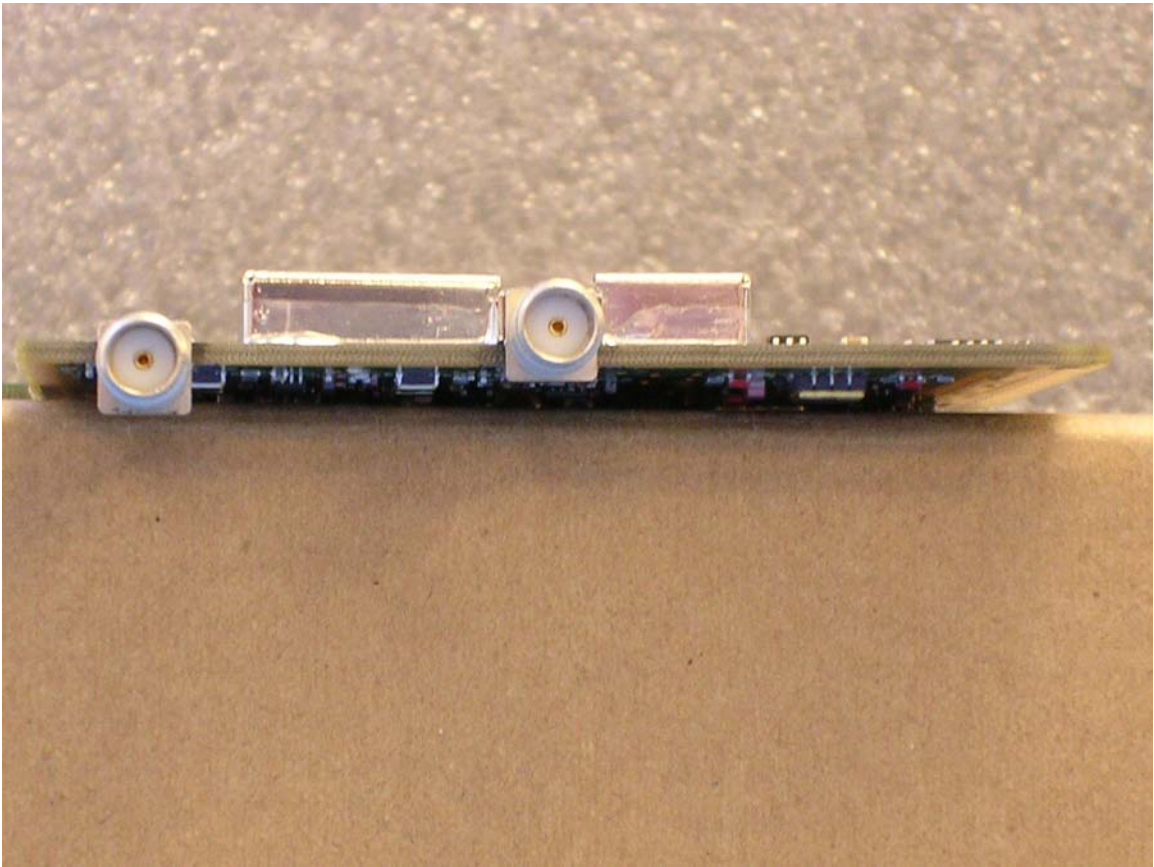
MCRB PCB Back



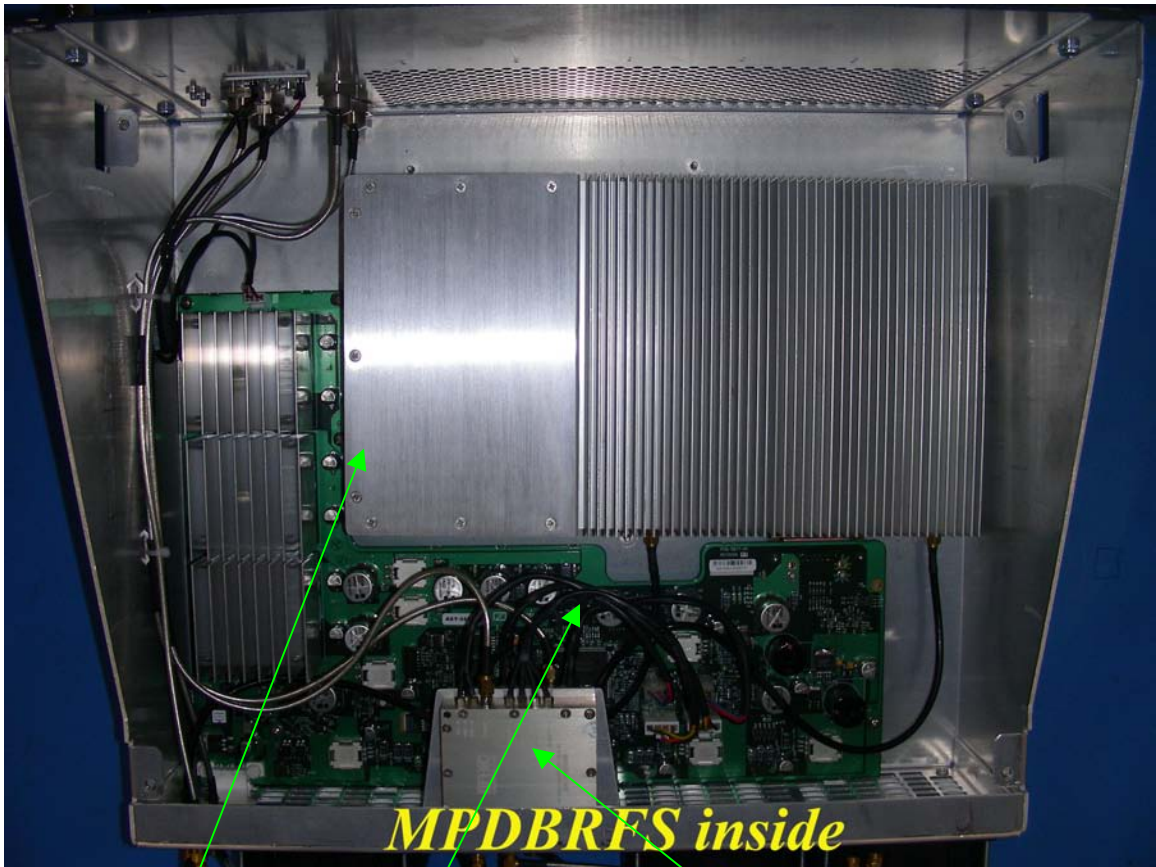
MCRB Front



MCRB Back

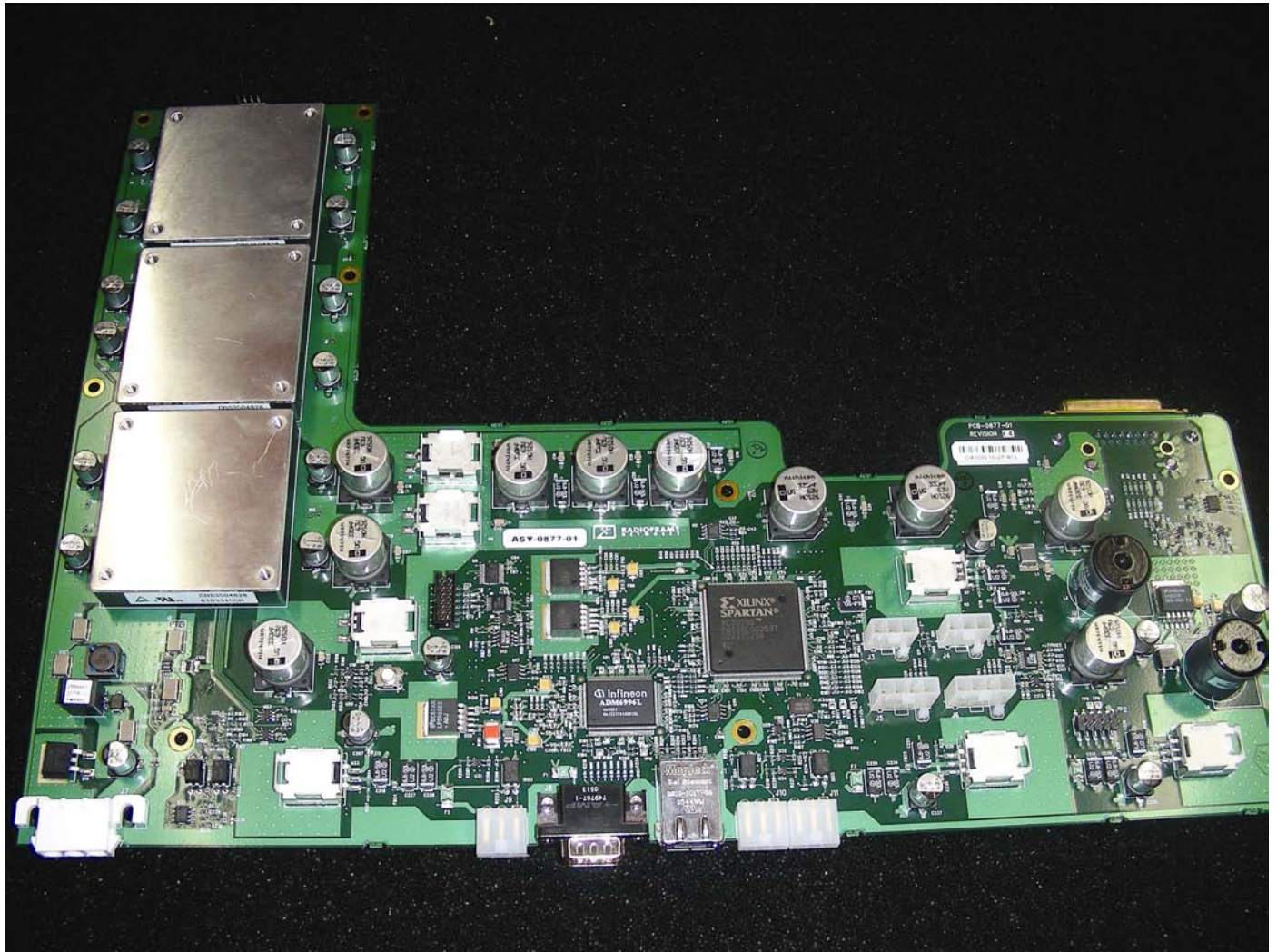


MCRB Connectors

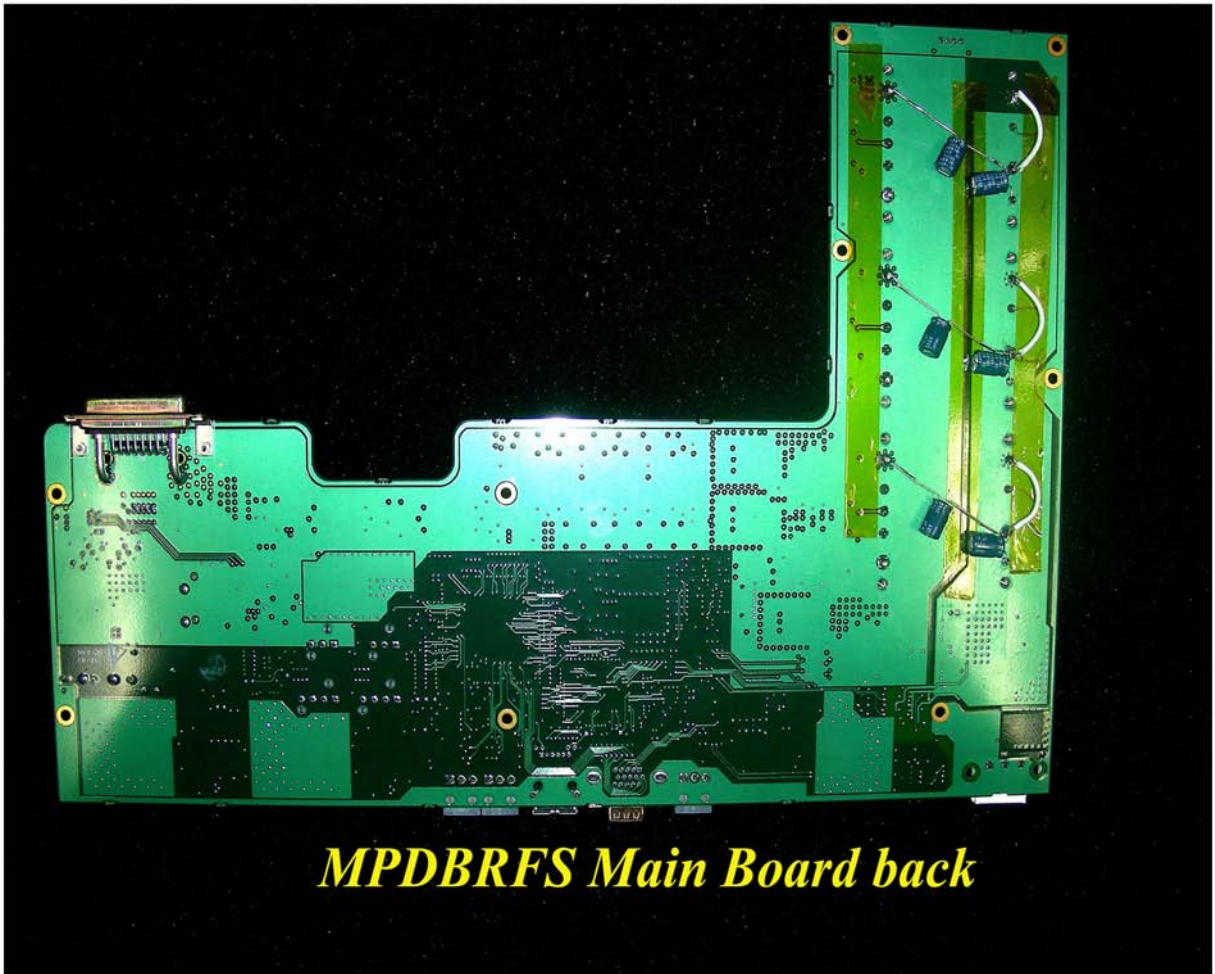


RF Shelf
Inside

Power Amplifier	Control Board	Low Noise Amplifier (Rx)
-----------------	---------------	--------------------------



PCB Front



PCB Back



MPDBRFS Main Board RF Connector

PCB RF Connector



PCB Front Connectors