

EXHIBIT 8  
EQUIPMENT PHOTOGRAPHS

This exhibit contains a series of digital photographs, as required by § 2.1033(c)(12) which reveal equipment construction and layout, including internal views showing component placement and chassis assembly.

Table E18.1. Equipment photographs—photo numbers and description.

Photo Number	Description
1	Top of Core Engine 1900 GSM Radio Module (shields removed)
2	Bottom of Core Engine 1900 GSM Radio Module (shields removed)
3	Top of Core Engine 1900 GSM Radio Module (shields in place)
4	Bottom of Core Engine 1900 GSM Radio Module (shields in place)



Photo 1. Top of Core Engine PCB (shields removed).

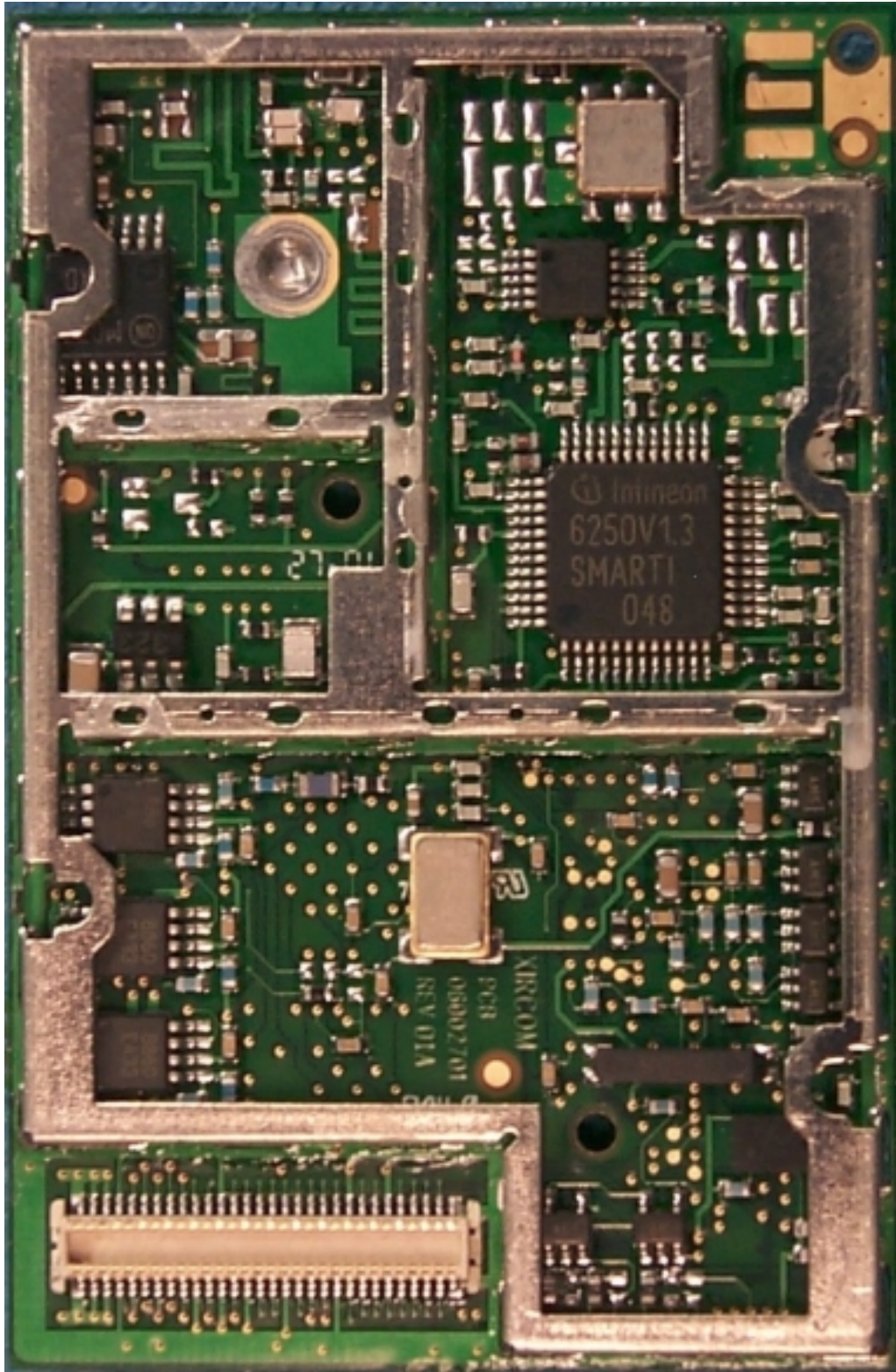


Photo 2. Bottom of Core Engine PCB (shields removed).



Photo 3. Top of Core Engine (shields in place).

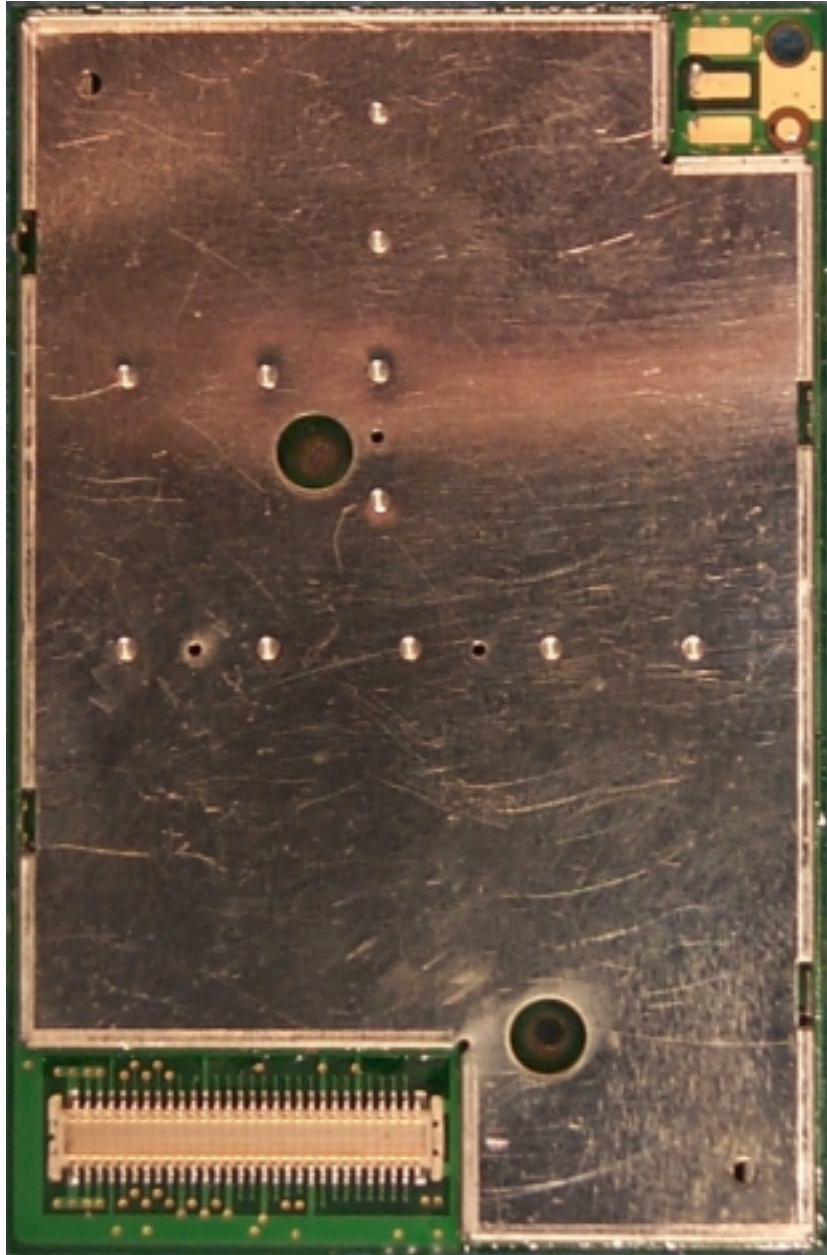


Photo 4. Bottom of Core Engine (shield in place).