

# Philips User's Guide

Bluetooth Compact Flash Card

November 2001



## Notice

Philips Electronics North America [Corporation] shall not be liable for technical or editorial errors or omissions contained herein. The information in this guide is subject to change without notice © 2001 Philips.

Except for use in connection with the accompanying Philips product, no part of this guide may be photocopied or reproduced in any form without prior written consent from Philips. Philips and the Philips logo are trademarks of Philips Electronics North America.

Microsoft, Windows, Windows NT, and other names of Microsoft products referenced herein are trademarks or registered trademarks of Microsoft Corporation. All other product names mentioned herein may be trademarks or registered trademarks of their respective companies.

Printed in U.S.A. This device complies with Part 15 of the FCC Rules. Operation is subject to the following two conditions. (1) This device may not cause harmful interference and (2) this device must accept any interference received, including interference that causes undesired operation. The following words and symbols mark special messages throughout this guide:

---

➤ **WARNING:** Text set off in this manner indicates that failure to follow directions could result in bodily harm or loss of life.

---

---

➤ **CAUTION:** Text set off in this manner indicates that failure to follow directions could result in damage to equipment or loss of information.

---

---

➤ **WARNING:** The radiated output power of *Bluetooth CF Card* is far below the FCC radio frequency exposure limits. Nevertheless, the *Bluetooth CF Card* shall be used in such a manner that the potential for human contact during normal operation is minimized.

---

User's Guide  
Bluetooth Compact Flash Card  
First Edition (September 2001)  
Philips Electronics NA.

## Table Of Content

<b>1</b>	<b>GETTING STARTED.....</b>	<b>5</b>
1.1	INTRODUCTION.....	5
1.1.1	Terminology.....	5
1.1.2	Supported Profiles.....	6
1.2	INSTALLING THE SOFTWARE.....	6
1.3	UN-INSTALLING THE SOFTWARE.....	7
1.4	LAUNCHING THE APPLICATION.....	8
1.5	THE MAIN WINDOW.....	11
1.5.1	Device Group Drop Down Menu.....	12
1.5.2	Device List.....	12
1.5.3	View Menu.....	12
1.5.4	Tools Menu.....	12
1.5.5	Search.....	13
1.5.6	Bluetooth Radio Icon.....	13
<b>2</b>	<b>DEVICE DISCOVERY.....</b>	<b>16</b>
2.1	THE SEARCH SCREEN.....	16
2.1.1	Device List.....	16
2.2	SEARCHING FOR DEVICES.....	17
2.2.1	Saving Devices.....	18
2.2.2	Device Information Dialog.....	19
2.2.3	Viewing Devices.....	20
2.3	COMMUNICATING WITH OTHER DEVICES.....	21
2.3.1	Send File.....	22
2.3.2	Send Business Card.....	24
2.3.3	Exchange Business Card.....	27
2.3.4	Connect to Serial Port.....	27
2.3.5	Connect for DialUp Access.....	27
2.3.6	Connect for LAN Access.....	28
2.3.7	Perform an ActiveSync session.....	28
2.3.8	Setting up the Host computer.....	28
2.3.9	Wireless ActiveSync.....	28
2.3.10	Create bond with this device.....	29
2.3.11	Remove bond with device.....	30
2.3.12	Remove this device.....	30
2.4	MOVING AND REMOVING DEVICES.....	30
<b>3</b>	<b>DEVICE GROUPS.....</b>	<b>31</b>
3.1	MODIFYING GROUPS.....	31
3.2	GROUP SETTINGS.....	33
3.2.1	General Tab.....	34
3.2.2	Connections Tab.....	35
3.2.3	File Sharing Tab.....	36
3.2.4	PIM Objects Tab.....	39
	Serial Port Tab.....	40
3.2.6	DialUp Tab.....	41
<b>4</b>	<b>SYSTEM DIAGNOSTICS.....</b>	<b>42</b>
4.1	LOOPBACK TEST.....	42

4.2	RESET BC01 TEST.....	43
4.3	VERSIONS.....	44
<b>5</b>	<b>APPENDIX - A .....</b>	<b>46</b>
5.1	TROUBLESHOOTING.....	46
<b>6</b>	<b>APPENDIX -B.....</b>	<b>48</b>
6.1	AGENCY REQUIREMENTS .....	48
6.1.1	Federal Communications Commission Notice.....	48
6.2	DECLARATION OF CONFORMITY FOR PRODUCTS MARKED WITH THE FCC LOGO - UNITED STATES ONLY .....	48
6.2.1	Canadian Notice.....	49
6.2.2	Avis Canadien.....	49
6.2.3	Japanese Notice .....	50
6.3	WIRELESS NOTICES .....	50
6.3.1	Canadian Regulatory Wireless Notice .....	50
6.3.2	European Union Notice .....	50
6.3.3	Japanese Notice .....	51

# 1 Getting Started

## 1.1 Introduction

Bluetooth wireless technology provides fast, reliable, and secure wireless communication in a small space, and enables you to synchronize your handheld PC with your desktop computer. Bluetooth wireless technology eliminates the need for cables between electronic devices such as desktop computers, printers and local area networks (LANs).

### 1.1.1 Terminology

Before you install and start using your new Bluetooth Compact Flash Card, please take a few minutes to review some of the terms that you will be seeing throughout the document.

- **Authentication:** Security feature that requires users to verify a numeric passkey before exchanging data.
- **Authorization:** Security feature that requires user approval before another user is allowed to share data.
- **Bluetooth Neighborhood:** Collection of Bluetooth devices.
- **Bonded Device:** Recognized by your device so as not to require Authentication or Authorization.
- **Device:** Bluetooth enabled device.
- **Device address:** Unique electronic address of a Bluetooth device.
- **Device discovery:** The location and recognition of one Bluetooth device by another.
- **Device group:** Compilation of several Bluetooth devices into a group, normally to conduct related tasks.
- **Device name:** Name that a Bluetooth device provides when discovered by another device.
- **PIM:** Personal Information Manager. Applications used to manage everyday business functions (for example, Contacts, Calendars, and Tasks).
- **Service Discovery:** Determines which applications other devices have in common with yours.

## 1.1.2 Supported Profiles

The services supported by your Bluetooth CF Card are defined as “Profiles”. Available Profiles include:

- Generic Access
- Service Discovery
- Serial Port
- LAN Access
- Dial-Up Networking
- Generic Object Exchange
- Object Push
- File Transfer
- Synchronization

Without the need of any cables or wiring, you can:

- Transfer files
- Access Dial-up networks
- Connect to local area networks
- Perform an ActiveSync session
- Connect to serial ports
- Exchange PIM data
- Send or exchange business cards

The basic functions of the Bluetooth Neighborhood include:

- Device Discovery
- Service Discovery
- Establishing links with remote devices

## 1.2 Installing the Software

This section contains instructions for installing the software required to use your new Bluetooth Compact Flash Card on a Handheld PC.

1. Remove any accessory from your Handheld PC.
2. Place the Handheld PC in its cradle and make an ActiveSync connection to your desktop or notebook computer.
3. Insert the Bluetooth Compact Flash Card installation CD into the CD tray of your desktop or notebook computer.
4. From the Windows Start menu on your base computer, select **start --> Run**, and type in x: Setup.exe (where x equals the letter of the CD-ROM drive) or browse to the Setup.exe file, then click OK.
5. Follow the on-screen instructions.
  - If you are prompted to uninstall files, follow the on-screen instructions. Once the uninstall is finished, begin again with step number one of this procedure.

6. If you cannot successfully load the application, then perform a factory reset of the Handheld PC. Refer to the Handheld PC user guide for more information on performing factory reset of the Handheld PC.
  - Ensure that your desktop or notebook computer and Handheld PC have completed all operations before exiting the setup.
7. When the install program is finished, remove the Handheld PC from its cradle and conduct a soft reboot by inserting the stylus in the hole in the bottom of the Handheld PC. Refer to the Handheld PC user guide for more information on rebooting the Handheld PC.
8. Insert the Bluetooth Compact Flash Card into the Handheld PC (See “Figure 1.1: Inserting Compact Flash Card.”). A new icon (the Bluetooth Radio con) should display at the bottom of the “Today” screen and the LED at the top of the Compact Flash Card should blink.



**Figure 1.1: Inserting Compact Flash Card.**

- The Bluetooth Radio icon is initially dark when the Handheld PC is inserted into the Wireless Pack and becomes brighter when it recognizes the software.

### **1.3 Un-installing the Software**

This section contains instructions for un-installing the software required to use your Handheld PC Bluetooth Compact Flash Card.

1. If inserted, remove the Bluetooth Compact Flash Card from your Handheld PC.
2. Place the Handheld PC in its cradle and make an ActiveSync connection to your desktop or notebook computer.

3. Insert the Bluetooth Compact Flash Card installation CD into the CD tray of your desktop or notebook computer.
4. From the Windows Start menu on your base computer, select **Start --> Run**, and type in **x:Setup.exe** (where x equals the letter of the CD-ROM drive) or browse to the Setup.exe file, then click OK.
5. Follow the on-screen instructions. When requested if you would like the wizard to un-install the Bluetooth device, select “Yes” and then click on “Next”.
6. Follow the on-screen instructions.

## 1.4 Launching the Application

The Bluetooth application is launched from the Handheld PC Today Screen. Select “Bluetooth Manager” either from the Start Menu (See “Figure 1-2: Launching the Bluetooth Manager from the Start Menu”) or from the Bluetooth Radio menu (See “Figure 1-3: Launching the Bluetooth Manager from the Bluetooth Radio Menu Icon”). Access the Bluetooth Radio menu by tapping on the Bluetooth Radio icon at the bottom of the Today Screen.

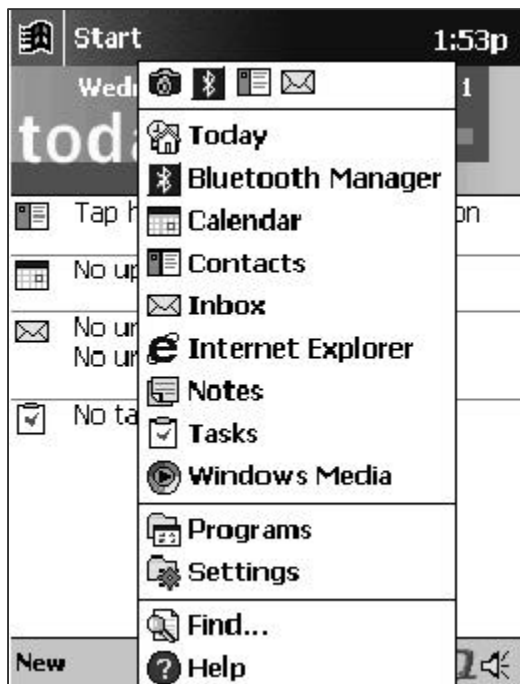


Figure 1-2: Launching the Bluetooth Manager from the Start Menu





**Figure 1.3: Launching Bluetooth Manager from Bluetooth Radio Icon Menu**

If you have no devices saved to your Handheld PC, a dialog box will prompt you to search for Bluetooth devices (See “Figure 1-4: Initial Search Prompt”).

- Choose **“Yes”** to display the Search screen and the Bluetooth Compact Flash Card begins searching for Bluetooth devices in the area.
- Choose **“No”** to jump to the main window without conducting any search.
- Choose **“Yes”** to initiate a search.



**Figure 1-4: Initial Search Prompt**

When the search is complete, the screen displays all devices that were found (See “Figure 1-5: Search Screen”).



**Figure 1-5: Search Screen**

You will now want to assign these devices to a Device Group. For information on Device Groups (see Chapter 3, “Device Groups”).  
For now:

1. Select those devices that you want to keep by selecting the individual check boxes.
2. Tap **“Save.”** The Device groups screen will appear (See **“Figure 1-6: Device Groups.”**).
  - Only **“All Devices, Home and Work”** appear until you add other groups to the list (see the section in Chapter 3, **“Modifying Groups”**). The **“All Devices”** group is automatically checked and always dimmed; it cannot be unchecked.
3. Tap **“Ok”** to save selected device(s) to the selected group(s) and to return to the Search screen.
4. Repeat for additional devices and/or groups.
5. Tap **“Ok”** to return to the main window.



**Figure 1-6: Device Groups**

## **1.5 The Main Window**

Following this initial device discovery session, the main window appears (See **“Figure 1-7: Main Window Controls.”**) listing saved Bluetooth devices. Following your initial search, it displays **“All Devices.”**

- The main window shows discovered devices, yet does not necessarily show all available devices within range. For the devices that have been discovered there is an indication in the status category of which one (s) are currently within range.

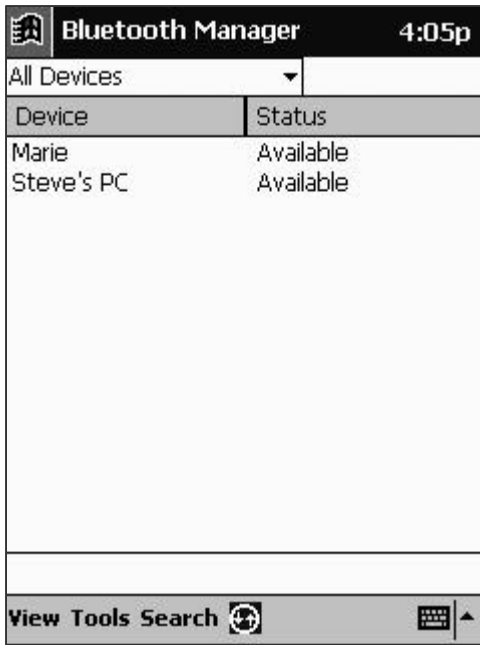


Figure 1-7: Main Window Controls

### 1.5.1 Device Group Drop Down Menu

The Device Group Drop Down Menu allows you to display devices found in a particular device group or in all groups (“All Devices”). This drop down menu also includes a selection for Adding, Editing, or Deleting a group (see the section in Chapter 3, “Modifying Groups”).

### 1.5.2 Device List

The Device List displays those devices (for example, other Handheld PC’s, laptops, etc.) recognized by your Handheld PC. The availability of each device is displayed in the status column of the list view or indicated by the display of the icon.

### 1.5.3 View Menu

The View Menu allows you to toggle your view of devices from Icons to List format. This menu also allows you to refresh the status of devices being viewed (see the section in Chapter 2, “Viewing Devices”).

### 1.5.4 Tools Menu

The Tools Menu allows access to dialog screens for group settings (see the section in Chapter 3, “Group Settings”) and system diagnostics (see Chapter 4, “System Diagnostics”).

## 1.5.5 Search

Tapping Search launches the Search screen (see the section in Chapter 2, “The Search Screen”).

## 1.5.6 Bluetooth Radio Icon

Once the Bluetooth application has been started, you can view the Bluetooth Radio Icon at the bottom of the Today screen (See “Figure 1.8: Today Screen.”) or at the bottom of the main Bluetooth Main Window (See “Figure 1.9: Bluetooth Main Window.”).

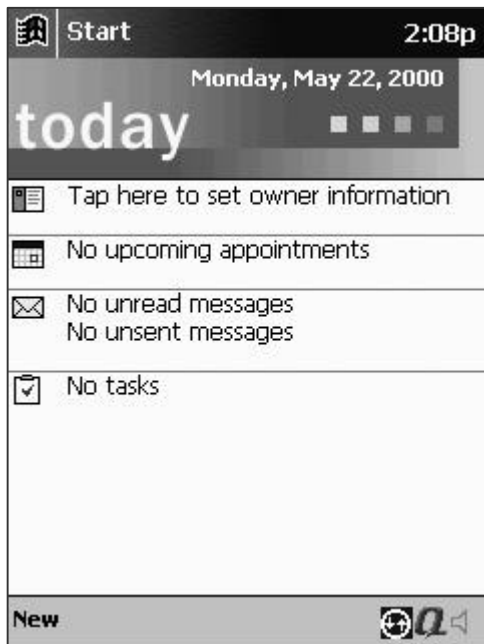
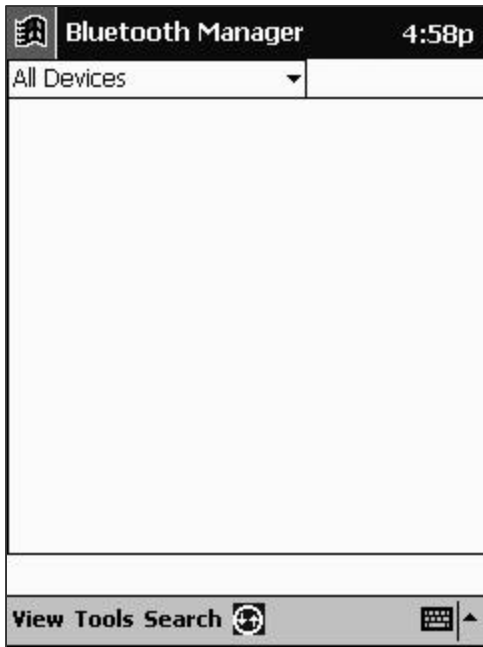


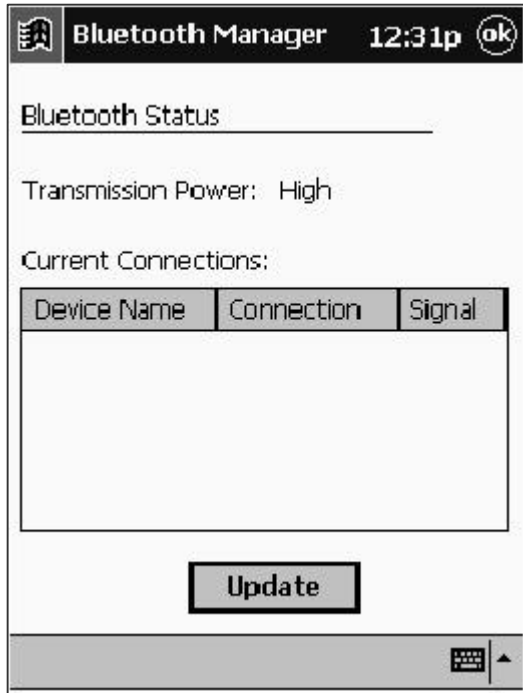
Figure 1.8: Today Screen



**Figure 1.9: Bluetooth Main Window**

From the bottom of the Today Screen you can:

- Check to be certain that the radio was on initially.
- Turn the Radio On or Off—Select to toggle the radio.
- Launch the Bluetooth Manager application.
- Initiate a wireless ActiveSync session (see the section in Chapter 2, “Perform an ActiveSync session”).
- View the current status of the Radio and current connections (See “Figure 1-10: Radio Status.”).



**Figure 1-10: Radio Status**

Tap-and-hold any device in the current connections list of the “Current Status” window to open a menu that allows you to close the connection.

- Obtain version information “About” the Bluetooth Manager.

## 2 Device Discovery

### 2.1 The Search Screen

The search screen (See “Figure 2-1: Search Screen.”) allows you to search for devices and assign them to device groups. To open the search screen, tap “**Search**” at the bottom of the main window. The Bluetooth Compact Flash Card will automatically begin searching for Bluetooth devices. When it finishes searching, the screen displays a device list.



Figure 2-1: Search Screen

#### 2.1.1 Device List

Presented in tabular format, the device list displays devices found during the search. The list can be sorted by either Device Name or Type by tapping the respective header.

1. A checkbox is provided to allow selection of individual or multiple devices for saving to groups.
2. The “New” column will be marked with an asterisk “\*” if the found device is not already saved.
  - **Search button**—Launches the search for devices (see the section in this chapter, “Searching for Devices”).
  - **Save button**—Allows you to save devices to device groups (see the section in this chapter, “Saving Devices”).
  - **Filter button**—Launches the search filter screen (See “Figure 2-2: Search Filter.”). Allows you to tailor your search to specific devices. “Find all devices” is initially selected by default. This screen also allows you to specify the duration of a search.



- 
- If “Stop searching after” is left unchecked, searches will continue until you terminate the search by tapping “Stop.”
- 

- **Search Status Line**—Text string located at the bottom of the search screen that displays the status of the search. This status line also tells you how many devices were found during the search.



**Figure 2-2: Search Filter**

## 2.2 Searching for Devices

Your initial search was conducted when you first launched the application (see the section in Chapter 1, “Getting Started”). It is always possible to conduct a new search for Bluetooth devices.

1. At the bottom of the main window, tap “**Search.**” The search screen appears (See “Figure 2-1: Search Screen.”) and the Bluetooth Compact Flash Card begins to search for Bluetooth devices in the area. The devices appear on the screen as they are found (See “Figure 2-3: Searching for Bluetooth Devices.”).

- The “Search” button changes to “Stop” while the search is in progress and changes back to “Search” when the search is complete (times out) or when you tap “Stop.”



**Figure 2-3: Searching for Bluetooth Devices**

### 2.2.1 Saving Devices

Once a device is discovered and you decide that you want to save it for future use, it should be saved to a Device group. The procedure is identical to that used when you conducted your initial search except that you may now have more Device groups to choose from.

1. From the Search Screen, select those devices that you want to keep by tapping the respective checkboxes.
2. Tap “**Save.**” The Device groups screen appears (See “Figure 2-4: Device Groups.”).
3. Check the box next to any of the groups that you want to save these devices to.
  - You can check one or several groups. You can modify the groups prior to making your selection by tapping the “Add Group” button (see the section in Chapter 3, “Modifying Groups”).
4. Tap “**Ok**” to save the devices to the indicated groups and return to the Search screen.
5. Repeat for additional devices.
  - Whenever you save a device to any group, it is also saved to the “All Devices” group.

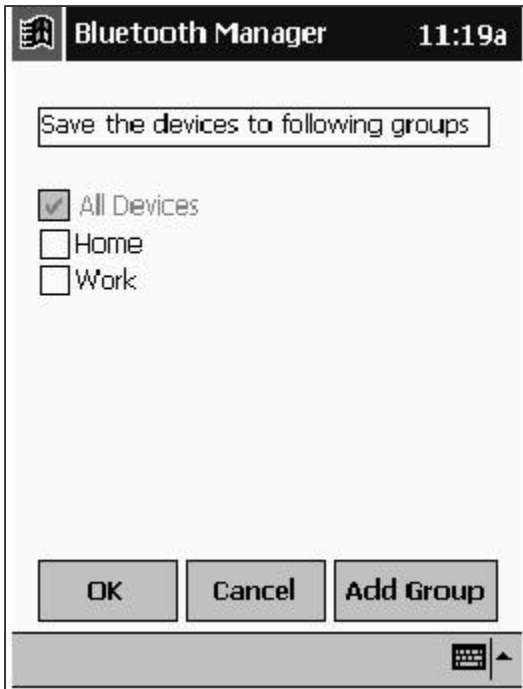


Figure 2-4: Device Groups

## 2.2.2 Device Information Dialog

Access the Device Information Dialog from the main window by tapping a device (See “Figure 2-5: Device Information.”).



Figure 2-5: Device Information

- **Device Name**—Name assigned by owner of selected device.
- **Device Address**—Unique Bluetooth address used to identify the device.
- **Device Type**—Identifies the type of device (for example, PDA, cell phone, etc.)
- **Device Bonded**—Displays “Yes” if a bond has been established. Bonding allows the device to bypass authorization and authentication. A bond can be created or broken via the “Actions” menu located at the bottom of the Device Information screen.
- **Last Seen**—Indicates the last date and time the device was discovered near your device.
- **ActiveSync Partner checkbox**—Active only for laptop or desktop computers. Check this box to indicate that you wish to use this device as an ActiveSync partner.
- **Show Device Groups**—Tap here to review or specify which groups this device belongs to (see the section, “Moving and Removing Devices” in this chapter).
- **Actions Menu**—Allows you to initiate an action with the selected device (for example, send a business card) (see the section in this chapter, “Communicating With Other Devices”).

### 2.2.3 Viewing Devices

Devices can be viewed in two different formats, Icons and List. The “View” menu (See “Figure 2-6: View Menu (Icon View).”) allows you to select either of these views. It also allows you to refresh the screen.

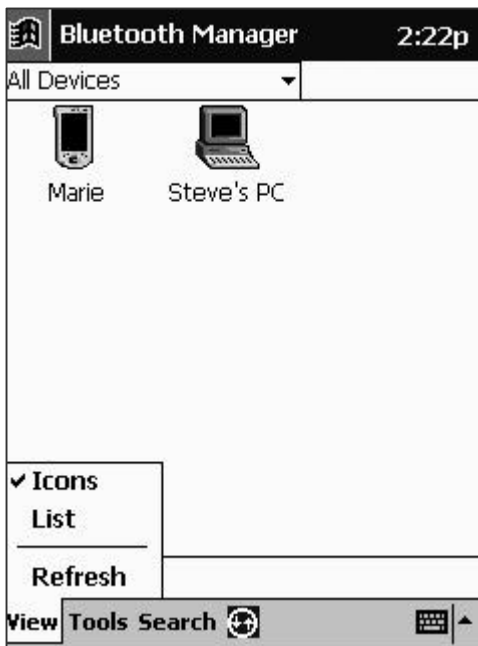


Figure 2-6: View Menu (Icon View)

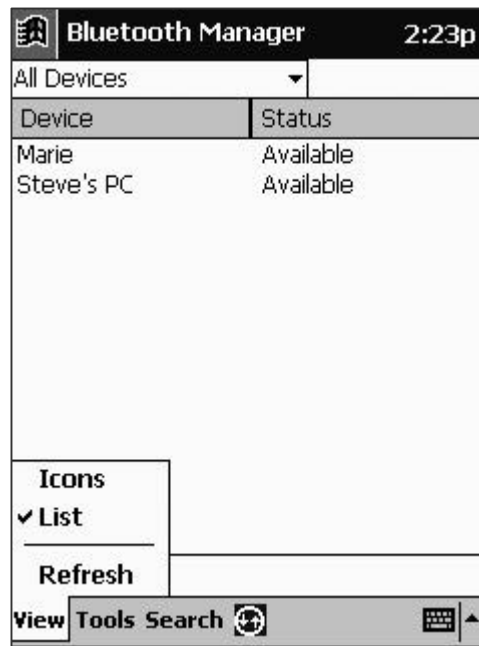


Figure 2-7: View Menu (List View)

- **Icon View** (See “Figure 2-6: View Menu (Icon View).”) —Presents you with a graphical representation of the device (for example, Computer, Access Point, Cell Phone, etc.). The device name, assigned by the owner of the device, appears below the icon.
- **List View** (See “Figure 2-7: List View.”)—Provides the same information as the Icon View, only in tabular form. The left column displays the device name and type. The right column tells you the current status of the device (for example, Connected, Available, Unavailable).
- **Refresh**—Updates the status and availability of each displayed device.

## 2.3 Communicating With Other Devices

Once you have established contact with a device, you can exchange data.

You can:

- Send a file.
- Send or exchange contacts, calendar, and tasks.
- Perform an ActiveSync session.
- Connect for DialUp or LAN access.
- Connect to serial port.
- Create or remove bonds.

You can establish communication from the Main Window or the Device Information Dialog Window.

From the Main Window: Tap-and-hold the device you want to communicate with; you are presented with a list of services that the selected device supports (See “Figure 2-8: Communicating with other devices.”).

Or from the Device Information Dialog Window: Select the “Actions” menu (See “Figure 2-9: The Actions Menu.”).

---

➤ Services will only be displayed if the selected device is discoverable.

---

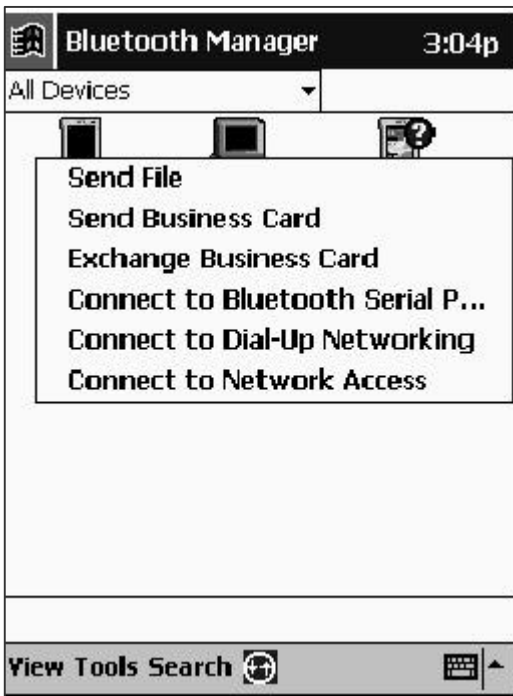


Figure 2-8: Communicating with other devices

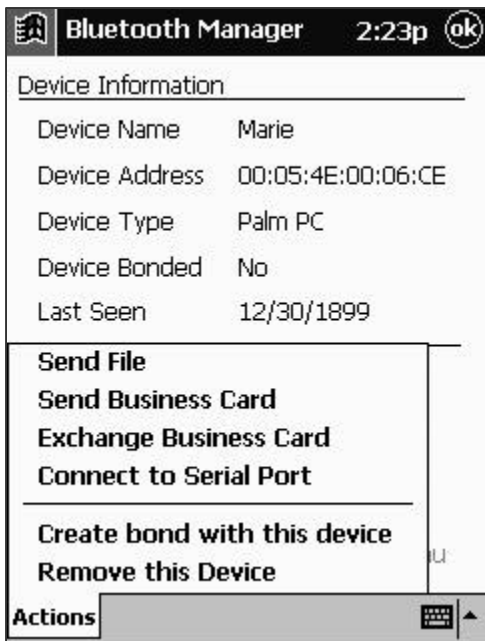


Figure 2-9: The Actions Menu

### 2.3.1 Send File

- Allows you to send a file to another device.

1. Discover the available services of the device that you want to send a file to.

---

➤ In the main window, tap and hold the device. In the device information dialog window, select via the actions menu.

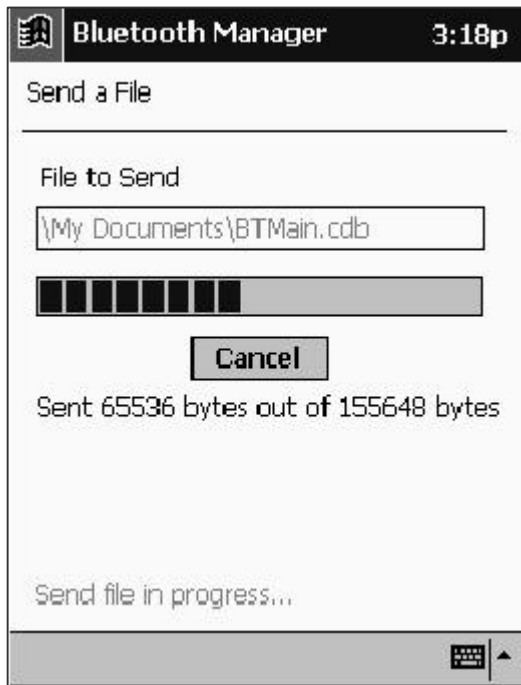
---

2. Select “Send File.” The “Send a File” screen appears (See “Figure 2-10: Send a File.”).



**Figure 2-10: Send a File**

3. Specify the file that you want to send by entering its location and name in the window or by selecting the file from the “Browse...” menu.
4. Tap “**Send**” to transfer the file or “**Cancel**” to abort the operation. Transfer progress is displayed (See “Figure 2-11: Send a File (Transmitting).”). Send button is dimmed initially and it is enabled only when the user selects the file to be send.



**Figure 2-11: Send a File (Transmitting)**

## 2.3.2 Send Business Card

- Allows you to send your business card information to another device.

### 2.3.2.1 From Main Window

1. Discover the available services of the device that you want to send a business card to.

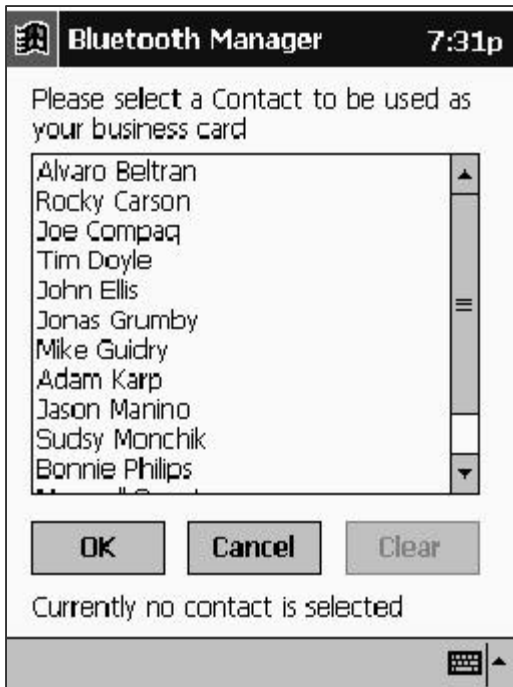
- 
- In the main window, tap and hold the device. In the device information dialog window, select via the actions menu.

2. Select “Send Business Card.”

3. If you have not set up your business card information (see the section in Chapter 3, “PIM Objects”), you will be prompted to select a contact name from your contact database (See “Figure 2-12: Please select a Contact Name.”). Select a contact name and tap “**Ok**” or tap “**Cancel**” to set up your business card information.

- 
- Once you select a contact name for business card transfer, that contact will remain the default until it is changed (see the section in Chapter 3, “PIM Objects”).
-





**Figure 2-12: Please select a Contact Name**

- 
- The success or failure of the transfer will be displayed.
- 

### **2.3.2.2 From the Contacts Dialog**

- Business card can also be sent directly from the Contacts list.

In the Start Menu, select Contacts.

1. Tap & Hold on the Contacts item which you want to send to other device (See “Figure 2.13: Contacts Dialog.”) or select the Contacts item & press Tools (See “Figure 2.14: Contacts Tools Menu.”).
  2. Select “Send Via Bluetooth”. A search dialog appears on the screen (See “Figure 2.15: Search Dialog.”).
    - “Detail” Button in the Search Dialog gives the details of the transaction.
    - “Refresh” Button in the Search Dialog refreshes the device list.
  3. Select the Device to which you want to send the Business card and press Send.
- 

- The success or failure of the transfer will be displayed for the current group.

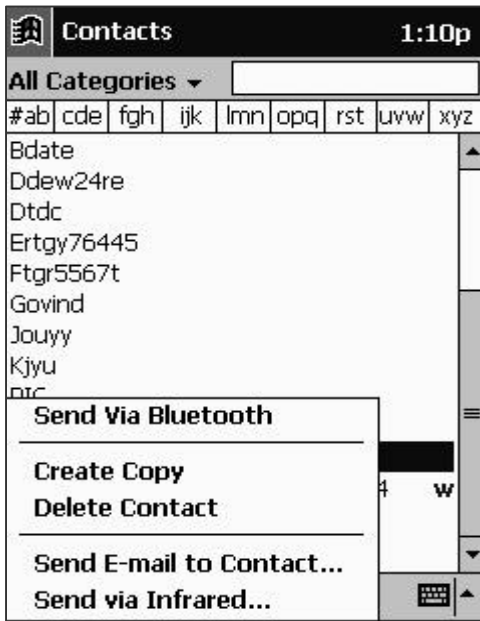


Figure 2.13: Contacts Dialog



Figure 2.14: Contacts Tools Menu



Figure 2.15: Search Dialog

➤ The above steps mentioned are true for Calendar & tasks also.

### 2.3.3 Exchange Business Card

- Allows you to exchange business card information with another device. This function works the same as when sending your business card with the exception that, if available, you will also receive the other device's information directly into your contacts database.

### 2.3.4 Connect to Serial Port

- Allows you to connect to another device's virtual Bluetooth serial port to utilize certain applications and hardware.

### 2.3.5 Connect for DialUp Access

- When viewed on Handheld PC 2002, this menu item is titled "Set as Internet Dial-Up connection".

- Allows you to connect wirelessly to Bluetooth equipped cell phones and modems. You will first be prompted to choose or create a dialup connection with basic dialing information (See "Figure 2-16: DialUp Information."). Once connected to a device with dialup capability, you may be requested to provide additional information. Refer to the user guide that came with your Handheld PC for more information on DialUp connections.

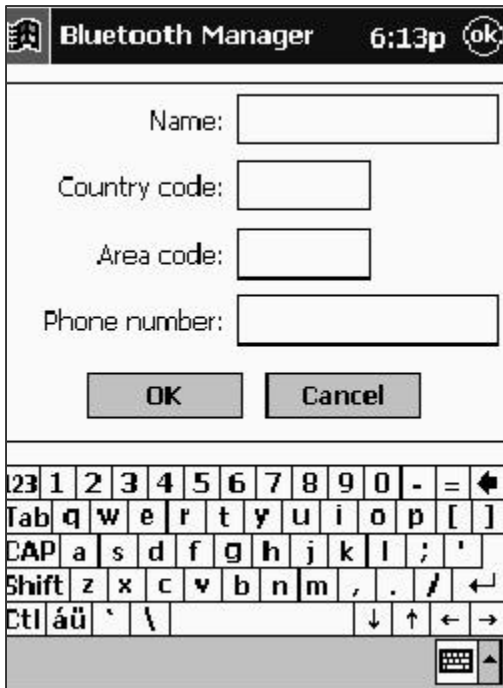


Figure 2-16: DialUp Information

### 2.3.6 Connect for LAN Access

---

- When viewed on Handheld PC 2002, this menu item is titled “Set as internet LAN connection”.
- 

- Allows you to connect to Bluetooth devices that are already participating in a Local Area Network (LAN). Once connected, you will be able to participate in the LAN for accessing services like Internet Access.

### 2.3.7 Perform an ActiveSync session

- Allows you to connect to and automatically update information with a Bluetooth device that has been designated as an ActiveSync partner.

#### 1. Setting up the Host computer.

---

- Only a laptop or desktop computer (Host PC) can be designated as an ActiveSync partner.
- 

- Using the serial or USB connection, manually establish an ActiveSync partnership as described in the user guide that came with your Handheld PC.
- 

- You can establish a partnership with more than one device; however, your device will initiate ActiveSync with the first partnered device that is discovered.
- 

- Run the Bluetooth Configuration Utility on the Host PC to determine which COM Port is configured for local serial service. Refer to the Bluetooth user documentation that came with your host PC for information on running the configuration utility.

- Open the ActiveSync window on the Host PC. Select File/Connection Settings... and configure it only to monitor the COM Port identified in step 2 above. Disable USB and Ethernet.

#### 2. Wireless ActiveSync

- Discover and save the Host PC to one or more of your Groups.
- Tap on the ActiveSync Host PC to display “Device Information” and check the “ActiveSync partner” checkbox (See “Figure 2-17: ActiveSync Partner.”).
- Initiate ActiveSync via the Bluetooth Radio icon located at the bottom of the Today screen.
- Follow on-screen instructions.



**Figure 2-17: ActiveSync Partner**

### 2.3.8 Create bond with this device

- (Found only in the “Actions” menu)—Allows you to establish a bond with another device to allow uninterrupted exchange of data.
1. Tap on the device that you want to bond with to display the device information dialog.
  2. Select “Create bond with this device” from the “Actions” menu. A screen will appear asking you to enter a PIN code (See “Figure 2-15: PINCODE REQUESTED.”).



**Figure 2-18: PINCODE REQUESTED**

3. Enter the PIN code that you and the owner of the selected device have agreed to.
4. Tap **“Ok.”** The owner of the selected device will be prompted to enter the same PIN code.

A status screen will appear indicating the success of the bond.

### 2.3.9 Remove bond with device

- (Found only in the “Actions” menu)—Allows you to remove a bond.
1. Tap on the device that you want to remove the bond to display the device information dialog.
  2. Select **“Remove bond with device”** from the actions menu.

### 2.3.10 Remove this device

- Allows you to remove a device from your database of discovered devices.
1. Tap on the device that you want to remove to display the device information dialog.
  2. Select **“Remove this device”** from the actions menu.

---

➤ A dialog prompts you to confirm your action.

---

You are returned to the main window. The selected device no longer exists in any of your groups.

## 2.4 Moving and Removing Devices

You can move a device between or remove a device from any group except “All Devices.”

---

➤ You can only remove a device from “All Devices” by removing the device from your database (see “Remove this device” in this chapter).

---

1. Tap on the device to display the Device Information window (See “Figure 2-5: Device Information.”).
2. Tap the **“Show Device Groups”** button to display the Device Groups screen (See “Figure 2-4: Device Groups.”)

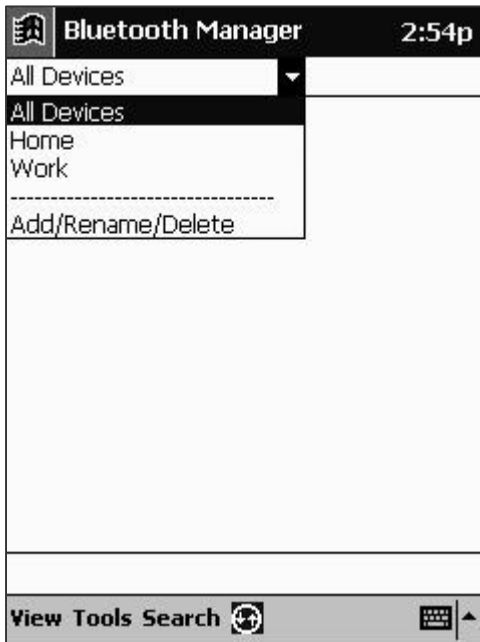
3. Check those groups where you want the device to appear and uncheck those where you do not.

### 3 Device Groups

Three empty device groups named “All Devices,” “Home,” and “Work” are provided when you install the Bluetooth software. All discovered Bluetooth devices are stored in the “All Devices” group when saved. “All Devices” cannot be renamed or deleted.

#### 3.1 Modifying Groups

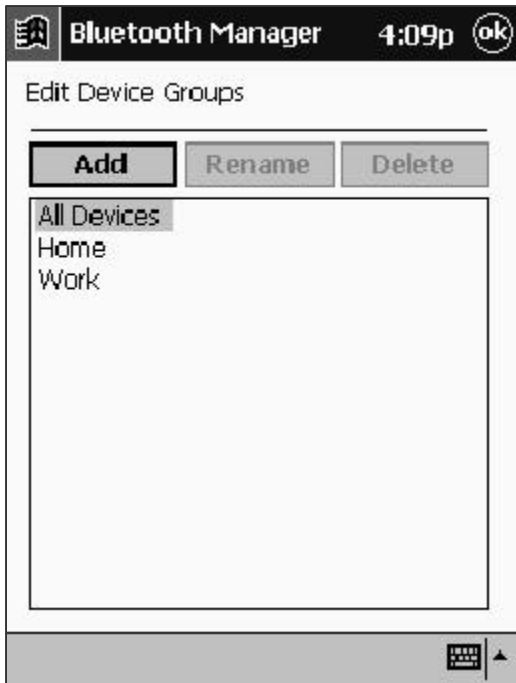
It is possible to Add, Rename or Delete items on your Group List. From the main window, select “Add/Rename/Delete” from the Group List Pull Down (See “Figure 3-1: Modifying Groups.”).



**Figure 3-1: Modifying Groups**

Or from the “Device Information” screen, tap the “*Show Device Groups*” button and then the “**Add Group**” button.

The “Edit Device Groups” screen appears (See “Figure 3-3: Edit Device Groups.”), displaying all current Device Groups.



**Figure 3-3: Edit Device Groups**

**To Add a Group:**

1. Tap the **“Add”** button. Another group titled **“New Group”** is appended to the list.
2. Select the **“New Group”** text and type in the desired group name.
3. Tap the return key.

**To Rename a Group:**

1. Select the text of the group you want to rename and tap the **“Rename”** button.
2. Type in the desired group name.
3. Tap the return key.

**To Delete a Group:**

1. Select the group you want to delete.
2. Tap the **“Delete”** button.

---

➤ A dialog prompts you to confirm your action.

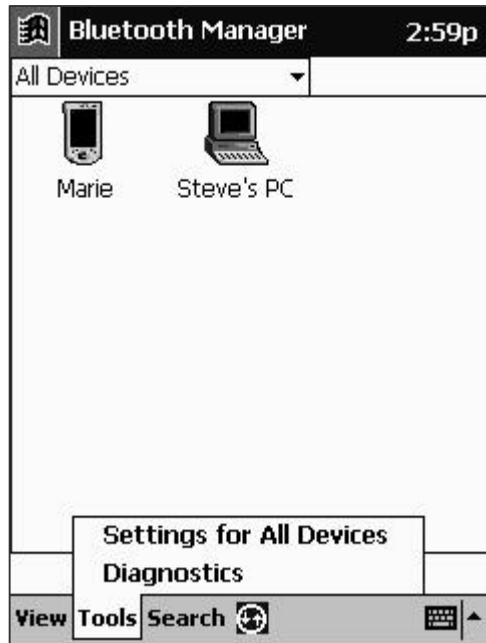
---

3. Tap **“Yes”** to delete the group or **“No”** to abort.



## 3.2 Group Settings

Access Group Settings by selecting “Settings for <group>” from the “Tools” menu in the main window (See “Figure 3-4: Selecting Settings for <group>.”).



**Figure 3-4: Selecting “Settings for <group>”**

These settings provide the group certain information about your device, as well as specify how it interacts with the rest of the group. The group settings are distributed among six different tabs

(See Figure 3-5: General Tab.”). You can change the group that you are modifying from any tab. Shifting groups or tabs automatically saves data.

### 3.2.1 General Tab



**Figure 3-5: General Tab**

- **Device Name**—This is the name that other Bluetooth device users see when they discover to your device.
- **Default Passkey** (Blank by default)—Used for authenticating connections requested by other devices for transactions that need a “Passkey” (see other service tabs for passkey requirements). The other user must know your passkey to complete the transaction. If left blank, you will be requested to enter a passkey every time that one is required.
- **Delete inactive devices--** (Found only under “All Devices”) Determines how long any device remains in the group between discoveries. You can specify the number of days Device Groups that the system uses (the default is 30 days). If the checkbox is left unchecked, devices are never automatically deleted from the group.

### 3.2.2 Connections Tab



**Figure 3-6: Connections Tab**

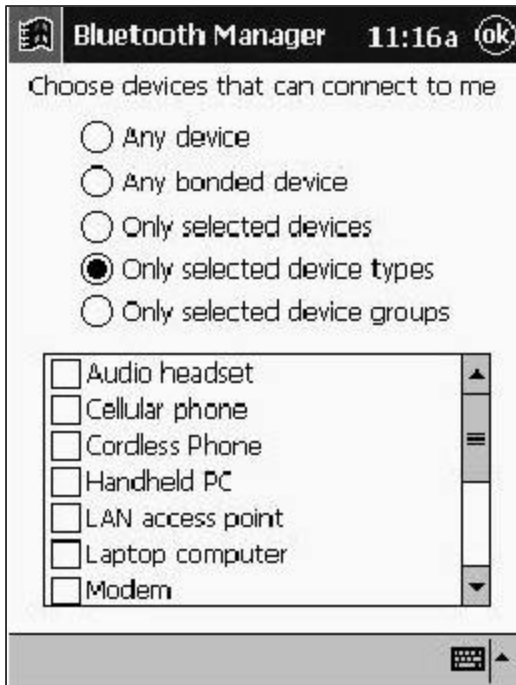
- **Let other devices see me** (Checked by default)—Check this box to allow other devices to locate your device in a search.

---
- This will not prevent devices that have previously discovered your device from conducting a transaction since they already know your Bluetooth address.

---
- **Let other devices connect to me** (Checked by default) —Check this box to allow other devices to connect and conduct transactions. If unchecked, no other device can initiate a connection with your device.

---
- This checkbox has no affect on outgoing connection requests.

---
- Use the “**Choose devices...**” dialog (See “Figure 3-7: Choose Devices.”) to specify what kind of devices you want to allow to connect to your device.



**Figure 3-7: Choose devices Dialog**

- **Transmission power for this group**—Allows you to choose the transmission power level that is used whenever the group is selected. Selection of this power level determines the transmission range (and therefore power consumption) of your device.

### 3.2.3 File Sharing Tab



**Figure 3-8: File Sharing Tab**

- **Let other devices use this service** (Checked by default) —Check this box to allow other devices to connect for file sharing. If unchecked, you can still connect with other devices and send them files.
- **Authorization required** (Checked by default)—Check this box if you want to screen any unbonded devices prior to allowing a transaction. If checked, you will be prompted to “accept” or “reject” transactions by any unbonded devices (See “Figure 3-9: Authorization Dialog.”).
- **Passkey is required** (Unchecked by default)—Check this box to require authentication for file sharing. If checked, you will be prompted to “accept” or “reject” transactions by any unbonded devices (See “Figure 3-10: Passkey Required.”). Unbonded devices will be required to supply a matching passkey.



**Figure 3-9: Authorization Dialog**



Figure 3-10: Passkey Required Dialog

- **Encryption is required**—Enabled only when you check “Passkey is required.” Check this box to enable data encryption when transmitting data.
- **Shared Directory**—Displays the name and the path of the folder used to store files received from other devices.

### 3.2.4

### 3.2.5 PIM Objects Tab



Figure 3-11: PIM Objects Tab

- **Let other devices use this service** (Checked by default)—Check this box to allow other devices to connect for transferring PIM objects. If unchecked, you can still connect with other devices and send them files.
- **Authorization required** (Checked by default)—Check this box if you want to screen any unbonded devices prior to allowing a transaction. If checked, you will be prompted to “accept” or “reject” transactions by any unbonded devices (See “Figure 3-9: Authorization Dialog.”).
- **Passkey is required** (Unchecked by default)—Check this box to require authentication for transferring PIM objects. If checked, you will be prompted to “accept” or “reject” transactions by any unbonded devices (See “Figure 3-10: Passkey Required.”). Unbonded devices will be required to supply a matching passkey.
- **Encryption is required**—Enabled only when you check “Passkey is required.” Check this box to enable data encryption when transmitting data.
- **Send my business card on request**—Allows other devices that are able to connect to “Pull” your business card information.
- **Accept all PIM objects sent to me**—Allows other devices that are able to connect to send you PIM objects.
- **Use this contact for my business card**—Displays the name being used when you transfer a business card to other Bluetooth devices. The “Browse” button allows you to change

business card information by selecting from the full list of contacts in your Pocket Outlook database. If an Outlook contact is not available, then the data found in “My Information” of the device is used to form contact information. If the user deletes the contact entry, a runtime message appears the next time you attempt to send a business card.

### 3.2.6 Serial Port Tab

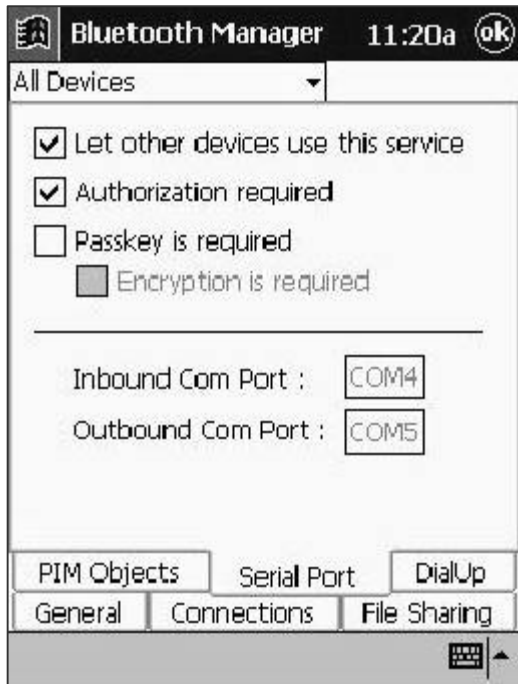


Figure 3-12: Serial Port Tab

- **Let other devices use this service** (Checked by default) —Check this box to allow other devices connect via the serial port. If unchecked, you can still connect with other devices.
- **Authorization required** (Checked by default)—Check this box if you want to screen any unbonded devices prior to allowing a connection via the serial port. If checked, you will be prompted to “accept” or “reject” transactions by any unbonded devices (See “Figure 3-9: “Authorization Dialog.”).
- **Passkey is required** (Unchecked by default)—Check this box to require authentication for connections via the serial port. If checked, you will be prompted to “accept” or “reject” transactions by any unbonded devices (See “Figure 3-10: Passkey Required.”). Unbonded devices will be required to supply a matching passkey.
- **Encryption is required**—Enabled only when you check “Passkey is required.” Check this box to enable data encryption when transmitting data.
- **COM ports**—Identify the virtual COM (Communications) ports associated with a Bluetooth serial port connection. The Inbound COM port is used when other devices initiate a serial connection to the Bluetooth Compact Flash Card. The Outbound COM port is used when you initiate a serial connection to other devices.



### 3.2.7 DialUp Tab



**Figure 3-13: DialUp Tab**

- **Passkey is required** (Unchecked by default)—Check this box to require authentication for connections via Dialup. If checked, you will be prompted to “accept” or “reject” transactions by any unbonded devices (See “Figure 3-10: Passkey Required.”). Unbonded devices will be required to supply a matching passkey.
- **Encryption is required**—Enabled only when you check “Passkey is required.” Check this box to enable data encryption when transmitting data.
- **Using COM Port**—Identifies the virtual BTC (Bluetooth Communications) port that will be used when you initiate a Dialup connection with another device.

## 4 System Diagnostics

You can conduct basic checks of the hardware utilizing either the Loopback Test or the Reset BC01 Test. Both can be accessed via the Diagnostics screen.

### 4.1 Loopback Test

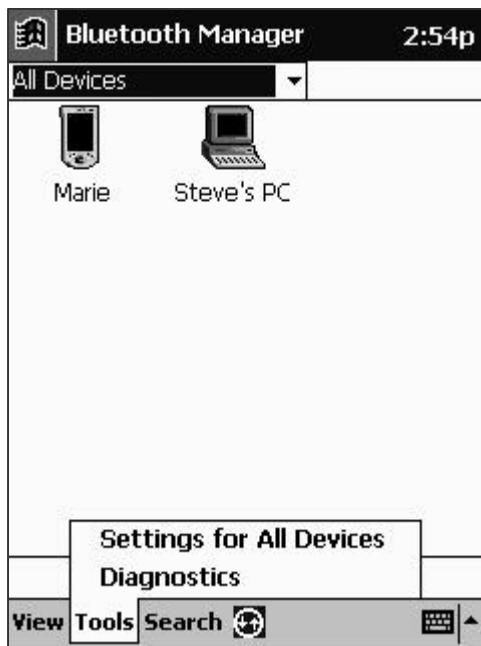
---

➤ If you select to run the Loopback Test or any other diagnostic test, the Handheld PC will soft reset.

---

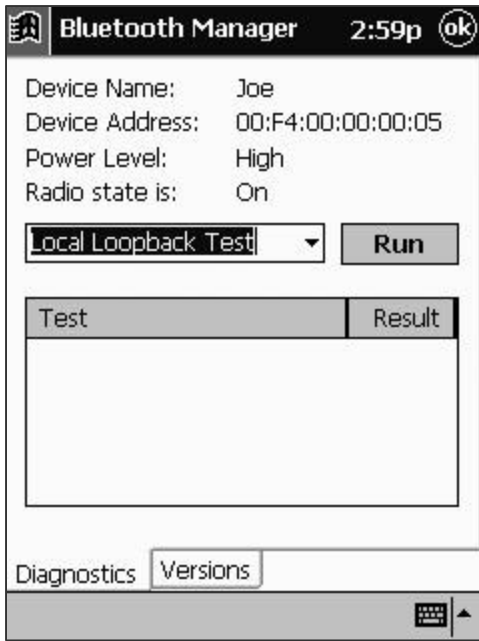
▪ Tests the way that your device internally processes data.

1. Select “Diagnostics” from the Tools menu at the bottom of the main window (See “Figure 4-1: Tools Menu.”).



**Figure 4-1: Tools Menu**

2. Select “Local Loopback Test” from the pull down menu and tap the “Run” button (See “Figure 4-2: Local Loopback Test.”).

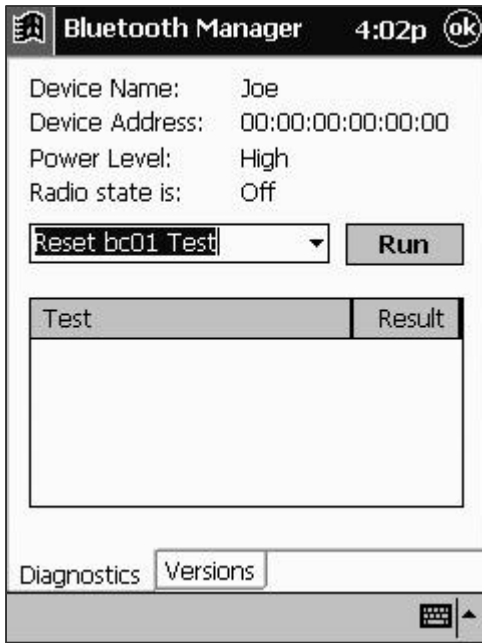


**Figure 4-2: Local Loopback Test**

The Diagnostics screen will display the result of the test (Pass or Fail).

## 4.2 Reset BC01 Test

- Re-initializes (resets) the radio circuitry used to transmit and receive data.
1. Select “Diagnostics” from the Tools menu at the bottom of the main window (See “Figure 4-1: Tools Menu.”).
  2. Select “Reset BC01 Test” from the pull down menu and tap the “Run” button (See “Figure 4-3: Reset BC01 Test.”).

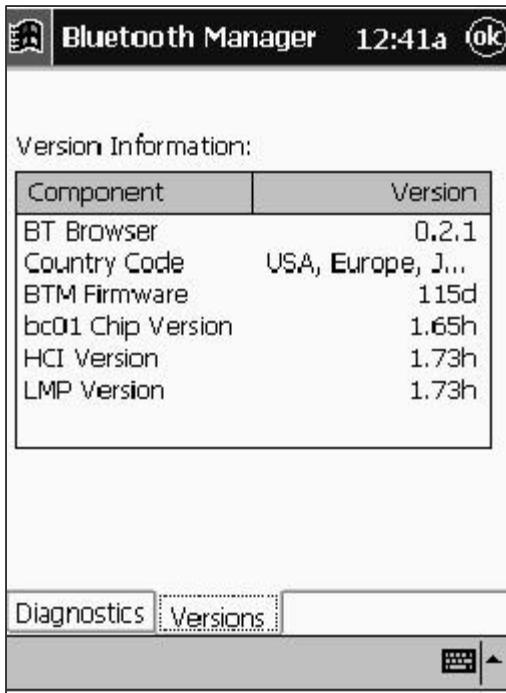


**Figure 4-3: Reset BC01 Test**

The Diagnostics screen will display the result of the test (Pass or Fail).

### 4.3 Versions

- Version information about your device's Hardware, Firmware and Software can be viewed by tapping on the "Versions" tab at the bottom of the Diagnostics screen (See "Figure 4-4: Versions.").



**Figure 4-4: Versions**

## 5 Appendix - A

### 5.1 Troubleshooting

Symptom	Possible Remedy
The Application fails to install Properly.	<ul style="list-style-type: none"><li>Make sure that you have uninstalled any existing Bluetooth software. If necessary, conduct a factory reset of the Handheld PC.</li></ul>
Bluetooth Radio Icon does not appear in the Today's Screen	<ul style="list-style-type: none"><li>Make sure that you have inserted the CF card properly.</li></ul>
I cannot discover other devices.	<ul style="list-style-type: none"><li>Try moving closer to a known device.</li><li>Check to make sure your radio is Turned 'ON' (see the section in Chapter 1, "Bluetooth Radio Icon").</li><li>Check to make sure you have not limited your ability to see devices via the Search Filter (see the section in Chapter 2, "Device List").</li></ul>
My range seems to be degraded in Certain groups.	<ul style="list-style-type: none"><li>Check to ensure you have not restricted the transmission power, (see the section in Chapter 3, "Connections Tab").</li></ul>
Other devices cannot discover my Device.	<ul style="list-style-type: none"><li>Try moving closer to a known device.</li><li>Check to make sure your radio is turned 'ON' (see the section in Chapter 1, "Bluetooth Radio Icon").</li><li>Check to make sure you have not restricted other devices from discovering yours (see the section in Chapter 3, "Connections Tab").</li></ul>
Other devices can discover my device, but they cannot connect.	<ul style="list-style-type: none"><li>Check to make sure you have not restricted other devices from connecting (see the sections in Chapter 3, "Connections Tab", "File Sharing Tab", "PIM Objects Tab" and "Serial Port Tab").</li></ul>

<b>Symptom</b>	<b>Possible Remedy</b>
Other devices do not receive my correct business card information.	<ul style="list-style-type: none"> <li>▪ Make certain that you have properly set up your business card information, (see the section in Chapter 3, “PIM Objects Tab”).</li> </ul>
I saved a device, or devices, to a group; but now I cannot find them.	<ul style="list-style-type: none"> <li>▪ Check to see if they may have expired, (see the section in Chapter 3, “General Tab”).</li> </ul>
My device will not automatically stop searching.	<ul style="list-style-type: none"> <li>▪ Check to make sure you have selected a search period (see the section in Chapter 2, “Device List”).</li> </ul>
My device is always prompting me to supply a password.	<ul style="list-style-type: none"> <li>▪ Check your passkey settings, (see the sections in Chapter 3, “File Sharing Tab”, “PIM Objects Tab”, “Serial Port Tab” and “DialUp Tab”).</li> </ul>
My device will not let me delete the “All Devices” group.	<ul style="list-style-type: none"> <li>▪ The “All Devices” group can not be renamed or deleted.</li> </ul>
I cannot conduct certain transactions with one device that I can perform with another.	<ul style="list-style-type: none"> <li>▪ Not all devices offer the same Bluetooth profiles.</li> </ul>

## **6 Appendix -B**

### **6.1 Agency Requirements**

#### **6.1.1 Federal Communications Commission Notice**

This equipment has been tested and found to comply with the limits for a Class B digital device, pursuant to Part 15 of the FCC Rules. These limits are designed to provide reasonable protection against harmful interference in a residential installation. This equipment generates, uses, and can radiate radio frequency energy and, if not installed and used in accordance with the instructions, may cause harmful interference to radio communications. However, there is no guarantee that interference will not occur in a particular installation. If this equipment does cause harmful interference to radio or television reception, which can be determined by turning the equipment off and on, the user is encouraged to try to correct the interference by one or more of the following measures:

- Reorient or relocate the receiving antenna.
- Increase the separation between the equipment and receiver.
- Connect the equipment into an outlet on a circuit different from that to which the receiver is connected.
- Consult the dealer or an experienced radio or television technician for help.

##### **6.1.1.1 Modifications**

The FCC requires the user to be notified that any changes or modifications made to this device that are not expressly approved by Philips Electronics NA may void the user's authority to operate the equipment.

##### **6.1.1.2 Cables**

Connections to this device must be made with shielded cables with metallic RFI/EMI connector hoods in order to maintain compliance with FCC Rules and Regulations.

## **6.2 Declaration of Conformity for products marked with the FCC logo - United States only**

This device complies with Part 15 of the FCC Rules. Operation is subject to the following two conditions: (1) this device may not cause harmful interference, and (2) this device must accept any interference received, including interference that may cause undesired operation.

For questions regarding your product, contact:



Philips Silicon Valley Centre

XXXXXXXXXXXXXX

YYYYYYYYYYYYY

Or, call

XXX-YYY-ZZZ

For questions regarding this FCC declaration, contact:

Philips Electronics NA

XXXXXXXXXXXXXX

YYYYYYYYYYYYY

ZZZZZZZZZZZZZZ

Or, call

XXX-YYY-ZZZ

To identify this product, refer to the Part, Series, or Model number found on the product.

### **6.2.1 Canadian Notice**

This Class B digital apparatus meets all requirements of the Canadian Interference-Causing Equipment Regulations.

### **6.2.2 Avis Canadien**

Cet appareil numérique de la classe B respecte toutes les exigences du Règlement sur le matériel brouilleur du Canada.

### 6.2.3 Japanese Notice

この装置は、情報処理装置等電波障害自主規制協議会（VCCI）の基準に基づくクラスB情報技術装置です。この装置は、家庭環境で使用することを目的としていますが、この装置がラジオやテレビジョン受信機に近接して使用されると、受信障害を引き起こすことがあります。  
取扱説明書に従って正しい取り扱いをして下さい。

## 6.3 Wireless Notices

In some situations or environments, the use of wireless devices may be restricted. Such restrictions may apply aboard airplanes, in hospitals, near explosives, in hazardous locations, etc. If you are uncertain of the policy that applies to the use of this device, please ask for authorization to use it prior to turning it on.

### 6.3.1 Canadian Regulatory Wireless Notice

Operation is subject to the following two conditions:

- (1) this device may not cause interference, and
- (2) this device must accept any interference, including interference that may cause undesired operation of the device.

To prevent radio interference to the licensed service, this device is intended to be operated indoors and away from windows to provide maximum shielding. Equipment (or its transmit antenna) that is installed outdoors is subject to licensing.

### 6.3.2 European Union Notice



Products bearing the CE marking comply with the R&TTE Directive (1999/5/EC), EMC Directive (89/336/EEC) and the Low Voltage Directive (73/23/EEC) issued by the Commission of the European Community. Compliance with these directives implies conformity to the following European Norms (in parentheses are the equivalent international standards and regulations):

- EN 55022 (CISPR 22) – Electromagnetic Interference
- EN55024 (IEC61000-4-2, 3, 4, 5, 6, 8, 11) – Electromagnetic Immunity
- EN61000-3-3 (IEC61000-3-3) – Power Line Flicker
- EN 60950 (IEC 60950) – Product Safety
- ETS 300 328 – Technical requirements for radio equipment
- ETS 300 826 – General EMC requirements for radio equipment

This product may be used in all EU and EFTA countries.

### 6.3.3 Japanese Notice

この機器の使用周波数帯では、電子レンジ等の産業・科学・医療用機器のほか工場の製造ライン等で使用されている移動体識別用の構内無線局（免許を要する無線局）及び特定小電力無線局（免許を要しない無線局）が運用されています。

- 1 この機器を使用する前に、近くで移動体識別用の構内無線局及び特定小電力無線局が運用されていないことを確認して下さい。
- 2 万一、この機器から移動体識別用の構内無線局に対して電波干渉の事例が発生した場合には、速やかに使用周波数を変更するか又は電波の発射を停止した上、下記連絡先にご連絡頂き、混信回避のための処置等（例えば、パーティションの設置など）についてご相談して下さい。
- 3 その他、この機器から移動体識別用の特定小電力無線局に対して電波干渉の事例が発生した場合など何かお困りのことが起きたときは、次の連絡先へお問い合わせ下さい。

連絡先：コンパクトコンピュータ株式会社 TEL：0120-101589

**2.4 FH 2**

