



## Launch Keys

Located at the top of the keyboard are six buttons. These buttons are called launch keys. They are designated as Wireless, Bluetooth, P1, P2, mail, and Web browser buttons. The Wireless and Bluetooth buttons cannot be set by the user. To set the other four launch keys, run the Acer Launch Manager.



No.	Description	Default application
1	 Wireless LAN (optional)	Activate wireless LAN for wireless communication.
2	 Bluetooth (optional)	Activate Bluetooth for wireless communication.
3	P1	User-programmable
4	P2	User-programmable
5	Mail	Email application
6	Web browser	Internet browser application



**Caution:** It's important that Wireless LAN and Bluetooth is turned off before boarding an airplane.

# Touchpad

The built-in touchpad is a PS/2-compatible pointing device that senses movement on its surface. This means the cursor responds as you move your finger on the surface of the touchpad. The central location on the palmrest provides optimum comfort and support.



**Note:** When using an external USB or serial mouse, you can press **Fn-F7** to disable the touchpad.



## Touchpad basics

The following items teach you how to use the touchpad:



- Move your finger across the touchpad to move the cursor.

- Press the left (#1) and right (#3) buttons located on the edge of the touchpad to do selection and execution functions. These two buttons are similar to the left and right buttons on a mouse. Tapping on the touchpad produces similar results.
- Use the 4-way scroll (#2) button to scroll up or down and move left or right a page. This button mimics your cursor pressing on the right scroll bar of Windows applications.

Function	Left button	Right button	Center buttons	Tap
Execute	Click twice quickly			Tap twice (at the same speed as double-clicking a mouse button)
Select	Click once			Tap once
Drag	Click and hold, then use finger to drag the cursor on the touchpad			Tap twice (at the same speed as double-clicking a mouse button) then hold finger to the touchpad on the second tap and drag the cursor
Access context menu		Click once		
Scroll			Click and hold the up/ down/ left/ right	



**Note:** Keep your fingers dry and clean when using the touchpad. Also keep the touchpad dry and clean. The touchpad is sensitive to finger movements. Hence, the lighter the touch, the better the response. Tapping harder will not increase the touchpad's responsiveness.

# Storage

This computer supplies you with the following media storage:

- High-capacity Enhanced-IDE hard disk
- Optical (2nd HDD, DVD, DVD/CD-RW combo, DVD or DVD dual) drive

## Hard disk

The high-capacity hard disk is the answer to your storage needs. This is where your data files and applications are stored.

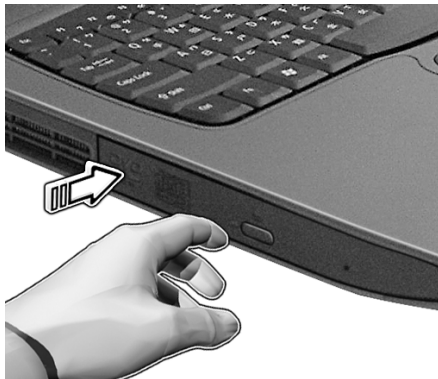
## Optical drive

Your computer comes equipped with an optical drive which may be one of the following:

- DVD-ROM drive
- DVD/CD-RW combo drive
- DVD dual drive

## Ejecting the CD or DVD tray

To eject the CD or DVD tray when the computer is turned on, press the drive eject button; then pull out the tray.



When the power is off, you can eject the drive tray using the emergency eject hole. See page 54.

## Playing DVD movies

When the DVD drive module is installed in the optical drive bay, you can play DVD movies on your computer.

- 1 Eject the DVD tray and insert a DVD movie disc; then close the DVD tray.



**Important!** When you launch the DVD player for the first time, the program asks you to input the region code. DVD discs are divided into 6 regions. Once your DVD drive is set to a region code, it will play DVD discs of that region only. You can set the region code a maximum of five times (including the first time), after which the last region code set will remain permanent. Recovering your hard disk does not reset the number of times the region code has been set. Refer to the table later in this section for DVD movie region code information.

- 2 The DVD movie will automatically play after a few seconds.

Region Code	Country or Region
1	U.S.A., Canada
2	Europe, Middle East, South Africa, Japan
3	Southeast Asia, Taiwan, Korea (South)
4	Latin America, Australia, New Zealand
5	Former U.S.S.R., parts of Africa, India
6	People's Republic of China



**Note:** To change the region code, insert a DVD movie of a different region into the DVD drive.

## Audio

The computer comes with 16-bit high-fidelity AC'97 stereo audio. The built-in dual stereo speakers are easy to access.



There are audio ports on the rear panel of the computer. See “Rear view” on page 6 for more information on external audio devices.

# Power management

This computer has a built-in power management unit that monitors system activity. System activity refers to any activity involving one or more of the following devices: keyboard, mouse, floppy drive, hard disk, peripherals connected to the serial and video memory. If no activity is detected for a period of time (called an inactivity timeout), the computer stops some or all of these devices in order to conserve energy.

This computer employs a power management scheme that supports ACPI (Advanced Configuration and Power Interface), which allows for maximum power conservation and maximum performance at the same time. Windows handles all power-saving chores for your computer.

## Acer light sensor

Acer light sensor allows the TravelMate C300 to automatically brighten or darken the display's backlighting to reduce eyestrain. At the top of the screen, with the status indicators, is the Acer light sensor.

Depending on ambient brightness the screen

When the computer is taken from an area of normal lighting, such as an office, to a darker area, such as a conference room for a presentation, the screen will automatically dim - while still providing the same relative brightness and contrast. Conversely, if the computer is taken into a very bright atrium from the office, the screen will increase in brightness so that you won't have to squint to see what you're working on.

Light sensing has 4 preset modes:

- Mode 1 - the lowest brightness setting for darkened conference rooms
- Mode 2 - for use in softly lit areas
- Mode 3 - standard office setting to deal with overhead fluorescent lighting
- Mode 4 - the brightest setting for working in very bright conditions



-----  
Note: The maximum screen brightness is limited by the LCD manufacturing specifications. The panel will can not be made so bright as to be clearly seen in bright sunlight.



# Moving around with your TravelMate

This section gives you tips and hints on things to consider when moving around or traveling with your computer.

## Disconnecting from the desktop

Follow these steps to disconnect your computer from external accessories:

- 1 Save your work in progress.
- 2 Remove any media, diskette or compact disc, from the drive(s).
- 3 Shut down the operating system.
- 4 Turn off the computer.
- 5 Close the display cover.
- 6 Disconnect the cord from the AC adapter.
- 7 Disconnect the keyboard, pointing device, printer, external monitor, and other external devices.
- 8 Disconnect the Kensington lock if you are using one to secure the computer.

## Moving around

“when you are just moving within short distances, for example, from your office desk to a meeting room”

### Preparing the computer

Before moving the computer, close and latch the display cover to place it in Sleep mode. You can now safely take the computer anywhere you go within the building. To bring the computer out of Sleep mode, open the display.

If you are taking the computer to a client's office or a different building, you may choose to shut down the computer:

- 1 Click on **Start, Turn Off Computer**.
- 2 Click on **Turn Off**.

- or -

you can put the computer in Sleep mode by pressing **Fn-F4**. Then close and latch the display.

When you are ready to use the computer again, unlatch and open the display, and press and release the power switch. If the power indicator is off, the computer has entered Hibernation mode and turned off. Press and release the power switch to turn the computer back on. Note that the computer may enter Hibernation mode after a period of time it is in Sleep mode. Turn the power on to wake up the computer from Hibernation mode.

## What to bring to short meetings

A fully charged battery runs the computer for about 6.5 hours under most circumstances. If your meeting is shorter than that, you probably do not need to bring anything with you other than the computer.

## What to bring to long meetings

If your meeting will last longer than 6.5 hours or if your battery is not fully charged, you may want to bring the AC adapter with you to plug in your computer in the meeting room.

If the meeting room does not have an electrical outlet, reduce the drain on the battery by putting the computer in Sleep mode. Press **Fn-F4** or close the display cover whenever you are not actively using the computer. Then tap any key or open the display to resume.

## Taking the computer home

“when you are moving from your office to your home or vice versa”

### Preparing the computer

After disconnecting the computer from your desktop, follow these steps to prepare the computer for the trip home:

- Check if you have removed all media, diskettes and compact discs, from the drive(s). Failure to remove the media can damage the drive head.
- Pack the computer in a protective case that can prevent the computer from sliding around and cushion it if it should fall.



-----  
**Caution:** Avoid packing items next to the top cover of the computer. Pressure against the top cover can damage the screen

## What to bring with you

Unless you already have some items at home, bring the following items with you:

- AC adapter and power cord
- The printed user's manual

## Special considerations

Follow these guidelines to protect your computer while traveling to and from work:

- Minimize the effect of temperature changes by keeping the computer with you.
- If you need to stop for an extended period of time and cannot bring the computer with you, leave the computer in the trunk of the car to avoid exposing the computer to excessive heat.
- Changes in temperature and humidity can cause condensation. Allow the computer to return to room temperature, and inspect the screen for condensation before turning on the computer. If the temperature change is greater than 18°F (10°C), allow the computer to come to room temperature slowly. If possible, leave the computer for 30 minutes in an environment with a temperature between outside and room temperature.

## Setting up a home office

If you frequently work on your computer at home, you may want to purchase a second AC adapter for use at home. With a second AC adapter, you can avoid transporting the extra weight to and from home.

If you use your computer at home for significant periods of time, you might also want to add an external keyboard, monitor, or mouse.

## Traveling with the computer

“when you are moving within a larger distance, for instance, from your office building to a client’s office building or traveling locally”

### Preparing the computer

Prepare the computer as if you were taking it home. Make sure that the battery in the computer is charged. Airport security may require you to turn on your computer when bringing it into the gate area.

### What to bring with you

Bring the following items with you:

- AC adapter
- Spare, fully-charged battery pack(s)
- Additional printer driver files if you plan to use another printer

### Special considerations

In addition to the guidelines for taking the computer home, follow these guidelines to protect your computer while traveling:

- Always take the computer as carry-on luggage.
- If possible, have the computer inspected by hand. Airport security X-ray machines are safe, but do not put the computer through a metal detector.
- Avoid exposing floppy disks to hand-held metal detectors.

## Traveling internationally with the computer

“when you are moving from country to country”

### Preparing the computer

Prepare the computer as you would normally prepare it for traveling.

### What to bring with you

Bring the following items with you:

- AC adapter
- Power cords that are appropriate for the country to which you are travelling
- Spare, fully-charged battery packs
- Additional printer driver files if you plan to use another printer
- Proof of purchase, in case you need to show it to customs officials
- International Traveler’s Warranty passport

### Special considerations

Follow the same special considerations as when traveling with the computer. In addition, these tips are useful when traveling internationally:

- When travelling in another country, check that the local AC voltage and the AC adapter power cord specifications are compatible. If not, purchase a power cord that is compatible with the local AC voltage. Do not use converter kits sold for appliances to power the computer.
- If you are using the modem, check if the modem and connector is compatible with the telecommunications system of the country you are travelling in.

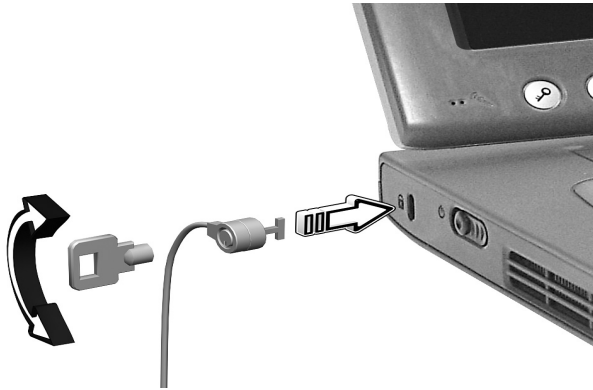
## Securing your computer

Your computer is a valuable investment that you need to take care of. Learn how to protect and take care of your computer.

Security features include hardware and software locks — a security notch and passwords.

### Using a computer security lock

A security keylock notch located on the right panel of the computer lets you connect a Kensington-compatible computer security lock.



Wrap a computer security lock cable around an immovable object such as a table or locked drawer handle. Insert the lock into the notch and turn the key to secure the lock. Some keyless models are also available.

### Setting a password

Follow these steps:

- 1 Use the cursor up/down keys to highlight a password parameter and press the Enter key. The password box appears.

Set Password	
Enter New Password	[            ]
Confirm New Password	[            ]

- 2 Type a password. The password may consist of up to eight characters (A-Z, a-z, 0-9).
- 3 Press Enter. Retype the password to verify your first entry and press Enter.
- 4 After setting the password, the computer automatically sets the chosen password parameter to Present.

## Removing a password

Should you want to remove a password, do the following:

- 1 Use the cursor up/down keys to highlight a password parameter and press the Enter key. The password box appears.
- 2 Enter the current password and press Enter.
- 3 Press Enter twice without entering anything in the new and confirm password fields to remove the existing password.

Set Password		
Enter Current Password	[	]
Enter New Password	[	]
Confirm New Password	[	]



**Note:** When you want to remove the Hard Disk (or 2nd Hard Disk) password, you are prompted for the current Hard Disk password before it is removed.

## Changing a password

Should you want to change a password, do the following:

- 1 Remove the current password.
- 2 Set a new password.

## Setting passwords

You can set passwords using:

- Notebook Manager
- BIOS Utility





## 2 Customizing my computer

After learning the basics of your TravelMate computer, let's get acquainted with the advanced features of your computer. In this chapter, you will learn how to add options, upgrade components for better performance, and customize your computer.

# Expanding through options

Your TravelMate offers you a complete mobile computing experience.

## Connectivity options

Ports allow you to connect peripheral devices to your computer as you would with a desktop PC.

### Modem

Your computer has a built-in V.90/V.92 56Kbps AC'97 Link modem.



.....  
**Warning! This modem port is not compatible with digital phone lines. Plugging this modem into a digital phone line will damage the modem.**

To use the modem, connect a phone cable from the modem jack to a phone line jack.



Start your communications software program. See your communications manual for instructions.

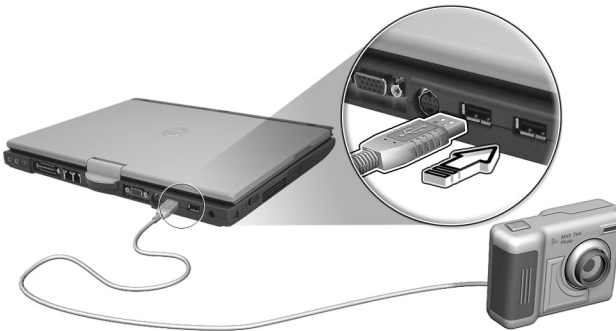
## Network

Your computer has built-in Ethernet / 10/100/1000 t-based Gigabit Ethernet capabilities. To use the network feature, connect an Ethernet cable from the network jack to a network jack or hub. Consult your network administrator for details.



## Universal Serial Bus

The Universal Serial Bus (USB) 2.0 port is a high-speed serial bus which allows you to connect and daisy-chain USB peripherals without taking up precious system resources. Your computer has two ports available.



## PC Card slot

The Type II CardBus PC Card slot found on the right side of the computer accepts credit-card-sized cards that enhance the usability and expandability of the computer. These cards should have a PC Card logo on them.

PC Cards (formerly PCMCIA) are add-on cards for portable computers, giving you expansion possibilities long afforded by desktop PCs. CardBus improves on the 16-bit PC card technology by expanding the bandwidth to 32 bits.



.....

**Note:** Refer to your card's manual for details on how to install and use the card and its functions.

## Inserting a PC Card

Insert the card into the lower slot and make the proper connections (e.g., network cable), if necessary. See your card manual for details.

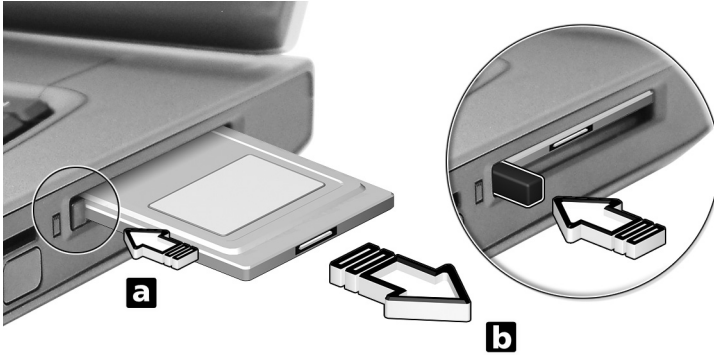


## Ejecting a PC Card

Before ejecting a PC Card:

- 1 Exit the application using the card.
- 2 Left-click on the Safely Remove Hardware icon on the taskbar and click on the PC Card item. Click **OK** to confirm.

- 3 Press the slot eject button (a) to pop out the eject button; then press it again (a) to eject the card (b).



## Upgrade options

Your computer delivers superior power and performance. However, some users and the applications they use may demand more. This computer allows you to upgrade key components when you need increased performance.



**Note:** Contact your authorized dealer if you decide to perform a key component upgrade.

## Memory upgrade

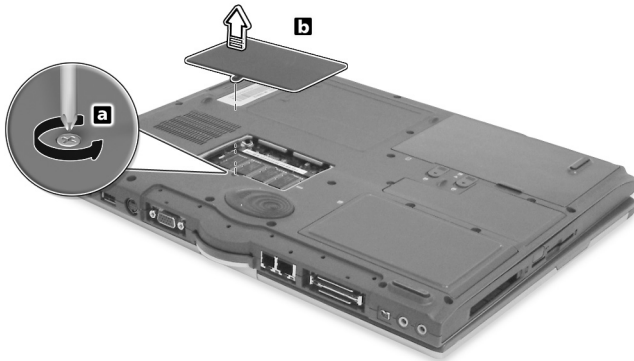
Memory is expandable to 2 GB, employing 256MB/512MB/1GB DDR SDRAM modules on two DDR DIMM slots.

There are two memory slots on your computer, one of which is occupied by standard memory. You can upgrade memory by installing a memory module into the available slot, or replacing the standard memory with a higher-capacity memory module.

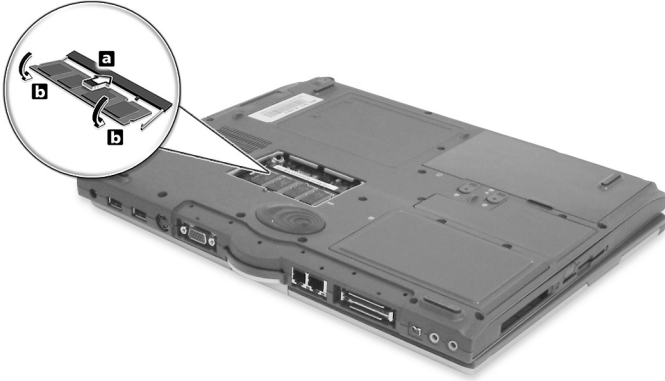
## Installing memory

Follow these steps to install memory:

- 1 Turn off the computer, unplug the AC adapter (if connected) and remove the battery pack. Then turn the computer over to access its base.
- 2 Remove the screw from the memory cover (a); then lift up and remove the memory cover (b).



- 3** Insert the memory module diagonally into the slot (1), then gently press it down until it clicks into place (2).



- 4** Replace the memory cover and secure it with the screw.  
The computer automatically detects and reconfigures the total memory size.



# Using system utilities

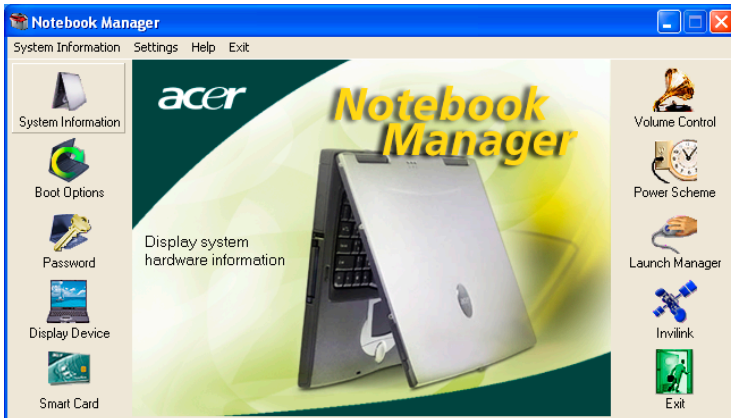
## Notebook Manager

The computer has a built-in system setup program called Notebook Manager. The Windows-based Notebook Manager allows you to set passwords, the startup sequence of the drives, and power management settings. It also shows current hardware configurations.

To start the Notebook Manager, press **Fn-F2** or follow these steps:

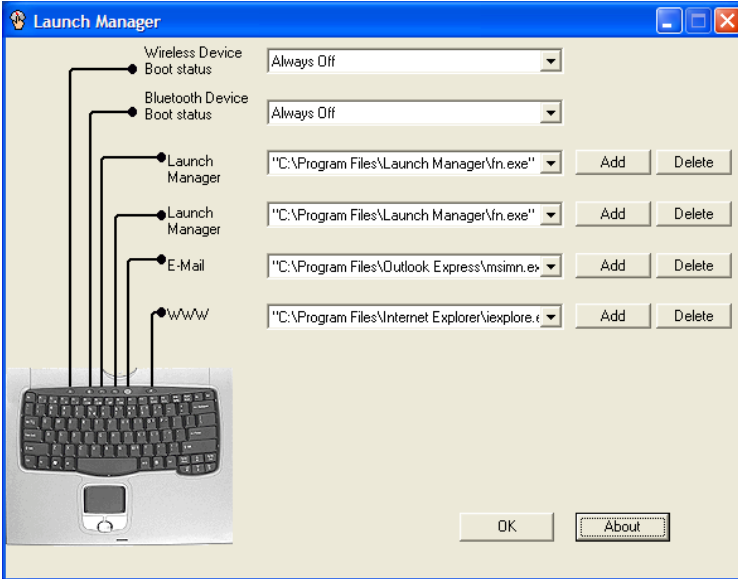
- 1 Click on **Start, All Programs**, then **Notebook Manager**.
- 2 Select the **Notebook Manager** application to run the program.

Click on Help for more information.



## Launch Manager

There are six Launch Keys located above the keyboard. The Wireless button is not programmable. Launch Manager only allows you to set the other five Launch Keys. See "Launch Keys" on page 23 for more information.



You can access the Launch Manager by clicking on **Start, All Programs**, and then **Launch Manager** to start the application.

## BIOS Utility

The BIOS Utility is a hardware configuration program built into your computer's BIOS (basic input/output system).

Your computer is already properly configured and optimized, and you do not need to run this utility. However, if you encounter configuration problems, you may need to run it.

To activate the BIOS Utility, press **F2** during the POST (power-on self-test) while the TravelMate logo is being displayed.



# 3 Troubleshooting my computer

This chapter instructs you on how to deal with common system problems. Read it before calling a technician if a problem occurs. Solutions to more serious problems require opening up the computer. Do not attempt to open the computer by yourself. Contact your dealer or an authorized service center for assistance.

## Frequently-asked questions

The following is a list of possible situations that may arise during the use of your computer. Easy answers and solutions are provided for each one.

I pressed the power switch and opened the display, but the computer does not start or boot-up.

Look at the Power indicator:

- If it is not lit, no power is being applied to the computer. Check the following:
  - If you are running on battery power, it may be low and unable to power the computer. Connect the AC adapter to recharge the battery pack.
  - Make sure that the AC adapter is plugged in properly to the computer and to the power outlet.
- If it is lit, check the following:
  - If the Sleep indicator is lit, the computer is in Sleep mode. Press any key or tap on the touchpad to resume.
  - Is a non-bootable (non-system) diskette in the floppy drive? Remove or replace it with a system diskette and press **Ctrl-Alt-Del** to restart the system.
- The operating system files may be damaged or missing. Insert the startup disk you created during Windows setup into the floppy drive and press **Ctrl-Alt-Del** to restart the system. This will diagnose your system and make necessary fixes.

Nothing appears on the screen.

The computer's power management system automatically blanks the screen to save power. Press any key to turn the display back on.

If pressing a key does not turn the display back on, two things might be the cause:

- The brightness level might be too low. Press **Fn→** to increase the brightness level.
- The display device might be set to an external monitor. Press the display toggle hot key **Fn-F5** to toggle the display back to the computer.

Image is not full-screen.

Make sure that the resolution is set to 1024x768. This is the native resolution of your computer display. Right-click on your Windows desktop and select Properties to bring up the **Display Properties** dialog box. Then click on the Settings tab to make sure that the resolution is set to the appropriate resolution. Resolutions lower than the specified resolution are not full-screen on the computer or on an external monitor.

No audio is heard from the computer.

Check the following:

- The volume may be muted. In Windows, look at the volume control (speaker) icon on the taskbar. If it is crossed-out, click on the icon and deselect the Mute option.
- The speakers may be turned off. Press **Fn-F8** to turn the speakers on (this hot key also turns the speakers off).
- The volume level may be too low. In Windows, look at the volume control icon on the taskbar.
- If headphones, earphones or external speakers are connected to the line-out port, the internal speakers automatically turn off.

I want to eject the CD or DVD tray without turning on the power. I cannot eject the CD or DVD tray.

There is a mechanical eject button on the CD-ROM or DVD-ROM drive. Simply insert the tip of a pen or paperclip and push to eject the tray.





The floppy drive cannot access a diskette.

Check the following:

- Make sure the diskette is properly inserted in the floppy drive.
- Make sure the diskette is formatted.
- If the diskette is not the cause of the problem, the floppy drive may be dirty. Clean it using a drive cleaning kit. Follow the instructions included with the kit.

The CD or DVD drive cannot access a disc.

Check the following:

- Make sure the disc is supported by the drive. If your computer has a CD-ROM drive, it can read CDs but cannot read DVDs. If your computer has a DVD drive, it can read DVDs in addition to CDs.
- When placing the CD or DVD in the drive tray, make sure it is secure in the spindle on the drive tray.
- Make sure the CD or DVD is free from scratches or smudges. If the CD or DVD is dirty, clean it using a disc cleaning kit. Remember to follow the instructions included with the kit.
- If the problem does not lie with the disc, your CD or DVD drive may be dirty. Clean it using a drive cleaning kit. Follow the instructions included with the kit.

The keyboard does not respond.

Try attaching an external keyboard to the USB connector on the computer's rear. If it works, contact your dealer or an authorized service center as the internal keyboard cable may be loose.

The printer does not work.

Check the following:

- Make sure that the printer is connected to a power outlet and that it is turned on.
- Depending on your connection (USB), make sure that the printer cable is connected securely to the appropriate port on your computer and the corresponding port on the printer.

I want to set up my location to use the internal modem.

To properly use your communications software, you need to set up your location:

- 1** Click on **Start, Control Panel**.
- 2** Double-click on **Phone and Modem Options**.
- 3** Click on the **Dialing Rules** tab and begin setting up your location.

Refer to Windows Help and Support.

# Requesting service

## International Travelers Warranty (ITW)

Your computer is backed by an International Traveler's Warranty (ITW) that gives you security and peace of mind when traveling. Our worldwide network of service centers are there to give you a helping hand.

An ITW passport comes with your computer. This passport contains all you need to know about the ITW program. A list of available, authorized service centers is in this handy booklet. Read this passport thoroughly.

Always have your ITW passport on hand, especially when you travel to receive the benefits from our support centers. Place your proof-of-purchase in the flap located inside the front cover of the ITW passport.

If the country you are traveling in does not have an Acer-authorized ITW service site, you can still get in contact with our offices worldwide.

Please consult [www.acersupport.com](http://www.acersupport.com)

## Before you call

Please have the following information available when you call Acer for online service, and please be at your computer when you call. With your support, we can reduce the amount of time a call takes and help solve your problems efficiently.

If there are error messages or beeps reported by your computer, write them down as they appear on the screen (or the number and sequence in the case of beeps).

You are required to provide the following information:

Name: \_\_\_\_\_

Address: \_\_\_\_\_

\_\_\_\_\_

Telephone number: \_\_\_\_\_

Machine and model type: \_\_\_\_\_

Serial number: \_\_\_\_\_

Date of purchase: \_\_\_\_\_

Appendix A

Acer soft button

This appendix introduces the Acer soft button  
, a unique new tool to increase the  
ease of use of your Tablet PC.

## Acer soft button

Acer soft button is a radial device that manages program icons, system settings/utilities, file folders and network locations.



Surrounding the central Acer brand name logo are three levels of functionality (level 1, level 2, and level 3) numbered from inner to outer.

You will notice, when the EMR stylus is moved near the Acer soft button, that the Acer brand name fades and is replaced by a number of arrows.



- You may drag the Acer soft button wherever you want it on the screen. Simply press and hold the EMR stylus to the Acer soft button and drag it.

- The top arrow (12 o'clock position) vertically flips the display output 180 degrees. This means what was at the top of the screen, will now be at the bottom. Simply press the icon as shown



- The left arrow (9 o'clock position) rotates the display output 90 degrees counter-clockwise. This changes the output from landscape to portrait or vice versa. Simply press the icon as shown





- The right arrow (3 o'clock position) rotates the display output 90 degrees clockwise. This changes the output from landscape to portrait or vice versa. Simply press the icon as shown





Appendix B  
Specifications

This appendix lists the general specifications of your computer.

### Microprocessor

- Intel® Pentium® M processor with 1 MB L2 cache

### Memory

- Main memory expandable to 2 GB
- Two DDR SDRAM DIMM slots
- Supports 256MB, 512MB, 1GB DDR SDRAM modules
- 512 KB Flash ROM BIOS; Shadow RAM support

### Data storage

- One high-capacity, Enhanced-IDE hard disk
- One 5.25-inch internal DVD-ROM, DVD/CD-RW combo or DVD dual drive

### Display and video

- 14.1" Thin-Film Transistor (TFT) liquid crystal-display (LCD) supporting pen-based input, with 16M color at 1024x768 XGA (eXtended Graphics Array) resolution
- Integrated VGA controller with Dynamic Video Memory Allocation technology up to 64 MB
- Simultaneous LCD and external display support
- Dual display support

### Audio

- 16-bit AC'97 stereo audio
- Dual stereo speakers
- Windows Sound System-compatible
- Separate audio ports for line-out, line-in devices
- Built-in internal microphone

### Keyboard and pointing device

- 87/88/90-key Windows keyboard with 101/102 key emulation
- Ergonomically-centered touchpad pointing device with two buttons and 4-way scroll button

### I/O ports

- One Card bus type II card slot
- One smart-card slot
- One RJ-11 phone jack (V.90/V.92, 56Kbps modem)
- One RJ-45 network jack (Gigabit Ethernet)
- One DC-in jack (AC adapter)
- One external monitor (VGA) port
- One S-video TV out port
- One 100-pin port replicator connector
- One line-out (headphone) jack (3.5mm minijack)
- One line-in (microphone) jack (3.5mm minijack)
- Two USB 2.0 ports
- One 4-pin IEEE 1394 port
- One infrared (FIR) port

### Weight and dimensions

- 2.83 kg (6.23 lbs) for 14.1" TFT model
- 326 (W) x 272 (D) x 33.4~35.9 (H) mm

### Environment

- Temperature
  - Operating: 5°C ~ 35°C
  - Non-operating: -10°C ~ 60°C
- Humidity (non-condensing)
  - Operating: 20% ~ 85% RH
  - Non-operating: 20% ~ 85% RH

### System

- Microsoft Windows XP Tablet PC Edition SP1
- ACPI 1.0 compliant BIOS
- Phoenix BIOS
- Suspend to RAM/Disk

## Power

- Battery pack
  - 8 cell Li-Ion battery pack
  - 6.5 hours operating time with Battery mark 4.0
- AC adapter
  - 65-Watt
  - Auto sensing 100~240V AC, 50~60Hz

## Wireless Communications

- Optional Intel PRO/Wireless 2100 or 2100A module
- Optional MDC Bluetooth module (includes built-in antenna)

## Options

- 256MB/512MB/1GB memory upgrade module
- Additional AC adapter, Battery, or Weight-saver
- Hot-swappable optical drive
  - 8x DVD module
  - DVD/CD-RW combo module
- Additional HDD module
- 2nd battery





# Appendix C

# Notices

This appendix lists the general notices of your computer.

## FCC notice

This device has been tested and found to comply with the limits for a Class B digital device pursuant to Part 15 of the FCC Rules. These limits are designed to provide reasonable protection against harmful interference in a residential installation. This device generates, uses, and can radiate radio frequency energy and, if not installed and used in accordance with the instructions, may cause harmful interference to radio communications.

However, there is no guarantee that interference will not occur in a particular installation. If this device does cause harmful interference to radio or television reception, which can be determined by turning the device off and on, the user is encouraged to try to correct the interference by one or more of the following measures:

- Reorient or relocate the receiving antenna
- Increase the separation between the device and receiver
- Connect the device into an outlet on a circuit different from that to which the receiver is connected
- Consult the dealer or an experienced radio/television technician for help

### Notice: Shielded cables

All connections to other computing devices must be made using shielded cables to maintain compliance with FCC regulations.

### Notice: Peripheral devices

Only peripherals (input/output devices, terminals, printers, etc.) certified to comply with the Class B limits may be attached to this equipment. Operation with non-certified peripherals is likely to result in interference to radio and TV reception.

### Caution

Changes or modifications not expressly approved by the manufacturer could void the user's authority, which is granted by the Federal Communications Commission, to operate this computer.

### Use conditions

This part complies with Part 15 of the FCC Rules. Operation is subject to the following two conditions: (1) this device may not cause harmful interference, and (2) this device must accept any interference received, including interference that may cause undesired operation.

## Notice: Canadian users

This Class B digital apparatus meets all requirements of the Canadian Interference-Causing Equipment Regulations.

## Remarque à l'intention des utilisateurs canadiens

Cet appareil numérique de la classe B respecte toutes les exigences du Règlement sur le matériel brouilleur du Canada.

## Modem notices

### FCC

This equipment complies with Part 68 of the FCC rules. Located on the bottom side of the modem is a label that contains, among other information, the FCC Registration Number and Ringer Equivalence Number (REN) for this equipment. Upon request, you must provide this information to your telephone company.

If your telephone equipment causes harm to the telephone network, the telephone company may discontinue your service temporarily. If possible, they will notify you in advance. But, if advance notice is not practical, you will be notified as soon as possible. You will also be informed of your right to file a complaint with the FCC.

Your telephone company may make changes in its facilities, equipment, operations, or procedures that could affect the proper functioning of your equipment. If they do, you will be notified in advance to give you an opportunity to maintain uninterrupted telephone service.

If this equipment should fail to operate properly, disconnect the equipment from the phone line to determine if it is causing the problem. If the problem is with the equipment, discontinue use and contact your dealer or vendor.

### TBR 21

This equipment has been approved [Council Decision 98/482/EC - "TBR 21"] for pan-European single terminal connection to the Public Switched Telephone Network (PSTN). However, due to differences between the individual PSTNs provided in different countries, the approval does not, of itself, give an unconditional assurance of successful operation on every PSTN termination point. In the event of problems, you should contact your equipment supplier in the first instance.

## Important safety instructions

Read these instructions carefully. Save these instructions for future reference.

- 1** Follow all warnings and instructions marked on the product.
- 2** Unplug this product from the wall outlet before cleaning. Do not use liquid cleaners or aerosol cleaners. Use a damp cloth for cleaning.
- 3** Do not use this product near water.
- 4** Do not place this product on an unstable cart, stand, or table. The product may fall, causing serious damage to the product.
- 5** Slots and openings in the cabinet and the back or bottom are provided for ventilation; to ensure reliable operation of the product and to protect it from overheating, these openings must not be blocked or covered. The openings should never be blocked by placing the product on a bed, sofa, rug, or other similar surface. This product should never be placed near or over a radiator or heat register, or in a built-in installation unless proper ventilation is provided.
- 6** This product should be operated from the type of power indicated on the marking label. If you are not sure of the type of power available, consult your dealer or local power company.
- 7** Do not allow anything to rest on the power cord. Do not locate this product where persons will walk on the cord.
- 8** If an extension cord is used with this product, make sure that the total ampere rating of the equipment plugged into the extension cord does not exceed the extension cord ampere rating. Also, make sure that the total rating of all products plugged into the wall outlet does not exceed the fuse rating.
- 9** Never push objects of any kind into this product through cabinet slots as they may touch dangerous voltage points or short out parts that could result in a fire or electric shock. Never spill liquid of any kind on the product.
- 10** Do not attempt to service this product yourself, as opening or removing covers may expose you to dangerous voltage points or other risks. Refer all servicing to qualified service personnel.
- 11** Unplug this product from the wall outlet and refer servicing to qualified service personnel under the following conditions:
  - a** When the power cord or plug is damaged or frayed
  - b** If liquid has been spilled into the product
  - c** If the product has been exposed to rain or water

- d** If the product does not operate normally when the operating instructions are followed. Adjust only those controls that are covered by the operating instructions since improper adjustment of other controls may result in damage and will often require extensive work by a qualified technician to restore the product to normal condition.
  - e** If the product has been dropped or the cabinet has been damaged
  - f** If the product exhibits a distinct change in performance, indicating a need for service.
- 12** Replace the battery with the same type as the product's battery we recommend. Use of another battery may present a risk of fire or explosion. Refer battery replacement to a qualified serviceman.
- 13** Warning! Batteries may explode if not handled properly. Do not disassemble or dispose of them in fire. Keep them away from children and dispose of used batteries promptly.
- 14** Use only the proper type of power supply cord set (provided in your accessories box) for this unit. It should be a detachable type: UL listed/CSA certified, type SPT-2, rated 7A 125V minimum, VDE approved or its equivalent. Maximum length is 15 feet (4.6 meters).

## Laser compliance statement

The CD or DVD drive used with this computer is a laser product. The CD or DVD drive's classification label (shown below) is located on the drive.

### CLASS 1 LASER PRODUCT

**CAUTION:** VISIBLE AND INVISIBLE LASER RADIATION WHEN OPEN. AVOID EXPOSURE TO BEAM.

### APPAREIL A LASER DE CLASSE 1 PRODUIT

**LASERATTENTION:** RADIATION DU FAISCEAU LASER INVISIBLE EN CAS D'OUVERTURE. EVITER TOUTE EXPOSITION AUX RAYONS.

### LUOKAN 1 LASERLAITE LASER KLASSE 1

**VORSICHT:** UNSICHTBARE LASERSTRAHLUNG, WENN ABDECKUNG GEÖFFNET NICHT DEM STRAHL AUSSETZEN

### PRODUCTO LÁSER DE LA CLASE I

**ADVERTENCIA:** RADIACIÓN LÁSER INVISIBLE AL SER ABIERTO. EVITE EXPONERSE A LOS RAYOS.

**ADVASEL:** LASERSTRÅLING VEDÅBNING SE IKKE IND I STRÅLEN.

VARO! LAVATTAESSA OLET ALTTINA LASERSÄTEILYLLE.

**WARNING:** LASERSTRÅLNING NÅR DENNA DEL ÅR ÖPPNAD ÅLÅ TUIJOTA SÄTEESEENSTIRRA EJ IN I STRÅLEN

**WARNING:** LASERSTRÅLNING NAR DENNA DEL ÅR ÖPPNADSTIRRA EJ IN I STRÅLEN

**ADVARSEL:** LASERSTRÅLING NAR DEKSEL ÅPNESSTIRR IKKE INN I STRÅLEN

## Lithium battery statement

**The TravelMate C300 series uses the lithium battery, models BTP-63D1, SBTP-3D1.**

### **CAUTION**

Danger of explosion if battery is incorrectly replaced. Replace only with the same or equivalent type recommended by the manufacturer. Discard used batteries according to the manufacturer's instructions.

### **ADVARSEL!**

Lithiumbatteri - Eksplosjonsfare ved feilagtig håndtering. Udsiftning må kun ske med batteri af samme fabrikat og type. Léver det brugte batteri tilbage til leverandøren.

### **ADVARSEL**

Eksplosjonsfare ved feilaktig skifte av batteri. Benytt samme batteritype eller en tilsvarende type anbefalt av apparatfabrikanten. Brukte batterier kasseres i henhold til fabrikantens instruksjoner.

### **VARNING**

Explosionsfara vid felaktigt batteribyte. Använd samma batterityp eller en ekvivalent typ som rekommenderas av apparattillverkaren. Kassera använt batteri enligt fabrikantens instruktion.

### **VAROITUS**

Päristö voi räjähtää, jos se on virheellisesti asennettu. Vaihda paristo ainoastaan laitevalmistajan suosittelemaan tyyppiin. Hävitä käytetty paristo valmistajan ohjeiden mukaisesti.

### **VORSICHT!**

Explosionsgefahr bei unsachgemäßen Austausch der Batterie Ersatz nur durch denselben oder einem vom Hersteller empfohlenem ähnlichen Typ. Entsorgung gebrauchter Batterien nach Angaben des Herstellers.

## LCD pixel statement

The LCD unit is produced with high-precision manufacturing techniques. Nevertheless, some pixels may occasionally misfire or appear as black or colored dots. This has no effect on the recorded image and does not constitute a malfunction.

## Macrovision copyright protection notice

This product incorporates copyright protection technology that is protected by method claims of certain U.S. patents and other intellectual property rights owned by Macrovision Corporation and other rights owners. Use of this copyright protection technology must be authorized by Macrovision Corporation, and is intended for home and other limited viewing uses only unless otherwise authorized by Macrovision Corporation. Reverse engineering or disassembly is prohibited.

Apparatus Claims of U.S. Patent Nos. 4,631,603, 4,577,216, 4,819,098, and 4,907,093 licensed for limited viewing uses only.

**Note: Below regulatory information is for models with wireless LAN and/or Bluetooth only.**

### Regulatory Information

The Wireless module must be installed and used in strict accordance with the manufacturer's instructions. This device complies with the following radio frequency and safety standards.

#### Canada - Industry Canada (IC)

- This device complies with RSS 210 of Industry Canada.



## USA - Federal Communications Commission (FCC)

This device complies with Part 15 of FCC Rules. Operation of the devices in an Wireless LAN System is subject to the following two conditions:

- This device may not cause harmful interference.
- This device must accept any interference that may cause undesired operation.

## Exposure to Radio Frequency Radiation

The radiated output power of the Wireless module is far below the FCC radio frequency exposure limits. Nevertheless, the Wireless module shall be used in such a manner that the potential for human contact during normal operation is minimized.

The transmitter and the antenna are permanently installed inside the notebook, and are specific for this model (not for generic computer). The antenna of this device is installed on the top of the LCD display. For compliance with FCC radiation exposure limits.

This equipment has been tested and found to comply with the limits for a Class B digital device, pursuant to Part 15 of the FCC Rules. These limits are designed to provide reasonable protection against harmful interference in a residential installation. This equipment generates, uses and can radiate radio frequency energy and, if not installed and used in accordance with the instructions, may cause harmful interference to radio communications. However, there is no guarantee that interference will not occur in a particular installation. If this equipment does cause harmful interference to radio or television reception, which can be determined by turning the equipment off and on, the user is encouraged to try to correct the interference by one of the following measures:

- Reorient or relocate the receiving antenna.
- Increase the separation between the equipment and receiver.
- Connect the equipment into an outlet on a circuit different from that to which the receiver is connected.
- Consult the dealer or an experienced radio/TV technician for help.

**FCC Caution:** To assure continued compliance, any changes or modifications not expressly approved by the party responsible for compliance could void the user's authority to operate this equipment (example - use only shielded interface cables when connecting to computer or peripheral devices).

This device complies with Part 15 of the FCC Rules. Operation is subject to the following two conditions: (1) This device may not cause harmful interference, and (2) this device must accept any interference received, including interference that may cause undesired operation.

# Index

## A

- AC adapter
  - caring for v
- audio 28
  - troubleshooting 54

## B

- battery pack
  - caring for v
  - charging indicator 15
- BIOS utility 49
- brightness
  - hotkeys 21

## C

- caps lock 17
  - on indicator 15
- care
  - AC adapter v
  - battery pack v
  - computer iv
- CD
  - troubleshooting 55
- CD-ROM
  - ejecting 26
  - ejecting manually 54
  - troubleshooting 54
- cleaning
  - computer v
- computer
  - bringing to meetings 32
  - caring for iv
  - cleaning v
  - disconnecting 31
  - features 3, 12
  - indicators 14
  - keyboards 17
  - moving around 31
  - on indicator 14
  - performance 12
  - security 36
  - setting up a home office 33
  - taking home 32
  - traveling internationally 35

- traveling on local trips 34
- troubleshooting 52
- turning off iv

## D

- display
  - hotkeys 21
  - troubleshooting 53, 54
- DVD 27
  - troubleshooting 55
- DVD movies
  - playing 27
- DVD RW drive 12

## E

- Ethernet 42
- Euro 21, 22

## F

- FAQ. See frequently-asked questions
- floppy drive
  - troubleshooting 55
- frequently-asked questions 53
- front view 3

## H

- hard disk 26
- help
  - online services 57
- Hibernation mode
  - hotkey 20
- hotkeys 20

## I

- indicator lights 14
- ITW. See warranty

## K

- keyboard 17
  - embedded numeric keypad 18
  - hotkeys 20
  - lock keys 17
  - troubleshooting 55
  - Windows keys 19

## L

- LEDs 14

## M

- media access

- on indicator 15

## memory

- installing 45– 46
- upgrading 44

- modem 41

## N

- network 42

- Notebook Manager 47

- hotkey 20

## notice

- DVD copyright protection 78

- num lock 17

- on indicator 15

- numeric keypad

- embedded 18

- num lock 18

## O

- online services 57

- optical drive 26

## options

- memory upgrade 44

## P

- PC Card 43

- ejecting 43

- inserting 43

- ports 41

- POST (power-on self-test) 49

## printer

- troubleshooting 55

- problems 53

- CD 55

- CD-ROM 54

- diskette 55

- display 53, 54

- DVD 55

- floppy drive 55

- keyboard 55

- printer 55

- startup 53

- troubleshooting 52

## Q

- questions

- setting location for modem use

56

## S

### safety

- CD-ROM 76

- FCC notice 73

- general instructions 75

- modem notices 74

- scroll lock 17

### security

- keylock 36

### service

- when to call v

### speakers

- hotkey 21

- troubleshooting 54

- specifications 60, 66

### Standby mode

- hotkey 20

- status indicator 14

- status indicators 14

### storage 26

- CD, DVD, or DVD/CD-RW combo drive 26

- hard disk 26

### support

- information 57

## T

- touchpad 24

- hotkey 21

- using 24– 25

### travel

- international flights 35

- local trips 34

- troubleshooting 52

## U

- universal serial bus 42

- Using computer in tablet mode 9

### utility

- BIOS Setup 49

## V

### view

- front 4

- left 4

rear 6  
right 5

**W**  
warranty

International Traveler's  
Warranty 57  
Windows keys 19

