

PC Card slot

The Type II CardBus PC Card slot found on the right side of the computer accepts credit-card-sized cards that enhance the usability and expandability of the computer. These cards should have a PC Card logo on them.

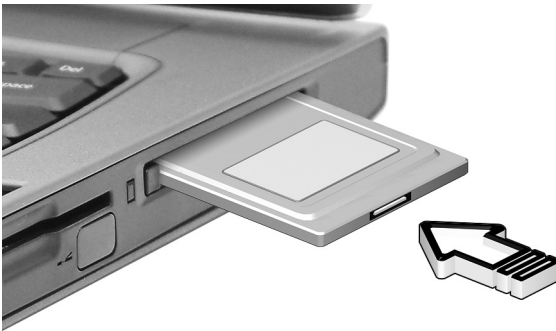
PC Cards (formerly PCMCIA) are add-on cards for portable computers, giving you expansion possibilities long afforded by desktop PCs. CardBus improves on the 16-bit PC card technology by expanding the bandwidth to 32 bits.



.....
Note: Refer to your card's manual for details on how to install and use the card and its functions.

Inserting a PC Card

Insert the card into the lower slot and make the proper connections (e.g., network cable), if necessary. See your card manual for details.

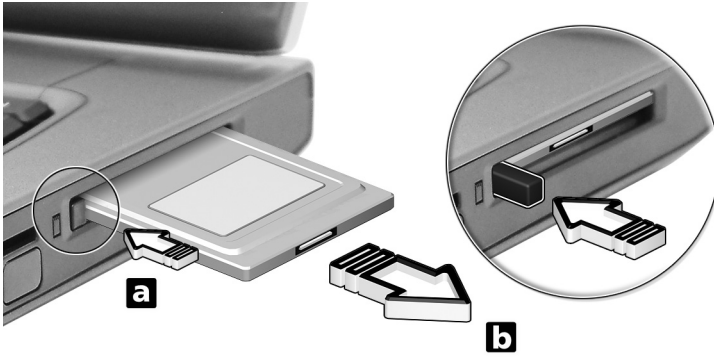


Ejecting a PC Card

Before ejecting a PC Card:

- 1 Exit the application using the card.
- 2 Left-click on the Safely Remove Hardware icon on the taskbar and click on the PC Card item. Click **OK** to confirm.

- 3 Press the slot eject button (1) to pop out the eject button; then press it again (1) to eject the card (2).



Upgrade options

Your computer delivers superior power and performance. However, some users and the applications they use may demand more. This computer allows you to upgrade key components when you need increased performance.



Note: Contact your authorized dealer if you decide to perform a key component upgrade.

Memory upgrade

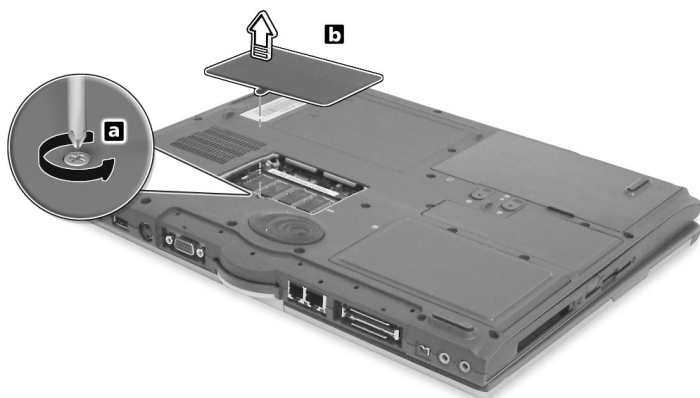
Memory is expandable to 2 GB, employing 256MB/512MB/1GB SDRAM modules. Two DDR DIMM slots. The computer supports shadow RAM.

There are two memory slots on your computer, one of which is occupied by standard memory. You can upgrade memory by installing a memory module into the available slot, or replacing the standard memory with a higher-capacity memory module.

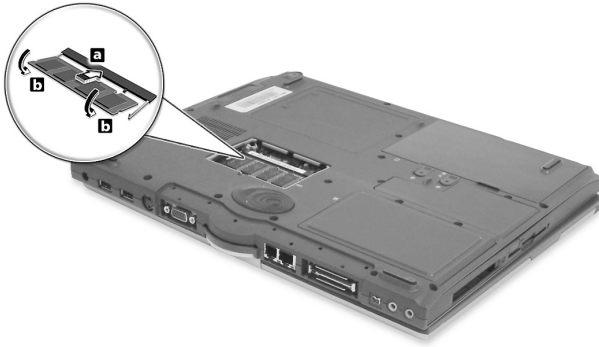
Installing memory

Follow these steps to install memory:

- 1** Turn off the computer, unplug the AC adapter (if connected) and remove the battery pack. Then turn the computer over to access its base.
- 2** Remove the screw from the memory cover (a); then lift up and remove the memory cover (b).



- 3 Insert the memory module diagonally into the slot (1), then gently press it down until it clicks into place (2).



- 4 Replace the memory cover and secure it with the screw.
The computer automatically detects and reconfigures the total memory size.

Using system utilities

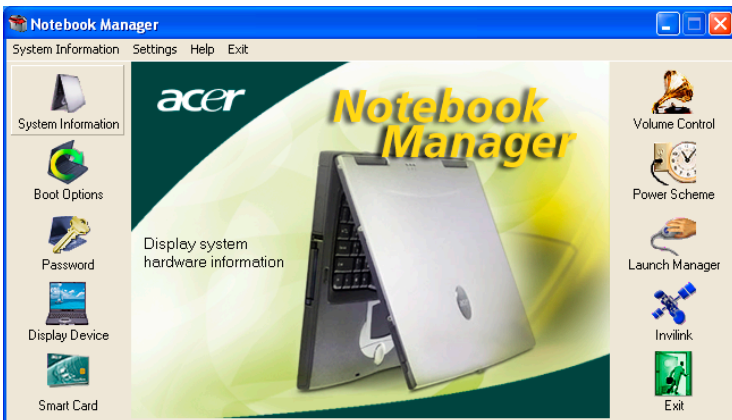
Notebook Manager

The computer has a built-in system setup program called Notebook Manager. The Windows-based Notebook Manager allows you to set passwords, the startup sequence of the drives, and power management settings. It also shows current hardware configurations. It also shows current hardware configurations.

To start the Notebook Manager, press **Fn-F2** or follow these steps:

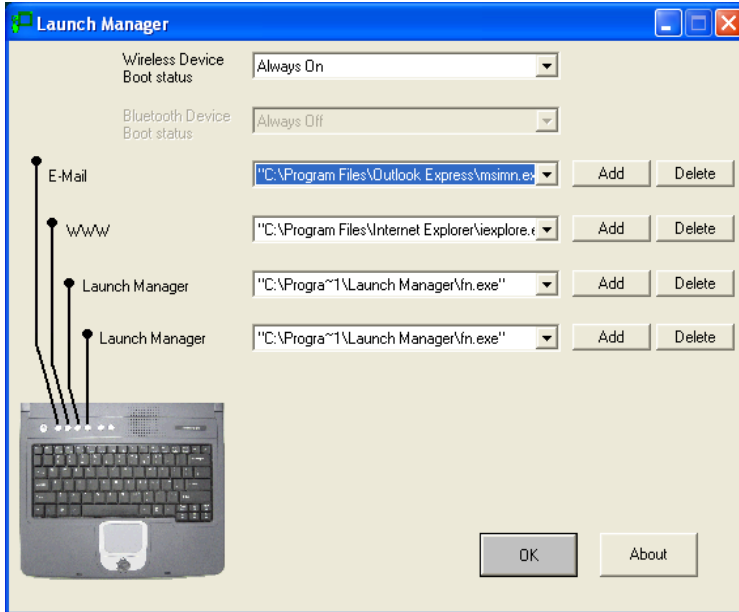
- 1 Click on **Start, All Programs**, then **Notebook Manager**.
- 2 Select the **Notebook Manager** application to run the program.

Click on Help for more information.



Launch Manager

There are six Launch Keys located above the keyboard. The Wireless button is not programmable. Launch Manager only allows you to set the other five Launch Keys. See “Launch Keys” on page 23 for more information.



You can access the Launch Manager by clicking on **Start, All Programs**, and then **Launch Manager** to start the application.

BIOS Utility

The BIOS Utility is a hardware configuration program built into your computer's BIOS (basic input/output system).

Your computer is already properly configured and optimized, and you do not need to run this utility. However, if you encounter configuration problems, you may need to run it.

To activate the BIOS Utility, press **F2** during the POST (power-on self-test) while the TravelMate logo is being displayed.

| PhoenixBIOS Setup Utility | | | | | |
|---|--------------------------------------|----------|----------|------|------|
| Information | Main | Advanced | Security | Boot | Exit |
| CPU Type | Intel (R)Celeron(R) CPU 2.4 GHz | | | | |
| System Memory: | 640 KB | | | | |
| Extended Memory: | 121344 KB | | | | |
| HDD1 Serial Number | XXXXXX | | | | |
| System BIOS Version | VX.XX (XXXXXXXX) | | | | |
| VGA BIOS Version | XXXX | | | | |
| KBC Version | 02.29.25 | | | | |
| Serial Number | XXXXXXXXXXXXXXXXXX | | | | |
| Asset Tag Number | | | | | |
| Product Name | TravelMate | | | | |
| Manufacture Name | Acer | | | | |
| UUID Number | 00000000-0000-0000-0000-000000000000 | | | | |
| F1 Help ↑↓ Select Item -/+ Change Values F9 Setup Defaults Esc Exit ←→ Select Menu Enter Select > Sub-Menu F10 Save and Exit | | | | | |

Navigating the BIOS Utility

These are the menu options: Information, Main, Advanced, Security, Boot and Exit.

To enter a menu, highlight the item using the ← → keys.

Within a menu, navigate through the BIOS Utility by following these instructions:

- Press the cursor up/down keys (↑↓) to select item.
- Press the -/+ to change the value of a parameter.
- Press **Enter** to go to sub-menu.
- Press **Esc** while you are in any of the menu options to return to the main menu



Note: You can change the value of a parameter if it is enclosed in square brackets. Navigation keys for a particular menu are shown on the bottom of the screen.

Information

The Information screen displays a summary of your computer hardware information.

| PhoenixBIOS Setup Utility | | | | | |
|---|--------------------------------------|----------|----------|------|------|
| Information | Main | Advanced | Security | Boot | Exit |
| CPU Type | Intel (R)Celeron(R) CPU | | 2.4 GHz | | |
| System Memory: | 640 KB | | | | |
| Extended Memory: | 121344 KB | | | | |
| HDD1 Serial Number | XXXXXX | | | | |
| System BIOS Version | VX.XX(XXXXXXX) | | | | |
| VGA BIOS Version | XXXX | | | | |
| KBC Version | 02.29.25 | | | | |
| Serial Number | XXXXXXXXXXXXXXXXXX | | | | |
| Asset Tag Number | | | | | |
| Product Name | TravelMate | | | | |
| Manufacture Name | Acer | | | | |
| UUID Number | 00000000-0000-0000-0000-000000000000 | | | | |
| F1 Help ↵ Select Item -/+ Change Values F9 Setup Defaults Esc Exit ← Select Menu Enter Select > Sub-Menu F10 Save and Exit | | | | | |



Note: The screen above is for reference only. Actual values may differ.

The table below describes the parameters in this screen.

| Parameter | Description |
|----------------------|--|
| CPU Type | Describes the type of CPU installed in the system. |
| System Memory (KB) | Shows the system memory size. |
| Extended Memory (MB) | Shows the extended memory size. |

| Parameter | Description |
|---------------------|---|
| HDD1 Serial Number | Shows the primary master hard disk drive serial number. |
| System BIOS Version | Shows the system BIOS version. |
| VGA BIOS Version | Shows the video graphics accelerator BIOS version. |
| KBC Version | Shows the current keyboard controller (KBC) version |
| Serial Number | Shows the system serial number. |
| Asset Tag Number | Shows the asset tag number. |
| Product Name | Shows the official name of the product. |
| Manufacturer Name | Shows the name of the manufacturer. |
| UUID | Shows the universally unique identifier number. |

Main

The Main menu screen allows you to set basic settings about your computer such as date and time and boot settings.

| PhoenixBIOS Setup Utility | | | | | |
|------------------------------|----------------|-------------------------|----------|-------------------|--|
| Information | Main | Advanced | Security | Boot | Exit |
| System Time: | | [10:10:35] | | | Item Specific Help |
| System Date: | | [10/26/2002] | | | |
| Boot Display | | [Auto] | | | <Tab>, <Shift-Tab>, or <Enter> selects field. |
| QuickBoot Mode: | | [Enabled] | | | |
| Boot-time Diagnostic Screen: | | [Disabled] | | | |
| Boot on LAN | | [Disabled] | | | |
| Hotkey Beep | | [Enabled] | | | |
| Auto Dim | | [Enabled] | | | |
| F12 Multi-Boot | | [Enabled] | | | |
| F1 Help | ↑↓ Select Item | -/+ Change Values | | F9 Setup Defaults | |
| Esc Exit | ← Select Menu | Enter Select > Sub-Menu | | F10 Save and Exit | |

The table below describes the parameters in the screen.

| Parameter | Description |
|-----------------------------|--|
| System Time | Sets the system time. Format: HH:MM:SS (hour:minute:second) |
| System Date | Sets the system date. Format: MMM DD YYYY (month day year) |
| Boot Display | Sets the display device when the computer starts up. Options: Both or Auto |
| QuickBoot Mode | Quick Boot allows your computer to skip certain tests at start-up to speed-up the boot process. Options: Enabled or Disabled |
| Boot-time Diagnostic Screen | Shows the logo during boot up. Options: Enabled or Disabled |
| Boot on LAN | When enabled, allows your computer to boot up via the network Options: Enabled or Disabled |
| Hotkey Beep | Enables or disables a beep when a hotkey is pressed. Options: Enabled or Disabled |
| Auto Dim | When enabled, the system will automatically dim the LCD screen when system is running on battery power. Options: Enabled or Disabled |
| F12 Multi-Boot | When enabled, the "Fn-F12 for multi-boot" message will be displayed during POST. Options: Enabled or Disabled |

Advanced

The Advanced screen contains parameters values that define how your computer behaves on startup.

| PhoenixBIOS Setup Utility | | | | | |
|--|------|-----------------------|--------------------|------|------|
| Information | Main | Advanced | Security | Boot | Exit |
| Legacy Diskette A: | | [1.44/1.25 MB 3 1/2"] | Item Specific Help | | |
| > Primary Master | | [20004MB] | | | |
| > Secondary Master | | [CD-ROM] | | | |
| > I/O Device Configuration | | | | | |
| > PCI IRQ Routing | | | | | |
| USB BIOS Legacy Support | | [Enabled] | | | |
| F1 Help ↓ Select Item -/+ Change Values F9 Setup Defaults Esc Exit ← Select Menu Enter Select > Sub-Menu F10 Save and Exit | | | | | |

The table below describes the parameters in this screen. Settings in boldface are the default and suggested parameter settings.

| Parameter | Description |
|--------------------------|---|
| Legacy Diskette A: | Shows the floppy drive information. |
| Primary Master | Shows the hard disk information. Press Enter to access the sub-menu. |
| Secondary Master | Shows the optical drive information. Press Enter to access the sub-menu. |
| I/O Device Configuration | Press Enter to access and set the I/O Device Configuration sub-menu. |
| PCI IRQ Routing | Press Enter to access and set the PCI IRQ Routing sub-menu. |
| USB BIOS Legacy Support | Enables or disables the USB BIOS Legacy Support. Options: Enabled or Disabled |

Primary Master

The Primary Master sub-menu contains parameters related to the hard disk installed in your computer.

| PhoenixBIOS Setup Utility | |
|--|--------------------|
| Advanced | |
| Primary Master [20004MB] | Item Specific Help |
| Type: [Auto] LBA Format | |
| Total Sectors: 39070080 | |
| Maximum Capacity: 20004MB | |
| Multi-Sector Transfers: [16 Sectors] | |
| LBA Mode Control: [Enable] | |
| 32 Bit I/O: [Disabled] | |
| Transfer Mode: [Fast PIO 4] | |
| Ultra DMA Mode: [Disabled] | |
| F1 Help ↵ Select Item -/+ Change Values F9 Setup Defaults Esc Exit ← Select Menu Enter Select > Sub-Menu F10 Save and Exit | |



Caution: The parameters in this screen are for advanced uses only. Typically, you do not need to change the values in this screen. The default setting of **Auto** optimizes all the settings in your hard disk drive.

Secondary Master

The Secondary Master sub-menu contains parameters related to the optical drive installed in your computer.

| PhoenixBIOS Setup Utility | |
|---|--------------------|
| Advanced | |
| Secondary Master [CD-ROM] | Item Specific Help |
| Type: [Auto] | |
| Multi-Sector Transfers: [Disabled] | |
| LBA Mode Control: [Disabled] | |
| 32 Bit I/O: [Disabled] | |
| Transfer Mode: [Standard] | |
| Ultra DMA Mode: [Disabled] | |
| F1 Help ↑ Select Item -/+ Change Values F9 Setup Defaults Esc Exit → Select Menu Enter Select > Sub-Menu F10 Save and Exit | |



Caution: The parameters in this screen are for advanced uses only. Typically, you do not need to change the values in this screen. The default setting of **Auto** optimizes all the settings in your hard disk drive.

I/O Device Configuration

The I/O Device Configuration sub-menu contains parameters that are related to your computer hardware.

| PhoenixBIOS Setup Utility | |
|--|--------------------|
| Advanced | |
| I/O Device Configuration | Item Specific Help |
| Parallel port: [Enable] Mode: [Bi-directional] Base I/O address: [378] Interrupt: [IRQ 7] | |
| F1 Help ↵ Select Item -/+ Change Values F9 Setup Defaults Esc Exit ← Select Menu Enter Select > Sub-Menu F10 Save and Exit | |

| Parameter | Description |
|------------------|--|
| Parallel Port | Enables or disables the parallel port. Options: Enabled or Disabled |
| Mode | Sets the operation mode of the parallel port. Options: Output only, Bi-direction , EPP, or ECP |
| Base I/O Address | Sets the I/O address of the parallel port. Options: 3BC, 378h , or 278h |
| Interrupt | Sets the interrupt request of the parallel port. Options: IRQ 5 or IRQ 7 |

PCI IRQ Routing

The PCI IRQ Routing sub-menu allows you to set the IRQs for PCI devices.

| PhoenixBIOS Setup Utility | |
|--|--------------------|
| Advanced | |
| PCI IRQ Routing | Item Specific Help |
| PCI IRQ A#: [11] PCI IRQ B#: [10] PCI IRQ C#: [11] PCI IRQ D#: [10] PCI IRQ E#: [11] PCI IRQ F#: [10] PCI IRQ G#: [11] PCI IRQ H#: [10] | |
| F1 Help ↑ Select Item -/+ Change Values F9 Setup Defaults Esc Exit ← Select Menu Enter Select > Sub-Menu F10 Save and Exit | |



Caution: The parameters in this screen are for advanced users only. Typically, you do not need to change the values in this screen because these values are already optimized.

Security

The Security screen contains parameters that help safeguard and protect your computer from unauthorized use.

| PhoenixBIOS Setup Utility | | | | | |
|---------------------------|--------------------------------|-------------------------|-----------------|--------------------|------|
| Information | Main | Advanced | Security | Boot | Exit |
| | Set Supervisor Password | | [Enter] | Item Specific Help | |
| | Set User Password | | [Enter] | | |
| | Password on boot: | | [Enable] | | |
| | Set Primary Hard Disk Password | | [Enter] | | |
| F1 Help | ↓ Select Item | -/+ Change Values | | F9 Setup Defaults | |
| Esc Exit | ← Select Menu | Enter Select > Sub-Menu | | F10 Save and Exit | |

The table below describes the parameters in this screen. Settings in boldface are the default and suggested parameter settings.

| Parameter | Description |
|--------------------------------|--|
| Set Supervisor Password | When set, this password protects the BIOS Utility from unauthorized entry. Press Enter to set this password. |
| Set User Password | When set, this password protects the computer from unauthorized entry during boot-up or resume from Hibernation mode. Press Enter to set this password. |
| Password on Boot | When enabled, a password is requested when the system boots up. Options: Enabled or Disabled |
| Set Primary Hard Disk Password | When set, this password prevents the primary hard disk from unauthorized access. It consists of 8 alphanumeric characters. Press Enter to set this password. |

Boot

The Boot menu contains parameter values that determine in what order the bootable devices in your computer start-up.

| PhoenixBIOS Setup Utility | | | | | |
|--|------|----------|----------|--------------------|------|
| Information | Main | Advanced | Security | Boot | Exit |
| +Removable Devices +Hard Drive CD-ROM Drive | | | | Item Specific Help | |
| F1 Help ↑ Select Item -/+ Change Values F9 Setup Defaults Esc Exit ← Select Menu Enter Select > Sub-Menu F10 Save and Exit | | | | | |

Setting the Boot drive sequence

Use the cursor up/down keys to select a boot device, then press ↑ or ↓ to change its order. Items with a “+” sign can be further expanded.

Exit

This menu contains the exit options.

| PhoenixBIOS Setup Utility | | | | | |
|--|------|---------------|----------|-----------------------|-------------|
| Information | Main | Advanced | Security | Boot | Exit |
| Exit Saving Changes Exit Discarding Changes Load Setup Defaults Discard Changes Save Changes | | | | Item Specific Help | |
| F1 Help | | ↓ Select Item | | -/+ Change Values | |
| Esc Exit | | ← Select Menu | | Enter Execute Command | |
| | | | | F9 Setup Defaults | |
| | | | | F10 Save and Exit | |

| Parameter | Description |
|-------------------------|---|
| Exit Saving Changes | Saves your changes and exits the BIOS Utility. |
| Exit Discarding Changes | Discards your changes and exits the BIOS Utility. |
| Load Setup Defaults | Loads default settings for all setup parameters. |
| Discard Changes | Discards your changes. |
| Save Changes | Saves your changes. |

3 Troubleshooting my computer

This chapter instructs you on how to deal with common system problems. Read it before calling a technician if a problem occurs. Solutions to more serious problems require opening up the computer. Do not attempt to open the computer by yourself. Contact your dealer or an authorized service center for assistance.

Frequently-asked questions

The following is a list of possible situations that may arise during the use of your computer. Easy answers and solutions are provided for each one.

I pressed the power switch and opened the display, but the computer does not start or boot-up.

Look at the Power indicator:

- If it is not lit, no power is being applied to the computer. Check the following:
 - If you are running on battery power, it may be low and unable to power the computer. Connect the AC adapter to recharge the battery pack.
 - Make sure that the AC adapter is plugged in properly to the computer and to the power outlet.
- If it is lit, check the following:
 - If the Sleep indicator is lit, the computer is in Sleep mode. Press any key or tap on the touchpad to resume.
 - Is a non-bootable (non-system) diskette in the floppy drive? Remove or replace it with a system diskette and press **Ctrl-Alt-Del** to restart the system.
- The operating system files may be damaged or missing. Insert the startup disk you created during Windows setup into the floppy drive and press **Ctrl-Alt-Del** to restart the system. This will diagnose your system and make necessary fixes.

Nothing appears on the screen.

The computer's power management system automatically blanks the screen to save power. Press any key to turn the display back on.

If pressing a key does not turn the display back on, two things might be the cause:

- The brightness level might be too low. Press **Fn→** to increase the brightness level.
- The display device might be set to an external monitor. Press the display toggle hot key **Fn-F5** to toggle the display back to the computer.

Image is not full-screen.

Make sure that the resolution is set to 1024x768. This is the native resolution of your computer display. Right-click on your Windows desktop and select Properties to bring up the **Display Properties** dialog box. Then click on the Settings tab to make sure that the resolution is set to the appropriate resolution. Resolutions lower than the specified resolution are not full-screen on the computer or on an external monitor.

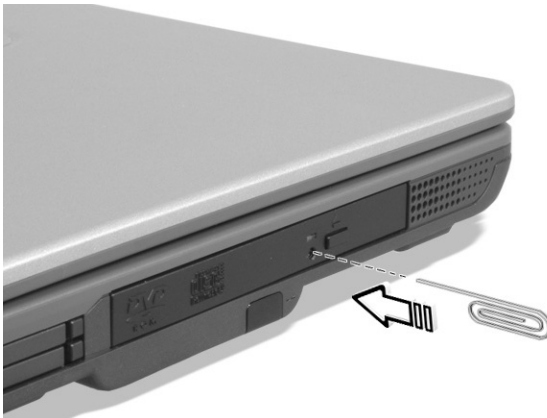
No audio is heard from the computer.

Check the following:

- The volume may be muted. In Windows, look at the volume control (speaker) icon on the taskbar. If it is crossed-out, click on the icon and deselect the Mute option.
- The speakers may be turned off. Press **Fn-F8** to turn the speakers on (this hot key also turns the speakers off).
- The volume level may be too low. In Windows, look at the volume control icon on the taskbar.
- If headphones, earphones or external speakers are connected to the line-out port, the internal speakers automatically turn off.

I want to eject the CD or DVD tray without turning on the power. I cannot eject the CD or DVD tray.

There is a mechanical eject button on the CD-ROM or DVD-ROM drive. Simply insert the tip of a pen or paperclip and push to eject the tray.



The floppy drive cannot access a diskette.

Check the following:

- Make sure the diskette is properly inserted in the floppy drive.
- Make sure the diskette is formatted.
- If the diskette is not the cause of the problem, the floppy drive may be dirty. Clean it using a drive cleaning kit. Follow the instructions included with the kit.

The CD or DVD drive cannot access a disc.

Check the following:

- Make sure the disc is supported by the drive. If your computer has a CD-ROM drive, it can read CDs but cannot read DVDs. If your computer has a DVD drive, it can read DVDs in addition to CDs.
- When placing the CD or DVD in the drive tray, make sure it is secure in the spindle on the drive tray.
- Make sure the CD or DVD is free from scratches or smudges. If the CD or DVD is dirty, clean it using a disc cleaning kit. Remember to follow the instructions included with the kit.
- If the problem does not lie with the disc, your CD or DVD drive may be dirty. Clean it using a drive cleaning kit. Follow the instructions included with the kit.

The keyboard does not respond.

Try attaching an external keyboard to the USB connector on the computer's rear. If it works, contact your dealer or an authorized service center as the internal keyboard cable may be loose.

The serial mouse does not work.

Check the following:

- Make sure that the serial cable is plugged securely into the serial port.
- During the POST, press **F2** to access the BIOS Utility and verify that the serial port is enabled. See "BIOS Utility" on page 49 for more details.

The printer does not work.

Check the following:

- Make sure that the printer is connected to a power outlet and that it is turned on.
- Depending on your connection (USB or parallel), make sure that the printer cable is connected securely to the appropriate port on your computer and the corresponding port on the printer.
- During POST, press **F2** to access the BIOS Utility and verify that the parallel port is enabled if you use a parallel printer.

I want to set up my location to use the internal modem.

To properly use your communications software, you need to set up your location:

- 1** Click on **Start, Control Panel**.
- 2** Double-click on **Phone and Modem Options**.
- 3** Click on the **Dialing Rules** tab and begin setting up your location.

Refer to Windows Help and Support.

Requesting service

International Travelers Warranty (ITW)

Your computer is backed by an International Traveler's Warranty (ITW) that gives you security and peace of mind when traveling. Our worldwide network of service centers are there to give you a helping hand.

An ITW passport comes with your computer. This passport contains all you need to know about the ITW program. A list of available, authorized service centers is in this handy booklet. Read this passport thoroughly.

Always have your ITW passport on hand, especially when you travel to receive the benefits from our support centers. Place your proof-of-purchase in the flap located inside the front cover of the ITW passport.

If the country you are traveling in does not have an Acer-authorized ITW service site, you can still get in contact with our offices worldwide.

Please consult www.acersupport.com

Before you call

Please have the following information available when you call Acer for online service, and please be at your computer when you call. With your support, we can reduce the amount of time a call takes and help solve your problems efficiently.

If there are error messages or beeps reported by your computer, write them down as they appear on the screen (or the number and sequence in the case of beeps).

You are required to provide the following information:

Name: _____

Address: _____

Telephone number: _____

Machine and model type: _____

Serial number: _____

Date of purchase: _____

Appendix A
SoftDial

This appendix introduces the Acer Tablet PC SoftDial, a unique new tool to increase the ease of use of your Tablet PC.

The Acer Tablet PC SoftDial?

Acer's Tablet PC SoftDial is a radial device that manages program icons, system settings/utilities, file folders and network locations. **(INSERT IMAGE)**

Surrounding the central Acer brand name logo are three levels of functionality (level 1, level 2, and level 3) numbered from inner to outer.

You will notice, when the EMR stylus is moved near the SoftDial, that the Acer brand name fades and is replaced by a number of arrows. **(INSERT TWO IMAGES)**

- The center arrow lets you drag the SoftDial wherever you want it on the the screen. Simply press and hold the EMR stylus to the **(INSERT IMAGE)** and drag it.
- The top arrow (12 o'clock position) vertically flips the display output 180 degrees. This means what was at the top of the screen, will now be at the bottom. Simply press the **(INSERT IMAGE)**.
- The left arrow (9 o'clock position) rotates the display output 90 degrees counter-clockwise. This changes the output from landscape to portrait or vice versa. Simply press the **(INSERT IMAGE)**.
- The right arrow (3 o'clock position) rotates the display output 90 degrees clockwise. This changes the output from landscape to portrait or vice versa. Simply press the **(INSERT IMAGE)**.

Appendix B
Specifications

This appendix lists the general specifications of your computer.

Microprocessor

- Intel® Pentium® M processor with 1 MB L2 cache

Memory

- Main memory expandable to 2 GB
- Two DDR SDRAM DIMM slots
- Supports 256MB, 512MB, 1GB DDR SDRAM modules
- 512 KB Flash ROM BIOS; Shadow RAM support

Data storage

- One high-capacity, Enhanced-IDE hard disk
- One 5.25-inch internal CD-ROM, DVD-ROM, DVD/CD-RW combo, DVD-RW, or DVD dual drive

Display and video

- 14.1" Thin-Film Transistor (TFT) liquid crystal-display (LCD) supporting pen-based input, with 32-bit true-color at 1024x768 eXtended Graphics Array (XGA) resolution
- or
- 14.1" Thin-Film Transistor (TFT) liquid crystal-display (LCD) supporting pen-based input, with 32-bit true-color at 1400x1050 Super eXtended Graphics Array (SXGA) resolution
- Integrated VGA controller with Dynamic Video Memory Allocation technology up to 64 MB
- Simultaneous LCD and external display support
- Dual view support

Audio

- 16-bit AC'97 stereo audio
- Dual stereo speakers
- Windows Sound System-compatible
- Separate audio ports for line-out, line-in devices
- Built-in internal microphone

Keyboard and pointing device

- 87/88/90-key Windows keyboard with 101/102 key emulation

- Ergonomically-centered touchpad pointing device with two buttons and 4-way scroll button

I/O ports

- One Card bus type II card slot
- One smart-card slot
- One RJ-11 phone jack (V.90/V.92, 56Kbps modem)
- One RJ-45 network jack (Gigabit Ethernet)
- One DC-in jack (AC adapter)
- One external monitor (VGA) port
- One S-video TV out port
- One 100-pin port replicator connector
- One line-out (headphone) jack (3.5mm minijack)
- One line-in (microphone) jack (3.5mm minijack)
- Two USB 2.0 ports
- One 4-pin IEEE 1394 port
- One infrared (FIR) port

Weight and dimensions

- 2.83 kg (6.23 lbs) for 14.1" TFT model
- 326 (W) x 272 (D) x 33.4~35.9 (H) mm

Environment

- Temperature
 - Operating: 5°C ~ 35°C
 - Non-operating: -10°C ~ 60°C
- Humidity (non-condensing)
 - Operating: 20% ~ 85% RH
 - Non-operating: 20% ~ 85% RH

System

- Microsoft Windows XP Pro Tablet edition SP1
- ACPI compliant BIOS
- Phoenix BIOS

- Suspend to RAM/Disk

Power

- Battery pack
 - 8 cell Li-Ion battery pack
 - 5.5 hours operating time with Battery mark 4.0
- AC adapter
 - 65-Watt
 - Auto sensing 100~240V AC, 50~60Hz

Wireless Communications

- Optional Intel PRO/Wireless 2100 or 2100A module
- Optional MDC Bluetooth module (includes built-in antenna)
- Third party 802.11 a+g ready

Options

- 256MB/512MB/1GB memory upgrade module
- Additional AC adapter, Battery, or Weight-saver
- Hot-swappable optical drive
 - 24x CD-ROM module
 - 8x DVD module
 - DVD/CD-RW combo module
 - DVD \pm RW module
- Additional HDD module

Appendix C

Notices

This appendix lists the general notices of your computer.

FCC notice

This device has been tested and found to comply with the limits for a Class B digital device pursuant to Part 15 of the FCC Rules. These limits are designed to provide reasonable protection against harmful interference in a residential installation. This device generates, uses, and can radiate radio frequency energy and, if not installed and used in accordance with the instructions, may cause harmful interference to radio communications.

However, there is no guarantee that interference will not occur in a particular installation. If this device does cause harmful interference to radio or television reception, which can be determined by turning the device off and on, the user is encouraged to try to correct the interference by one or more of the following measures:

- Reorient or relocate the receiving antenna
- Increase the separation between the device and receiver
- Connect the device into an outlet on a circuit different from that to which the receiver is connected
- Consult the dealer or an experienced radio/television technician for help

Notice: Shielded cables

All connections to other computing devices must be made using shielded cables to maintain compliance with FCC regulations.

Notice: Peripheral devices

Only peripherals (input/output devices, terminals, printers, etc.) certified to comply with the Class B limits may be attached to this equipment. Operation with non-certified peripherals is likely to result in interference to radio and TV reception.

Caution

Changes or modifications not expressly approved by the manufacturer could void the user's authority, which is granted by the Federal Communications Commission, to operate this computer.

Use conditions

This part complies with Part 15 of the FCC Rules. Operation is subject to the following two conditions: (1) this device may not cause harmful interference, and (2) this device must accept any interference received, including interference that may cause undesired operation.

Notice: Canadian users

This Class B digital apparatus meets all requirements of the Canadian Interference-Causing Equipment Regulations.

Remarque à l'intention des utilisateurs canadiens

Cet appareil numérique de la classe B respecte toutes les exigences du Règlement sur le matériel brouilleur du Canada.

Modem notices

FCC

This equipment complies with Part 68 of the FCC rules. Located on the bottom side of the modem is a label that contains, among other information, the FCC Registration Number and Ringer Equivalence Number (REN) for this equipment. Upon request, you must provide this information to your telephone company.

If your telephone equipment causes harm to the telephone network, the telephone company may discontinue your service temporarily. If possible, they will notify you in advance. But, if advance notice is not practical, you will be notified as soon as possible. You will also be informed of your right to file a complaint with the FCC.

Your telephone company may make changes in its facilities, equipment, operations, or procedures that could affect the proper functioning of your equipment. If they do, you will be notified in advance to give you an opportunity to maintain uninterrupted telephone service.

If this equipment should fail to operate properly, disconnect the equipment from the phone line to determine if it is causing the problem. If the problem is with the equipment, discontinue use and contact your dealer or vendor.

TBR 21

This equipment has been approved [Council Decision 98/482/EC - "TBR 21"] for pan-European single terminal connection to the Public Switched Telephone Network (PSTN). However, due to differences between the individual PSTNs provided in different countries, the approval does not, of itself, give an unconditional assurance of successful operation on every PSTN termination point. In the event of problems, you should contact your equipment supplier in the first instance.

Important safety instructions

Read these instructions carefully. Save these instructions for future reference.

- 1** Follow all warnings and instructions marked on the product.
- 2** Unplug this product from the wall outlet before cleaning. Do not use liquid cleaners or aerosol cleaners. Use a damp cloth for cleaning.
- 3** Do not use this product near water.
- 4** Do not place this product on an unstable cart, stand, or table. The product may fall, causing serious damage to the product.
- 5** Slots and openings in the cabinet and the back or bottom are provided for ventilation; to ensure reliable operation of the product and to protect it from overheating, these openings must not be blocked or covered. The openings should never be blocked by placing the product on a bed, sofa, rug, or other similar surface. This product should never be placed near or over a radiator or heat register, or in a built-in installation unless proper ventilation is provided.
- 6** This product should be operated from the type of power indicated on the marking label. If you are not sure of the type of power available, consult your dealer or local power company.
- 7** Do not allow anything to rest on the power cord. Do not locate this product where persons will walk on the cord.
- 8** If an extension cord is used with this product, make sure that the total ampere rating of the equipment plugged into the extension cord does not exceed the extension cord ampere rating. Also, make sure that the total rating of all products plugged into the wall outlet does not exceed the fuse rating.
- 9** Never push objects of any kind into this product through cabinet slots as they may touch dangerous voltage points or short out parts that could result in a fire or electric shock. Never spill liquid of any kind on the product.
- 10** Do not attempt to service this product yourself, as opening or removing covers may expose you to dangerous voltage points or other risks. Refer all servicing to qualified service personnel.
- 11** Unplug this product from the wall outlet and refer servicing to qualified service personnel under the following conditions:
 - a** When the power cord or plug is damaged or frayed
 - b** If liquid has been spilled into the product
 - c** If the product has been exposed to rain or water

- d** If the product does not operate normally when the operating instructions are followed. Adjust only those controls that are covered by the operating instructions since improper adjustment of other controls may result in damage and will often require extensive work by a qualified technician to restore the product to normal condition.
 - e** If the product has been dropped or the cabinet has been damaged
 - f** If the product exhibits a distinct change in performance, indicating a need for service.
- 12** Replace the battery with the same type as the product's battery we recommend. Use of another battery may present a risk of fire or explosion. Refer battery replacement to a qualified serviceman.
- 13** Warning! Batteries may explode if not handled properly. Do not disassemble or dispose of them in fire. Keep them away from children and dispose of used batteries promptly.
- 14** Use only the proper type of power supply cord set (provided in your accessories box) for this unit. It should be a detachable type: UL listed/CSA certified, type SPT-2, rated 7A 125V minimum, VDE approved or its equivalent. Maximum length is 15 feet (4.6 meters).

Laser compliance statement

The CD or DVD drive used with this computer is a laser product. The CD or DVD drive's classification label (shown below) is located on the drive.

CLASS 1 LASER PRODUCT

CAUTION: VISIBLE AND INVISIBLE LASER RADIATION WHEN OPEN. AVOID EXPOSURE TO BEAM.

APPAREIL A LASER DE CLASSE 1 PRODUIT

LASERATTENTION: RADIATION DU FAISCEAU LASER INVISIBLE EN CAS D'OUVERTURE. EVITER TOUTE EXPOSITION AUX RAYONS.

LUOKAN 1 LASERLÄITE LASER KLASSE 1

VORSICHT: UNSICHTBARE LASERSTRAHLUNG, WENN ABDECKUNG GEÖFFNET NICHT DEM STRAHLL AUSSETZEN

PRODUCTO LÁSER DE LA CLASE I

ADVERTENCIA: RADIACIÓN LÁSER INVISIBLE AL SER ABIERTO. EVITE EXPONERSE A LOS RAYOS.

ADVARSSEL: LASERSTRÅLING VEDÅBNING SE IKKE IND I STRÅLEN.

VARO! LAVATTAESSA OLET ALLTINA LASERSÄTEILYLLE.

VARNING: LASERSTRÅLNING NÅR DENNA DEL ÄR ÖPPNAD ÄLÅ TUIJOTA SÄTEESEENSTIRRA EJ IN I STRÅLEN

WARNING: LASERSTRÅLNING NAR DENNA DEL ÄR ÖPPNADSTIRRA EJ IN I STRÅLEN

ADVARSEL: LASERSTRÅLING NAR DEKSEL ÅPNESSTIRR IKKE INN I STRÅLEN

Lithium battery statement

The TravelMate 240P/250P series uses the lithium battery, models BTP-58A1, BTP-59A1 and BTP-60A1 only.

CAUTION

Danger of explosion if battery is incorrectly replaced. Replace only with the same or equivalent type recommended by the manufacturer. Discard used batteries according to the manufacturer's instructions.

ADVARSEL!

Lithiumbatteri - Eksplosjonsfare ved feilagtig håndtering. Udsiftning må kun ske med batteri af samme fabrikat og type. Léver det brugte batteri tilbage til leverandøren.

ADVARSEL

Eksplosjonsfare ved feilaktig skifte av batteri. Benytt samme batteritype eller en tilsvarende type anbefalt av apparatfabrikanten. Brukte batterier kasseres i henhold til fabrikantens instruksjoner.

WARNING

Explosionsfara vid felaktigt batteribyte. Använd samma batterityp eller en ekvivalent typ som rekommenderas av apparattillverkaren. Kassera använt batteri enligt fabrikantens instruktion.

VAROITUS

Päristo voi räjähtää, jos se on virheellisesti asennettu. Vaihda paristo ainoastaan laitevalmistajan suosittelemaan tyyppiin. Hävitä käytetty paristo valmistajan ohjeiden mukaisesti.

VORSICHT!

Explosionsgefahr bei unsachgemäßen Austausch der Batterie Ersatz nur durch denselben oder einem vom Hersteller empfohlenem ähnlichen Typ. Entsorgung gebrauchter Batterien nach Angaben des Herstellers.

LCD pixel statement

The LCD unit is produced with high-precision manufacturing techniques. Nevertheless, some pixels may occasionally misfire or appear as black or colored dots. This has no effect on the recorded image and does not constitute a malfunction.

Macrovision copyright protection notice

This product incorporates copyright protection technology that is protected by method claims of certain U.S. patents and other intellectual property rights owned by Macrovision Corporation and other rights owners. Use of this copyright protection technology must be authorized by Macrovision Corporation, and is intended for home and other limited viewing uses only unless otherwise authorized by Macrovision Corporation. Reverse engineering or disassembly is prohibited.

Apparatus Claims of U.S. Patent Nos. 4,631,603, 4,577,216, 4,819,098, and 4,907,093 licensed for limited viewing uses only.

A-Tick notice

For safety reasons, only connect headsets with a telecommunications compliance label. This includes customer equipment previously labelled permitted or certified. The unit shall be connected to Telecommunication Network through a line cord which meets the requirements of ACA Technical Standard TS008. Australian approved mains cord set shall be used with the equipment.

Note: Below regulatory information is for models with wireless LAN and/or Bluetooth only.

Regulatory Information

The Wireless module must be installed and used in strict accordance with the manufacturer's instructions. This device complies with the following radio frequency and safety standards.

Canada - Industry Canada (IC)

- This device complies with RSS 210 of Industry Canada.

Europe - EU Declaration of Conformity

This device complies with the standards listed below, following the provisions of the EMC Directive 89/336/EEC:

- ETSI EN 301 489-1/17
- ETSI EN 300 328-2
- EN 300 328 V1.4.1.

USA - Federal Communications Commission (FCC)

This device complies with Part 15 of FCC Rules. Operation of the devices in an Wireless LAN System is subject to the following two conditions:

- This device may not cause harmful interference.
- This device must accept any interference that may cause undesired operation.

Exposure to Radio Frequency Radiation

The radiated output power of the Wireless module is far below the FCC radio frequency exposure limits. Nevertheless, the Wireless module shall be used in such a manner that the potential for human contact during normal operation is minimized.

The transmitter and the antenna are permanently installed inside the notebook, and are specific for this model (not for generic computer). The antenna of this device is installed on the top of the LCD display. This transmitter must not be co-located or operating in conjunction with any other antenna or transmitter.

--

This equipment has been tested and found to comply with the limits for a Class B digital device, pursuant to Part 15 of the FCC Rules. These limits are designed to provide reasonable protection against harmful interference in a residential installation. This equipment generates, uses and can radiate radio frequency energy and, if not installed and used in accordance with the instructions, may cause harmful interference to radio communications. However, there is no guarantee that interference will not occur in a particular installation. If this equipment does cause harmful interference to radio or television reception, which can be determined by turning the equipment off and on, the user is encouraged to try to correct the interference by one of the following measures:

- Reorient or relocate the receiving antenna.
- Increase the separation between the equipment and receiver.
- Connect the equipment into an outlet on a circuit different from that to which the receiver is connected.
- Consult the dealer or an experienced radio/TV technician for help.

FCC Caution: To assure continued compliance, any changes or modifications not expressly approved by the party responsible for compliance could void the user's authority to operate this equipment (example - use only shielded interface cables when connecting to computer or peripheral devices).

This device complies with Part 15 of the FCC Rules. Operation is subject to the following two conditions: (1) This device may not cause harmful interference, and (2) this device must accept any interference received, including interference that may cause undesired operation.

Index

A

- AC adapter
 - caring for v
- audio 28
 - troubleshooting 64

B

- battery pack
 - caring for v
 - charging indicator 15
- BIOS Utility 49– 60
 - Advanced menu
 - i/o device configuration 56
 - pci irq routing 57
 - primary master 54
 - secondary master 55
 - advanced menu 53
 - boot menu 59
 - exit menu 60
 - main menu 51
 - navigating 49
 - security menu 58
- BIOS utility 49
- brightness
 - hotkeys 21

C

- caps lock 17
 - on indicator 15
- care
 - AC adapter v
 - battery pack v
 - computer iv
- CD
 - troubleshooting 65
- CD-ROM
 - ejecting 26
 - ejecting manually 64
 - troubleshooting 64
- cleaning
 - computer v
- computer
 - bringing to meetings 32

- caring for iv
- cleaning v
- disconnecting 31
- features 3, 12
- indicators 14
- keyboards 17
- moving around 31
- on indicator 14
- performance 12
- security 36
- setting up a home office 33
- taking home 32
- traveling internationally 34
- traveling on local trips 34
- troubleshooting 62
- turning off iv

CPU 50

D

- date
 - setting in BIOS Utility 52
- display
 - hotkeys 21
 - troubleshooting 63, 64
- DVD 27
 - troubleshooting 65
- DVD movies
 - playing 27
- DVD RW drive 12

E

- Ethernet 42
- Euro 21, 22

F

- FAQ. See frequently-asked questions
- floppy drive
 - troubleshooting 65
- frequently-asked questions 63
- front view 3

H

- hard disk 26
- help
 - online services 67
- Hibernation mode
 - hotkey 20
- hotkeys 20

I

indicator lights 14
ITW. See warranty

K

keyboard 17
 embedded numeric keypad 18
 hotkeys 20
 lock keys 17
 troubleshooting 65
 Windows keys 19

L

LEDs 14

M

media access
 on indicator 14
memory
 installing 45– 46
 upgrading 44
modem 41
mouse
 troubleshooting 65

N

network 42
Notebook Manager 47
 hotkey 20
notice
 DVD copyright protection 86
num lock 17
 on indicator 15
numeric keypad
 embedded 18
 num lock 18

O

online services 67
optical drive 26
options
 memory upgrade 44

P

parallel port
 setting in BIOS Utility 56
PC Card 43
 ejecting 43
 inserting 43

ports 41
POST (power-on self-test) 49
printer

 troubleshooting 65
problems 63
 CD 65
 CD-ROM 64
 diskette 65
 display 63, 64
 DVD 65
 floppy drive 65
 keyboard 65
 printer 65
 serial mouse 65
 startup 63
 troubleshooting 62

Q

questions
 setting location for modem use 66

S

safety
 CD-ROM 84
 FCC notice 81
 general instructions 83
 modem notices 82
scroll lock 17
security
 keylock 36
service
 when to call vi
speakers
 hotkey 21
 troubleshooting 64
specifications 70, 74
Standby mode
 hotkey 20
 status indicator 14
status indicators 14
storage 26
 CD, DVD, or DVD/CD-RW combo drive 26
 hard disk 26
support
 information 67

T

- time
 - setting in BIOS Utility 52
- touchpad 24
 - hotkey 21
 - using 24– 25
- travel
 - international flights 34
 - local trips 34
- troubleshooting 62

U

- universal serial bus 42
- Using computer in tablet mode 9
- utility

BIOS Setup 49– 60

V

- view
 - front 4
 - left 4
 - rear 6
 - right 5

W

- warranty
 - International Traveler's Warrant-
ty 67
- Windows keys 19

