

LTK11 Antenna Gain pattern





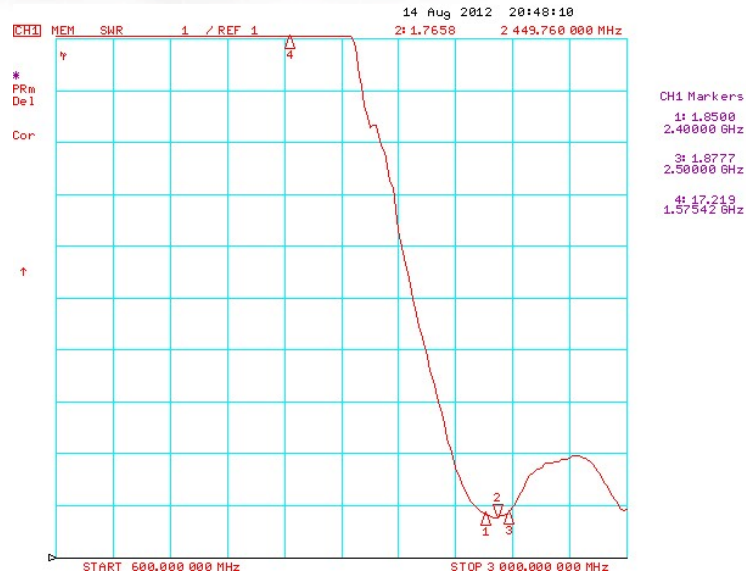
Description

	Main Antenna	AUX Antenna
Antenna Type	PIFA antenna	PIFA antenna
Brand	WEISON	WEISON
Model	Main antenna on board	WEISON: : GY196HT0321-017 WISTRON : 25.90AF0.001

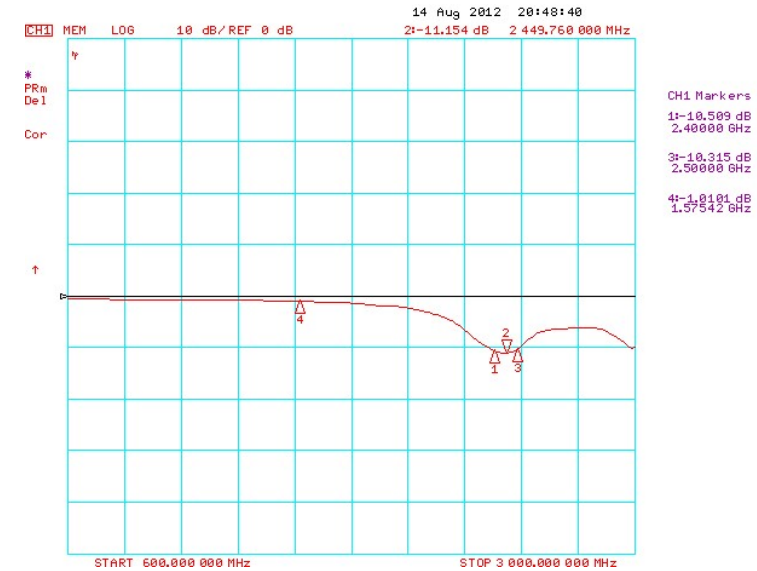


WIFI Main Antenna S11

-VSWR



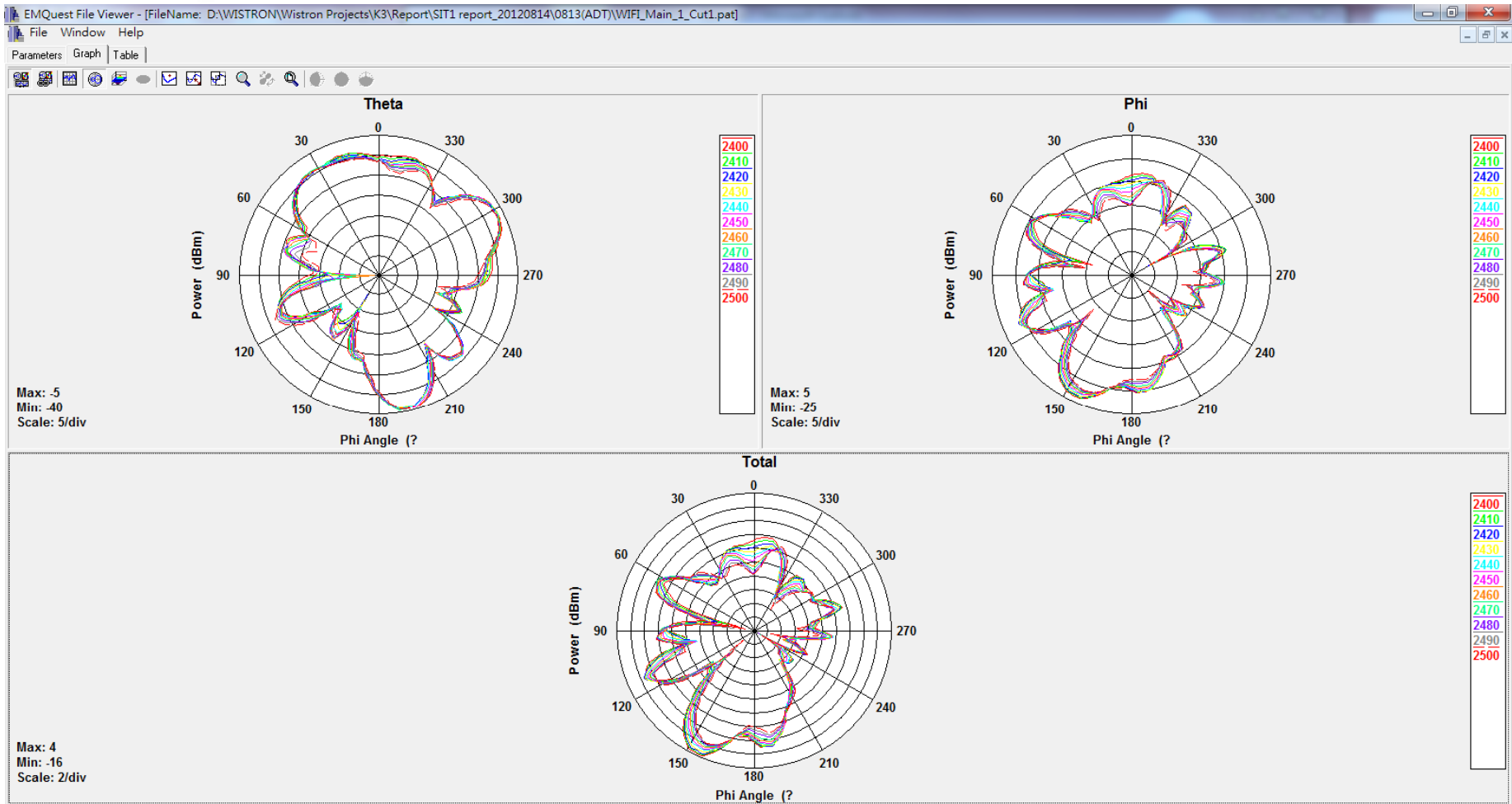
-Return Loss



WiFi_Main											
Frequency (MHz)	2400.00	2410.00	2420.00	2430.00	2440.00	2450.00	2460.00	2470.00	2480.00	2490.00	2500.00
Point Values											
Ant. Port Input Pwr. (dBm)	0.00	0.00	0.00	0.00	0.00	0.00	0.00	0.00	0.00	0.00	0.00
Tot. Rad. Pwr. (dBm)	-2.42	-2.55	-2.64	-2.67	-2.73	-2.72	-2.77	-2.77	-2.89	-2.92	-3.01
Peak EIRP (dBm)	4.64	4.45	4.33	4.27	4.16	4.09	3.98	3.87	3.63	3.46	3.27
Directivity (dBi)	7.06	7.00	6.96	6.94	6.89	6.81	6.74	6.64	6.52	6.38	6.28
Efficiency (dB)	-2.42	-2.55	-2.64	-2.67	-2.73	-2.72	-2.77	-2.77	-2.89	-2.92	-3.01
Efficiency (%)	57.23	55.55	54.48	54.08	53.35	53.45	52.90	52.91	51.41	51.01	50.01
Gain (dBi)	4.64	4.45	4.33	4.27	4.16	4.09	3.98	3.87	3.63	3.46	3.27
NHPRP 1/4 (dBm)	-3.73	-3.86	-3.95	-4.00	-4.08	-4.10	-4.16	-4.18	-4.32	-4.37	-4.47
NHPRP 1/6 (dBm)	-5.26	-5.39	-5.48	-5.53	-5.63	-5.66	-5.75	-5.78	-5.94	-6.00	-6.11
NHPRP 1/8 (dBm)	-6.58	-6.70	-6.78	-6.84	-6.95	-6.99	-7.09	-7.13	-7.29	-7.36	-7.47
Upper Hem. PRP (dBm)	-5.67	-5.81	-5.90	-5.94	-6.01	-6.01	-6.06	-6.06	-6.19	-6.23	-6.32
Lower Hem. PRP (dBm)	-5.21	-5.33	-5.41	-5.43	-5.48	-5.47	-5.51	-5.50	-5.63	-5.65	-5.74

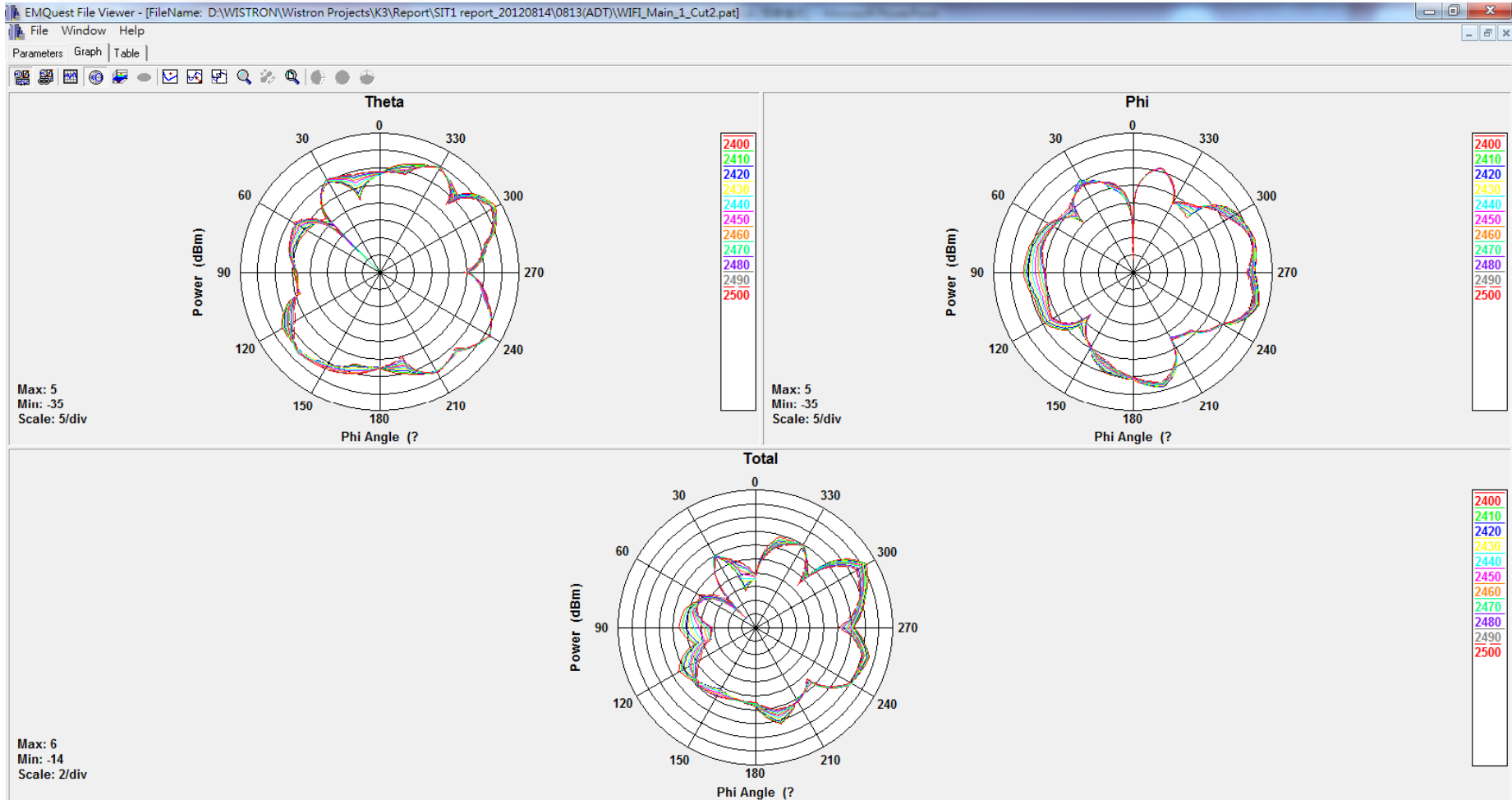


Main Antenna pattern (XY)



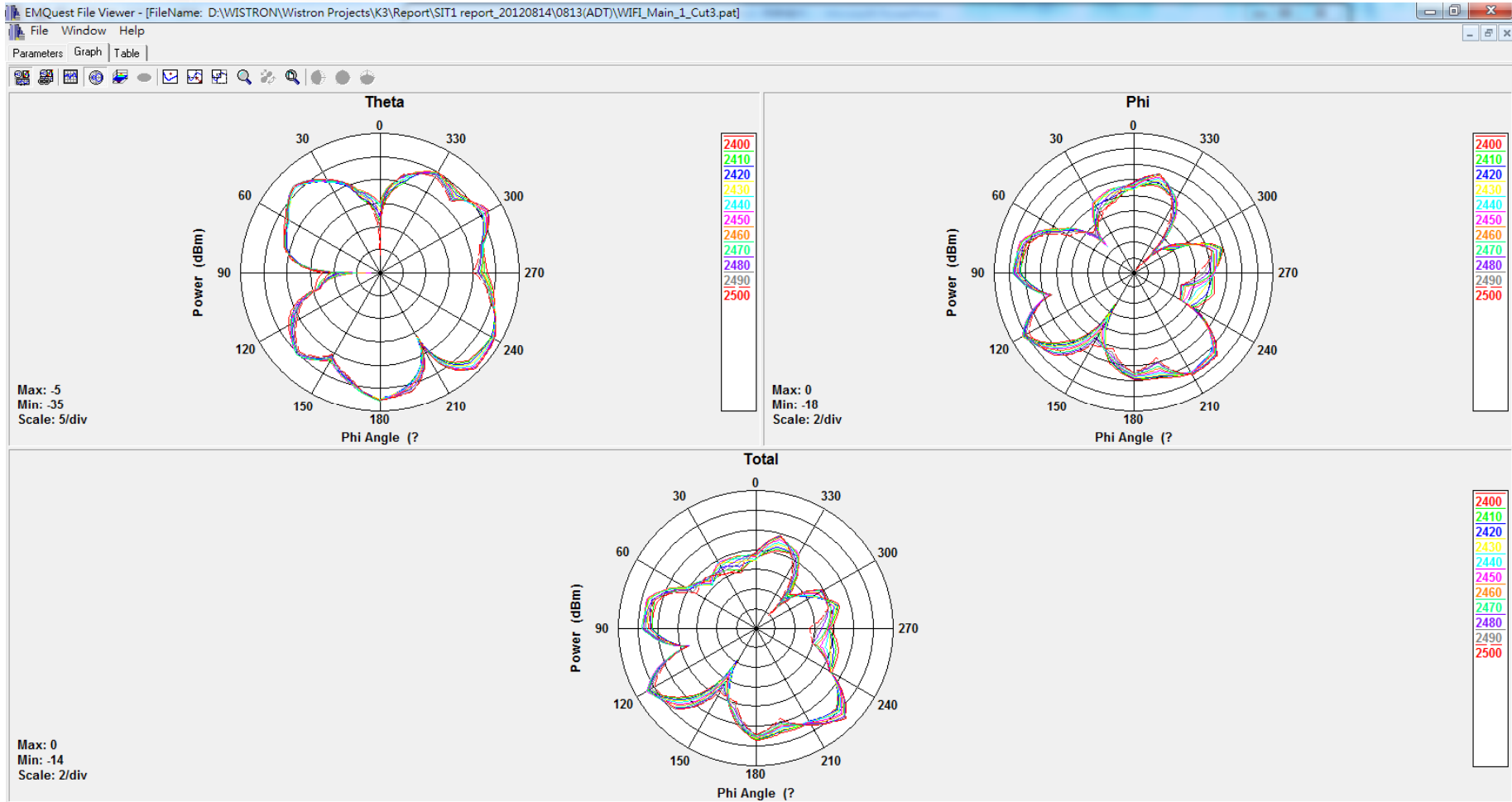


Main Antenna pattern (XZ)





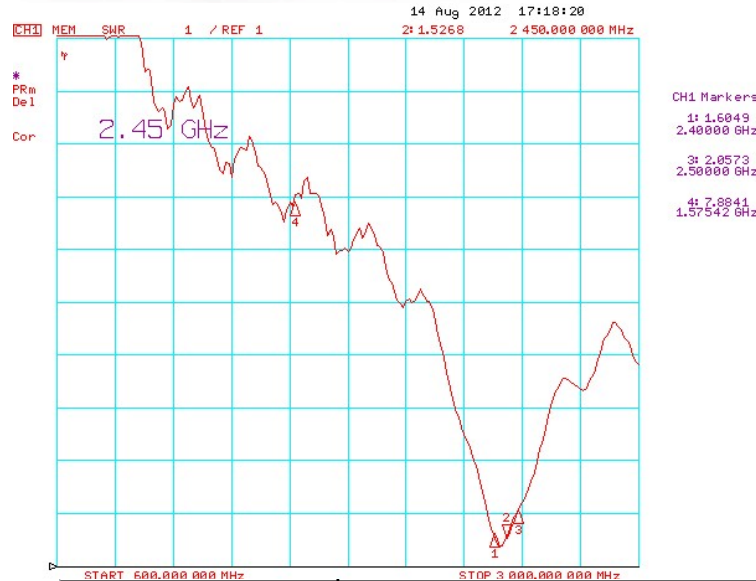
Main Antenna pattern (YZ)



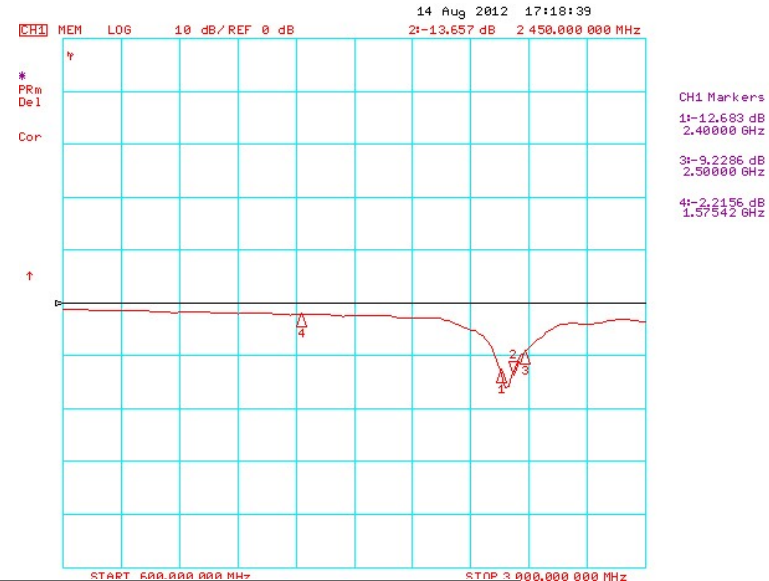


WiFi AUX Antenna S11

-VSWR



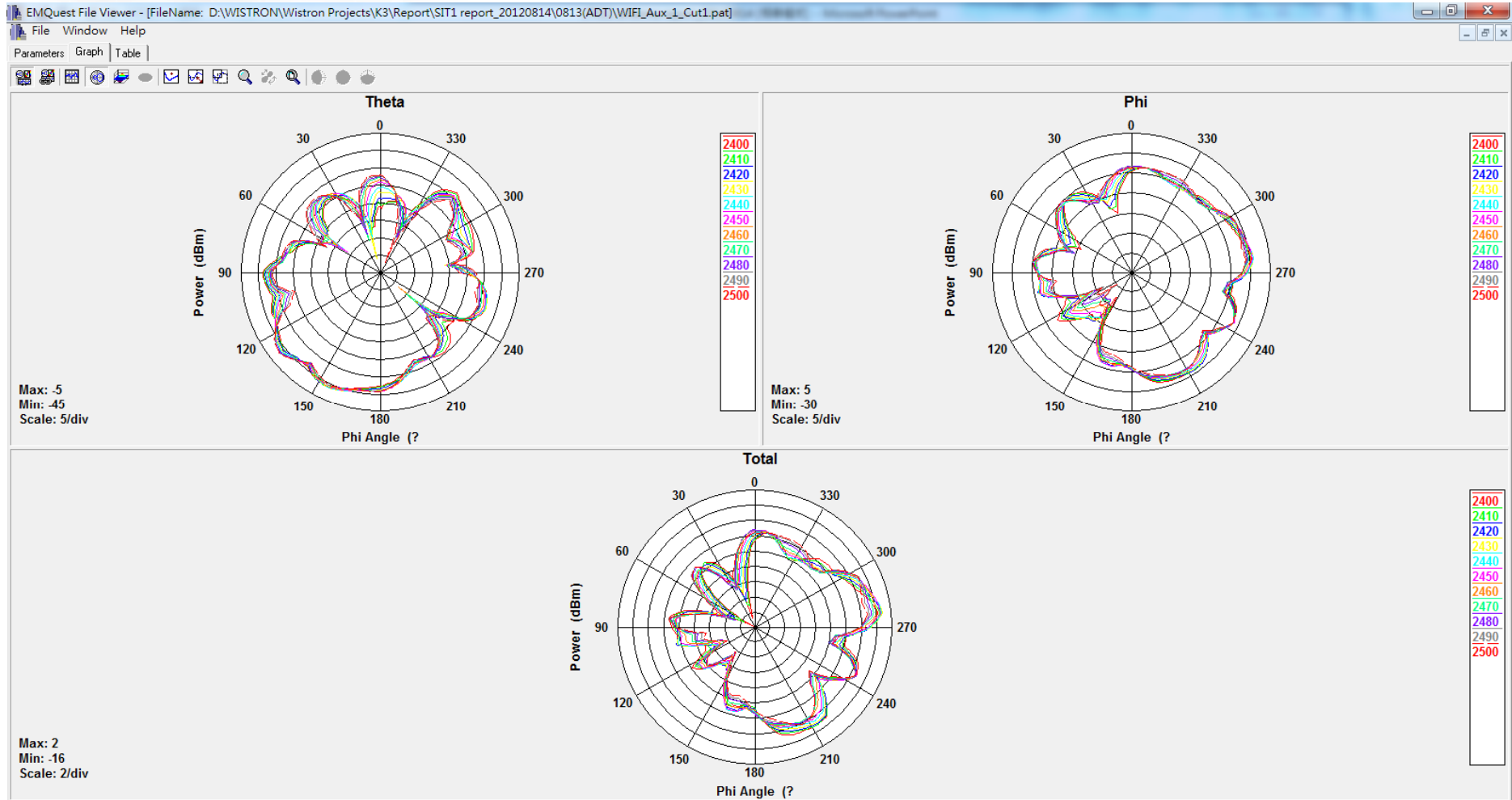
-Return Loss



	WiFi Aux										
Frequency (MHz)	2400.00	2410.00	2420.00	2430.00	2440.00	2450.00	2460.00	2470.00	2480.00	2490.00	2500.00
Point Values											
Ant. Port Input Pwr. (dBm)	0.00	0.00	0.00	0.00	0.00	0.00	0.00	0.00	0.00	0.00	0.00
Tot. Rad. Pwr. (dBm)	-3.57	-3.55	-3.50	-3.48	-3.50	-3.51	-3.68	-3.82	-3.81	-3.79	-3.80
Peak EIRP (dBm)	1.89	1.73	1.62	1.54	1.40	1.27	1.04	0.75	0.63	0.61	0.64
Directivity (dBi)	5.46	5.28	5.12	5.02	4.90	4.78	4.72	4.57	4.44	4.39	4.44
Efficiency (dB)	-3.57	-3.55	-3.50	-3.48	-3.50	-3.51	-3.68	-3.82	-3.81	-3.79	-3.80
Efficiency (%)	43.93	44.11	44.67	44.89	44.69	44.61	42.87	41.45	41.59	41.82	41.69
Gain (dBi)	1.89	1.73	1.62	1.54	1.40	1.27	1.04	0.75	0.63	0.61	0.64
NHPRP 1/4 (dBm)	-5.24	-5.20	-5.13	-5.09	-5.10	-5.10	-5.27	-5.40	-5.38	-5.35	-5.36
NHPRP 1/6 (dBm)	-7.07	-7.01	-6.94	-6.91	-6.93	-6.94	-7.12	-7.25	-7.22	-7.19	-7.20
NHPRP 1/8 (dBm)	-8.34	-8.29	-8.23	-8.21	-8.25	-8.28	-8.47	-8.61	-8.59	-8.55	-8.56
Upper Hem. PRP (dBm)	-6.68	-6.66	-6.60	-6.57	-6.59	-6.59	-6.74	-6.88	-6.85	-6.82	-6.82
Lower Hem. PRP (dBm)	-6.49	-6.47	-6.42	-6.41	-6.43	-6.45	-6.63	-6.79	-6.79	-6.78	-6.80



AUX Antenna pattern (XY)





AUX Antenna pattern (XZ)





AUX Antenna pattern (YZ)

