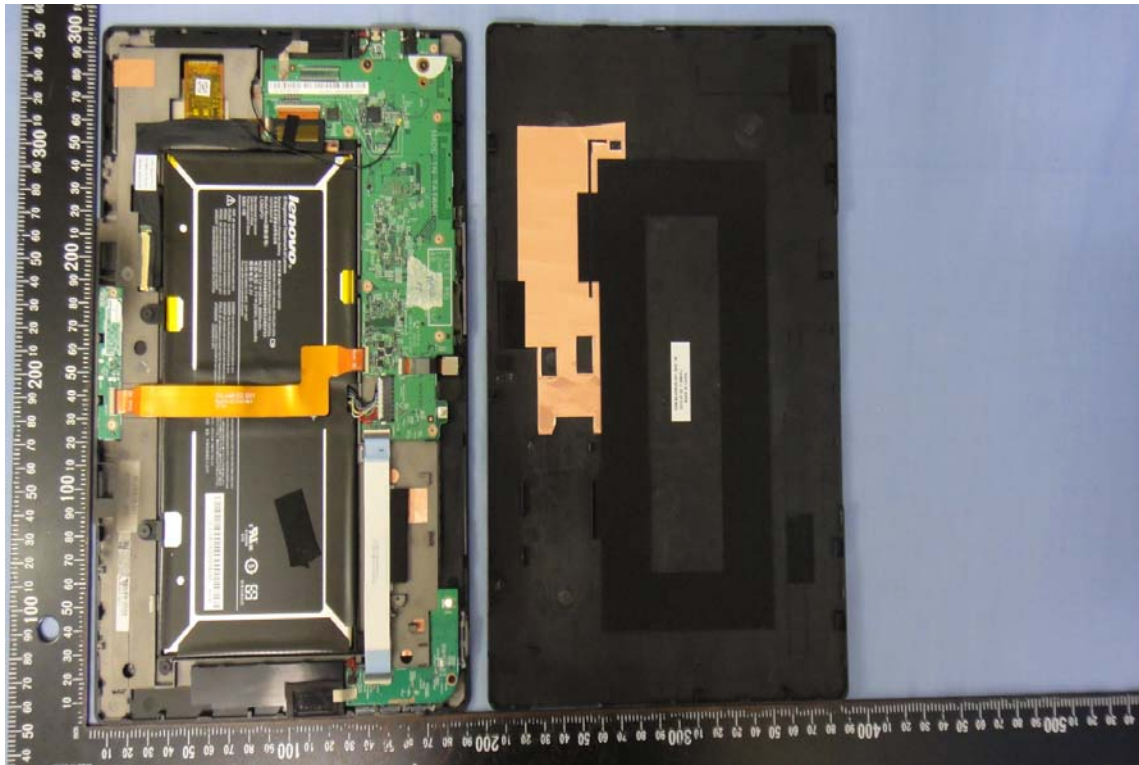
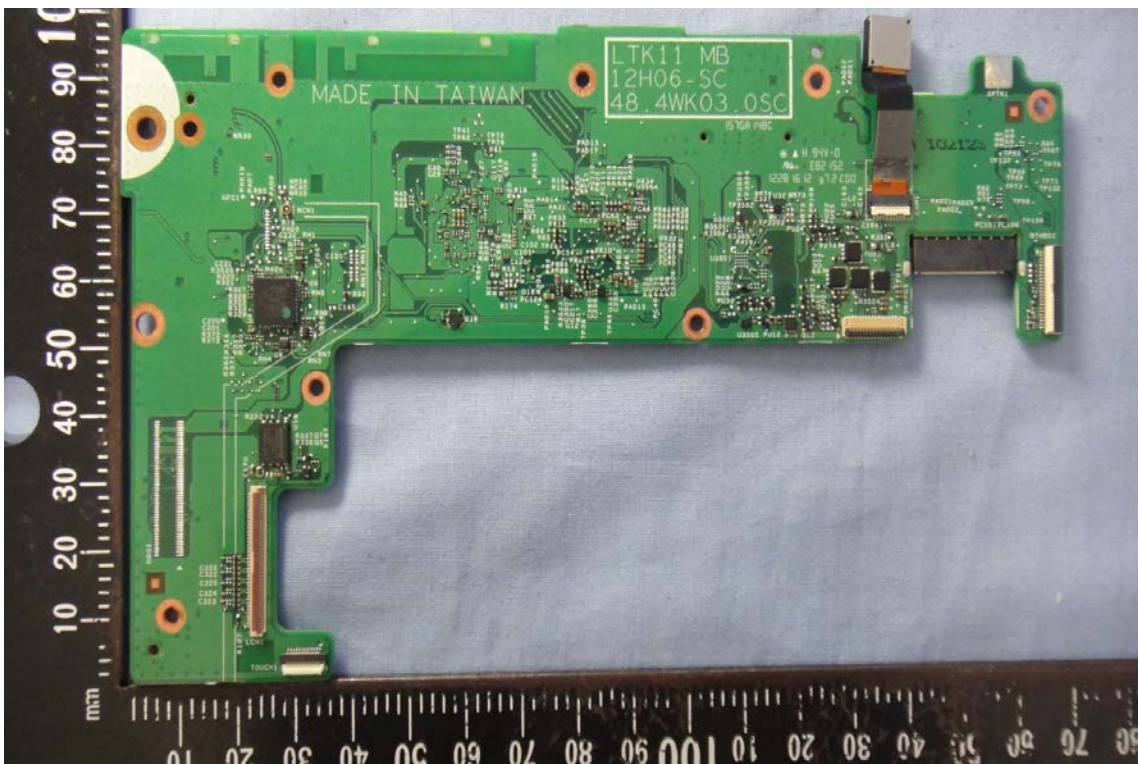
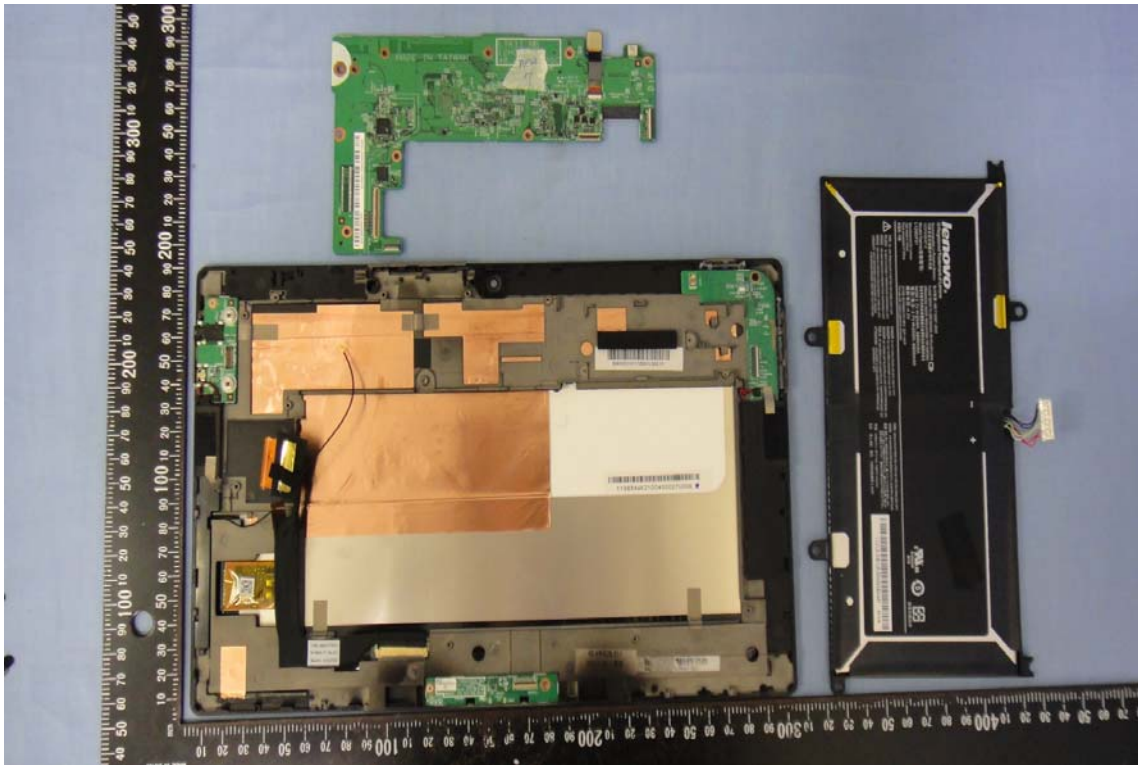


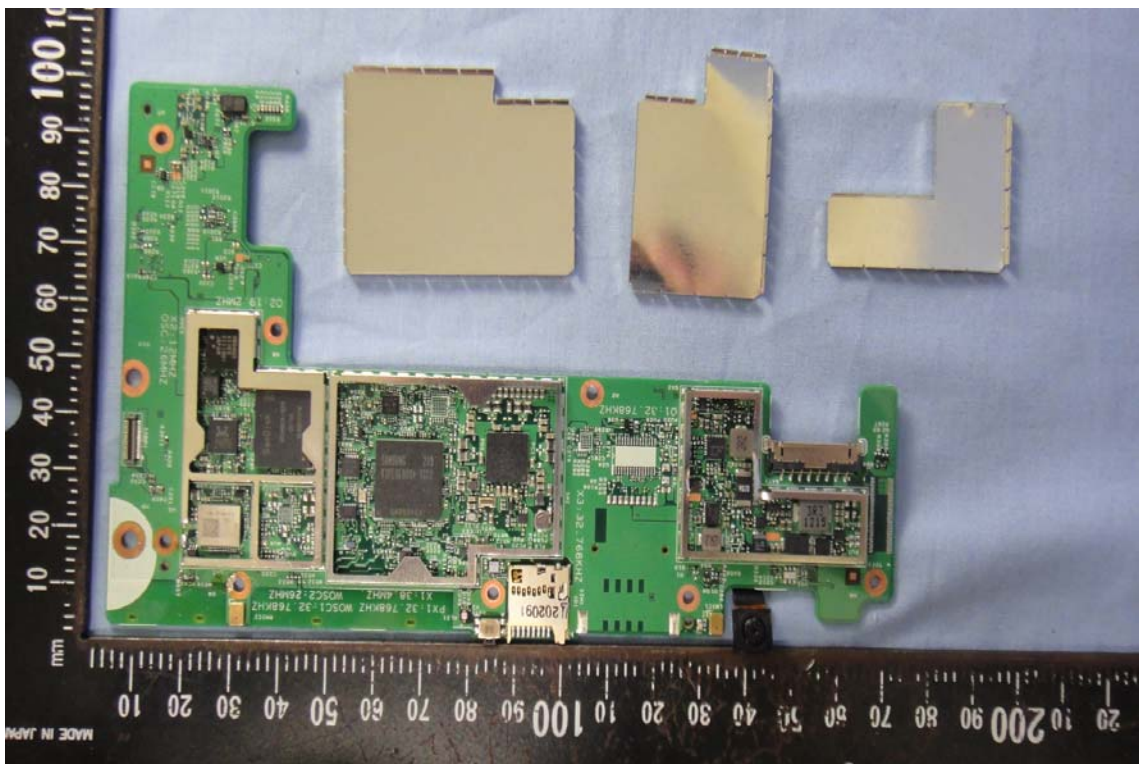
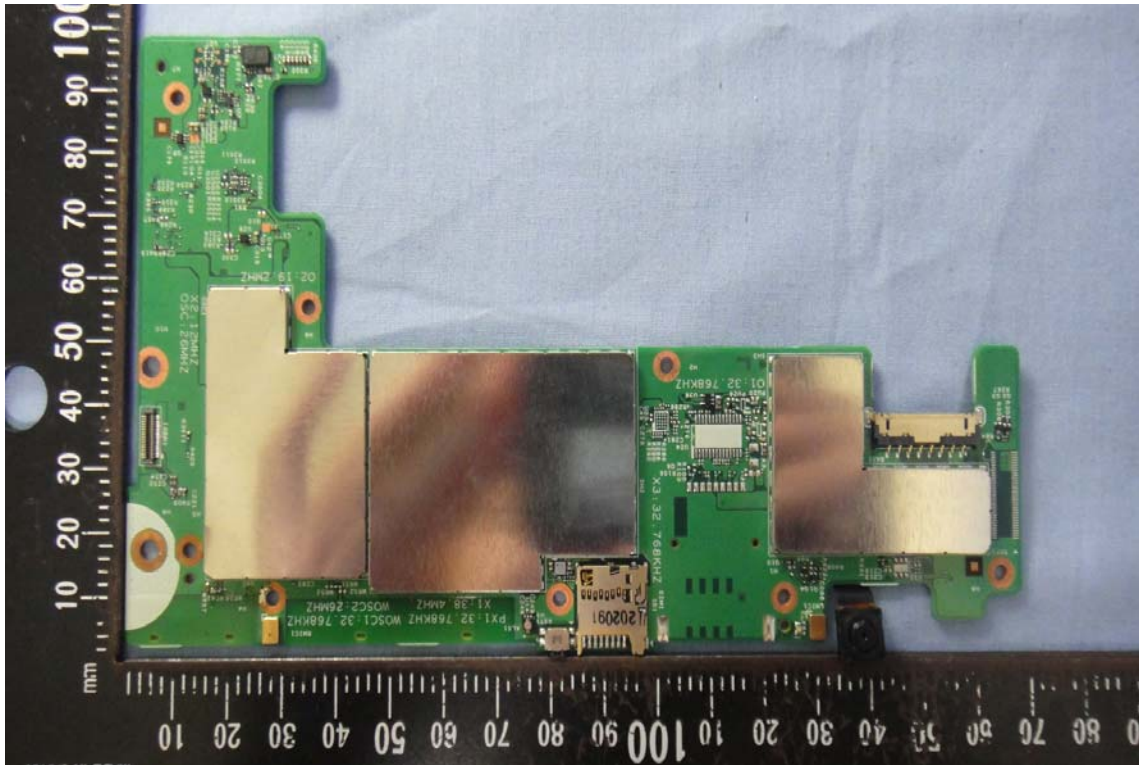


## INTERNAL PHOTOGRAPHS OF EUT

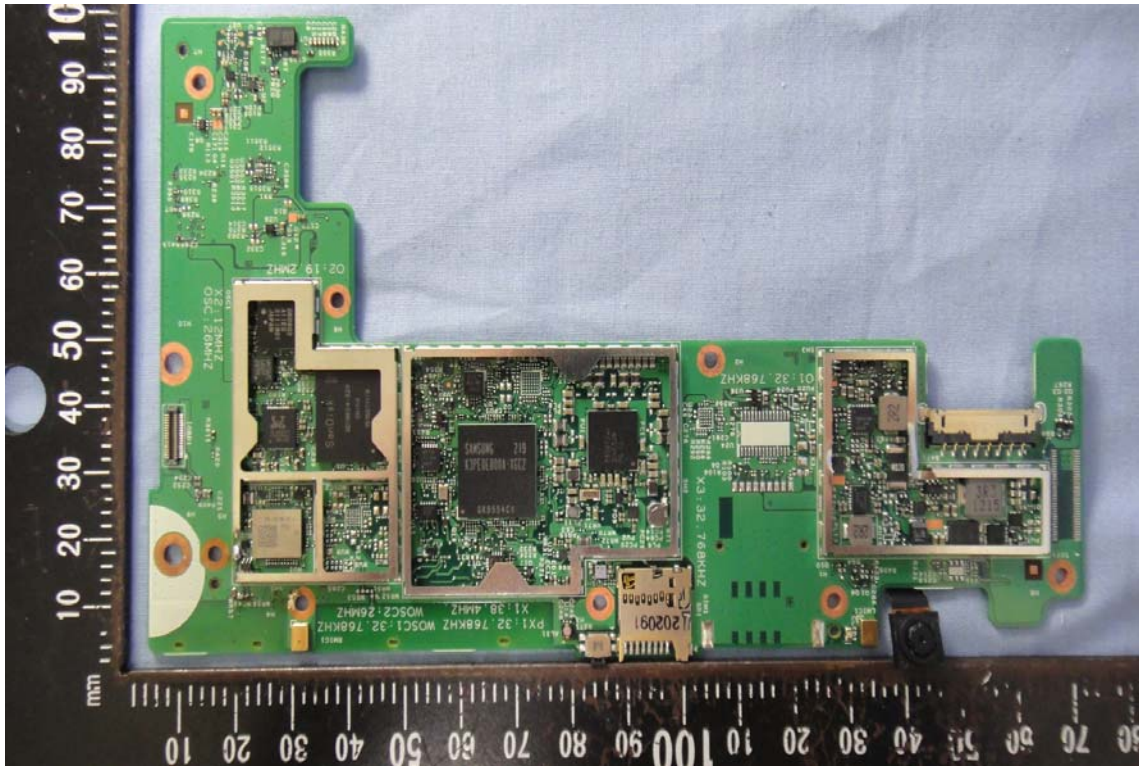




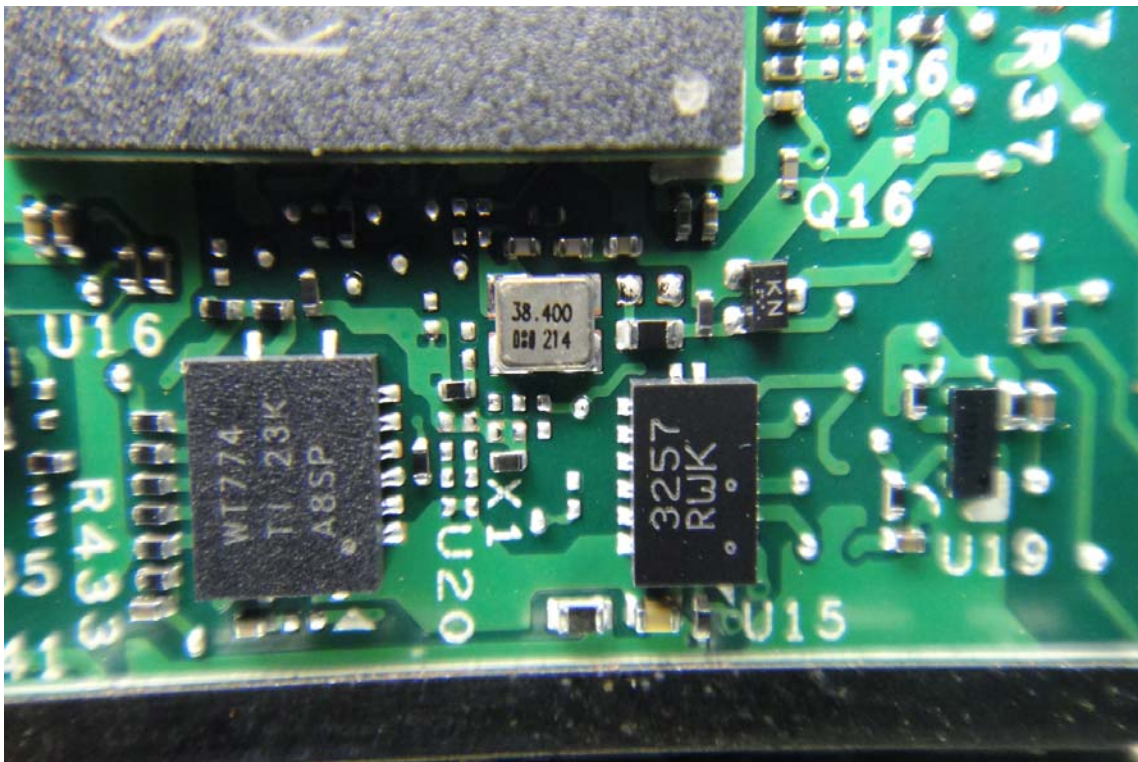
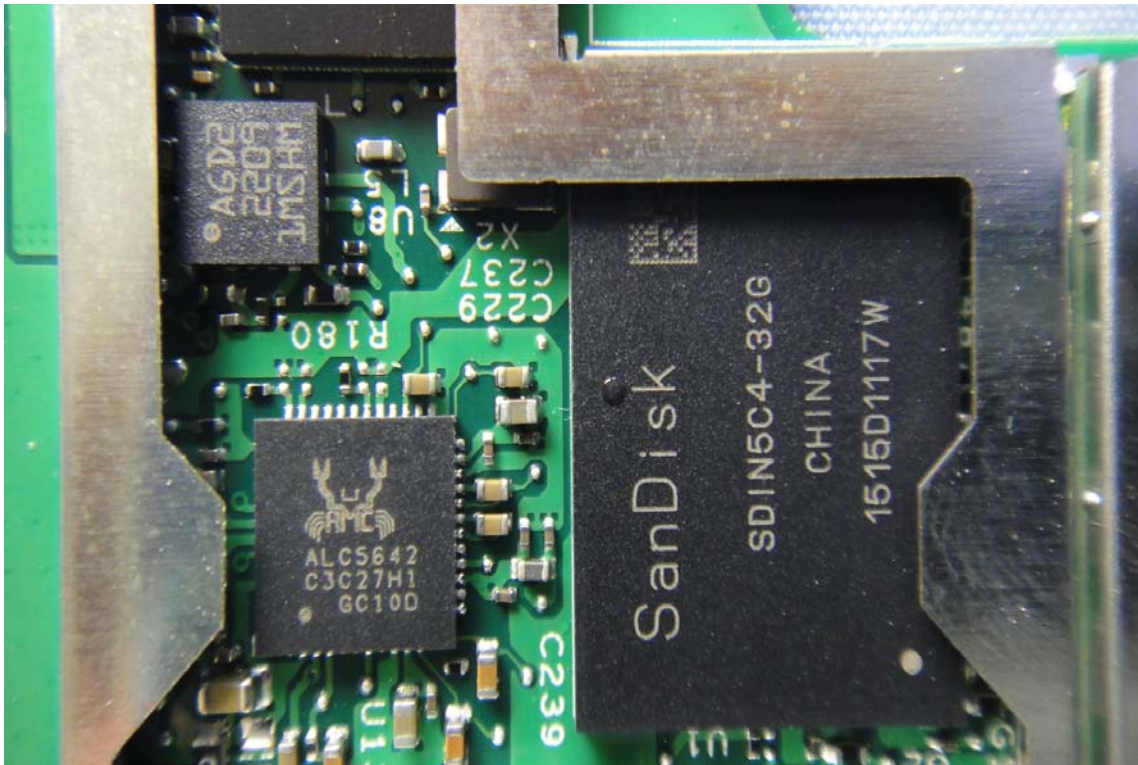




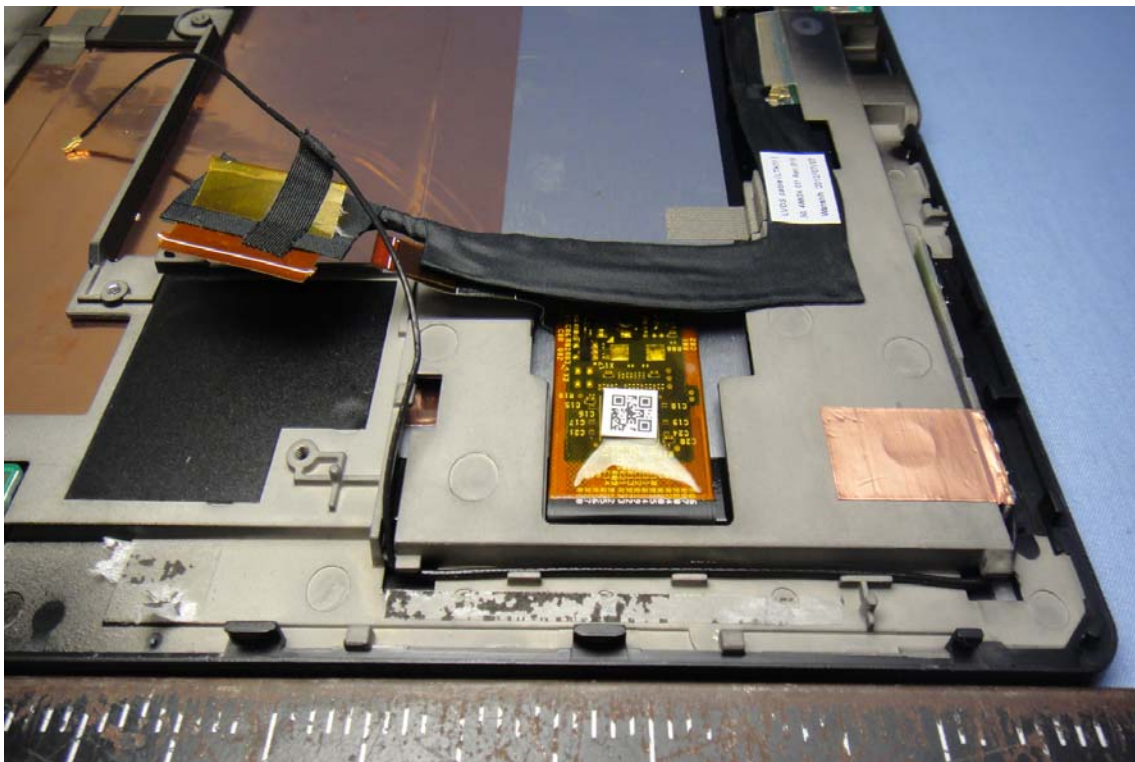
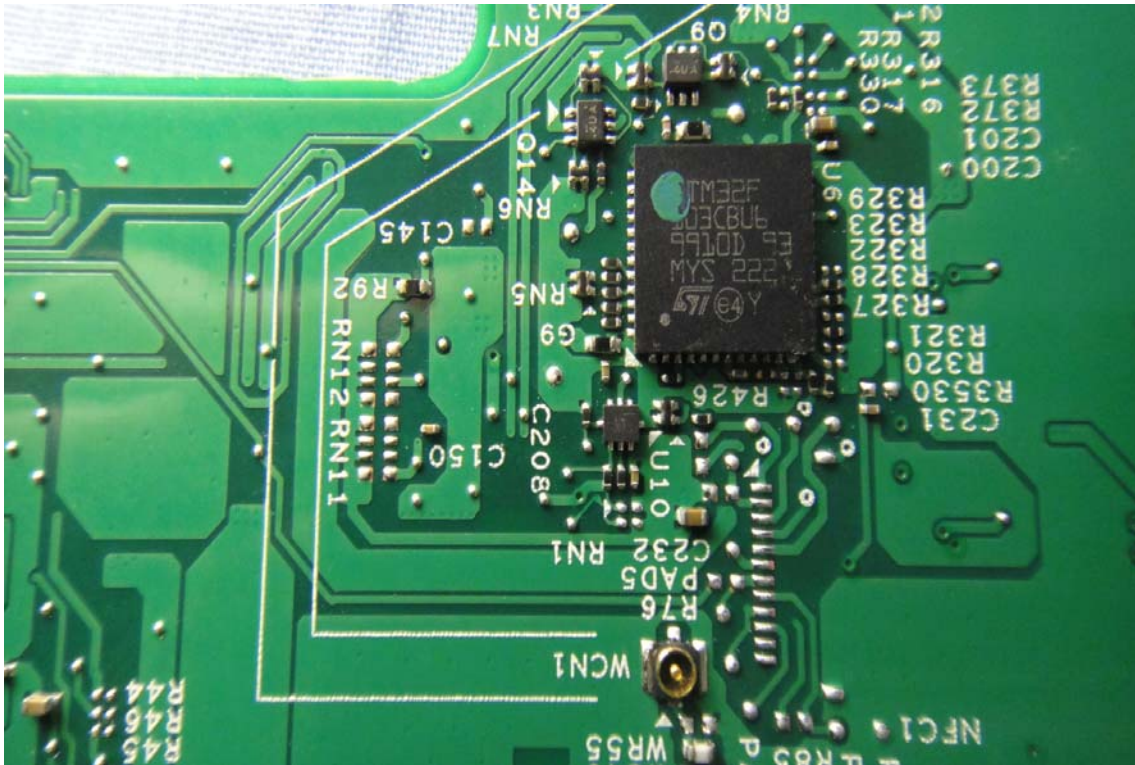




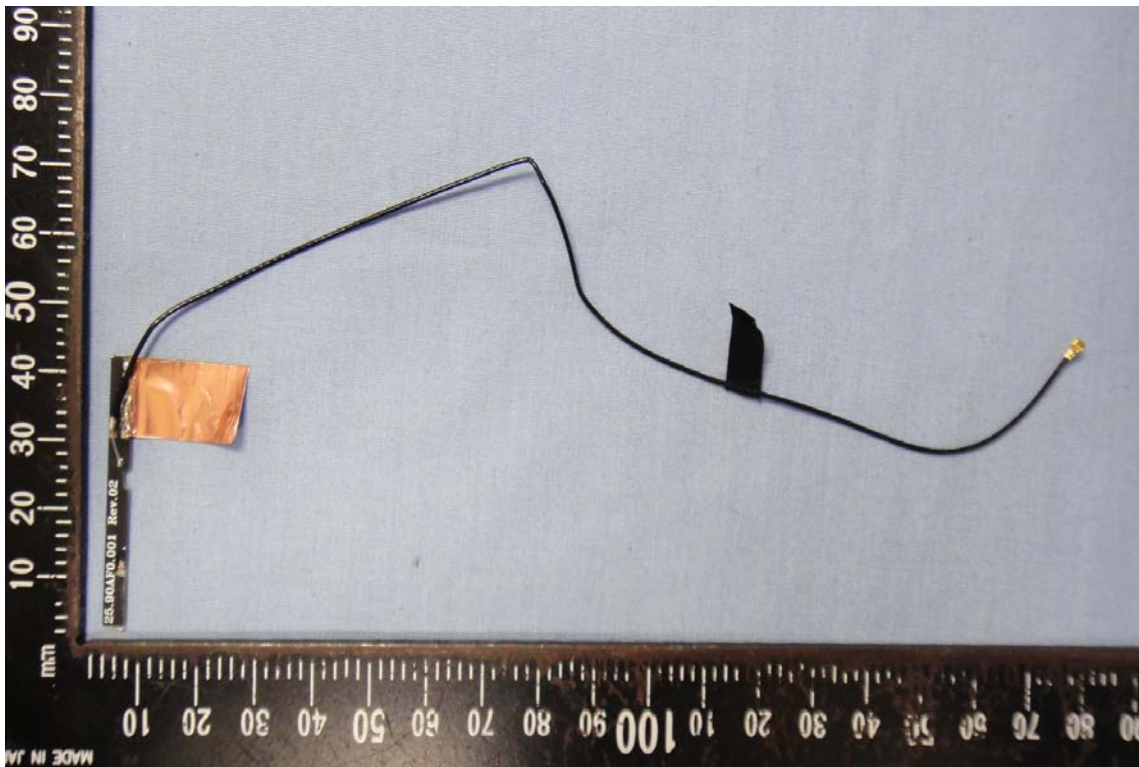




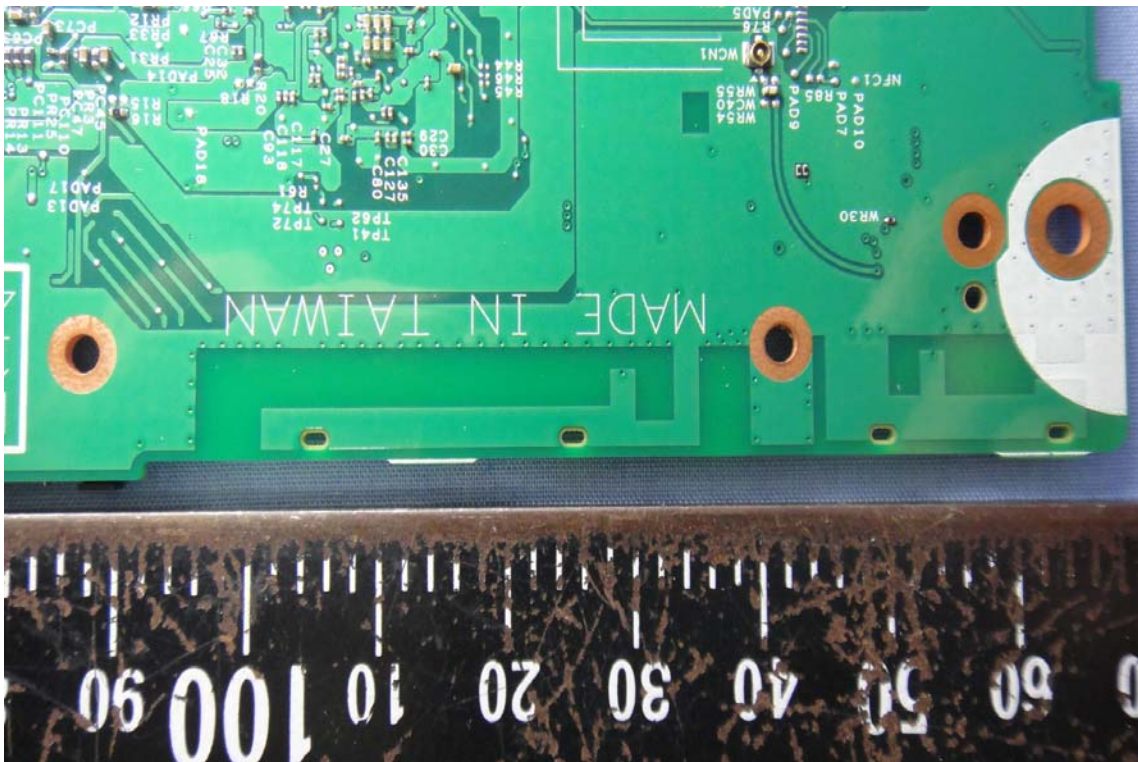




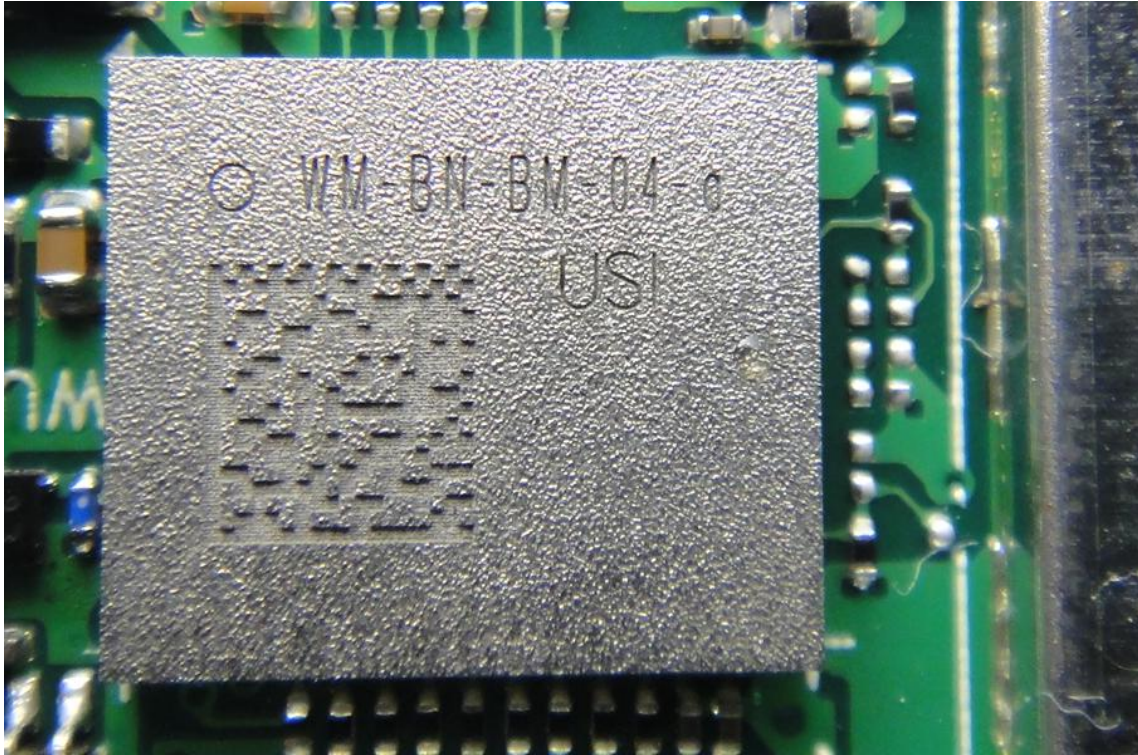




















**lenovo**®  
® Registered Trademark of Lenovo

Rechargeable Li-Polymer Battery    执行标准: GB/T18287-2000  
可再充电式锂聚合物电池组  
11CP3/95/97-2    PLEASE REFER TO USER MANUAL OR FOLLOW LOCAL   
ORDINANCES AND/OR REGULATIONS FOR DISPOSAL  
Model Name(型号/型号):    请参考使用说明或者遵循相关法律规定处理废弃电池  
L12M2P31    NOM 3.7V  $\equiv$  25Wh, 6800mAh  
    电流/电压: 3.7V  $\equiv$  25Wh, 6800mAh  
Manufactured for Lenovo    限制电压: 4.2V  
Cell made in China  
Pack processed in China  
制造地: 中国    STORE BETWEEN 0°C~60°C 32°F~140°F  
For use with Lenovo personal computer

... DANGER DO NOT OPEN CRUSH OR