




Meet Flo.
Get Acquainted.

Why Flo?

Millions of homeowners are affected by water damage every year, often resulting in **catastrophic financial, health and emotional costs.**

With our home plumbing systems becoming more outdated and our most precious natural resource dwindling, **controlling and monitoring our water has become critical.**

Our planet's water supply is shrinking, drought conditions worsening and water becoming more expensive.



In our homes, **13% of our water is lost due to leaks***. That's trillions of gallons of water every year. That's **a lot of wasted water**, and it's causing billions of dollars of damage to our homes.

What if homeowners had complete transparency to their home water usage and the ability to **detect even the slowest and smallest of leaks** before they result in flooding, lost valuables, mold, relocation and costly repairs?

Meet Flo.

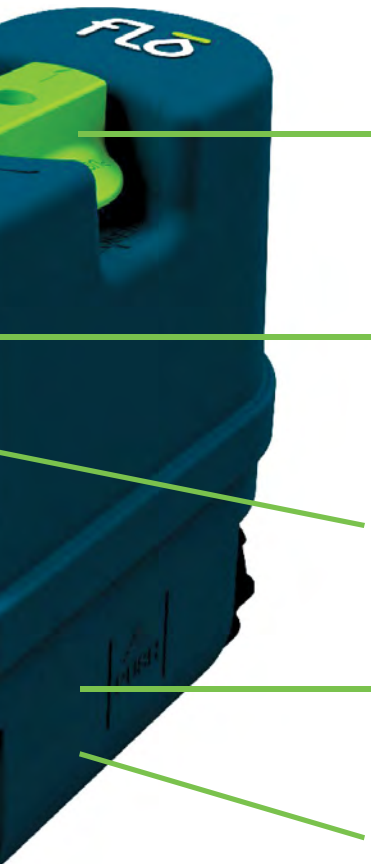
** Residential End Uses of Water, Version 2:
Executive Report, Water Research Foundation, 2016.*

Flo Device: The Heart of the System

This water monitoring and control device learns water habits and customizes actions. A single tap from your Flo Mobile App will open or close the valve that controls water entering your home.

If Flo senses that your home is in immediate danger, the system can automatically turn the water off for you.





BACKUP SHUTOFF

If app connectivity is lost, open or close the manual shutoff by using the supplied hex key to press down and turn the knob.

SYSTEM STATUS



Verify that your system is connected to your home wireless network

VALVE STATUS



Confirm whether your valve is open (green) or closed (red), or in transition (white)

POWER INPUT

Power your Flo Device by simply plugging it into the nearest outlet

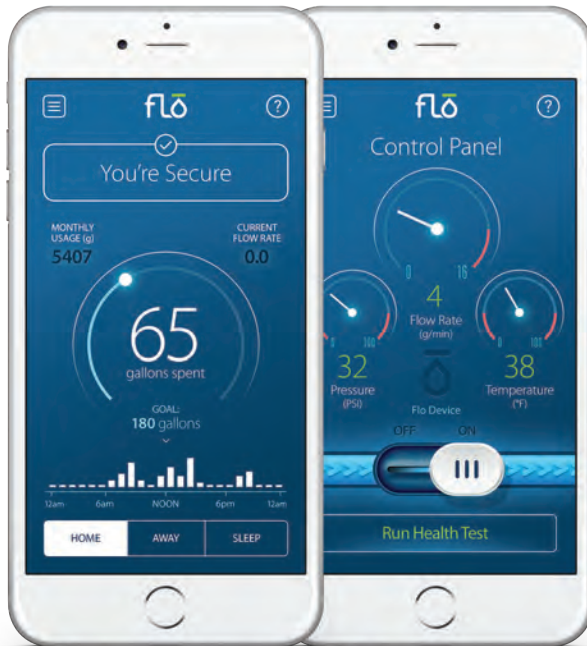
WATER-RESISTANT HOUSING

Feel confident that your device is safe from elements and pests with a sealed protective shell

SENSORS

Monitor your water's pressure, temperature, and flow

Flo Mobile App: Never Miss a Drip



DASHBOARD

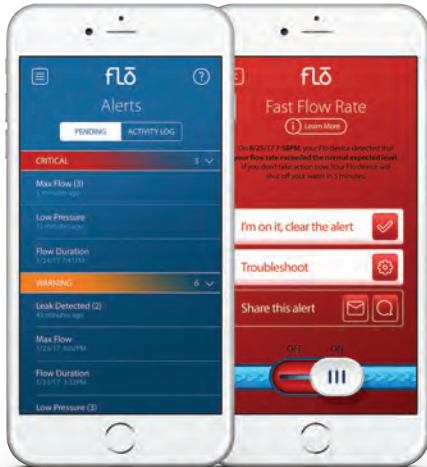
Monitor your daily and monthly water consumption, see your flow rate, and update your home/away settings.

Detected leak or abnormal usage? Your dashboard will alert you by turning yellow or red.

CONTROL PANEL

See pressure, temperature, and flow rate in real time.

Run diagnostic health checks, and turn your water off or on as needed.



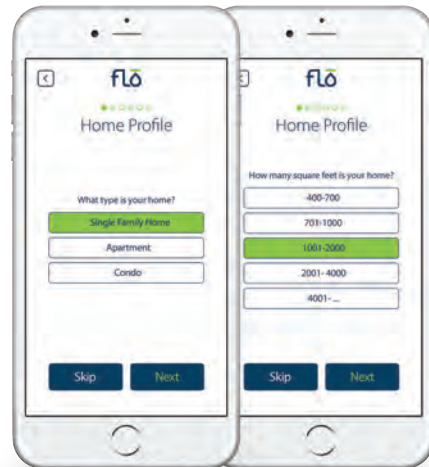
ALERTS

When a leak or abnormal usage is detected, your Flo Mobile App notifies you. Alerts let you take action immediately or ignore the alarm and test again later.

You can even notify your plumber or other contacts from the Flo Mobile App.

HOME PROFILE

Help Flo best assess your typical water consumption and identify any irregularities by updating your home details.



Ready, Set, Flo: Getting Started

Flo Components:
Essentials and Extras



Get familiar with your Flo System . . .

Identify the following primary components:

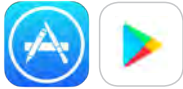
- **FLO DEVICE:** the heart of your Flo System, installed by a licensed plumber on your main water line.
- **QR CODE:** unique code assigned to your Flo Device and essential for setup. Please keep your QR code in a safe place should you need it later.
- **POWER CORD:** used to connect your Flo Device to the nearest power outlet.

Identify the following included accessories, in the event you need them:

- **CONNECTION FITTINGS:** 2 threaded, brass tail pieces used by a licensed plumber to install your Flo device.
- **O-RINGS:** spare parts used to secure a sealed connection to the home piping.
- **FLO SPACER:** used in place of the Flo Device during installation or removal.
- **HEX KEY:** used to properly turn the manual shutoff knob.

Setup the Flo Mobile App

1



Search for 'Flo Technologies' in the App Store or Google Play Store

2



Install the Flo Mobile App

4



Answer on-boarding questions

3



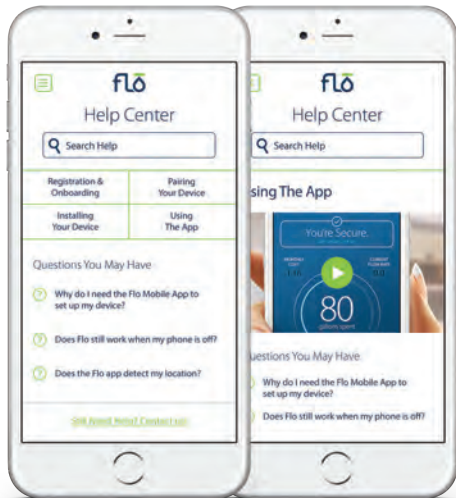
Setup your user account

5



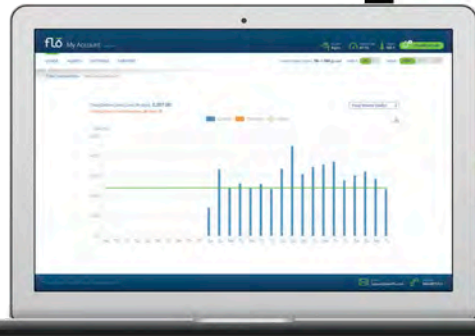
Pair Flo Device to home network





Visit the **Help Center** for video tutorials and troubleshooting.

Login to **user.meetflo.com** to view detailed usage graphs and make changes to your account preferences.



Questions?

support@meetflo.com

844.MEETFLO



149.02W03.0011



Install Guide

Hello installer. Meet Flo.

This is where Flo belongs on the main water supply line:



Water
Meter



Pressure
Regulator



Water
Shutoff



Flo Device



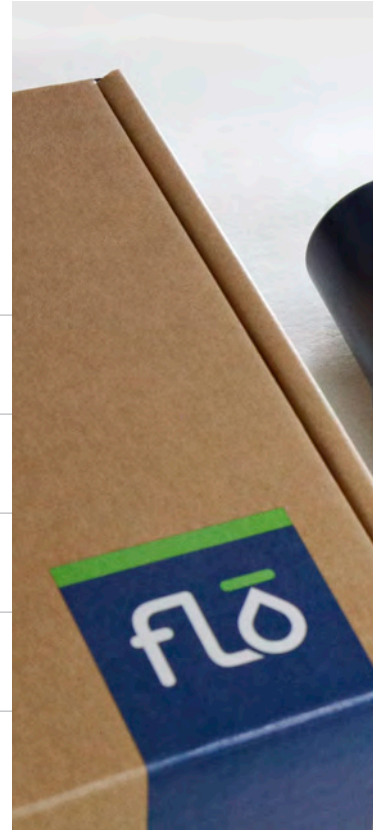
Wireless Router



This Install Guide outlines the Flo Recommended Installation. It provides the necessary information on how to install a Flo Device and make it a smooth process for both you and the homeowner. **Let's get started!**

Contents: What's in the Box

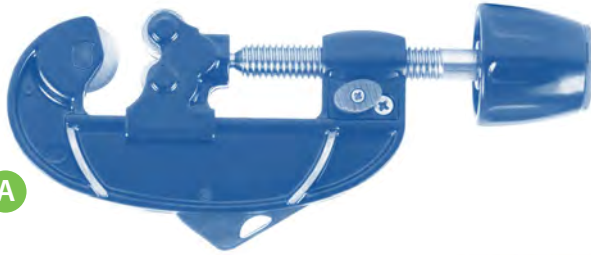
- 1 Flo Device
- 2 Threaded Connection Fittings
- 3 Power Adapter
- 4 Spare O-Rings
- 5 Flo Spacer
- 6 Manual Shutoff Hex Key







A



B



D



E



C





What you'll need

A Pipe Cutter

B Measuring Tape

C Teflon Tape

D Drill
(Necessary when routing power through an exterior wall)

E Solder, Flux and Torch
(Necessary when using 'Sweat' fittings)

F Additional Copper Pipe and Fittings

F



Installation



STEP 1

Locate and turn off the main water supply valve



STEP 2

With the homeowner's permission, relieve water pressure by opening as many fixtures possible



STEP 3

Install the Flo Device on the main water line after the manual shut off and after the PRV

- A. Do not solder fittings with Flo Device installed
- B. Use the Flo Spacer if necessary
- C. Position the Flo Device with the arrow pointing towards the flow of water into the home

After Installation



STEP 4

Slowly turn on the main water supply and look for any possible leaks around the point of installation



STEP 5

Turn off the fixtures opened from Step 2 and check for any possible leaks in the installation



STEP 6

Connect the power adapter

If there is no outlet nearby you may have to drill through the home's exterior wall to for access to an indoor outlet. (*Homeowner's approval is required.*) Verify that there are no pipes or obstructions behind the wall before drilling.



STEP 7

Verify LED status

- A. Valve LED is *solid green* when valve is open; *solid red* when closed
- B. Status LED is *green* when connected to the home's WLAN; Status LED is *blinking green* when connected to the home's WLAN but there is no internet connection; Status LED is *solid white* when there is no connection to the home's WLAN or internet connection

Run a Health Test with the Homeowner



1. Open the Flo Mobile App and navigate to the Control Panel.

2. Turn off all the fixtures and tap 'Run Health Test'. Note that the Health Test can take up to 8 minutes.



Questions?

meetflo.com/support
support@meetflo.com

844-MEETFLO



149.02W01.0011

Visit meetflo.com/install for installation tips and details

Federal Communications Commission (FCC) Statement

This equipment has been tested and found to comply with the limits for a Class B digital device, pursuant to part 15 of the FCC rules. These limits are designed to provide reasonable protection against harmful interference in a residential installation. This equipment generates, uses and can radiate radio frequency energy and, if not installed and used in accordance with the instructions, may cause harmful interference to radio communications. However, there is no guarantee that interference will not occur in a particular installation. If this equipment does cause harmful interference to radio or television reception, which can be determined by turning the equipment off and on, the user is encouraged to try to correct the interference by one or more of the following measures:

- Reorient or relocate the receiving antenna.
- Increase the separation between the equipment and receiver.
- Connect the equipment into an outlet on a circuit different from that to which the receiver is connected.
- Consult the dealer or an experienced radio/TV technician for help.

This device complies with Part 15 of the FCC Rules. Operation is subject to the following two conditions:

- 1) this device may not cause harmful interference, and
- 2) this device must accept any interference received, including interference that may cause undesired operation of the device.

FCC RF Radiation Exposure Statement:

1. This Transmitter must not be co-located or operating in conjunction with any other antenna or transmitter.
2. This equipment complies with FCC RF radiation exposure limits set forth for an uncontrolled environment. This equipment should be installed and operated with a minimum distance of 20 centimeters between the radiator and your body.

FCC 15.21:

The changes or modifications not expressly approved by the party responsible for compliance could void the user's authority to operate the equipment.