

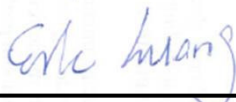
FCC SAR Test Report

APPLICANT : Wistron Corporation
EQUIPMENT : Tablet PC
BRAND NAME : Lenovo
MODEL NAME : TP00082A
FCC ID : PU5-TP00082AI
STANDARD : FCC 47 CFR Part 2 (2.1093)
ANSI/IEEE C95.1-1992
IEEE 1528-2013

Equipment: Intel 8265D2W tested inside of Lenovo Tablet PC

We, SPORTON INTERNATIONAL INC., would like to declare that the tested sample has been evaluated in accordance with the procedures and had been in compliance with the applicable technical standards.

The test results in this report apply exclusively to the tested model / sample. Without written approval of SPORTON INTERNATIONAL INC., the test report shall not be reproduced except in full.



Reviewed by: Eric Huang / Deputy Manager



Approved by: Jones Tsai / Manager



SPORTON INTERNATIONAL INC.

No.52, Hwa Ya 1st Rd., Hwa Ya Technology Park, Kwei-Shan District, Taoyuan City, Taiwan (R.O.C.)



Table of Contents

1. Statement of Compliance 4
2. Administration Data 5
3. Guidance Applied..... 5
3.1 Re-use of Measured Data 6
4. Equipment Under Test (EUT) Information 7
4.1 General Information 7
5. RF Exposure Limits..... 8
5.1 Uncontrolled Environment..... 8
5.2 Controlled Environment..... 8
6. Specific Absorption Rate (SAR)..... 9
6.1 Introduction 9
6.2 SAR Definition..... 9
7. System Description and Setup10
7.1 E-Field Probe 11
7.2 Data Acquisition Electronics (DAE) 11
7.3 Phantom..... 12
7.4 Device Holder..... 13
8. Measurement Procedures14
8.1 Spatial Peak SAR Evaluation 14
8.2 Power Reference Measurement..... 15
8.3 Area Scan 15
8.4 Zoom Scan..... 16
8.5 Volume Scan Procedures..... 16
8.6 Power Drift Monitoring..... 16
9. Test Equipment List17
10. System Verification18
10.1 Tissue Simulating Liquids..... 18
10.2 Tissue Verification 19
10.3 System Performance Check Results..... 20
11. RF Exposure Positions20
11.1 SAR Testing for Tablet 20
12. Conducted RF Output Power (Unit: dBm).....21
13. SAR Test Results31
13.1 Spot check of Body SAR 31
14. Simultaneous Transmission Analysis32
14.1 Body Exposure Conditions 32
14.2 SPLSR Evaluation and Analysis..... 33
15. Uncertainty Assessment34
16. References37
Appendix A. Plots of System Performance Check
Appendix B. Plots of High SAR Measurement
Appendix C. DASy Calibration Certificate
Appendix D. Reference Report
Appendix E. Test Setup Photos



Revision History

REPORT NO.	VERSION	DESCRIPTION	ISSUED DATE
FA5N2711-09	Rev. 01	Initial issue of report	Nov. 18, 2016
FA5N2711-09	Rev. 02	Update Appendix D	Dec. 7, 2016



1. Statement of Compliance

The maximum results of Specific Absorption Rate (SAR) found during testing for Wistron Corporation, Tablet PC, TP00082A, are as follows.

Equipment Class	Frequency Band	Highest SAR Summary	
		Body (Separation 0mm)	Highest Simultaneous Transmission 1g SAR (W/kg)
		1g SAR (W/kg)	
DTS	2.4GHz WLAN	0.98	1.09
NII	5GHz WLAN	1.18	1.24
DSS	Bluetooth	0.10	1.24
Date of Testing:		2016/10/6 ~ 2016/10/18	

This device is in compliance with Specific Absorption Rate (SAR) for general population/uncontrolled exposure limits (1.6 W/kg) specified in FCC 47 CFR part 2 (2.1093) and ANSI/IEEE C95.1-1992, and had been tested in accordance with the measurement methods and procedures specified in IEEE 1528-2013 and FCC KDB publications

2. Administration Data

Testing Laboratory	
Test Site	SPORTON INTERNATIONAL INC.
Test Site Location	No.52, Hwa Ya 1st Rd., Hwa Ya Technology Park, Kwei-Shan District, Taoyuan City, Taiwan (R.O.C.) TEL: +886-3-327-3456 FAX: +886-3-328-4978

Applicant	
Company Name	Wistron Corporation
Address	21F, No. 88, Sec. 1, Hsin Tai Wu Rd., Hsichih Dist, New Taipei City 221, Taiwan R.O.C.

Manufacturer	
Company Name	Wistron Corporation
Address	21F, No. 88, Sec. 1, Hsin Tai Wu Rd., Hsichih Dist, New Taipei City 221, Taiwan R.O.C.

3. Guidance Applied

The Specific Absorption Rate (SAR) testing specification, method, and procedure for this device is in accordance with the following standards:

- FCC 47 CFR Part 2 (2.1093)
- ANSI/IEEE C95.1-1992
- IEEE 1528-2013
- FCC KDB 865664 D01 SAR Measurement 100 MHz to 6 GHz v01r04
- FCC KDB 865664 D02 SAR Reporting v01r02
- FCC KDB 447498 D01 General RF Exposure Guidance v06
- FCC KDB 248227 D01 802.11 Wi-Fi SAR v02r02
- FCC KDB 616217 D04 SAR for laptop and tablets v01r02



3.1 Re-use of Measured Data

1. Introduction Section

This report referenced from the FCC ID: PU5-TP00082ASI (DTS / NII / DSS)

The applicant takes full responsibility that the test data as referenced in this section represent compliance for this FCC ID.

2. Difference Section

Both original devices and modified devices that only difference is removed WWAN module, SAR data from the original filling was used for this model. Sopt checks for WLAN and Bluetooth were performed to ensure that the SAR measurement for both device are the same.

The WLAN and Bluetooth SAR measurement results from the original report (Sporton SAR Report No. FA5N2711-08, FCC ID: PU5-TP00082ASI) as Appendix D. In this report, highest SAR summary and Sim-Tx analysis evaluation is select higher value of either original SAR result or spot checks SAR result.

3. Spot Check Verification Data Section

Band	Mode	Test Position	Gap (mm)	Antenna	Ch.	Freq. (MHz)	Original Model (FCC ID :PU5- TP00082ASI)				Spot Check Mode (FCC ID : PU5- TP00082AI)				Deviation
							Average Power (dBm)	Tune-Up Limit (dBm)	Measured 1g SAR (W/kg)	Reported 1g SAR (W/kg)	Average Power (dBm)	Tune-Up Limit (dBm)	Measured 1g SAR (W/kg)	Reported 1g SAR (W/kg)	
Bluetooth	1Mbps	Bottom Face	0mm	Ant 2	39	2441	9.84	11.80	0.053	0.091	9.84	11.80	0.061	0.104	13.8%
WLAN2.4GHz	802.11b 1Mbps	Bottom Face	0mm	Ant 1	6	2437	14.93	15.00	0.953	0.982	14.93	15.00	0.775	0.799	-18.7%
WLAN2.4GHz	802.11b 1Mbps	Bottom Face	0mm	Ant 2	11	2462	14.92	15.00	0.554	0.572	14.92	15.00	0.602	0.622	8.7%
WLAN 5.2GHz	802.11ac-VHT80 MCS0	Bottom Face	0mm	Ant 1	58	5290	13.29	13.50	0.875	0.974	13.29	13.50	1.054	1.137	16.8%
WLAN 5.2GHz	802.11n-HT40 MCS0	Edge 1	0mm	Ant 2	54	5270	13.27	13.50	0.840	0.914	13.27	13.50	0.726	0.790	-13.6%
WLAN 5.5GHz	802.11ac-VHT80 MCS0	Bottom Face	0mm	Ant 1	138	5690	13.30	13.50	0.701	0.779	13.30	13.50	0.816	0.907	16.4%
WLAN 5.5GHz	802.11ac-VHT80 MCS0	Bottom Face	0mm	Ant 2	138	5690	13.28	13.50	1.050	1.182	13.28	13.50	0.951	1.070	-9.4%
WLAN 5.8GHz	802.11n-HT40 MCS0	Bottom Face	0mm	Ant 1	159	5795	13.33	13.50	1.010	1.085	13.33	13.50	0.852	0.915	-15.7%
WLAN 5.8GHz	802.11n-HT40 MCS0	Bottom Face	0mm	Ant 2	151	5755	13.27	13.50	0.837	0.912	13.27	13.50	0.925	1.007	10.4%

Note: In the table above, all the deviation of SAR test results are compliant with uncertainty budget.

4. Reference detail Section:

Equipment Class	Reference FCC ID	Folder Test/RF Exposure	Report Title/Section
DTS	PU5-TP00082ASI	RF Exposure (FA5N2711-08)	Sections related to DTS test data
NII	PU5-TP00082ASI	RF Exposure (FA5N2711-08)	Sections related to NII test data
DSS	PU5-TP00082ASI	RF Exposure (FA5N2711-08)	Sections related to DSS test data



4. Equipment Under Test (EUT) Information

4.1 General Information

Product Feature & Specification	
Equipment Name	Tablet PC
Brand Name	Lenovo
Model Name	TP00082A
FCC ID	PU5-TP00082AI
Integrated WLAN Module	Brand Name: Intel Model Name: 8265D2W
S/N	1S4810AQ010010000027
Wireless Technology and Frequency Range	WLAN 2.4GHz Band: 2412 MHz ~ 2472 MHz WLAN 5.2GHz Band: 5180 MHz ~ 5240 MHz WLAN 5.3GHz Band: 5260 MHz ~ 5320 MHz WLAN 5.5GHz Band: 5500 MHz ~ 5720 MHz WLAN 5.8GHz Band: 5745 MHz ~ 5825 MHz Bluetooth: 2402 MHz ~ 2480 MHz
Mode	· 802.11a/b/g/n/ac HT20/HT40/VHT20/VHT40/VHT80 · Bluetooth BR/EDR/LE/HS
EUT Stage	Production Unit

WLAN Antenna Information		
Manufacturer	PULSE	
Antenna Type	Main: dipole Antenna	Aux: dipole Antenna
Part number	025.900FC.0001	025.900FD.0001
Peak gain(dBi)	Main Antenna :	Aux Antenna :
	WLAN(2.4G):-0.82	WLAN(2.4G):1.39 BT :1.39
	WLAN(5G):2.31	WLAN(5G):3.13



5. RF Exposure Limits

5.1 Uncontrolled Environment

Uncontrolled Environments are defined as locations where there is the exposure of individuals who have no knowledge or control of their exposure. The general population/uncontrolled exposure limits are applicable to situations in which the general public may be exposed or in which persons who are exposed as a consequence of their employment may not be made fully aware of the potential for exposure or cannot exercise control over their exposure. Members of the general public would come under this category when exposure is not employment-related; for example, in the case of a wireless transmitter that exposes persons in its vicinity.

5.2 Controlled Environment

Controlled Environments are defined as locations where there is exposure that may be incurred by persons who are aware of the potential for exposure, (i.e. as a result of employment or occupation). In general, occupational/controlled exposure limits are applicable to situations in which persons are exposed as a consequence of their employment, who have been made fully aware of the potential for exposure and can exercise control over their exposure. The exposure category is also applicable when the exposure is of a transient nature due to incidental passage through a location where the exposure levels may be higher than the general population/uncontrolled limits, but the exposed person is fully aware of the potential for exposure and can exercise control over his or her exposure by leaving the area or by some other appropriate means.

Limits for Occupational/Controlled Exposure (W/kg)

Whole-Body	Partial-Body	Hands, Wrists, Feet and Ankles
0.4	8.0	20.0

Limits for General Population/Uncontrolled Exposure (W/kg)

Whole-Body	Partial-Body	Hands, Wrists, Feet and Ankles
0.08	1.6	4.0

1. Whole-Body SAR is averaged over the entire body, partial-body SAR is averaged over any 1gram of tissue defined as a tissue volume in the shape of a cube. SAR for hands, wrists, feet and ankles is averaged over any 10 grams of tissue defined as a tissue volume in the shape of a cube.

6. Specific Absorption Rate (SAR)

6.1 Introduction

SAR is related to the rate at which energy is absorbed per unit mass in an object exposed to a radio field. The SAR distribution in a biological body is complicated and is usually carried out by experimental techniques or numerical modeling. The standard recommends limits for two tiers of groups, occupational/controlled and general population/uncontrolled, based on a person's awareness and ability to exercise control over his or her exposure. In general, occupational/controlled exposure limits are higher than the limits for general population/uncontrolled.

6.2 SAR Definition

The SAR definition is the time derivative (rate) of the incremental energy (dW) absorbed by (dissipated in) an incremental mass (dm) contained in a volume element (dv) of a given density (ρ). The equation description is as below:

$$SAR = \frac{d}{dt} \left(\frac{dW}{dm} \right) = \frac{d}{dt} \left(\frac{dW}{\rho dv} \right)$$

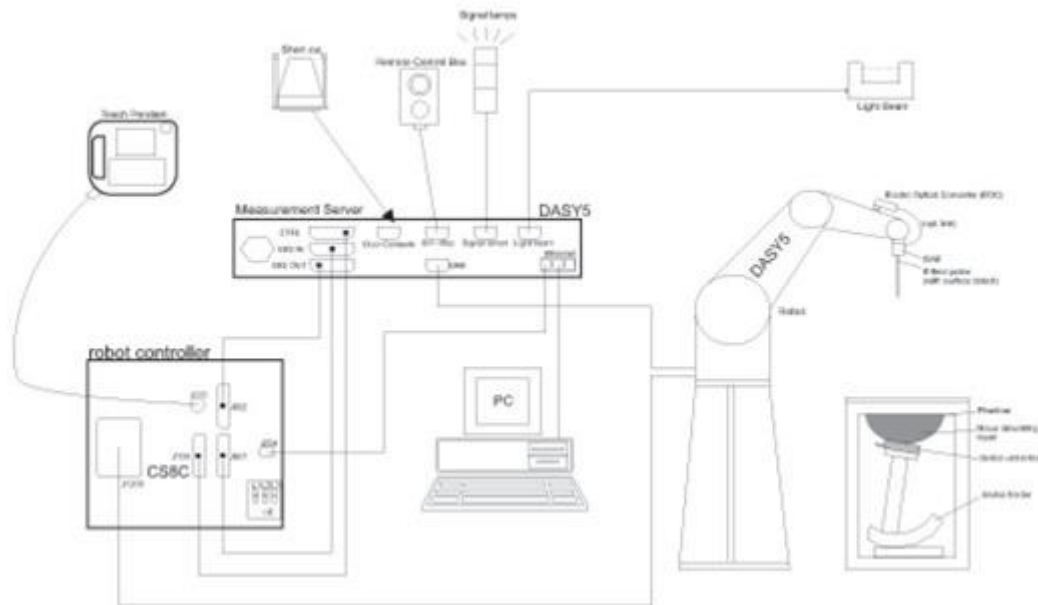
SAR is expressed in units of Watts per kilogram (W/kg)

$$SAR = \frac{\sigma |E|^2}{\rho}$$

Where: σ is the conductivity of the tissue, ρ is the mass density of the tissue and E is the RMS electrical field strength.

7. System Description and Setup

The DASY system used for performing compliance tests consists of the following items:




- A standard high precision 6-axis robot with controller, teach pendant and software. An arm extension for accommodating the data acquisition electronics (DAE).
- An isotropic Field probe optimized and calibrated for the targeted measurement.
- A data acquisition electronics (DAE) which performs the signal amplification, signal multiplexing, AD-conversion, offset measurements, mechanical surface detection, collision detection, etc. The unit is battery powered with standard or rechargeable batteries. The signal is optically transmitted to the EOC.
- The Electro-optical converter (EOC) performs the conversion from optical to electrical signals for the digital communication to the DAE. To use optical surface detection, a special version of the EOC is required. The EOC signal is transmitted to the measurement server.
- The function of the measurement server is to perform the time critical tasks such as signal filtering, control of the robot operation and fast movement interrupts.
- The Light Beam used is for probe alignment. This improves the (absolute) accuracy of the probe positioning.
- A computer running WinXP or Win7 and the DASY5 software.
- Remote control and teach pendant as well as additional circuitry for robot safety such as warning lamps, etc.
- The phantom, the device holder and other accessories according to the targeted measurement.


7.1 E-Field Probe

The SAR measurement is conducted with the dosimetric probe (manufactured by SPEAG). The probe is specially designed and calibrated for use in liquid with high permittivity. The dosimetric probe has special calibration in liquid at different frequency. This probe has a built in optical surface detection system to prevent from collision with phantom.

<ES3DV3 Probe>

Construction	Symmetric design with triangular core Interleaved sensors Built-in shielding against static charges PEEK enclosure material (resistant to organic solvents, e.g., DGBE)	
Frequency	10 MHz – 4 GHz; Linearity: ± 0.2 dB (30 MHz – 4 GHz)	
Directivity	± 0.2 dB in TSL (rotation around probe axis) ± 0.3 dB in TSL (rotation normal to probe axis)	
Dynamic Range	5 μ W/g – >100 mW/g; Linearity: ± 0.2 dB	
Dimensions	Overall length: 337 mm (tip: 20 mm) Tip diameter: 3.9 mm (body: 12 mm) Distance from probe tip to dipole centers: 3.0 mm	

<EX3DV4 Probe>

Construction	Symmetric design with triangular core Built-in shielding against static charges PEEK enclosure material (resistant to organic solvents, e.g., DGBE)	
Frequency	10 MHz – >6 GHz Linearity: ± 0.2 dB (30 MHz – 6 GHz)	
Directivity	± 0.3 dB in TSL (rotation around probe axis) ± 0.5 dB in TSL (rotation normal to probe axis)	
Dynamic Range	10 μ W/g – >100 mW/g Linearity: ± 0.2 dB (noise: typically <1 μ W/g)	
Dimensions	Overall length: 337 mm (tip: 20 mm) Tip diameter: 2.5 mm (body: 12 mm) Typical distance from probe tip to dipole centers: 1 mm	

7.2 Data Acquisition Electronics (DAE)

The data acquisition electronics (DAE) consists of a highly sensitive electrometer-grade preamplifier with auto-zeroing, a channel and gain-switching multiplexer, a fast 16 bit AD-converter and a command decoder and control logic unit. Transmission to the measurement server is accomplished through an optical downlink for data and status information as well as an optical uplink for commands and the clock.


The input impedance of the DAE is 200 MOhm; the inputs are symmetrical and floating. Common mode rejection is above 80 dB.



Fig 5.1 Photo of DAE


7.3 Phantom

<SAM Twin Phantom>

Shell Thickness	2 ± 0.2 mm; Center ear point: 6 ± 0.2 mm	
Filling Volume	Approx. 25 liters	
Dimensions	Length: 1000 mm; Width: 500 mm; Height: adjustable feet	
Measurement Areas	Left Hand, Right Hand, Flat Phantom	

The bottom plate contains three pair of bolts for locking the device holder. The device holder positions are adjusted to the standard measurement positions in the three sections. A white cover is provided to tap the phantom during off-periods to prevent water evaporation and changes in the liquid parameters. On the phantom top, three reference markers are provided to identify the phantom position with respect to the robot.

<ELI Phantom>

Shell Thickness	2 ± 0.2 mm (sagging: <1%)	
Filling Volume	Approx. 30 liters	
Dimensions	Major ellipse axis: 600 mm Minor axis: 400 mm	

The ELI phantom is intended for compliance testing of handheld and body-mounted wireless devices in the frequency range of 30 MHz to 6 GHz. ELI4 is fully compatible with standard and all known tissue simulating liquids.

7.4 Device Holder

<Mounting Device for Hand-Held Transmitter>

In combination with the Twin SAM V5.0/V5.0c or ELI phantoms, the Mounting Device for Hand-Held Transmitters enables rotation of the mounted transmitter device to specified spherical coordinates. At the heads, the rotation axis is at the ear opening. Transmitter devices can be easily and accurately positioned according to IEC 62209-1, IEEE 1528, FCC, or other specifications. The device holder can be locked for positioning at different phantom sections (left head, right head, flat). And upgrade kit to Mounting Device to enable easy mounting of wider devices like big smart-phones, e-books, small tablets, etc. It holds devices with width up to 140 mm.



Mounting Device for Hand-Held Transmitters



Mounting Device Adaptor for Wide-Phones

<Mounting Device for Laptops and other Body-Worn Transmitters>

The extension is lightweight and made of POM, acrylic glass and foam. It fits easily on the upper part of the mounting device in place of the phone positioned. The extension is fully compatible with the SAM Twin and ELI phantoms.



Mounting Device for Laptops



8. Measurement Procedures

The measurement procedures are as follows:

<Conducted power measurement>

- (a) For WWAN power measurement, use base station simulator to configure EUT WWAN transmission in conducted connection with RF cable, at maximum power in each supported wireless interface and frequency band.
- (b) Read the WWAN RF power level from the base station simulator.
- (c) For WLAN/BT power measurement, use engineering software to configure EUT WLAN/BT continuously transmission, at maximum RF power in each supported wireless interface and frequency band
- (d) Connect EUT RF port through RF cable to the power meter, and measure WLAN/BT output power

<SAR measurement>

- (a) Use base station simulator to configure EUT WWAN transmission in radiated connection, and engineering software to configure EUT WLAN/BT continuously transmission, at maximum RF power, in the highest power channel.
- (b) Place the EUT in the positions as Appendix D demonstrates.
- (c) Set scan area, grid size and other setting on the DASY software.
- (d) Measure SAR results for the highest power channel on each testing position.
- (e) Find out the largest SAR result on these testing positions of each band
- (f) Measure SAR results for other channels in worst SAR testing position if the reported SAR of highest power channel is larger than 0.8 W/kg

According to the test standard, the recommended procedure for assessing the peak spatial-average SAR value consists of the following steps:

- (a) Power reference measurement
- (b) Area scan
- (c) Zoom scan
- (d) Power drift measurement

8.1 Spatial Peak SAR Evaluation

The procedure for spatial peak SAR evaluation has been implemented according to the test standard. It can be conducted for 1g and 10g, as well as for user-specific masses. The DASY software includes all numerical procedures necessary to evaluate the spatial peak SAR value.

The base for the evaluation is a "cube" measurement. The measured volume must include the 1g and 10g cubes with the highest averaged SAR values. For that purpose, the center of the measured volume is aligned to the interpolated peak SAR value of a previously performed area scan.

The entire evaluation of the spatial peak values is performed within the post-processing engine (SEMCAD). The system always gives the maximum values for the 1g and 10g cubes. The algorithm to find the cube with highest averaged SAR is divided into the following stages:

- (a) Extraction of the measured data (grid and values) from the Zoom Scan
- (b) Calculation of the SAR value at every measurement point based on all stored data (A/D values and measurement parameters)
- (c) Generation of a high-resolution mesh within the measured volume
- (d) Interpolation of all measured values from the measurement grid to the high-resolution grid
- (e) Extrapolation of the entire 3-D field distribution to the phantom surface over the distance from sensor to surface
- (f) Calculation of the averaged SAR within masses of 1g and 10g

8.2 Power Reference Measurement

The Power Reference Measurement and Power Drift Measurements are for monitoring the power drift of the device under test in the batch process. The minimum distance of probe sensors to surface determines the closest measurement point to phantom surface. This distance cannot be smaller than the distance of sensor calibration points to probe tip as defined in the probe properties.

8.3 Area Scan

The area scan is used as a fast scan in two dimensions to find the area of high field values, before doing a fine measurement around the hot spot. The sophisticated interpolation routines implemented in DASY software can find the maximum found in the scanned area, within a range of the global maximum. The range (in dB0 is specified in the standards for compliance testing. For example, a 2 dB range is required in IEEE standard 1528 and IEC 62209 standards, whereby 3 dB is a requirement when compliance is assessed in accordance with the ARIB standard (Japan), if only one zoom scan follows the area scan, then only the absolute maximum will be taken as reference. For cases where multiple maximums are detected, the number of zoom scans has to be increased accordingly.

Area scan parameters extracted from FCC KDB 865664 D01v01r04 SAR measurement 100 MHz to 6 GHz.

	≤ 3 GHz	> 3 GHz
Maximum distance from closest measurement point (geometric center of probe sensors) to phantom surface	5 ± 1 mm	$\frac{1}{2} \cdot \delta \cdot \ln(2) \pm 0.5$ mm
Maximum probe angle from probe axis to phantom surface normal at the measurement location	30° ± 1°	20° ± 1°
Maximum area scan spatial resolution: $\Delta x_{Area}, \Delta y_{Area}$	≤ 2 GHz: ≤ 15 mm 2 – 3 GHz: ≤ 12 mm	3 – 4 GHz: ≤ 12 mm 4 – 6 GHz: ≤ 10 mm
	When the x or y dimension of the test device, in the measurement plane orientation, is smaller than the above, the measurement resolution must be ≤ the corresponding x or y dimension of the test device with at least one measurement point on the test device.	

8.4 Zoom Scan

Zoom scans are used assess the peak spatial SAR values within a cubic averaging volume containing 1 gram and 10 gram of simulated tissue. The zoom scan measures points (refer to table below) within a cube shoes base faces are centered on the maxima found in a preceding area scan job within the same procedure. When the measurement is done, the zoom scan evaluates the averaged SAR for 1 gram and 10 gram and displays these values next to the job's label.

Zoom scan parameters extracted from FCC KDB 865664 D01v01r04 SAR measurement 100 MHz to 6 GHz.

		≤ 3 GHz	> 3 GHz	
Maximum zoom scan spatial resolution: $\Delta x_{Zoom}, \Delta y_{Zoom}$		≤ 2 GHz: ≤ 8 mm 2 – 3 GHz: ≤ 5 mm*	3 – 4 GHz: ≤ 5 mm* 4 – 6 GHz: ≤ 4 mm*	
Maximum zoom scan spatial resolution, normal to phantom surface	uniform grid: $\Delta z_{Zoom}(n)$	≤ 5 mm	3 – 4 GHz: ≤ 4 mm 4 – 5 GHz: ≤ 3 mm 5 – 6 GHz: ≤ 2 mm	
	graded grid	$\Delta z_{Zoom}(1)$: between 1 st two points closest to phantom surface	≤ 4 mm	3 – 4 GHz: ≤ 3 mm 4 – 5 GHz: ≤ 2.5 mm 5 – 6 GHz: ≤ 2 mm
		$\Delta z_{Zoom}(n>1)$: between subsequent points	$\leq 1.5 \cdot \Delta z_{Zoom}(n-1)$	
Minimum zoom scan volume	x, y, z	≥ 30 mm	3 – 4 GHz: ≥ 28 mm 4 – 5 GHz: ≥ 25 mm 5 – 6 GHz: ≥ 22 mm	
Note: δ is the penetration depth of a plane-wave at normal incidence to the tissue medium; see draft standard IEEE P1528-2011 for details. * When zoom scan is required and the <i>reported</i> SAR from the <i>area scan based 1-g SAR estimation</i> procedures of KDB 447498 is ≤ 1.4 W/kg, ≤ 8 mm, ≤ 7 mm and ≤ 5 mm zoom scan resolution may be applied, respectively, for 2 GHz to 3 GHz, 3 GHz to 4 GHz and 4 GHz to 6 GHz.				

8.5 Volume Scan Procedures

The volume scan is used for assess overlapping SAR distributions for antennas transmitting in different frequency bands. It is equivalent to an oversized zoom scan used in standalone measurements. The measurement volume will be used to enclose all the simultaneous transmitting antennas. For antennas transmitting simultaneously in different frequency bands, the volume scan is measured separately in each frequency band. In order to sum correctly to compute the 1g aggregate SAR, the EUT remain in the same test position for all measurements and all volume scan use the same spatial resolution and grid spacing. When all volume scan were completed, the software, SEMCAD postprocessor can combine and subsequently superpose these measurement data to calculating the multiband SAR.

8.6 Power Drift Monitoring

All SAR testing is under the EUT install full charged battery and transmit maximum output power. In DASy measurement software, the power reference measurement and power drift measurement procedures are used for monitoring the power drift of EUT during SAR test. Both these procedures measure the field at a specified reference position before and after the SAR testing. The software will calculate the field difference in dB. If the power drifts more than 5%, the SAR will be retested.



9. Test Equipment List

Manufacturer	Name of Equipment	Type/Model	Serial Number	Calibration	
				Last Cal.	Due Date
SPEAG	2450MHz System Validation Kit	D2450V2	926	Jul. 25, 2016	Jul. 24, 2017
SPEAG	5GHz System Validation Kit	D5GHzV2	1128	Jul. 27, 2016	Jul. 26, 2017
SPEAG	Data Acquisition Electronics	DAE4	1399	Nov. 23, 2015	Nov. 22, 2016
SPEAG	Dosimetric E-Field Probe	EX3DV4	3955	Nov. 24, 2015	Nov. 23, 2016
WonDer	Thermometer	WD-5015	TM281	Oct. 16, 2015	Oct. 15, 2016
WonDer	Thermometer	WD-5015	TM685	Oct. 12, 2016	Oct. 11, 2017
SPEAG	Device Holder	N/A	N/A	N/A	N/A
R&S	Signal Generator	MG3710A	6201502524	Dec. 18, 2015	Dec. 17, 2016
Agilent	ENA Network Analyzer	E5071C	MY46316648	Jan. 12, 2016	Jan. 11, 2017
SPEAG	Dielectric Probe Kit	DAK-3.5	1126	Jul. 19, 2016	Jul. 18, 2017
LINE SEIKI	Digital Thermometer	LKMelectronic	DTM3000SPEZIAL	Sep. 05, 2016	Sep. 04, 2017
Anritsu	Power Meter	ML2495A	1419002	May. 10, 2016	May. 09, 2017
Anritsu	Power Sensor	MA2411B	1339124	May. 10, 2016	May. 09, 2017
Anritsu	Spectrum Analyzer	MS2830A	6201396378	Jun. 21, 2016	Jun. 20, 2017
Mini-Circuits	Power Amplifier	ZVE-8G+	D120604	Mar. 16, 2016	Mar. 15, 2017
Mini-Circuits	Power Amplifier	ZHL-42W+	QA1344002	Mar. 16, 2016	Mar. 15, 2017
ATM	Dual Directional Coupler	C122H-10	P610410z-02	Note 1	
Woken	Attenuator 1	WK0602-XX	N/A	Note 1	
PE	Attenuator 2	PE7005-10	N/A	Note 1	
PE	Attenuator 3	PE7005- 3	N/A	Note 1	

General Note:

1. Prior to system verification and validation, the path loss from the signal generator to the system check source and the power meter, which includes the amplifier, cable, attenuator and directional coupler, was measured by the network analyzer. The reading of the power meter was offset by the path loss difference between the path to the power meter and the path to the system check source to monitor the actual power level fed to the system check source.

10. System Verification

10.1 Tissue Simulating Liquids

For the measurement of the field distribution inside the SAM phantom with DASY, the phantom must be filled with around 25 liters of homogeneous body tissue simulating liquid. For head SAR testing, the liquid height from the ear reference point (ERP) of the phantom to the liquid top surface is larger than 15 cm, which is shown in Fig. 10.1. For body SAR testing, the liquid height from the center of the flat phantom to the liquid top surface is larger than 15 cm, which is shown in Fig. 10.2.

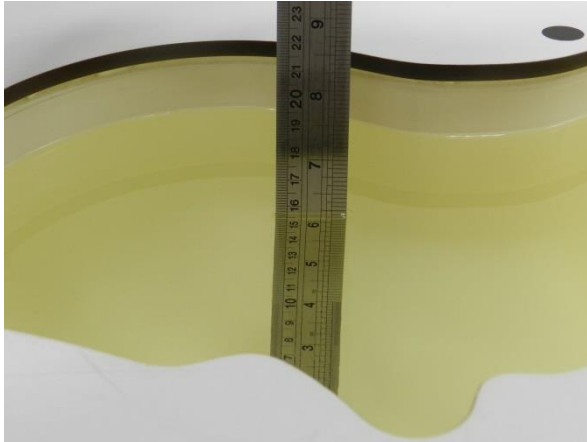


Fig 10.1 Photo of Liquid Height for Head SAR

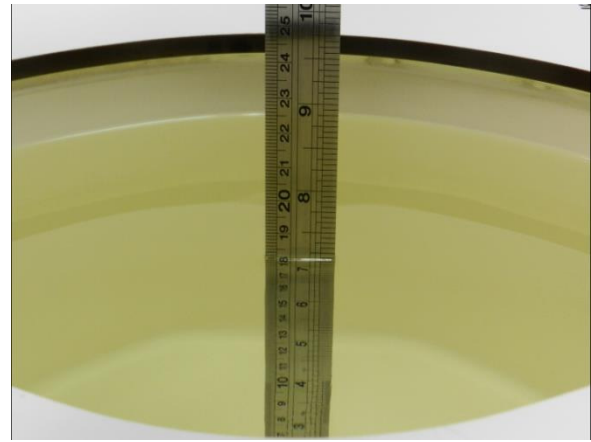


Fig 10.2 Photo of Liquid Height for Body SAR



10.2 Tissue Verification

The following tissue formulations are provided for reference only as some of the parameters have not been thoroughly verified. The composition of ingredients may be modified accordingly to achieve the desired target tissue parameters required for routine SAR evaluation.

Frequency (MHz)	Water (%)	Sugar (%)	Cellulose (%)	Salt (%)	Preventol (%)	DGBE (%)	Conductivity (σ)	Permittivity (ϵ_r)
For Head								
750	41.1	57.0	0.2	1.4	0.2	0	0.89	41.9
835	40.3	57.9	0.2	1.4	0.2	0	0.90	41.5
900	40.3	57.9	0.2	1.4	0.2	0	0.97	41.5
1800, 1900, 2000	55.2	0	0	0.3	0	44.5	1.40	40.0
2450	55.0	0	0	0	0	45.0	1.80	39.2
2600	54.8	0	0	0.1	0	45.1	1.96	39.0
For Body								
750	51.7	47.2	0	0.9	0.1	0	0.96	55.5
835	50.8	48.2	0	0.9	0.1	0	0.97	55.2
900	50.8	48.2	0	0.9	0.1	0	1.05	55.0
1800, 1900, 2000	70.2	0	0	0.4	0	29.4	1.52	53.3
2450	68.6	0	0	0	0	31.4	1.95	52.7
2600	68.1	0	0	0.1	0	31.8	2.16	52.5

Simulating Liquid for 5GHz, Manufactured by SPEAG

Ingredients	(% by weight)
Water	64~78%
Mineral oil	11~18%
Emulsifiers	9~15%
Additives and Salt	2~3%

<Tissue Dielectric Parameter Check Results>

Frequency (MHz)	Tissue Type	Liquid Temp. (°C)	Conductivity (σ)	Permittivity (ϵ_r)	Conductivity Target (σ)	Permittivity Target (ϵ_r)	Delta (σ) (%)	Delta (ϵ_r) (%)	Limit (%)	Date
2450	MSL	22.3	1.986	54.952	1.95	52.70	1.85	4.27	±5	2016/10/7
2450	MSL	22.3	1.944	53.053	1.95	52.70	-0.31	0.67	±5	2016/10/18
5250	MSL	22.3	5.389	46.935	5.36	48.95	0.54	-4.12	±5	2016/10/6
5600	MSL	22.3	5.920	46.713	5.77	48.50	2.60	-3.68	±5	2016/10/6
5750	MSL	22.3	6.121	46.454	5.94	48.28	3.05	-3.78	±5	2016/10/6

10.3 System Performance Check Results

Comparing to the original SAR value provided by SPEAG, the verification data should be within its specification of 10 %. Below table shows the target SAR and measured SAR after normalized to 1W input power. The table below indicates the system performance check can meet the variation criterion and the plots can be referred to Appendix A of this report.

Date	Frequency (MHz)	Tissue Type	Input Power (mW)	Dipole S/N	Probe S/N	DAE S/N	Measured 1g SAR (W/kg)	Targeted 1g SAR (W/kg)	Normalized 1g SAR (W/kg)	Deviation (%)
2016/10/7	2450	MSL	250	D2450V2-926	EX3DV4 - SN3955	DAE4 Sn1399	12.10	51.20	48.40	-5.47
2016/10/18	2450	MSL	250	D2450V2-926	EX3DV4 - SN3955	DAE4 Sn1399	12.40	51.20	49.60	-3.13
2016/10/6	5250	MSL	100	D5GHzV2-1128-5250	EX3DV4 - SN3955	DAE4 Sn1399	7.73	74.50	77.30	3.76
2016/10/6	5600	MSL	100	D5GHzV2-1128-5600	EX3DV4 - SN3955	DAE4 Sn1399	7.95	78.00	79.50	1.92
2016/10/6	5750	MSL	100	D5GHzV2-1128-5750	EX3DV4 - SN3955	DAE4 Sn1399	7.43	76.10	74.30	-2.37

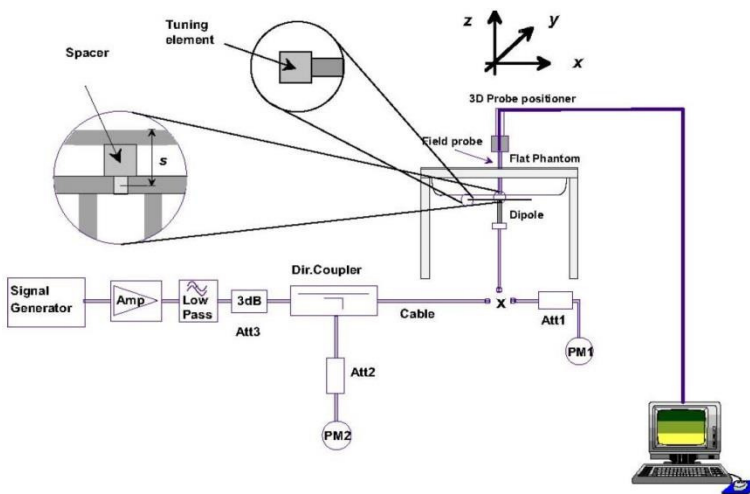


Fig 8.3.1 System Performance Check Setup



Fig 8.3.2 Setup Photo

11. RF Exposure Positions

11.1 SAR Testing for Tablet

This device can be used also in full sized tablet exposure conditions, due to its size. Per FCC KDB 616217, the back surface and edges of the tablet should be tested for SAR compliance with the tablet touching the phantom. The SAR exclusion threshold in KDB 447498 D01v06 can be applied to determine SAR test exclusion for adjacent edge configurations. The closest distance from the antenna to an adjacent tablet edge is used to determine if SAR testing is required for the adjacent edges, with the adjacent edge positioned against the phantom and the edge containing the antenna positioned perpendicular to the phantom.



12. Conducted RF Output Power (Unit: dBm)

<WLAN Conducted Power>

<2.4GHz WLAN ANT 1>

	Mode	Channel	Frequency (MHz)	Data Rate	Average power (dBm)	Tune-Up Limit	Duty Cycle %
2.4GHz WLAN ANT 1	802.11b	CH 1	2412	1Mbps	14.85	15.00	98.56
		CH 6	2437		14.93	15.00	
		CH 11	2462		14.68	15.00	
		CH 12	2467		14.82	15.00	
		CH 13	2472		14.56	15.00	
	802.11g	CH 1	2412	6Mbps	14.75	15.00	94.50
		CH 6	2437		14.91	15.00	
		CH 11	2462		14.67	15.00	
		CH 12	2467		14.72	15.00	
		CH 13	2472		-0.97	-0.50	
	802.11n-HT20	CH 1	2412	MCS0	14.67	15.00	95.00
		CH 6	2437		14.85	15.00	
		CH 11	2462		14.50	15.00	
		CH 12	2467		14.72	15.00	
		CH 13	2472		14.78	15.00	
	802.11n-HT40	CH 3	2422	MCS0	14.67	15.00	96.91
CH 6		2437	14.76		15.00		
CH 9		2452	14.60		15.00		
CH 10		2457	14.01		14.50		
CH 11		2462	1.10		1.50		

<2.4GHz WLAN ANT 2>

	Mode	Channel	Frequency (MHz)	Data Rate	Average power (dBm)	Tune-Up Limit	Duty Cycle %
2.4GHz WLAN ANT 2	802.11b	CH 1	2412	1Mbps	14.83	15.00	98.56
		CH 6	2437		14.65	15.00	
		CH 11	2462		14.92	15.00	
		CH 12	2467		14.76	15.00	
		CH 13	2472		14.82	15.00	
	802.11g	CH 1	2412	6Mbps	14.80	15.00	94.50
		CH 6	2437		14.65	15.00	
		CH 11	2462		14.86	15.00	
		CH 12	2467		14.89	15.00	
		CH 13	2472		-2.17	-2.00	
	802.11n-HT20	CH 1	2412	MCS0	14.81	15.00	95.00
		CH 6	2437		14.50	15.00	
		CH 11	2462		14.84	15.00	
		CH 12	2467		14.81	15.00	
		CH 13	2472		-2.47	-2.00	
	802.11n-HT40	CH 3	2422	MCS0	14.76	15.00	95.92
CH 6		2437	14.78		15.00		
CH 9		2452	14.72		15.00		
CH 10		2457	14.86		15.00		
CH 11		2462	1.08		1.50		



<2.4GHz WLAN ANT 1+2>

	Mode	Channel	Frequency (MHz)	Data Rate	Average power (dBm)	Tune-Up Limit	Duty Cycle %
2.4GHz WLAN ANT 1+2	802.11n-HT20	CH 1	2412	MCS0	14.50	15.00	94.12
		CH 6	2437		14.54	15.00	
		CH 11	2462		14.62	15.00	
		CH 12	2467		14.34	14.50	
		CH 13	2472		-4.40	-4.00	
	802.11n-HT40	CH 3	2422	MCS0	14.66	15.00	92.48
		CH 6	2437		14.51	15.00	
		CH 9	2452		14.46	15.00	
		CH 10	2457		12.60	13.00	
		CH 11	2462		3.35	3.50	



<5GHz WLAN ANT1>

	Mode	Channel	Frequency (MHz)	Data Rate	Average power (dBm)	Tune-Up Limit	Duty Cycle %
5.2GHz WLAN ANT 1	802.11a	CH 36	5180	6Mbps	13.35	13.50	94.50
		CH 40	5200		13.32	13.50	
		CH 44	5220		13.33	13.50	
		CH 48	5240		13.43	13.50	
	802.11n-HT20	CH 36	5180	MCS0	13.31	13.50	95.52
		CH 40	5200		13.29	13.50	
		CH 44	5220		13.39	13.50	
		CH 48	5240		13.44	13.50	
	802.11n-HT40	CH 38	5190	MCS0	13.30	13.50	96.91
		CH 46	5230		13.29	13.50	
	802.11ac-VHT20	CH 36	5180	MCS0	13.30	13.50	95.05
		CH 40	5200		13.35	13.50	
		CH 44	5220		13.37	13.50	
		CH 48	5240		13.42	13.50	
	802.11ac-VHT40	CH 38	5190	MCS0	13.31	13.50	95.96
		CH 46	5230		13.28	13.50	
802.11ac-VHT80	CH 42	5210	MCS0	13.33	13.50	94.26	

	Mode	Channel	Frequency (MHz)	Data Rate	Average power (dBm)	Tune-Up Limit	Duty Cycle %
5.3GHz WLAN ANT 1	802.11a	CH 52	5260	6Mbps	13.37	13.50	94.50
		CH 56	5280		13.36	13.50	
		CH 60	5300		13.35	13.50	
		CH 64	5320		13.26	13.50	
	802.11n-HT20	CH 52	5260	MCS0	13.30	13.50	95.52
		CH 56	5280		13.28	13.50	
		CH 60	5300		13.36	13.50	
		CH 64	5320		13.29	13.50	
	802.11n-HT40	CH 54	5270	MCS0	13.23	13.50	96.91
		CH 62	5310		13.06	13.50	
	802.11ac-VHT20	CH 52	5260	MCS0	13.28	13.50	95.05
		CH 56	5280		13.25	13.50	
		CH 60	5300		13.35	13.50	
		CH 64	5320		13.30	13.50	
	802.11ac-VHT40	CH 54	5270	MCS0	13.26	13.50	95.96
		CH 62	5310		13.08	13.50	
802.11ac-VHT80	CH 58	5290	MCS0	13.29	13.50	94.26	



	Mode	Channel	Frequency (MHz)	Data Rate	Average power (dBm)	Tune-Up Limit	Duty Cycle %
5.5GHz WLAN ANT 1	802.11a	CH 100	5500	6Mbps	13.06	13.50	94.50
		CH 116	5580		13.10	13.50	
		CH 124	5620		13.20	13.50	
		CH 132	5660		13.18	13.50	
		CH 140	5700		13.03	13.50	
		CH 144	5720		13.32	13.50	
	802.11n-HT20	CH 100	5500	MCS0	13.31	13.50	95.52
		CH 116	5580		13.22	13.50	
		CH 124	5620		13.19	13.50	
		CH 132	5660		13.20	13.50	
		CH 140	5700		13.12	13.50	
		CH 144	5720		13.25	13.50	
	802.11n-HT40	CH 102	5510	MCS0	13.27	13.50	96.91
		CH 110	5550		13.16	13.50	
		CH 126	5630		13.19	13.50	
		CH 134	5670		13.17	13.50	
	802.11ac-VHT20	CH 142	5710	MCS0	13.22	13.50	95.05
		CH 100	5500		13.30	13.50	
		CH 116	5580		13.26	13.50	
		CH 124	5620		13.29	13.50	
		CH 132	5660		13.25	13.50	
		CH 140	5700		13.12	13.50	
	802.11ac-VHT40	CH 144	5720	MCS0	13.19	13.50	95.96
		CH 102	5510		13.26	13.50	
		CH 110	5550		13.21	13.50	
		CH 126	5630		13.22	13.50	
		CH 134	5670		13.24	13.50	
802.11ac-VHT80	CH 142	5710	MCS0	13.29	13.50	94.26	
	CH 106	5530		13.22	13.50		
	CH 122	5610		13.23	13.50		
		CH 138	5690		13.30	13.50	



	Mode	Channel	Frequency (MHz)	Data Rate	Average power (dBm)	Tune-Up Limit	Duty Cycle %
5.8GHz WLAN ANT 1	802.11a	CH 149	5745	MCS0	13.22	13.50	94.50
		CH 157	5785		13.25	13.50	
		CH 165	5825		13.29	13.50	
	802.11n-HT20	CH 149	5745	MCS0	13.38	13.50	95.55
		CH 157	5785		13.35	13.50	
		CH 165	5825		13.32	13.50	
	802.11n-HT40	CH 151	5755	MCS0	13.27	13.50	96.91
		CH 159	5795		13.33	13.50	
	802.11ac-VHT20	CH 149	5745	MCS0	13.37	13.50	95.05
		CH 157	5785		13.34	13.50	
		CH 165	5825		13.31	13.50	
	802.11ac-VHT40	CH 151	5755	MCS0	13.28	13.50	95.96
CH 159		5795	13.35		13.50		
802.11ac-VHT80	CH 155	5775	MCS0	13.33	13.50	94.26	

<5GHz WLAN ANT2>

	Mode	Channel	Frequency (MHz)	Data Rate	Average power (dBm)	Tune-Up Limit	Duty Cycle %
5.2GHz WLAN ANT 2	802.11a	CH 36	5180	6Mbps	13.39	13.50	94.50
		CH 40	5200		13.22	13.50	
		CH 44	5220		13.07	13.50	
		CH 48	5240		13.12	13.50	
	802.11n-HT20	CH 36	5180	MCS0	13.37	13.50	95.03
		CH 40	5200		13.19	13.50	
		CH 44	5220		13.13	13.50	
		CH 48	5240		13.03	13.50	
	802.11n-HT40	CH 38	5190	MCS0	13.33	13.50	96.91
		CH 46	5230		13.34	13.50	
	802.11ac-VHT20	CH 36	5180	MCS0	13.32	13.50	95.05
		CH 40	5200		13.11	13.50	
		CH 44	5220		13.05	13.50	
		CH 48	5240		13.01	13.50	
	802.11ac-VHT40	CH 38	5190	MCS0	13.40	13.50	95.92
CH 46		5230	13.36		13.50		
802.11ac-VHT80	CH 42	5210	MCS0	13.21	13.50	93.44	



	Mode	Channel	Frequency (MHz)	Data Rate	Average power (dBm)	Tune-Up Limit	Duty Cycle %
5.3GHz WLAN ANT 2	802.11a	CH 52	5260	6Mbps	13.05	13.50	94.50
		CH 56	5280		13.15	13.50	
		CH 60	5300		13.08	13.50	
		CH 64	5320		13.01	13.50	
	802.11n-HT20	CH 52	5260	MCS0	13.15	13.50	95.03
		CH 56	5280		13.19	13.50	
		CH 60	5300		13.04	13.50	
		CH 64	5320		13.25	13.50	
	802.11n-HT40	CH 54	5270	MCS0	13.27	13.50	96.91
		CH 62	5310		13.25	13.50	
	802.11ac-VHT20	CH 52	5260	MCS0	13.08	13.50	95.05
		CH 56	5280		13.10	13.50	
		CH 60	5300		13.02	13.50	
		CH 64	5320		13.19	13.50	
	802.11ac-VHT40	CH 54	5270	MCS0	13.29	13.50	95.92
		CH 62	5310		13.27	13.50	
802.11ac-VHT80	CH 58	5290	MCS0	13.33	13.50	93.44	

	Mode	Channel	Frequency (MHz)	Data Rate	Average power (dBm)	Tune-Up Limit	Duty Cycle %
5.5GHz WLAN ANT 2	802.11a	CH 100	5500	6Mbps	13.10	13.50	94.50
		CH 116	5580		13.06	13.50	
		CH 124	5620		13.15	13.50	
		CH 132	5660		13.12	13.50	
		CH 140	5700		13.28	13.50	
		CH 144	5720		13.21	13.50	
	802.11n-HT20	CH 100	5500	MCS0	13.41	13.50	95.03
		CH 116	5580		13.32	13.50	
		CH 124	5620		13.29	13.50	
		CH 132	5660		13.30	13.50	
		CH 140	5700		13.38	13.50	
		CH 144	5720		13.35	13.50	
	802.11n-HT40	CH 102	5510	MCS0	13.30	13.50	96.91
		CH 110	5550		13.33	13.50	
		CH 126	5630		13.24	13.50	
		CH 134	5670		13.20	13.50	
	802.11ac-VHT20	CH 142	5710	MCS0	13.22	13.50	95.50
		CH 100	5500		13.31	13.50	
		CH 116	5580		13.26	13.50	
		CH 124	5620		13.22	13.50	
		CH 132	5660		13.24	13.50	
		CH 140	5700		13.35	13.50	
	802.11ac-VHT40	CH 144	5720	MCS0	13.36	13.50	95.92
		CH 102	5510		13.32	13.50	
		CH 110	5550		13.34	13.50	
		CH 126	5630		13.21	13.50	
		CH 134	5670		13.22	13.50	
802.11ac-VHT80	CH 142	5710	MCS0	13.19	13.50	93.44	
	CH 106	5530		13.32	13.50		
	CH 122	5610		13.29	13.50		
		CH 138	5690		13.28	13.50	



	Mode	Channel	Frequency (MHz)	Data Rate	Average power (dBm)	Tune-Up Limit	Duty Cycle %
5.8GHz WLAN ANT 2	802.11a	CH 149	5745	MCS0	13.35	13.50	94.50
		CH 157	5785		13.38	13.50	
		CH 165	5825		13.33	13.50	
	802.11n-HT20	CH 149	5745	MCS0	13.35	13.50	95.03
		CH 157	5785		13.36	13.50	
		CH 165	5825		13.20	13.50	
	802.11n-HT40	CH 151	5755	MCS0	13.27	13.50	96.91
		CH 159	5795		13.24	13.50	
	802.11ac-VHT20	CH 149	5745	MCS0	13.36	13.50	95.05
		CH 157	5785		13.32	13.50	
		CH 165	5825		13.22	13.50	
	802.11ac-VHT40	CH 151	5755	MCS0	13.28	13.50	95.92
CH 159		5795	13.26		13.50		
802.11ac-VHT80	CH 155	5775	MCS0	13.30	13.50	93.44	

<5GHz WLAN ANT1+2>

	Mode	Channel	Frequency (MHz)	Data Rate	Average power (dBm)	Tune-Up Limit	Duty Cycle %
5.2GHz WLAN ANT 1+2	802.11n-HT20	CH 36	5180	MCS0	13.43	13.50	95.10
		CH 40	5200		13.39	13.50	
		CH 44	5220		13.38	13.50	
		CH 48	5240		13.44	13.50	
	802.11n-HT40	CH 38	5190	MCS0	13.40	13.50	92.42
		CH 46	5230		13.36	13.50	
	802.11ac-VHT20	CH 36	5180	MCS0	13.36	13.50	95.15
		CH 40	5200		13.36	13.50	
		CH 44	5220		13.30	13.50	
		CH 48	5240		13.40	13.50	
	802.11ac-VHT40	CH 38	5190	MCS0	13.36	13.50	92.48
		CH 46	5230		13.33	13.50	
802.11ac-VHT80	CH 42	5210	MCS0	13.21	13.50	86.30	



	Mode	Channel	Frequency (MHz)	Data Rate	Average power (dBm)	Tune-Up Limit	Duty Cycle %
5.3GHz WLAN ANT 1+2	802.11n-HT20	CH 52	5260	MCS0	13.41	13.50	95.10
		CH 56	5280		13.39	13.50	
		CH 60	5300		13.31	13.50	
		CH 64	5320		13.24	13.50	
	802.11n-HT40	CH 54	5270	MCS0	13.34	13.50	92.42
		CH 62	5310		13.35	13.50	
	802.11ac-VHT20	MCS0	CH 52	5260	13.01	13.50	95.15
			CH 56	5280	13.29	13.50	
			CH 60	5300	13.26	13.50	
			CH 64	5320	13.20	13.50	
	802.11ac-VHT40	MCS0	CH 54	5270	13.29	13.50	92.48
			CH 62	5310	13.28	13.50	
802.11ac-VHT80	MCS0	CH 58	5290	13.33	13.50	86.30	

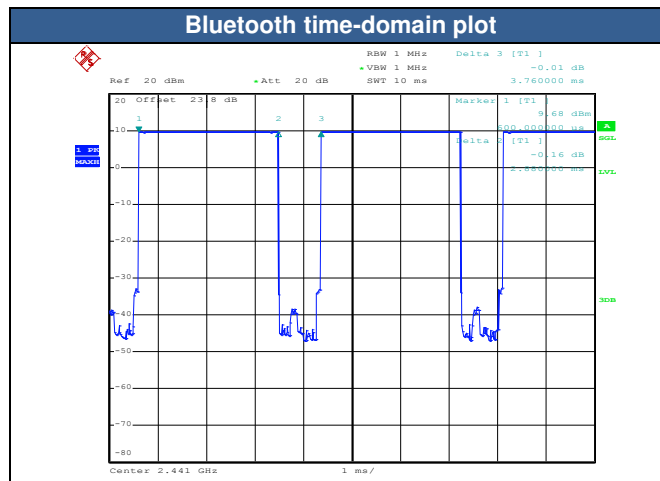
	Mode	Channel	Frequency (MHz)	Data Rate	Average power (dBm)	Tune-Up Limit	Duty Cycle %
5.5GHz WLAN ANT 1+2	802.11n-HT20	CH 100	5500	MCS0	13.31	13.50	95.10
		CH 116	5580		13.23	13.50	
		CH 124	5620		13.30	13.50	
		CH 132	5660		13.29	13.50	
		CH 140	5700		13.17	13.50	
		CH 144	5720		13.22	13.50	
	802.11n-HT40	MCS0	CH 102	5510	13.27	13.50	92.42
			CH 110	5550	13.32	13.50	
			CH 126	5630	13.36	13.50	
			CH 134	5670	13.16	13.50	
	802.11ac-VHT20	MCS0	CH 142	5710	13.15	13.50	95.15
			CH 100	5500	13.25	13.50	
			CH 116	5580	13.23	13.50	
			CH 124	5620	13.19	13.50	
			CH 132	5660	13.13	13.50	
	802.11ac-VHT40	MCS0	CH 140	5700	13.13	13.50	92.48
			CH 144	5720	13.19	13.50	
			CH 102	5510	13.21	13.50	
			CH 110	5550	13.27	13.50	
			CH 126	5630	13.25	13.50	
	802.11ac-VHT80	MCS0	CH 134	5670	13.07	13.50	86.30
			CH 142	5710	13.11	13.50	
			CH 106	5530	13.26	13.50	
			CH 122	5610	13.32	13.50	
		CH 138	5690		13.28	13.50	

5.8GHz WLAN ANT 1+2	Mode	Channel	Frequency (MHz)	Data Rate	Average power (dBm)	Tune-Up Limit	Duty Cycle %
	802.11n-HT20	CH 149	5745	MCS0	13.28	13.50	95.10
		CH 157	5785		13.27		
		CH 165	5825		13.30		
	802.11n-HT40	CH 151	5755	MCS0	13.24	13.50	92.42
		CH 159	5795		13.30		
	802.11ac-VHT20	CH 149	5745	MCS0	13.24	13.50	95.15
		CH 157	5785		13.26		
		CH 165	5825		13.28		
	802.11ac-VHT40	CH 151	5755	MCS0	13.25	13.50	92.48
CH 159		5795	13.22				
802.11ac-VHT80	CH 155	5775	MCS0	13.31	13.50	86.30	

<2.4GHz Bluetooth>

Mode	Channel	Frequency (MHz)	Average power (dBm)		
			1Mbps	2Mbps	3Mbps
BR / EDR	CH 00	2402	9.09	5.87	4.87
	CH 39	2441	9.84	6.23	5.33
	CH 78	2480	8.35	4.59	4.07
Tune-up Limit			11.8	6.5	5.5

Mode	Channel	Frequency (MHz)	Average power (dBm)
			GFSK
LE	CH 00	2402	4.97
	CH 19	2440	4.67
	CH 39	2480	2.95
Tune-up Limit			5



13. SAR Test Results

General Note:

1. Per KDB 447498 D01v06, the reported SAR is the measured SAR value adjusted for maximum tune-up tolerance.
 - a. Tune-up scaling Factor = tune-up limit power (mW) / EUT RF power (mW), where tune-up limit is the maximum rated power among all production units.
 - b. For SAR testing of WLAN signal with non-100% duty cycle, the measured SAR is scaled-up by the duty cycle scaling factor which is equal to "1/(duty cycle)"
 - c. For Bluetooth: Reported SAR(W/kg)= Measured SAR(W/kg)*Tune-up Scaling Factor
 - d. For WLAN: Reported SAR(W/kg)= Measured SAR(W/kg)* Duty Cycle scaling factor * Tune-up scaling factor
2. Per KDB 447498 D01v06, for each exposure position, testing of other required channels within the operating mode of a frequency band is not required when the *reported* 1-g or 10-g SAR for the mid-band or highest output power channel is:
 - ≤ 0.8 W/kg or 2.0 W/kg, for 1-g or 10-g respectively, when the transmission band is ≤ 100 MHz
 - ≤ 0.6 W/kg or 1.5 W/kg, for 1-g or 10-g respectively, when the transmission band is between 100 MHz and 200 MHz
 - ≤ 0.4 W/kg or 1.0 W/kg, for 1-g or 10-g respectively, when the transmission band is ≥ 200 MHz
3. Per KDB 865664 D01v01r04, for each frequency band, repeated SAR measurement is required only when the measured SAR is ≥0.8W/kg.
4. During SAR testing the WLAN transmission was verified using a spectrum analyzer.
5. According to TCB workshop October 2016, when the highest reported SAR of an antenna is > 1.2 W/kg, holder perturbation verification is required for each antenna, using the highest SAR configuration among all applicable frequency bands.
6. For the body SAR measurement was used a low-loss foam block performed testing, the relative permittivity and loss tangent of the foam material is 1.0 and 10⁻⁵, respectively, therefore holder perturbation verification is not required even highest reported SAR is >1.2W/kg.
7. Highest SAR summary and Sim-Tx analysis evaluation is select higher value of either original SAR result or spot checks SAR result.

13.1 Spot check of Body SAR

<WLAN SAR>

Plot No.	Band	Mode	Test Position	Gap (mm)	Antenna	Ch.	Freq. (MHz)	Average Power (dBm)	Tune-Up Limit (dBm)	Tune-up Scaling Factor	Duty Cycle %	Duty Cycle Scaling Factor	Power Drift (dB)	Measured 1g SAR (W/kg)	Reported 1g SAR (W/kg)
01	WLAN2.4GHz	802.11b 1Mbps	Bottom Face	0mm	Ant 1	6	2437	14.93	15.00	1.016	98.56	1.015	-0.03	0.775	0.799
	WLAN2.4GHz	802.11b 1Mbps	Bottom Face	0mm	Ant 2	11	2462	14.92	15.00	1.018	98.56	1.015	0.01	0.602	0.622
02	WLAN5GHz	802.11ac-VHT80 MCS0	Bottom Face	0mm	Ant 1	58	5290	13.29	13.50	1.050	94.26	1.061	0.03	1.054	1.137
	WLAN5GHz	802.11n-HT40 MCS0	Edge 1	0mm	Ant 2	54	5270	13.27	13.50	1.054	96.91	1.032	-0.17	0.726	0.790
	WLAN5GHz	802.11ac-VHT80 MCS0	Bottom Face	0mm	Ant 1	138	5690	13.30	13.50	1.047	94.26	1.061	0.14	0.816	0.907
03	WLAN5GHz	802.11ac-VHT80 MCS0	Bottom Face	0mm	Ant 2	138	5690	13.28	13.50	1.052	93.44	1.070	0.11	0.951	1.070
	WLAN5GHz	802.11n-HT40 MCS0	Bottom Face	0mm	Ant 1	159	5795	13.33	13.50	1.041	96.91	1.032	0.18	0.852	0.915
04	WLAN5GHz	802.11n-HT40 MCS0	Bottom Face	0mm	Ant 2	151	5755	13.27	13.50	1.055	96.91	1.032	0.08	0.925	1.007

<Bluetooth SAR>

Plot No.	Band	Mode	Test Position	Gap (mm)	Antenna	Ch.	Freq. (MHz)	Average Power (dBm)	Tune-Up Limit (dBm)	Tune-up Scaling Factor	Duty Cycle %	Duty Cycle Scaling Factor	Power Drift (dB)	Measured 1g SAR (W/kg)	Reported 1g SAR (W/kg)
05	Bluetooth	1Mbps	Bottom Face	0mm	Ant 2	39	2441	9.84	11.80	1.572	76.6	1.087	-0.03	0.061	0.104



14. Simultaneous Transmission Analysis

NO.	Simultaneous Transmission Configurations	Body
1.	WLAN Antenna 1+ Bluetooth Antenna 2	Yes
2.	WLAN Antenna 1 + WLAN Antenna 2	Yes

General Note:

1. Sim-Tx analysis evaluation is select higher value of either original SAR result or spot checks SAR result, the original SAR result can refer to (Sporton SAR Report No. FA5N2711-08, FCC ID: PU5- TP00082ASI) or Appendix D.
2. The worst case WLAN reported SAR for each configuration was used for SAR summation. Therefore, the following summations represent the absolute worst cases for simultaneous transmission with WLAN.
3. WLAN and Bluetooth share the same antenna 2, and cannot transmit simultaneously.
4. EUT will choose either WLAN 2.4GHz or WLAN 5GHz according to the network signal condition; therefore, 2.4GHz WLAN and 5GHz WLAN will not operate simultaneously at any moment.
5. The Scaled SAR summation is calculated based on the same configuration and test position.
6. Per KDB 447498 D01v06, simultaneous transmission SAR is compliant if,
 - i) Scalar SAR summation < 1.6W/kg.
 - ii) $SPLSR = (SAR1 + SAR2)^{1.5} / (\text{min. separation distance, mm})$, and the peak separation distance is determined from the square root of $[(x1-x2)^2 + (y1-y2)^2 + (z1-z2)^2]$, where (x1, y1, z1) and (x2, y2, z2) are the coordinates of the extrapolated peak SAR locations in the zoom scan.
 - iii) If $SPLSR \leq 0.04$, simultaneously transmission SAR measurement is not necessary.
 - iv) Simultaneously transmission SAR measurement, and the reported multi-band SAR < 1.6W/kg.
 - v) The SPLSR calculated results please refer to section 14.2.

14.1 Body Exposure Conditions

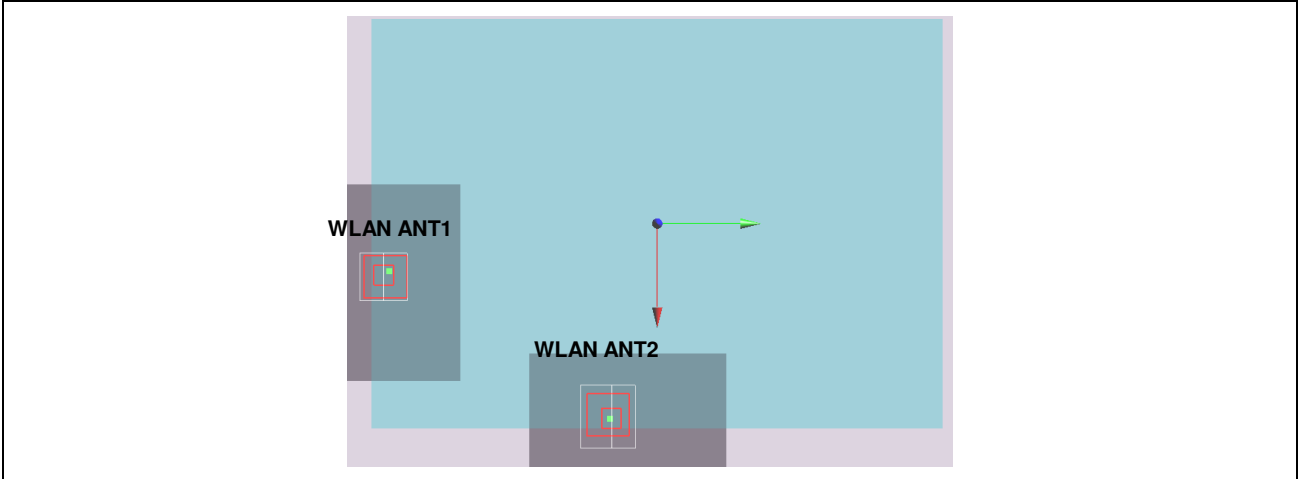
Exposure Position	1	2	3	4	5	1+2 Summed 1g SAR (W/kg)	1+5 Summed 1g SAR (W/kg)	3+4 Summed 1g SAR (W/kg)	3+5 Summed 1g SAR (W/kg)	1+2 SPLSR	1+2 Case No	3+4 SPLSR	3+4 Case No
	2.4GHz WLAN Ant 1 1g SAR (W/kg)	2.4GHz WLAN Ant 2 1g SAR (W/kg)	5GHz WLAN Ant 1 1g SAR (W/kg)	5GHz WLAN Ant 2 1g SAR (W/kg)	Bluetooth Ant 2 1g SAR (W/kg)								
Bottom Face at 0mm	0.982	0.622	1.137	1.182	0.104	1.604	1.086	2.319	1.241	0.01	Case 1	0.03	Case 2
Edge 1 at 0mm		0.541		0.919	0.080	0.541	0.080	0.919	0.080				
Edge 4 at 0mm	0.400		0.861			0.400	0.400	0.861	0.861				

14.2 SPLSR Evaluation and Analysis

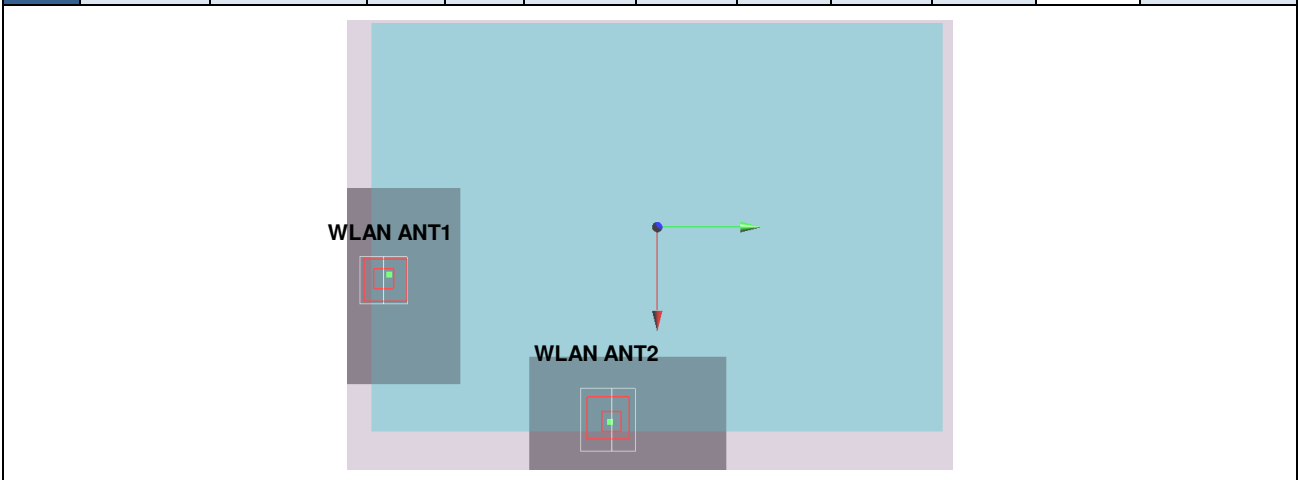
General Note:

- SPLSR = $(SAR_1 + SAR_2)^{1.5} / (\text{min. separation distance, mm})$. If $SPLSR \leq 0.04$, simultaneously transmission SAR measurement is not necessary

Case 1	Band	Position	SAR (W/kg)	Gap (cm)	SAR peak location (m)			3D distance (mm)	Summed SAR (W/kg)	SPLSR Results	Simultaneous SAR
	2.4GHz ANT1				X	Y	Z				
	2.4GHz ANT1	Bottom Face	0.982	0mm	20.2	-139	3.08	138.8	1.60	0.01	Not required
	2.4GHz ANT2		0.622	0mm	99.4	-25	2.33				



Case 2	Band	Position	SAR (W/kg)	Gap (cm)	SAR peak location (m)			3D distance (mm)	Summed SAR (W/kg)	SPLSR Results	Simultaneous SAR
	5GHz ANT1				X	Y	Z				
	5GHz ANT1	Bottom Face	1.137	0mm	19	-135	3.44	132.6	2.32	0.03	Not required
	5GHz ANT2		1.182	0mm	94	-25.6	3.13				



Test Engineer : Tom Jiang and Kurt Liu

15. Uncertainty Assessment

The component of uncertainty may generally be categorized according to the methods used to evaluate them. The evaluation of uncertainty by the statistical analysis of a series of observations is termed a Type A evaluation of uncertainty. The evaluation of uncertainty by means other than the statistical analysis of a series of observation is termed a Type B evaluation of uncertainty. Each component of uncertainty, however evaluated, is represented by an estimated standard deviation, termed standard uncertainty, which is determined by the positive square root of the estimated variance.

A Type A evaluation of standard uncertainty may be based on any valid statistical method for treating data. This includes calculating the standard deviation of the mean of a series of independent observations; using the method of least squares to fit a curve to the data in order to estimate the parameter of the curve and their standard deviations; or carrying out an analysis of variance in order to identify and quantify random effects in certain kinds of measurement.

A type B evaluation of standard uncertainty is typically based on scientific judgment using all of the relevant information available. These may include previous measurement data, experience, and knowledge of the behavior and properties of relevant materials and instruments, manufacture’s specification, data provided in calibration reports and uncertainties assigned to reference data taken from handbooks. Broadly speaking, the uncertainty is either obtained from an outdoor source or obtained from an assumed distribution, such as the normal distribution, rectangular or triangular distributions indicated in table below.

Uncertainty Distributions	Normal	Rectangular	Triangular	U-Shape
Multi-plying Factor ^(a)	1/k ^(b)	1/√3	1/√6	1/√2

(a) standard uncertainty is determined as the product of the multiplying factor and the estimated range of variations in the measured quantity

(b) κ is the coverage factor

Table 15.1. Standard Uncertainty for Assumed Distribution

The combined standard uncertainty of the measurement result represents the estimated standard deviation of the result. It is obtained by combining the individual standard uncertainties of both Type A and Type B evaluation using the usual “root-sum-squares” (RSS) methods of combining standard deviations by taking the positive square root of the estimated variances.

Expanded uncertainty is a measure of uncertainty that defines an interval about the measurement result within which the measured value is confidently believed to lie. It is obtained by multiplying the combined standard uncertainty by a coverage factor. Typically, the coverage factor ranges from 2 to 3. Using a coverage factor allows the true value of a measured quantity to be specified with a defined probability within the specified uncertainty range. For purpose of this document, a coverage factor two is used, which corresponds to confidence interval of about 95 %. The DASY uncertainty Budget is shown in the following tables.

Error Description	Uncertainty Value (±%)	Probability	Divisor	(Ci) 1g	(Ci) 10g	Standard Uncertainty (1g) (±%)	Standard Uncertainty (10g) (±%)
Measurement System							
Probe Calibration	6.0	N	1	1	1	6.0	6.0
Axial Isotropy	4.7	R	1.732	0.7	0.7	1.9	1.9
Hemispherical Isotropy	9.6	R	1.732	0.7	0.7	3.9	3.9
Boundary Effects	1.0	R	1.732	1	1	0.6	0.6
Linearity	4.7	R	1.732	1	1	2.7	2.7
System Detection Limits	1.0	R	1.732	1	1	0.6	0.6
Modulation Response	3.2	R	1.732	1	1	1.8	1.8
Readout Electronics	0.3	N	1	1	1	0.3	0.3
Response Time	0.0	R	1.732	1	1	0.0	0.0
Integration Time	2.6	R	1.732	1	1	1.5	1.5
RF Ambient Noise	3.0	R	1.732	1	1	1.7	1.7
RF Ambient Reflections	3.0	R	1.732	1	1	1.7	1.7
Probe Positioner	0.4	R	1.732	1	1	0.2	0.2
Probe Positioning	2.9	R	1.732	1	1	1.7	1.7
Max. SAR Eval.	2.0	R	1.732	1	1	1.2	1.2
Test Sample Related							
Device Positioning	3.0	N	1	1	1	3.0	3.0
Device Holder	3.6	N	1	1	1	3.6	3.6
Power Drift	5.0	R	1.732	1	1	2.9	2.9
Power Scaling	0.0	R	1.732	1	1	0.0	0.0
Phantom and Setup							
Phantom Uncertainty	6.1	R	1.732	1	1	3.5	3.5
SAR correction	0.0	R	1.732	1	0.84	0.0	0.0
Liquid Conductivity Repeatability	0.2	N	1	0.78	0.71	0.1	0.1
Liquid Conductivity (target)	5.0	R	1.732	0.78	0.71	2.3	2.0
Liquid Conductivity (mea.)	2.5	R	1.732	0.78	0.71	1.1	1.0
Temp. unc. - Conductivity	3.4	R	1.732	0.78	0.71	1.5	1.4
Liquid Permittivity Repeatability	0.15	N	1	0.23	0.26	0.0	0.0
Liquid Permittivity (target)	5.0	R	1.732	0.23	0.26	0.7	0.8
Liquid Permittivity (mea.)	2.5	R	1.732	0.23	0.26	0.3	0.4
Temp. unc. - Permittivity	0.83	R	1.732	0.23	0.26	0.1	0.1
Combined Std. Uncertainty						11.4%	11.4%
Coverage Factor for 95 %						K=2	K=2
Expanded STD Uncertainty						22.9%	22.7%

Table 15.2. Uncertainty Budget for frequency range 300 MHz to 3 GHz



Error Description	Uncertainty Value (±%)	Probability	Divisor	(Ci) 1g	(Ci) 10g	Standard Uncertainty (1g) (±%)	Standard Uncertainty (10g) (±%)
Measurement System							
Probe Calibration	7.0	N	1	1	1	7.0	7.0
Axial Isotropy	4.7	R	1.732	0.7	0.7	1.9	1.9
Hemispherical Isotropy	9.6	R	1.732	0.7	0.7	3.9	3.9
Boundary Effects	2.0	R	1.732	1	1	1.2	1.2
Linearity	4.7	R	1.732	1	1	2.7	2.7
System Detection Limits	1.0	R	1.732	1	1	0.6	0.6
Modulation Response	3.2	R	1.732	1	1	1.8	1.8
Readout Electronics	0.3	N	1	1	1	0.3	0.3
Response Time	0.0	R	1.732	1	1	0.0	0.0
Integration Time	2.6	R	1.732	1	1	1.5	1.5
RF Ambient Noise	3.0	R	1.732	1	1	1.7	1.7
RF Ambient Reflections	3.0	R	1.732	1	1	1.7	1.7
Probe Positioner	0.4	R	1.732	1	1	0.2	0.2
Probe Positioning	6.7	R	1.732	1	1	3.9	3.9
Max. SAR Eval.	4.0	R	1.732	1	1	2.3	2.3
Test Sample Related							
Device Positioning	3.0	N	1	1	1	3.0	3.0
Device Holder	3.6	N	1	1	1	3.6	3.6
Power Drift	5.0	R	1.732	1	1	2.9	2.9
Power Scaling	0.0	R	1.732	1	1	0.0	0.0
Phantom and Setup							
Phantom Uncertainty	6.6	R	1.732	1	1	3.8	3.8
SAR correction	0.0	R	1.732	1	0.84	0.0	0.0
Liquid Conductivity Repeatability	0.2	N	1	0.78	0.71	0.1	0.1
Liquid Conductivity (target)	5.0	R	1.732	0.78	0.71	2.3	2.0
Liquid Conductivity (mea.)	2.5	R	1.732	0.78	0.71	1.1	1.0
Temp. unc. - Conductivity	3.4	R	1.732	0.78	0.71	1.5	1.4
Liquid Permittivity Repeatability	0.15	N	1	0.23	0.26	0.0	0.0
Liquid Permittivity (target)	5.0	R	1.732	0.23	0.26	0.7	0.8
Liquid Permittivity (mea.)	2.5	R	1.732	0.23	0.26	0.3	0.4
Temp. unc. - Permittivity	0.83	R	1.732	0.23	0.26	0.1	0.1
Combined Std. Uncertainty						12.8%	12.7%
Coverage Factor for 95 %						K=2	K=2
Expanded STD Uncertainty						25.5%	25.4%

Table 15.3. Uncertainty Budget for frequency range 3 GHz to 6 GHz



16. References

- [1] FCC 47 CFR Part 2 "Frequency Allocations and Radio Treaty Matters; General Rules and Regulations"
- [2] ANSI/IEEE Std. C95.1-1992, "IEEE Standard for Safety Levels with Respect to Human Exposure to Radio Frequency Electromagnetic Fields, 3 kHz to 300 GHz", September 1992
- [3] IEEE Std. 1528-2013, "IEEE Recommended Practice for Determining the Peak Spatial-Average Specific Absorption Rate (SAR) in the Human Head from Wireless Communications Devices: Measurement Techniques", Sep 2013
- [4] SPEAG DASY System Handbook
- [5] FCC KDB 248227 D01 v02r02, "SAR Guidance for IEEE 802.11 (WiFi) Transmitters", Oct 2015.
- [6] FCC KDB 447498 D01 v06, "Mobile and Portable Device RF Exposure Procedures and Equipment Authorization Policies", Oct 2015
- [7] FCC KDB 616217 D04 v01r02, "SAR Evaluation Considerations for Laptop, Notebook, Netbook and Tablet Computers", Oct 2015
- [8] FCC KDB 865664 D01 v01r04, "SAR Measurement Requirements for 100 MHz to 6 GHz", Aug 2015.
- [9] FCC KDB 865664 D02 v01r02, "RF Exposure Compliance Reporting and Documentation Considerations" Oct 2015.