

Regulatory Bluetooth Antenna Information

(English Language Required for Intel Regulatory Review / Approval)

**(OEM/ODM or antenna vendor is required to complete this document with platform antenna information.
Remove Intel references and make this your own document)**

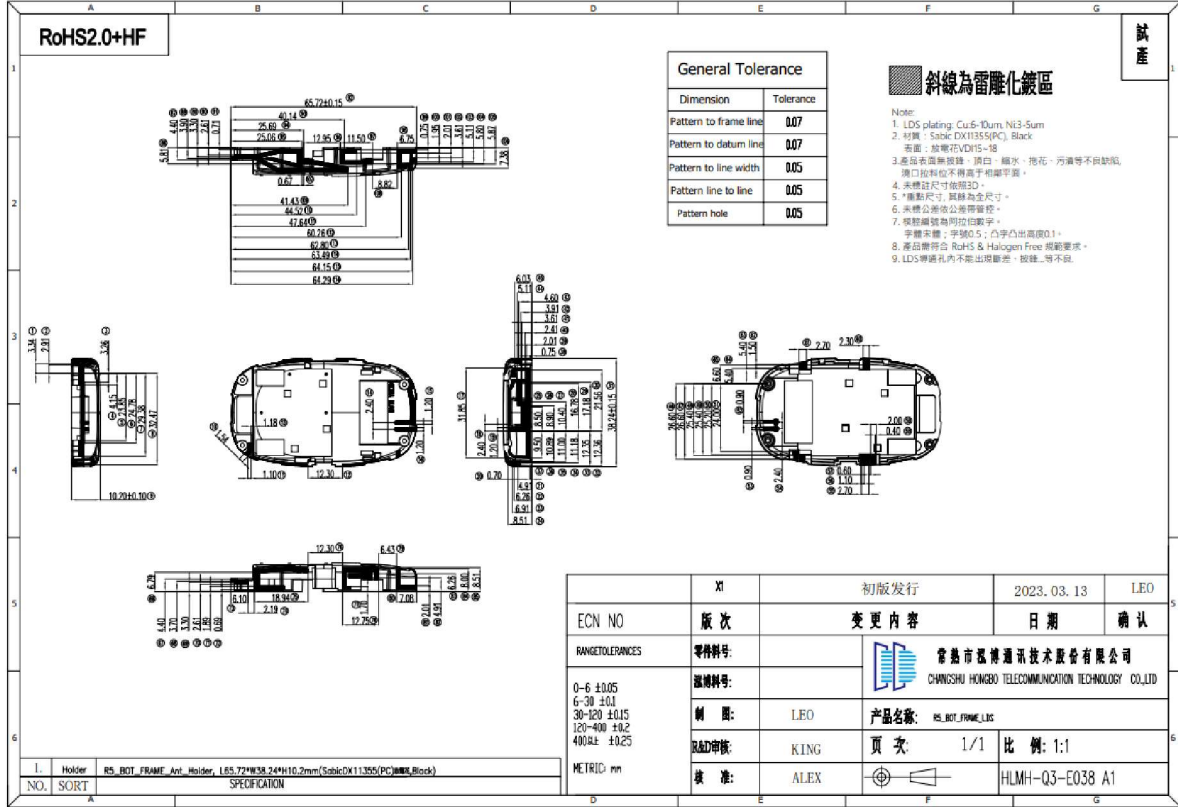
Specification

PART NAME:	R5 Bluetooth Antenna
DEVE NUMBER:	
WISTRON P/N:	025.902A7.0001
WBASE P/N:	
Ant. type(LDS):	BT Ant.
DATE:	
DATASHEET REVISION:	00
MANUFATURE:	Hongbo

Summary table

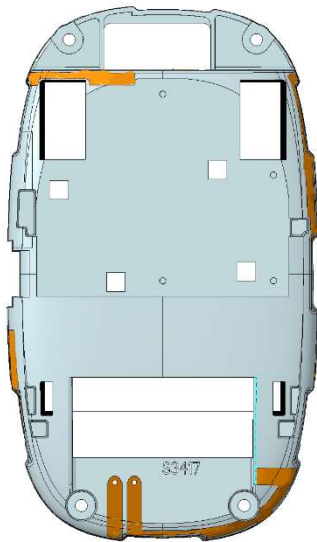
Check Item	Information	Page
Brand name	Wistron	1
Model name(Part number)	025.902A7.0001	1
manufacturer	Wistron	1
Test data	Included frequency, antenna gain, type	4~6
Antenna pattern	Included antenna pattern	2~3

Antenna 2D Drawing

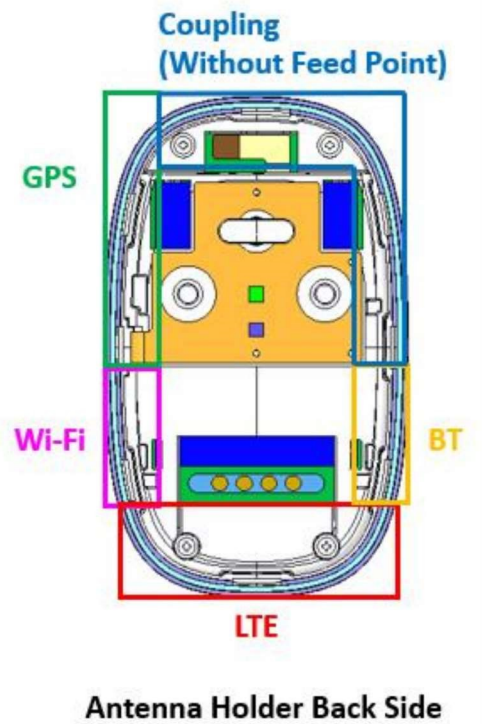


Antenna 3D Drawing and Photograph

Antenna 3D Drawing



R5 Antenna Allocation



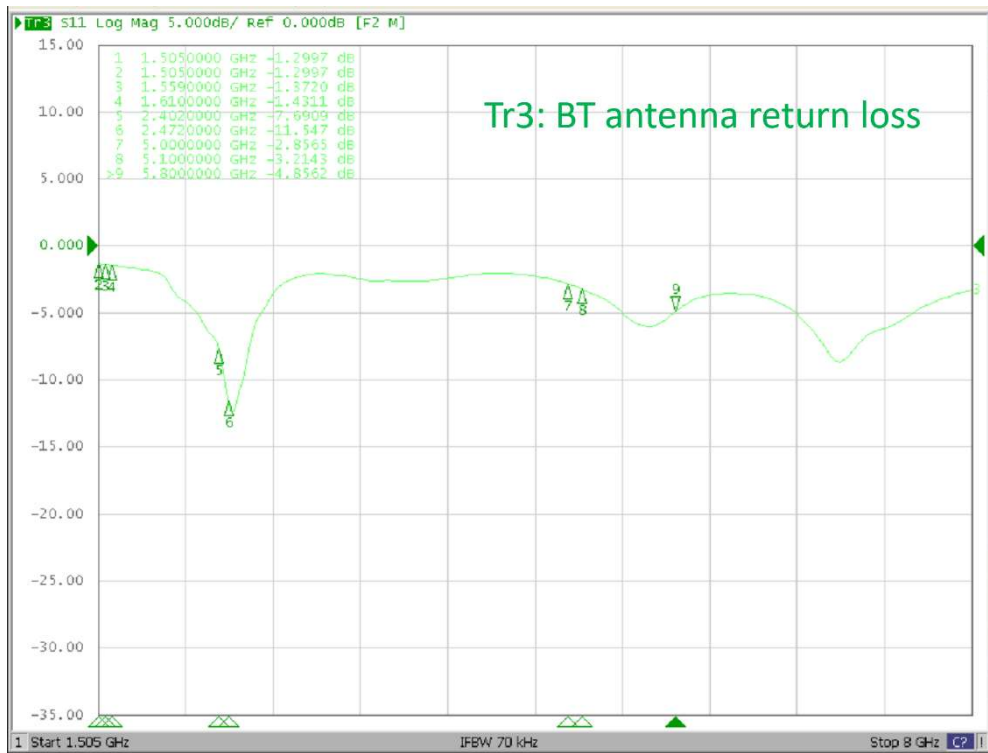
Antenna Performance

BT Ant. (TRX antenna)

◆ Description

Frequency Range	2400~2500MHz
Impedance	50Ω
Return loss	As shown below S11
Peak Gain	0.44dBi @ 2500MHz
Admitted Power	N/A
Cable	N/A
Antenna Type	PIFA
Connector	N/A
Process	LDS

◆ Antenna Return Loss

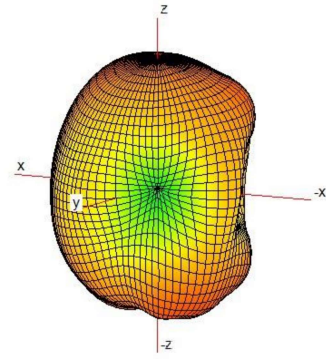
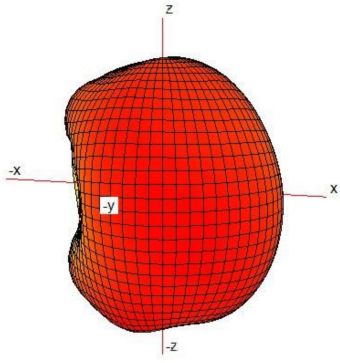


◆ Antenna Efficiency

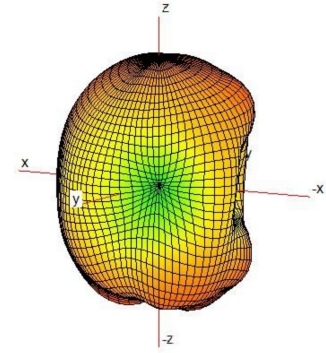
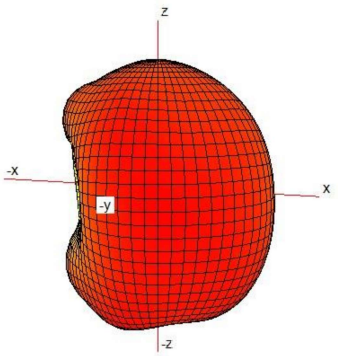
Bluetooth SKU Ant.0 performance		
Ant.0	Avg. Gain	Peak Gain
2400	-3.41	0.29
2410	-3.32	0.37
2420	-3.36	0.16
2430	-3.28	0.25
2440	-3.28	0.22
2450	-3.28	0.31
2460	-3.29	0.34
2470	-3.24	0.34
2480	-3.20	0.27
2490	-3.19	0.30
2500	-3.17	0.44

◆ Antenna 3D Radiation Pattern

Frequency: 2410MHz



Frequency: 2440MHz



Frequency: 2460MHz

