

# Regulatory WWAN Antenna Information

(English Language Required for Intel Regulatory Review / Approval)

**(OEM/ODM or antenna vendor is required to complete this document with platform antenna information. Remove Intel references and make this your own document)**

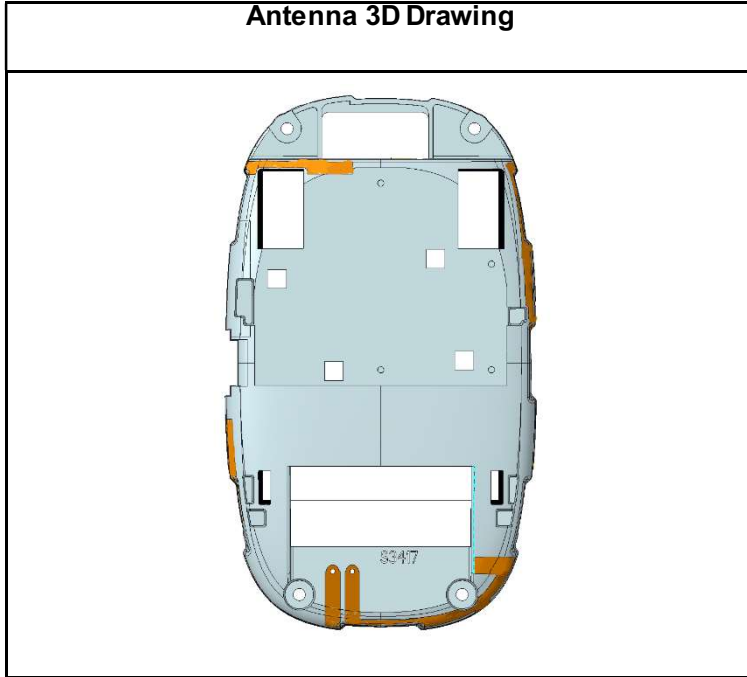
## Specification

<b>CUSTOMER:</b>	<b>WiBASE</b>
<b>PART NAME:</b>	<b>R5 WWAN Antenna</b>
<b>DEVE NUMBER:</b>	
<b>WISTRON P/N:</b>	<b>025.902A7.0001</b>
<b>WiBASE P/N:</b>	
<b>Ant. type(coupling Feed):</b>	<b>LTE Ant</b>
<b>DATE:</b>	
<b>DATASHEET REVISION:</b>	<b>00</b>
<b>MANUFACTURE:</b>	<b>HONGBO</b>

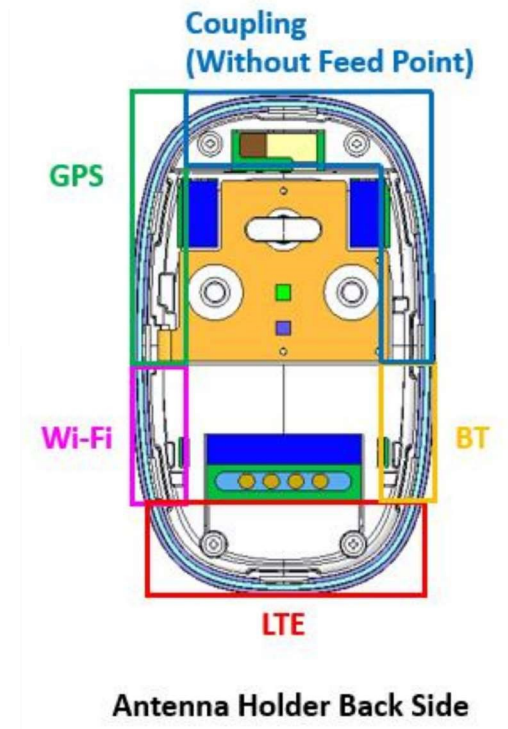
**Summary table**

Check Item	Information	Page
Brand name	Wistron	1
Model name(Part number)	025.902A7.0001	1
manufacturer	Wistron	1
Test data	Included frequency, antenna gain, type	3~6
Antenna pattern	Included antenna pattern	2

**Antenna 3D Drawing and Photograph**



**R5 Antenna Allocation**



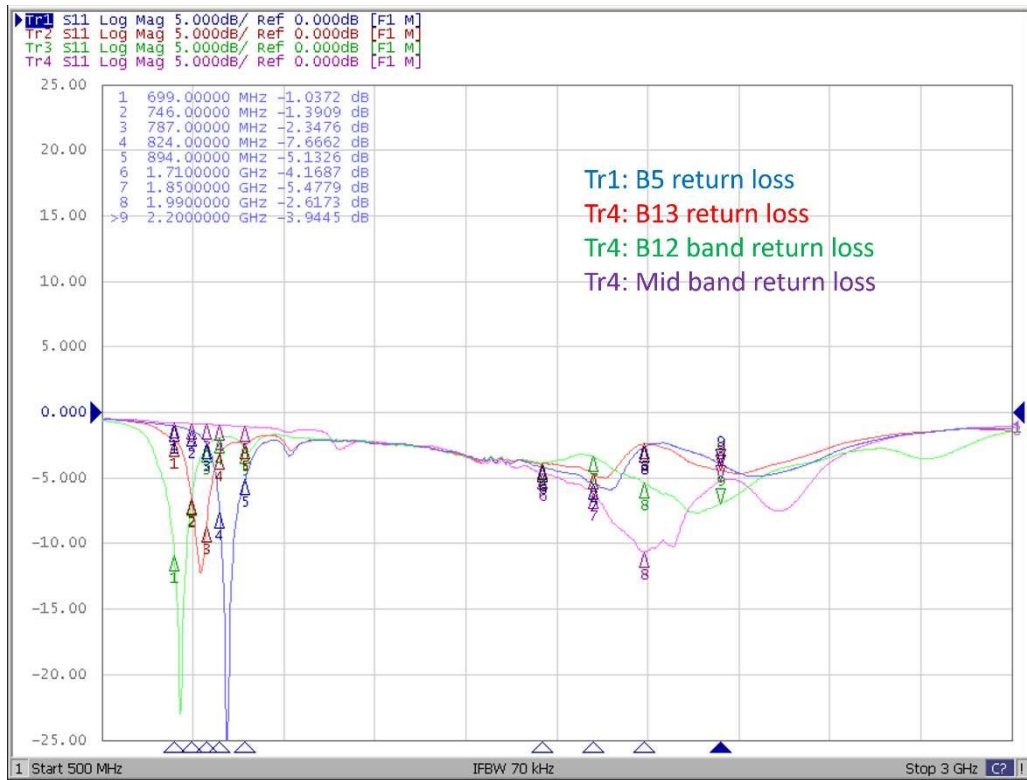
## Antenna Performance

### Ant. 0 (TRX antenna)

#### ◆ Description

Frequency Range	699~894MHz, 1710~2200MHz
Impedance	50Ω
Return loss	As shown below S11
Peak Gain	2.38dBi @ 1980MHz
Admitted Power	N/A
Cable	N/A
Antenna Type	Coupling Feed
Connector	N/A
Process	LDS

#### ◆ Antenna Return Loss



◆ Antenna Efficiency

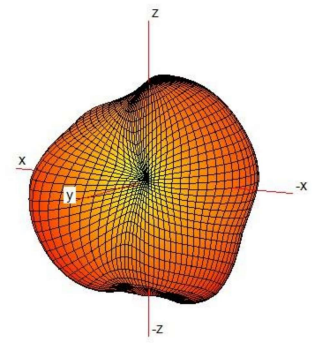
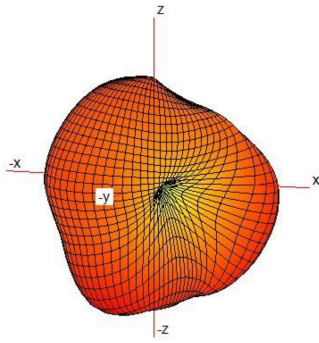
WWAN SKU Ant.0 performance		
Ant.0	Avg. Gain	Peak Gain
699	-7.72	-4.15
703	-8.02	-4.40
704	-7.97	-4.33
707	-7.86	-4.26
710	-7.76	-4.20
715	-7.64	-4.11
716	-7.64	-4.11
729	-7.98	-4.55
734	-8.15	-4.85
737	-8.28	-5.03
740	-8.42	-5.15
745	-8.62	-5.43
746	-8.66	-5.29

WWAN SKU Ant.0 performance		
Ant.0	Avg. Gain	Peak Gain
746	-8.01	-4.60
748	-7.74	-4.39
751	-7.34	-4.05
756	-6.79	-3.55
777	-6.17	-3.20
780	-6.23	-3.23
782	-6.31	-3.30
787	-6.56	-3.57

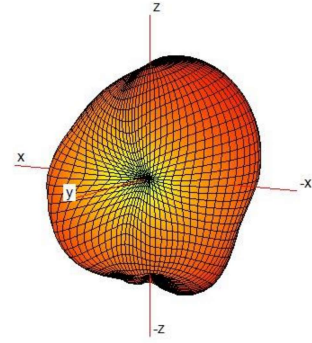
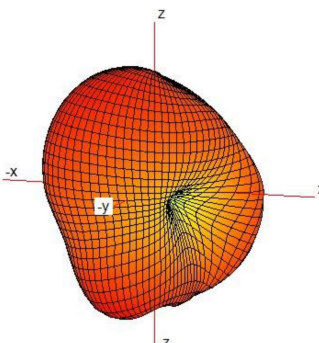
WWAN SKU Ant.0 performance		
Ant.0	Avg. Gain	Peak Gain
824	-8.00	-5.43
830	-7.23	-4.67
831.5	-7.07	-4.52
832	-7.01	-4.46
836	-6.62	-4.00
838	-6.45	-3.81
845	-6.00	-3.43
847	-5.90	-3.37
849	-5.80	-3.30
869	-5.67	-3.30
875	-5.78	-3.37
876.5	-5.84	-3.45
880	-5.97	-3.66
883	-6.06	-3.76
890	-6.24	-3.98
894	-6.37	-4.12

WWAN SKU Ant.0 performance		
Ant.0	Avg. Gain	Peak Gain
1710	-4.29	-0.72
1732	-3.86	-0.14
1745	-3.68	0.30
1750	-3.66	0.36
1755	-3.62	0.46
1780	-3.45	0.70
1850	-3.31	1.01
1880	-3.12	1.40
1882	-3.10	1.42
1900	-2.60	1.94
1910	-2.23	2.24
1930	-2.26	2.09
1950	-2.25	2.15
1960	-2.17	2.17
1962	-2.20	2.16
1980	-2.10	2.38
1990	-2.11	2.27
2110	-3.94	0.39
2132	-4.44	-0.42
2140	-4.71	-0.79
2155	-5.14	-1.42
2170	-5.49	-2.03
2200	-5.89	-2.53

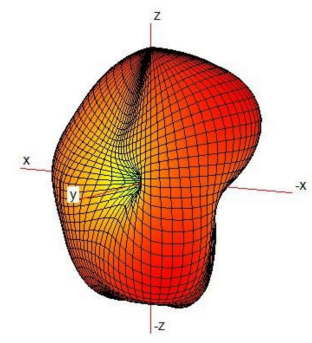
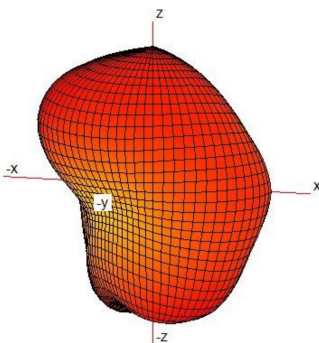
Frequency: 707MHz



Frequency: 782MHz



Frequency: 836MHz



Frequency: 1745MHz

