



EtherBridge

Easily add 802.11b Wireless capabilities to any Ethernet product

The TROY EtherBridge is a compact high-performance wireless network interface which allows any Ethernet enabled device to become an 802.11b wireless network device, giving you freedom to place it anywhere in your facility. The industrialized hardware and included mounting kit make it especially suitable for connecting Ethernet enabled printers, scanners, and multifunction printers (MFPs) to the wireless network without having to change any of the drivers or management utilities that you normally use. The EtherBridge will also bring 802.11b wireless capabilities to any other Ethernet enabled product such as desktop or laptop computers, networked point of sale terminals, and networked industrial control devices.

Compatible with Wireless Standards

The TROY EtherBridge supports Direct Sequence Spread Spectrum (DSSS) operation with automatic selection of 1, 2, 5.5 and 11Mbps speeds depending on environmental conditions. It handles Open System or optional Shared Key support (shared key is available only to systems with encryption capabilities) and supports normal or 802.11b WEP encryption (40-bit, 64-bit and 128-bit) modes. It has an external antenna and works in conjunction with any 802.11b wireless access point up to 300 feet (90 meters) away.

Easy to Configure

The EtherBridge includes an easy to use Windows utility for configuring the Wireless parameters and management TCP/IP settings in just a few minutes. It can also be easily configured from any operating system (including Linux, Unix, Macintosh, etc.) by using a standard Web browser such as Internet Explorer or Netscape Navigator. The built-in software allows you to easily check on the wireless signal level and status, and the AP Browser allows you to find which wireless networks are available.

No Drivers Needed—Works with any Ethernet-enabled device

Once the EtherBridge is configured, it can be connected to any Ethernet device. It is platform and Operating System independent, so you don't need any drivers or additional software. This allows you to take advantage of all of the functionality of your networked product by bridging it to the wireless network—making it ideal for applications such as printer and status monitoring, network scanning, and industrial control and status monitoring. Nothing needs to be changed on your Ethernet device in order to make it wireless when using the EtherBridge.

About TROY Group

TROY Group, Inc. is a worldwide provider of enterprise output solutions. The Company has three main product lines: Security Printing solutions, Financial Services solutions and Wireless and Connectivity solutions.

Security Printing solutions include high-security check printing hardware, software and consumables for security printing and payment applications. Financial Services products include ACH processing and origination software, check conversion software as well as Internet check payment software and services. Wireless and Connectivity solutions include hardware and software solutions that enable enterprises to share intelligent devices, such as printers, either wirelessly or using traditional networks. The Company distributes products to major corporations, banks, key government accounts and distributors worldwide. Visit TROY at www.troygroup.com.

*Ethernet to 802.11b
Wireless Client Bridge*

*Wireless and
Connectivity
Solutions*



Performance. Security. Quality. TROY sets the standard for wireless and connectivity solutions.



Specifications

Mechanical

Size: 7.6 x 10.2 x 2.5 cm (3 x 4 x 1 inches)

Electrical

Input Power: 800mA@5VDC (peak)

Environmental

Temperature:

- Operating temperature: -10⁰ to 65⁰ C
- Storage temperature: -30⁰ to 70⁰ C
- Maximum temperature change per hour: 20⁰ C

Altitude:

- Operating: 3.1 km
- Storage: 9.1 km

Humidity:

- Operating/Storage: 5% to 95%

Input/Output

- 1 10baseT RJ45 Ethernet
- 1 IEEE802.11b Wireless Client

Radio

- Type: Direct Sequence Spread Spectrum (DSSS)
- Frequency: 2400MHz to 2483.5MHz
- RF output power: 20dBm: +/- 2dBm
- Antenna: external dipole 2dBi
- Sensitivity: -82dBm @ 11 Mbps
- Channel:
 - America/FCC: 2.412~2.462 GHz (11 channels)
 - Europe CE/ETSI: 2.412~2.472 GHz (13 channels)
- Data rate: Auto-sensing between 1, 2, 5, and 11 Mbps

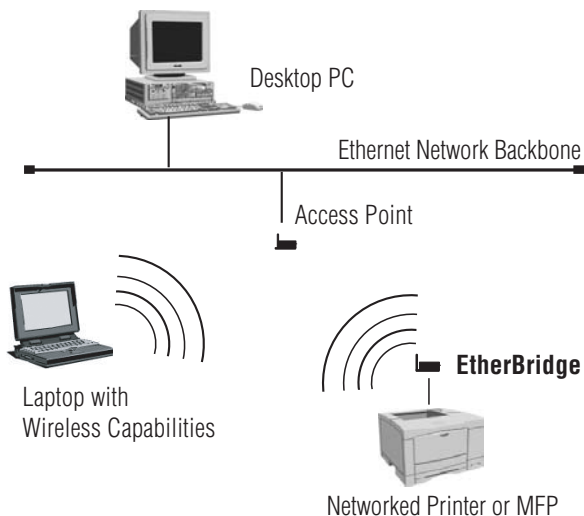
Other Features

- LED indicators for power, Ethernet activity, and Wireless activity
- Button for setting the EtherBridge to factory default settings
- EtherBridge Installation Utility for Windows
- Web browser interface for configuration from any operating system with a web browser
- Password-protected security
- Wired Equivalent Privacy encryption up to 128 bits
- Ethernet pass-through for any security provided by your networked device
- Wireless status monitor and signal level utility
- Built-in access point browser to find out which Wireless networks are available
- Firmware upgrade utility for easy wireless updates of new features

EtherBridge

- Allows printers and multi-function printers equipped with an Ethernet adapter to become a wireless 802.11b printer or multi-function Printer
- Supports existing Printer Utility Software without compromise
- Supports networked scanner facilities wirelessly
- Windows software configuration and web browser interface for easy setup
- Once configured, the EtherBridge is platform independent so it will work with any operating system and any network device
- Mounting kit included
- Not just for printers—works with any other networked device!
- Industry-leading 5-year warranty

Configuration



TROY Group, Inc.
 2331 South Pullman Street
 Santa Ana, CA 92705 USA
 Ph: 949-250-3280
 Fax: 949-250-8972
 www.troypgroup.com

TROY Group, Inc.
 1550 S. Tech Lane
 Meridian, ID 83642 USA
 Ph: 208-955-1000 or 800-251-2612
 Fax: 208-955-1001

TROY GmbH
 Schwarzwaldstr. 99
 D - 71083 Herrenberg Germany
 Ph: + 49 (0) 7032-9454-0
 Fax: + 49 (0) 7032-9459-0
 www.troypgroup.de