

Material: .002 thk white glossy polyester film with .001 thk clear thermal imprintable lamination permanent adhesive back, covered with peeled off backing.

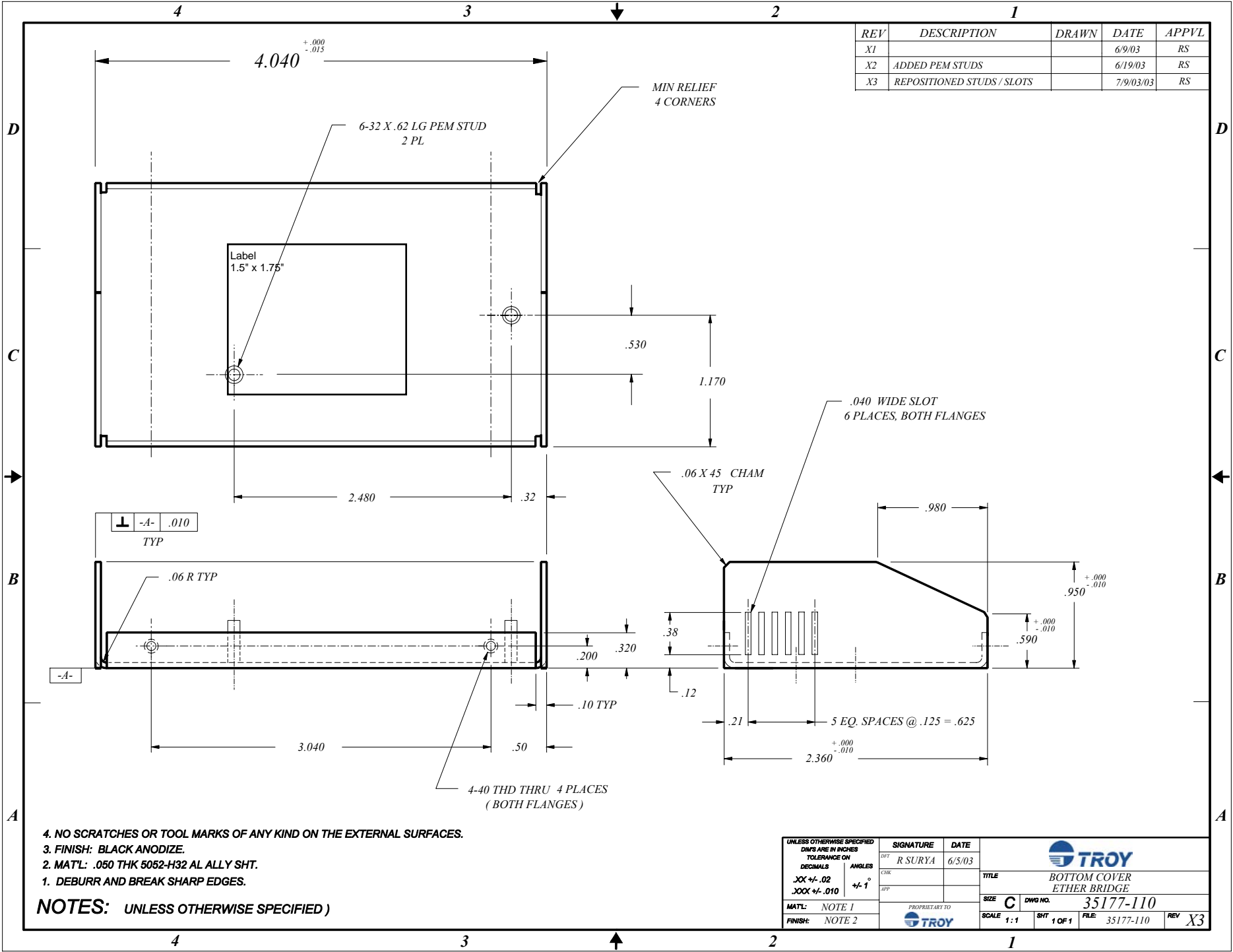
Label Size: 1.47" x 1.72" label with with .093 radius corners (fits 1.5" x 1.75" opening)



TROY EtherBridge





REV	DESCRIPTION	DRAWN	DATE	APPVL
X1			6/9/03	RS
X2	ADDED PEM STUDS		6/19/03	RS
X3	REPOSITIONED STUDS / SLOTS		7/9/03/03	RS



4. NO SCRATCHES OR TOOL MARKS OF ANY KIND ON THE EXTERNAL SURFACES.
3. FINISH: BLACK ANODIZE.
2. MATL: .050 THK 5052-H32 AL ALLY SHT.
1. DEBURR AND BREAK SHARP EDGES.

NOTES: UNLESS OTHERWISE SPECIFIED)

UNLESS OTHERWISE SPECIFIED DIM'S ARE IN INCHES TOLERANCE ON DECIMALS	SIGNATURE	DATE	 TROY
	DFT R SURYA	6/5/03	
ANGLES XX +/- .02 XXX +/- .010	CHK		TITLE BOTTOM COVER ETHER BRIDGE
MATL: NOTE 1	APP		SIZE C DWG NO. 35177-110
FINISH: NOTE 2	PROPRIETARY TO 	SCALE 1:1	SHT 1 OF 1 FILE: 35177-110 REV X3