



3600 2

5779.2

3603 1

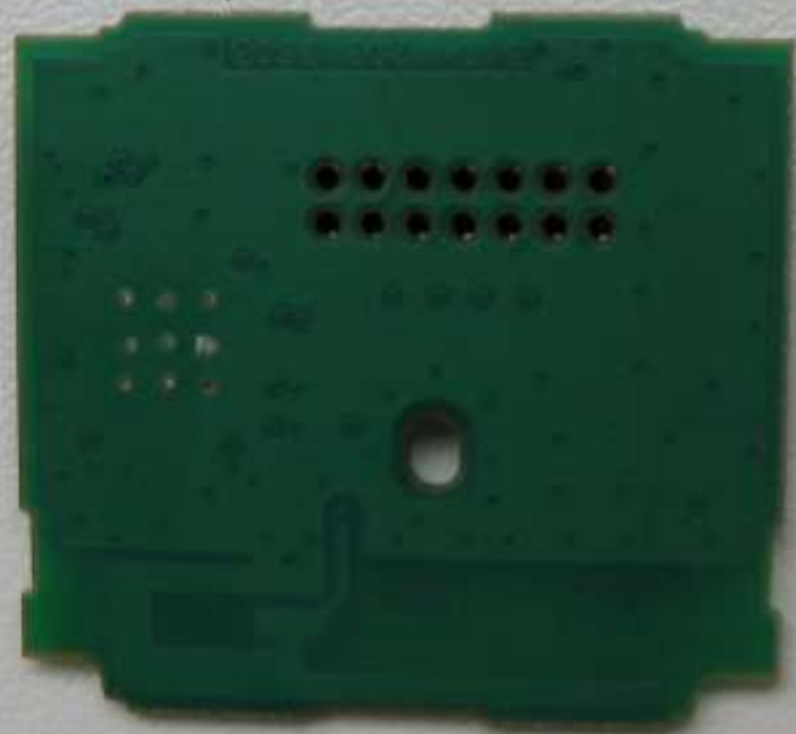
4099.2

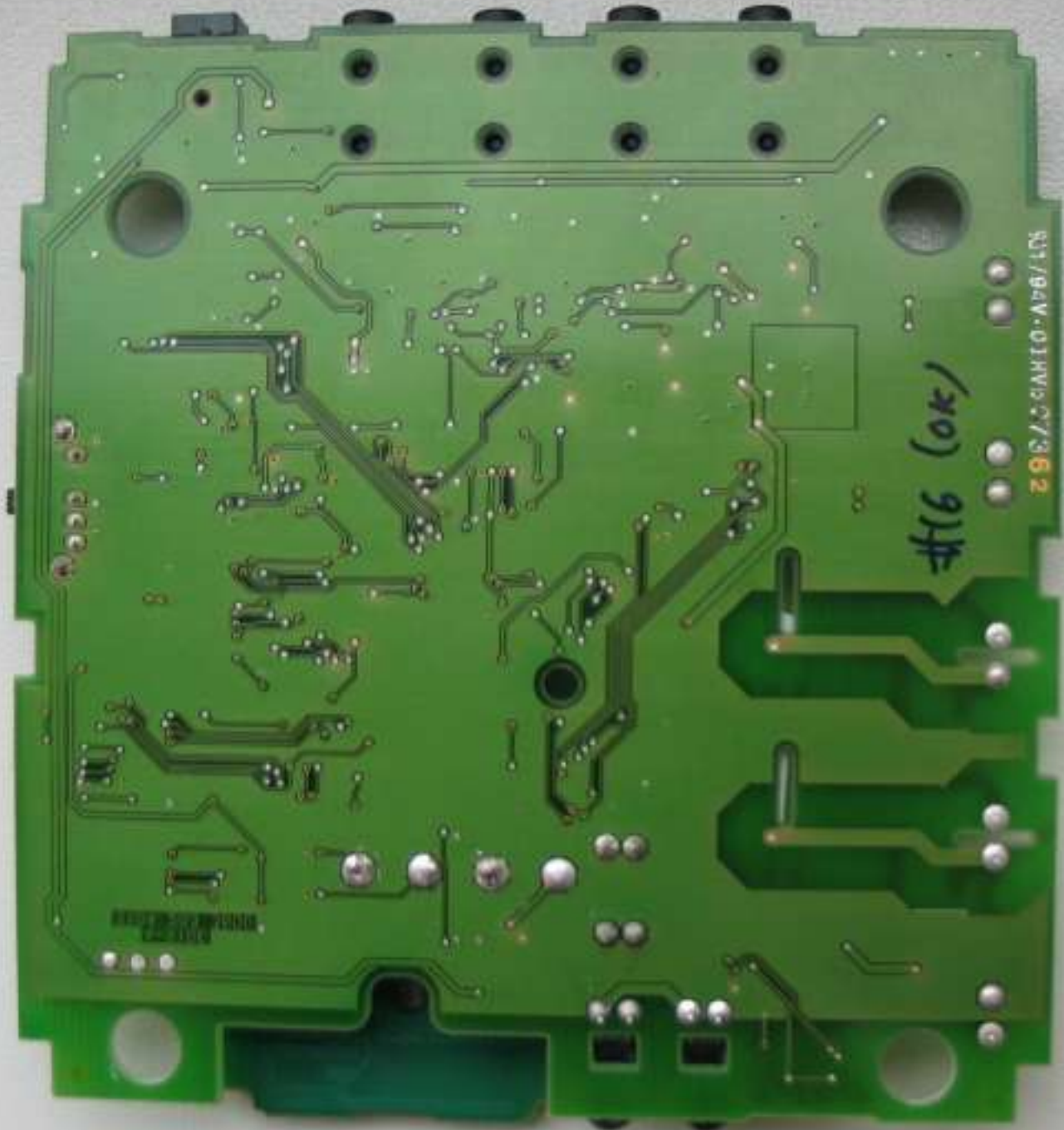


Pb

Pb

ALDO 10P-CAS





#16 (OK)

S01/94V-01HW02/362

PRINTED CIRCUIT BOARD



OK	3603	1
PL		

7101

1101

1102

F101

ELEC-1
E33203M
94V-0 001

3

720

ISSI

3600 2

7100

1105

5779.2

78

79

710F

51

50

7207

7207

6207

1