

WCS-232 V1.0 Operating Descriptions



1. Feature

WCS-232 is a Serial-to-Bluetooth Converter which allows Bluetooth communication in Serial (RS-232) environment with providing coordinator, router, and end device features.

2. Specification

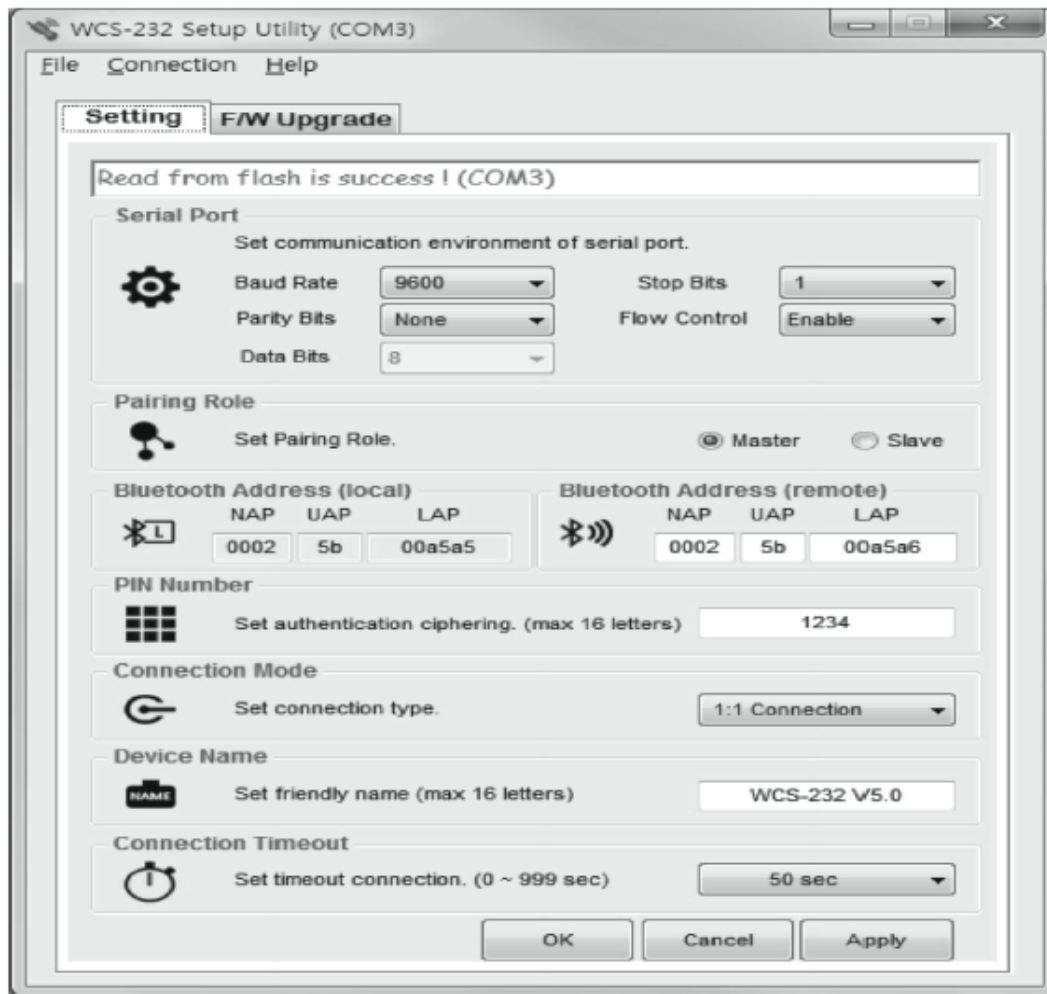
RF Section	
Standard	Bluetooth 2.1 +EDR
Modulation	GFSK(Gaussian frequency-shift keying)
Antenna	1.5 dB Stub Antenna provided
Serial Section	
Interface	RS-232
Signal used	TXD, RXD, CTS, RTS, DTR, DSR
Speed	Max. 230.4kbps
Hardware & Operating Environment	
Operation Voltage	+5 VDC
Power Consumption	Max. 0.5W
LED Information	Link, TXD, RXD
Operation Temperature	0°C ~ +55°C
Operation Humidity	5 ~ 95%, non-condensing

3. WCS-232 Operation Environment Configuration

Dedicated WCS-232 v5.0 configuration utility can be used to modify communication speed, parity, stop bit, device name, and operation mode.

■ Retrieve settings

1. Connect WCS-232 to COM port and supply power to the unit
2. Set switch in WCS-232 to Setup Mode.
3. Run WCS-232 v5.0 Setup Utility
4. From the utility, click Connection then COM Port at the top of the menu to select the port to connect.
5. When successfully completed, “Read from flash is success” message will appear.



■ Save settings

1. Click Apply button to save the settings in the device memory.
2. After it is saved, “Write to flash is success” message will appear.
3. Click on the OK button to save the settings in the device memory and close the windows.

■ Serial Port

Set serial communication configuration for SPP (Serial Port Profile).

■ Pairing Role

Select Master/Slave mode

■ Bluetooth Address

Current Bluetooth address can be checked. The target Bluetooth address can be checked and set.

■ Pin Number

When connecting to the Bluetooth device, this pin is required. Up to ASCII 16 characters can be set for a pin number.

■ Connection Mode

WCS-232 v5.0 supports “1:1 connection” and “connection waiting” modes.

In 1:1 connection mode, connection is established when the address of the Bluetooth device is entered manually.

In connection waiting mode, when target device is not specified, it will look for new devices automatically.

■ Device Name

A device name can be given here with up to 16 ASCII characters.

■ Connection Timeout

Set a given period of time until the Bluetooth device search and connects.