

# onn.

## Wireless Gaming Headset

Model: 100025012

### PRODUCT GUIDE

November 03,2020,V1

#### Federal Communication Commission Interference Statement

This equipment has been tested and found to comply with the limits for a Class B digital device, pursuant to Part 15 of the FCC Rules. These limits are designed to provide reasonable protection against harmful interference in a residential installation. This equipment generates, uses and can radiate radio frequency energy and, if not installed and used in accordance with the instructions, may cause harmful interference to radio communications. However, there is no guarantee that interference will not occur in a particular installation. If this equipment does cause harmful interference to radio or television reception, which can be determined by turning the equipment off and on, the user is encouraged to try to correct the interference by one of the following measures:

- Reorient or relocate the receiving antenna.
- Increase the separation between the equipment and receiver.
- Connect the equipment into an outlet on a circuit different from that to which the receiver is connected.
- Consult the dealer or an experienced radio/TV technician for help.

This device complies with Part 15 of the FCC Rules. Operation is subject to the following two conditions: (1) This device may not cause harmful interference, and (2) this device must accept any interference received, including interference that may cause undesired operation.

FCC Caution: Any changes or modifications not expressly approved by the party responsible for compliance could void the user's authority to operate this equipment.

#### Protect your hearing

Listening at high volume may affect your hearing, try to take a break between each session. Always remember that for any audio product, reduce the volume to the lowest before trying it with an audio source at the first time.

#### In the package

- 1 Wireless Headset
- 1 USB Receiver
- 1 USB-A to USB-C Braided Charging Cable 6 ft (1.8 m)
- 1 3.5 mm male to male audio cable 6 ft (1.8 m)
- 1 Quick Start Guide
- 1 User's Manual

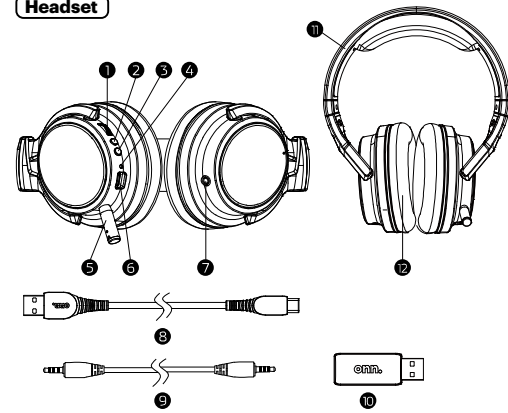
Walmart Inc.,  
Bentonville, AR 72716

Need help?  
We're here for you every day from 7 a.m. – 9 p.m. CST.  
Give us a call at 1-888-516-2630

We'd love to hear from you.  
Scan with your Walmart app and let us know what you think.



#### Headset



#### Controls and features

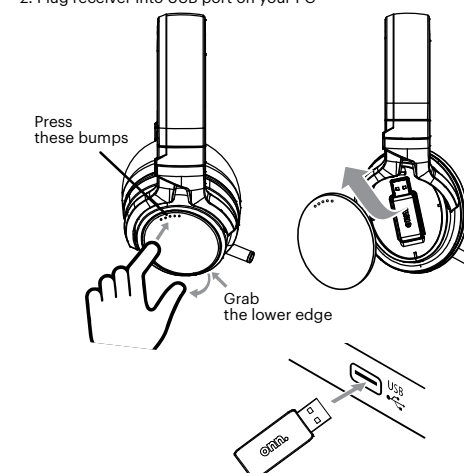
1. Volume Up / Down
2. Microphone On / Off (Pairing)
3. Power On / Off Switch
4. LED Indicator
5. Retractable Microphone
6. USB C Charging Port
7. 3.5 mm Jack for Microphone and Headphone (CTIA)
8. USB A to USB C Male Charging Cable (6 ft/1.8 m)
9. 3.5 mm Male to Male Audio Cable (6 ft/1.8 m)
10. 2.4 GHz wireless USB Receiver
11. Adjustable Headband
12. Soft Fabric Covered Earpads

#### Specification

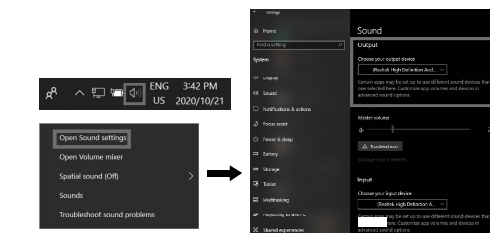
Driver Unit : 50 mm  
Driver Impedance : 32Ω +/- 15%  
Driver Sensitivity : 115 +/- 3dB (at 1k Hz)  
Driver Frequency Response : 20 Hz - 20 KHz  
Mic unit : Omnidirectional  
Mic Sensitivity : -42 +/- 3dB (at 1K Hz)  
Mic Frequency Response : 100 Hz - 10 KHz  
Connection : USB C and 3.5 mm Jack

#### Getting started

1. Open the earcup and take out receiver
2. Plug receiver into USB port on your PC



3. Turn on power switch
4. Your PC should detect and connect the headset automatically
5. Increase the input / output volume in the operating system
6. If there is no sound, go to lower right corner of your Windows desktop, notification area, right click then click "Open Sound settings" and set your headset as output device



7. If there is still no sound, try repairing your headset again, re-plug in receiver turn off and turn on headset again, LED indicator will start flashing, press power switch for pairing, LED indicator will stop flashing after pairing completed

#### Headset Operation

1. Volume wheel: Rotate up to increase volume, rotate down to decrease volume
2. Power switch: Power is on when LED indicator is on, power is off when LED indicator is off. Headset will power off automatically after 15 minutes of no audio to save battery life
3. USB C charging port: Use provided USB A to USB C charging cable to charge headset by plugging into USB port on PC, audio will also play during charging

\* Up to 12 hours of playtime at 50% volume

#### Advanced Settings

Volume is still too low (audio & mic)?  
If you have followed all steps above and successfully connected the headset but find out the volume is very low, then you will need to do some more setups

1. Turn the volume to the max including volume wheel on headset, software (application) that you are playing music with (e.g. youtube, games or music player etc.)
2. Check "Volume mixer", browser like Google also has volume control, make sure turn that to the max too

