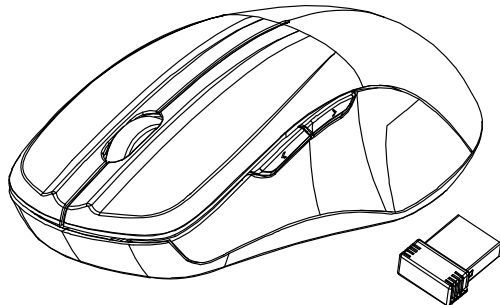


Congratulations on your purchase of a high-quality Insignia product. Your NS-WLM1451-SV represents the state of the art in wireless mouse design to ensure for reliable and trouble-free performance.

Package contents

- Five-button wireless mouse
- Nano receiver
- *Quick Setup Guide*

Before using your new product, please read these instructions to prevent any damage.



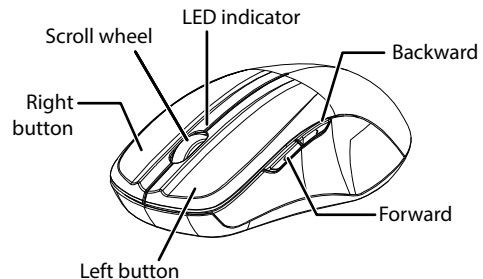
**v1
R3**

System requirements

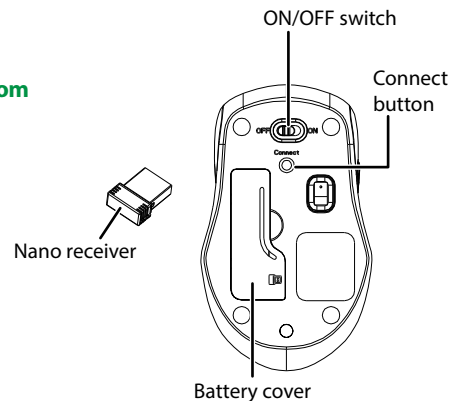
- Windows® 8, Windows® 7, Windows Vista®, Windows® XP, or Mac OS
[REVIEWERS: What is the system requirement for Mac OS? (e.g. Mac OS 10.0 or higher)?]
- One available USB port

Features

Top

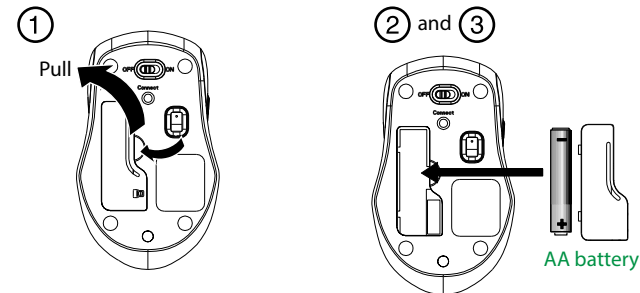


Bottom



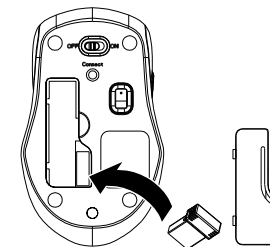
Installing the batteries

- 1 Take the battery cover off.
- 2 Insert the battery inside the battery compartment.
Note: Insert the battery with the correct orientation, according to the instruction label on the mouse.
- 3 Replace the cover.



Removing the nano receiver

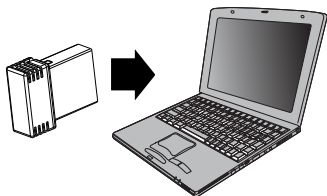
- 1 Remove the battery cover.
- 2 Pull the nano receiver out of its slot in the battery compartment.
- 3 Replace the cover.



Setting up the connection between the receiver and the mouse

1 Plug the nano receiver into a USB port on your computer.

Note: The drivers automatically install onto your computer and you can start using your mouse.



2 If the mouse does not work, put it into pairing mode by pressing the connect button on the bottom of your mouse.

Note: If the mouse does not work after 10 seconds, unplug and re-plug the nano receiver then press the connect button on the mouse again.

3 The LED indicator on the mouse flashes steadily when it is in pairing mode and turns off when it is successfully paired with the nano receiver.

4 When the battery power gets low, the battery indicator on the mouse starts to blink.

Removing the nano receiver from your computer

Windows:

1 To remove the nano receiver from your PC, right-click the USB device icon in your system tray, located on the right side of your task bar.

2 Click **Eject [device name]**. A message appears that you are now "Safe to Remove Hardware."

3 Remove the receiver from your computer.

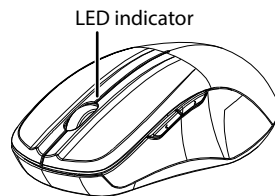
Mac OS:

1 Click the **Finder** icon on your dock. The *Finder* window opens.

2 In the left panel, select **[device name]** under the "DEVICES" heading, then click **▲** (eject). "[device name]" disappears and the USB device can be safely removed from your computer.

[REVIEWERS: What will show up as the device name in the finder window or systems tray?]

Mouse indicator



Power ON	LED is on for 3 sec.
Low battery warning	LED blinks for 10 sec.
Pairing	LED blinks 3 times.
When paired or failed after 10 sec.	LED is off.

Specifications

Rating: 3V C.C. - 10mA

Cleaning your mouse

- Wipe the mouse with a damp, lint-free cloth.

Troubleshooting

- Make sure that your computer meets the system requirements.
- Only use the mouse on a clean, flat, non-slippery surface to ensure smooth and accurate cursor action.
- If your mouse stops working:
 - Make sure that your mouse and nano receiver are paired by pressing the connect button on the mouse.
 - Replace the mouse battery.
- Avoid using your mouse on reflective, transparent, or metallic surfaces.

Legal notices

FCC Statement

This device complies with Part 15 of the FCC Rules. Operation is subject to the following two conditions: (1) this device may not cause harmful interference, and (2) this device must accept any interference received, including interference that may cause undesired operation.

This equipment has been tested and found to comply with the limits for a Class B digital device, pursuant to Part 15 of the FCC Rules. These limits are designed to provide reasonable protection against harmful interference in a residential installation. This equipment generates, uses and can radiate radio frequency energy and, if not installed and used in accordance with the instructions, may cause harmful interference to radio communications. However, there is no guarantee that

interference will not occur in a particular installation. If this equipment does cause harmful interference to radio or television reception, which can be determined by turning the equipment off and on, the user is encouraged to try to correct the interference by one or more of the following measures:

- Reorient or relocate the receiving antenna.
- Increase the separation between the equipment and receiver.
- Connect the equipment into an outlet on a circuit different from that to which the receiver is connected.
- Consult the dealer or an experienced radio/TV technician for help.

Warning: Changes or modifications not expressly approved by the party responsible for compliance could void the user's authority to operate the equipment.

RSS-Gen and RSS-210 statement

This device complies with Industry Canada license-exempt RSS standard(s).

Operation is subject to the following two conditions: (1) this device may not cause interference, and (2) this device must accept any interference, including interference that may cause undesired operation of the device.

Le présent appareil est conforme aux CNR d'Industrie Canada applicables aux appareils radio exempts de licence. L'exploitation est autorisée aux deux conditions suivantes : (1) l'appareil ne doit pas produire de brouillage, et (2) l'utilisateur de l'appareil doit accepter tout brouillage radioélectrique subi, même si le brouillage est susceptible d'en compromettre le fonctionnement.

RSS-102 statement

This equipment complies with Industry Canada radiation exposure limits set forth for an uncontrolled environment.

Cet équipement est conforme à l'exposition aux rayonnements Industry Canada limites établies pour un environnement non contrôlé.

One-year limited warranty

For complete warranty, visit www.insigniaproducts.com.

Contact Insignia

For customer service, call 1-877-467-4289 (U.S. and Canada)

or 01-800-926-3000 (Mexico)

www.insigniaproducts.com

INSIGNIA is a registered trademark of BBY Solutions, Inc. Registered in some countries.

Distributed by Best Buy Purchasing, LLC, 7601 Penn Ave South, Richfield, MN 55423 U.S.A.

©2013 BBY Solutions, Inc. All Rights Reserved.