

**Wireless
Stow-N-Go™
Notebook Mouse**



Targus®

USER GUIDE

WIRELESS OPTICAL STOW-N-GO™ NOTEBOOK MOUSE

Introduction

Congratulations on your purchase of the Wireless Optical Stow-N-Go™ Notebook Mouse. This mouse features a tracking resolution switch for users who require more precision or speed with various applications. The Stow-N-Go receiver clips onto the mouse for ease of use while traveling or on the go. This mouse also features a 4-way scrolling tilt-wheel which allows for both vertical and horizontal navigation.

System Requirements

Hardware

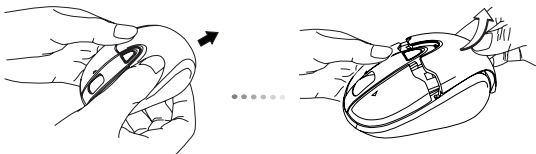
- USB port

Operating System

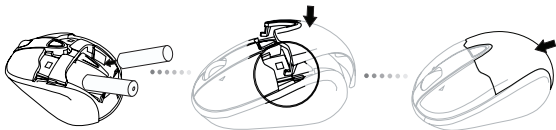
- Windows® 2000
- Windows® XP
- Windows Vista®
- Mac OS® X 10.4 (or greater)

Installing the Batteries

1. Remove the battery cover from the back of the mouse by sliding off the cover of the mouse. Hold the mouse in your hands and with the back of the mouse away from you. Press down on the corners of the battery cover and slide towards the back of the mouse. Lift the cover off from the back of the mouse.



2. Insert two AA-size batteries, making sure that the positive (+) and negative (-) ends of each battery match the polarity indicators inside the battery compartment. To replace the battery cover, place the cover on top of the mouse and slide forward until it clicks into place.



NOTE: WHEN THE BATTERY IS LOW, THE LOW POWER INDICATOR LIGHT LOCATED IN THE DPI SWITCHING BUTTON WILL FLASH RED. PLEASE REPLACE WITH TWO NEW AA-SIZE BATTERIES.



DPI switching
button

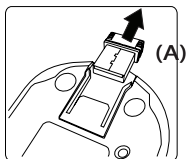
When power is on, the mouse goes into “sleep mode” after 8 minutes of inactivity. To activate the mouse, press any mouse key.

Establishing the Connection

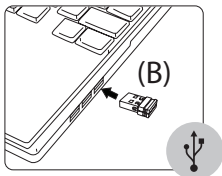
- (A) Remove the USB receiver from the bottom of the mouse. This will activate the on/off switch.



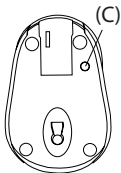
NOTE: TO TURN THE MOUSE OFF, SIMPLY PLACE THE USB RECEIVER BACK INTO THE STORAGE SLOT. THIS WILL MAXIMIZE BATTERY LIFE WHEN NOT IN USE.



- (B) Plug the USB receiver into an available USB port on your computer.



- (C) Press the setup key on the bottom of the mouse.



Installing the tilt-wheel software driver

This mouse is equipped with a 4-way scrolling function. To enable the tilt-wheel function, the software driver must be installed.



NOTE: THE TILT-WHEEL FEATURE IS SUPPORTED BY THE MAC OPERATING SYSTEM. NO DRIVER INSTALLATION IS NECESSARY. THE FOLLOWING STEPS ARE FOR WINDOWS OPERATING SYSTEMS ONLY.

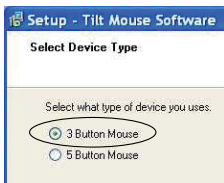
1. Please download the software driver (Model # AMW52) from the official Targus web site: <http://www.targus.com> Save the setup.exe file to your computer and double click on the icon to launch the installation process.



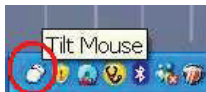
2. The Installation Wizard window will prompt. Follow the on-screen instructions to complete the installation.



NOTE: PLEASE SELECT THE "3 BUTTON MOUSE" OPTION WHEN PROMPTED TO DO SO.

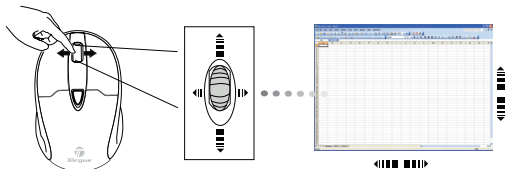


After the software driver is successfully installed, there will be a "Tilt Mouse" icon located in the task bar.



Using the 4-way scrolling tilt-wheel

Pressing the scroll-wheel left or right, enables the horizontal scrolling feature.



NOTE: DOUBLE CLICK ON THE "TILT MOUSE" ICON IN THE TASK BAR WILL LAUNCH THE MOUSE SETTINGS SCREEN. YOU CAN EDIT THE SETTINGS AND PREFERENCES IN THIS WINDOW.

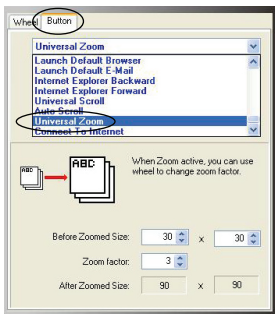


Activating the Universal Zoom function

The **Universal Zoom** function can be enabled in the **Mouse Setting** screen.

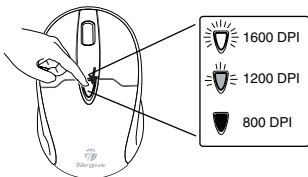
In the **Mouse Setting** screen, under the **Button** tab, scroll down the function list and select the **Universal Zoom** function then click .

Press on the scroll wheel to activate the zoom function.



Adjusting the DPI Setting

This mouse features 3 selectable resolution settings (1600 / 1200 / 800 DPI). By pressing the resolution switch, you can instantly adjust the tracking speed of the mouse. When the DPI is set at 1600, the indicator light will glow brightest and when it is set at 1200, the light will become dimmer. The indicator will be off when the DPI is set at 800 DPI. The setting will be saved when the mouse is turned off. The indicator light will shut off in 10 seconds after selecting the desired resolution.

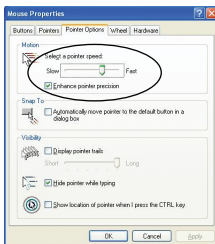


Windows XP:

After selecting the desired resolution, you can also fine tune the sensitivity. This can be adjusted in the “control panel” of the Windows operating system.

Click on Start --> Setting --> Control Panel --> Mouse

In the “mouse properties” window, locate the “pointer options” tab. Under “motion”, use the slider to change the speed of the mouse. Click apply to confirm the changes.



Windows XP

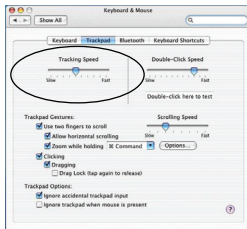
Mac OS:

After selecting the desired resolution, you can also fine tune the sensitivity. This can be adjusted in the “System Preference” of the Mac operating system.

Click on the Apple logo --> System Preference --> Keyboard & Mouse

In the “Keyboard & Mouse” window, locate the “Trackpad” tab.

Under “tracking speed”, use the slider to change the speed of the mouse.



Mac OS

Product Specification

Transmitter

RF	2.402GHz-2.482GHz
Battery Type	Alkaline battery AA
Effective RF Communication Range	10 meters max
RF output power	1.6 mW max
Power Consumption	9.34 mA max

Receiver

RF	2.402GHz-2.482GHz
Interface	USB 1.1
Power	USB Bus Powered 5V DC

Technical Support

For technical questions, please visit:

US

Australia

New Zealand

Internet: www.targus.com/support.asp

Internet: www.targus.com/au

Email: infoaust@targus.com

Telephone: 1800-641-645

Telephone: 0800-633-222

Product Registration

Targus recommends that you register your Targus accessory shortly after purchasing it. Go to:

<http://www.targus.com/registration.asp>.

You will need to provide your full name, email address, country of residence and product information.

Warranty

Targus warrants this product to be free from defects in materials and workmanship for one year. If your Targus accessory is found to be defective within that time, we will promptly repair or replace it. This warranty does not cover accidental damage, wear and tear, or consequential or incidental loss. Under no conditions is Targus liable for loss of, or damage to devices; nor loss of, or damage to, programs, records, or data; nor any consequential or incidental damages, even if Targus has been informed of their possibility. This warranty does not affect your statutory rights.

Regulatory Compliance

This device complies with Part 15 of the FCC Rules. Operation is subject to the following two conditions: (1) This device may not cause harmful interference, and (2) This device must accept any interference received, including interference that may cause undesired operation.

FCC Statement Tested to Comply

This equipment has been tested and found to comply with the limits of a Class B digital device, pursuant to Part 15 of the FCC Rules. These limits are designed to provide reasonable protection against harmful interference in a residential installation. This equipment generates, uses, and can radiate radio frequency energy and if not installed and used in accordance with the instructions, may cause harmful interference to radio communications. However, there is no guarantee that interference will not occur in a particular installation. If this equipment does cause harmful interference to radio or television reception, which can be determined by turning the equipment off and on, the user is encouraged to try to correct the interference by one or more of the following measures:

- Reorient or relocate the receiving antenna;
- Increase the separation between the equipment and receiver;
- Connect the equipment into an outlet on a circuit different from that to which the receiver is connected;
- Consult the dealer or an experienced radio/TV technician for help.

Changes or modifications not authorized by the party responsible for compliance could void the user's authority to operate this product.

Declaration of Conformity

Hereby, Targus, declares that this device is in compliance with the essential requirements and other relevant provisions of Directive 1999/5/EC.

Microsoft, Windows, and Windows Vista are either registered trademarks or trademarks of Microsoft Corporation in the United States and/or other countries. All trademarks and registered trademarks are the property of their respective owners. All rights reserved. Features and specifications are subject to change without notice. © 2009. Targus Group International, Inc. and Targus, Inc., Anaheim, CA 92806 USA



Targus®

Visit our website at www.targus.com

Features and specifications are subject to change without notice.

© 2009 Targus Group International, Inc. and Targus, Inc.

AMW52US / 410-1673-001A

