

**Wireless
Stow-N-Go™
Laptop Mouse**



Targus®

USER GUIDE

Wireless Stow-N-Go™ Laptop Mouse

Introduction

Congratulations on your purchase of the Targus Wireless Stow-N-Go™ Laptop Mouse. The Stow-N-Go™ receiver clips onto the mouse for ease of use while traveling or on the go. This is a plug and play device so no additional software is required.

System Requirements

Hardware

- USB port

Operating System

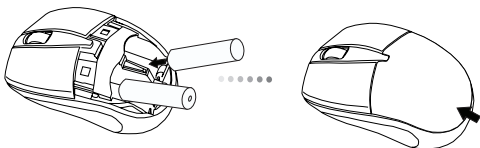
- Windows® 2000
- Windows® XP
- Windows Vista®
- Mac OS® X v10.4 or later

Installing the Batteries

1. Remove the battery cover from the back of the mouse by sliding off the cover of the mouse. Hold the mouse in your hands and with the back of the mouse away from you. Press down on the corners of the battery cover and slide towards the back of the mouse. Lift the cover off from the back of the mouse.

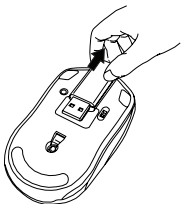


2. Insert two AA-size batteries, making sure that the positive (+) and negative (-) ends of each battery match the polarity indicators inside the battery compartment. To replace the battery cover, place the cover on top of the mouse and slide forward until it clicks into place.



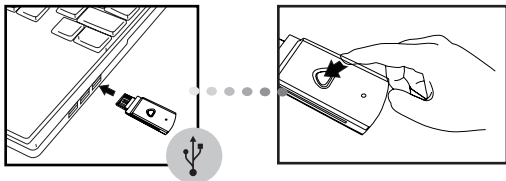
Establishing the Connection

- (A) Remove the USB receiver from the bottom of the mouse.

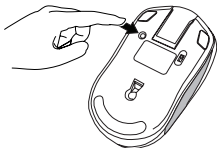


- (B) Plug the USB receiver into an available USB port on your computer.

- (C) Press and release the setup key on the receiver.



- (D) Press the setup key on the bottom of the mouse.



This device has 256 identification codes that allow the mouse and its receiver to operate without interference from other radio frequency devices. If you experience interference during use, repeat steps C and D to change the connection channel.

Product Specification

Transmitter

RF	2405MHz-2477MHz
Battery Type	Alkaline battery AA
Effective RF Communication Range	10 meters max
RF output power	94.47dBuV/m

Receiver

RF	2405MHz-2477MHz
Interface	USB 1.1
Power	USB Bus Powered 5V DC

Regulatory Compliance

This device complies with Part 15 of the FCC Rules. Operation is subject to the following two conditions: (1) This device may not cause harmful interference, and (2) This device must accept any interference received, including interference that may cause undesired operation.

This device and its antenna(s) must not be co-located or operating in conjunction with any other antenna or transmitter.

Changes or modifications not authorized by the party responsible for compliance could void the user's authority to operate this product.

Declaration of Conformity

Hereby, Targus Group International, declares that this device is in compliance with the essential requirements and other relevant provisions of Directive 1999/5/EC.

Microsoft, Windows, and Windows Vista are either registered trademarks or trademarks of Microsoft Corporation in the United States and/or other countries. All trademarks and registered trademarks are the properties of their respective owners. All rights reserved.