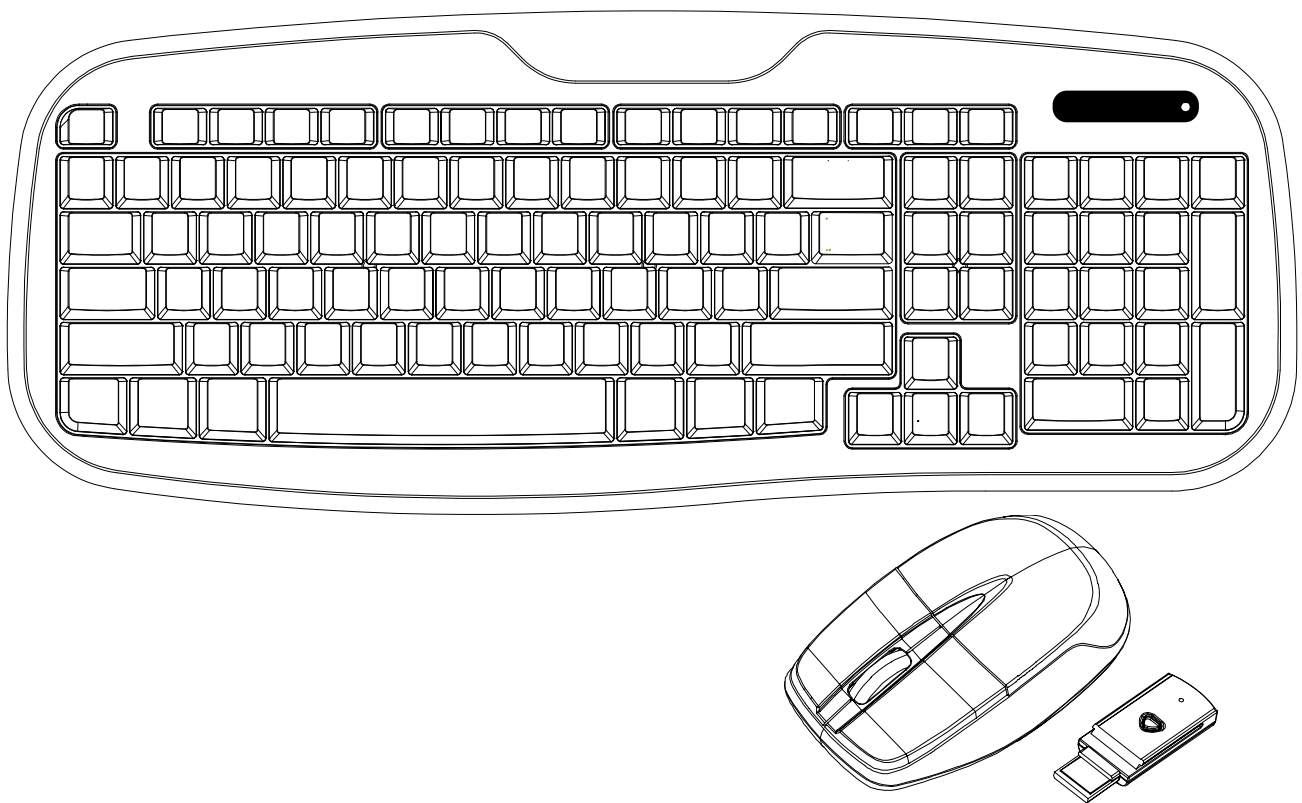


# 2.4G Standard Keyboard & Mouse

## *USER'S GUIDE*

Ver.:1.00



CAUTION: To use this product properly, please read the user's guide before installation

## **Federal Communication Commission Interference Statement**

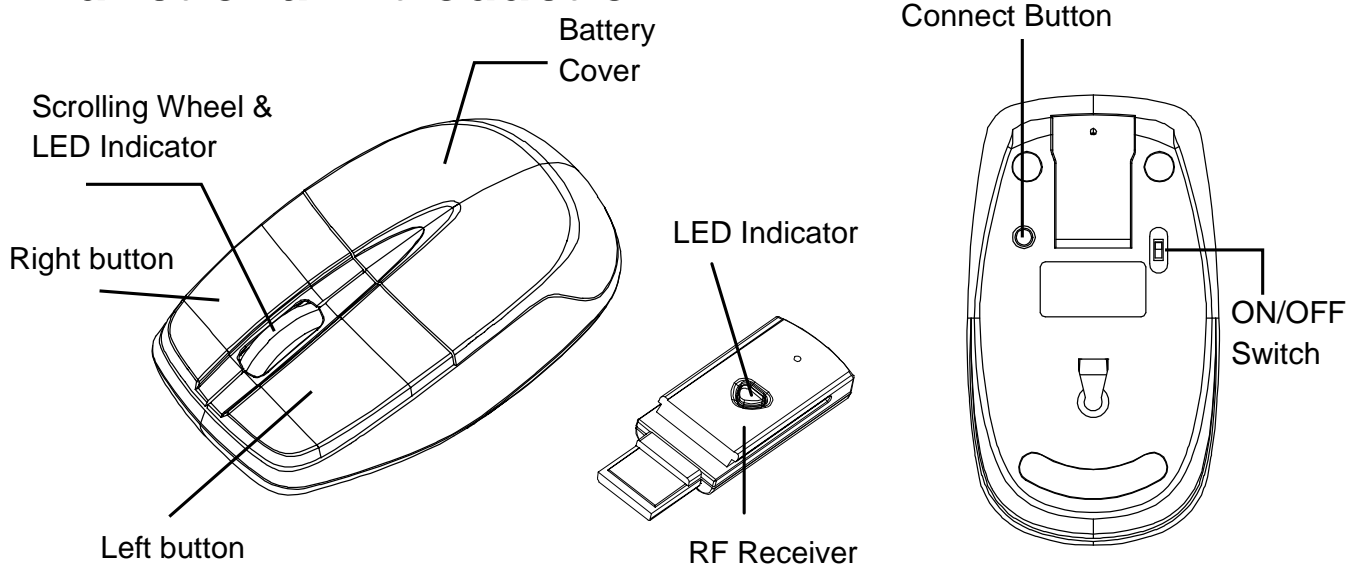
This equipment has been tested and found to comply with the limits for a Class B digital device, pursuant to Part 15 of the FCC Rules. These limits are designed to provide reasonable protection against harmful interference in a residential installation. This equipment generates, uses and can radiate radio frequency energy and, if not installed and used in accordance with the instructions, may cause harmful interference to radio communications. However, there is no guarantee that interference will not occur in a particular installation. If this equipment does cause harmful interference to radio or television reception, which can be determined by turning the equipment off and on, the user is encouraged to try to correct the interference by one of the following measures:

- Reorient or relocate the receiving antenna.
- Increase the separation between the equipment and receiver.
- Connect the equipment into an outlet on a circuit different from that to which the receiver is connected.
- Consult the dealer or an experienced radio/TV technician for help.

FCC Caution: Any changes or modifications not expressly approved by the party responsible for compliance could void the user's authority to operate this equipment.

This device complies with Part 15 of the FCC Rules. Operation is subject to the following two conditions: (1) This device may not cause harmful interference, and (2) this device must accept any interference received, including interference that may cause undesired operation.

# Functional Introduction



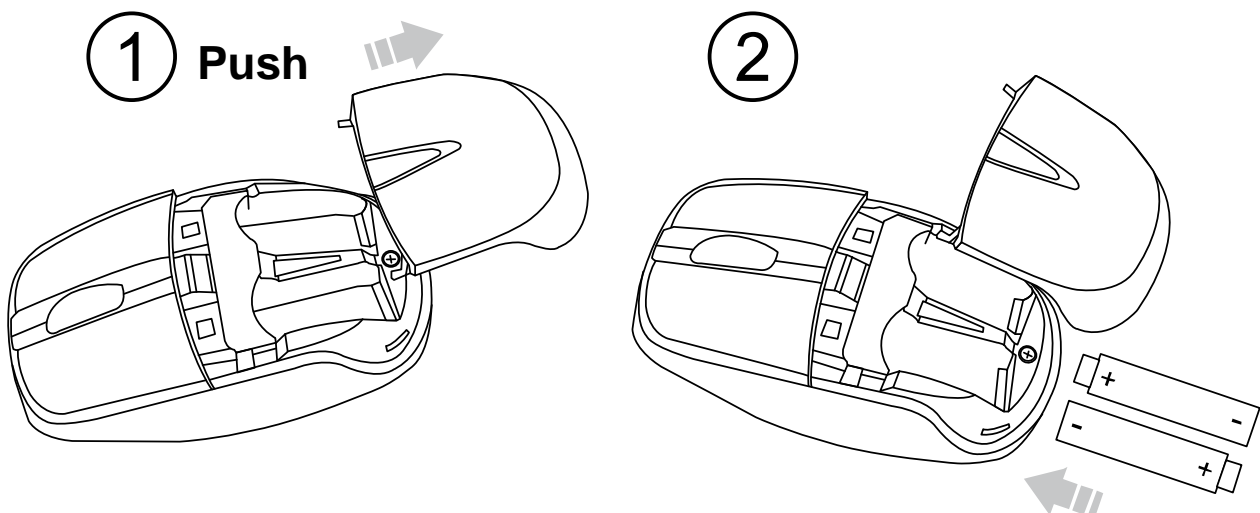
## Battery and Power Management:

### Installing the batteries

**Step 1:** Pull the battery cover backward.

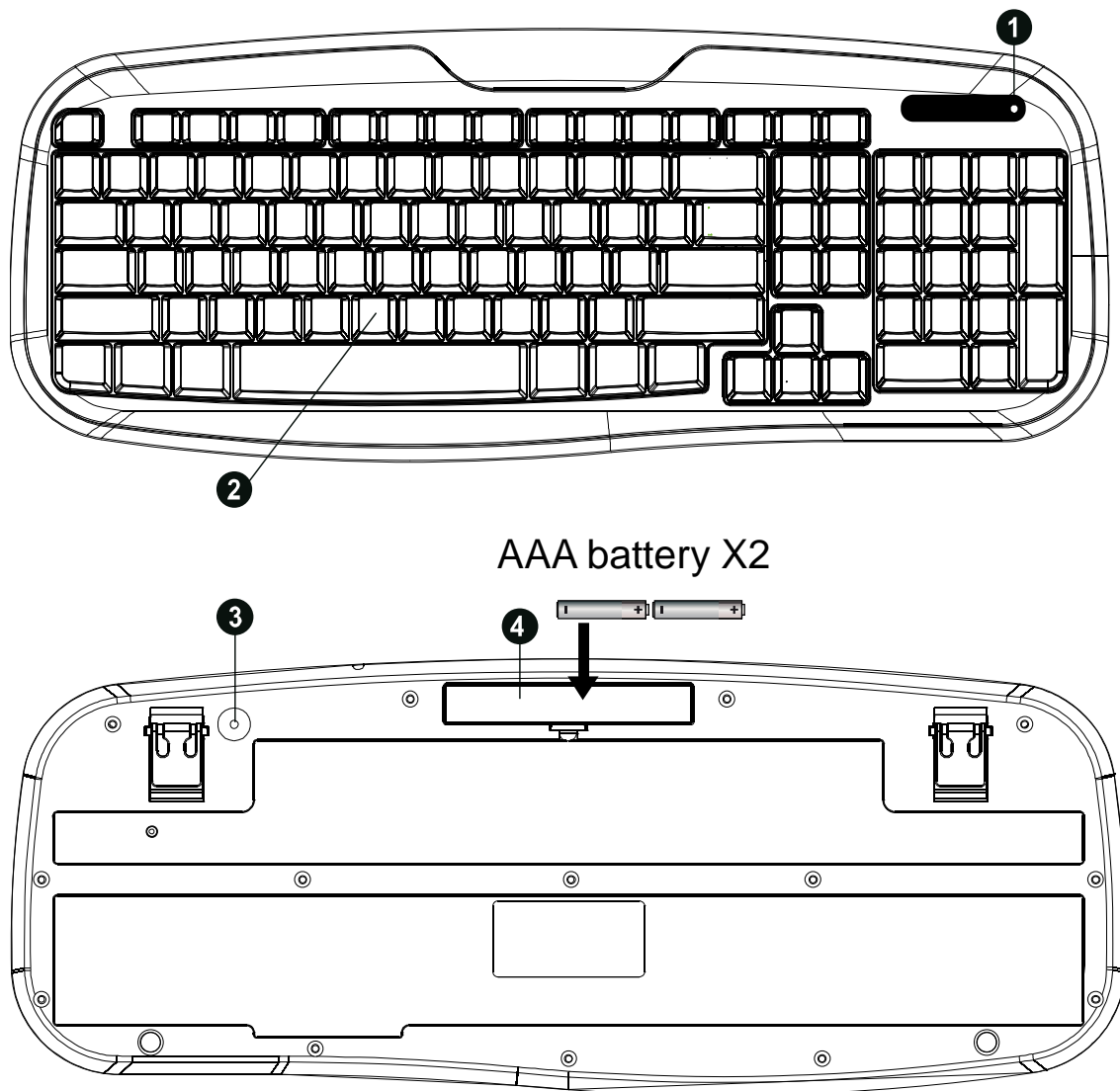
**Step 2:** Insert the batteries as shown inside the battery compartment.

**Step 3:** Replace the cover.



For Extra usage hours, use two AA batteries instead of two AAA Batteries.

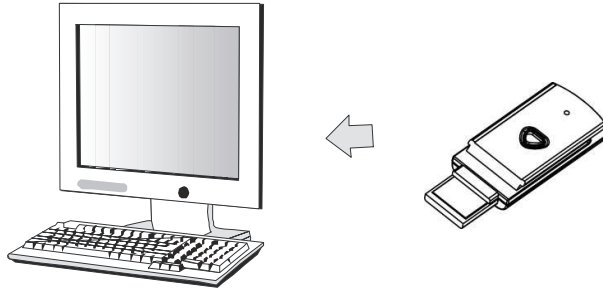
## Keyboard Buttons



1.	LED Indicator	Low Battery & Pairing Indicator
2.	103 standard-Keys	
3.	<b>Connect Button</b>	
4.	Battery Cover	

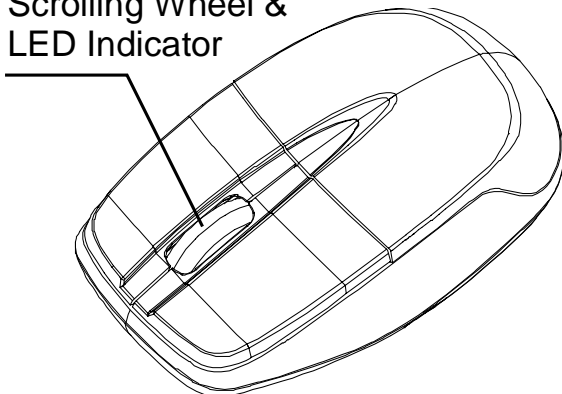
## Setup the Connection between the Receiver and the Mouse, Keyboard.

1. Plug the RF receiver into the USB port of your computer.



2. Insert the batteries into the mouse and keyboard, then follow the steps below.
3. If the mouse or the keyboard is not working, please put them into pair mode.
4. Pairing: Re-plug the receiver into the USB port of your computer, then press connect button of the mouse and keyboard. If the mouse or keyboard does not work after 10 seconds, pair them again. (The receiver has auto pairing function).
5. The LED indicators on receiver flashes when the mouse is moving or when the keyboard is in use.
6. When the battery of the keyboard is low, the Low Power indicator would blink.

Scrolling Wheel &  
LED Indicator



### \*Mouse Indicator

Red LED is on for 10 sec.

Power ON

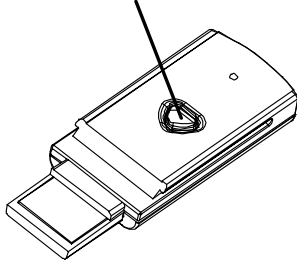


### Red LED Blinking

Pairing (LED OFF when paired or failed after 10 sec.)



LED Indicator



### \*Receiver Indicator



**Green LED is on for 3 sec.**  
Power ON



**Green LED Blinking**  
(If any action)

### \*Keyboard Indicator



**Red LED is on for 10 sec.**  
Power ON



**Red LED Blinks for 10 sec.**  
Low Battery Warning



**Red LED Blinking**  
Pairing (LED OFF when paired or  
failed after 10 sec.)

LED Indicator

