

onn.

Ergonomic Wireless Mouse with Bluetooth

Model: 100012594

PRODUCT GUIDE

December 10, 2019_V1

正面

Federal Communication Commission

Interference Statement

This equipment has been tested and found to comply with the limits for a Class B digital device, pursuant to Part 15 of the FCC Rules. These limits are designed to provide reasonable protection against harmful interference in a residential installation. This equipment generates, uses and can radiate radio frequency energy and, if not installed and used in accordance with the instructions, may cause harmful interference to radio communications. However, there is no guarantee that interference will not occur in a particular installation. If this equipment does cause harmful interference to radio or television reception, which can be determined by turning the equipment off and on, the user is encouraged to try to correct the interference by one of the following measures:

- Reorient or relocate the receiving antenna.
- Increase the separation between the equipment and receiver.
- Connect the equipment into an outlet on a circuit different from that to which the receiver is connected.
- Consult the dealer or an experienced radio/TV technician for help.

This device complies with Part 15 of the FCC Rules. Operation is subject to the following two conditions: (1) This device may not cause harmful interference, and (2) this device must accept any interference received, including interference that may cause undesired operation.

Radiation Exposure Statement:

The product complies with the FCC portable RF exposure limit set forth for an uncontrolled environment and are safe for intended operation as described in this manual. The further RF exposure reduction can be achieved if the product can be kept as far as possible from the user body or set the device to lower output power if such function is available.

FCC Caution: Any changes or modifications not expressly approved by the party responsible for compliance could void the user's authority to operate this equipment.

Before Use

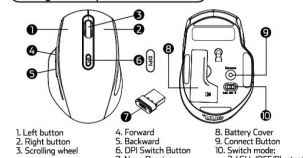
Notes: All parts have to be unpacked and the packaging material has to be removed completely. Before use, verify the package contents are complete and undamaged.

BATTERY WARNING STATEMENT

Do not mix old and new batteries. Do not mix alkaline, standard (carbon-zinc), or rechargeable (ni-cad, ni-mh, etc.) batteries.

Walmart Inc., Bentonville, AR 72716

Getting to know your bluetooth mouse



- 1. Left button
2. Right button
3. Scrolling wheel
4. Forward
5. Backward
6. DPI Switch Button
7. Nano Receiver
8. Battery Cover
9. Connect Button
10. Switch mode

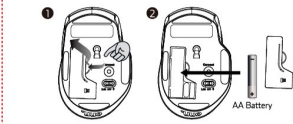
Forward: Press this button to view the next page in your Internet browser. Backward: Press this button to view the previous page in your Internet browser. DPI Switch Key: 5 adjustable DPI settings. The number of blinks indicates the DPI setting in use.

Table with 2 columns: DPI, # of blinks. Rows: 600 dpi (1 blink), 1200 dpi (2 blinks), 1800 dpi (3 blinks), 2400 dpi (4 blinks), 3600 dpi (5 blinks).

Technical Data: Operation voltage 1.5V, Operating Systems: 2.4GHz - Microsoft Windows 7/8/10, Mac OS 10.5 or newer version, Bluetooth - Microsoft Windows 10, Mac OS 10.10 or newer version, 5 adjustable sensitivity levels: 600/1000/1600/2400/3600, USB plug and play, Working distance: 8-10 meter in open space, Battery life 4-5 month (Battery life may vary depending on user and computing conditions). To prolong battery life, turn off when not in use.

Installing the batteries

Insert the battery with the correct position according to the instruction labeled on the mouse.

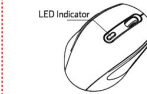


Instruction-2.4GHz mode

Plug USB connector into USB port on your computer

Help with set up under 2.4GHz mode

- When not working, pair mouse and receiver
1. Re-plug receiver into USB port on computer
2. Press the connect button on mouse (keep mouse close to receiver)
3. If it does not work after 10 seconds, repeat steps 1 and 2.



- Green LED is on for 10 Sec. Power On
Green LED Blinking for 10 Sec. Low Battery Warning
Green LED Blinking Pairing (LED OFF when paired or failed after 10 sec.)

Need help? We're here for you every day from 7 a.m. - 9 p.m. CST. Give us a call at 1-888-516-2630

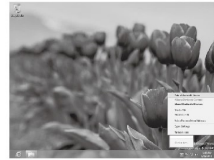
We'd love to hear from you. Scan with your Walmart app and let us know what you think.



反面

Instruction - Bluetooth mode

- Windows OS 10 or up
1. Press the "Windows" button to go into Computer.
2. Click the Bluetooth icon on the task bar and then click "Add a Bluetooth Device".



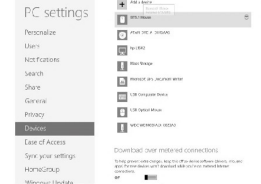
3. Go into PC Setting.



- 4. Press the CONNECT button on mouse.
5. Click "Add a device" then select "BT(S) Mouse".

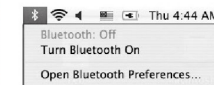


6. Selected setting will show paired or connected when pairing is successful.

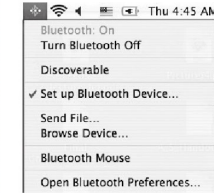


MAC OS 10.10 or up

- 1. Click Bluetooth icon on your desktop or in the system bar, then select "Turn Bluetooth On".



- 2. Select "Set up Bluetooth device".



- 3. The "Bluetooth Setup Assistant tab" will appear. Please follow the instructions and click "continue".
4. Select "Mouse" then click "continue", press the "connect" button on mouse.

5. Select specific mouse then press "continue".



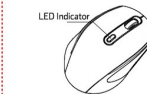
- 6. The computer is pairing with mouse. Press "continue".
7. Your Bluetooth mouse is setup click "Quit" to exit the tab.



Help with set up under Bluetooth mode

When not working, repair by following previous steps

The Bluetooth mouse can work in 5.1 Bluetooth environment. Before connecting your Bluetooth mouse with your computer, make sure your computer has a working Bluetooth configuration with Human Interface Device (HID) profile. If your computer does not support Bluetooth 5.1, you need to obtain and install a commercially available Bluetooth dongle which converts your computer to a Bluetooth environment.



- Green LED is on for 10 Sec. Power On
Green LED Blinking for 10 Sec. Low Battery Warning
Green LED Blinking Pairing (LED OFF when paired or failed after 10 min.)

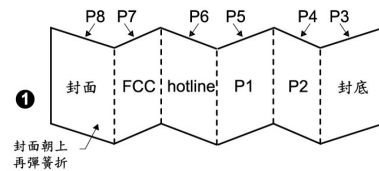
折線

折線

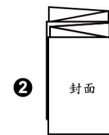
折線

折線

折線



封面朝上再彈簧折



說明書折合成完成

Project Name: 100012594(B1Z_Ergonomic Wireless Mouse with Bluetooth) for Walmart USA-ONN Manual_Outline_20200414.ai

REV. A 印刷順序: 印單色, *雙面印刷再彈簧折

DATE: 2020.04.14 紙質: 雙交紙, 70磅

比例1:1 尺寸:

PROCESS COLORS

