



Wireless Bluetooth Mouse

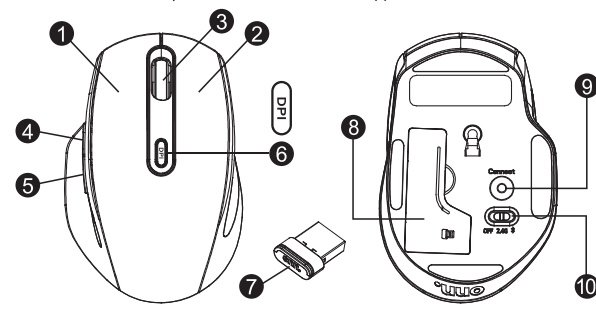
Model: 100012594

PRODUCT GUIDE

October 25, 2019_V1

System Requirements

- USB Port: Windows 7, Windows 8 or up, Mac OS X 10.8 or up.
- Bluetooth Smart: Windows 8 or up, Mac OS X 10.10 or up.
- Support Android device 4.4v or up, Windows device with Bluetooth 4.0(LE) or up.
- Note mouse connectivity thru Bluetooth varies on supported Android device version.



1. Left button
2. Right button
3. Scrolling Wheel
4. Forward
5. Backward
6. DPI Switch Key
7. Nano Receiver
8. Battery Cover
9. Connect Button
10. Switch mode: OFF/2.4GHz/Bluetooth

Forward
Press this button to view the next page in your internet browser.

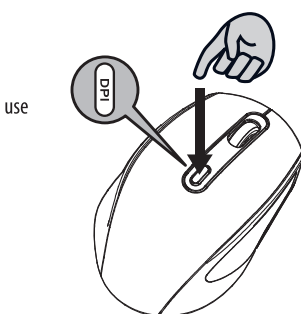
Backward
Press this button to view the previous page in your internet browser.

DPI Switch Key (Five different DPI)

a) 5 adjustable DPI
The blink on key indicates the DPI setting in use

DPI	Blink
600 dpi	1
1000 dpi	2
1200 dpi	3
2400 dpi	4
3600 dpi	5

b) Default is 1600 DPI

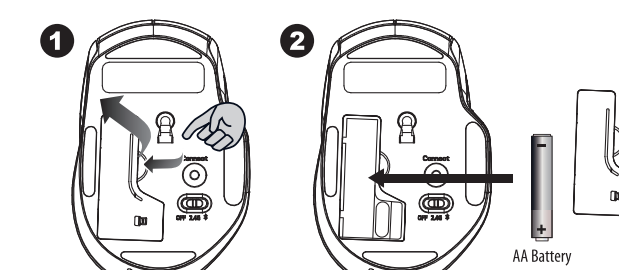


- 1 -

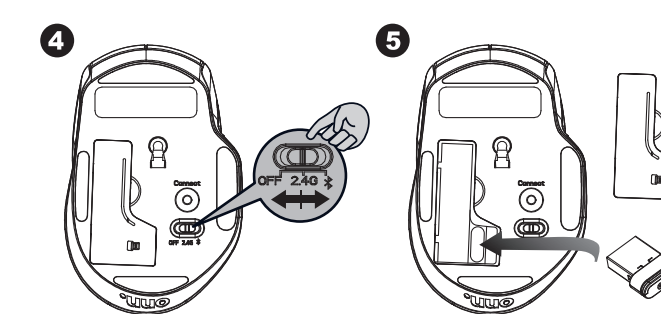
October 25, 2019_V1

SETUP 2.4GHz WIRELESS MOUSE

- Step 1:** Take off the battery cover off.
- Step 2:** Insert the batteries as shown inside the battery storage.
- Step 3:** Replace the battery cover.



- Step 4:** Switch ON to 2.4GHz mode.
- Step 5:** Insert the NANO RECEIVER into your computer.
- Step 6:** Your mouse will connect automatically, letting you use your mouse wirelessly.



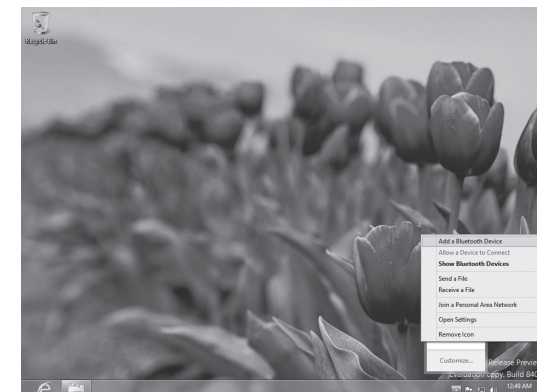
- 2 -

October 25, 2019_V1

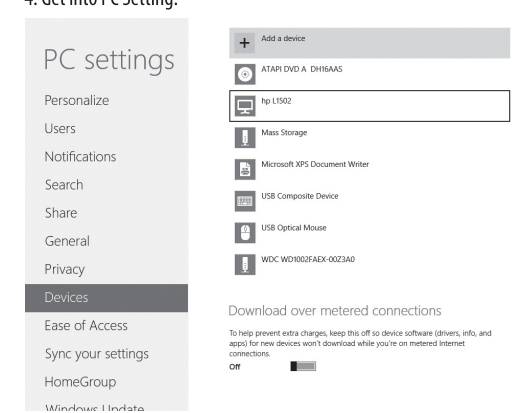
SETUP BLUETOOTH MOUSE

Windows 8 or up

1. Switch the mouse to Bluetooth mode.
2. Press the "window" button to get into Computer.
3. Click the Bluetooth icon on the task bar and then click "Add a Bluetooth Device".



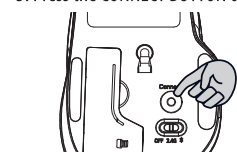
4. Get into PC Setting.



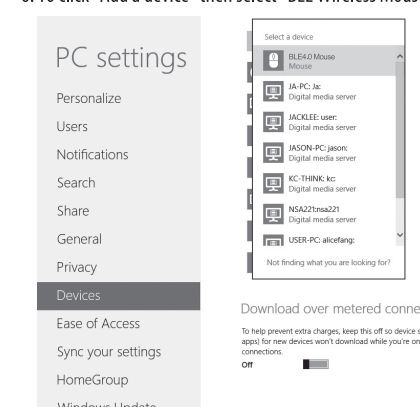
- 3 -

October 25, 2019_V1

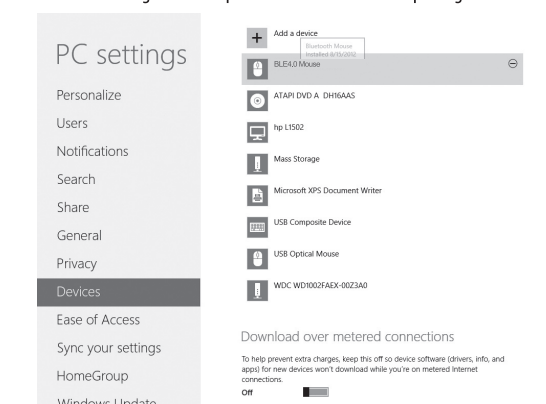
5. Press the CONNECT BUTTON on the underside of the mouse.



6. To click "Add a device" then select "BLE Wireless Mouse".



7. Selected setting will show paired or connected when pairing success.

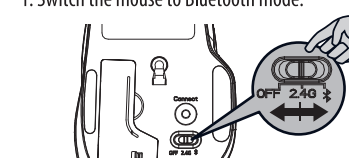


- 4 -

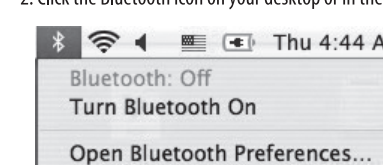
October 25, 2019_V1

MAC

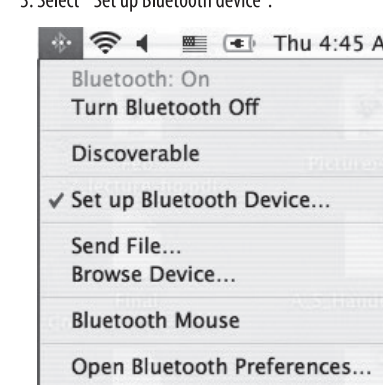
1. Switch the mouse to Bluetooth mode.



2. Click the Bluetooth icon on your desktop or in the system bar, then select "Turn Bluetooth On".



3. Select "Set up Bluetooth device".

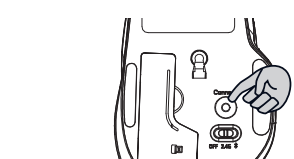


4. The "Bluetooth Setup Assistant" tab would appear. Please follow the instructions and click "continue".
5. Select "Mouse" then click "continue", your mouse needs to be in "discovery" mode to be detected, therefore while the computer is searching for the mouse press the "connect" button on the bottom of the mouse.

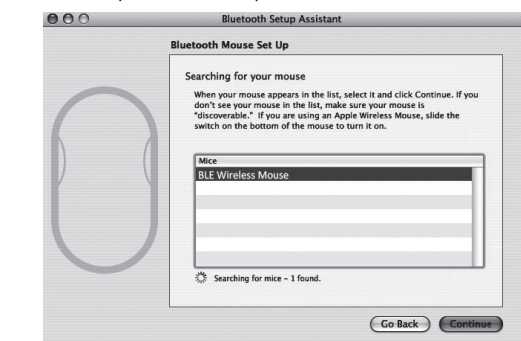
- 5 -

October 25, 2019_V1

6. Press the CONNECT BUTTON on the underside of the mouse.



7. Select the specific mouse then press "continue".



8. The computer is pairing with the mouse. Press "continue".

9. Your Bluetooth mouse is setup click "Quit" to exit the tab.

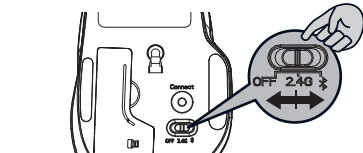


- 6 -

October 25, 2019_V1

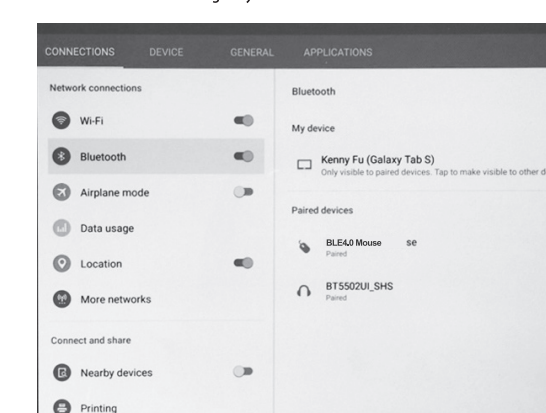
Android Tablet

1. Switch the mouse to Bluetooth mode.



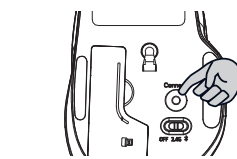
2. Click the setting icon on your Android tablet.

3. Turn on Bluetooth setting on your tablet.



4. Press and hold the connect button on mouse for approximately 3 second.

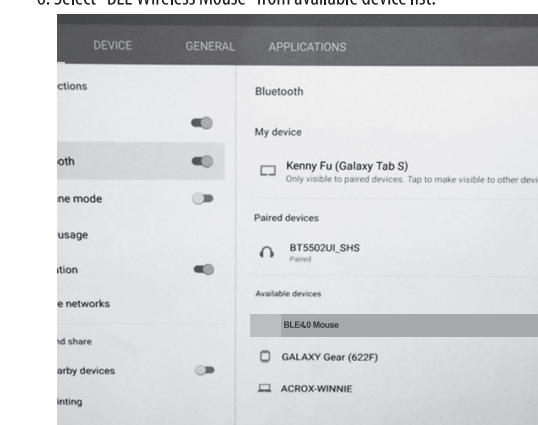
5. Press the CONNECT BUTTON on the underside of the mouse.



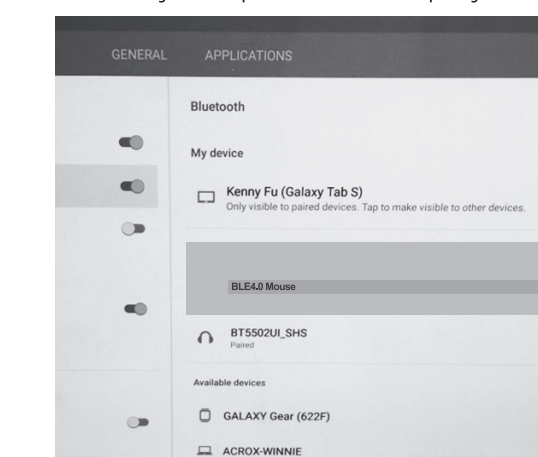
- 7 -

October 25, 2019_V1

6. Select "BLE Wireless Mouse" from available device list.



7. Selected setting will show paired or connected when pairing success.



Disconnecting Bluetooth mouse from your computer

If you would like to disconnect your Bluetooth mouse, just open the Bluetooth devices control panel and delete the pairing for the mouse.

- 8 -

October 25, 2019_V1

Establishing a Bluetooth Connection

The Bluetooth mouse can work in 4.0 Bluetooth environment. Before connecting your Bluetooth mouse with your computer, make sure your computer has a working Bluetooth configuration with Human Interface Device (HID) profile. If your computer does not support Bluetooth 4.0, you need to obtain and install a commercially available Bluetooth dongle which converts your computer to a Bluetooth environment.

WIRELESS CONNECTION BETWEEN WIRELESS BLUETOOTH MOUSE TO COMPUTER OR ANDROID TABLET

If your wireless mouse has not been connected to your computer or Android tablet after completing the previous steps, the following information will help you to complete the connection..

1. Make sure the computer or Android tablet is on.
2. Switch the mouse to 2.4GHz or Bluetooth mode.
3. 2.4GHz mode: Plug Nano Receiver and press the CONNECT BUTTON on the underside of the mouse Bluetooth mode: press the CONNECT BUTTON on the underside of the mouse.
4. DPI Switch Key will flash 10 seconds to indicate the mouse is pairing on the computer or Android tablet.

PACKAGE CONTENTS

- Wireless Bluetooth Mouse
- Nano Receiver
- 1 x AA Battery
- User's Manual

BATTERY WARNING STATEMENT

Do not mix old and new batteries.
Do not mix alkaline, standard (carbon-zinc), or rechargeable (ni-cad, ni-mh, etc) batteries.

- 9 -

October 25, 2019_V1

Federal Communication Commission Interference Statement

This equipment has been tested and found to comply with the limits for a Class B digital device, pursuant to Part 15 of the FCC Rules. These limits are designed to provide reasonable protection against harmful interference in a residential installation. This equipment generates, uses and can radiate radio frequency energy and, if not installed and used in accordance with the instructions, may cause harmful interference to radio communications. However, there is no guarantee that interference will not occur in a particular installation. If this equipment does cause harmful interference to radio or television reception, which can be determined by turning the equipment off and on, the user is encouraged to try to correct the interference by one of the following measures:

- Reorient or relocate the receiving antenna.
- Increase the separation between the equipment and receiver.
- Connect the equipment into an outlet on a circuit different from that to which the receiver is connected.
- Consult the dealer or an experienced radio/TV technician for help.

This device complies with Part 15 of the FCC Rules. Operation is subject to the following two conditions: (1) This device may not cause harmful interference, and (2) this device must accept any interference received, including interference that may cause undesired operation.

Radiation Exposure Statement:
The product complies with the FCC portable RF exposure limit set forth for an uncontrolled environment and are safe for intended operation as described in this manual. The further RF exposure reduction can be achieved if the product can be kept as far as possible from the user body or set the device to lower output power if such function is available.

FCC Caution: Any changes or modifications not expressly approved by the party responsible for compliance could void the user's authority to operate this equipment.

Walmart Inc.,
Bentonville, AR 72716

- 10 -

October 25, 2019_V1

Need help?
We're here for you every day from 7 a.m. - 9 p.m. CST.
Give us a call at 1-888-516-2630

October 25, 2019_V1

We'd love to hear from you.
Scan with your Walmart app and let us know what you think.



6 8113115094118