

Federal Communication Commission Interference Statement

This equipment has been tested and found to comply with the limits for a Class B digital device, pursuant to Part 15 of the FCC Rules. These limits are designed to provide reasonable protection against harmful interference in a residential installation. This equipment generates, uses and can radiate radio frequency energy and, if not installed and used in accordance with the instructions, may cause harmful interference to radio communications. However, there is no guarantee that interference will not occur in a particular installation. If this equipment does cause harmful interference to radio or television reception, which can be determined by turning the equipment off and on, the user is encouraged to try to correct the interference by one of the following measures:

- Reorient or relocate the receiving antenna.
- Increase the separation between the equipment and receiver.
- Connect the equipment into an outlet on a circuit different from that to which the receiver is connected.
- Consult the dealer or an experienced radio/TV technician for help.

This device complies with Part 15 of the FCC Rules. Operation is subject to the following two conditions: (1) This device may not cause harmful interference, and (2) this device must accept any interference received, including interference that may cause undesired operation.

Radiation Exposure Statement:

The product complies with the FCC portable RF exposure limit set forth for an uncontrolled environment and are safe for intended operation as described in this manual. The further RF exposure reduction can be achieved if the product can be kept as far as possible from the user body or set the device to lower output power if such function is available.

FCC Caution: Any changes or modifications not expressly approved by the party responsible for compliance could void the user's authority to operate this equipment.

BATTERY WARNING STATEMENT

Do not mix old and new batteries.
Do not mix alkaline, standard (carbon-zinc), or rechargeable (ni-cad, ni-mh, etc) batteries.

Wal-Mart Stores, Inc.,
Bentonville, AR 72716
Hotline: 1-800-925-6278

Ver.01 Rev.19/12/17



WIRELESS MOUSE

Model: BWA18HO007

PRODUCT GUIDE

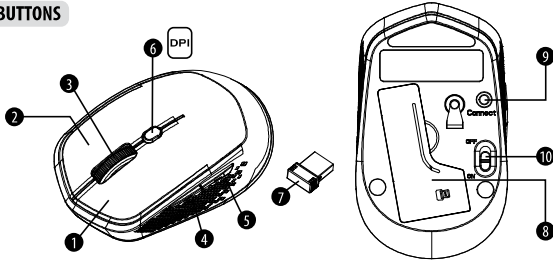
Ver.01 Rev.19/12/17

OPERATING SYSTEM

- * Microsoft Windows 7
- * Microsoft Windows 8
- * Microsoft Windows 10

* Mac OS X 10.5 and later

BUTTONS



- 1. Left Button
- 2. Right Button
- 3. Scrolling Wheel
- 4. Forward
- 5. Backward
- 6. DPI Switch Key
- 7. Nano Receiver
- 8. Battery Cover
- 9. Connect Button
- 10. OFF/ON Switch

Forward

Press this button to view the next page in your Internet browser.

Backward

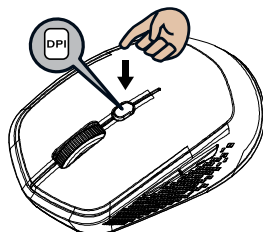
Press this button to view the previous page in your Internet browser.

DPI Switch Key (Five different DPI)

a) 5 adjustable DPI

The blink on key indicates the DPI setting in use

DPI	Blink
600 dpi	1
1000 dpi	2
1600 dpi	3
2400 dpi	4
3600 dpi	5



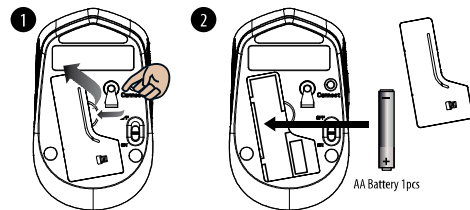
b) Default is 1600 DPI

SETUP YOUR WIRELESS MOUSE

Step 1: Take the BATTERY COVER off

Step 2: Insert the batteries as shown inside the battery storage

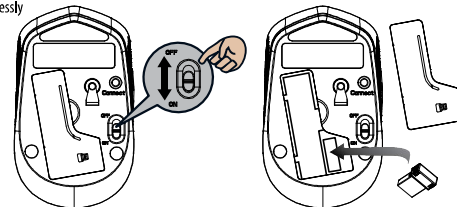
Step 3: Replace the battery cover



Step 4: Insert the NANO RECEIVER into your computer

Step 5: Turn on the Power Switch

Step 6: Your mouse will connect automatically, letting you use your mouse wirelessly



SETUP THE CONNECTION BETWEEN YOUR WIRELESS MOUSE AND COMPUTER

If your wireless mouse has not been connected to your computer after completing the previous steps, the following information will help you to complete the connection

1. Re-plug the receiver into the USB port on your computer
2. Press the CONNECT BUTTON on the underside of the mouse
3. Your mouse will connect automatically

PACKAGE CONTENTS

- Wireless Mouse
- Nano Receiver
- 1 x AA Battery
- User's Manual