



Final flat size: 371.48 x 148.08 mm
Final fold size: 123.82 x 148.08 mm



PLATINUM

PACKAGE CONTENTS

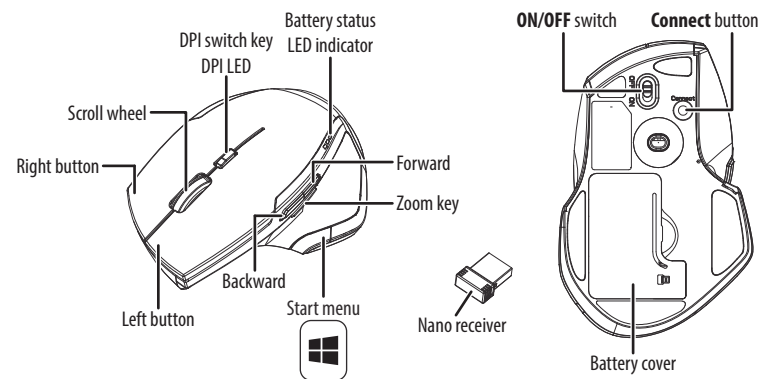
- Wireless laser mouse
- Nano receiver
- AA batteries (2)
- Quick Setup Guide

SYSTEM REQUIREMENTS

- Windows® 10, Windows® 8.1, Windows® 8, Windows® 7, Windows Vista®, or Mac OS 10.X or higher
- One available USB port

FEATURES

- Track-on-Glass Laser Sensor for enhanced tracking

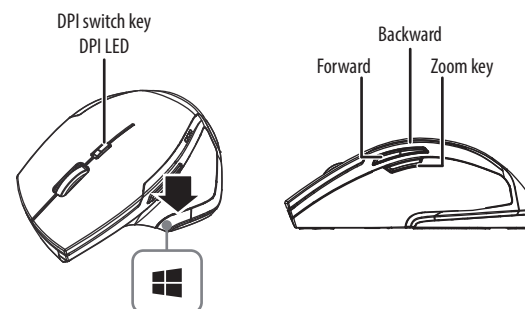


DPI SWITCH

The Power/DPI LED indicator behind the tilt wheel lights up when you plug the mouse into the USB port. The brightness of the LED indicates the DPI setting in use. There are three different settings:

- Bright: 2400 DPI
- Dim: 1600 DPI
- No light: 800 DPI

The default setting is 800 DPI. You can switch between DPI settings by pressing the switch and cycling through the DPI settings. In order to save power, the LED only stays on for 10 seconds.



Forward

- Press this button to view the next page in your Internet browser.

Backward

- Press this button to view the previous page in your Internet browser.

Zoom Key (Zoom in /out)

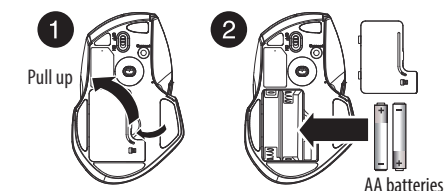
- Press the Zoom key and turn the scroll wheel at the same time to zoom in and out.

Win Key

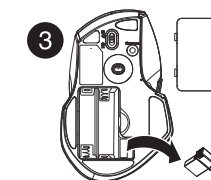
- Press this button to access the Start screen.

SETTING UP YOUR MOUSE

- 1 Remove the battery cover.
- 2 Replace the battery cover.

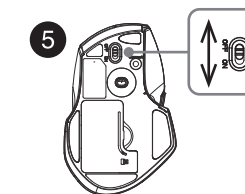


- 3 Remove the nano receiver.



- 4 Insert two AA batteries (included) into the battery compartment. Make sure that the + and - signs match the symbols in the compartment.

- 5 Turn on the power switch.



PT-PNM6506-BK-C

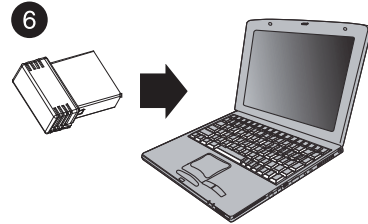
WIRELESS LASER MOUSE

QUICK SETUP GUIDE

Before using your new product, please read these instructions to prevent any damage.



6 Plug the nano receiver into the USB port on your computer.

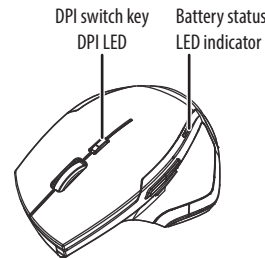


7 Test your mouse to make sure that it works with your computer.

8 If the mouse does not work, put it into pairing mode by unplugging and replugging the nano receiver into the USB port on your computer, then pressing the **Connect** button on the mouse.

Warning: If you need to travel with your wireless mouse, make sure that you slide the power switch to off.

LED INDICATORS



DPI switch key DPI LED

FUNCTION	DESCRIPTION
Power ON	LED is on for 10 seconds
Pairing	LED blinks. (LED OFF when paired or failed after 10 seconds)
Low battery	LED blinks for 10 seconds
When DPI switched	DPI indicated

Battery status LED indicator

STATUS	DESCRIPTION (status will show for five seconds at power on, or blink status for five seconds after waking from sleep mode)
3 LED	80~100% of maximum battery
2 LED	50~70% of maximum battery
1 LED	20~40% of maximum battery

CLEANING YOUR MOUSE

- Wipe the mouse with a damp, lint-free cloth.

SPECIFICATIONS

Mouse:

- Dimensions (L×W×H): 4.96 × 3.24 × 1.76 in. (12.59 × 8.23 × 4.48 cm)
- Weight: 3.17 oz. (.09 kg)
- Batteries: 2 AA alkaline batteries
- Battery life: 12 months (based on average usage)
- Radio frequency: 2.4 Ghz
- Operating distance: 32.8 feet (10 meters)
- Rating: 3V D.C. - 10 mA

Nano receiver:

- Dimensions (L×W×H): .074 × 0.57 × 0.25 in. (18.9 × 14.5 × 6.25 cm)
- Weight: 0.17 oz. (.005 kg)
- Interface: USB 1.1, 2.0, 3.0

IMPORTANT SAFETY INFORMATION

- This product has no serviceable parts. Use of controls or adjustments of procedures other than this guide may result in danger.
- DO NOT direct the laser beam at anyone's eye.

CAUTION: To use this product properly, please read this guide before installing.

This device complies with Industry Canada license-exempt RSS standard(s).

Operation is subject to the following two conditions: (1) this device may not cause interference, and (2) this device must accept any interference, including interference that may cause undesired operation of the device.

Le présent appareil est conforme aux CNR d'Industrie Canada applicables aux appareils radio exempts de licence. L'exploitation est autorisée aux deux conditions suivantes : (1) l'appareil ne doit pas produire de brouillage, et (2) l'utilisateur de l'appareil doit accepter tout brouillage radioélectrique subi, même si le brouillage est susceptible d'en compromettre le fonctionnement.

TROUBLESHOOTING

My mouse is not working.

- Move your mouse and computer closer together.
- Make sure that your computer meets the system requirements.
- Only use the mouse on a clean, flat, non-slippery surface to ensure smooth and accurate cursor action. Avoid using your mouse on reflective, transparent, or metallic surfaces.
- If your mouse stops working:
 - Make sure that your mouse and nano receiver are paired by pressing the connect button on the mouse.
 - Try connecting your nano receiver into a different USB port on your computer.
 - Replace the mouse batteries.

LEGAL NOTICES

- This product complies with IEC 60825-1, class 1 laser product.

This equipment has been tested and found to comply with the limits for a Class B digital device, pursuant to Part 15 of the FCC Rules. These limits are designed to provide reasonable protection against harmful interference in a residential installation. This equipment generates, uses and can radiate radio frequency energy and, if not installed and used in accordance with the instructions, may cause harmful interference to radio communications. However, there is no guarantee that interference will not occur in a particular installation. If this equipment does cause harmful interference to radio or television reception, which can be determined by turning the equipment off and on, the user is encouraged to try to correct the interference by one of the following measures:

- Reorient or relocate the receiving antenna.
- Increase the separation between the equipment and receiver.
- Connect the equipment into an outlet on a circuit different from that to which the receiver is connected.
- Consult the dealer or an experienced radio/TV technician for help.

FCC Caution: Any changes or modifications not expressly approved by the party responsible for compliance could void the user's authority to operate this equipment.

This device complies with Part 15 of the FCC Rules. Operation is subject to the following two conditions: (1) This device may not cause harmful interference, and (2) this device must accept any interference received, including interference that may cause undesired operation.

Radiation Exposure Statement:

The product comply with the FCC portable RF exposure limit set forth for an uncontrolled environment and are safe for intended operation as described in this manual. The further RF exposure reduction can be achieved if the product can be kept as far as possible from the user body or set the device to lower output power if such function is available.

ONE-YEAR LIMITED WARRANTY

CONTACT PLATINUM

For customer service, call 1-800-499-3964

The Pt logo is a registered trademark of Best Buy.

PLATINUM is a trademark of Best Buy and its affiliated companies. Distributed by Best Buy Purchasing, LLC ©2015 Best Buy. All rights reserved. **Made in China**