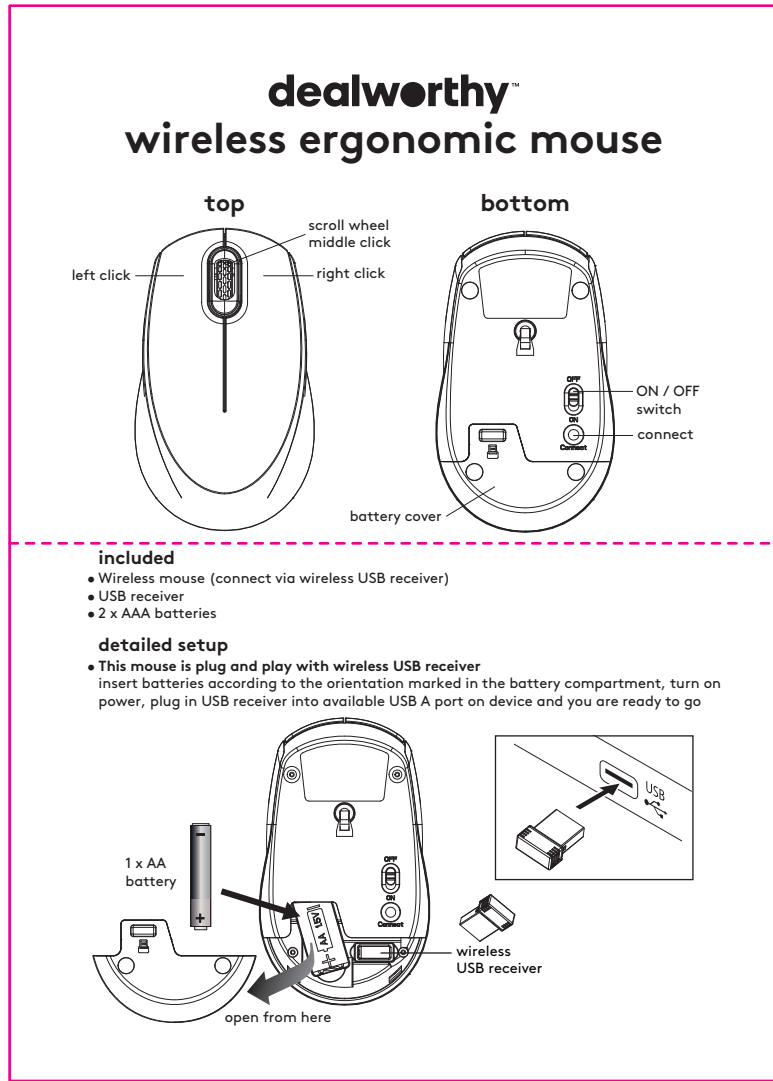


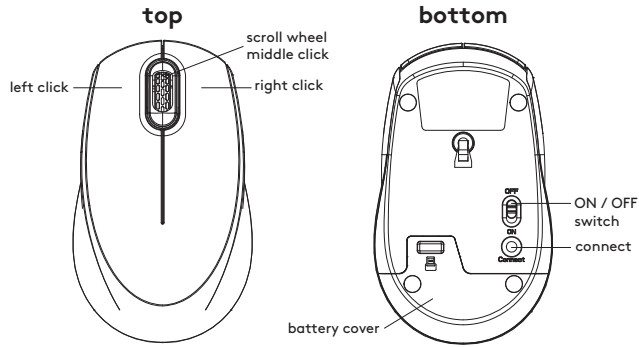
G7C+MQJ(2.4G wireless ergonomic mouse) for dealworthy Instructions Manual

Size: 4 in x 5.6 in = 101.6 x 142.24mm

4in = 101.6mm



dealworthy™ wireless ergonomic mouse

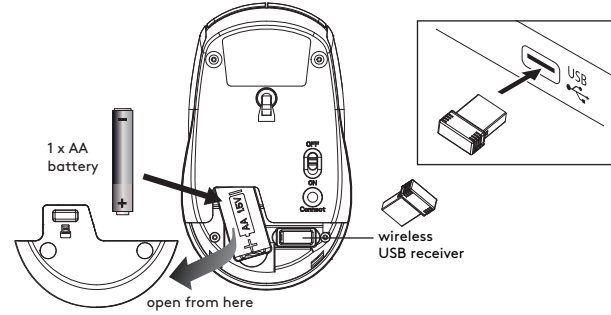


included

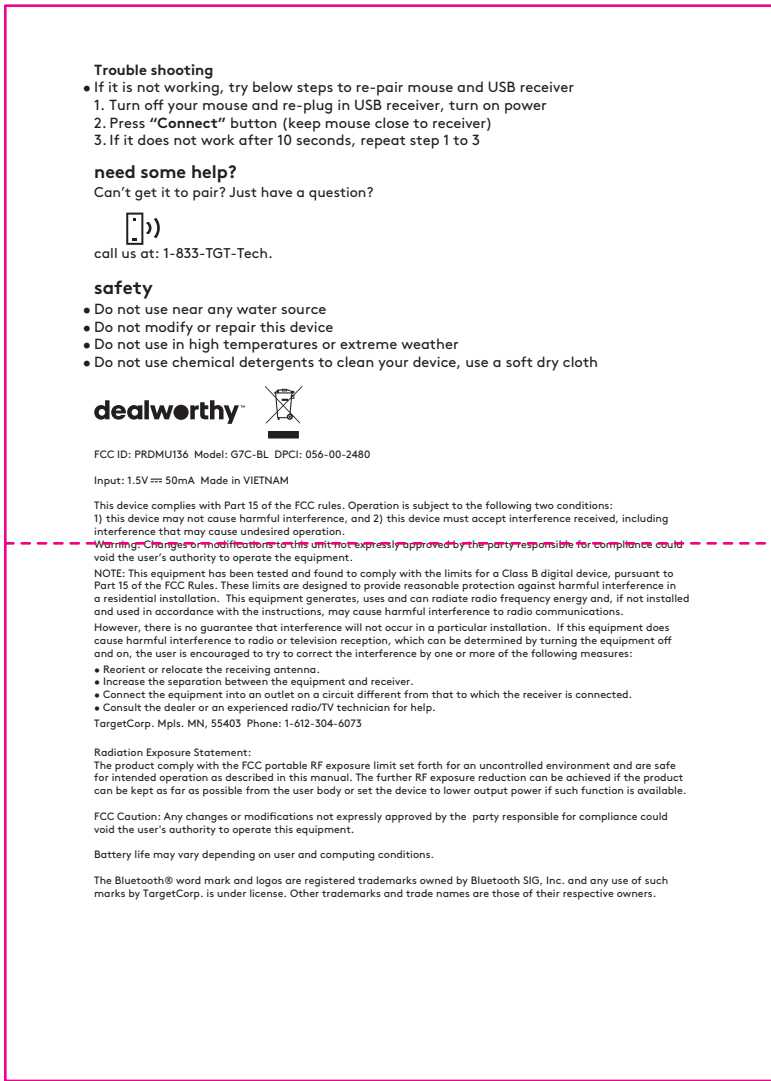
- Wireless mouse (connect via wireless USB receiver)
- USB receiver
- 2 x AAA batteries

detailed setup

- This mouse is plug and play with wireless USB receiver
- insert batteries according to the orientation marked in the battery compartment, turn on power, plug in USB receiver into available USB A port on device and you are ready to go



cover



Trouble shooting

- If it is not working, try below steps to re-pair mouse and USB receiver
1. Turn off your mouse and re-plug in USB receiver, turn on power
 2. Press "Connect" button (keep mouse close to receiver)
 3. If it does not work after 10 seconds, repeat step 1 to 3

need some help?

Can't get it to pair? Just have a question?



call us at: 1-833-TGT-Tech.

safety

- Do not use near any water source
- Do not modify or repair this device
- Do not use in high temperatures or extreme weather
- Do not use chemical detergents to clean your device, use a soft dry cloth



FCC ID: PRDMU136 Model: G7C-BL DPCI: 056-00-2480

Input: 1.5V ~ 50mA Made in VIETNAM

This device complies with Part 15 of the FCC rules. Operation is subject to the following two conditions:
1) this device may not cause harmful interference, and 2) this device must accept interference received, including interference that may cause undesired operation.

Warning: Changes or modifications to this unit not expressly approved by the party responsible for compliance could void the user's authority to operate the equipment.

NOTE: This equipment has been tested and found to comply with the limits for a Class B digital device, pursuant to Part 15 of the FCC Rules. These limits are designed to provide reasonable protection against harmful interference in a residential installation. This equipment generates, uses and can radiate radio frequency energy and, if not installed and used in accordance with the instructions, may cause harmful interference to radio communications.

However, there is no guarantee that interference will not occur in a particular installation. If this equipment does cause harmful interference to radio or television reception, which can be determined by turning the equipment off and on, the user is encouraged to try to correct the interference by one or more of the following measures:

- Reorient or relocate the receiving antenna.
- Increase the separation between the equipment and receiver.
- Connect the equipment into an outlet on a circuit different from that to which the receiver is connected.
- Consult the dealer or an experienced radio/TV technician for help.

TargetCorp. Mpls. MN, 55403 Phone: 1-612-304-6073

Radiation Exposure Statement:

The product complies with the FCC portable RF exposure limit set forth for an uncontrolled environment and are safe for intended operation as described in this manual. The further RF exposure reduction can be achieved if the product can be kept as far as possible from the user body or set the device to lower output power if such function is available.

FCC Caution: Any changes or modifications not expressly approved by the party responsible for compliance could void the user's authority to operate this equipment.

Battery life may vary depending on user and computing conditions.

The Bluetooth® word mark and logos are registered trademarks owned by Bluetooth SIG, Inc. and any use of such marks by TargetCorp. is under license. Other trademarks and trade names are those of their respective owners.

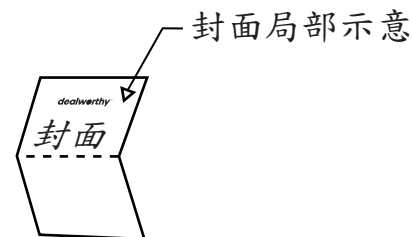
back cover

折線

折線

5.6in = 142.24mm

Project Name: G7C(2.4G wireless ergonomic mouse) for dealworthy Instructions Manual (Made in VIETNAM)_A版_Outline_20240419.ai		
REV. A	印刷順序：印單色，*雙面印刷，上下折(請參考右圖)	PROCESS COLORS
DATE: 2024.04.19	紙質：雙交紙，70磅	K
比例1:1	尺寸： 未折合前-4 in x 5.6 in = 101.6 x 142.24mm 折合後-4 in x 2.8 in = 101.6 x 71.12mm	
— 裁切線 - - - 折線		
簽核：	製作者：Megan	



① 封面朝前上下對折



② 說明書折合完成