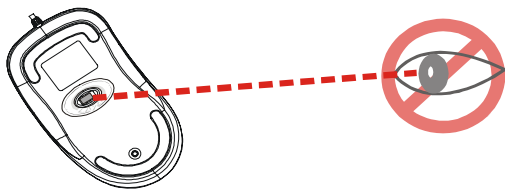
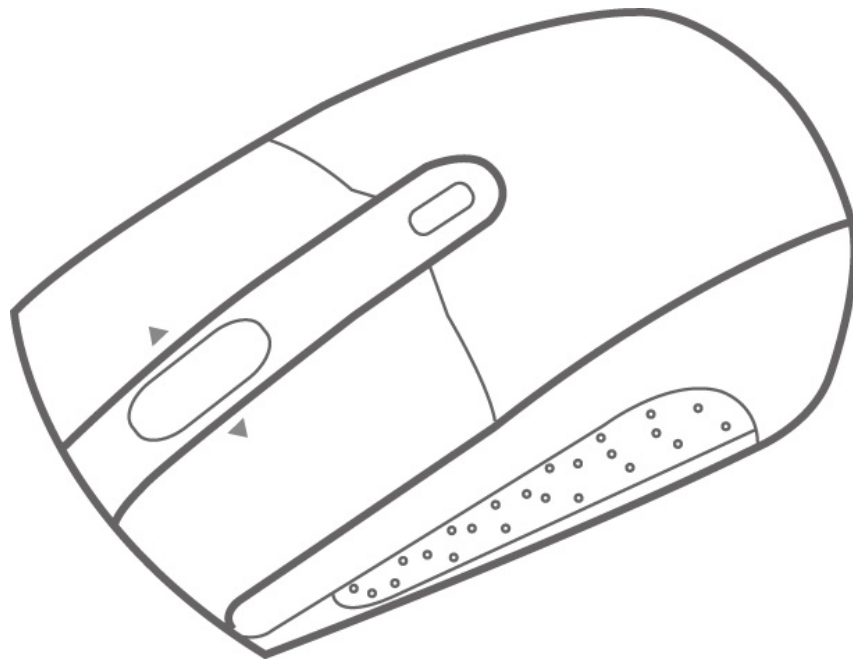


Bluetooth Tilt Wheel Laser Mouse

USER'S GUIDE

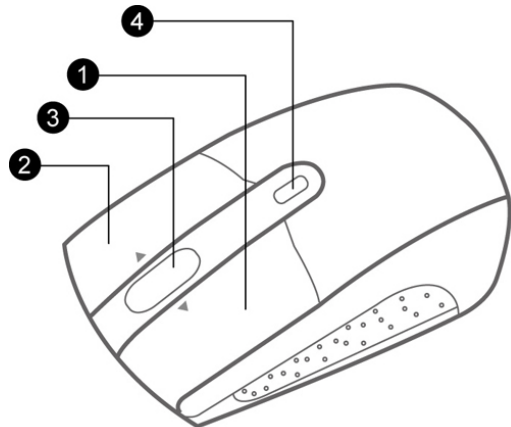
Ver.:1.00



Please DO NOT direct the laser beam at anyone's eye.

Mouse Buttons

1. Left button
2. Right button
3. Tilt wheel
4. DPI switch + LED indicator



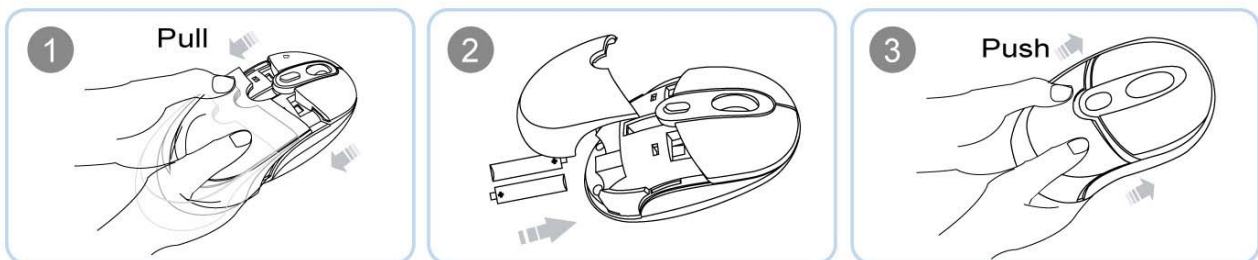
DPI Switch

The brightness of Green LED indicator on the scrolling wheel indicates the DPI setting in use. There are three different settings:

- Bright: 1600 DPI
- Dim: 1200 DPI
- No light: 800 DPI

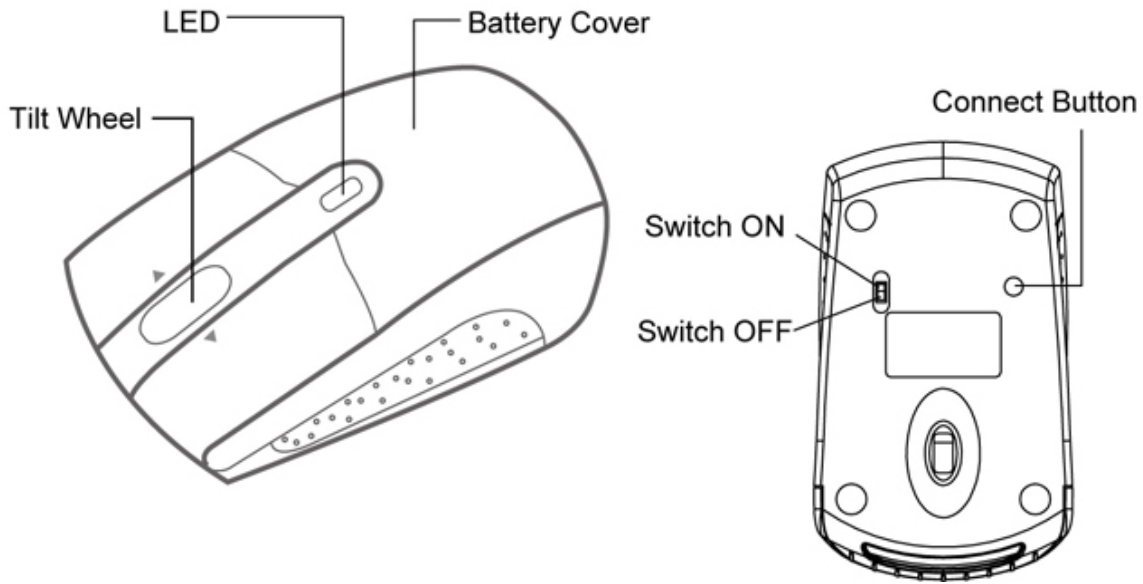
The default setting is 1600 DPI. You can easily switch between DPI settings. In order to save power, the LED display will only last for 10 seconds.

Batteries Installation



For Extra usage hours, use two AA batteries instead of two AAA Batteries.

Functional Introduction:



Power indicator lights:

Power saving features:

To conserve the battery power, the mouse offers power management functions as below:

1. The mouse goes into “Saving Mode” after 10 seconds of inactivity
2. The mouse powers down to “Sleep Mode” after 5 minutes of inactivity

Press one of the mouse buttons to wake it up while in Saving or Sleep Mode. There may be a slight delay while the mouse re-establishes Bluetooth connection from power saving or sleep mode.

	In Use	Saving Mode	Sleep Mode
Power Consumption	14.96mA@3V up on tracking sensitivity	1.78mA@3V	0.27mA@3V

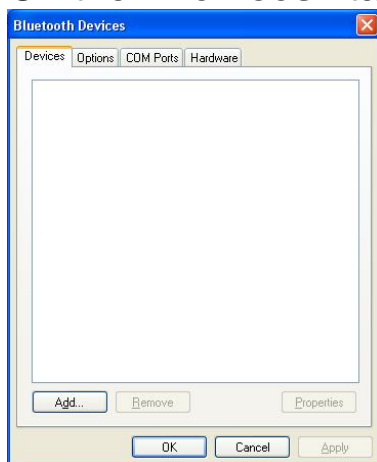
Establishing a Bluetooth Connection

The Bluetooth mouse can work in any Bluetooth working environment. Before connecting your Bluetooth mouse with your computer, make sure your computer has a working Bluetooth configuration that meets Bluetooth Specification v1.1 or higher with Human Interface Device (HID) profile. If your computer does not support Bluetooth, you need to obtain and install a commercially available Bluetooth adapter which converts your computer to a Bluetooth environment.

Pairing your Bluetooth mouse with your computer

Before pairing your Bluetooth mouse with your computer, you should read through the instructions that came with your Bluetooth hardware and software for detail how to pair a device to your specific Bluetooth configuration. Follow below steps to pairing your Bluetooth mouse under Windows XP/SP2 system.

1. Attach or turn on the Bluetooth radio adaptor for your Windows XP computer.
2. Turn on the switch on the bottom of the mouse.
3. Click Start menu, click Control Panel and double click “**Bluetooth Devices**”.
4. On the “**Devices**” tab, click “**Add**”.



5. Select the **“My device is set up and ready to be found”** check box, and then click **“Next”**.



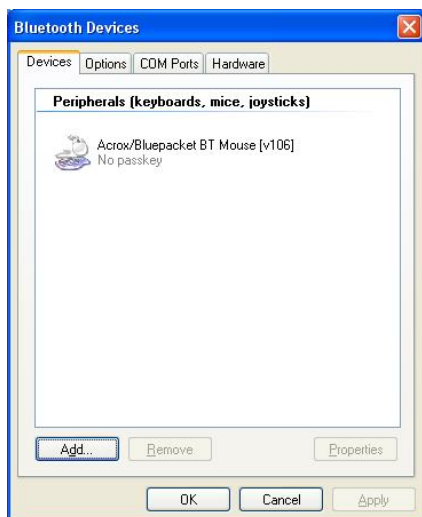
6. Press the connection button of the mouse and it starts pairing with your PC/notebook. The Red LED light will blink when connecting. Click the icon that represents the Bluetooth mouse, and then click **“Next”**.



7. Click **“Don't use a passkey”**, and then click **“Next”**. Check the documentation for the mouse for any passkey instructions.



8. You can find the Bluetooth mouse in the “**Devices**” tab when it connected. The Red LED will turn off automatically when the pairing is successfully done.



Note : Once the Bluetooth mouse is installed, you can either disconnect the wired mouse or leave it connected. (If you leave both mice connected, they will both work.)

Disconnecting Bluetooth mouse from your computer

If you would like to disconnect your Bluetooth mouse, just open the Bluetooth devices control panel and delete the pairing for the mouse.

Federal Communication Commission Interference Statement

This equipment has been tested and found to comply with the limits for a Class B digital device, pursuant to Part 15 of the FCC Rules. These limits are designed to provide reasonable protection against harmful interference in a residential installation. This equipment generates, uses and can radiate radio frequency energy and, if not installed and used in accordance with the instructions, may cause harmful interference to radio communications. However, there is no guarantee that interference will not occur in a particular installation. If this equipment does cause harmful interference to radio or television reception, which can be determined by turning the equipment off and on, the user is encouraged to try to correct the interference by one of the following measures:

- Reorient or relocate the receiving antenna.
- Increase the separation between the equipment and receiver.
- Connect the equipment into an outlet on a circuit different from that to which the receiver is connected.
- Consult the dealer or an experienced radio/TV technician for help.

FCC Caution: Any changes or modifications not expressly approved by the party responsible for compliance could void the user's authority to operate this equipment.

This device complies with Part 15 of the FCC Rules. Operation is subject to the following two conditions: (1) This device may not cause harmful interference, and (2) this device must accept any interference received, including interference that may cause undesired operation.