

FCC PART 15C TEST REPORT FOR CERTIFICATION
On Behalf of

Acrox Technologies Co., Ltd.

AmazonBasics Wireless Keyboard with Touchpad for Smart TVs

Model Number: K4N-US

FCC ID : PRDKB32


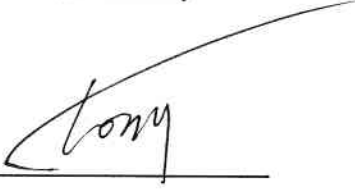

Prepared for:	Acrox Technologies Co., Ltd.
	4F., No.89, Minshan St., Neihu Dist., Taipei City 114, Taiwan
Prepared By:	EST Technology Co., Ltd.
	Chilingxiang, Qishantou, Santun, Houjie, Dongguan, Guangdong, China
	Tel: 86-769-83081888-808

Report Number:	ESTE-R1809030
Date of Test:	Aug. 13 ~ Sep. 04, 2018
Date of Report:	Sep.06, 2018

TABLE OF CONTENTS

Description	Page
TEST REPORT VERIFICATION.....	3
1. GENERAL INFORMATION.....	4
1.1. Description of Device (EUT)	4
2. SUMMARY OF TEST	5
2.1. Summary of test result.....	5
2.2. Test Facilities	6
2.3. Measurement uncertainty	7
2.4. Assistant equipment used for test	7
2.5. Block Diagram	7
2.6. Test mode	8
2.7. Channel List	8
2.8. Test Equipment.....	9
3. RADIATED EMISSIONS.....	10
3.1. Limit	10
3.2. Block Diagram of Test setup.....	11
3.3. Test Procedure.....	12
3.4. Test Result.....	12
3.5. Test Data	13
4. 20 DB BANDWIDTH.....	22
4.1. Test Procedure	22
4.2. Test Result.....	22
4.3. Test Data	22
5. BAND EDGE COMPLIANCE	24
5.1. Block Diagram of Test setup.....	24
5.2. Test Procedure.....	24
5.3. Test Result.....	24
5.4. Test Data	25
6. ANTENNA REQUIREMENTS	29
6.1. Limit	29
6.2. Result.....	29
7. TESTSETUP PHOTO.....	30
8. PHOTO OF EUT.....	31

Test Report

Applicant:	Acrox Technologies Co., Ltd.		
Address:	4F., No.89, Minshan St., Neihu Dist., Taipei City 114, Taiwan		
Manufacturer	Acrox Technologies Co., Ltd.		
Address:	Hsinmin Industria, Changan Town, Dongguan City, Guangdong, China		
E.U.T:	AmazonBasics Wireless Keyboard with Touchpad for Smart TVs		
Model Number:	K4N-US		
Power Supply:	DC 3V (2 x 1.5V AA Batteries)		
Test Voltage:	DC 3V		
Trade Name:	AmazonBasics	Serial No.:	-----
Date of Receipt:	Aug. 07, 2018	Date of Test:	Aug. 13 ~ Sep. 04, 2018
Test Specification:	FCC Rules and Regulations Part 15 Subpart C:2017 ANSI C63.10:2013		
Test Result:	<p>The device described above is tested by EST Technology Co., Ltd.. The measurement results were contained in this test report and EST Technology Co., Ltd. was assumed full responsibility for the accuracy and completeness of these measurements. Also, this report shows that the EUT to be technically compliance with the FCC Rules and Regulations Part 15 Subpart C requirements.</p> <p>This report applies to above tested sample only and shall not be reproduced in part without written approval of EST Technology Co., Ltd. Date: Sep.06, 2018</p>		
Prepared by:	Reviewed by:	Approved by:	
			
Ring / Assistant	Tony / Engineer	Iceman.Hu / Manager	
Other Aspects:	None.		
<i>Abbreviations: OK/P=passed fail/F=failed n.a/N=not applicable E.U.T=equipment under tested</i>			
<i>This test report is based on a single evaluation of one sample of above mentioned products ,It is not permitted to be duplicated in extracts without written approval of EST Technology Co., Ltd.</i>			

1. GENERAL INFORMATION

1.1. Description of Device (EUT)

Product Name	:	AmazonBasics Wireless Keyboard with Touchpad for Smart TVs
FCC ID	:	PRDKB32
Model Number	:	K4N-US
Operation frequency	:	2408MHz-2474MHz
Number of channel	:	34
Antenna	:	PCB antenna -5 dBi gain
Modulation	:	FSK
Sample Type	:	Prototype production

2. SUMMARY OF TEST

2.1. Summary of test result

Description of Test Item	Standard	Results
Power Line Conducted Emissions	FCC Part 15C: 15.207 ANSI C63.10-2013	N/A
Radiated Emission Test	FCC Part 15C: 15.205 FCC Part 15C: 15.209 FCC Part 15C: 15.249(a)(e) ANSI C63.10-2013	PASS
20 dB Bandwidth Test	FCC Part 15: 15.215 ANSI C63.10-2013	PASS
Band Edge Compliance Test	FCC Part 15C: 15.205 FCC Part 15C: 15.209 FCC Part 15C: 15.249(a)(e) ANSI C63.10-2013	PASS
Antenna requirement	FCC Part 15: 15.203	PASS
N/A is an abbreviation for Not Applicable.		

2.2. Test Facilities

EMC Lab	:	<p>Certificated by CNAS, CHINA Registration No.: L5288 Date of registration: November 13, 2017</p> <p>Certificated by A2LA, USA Registration No.: 4366.01 Date of registration: November 07, 2017</p> <p>Certificated by FCC, USA Designation Number: CN1215 Registration No.: 722932 Date of registration: November 21, 2017</p> <p>Certificated by Industry Canada Registration No.: 9405A Date of registration: December 03, 2015</p> <p>Certificated by VCCI, Japan Registration No.: R-13663; C-14103 Date of registration: July 25, 2017 This Certificate is valid until: July 24, 2020</p> <p>Certificated by TUV Rheinland, Germany Registration No.: UA 50195514 0001 Date of registration: February 07, 2015</p> <p>Certificated by TUV/PS, Shenzhen Registration No.: SCN1017 Date of registration: January 27, 2011</p> <p>Certificated by Intertek ETL SEMKO Registration No.: 2011-RTL-L2-64 Date of registration: April 28, 2011</p> <p>Certificated by Nemko, Hong Kong Registration No.: 175193 Date of registration: May 4, 2011</p>
Name of Firm	:	EST Technology Co., Ltd.
Site Location	:	Chilingxiang, Qishantou, Santun, Houjie, Dongguan, Guangdong, China

2.3. Measurement uncertainty

Test Item	Uncertainty
Uncertainty for Conduction emission test	±3.48dB
Uncertainty for spurious emissions test (30MHz-1GHz)	±4.60 dB(Polarize: H)
	±4.68 dB(Polarize: V)
Uncertainty for spurious emissions test (1GHz to 18GHz)	±4.96dB
Uncertainty for radio frequency	7×10^{-8}
Uncertainty for conducted RF Power	0.20dB
Uncertainty for Power density test	0.26dB

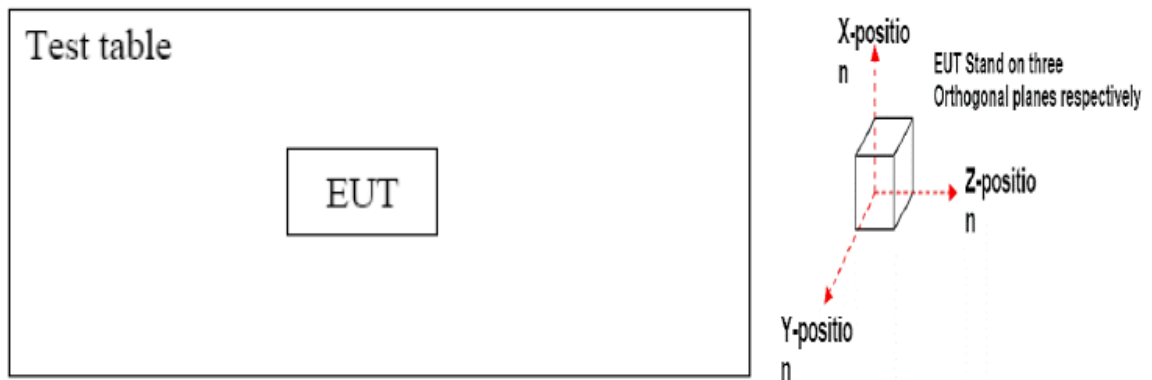
Note: This uncertainty represents an expanded uncertainty expressed at approximately the 95% confidence level using a coverage factor of k=2.

2.4. Assistant equipment used for test

2.4.1. N/A

2.5. Block Diagram

For radiated emissions test: EUT was placed on a turn table, which is 0.8 or 1.5 meter high above ground. EUT was be set into TX test mode by software.



(EUT: AmazonBasics Wireless Keyboard with Touchpad for Smart TVs)

Note: We test X-axis, Y-axis, and Z-axis,. The Y-axis is the worst mode, so only the worst mode test data was included in the report.

2.6. Test mode

The test software was used to control EUT work in Continuous TX mode.

Mode	Frequency	
TX	CH 1	2408 MHz
	CH 17	2440 MHz
	CH 34	2474 MHz

2.7. Channel List

Channel No.	Frequency (MHz)	Channel No.	Frequency (MHz)
1	2408	18	2442
2	2410	19	2444
3	2412	20	2446
4	2414	21	2448
5	2416	22	2450
6	2418	23	2452
7	2420	24	2454
8	2422	25	2456
9	2424	26	2458
10	2426	27	2460
11	2428	28	2462
12	2430	29	2464
13	2432	30	2466
14	2434	31	2468
15	2436	32	2470
16	2438	33	2472
17	2440	34	2474

2.8. Test Equipment

2.8.1. For conducted emission test

Equipment	Manufacturer	Model No.	Serial No.	Calibration Body	Last Cal.	Next Cal.
EMI Test Receiver	Rohde & Schwarz	ESHS30	832354	CEPREI	June 15,18	1 Year
Artificial Mains Network	Rohde & Schwarz	ENV216	101260	CEPREI	June 15,18	1 Year
Pulse Limiter	Rohde & Schwarz	ESH3-Z2	101100	CEPREI	June 15,18	1 Year
Test Software	Audix	e3-6.111221a	N/A	N/A	N/A	N/A

2.8.2. For radiated emission test(9 kHz-30MHz)

Equipment	Manufacturer	Model No.	Serial No.	Calibration Body	Last Cal.	Next Cal.
EMI Test Receiver	Rohde & Schwarz	ESR7	101780	CEPREI	June 15,18	1 Year
Active Loop Antenna	SCHWARZB ECK	FMZB1519	1519-038	CEPREI	October 08,17	1 Year
Test Software	Audix	e3-6.111221a	N/A	N/A	N/A	N/A

2.8.3. For radiated emission test(30-1000MHz)

Equipment	Manufacturer	Model No.	Serial No.	Calibration Body	Last Cal.	Next Cal.
EMI Test Receiver	Rohde & Schwarz	ESR7	101780	CEPREI	June 15,18	1 Year
Bilog Antenna	Teseq	CBL 6111D	27090	CEPREI	June 15,18	1 Year
Test Software	Audix	e3-6.111221a	N/A	N/A	N/A	N/A

2.8.4. For radiated emission test(above 1GHz)

Equipment	Manufacturer	Model No.	Serial No.	Calibration Body	Last Cal.	Next Cal.
Horn Antenna	SCHWARZB ECK	BBHA 9120 D	BBHA912 0D1002	CEPREI	June 18,18	1 Year
Horn Antenna	SCHWARZB ECK	BBHA9170	BBHA917 0242	CEPREI	June 18,18	1 Year
Signal Amplifier	SCHWARZB ECK	BBV9718	9718-212	CEPREI	June 15,18	1 Year
Spectrum Analyzer	Rohde &Schwarz	FSV	103173	CEPREI	June 15,18	1 Year
PSA Series Spertrum Analyzer	Agilent	E4447A	MY50180 031	CEPREI	June 15,18	1 Year
Test Software	Audix	e3-6.111221a	N/A	N/A	N/A	N/A

3. RADIATED EMISSIONS

3.1. Limit

FREQUENCY MHz	DISTANCE Meters	FIELD STRENGTHS LIMIT	
		$\mu\text{V}/\text{m}$	$\text{dB}(\mu\text{V})/\text{m}$
30 ~ 88	3	100	40.0
88 ~ 216	3	150	43.5
216 ~ 960	3	200	46.0
960 ~ 1000	3	500	54.0
Above 1000	3	74.0 $\text{dB}(\mu\text{V})/\text{m}$ (Peak) 54.0 $\text{dB}(\mu\text{V})/\text{m}$ (Average)	

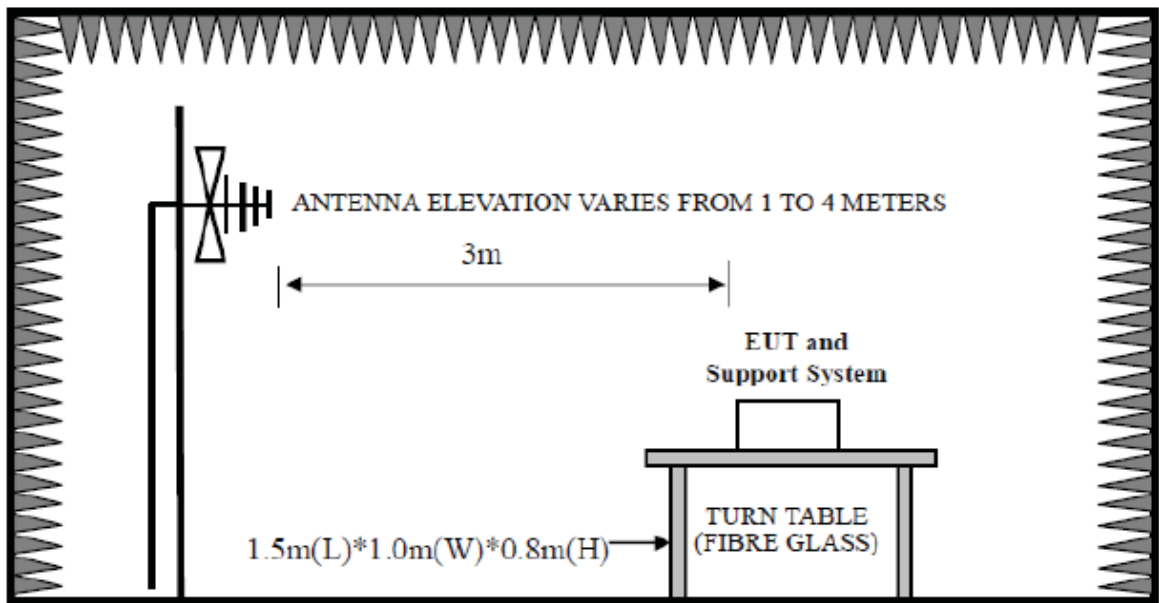
Remark : (1) Emission level $\text{dB}\mu\text{V} = 20 \log$ Emission level $\mu\text{V}/\text{m}$

(2) The smaller limit shall apply at the cross point between two frequency bands.

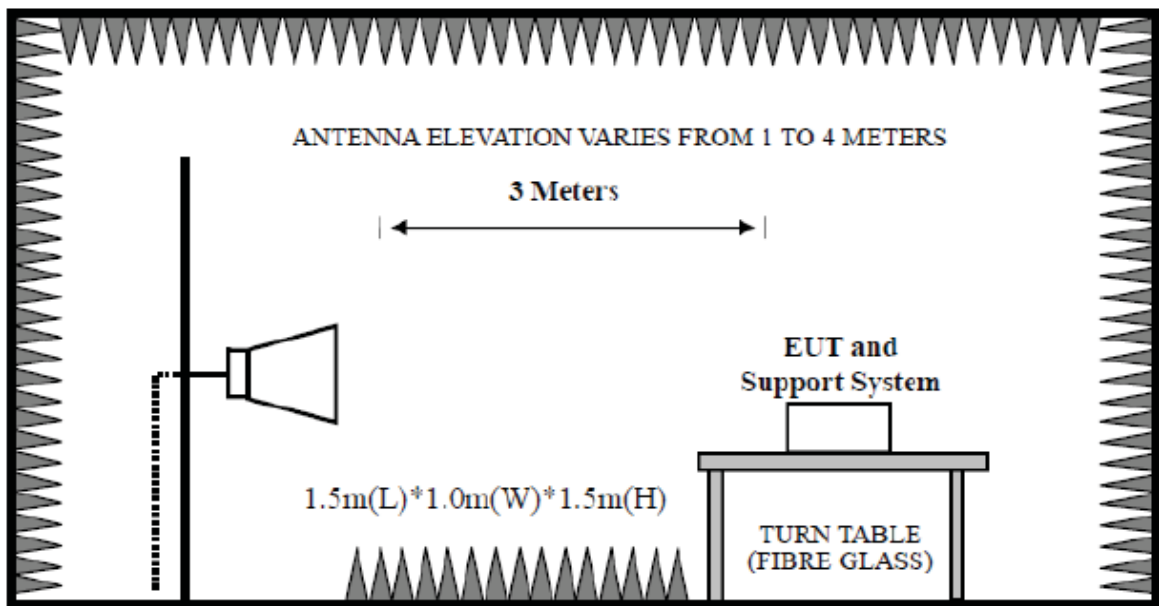
(3) Distance is the distance in meters between the measuring instrument, antenna and the closest point of any part of the device or system

3.2. Block Diagram of Test setup

30~1000MHz



Above 1GHz



3.3. Test Procedure

EUT was placed on a turn table, which is 0.8 meter high above ground for 30~1000MHz test, and which is 1.5 meter high above ground for above 1GHz test. The turn table can rotate 360 degrees to determine the position of the maximum emission level. Power on the EUT and let it working in test mode, then test it. EUT is set 3 meters away from the receiving antenna, which is mounted on a antenna tower. The antenna can be moved up and down between 1 meter and 4 meters to find out the maximum emission level. Both horizontal and vertical polarization of the antenna are set on test.

The bandwidth of the EMI test receiver is set at 120kHz for frequency range from 30MHz to 1000 MHz.

The bandwidth of the Spectrum's VBW is set at 1MHz and RBW is set at 1MHz for peak emissions measurement above 1GHz and 1MHz RBW, 10Hz VBW for average emissions measurement above 1GHz

PEAK detector, 1MHz/1MHz for PEAK measurement,
PEAK detector, 1MHz/10Hz for Average measurement

The frequency range from 30MHz to 10th harmonic (25GHz) are checked.

The EUT position(X.-axis, Y-axis, Z-axis) were checked and worse case was happened in Y-axis position. So Y-axis position was chose for find measurement.

3.4. Test Result

Pass

Note: 1、 For emissions above 1GHz, if peak level comply with average limit, then the average level is deemed to comply with average limit.

3.5. Test Data

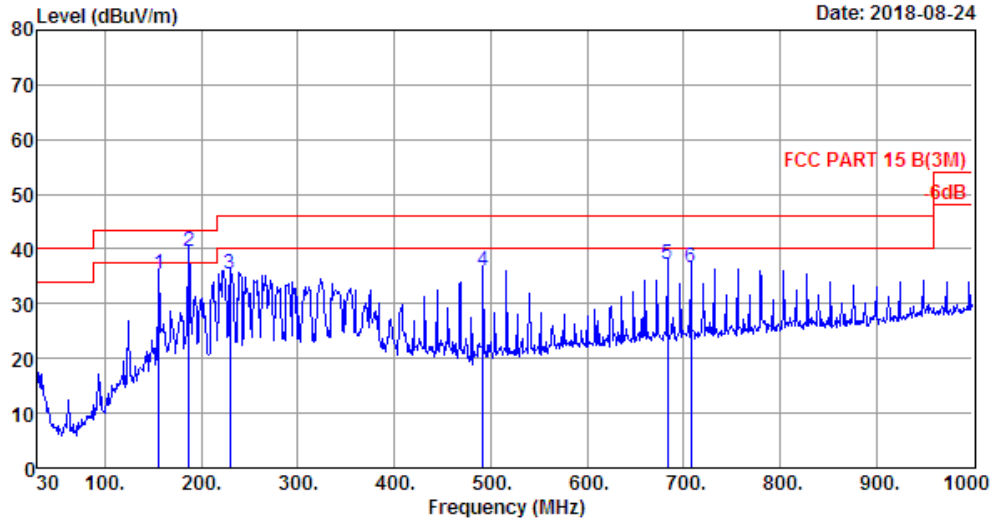
30 MHz – 1000 MHz

EST Technology

Chilingxiang, Qishantou, Santun,
Houjie, Dongguan,Guangdong,China
Tel:+86-769-83081888
Fax:+86-769-83081878

Data: 112 File: \\Emc-966-1\test data\2018\RF\W\Wang Hong,EM6 (129)

Date: 2018-08-24



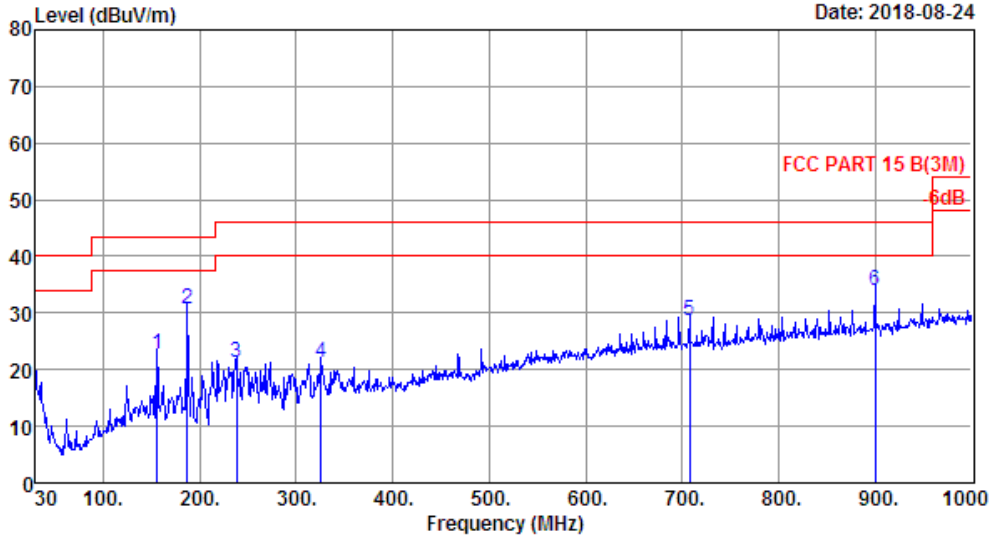
Site no. : 1# 966 Chamber Data no. : 112
 Dis. / Ant. : 3m 37062 Ant. pol. : HORIZONTAL
 Limit : FCC PART 15 B(3M)
 Env. / Ins. : Temp:24.4';Humi:53%;Press:101.52kPa
 Engineer : Viking
 EUT : AmazonBasics Wireless Keyboard with
 Touchpad for Smart TVs
 Power : DC 3V
 M/N : K4N-US
 Test Mode : TX Mode

	Freq. (MHz)	Ant. Factor (dB/m)	Cable Loss (dB)	Amp Factor (dB)	Reading (dBuV)	Emission Level (dBuV/m)	Limits (dBuV/m)	Margin (dB)	Remark
1	156.10	11.44	1.35	0.00	22.51	35.30	43.50	8.20	QP
2	187.14	8.84	1.43	0.00	29.37	39.64	43.50	3.86	QP
3	229.82	10.30	1.72	0.00	23.27	35.29	46.00	10.71	QP
4	491.72	18.15	2.85	0.00	14.88	35.88	46.00	10.12	QP
5	683.78	21.24	3.40	0.00	12.64	37.28	46.00	8.72	QP
6	708.03	21.28	3.50	0.00	11.75	36.53	46.00	9.47	QP

Remarks: 1. Emission Level= Antenna Factor + Cable Loss - Amp Factor + Reading.
 2. Margin= Limit - Emission Level.
 3. The emission levels that are 20dB below the official limit are not reported.

Data: 113 File: \\Emc-966-1\test data\2018\RF\W\Wang Hong.EM6 (129)

Date: 2018-08-24

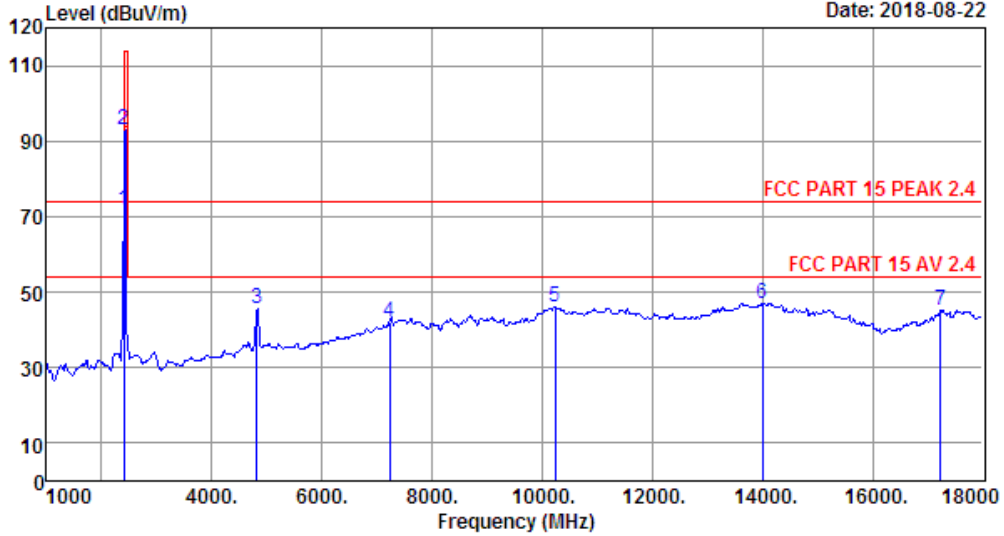


Site no. : 1# 966 Chamber Data no. : 113
 Dis. / Ant. : 3m 37062 Ant. pol. : VERTICAL
 Limit : FCC PART 15 B(3M)
 Env. / Ins. : Temp:24.4';Humi:53%;Press:101.52kPa
 Engineer : Viking
 EUT : AmazonBasics Wireless Keyboard with
 Touchpad for Smart TVs
 Power : DC 3V
 M/N : K4N-US
 Test Mode : TX Mode

	Freq. (MHz)	Ant. Factor (dB/m)	Cable Loss (dB)	Amp Factor (dB)	Reading (dBuV)	Emission Level (dBuV/m)	Limits (dBuV/m)	Margin (dB)	Remark
1	156.10	11.44	1.35	0.00	9.93	22.72	43.50	20.78	QP
2	187.14	8.84	1.43	0.00	20.56	30.83	43.50	12.67	QP
3	238.55	10.92	1.77	0.00	8.57	21.26	46.00	24.74	QP
4	325.85	14.32	2.16	0.00	4.73	21.21	46.00	24.79	QP
5	708.03	21.28	3.50	0.00	3.82	28.60	46.00	17.40	QP
6	900.09	23.90	4.05	0.00	6.05	34.00	46.00	12.00	QP

Remarks: 1. Emission Level= Antenna Factor + Cable Loss - Amp Factor + Reading.
 2. Margin= Limit - Emission Level.
 3. The emission levels that are 20dB below the official limit are not reported.

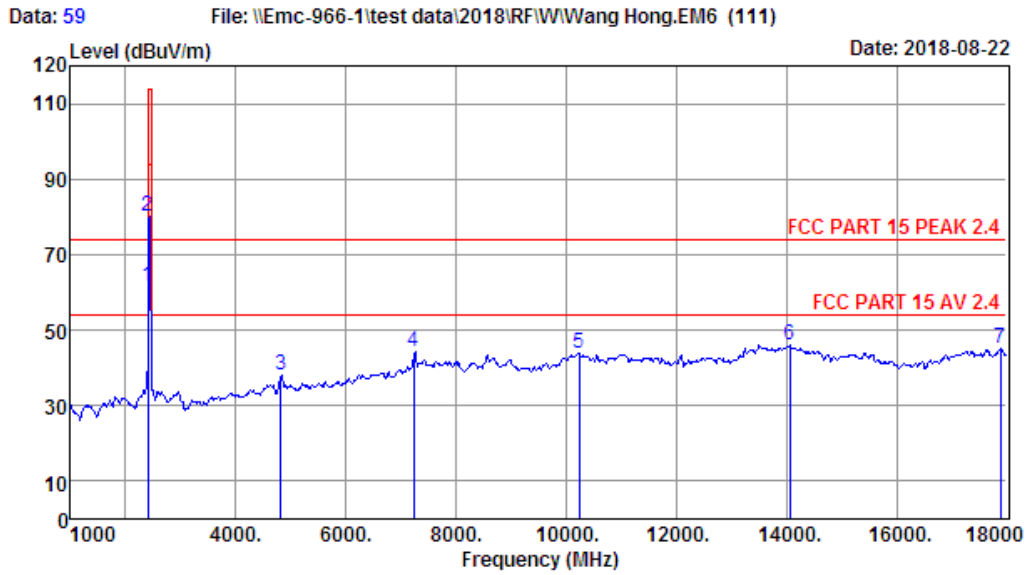
Data: 58 File: \\Emc-966-1\test data\2018\RF\W\Wang Hong,EM6 (111) Date: 2018-08-22



Site no. : 1# 966 Chamber Data no. : 58
Dis. / Ant. : 3m ANT9120D 1-18G Ant. pol. : HORIZONTAL
Limit : FCC PART 15 PEAK 2.4
Env. / Ins. : Temp:23.6';Humi:56%;Press:101.52kPa
Engineer : Viking
EUT : AmazonBasics Wireless Keyboard with
Touchpad for Smart TVs
Power : DC 3V
M/N : K4N-US
Test Mode : TX 2408MHz

	Freq. (MHz)	Ant. Factor (dB/m)	Cable Loss (dB)	Amp Factor (dB)	Reading (dBuV)	Emission Level (dBuV/m)	Limits (dBuV/m)	Margin (dB)	Remark
1	2408.00	27.39	3.23	34.94	76.02	71.70	94.00	22.30	Average
2	2408.00	27.39	3.23	34.94	97.42	93.10	114.00	20.90	Peak
3	4816.00	32.06	4.67	35.08	43.99	45.64	74.00	28.36	Peak
4	7224.00	36.59	6.01	33.42	32.79	41.97	74.00	32.03	Peak
5	10231.00	39.19	9.84	34.41	31.51	46.13	74.00	27.87	Peak
6	14005.00	41.70	10.13	32.88	28.04	46.99	74.00	27.01	Peak
7	17235.00	42.39	10.94	31.21	22.99	45.11	74.00	28.89	Peak

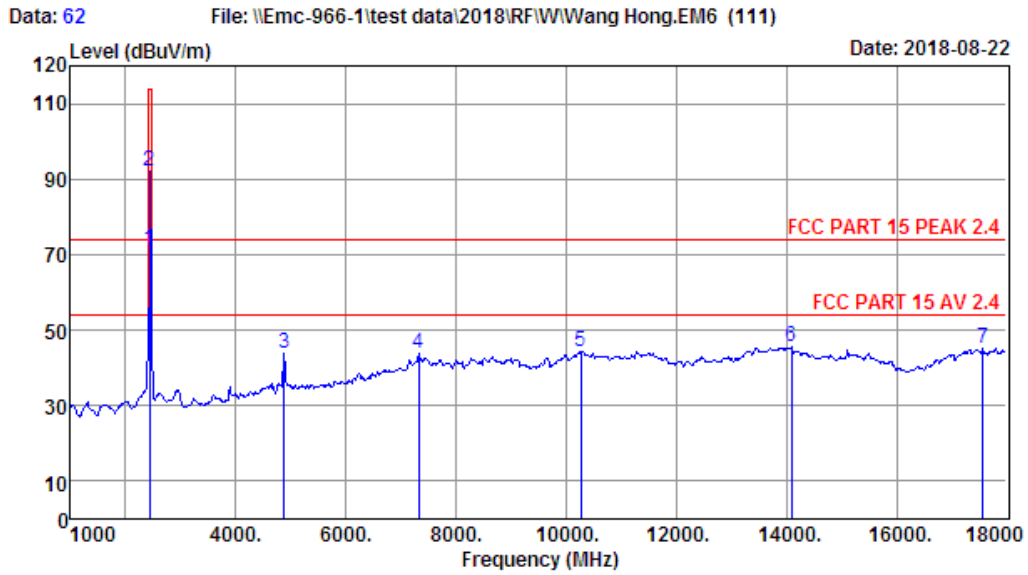
Remarks: 1. Emission Level= Antenna Factor + Cable Loss - Amp Factor + Reading.
2. Margin= Limit - Emission Level.
3. The emission levels that are 20dB below the official limit are not reported.



Site no. : 1# 966 Chamber Data no. : 59
 Dis. / Ant. : 3m ANT9120D 1-18G Ant. pol. : VERTICAL
 Limit : FCC PART 15 PEAK 2.4
 Env. / Ins. : Temp:23.6';Humi:56%;Press:101.52kPa
 Engineer : Viking
 EUT : AmazonBasics Wireless Keyboard with
 Touchpad for Smart TVs
 Power : DC 3V
 M/N : K4N-US
 Test Mode : TX 2408MHz

	Freq. (MHz)	Ant. Factor (dB/m)	Cable Loss (dB)	Amp Factor (dB)	Reading (dBUV)	Emission Level (dBUV/m)	Limits (dBUV/m)	Margin (dB)	Remark
1	2408.00	27.39	3.23	34.94	65.68	61.36	94.00	32.64	Average
2	2408.00	27.39	3.23	34.94	84.31	79.99	114.00	34.01	Peak
3	4816.00	32.06	4.67	35.08	36.60	38.25	74.00	35.75	Peak
4	7224.00	36.59	6.01	33.42	35.16	44.34	74.00	29.66	Peak
5	10231.00	39.19	9.84	34.41	29.30	43.92	74.00	30.08	Peak
6	14056.00	41.65	10.13	32.95	27.10	45.93	74.00	28.07	Peak
7	17881.00	44.39	12.38	31.33	19.51	44.95	74.00	29.05	Peak

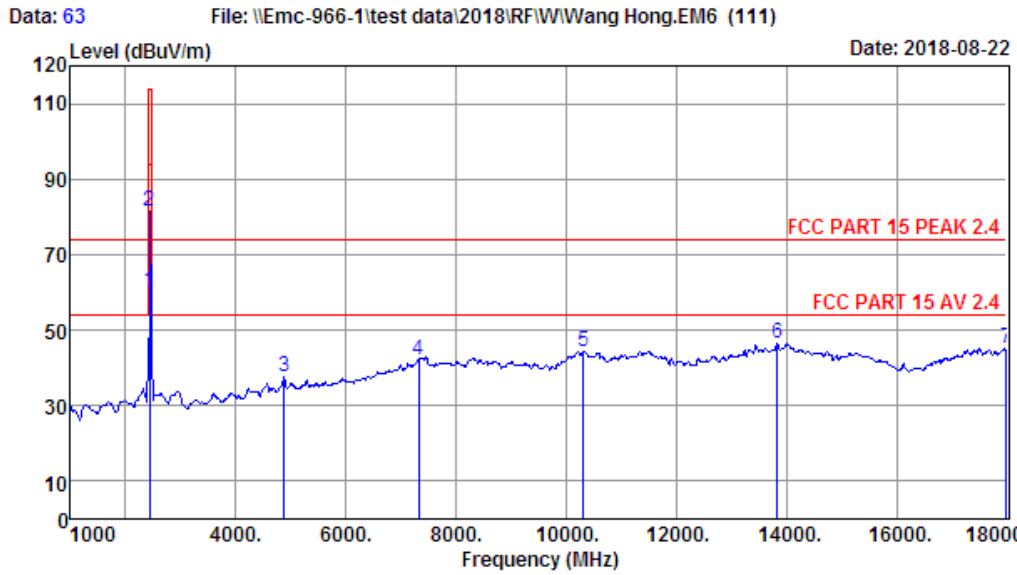
Remarks: 1. Emission Level= Antenna Factor + Cable Loss - Amp Factor + Reading.
 2. Margin= Limit - Emission Level.
 3. The emission levels that are 20dB below the official limit are not reported.



Site no. : 1# 966 Chamber Data no. : 62
 Dis. / Ant. : 3m ANT9120D 1-18G Ant. pol. : HORIZONTAL
 Limit : FCC PART 15 PEAK 2.4
 Env. / Ins. : Temp:23.6';Humi:56%;Press:101.52kPa
 Engineer : Viking
 EUT : AmazonBasics Wireless Keyboard with
 Touchpad for Smart TVs
 Power : DC 3V
 M/N : K4N-US
 Test Mode : TX 2440MHz

	Freq. (MHz)	Ant. Factor (dB/m)	Cable Loss (dB)	Amp Factor (dB)	Reading (dBUV)	Emission Level (dBUV/m)	Limits (dBUV/m)	Margin (dB)	Remark
1	2440.00	27.48	3.26	35.07	75.69	71.36	94.00	22.64	Average
2	2440.00	27.48	3.26	35.07	96.55	92.22	114.00	21.78	Peak
3	4880.00	32.18	4.73	35.14	41.92	43.69	74.00	30.31	Peak
4	7320.00	36.82	6.10	33.28	33.99	43.63	74.00	30.37	Peak
5	10265.00	39.21	9.98	34.39	29.66	44.46	74.00	29.54	Peak
6	14090.00	41.61	10.14	32.99	26.70	45.46	74.00	28.54	Peak
7	17575.00	43.58	11.71	31.27	21.20	45.22	74.00	28.78	Peak

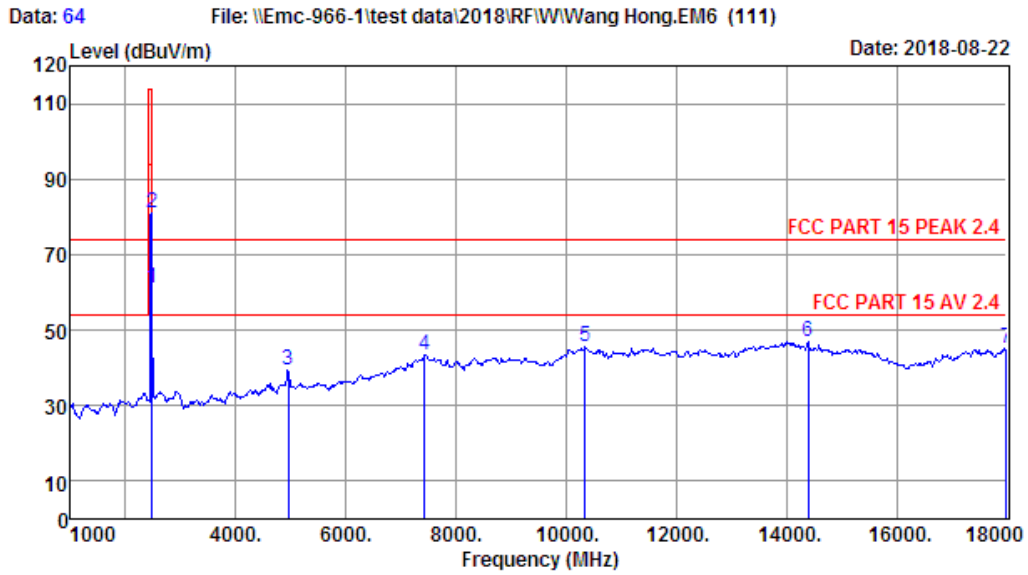
Remarks: 1. Emission Level= Antenna Factor + Cable Loss - Amp Factor + Reading.
 2. Margin= Limit - Emission Level.
 3. The emission levels that are 20dB below the official limit are not reported.



Site no. : 1# 966 Chamber Data no. : 63
 Dis. / Ant. : 3m ANT9120D 1-18G Ant. pol. : VERTICAL
 Limit : FCC PART 15 PEAK 2.4
 Env. / Ins. : Temp:23.6';Humi:56%;Press:101.52kPa
 Engineer : Viking
 EUT : AmazonBasics Wireless Keyboard with
 Touchpad for Smart TVs
 Power : DC 3V
 M/N : K4N-US
 Test Mode : TX 2440MHz

	Freq. (MHz)	Ant. Factor (dB/m)	Cable Loss (dB)	Amp Factor (dB)	Reading (dBUV)	Emission Level (dBUV/m)	Limits (dBUV/m)	Margin (dB)	Remark
1	2440.00	27.48	3.26	35.07	64.46	60.13	94.00	33.87	Average
2	2440.00	27.48	3.26	35.07	85.91	81.58	114.00	32.42	Peak
3	4880.00	32.18	4.73	35.14	35.73	37.50	74.00	36.50	Peak
4	7320.00	36.82	6.10	33.28	32.60	42.24	74.00	31.76	Peak
5	10316.00	39.23	10.20	34.34	29.39	44.48	74.00	29.52	Peak
6	13835.00	41.57	10.10	32.76	27.64	46.55	74.00	27.45	Peak
7	18000.00	44.70	12.64	31.56	19.51	45.29	74.00	28.71	Peak

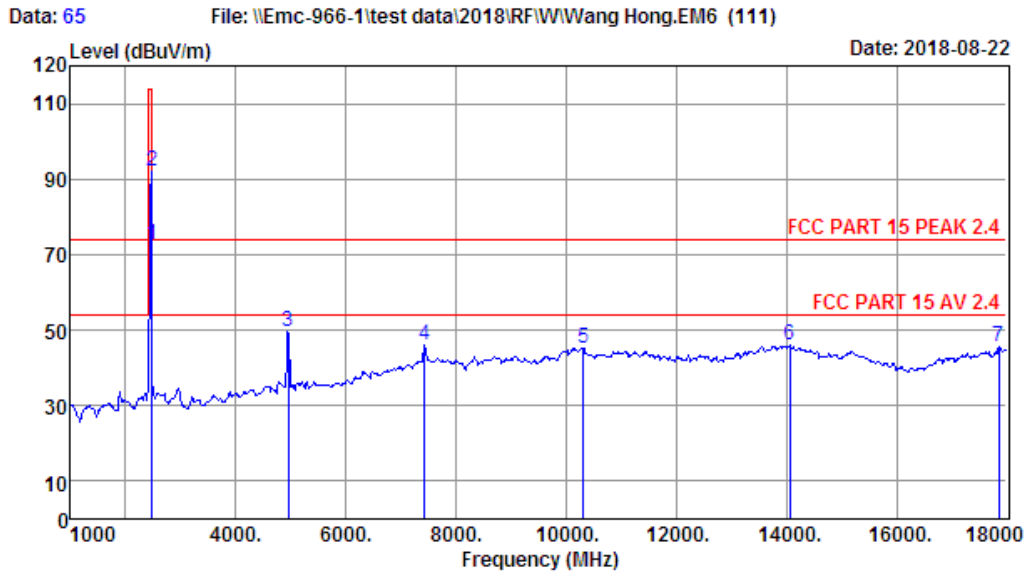
Remarks: 1. Emission Level= Antenna Factor + Cable Loss - Amp Factor + Reading.
 2. Margin= Limit - Emission Level.
 3. The emission levels that are 20dB below the official limit are not reported.



Site no. : 1# 966 Chamber Data no. : 64
 Dis. / Ant. : 3m ANT9120D 1-18G Ant. pol. : VERTICAL
 Limit : FCC PART 15 PEAK 2.4
 Env. / Ins. : Temp:23.6';Humi:56%;Press:101.52kPa
 Engineer : Viking
 EUT : AmazonBasics Wireless Keyboard with
 Touchpad for Smart TVs
 Power : DC 3V
 M/N : K4N-US
 Test Mode : TX 2474MHz

	Freq. (MHz)	Ant. Factor (dB/m)	Cable Loss (dB)	Amp Factor (dB)	Reading (dBUV)	Emission Level (dBUV/m)	Limits (dBUV/m)	Margin (dB)	Remark
1	2474.00	27.56	3.29	35.21	65.27	60.91	94.00	33.09	Average
2	2474.00	27.56	3.29	35.21	85.49	81.13	114.00	32.87	Peak
3	4948.00	32.31	4.79	35.22	37.67	39.55	74.00	34.45	Peak
4	7422.00	37.05	6.13	33.11	33.34	43.41	74.00	30.59	Peak
5	10350.00	39.24	10.10	34.30	30.56	45.60	74.00	28.40	Peak
6	14396.00	41.30	10.18	33.38	28.78	46.88	74.00	27.12	Peak
7	18000.00	44.70	12.64	31.56	19.42	45.20	74.00	28.80	Peak

Remarks: 1. Emission Level= Antenna Factor + Cable Loss - Amp Factor + Reading.
 2. Margin= Limit - Emission Level.
 3. The emission levels that are 20dB below the official limit are not reported.



Site no. : 1# 966 Chamber Data no. : 65
 Dis. / Ant. : 3m ANT9120D 1-18G Ant. pol. : HORIZONTAL
 Limit : FCC PART 15 PEAK 2.4
 Env. / Ins. : Temp:23.6';Humi:56%;Press:101.52kPa
 Engineer : Viking
 EUT : AmazonBasics Wireless Keyboard with
 Touchpad for Smart TVs
 Power : DC 3V
 M/N : K4N-US
 Test Mode : TX 2474MHz

	Freq. (MHz)	Ant. Factor (dB/m)	Cable Loss (dB)	Amp Factor (dB)	Reading (dBUV)	Emission Level (dBUV/m)	Limits (dBUV/m)	Margin (dB)	Remark
1	2474.00	27.56	3.29	35.21	77.10	72.74	94.00	21.26	Average
2	2474.00	27.56	3.29	35.21	96.46	92.10	114.00	21.90	Peak
3	4948.00	32.31	4.79	35.22	47.85	49.73	74.00	24.27	Peak
4	7422.00	37.05	6.13	33.11	36.02	46.09	74.00	27.91	Peak
5	10316.00	39.23	10.20	34.34	30.02	45.11	74.00	28.89	Peak
6	14056.00	41.65	10.13	32.95	27.03	45.86	74.00	28.14	Peak
7	17864.00	44.34	12.34	31.29	20.29	45.68	74.00	28.32	Peak

Remarks: 1. Emission Level= Antenna Factor + Cable Loss - Amp Factor + Reading.
 2. Margin= Limit - Emission Level.
 3. The emission levels that are 20dB below the official limit are not reported.

FCC ID:PRDKB32

18000MHz – 25000MHz

Pass

Note: The amplitude of spurious emission that is attenuated by more than 20dB below the permissible limit has no need to be reported.

4. 20 DB BANDWIDTH

4.1. Test Procedure

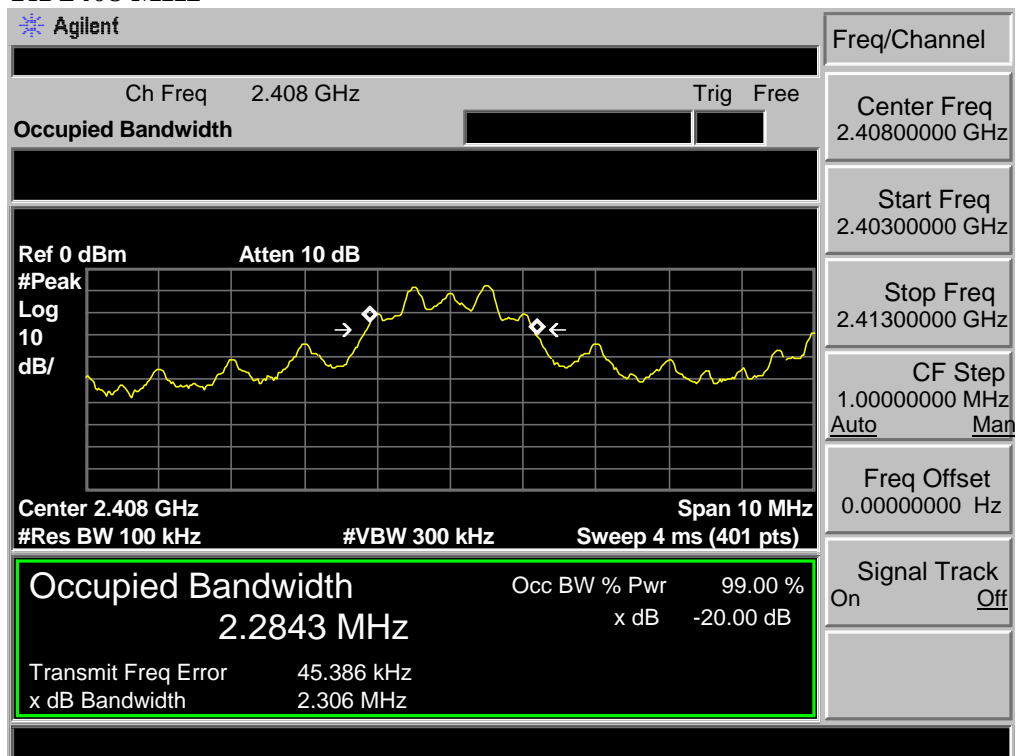
The transmitter output was coupled to a spectrum analyzer via a antenna. The bandwidth of the fundamental frequency was measured by spectrum analyzer with 100kHz RBW and 300kHz VBW. The 20dB bandwidth is defined as the total spectrum the power of which is higher than peak power minus 20dB.

4.2. Test Result

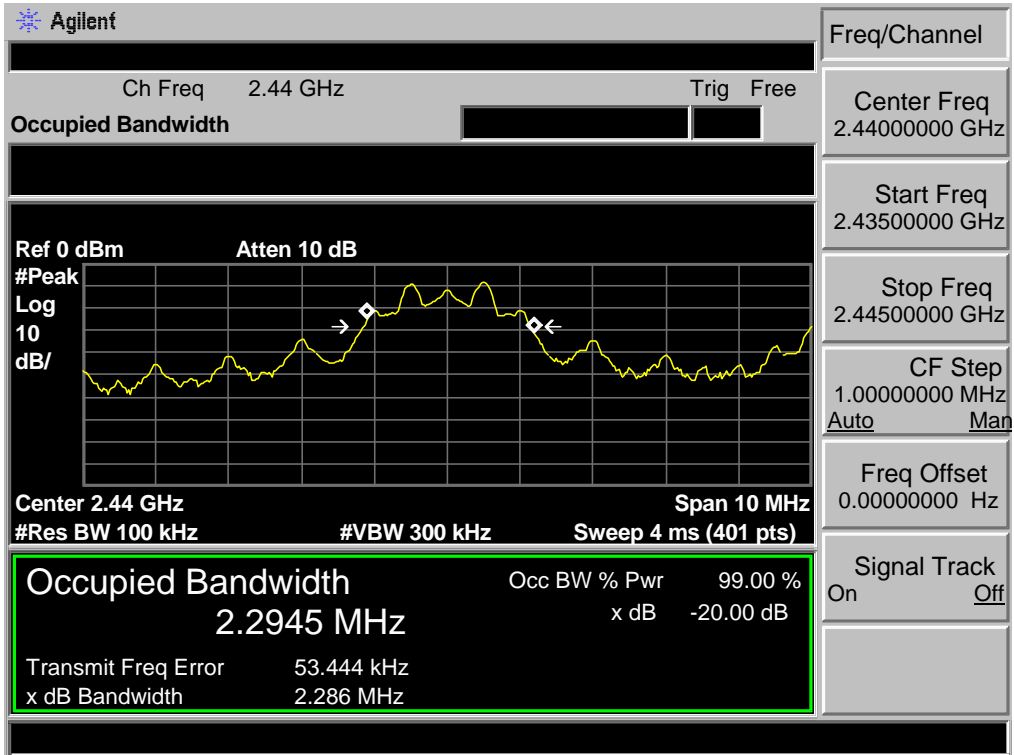
EUT: AmazonBasics Wireless Keyboard with Touchpad for Smart TVs				
M/N: K4N-US				
Test date: 2018-08-30		Test site: RF site		Tested by: Viking
Mode	Freq (MHz)	20dB Bandwidth (MHz)	Limit (kHz)	Conclusion
TX	2408	2.306	/	PASS
TX	2440	2.286	/	PASS
TX	2474	2.288	/	PASS

4.3. Test Data

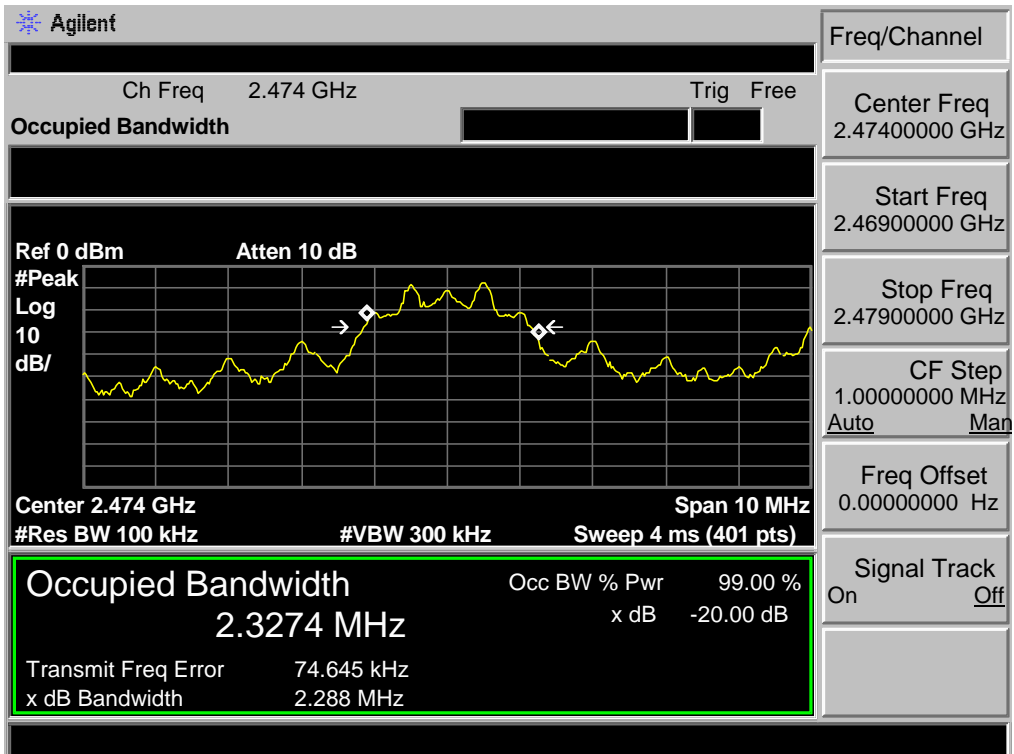
TX 2408 MHz



TX 2440 MHz

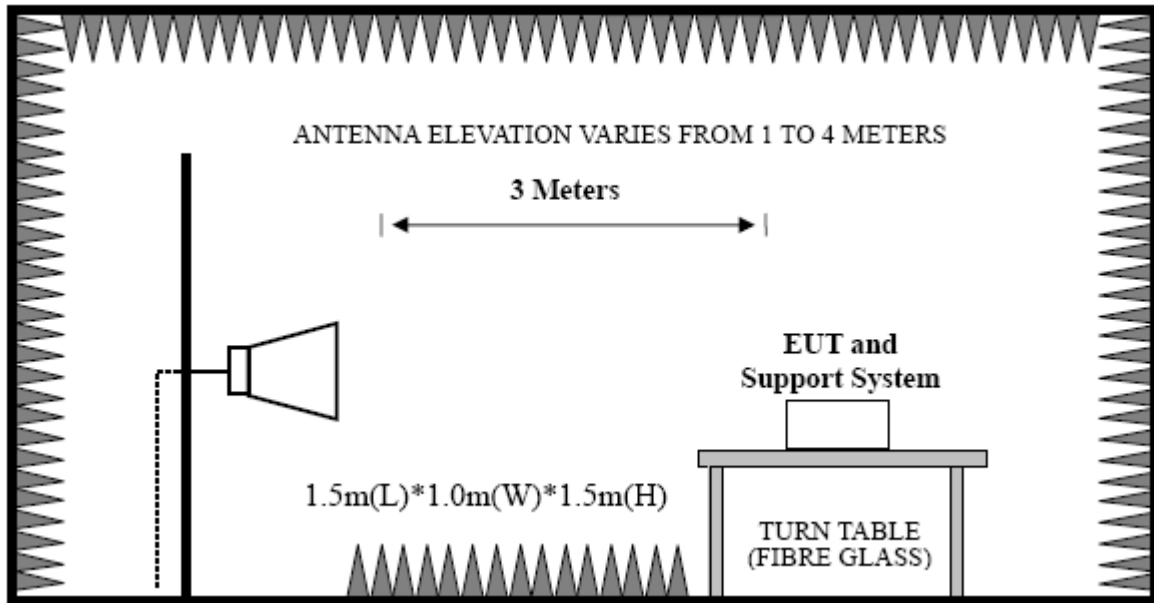


TX 2474 MHz



5. BAND EDGE COMPLIANCE

5.1. Block Diagram of Test setup



5.2. Test Procedure

EUT was placed on a turn table, which is 1.5 meter high above ground. The turn table can rotate 360 degrees to determine the position of the maximum emission level. Power on the EUT and let it working in test mode, then test it. EUT is set 3 meters away from the receiving antenna, which is mounted on a antenna tower. The antenna can be moved up and down between 1 meter and 4 meters to find out the maximum emission level. Both horizontal and vertical polarization of the antenna are set on test.

Set the spectrum analyzer in the following setting in order to capture the lower and upper band-edges of emissions

Peak : RBW = 1MHz, VBW = 1MHz, Detector=PEAK detector, Sweep time = auto.

AV : RBW = 1MHz, VBW = 10Hz, Detector=PEAK detector, Sweep time = auto .

The EUT position(X.-axis, Y-axis, Z-axis) were checked and worse case was happened in Y-axis position. So Y-axis position was chose for find measurement.

5.3. Test Result

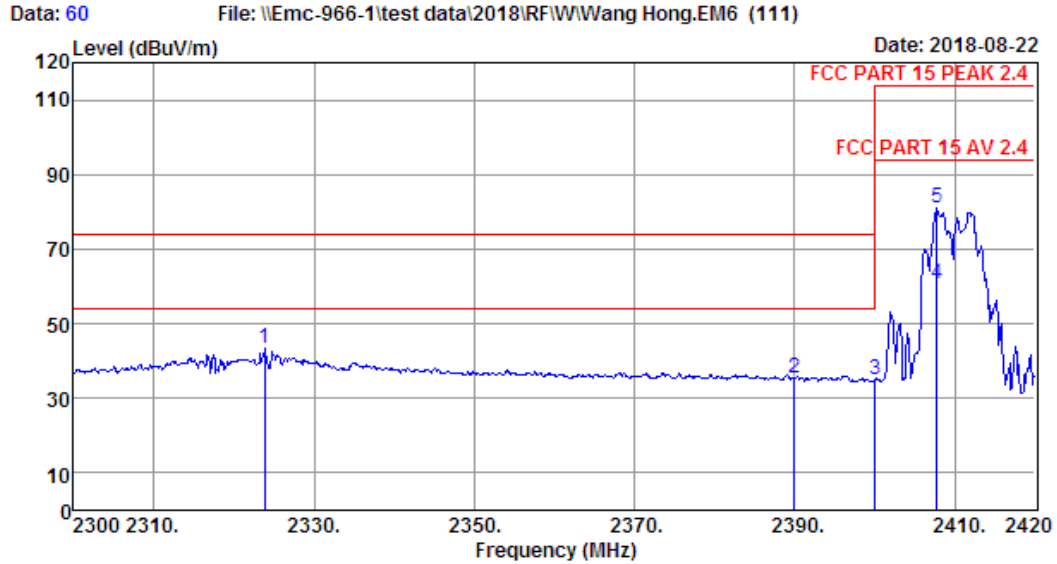
Pass.

Note: If the PK measured levels comply with average limit, then the average level were deemed to comply with average limit.

5.4. Test Data

EST Technology

Chilingxiang, Qishantou, Santun,
Houjie, Dongguan,Guangdong,China
Tel:+86-769-83081888
Fax:+86-769-83081878



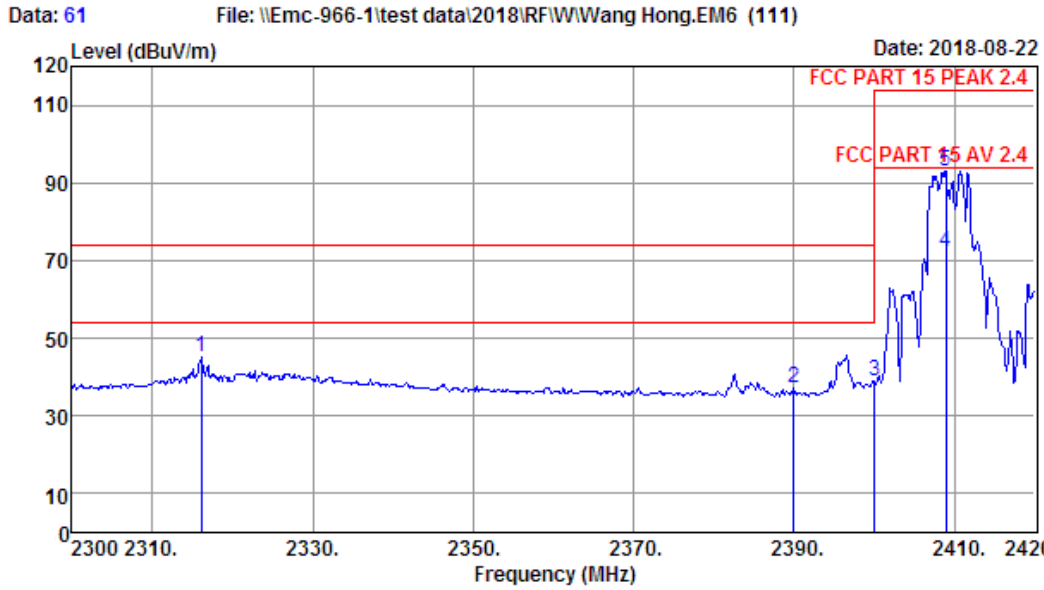
Site no. : 1# 966 Chamber Data no. : 60
 Dis. / Ant. : 3m ANT9120D 1-18G Ant. pol. : VERTICAL
 Limit : FCC PART 15 PEAK 2.4
 Env. / Ins. : Temp:23.6%;Humi:56%;Press:101.52kPa
 Engineer : Viking
 EUT : AmazonBasics Wireless Keyboard with
 Touchpad for Smart TVs
 Power : DC 3V
 M/N : K4N-US
 Test Mode : TX 2408MHz

	Freq. (MHz)	Ant. Factor (dB/m)	Cable Loss (dB)	Amp Factor (dB)	Reading (dBUV)	Emission Level (dBUV/m)	Limits (dBUV/m)	Margin (dB)	Remark
1	2323.88	27.19	3.15	34.60	47.61	43.35	74.00	30.65	Peak
2	2390.00	27.35	3.21	34.87	39.54	35.23	74.00	38.77	Peak
3	2400.00	27.35	3.21	34.94	39.15	34.77	74.00	39.23	Peak
4	2407.76	27.39	3.23	34.94	64.96	60.64	94.00	33.36	Average
5	2407.76	27.39	3.23	34.94	85.47	81.15	114.00	32.85	Peak

Remarks: 1. Emission Level= Antenna Factor + Cable Loss - Amp Factor + Reading.
 2. Margin= Limit - Emission Level.
 3. The emission levels that are 20dB below the official limit are not reported.

EST Technology

Chilingxiang, Qishantou, Santun,
Houjie, Dongguan, Guangdong, China
Tel: +86-769-83081888
Fax: +86-769-83081878



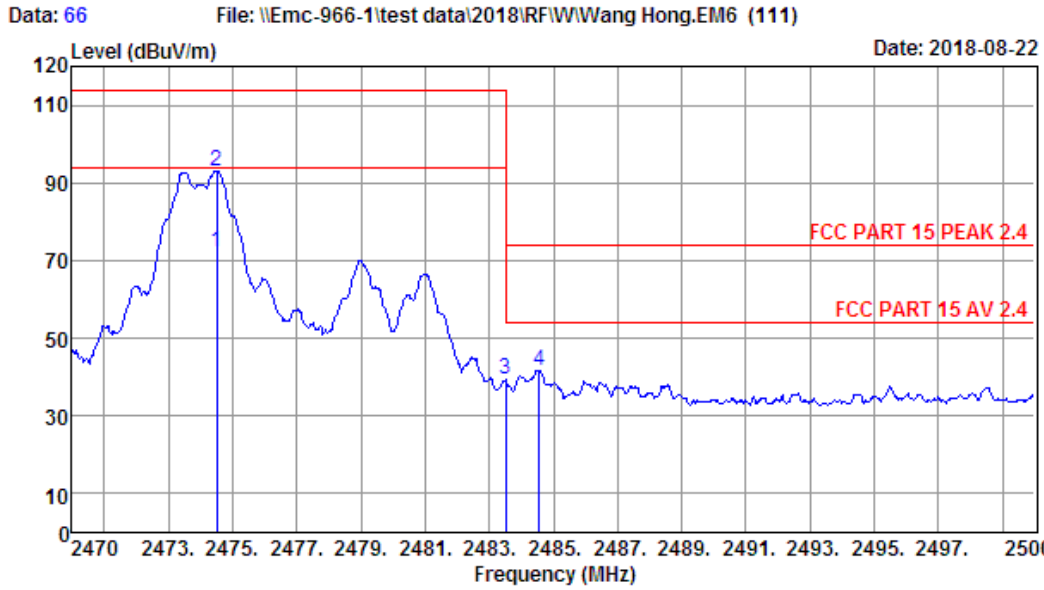
Site no. : 1# 966 Chamber Data no. : 61
 Dis. / Ant. : 3m ANT9120D 1-18G Ant. pol. : HORIZONTAL
 Limit : FCC PART 15 PEAK 2.4
 Env. / Ins. : Temp:23.6';Humi:56%;Press:101.52kPa
 Engineer : Viking
 EUT : AmazonBasics Wireless Keyboard with
 Touchpad for Smart TVs
 Power : DC 3V
 M/N : K4N-US
 Test Mode : TX 2408MHz

	Freq. (MHz)	Ant. Factor (dB/m)	Cable Loss (dB)	Amp Factor (dB)	Reading (dBUV)	Emission Level (dBUV/m)	Limits (dBUV/m)	Margin (dB)	Remark
1	2316.08	27.14	3.13	34.60	49.29	44.96	74.00	29.04	Peak
2	2390.00	27.35	3.21	34.87	41.51	37.20	74.00	36.80	Peak
3	2400.00	27.35	3.21	34.94	43.20	38.82	74.00	35.18	Peak
4	2408.96	27.39	3.23	34.94	76.45	72.13	94.00	21.87	Average
5	2408.96	27.39	3.23	34.94	97.48	93.16	114.00	20.84	Peak

Remarks: 1. Emission Level= Antenna Factor + Cable Loss - Amp Factor + Reading.
 2. Margin= Limit - Emission Level.
 3. The emission levels that are 20dB below the official limit are not reported.

EST Technology

Chilingxiang, Qishantou, Santun,
Houjie, Dongguan, Guangdong, China
Tel: +86-769-83081888
Fax: +86-769-83081878



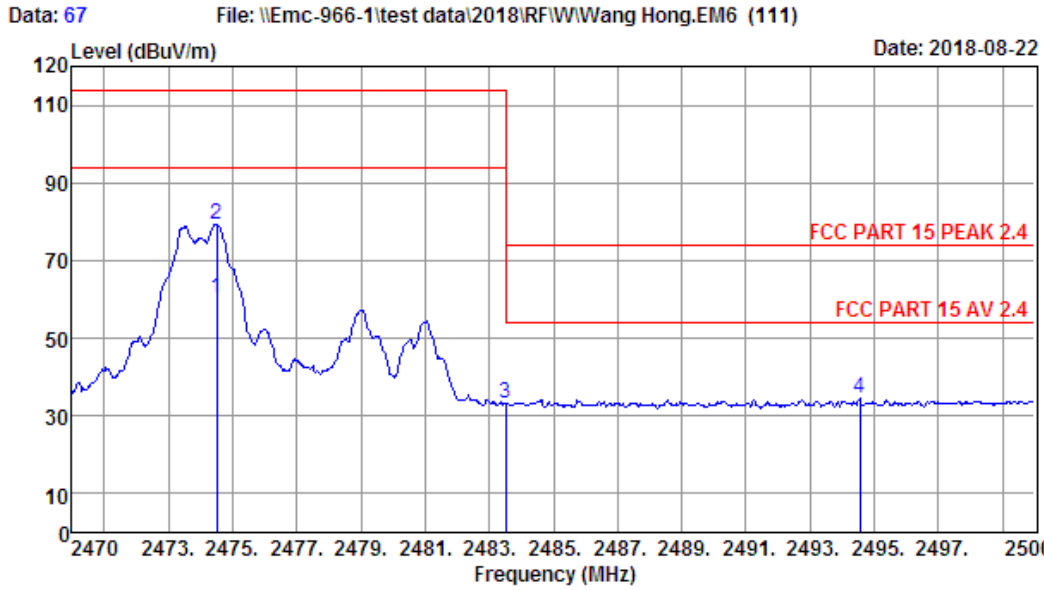
Site no. : 1# 966 Chamber Data no. : 66
 Dis. / Ant. : 3m ANT9120D 1-18G Ant. pol. : HORIZONTAL
 Limit : FCC PART 15 PEAK 2.4
 Env. / Ins. : Temp:23.6';Humi:56%;Press:101.52kPa
 Engineer : Viking
 EUT : AmazonBasics Wireless Keyboard with
 Touchpad for Smart TVs
 Power : DC 3V
 M/N : K4N-US
 Test Mode : TX 2474MHz

	Freq. (MHz)	Ant. Factor (dB/m)	Cable Loss (dB)	Amp Factor (dB)	Reading (dBuV)	Emission Level (dBuV/m)	Limits (dBuV/m)	Margin (dB)	Remark
1	2474.50	27.56	3.29	35.21	76.70	72.34	94.00	21.66	Average
2	2474.50	27.56	3.29	35.21	97.51	93.15	114.00	20.85	Peak
3	2483.50	27.56	3.29	35.21	43.80	39.44	74.00	34.56	Peak
4	2484.55	27.56	3.29	35.21	46.16	41.80	74.00	32.20	Peak

Remarks: 1. Emission Level= Antenna Factor + Cable Loss - Amp Factor + Reading.
 2. Margin= Limit - Emission Level.
 3. The emission levels that are 20dB below the official limit are not reported.

EST Technology

Chilingxiang, Qishantou, Santun,
Houjie, Dongguan, Guangdong, China
Tel: +86-769-83081888
Fax: +86-769-83081878



Site no. : 1# 966 Chamber Data no. : 67
 Dis. / Ant. : 3m ANT9120D 1-18G Ant. pol. : VERTICAL
 Limit : FCC PART 15 PEAK 2.4
 Env. / Ins. : Temp:23.6';Humi:56%;Press:101.52kPa
 Engineer : Viking
 EUT : AmazonBasics Wireless Keyboard with
 Touchpad for Smart TVs
 Power : DC 3V
 M/N : K4N-US
 Test Mode : TX 2474MHz

	Freq. (MHz)	Ant. Factor (dB/m)	Cable Loss (dB)	Amp Factor (dB)	Reading (dBuV)	Emission Level (dBuV/m)	Limits (dBuV/m)	Margin (dB)	Remark
1	2474.50	27.56	3.29	35.21	64.67	60.31	94.00	33.69	Average
2	2474.50	27.56	3.29	35.21	83.55	79.19	114.00	34.81	Peak
3	2483.50	27.56	3.29	35.21	37.76	33.40	74.00	40.60	Peak
4	2494.54	27.60	3.30	35.27	38.81	34.44	74.00	39.56	Peak

Remarks: 1. Emission Level= Antenna Factor + Cable Loss - Amp Factor + Reading.
 2. Margin= Limit - Emission Level.
 3. The emission levels that are 20dB below the official limit are not reported.

6. ANTENNA REQUIREMENTS

6.1. Limit

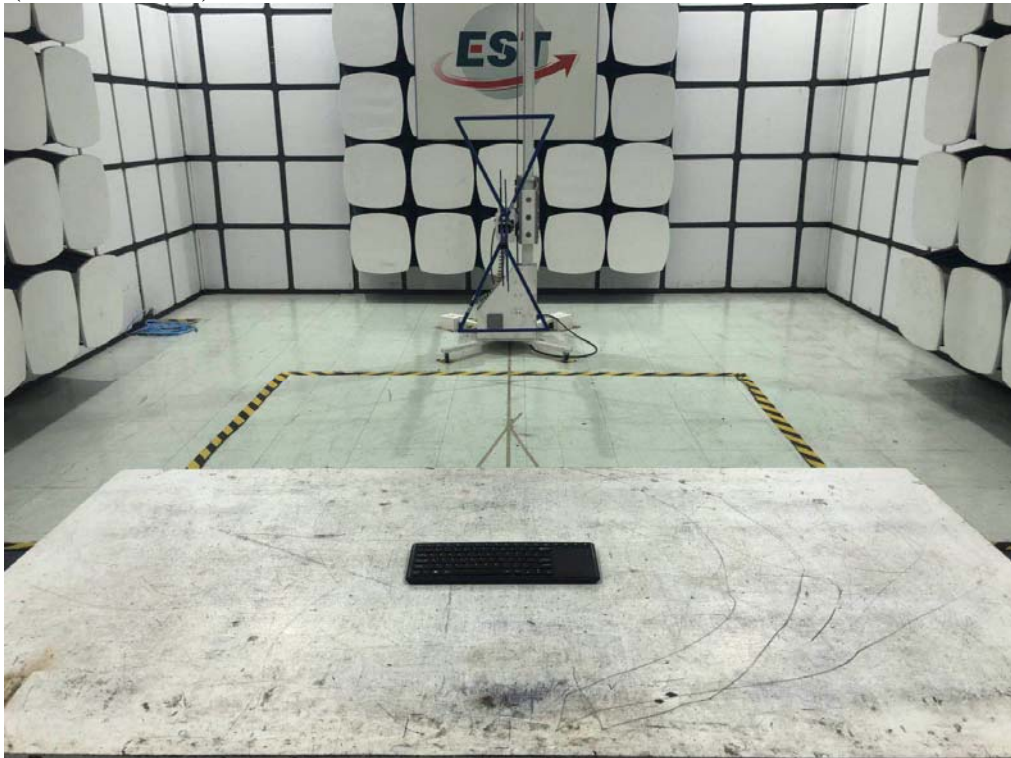
For intentional device, according to FCC 47 CFR Section 15.203, an intentional radiator shall be designed to ensure that no antenna other than that furnished by the responsible party shall be used with the device. And according to FCC 47 CFR Section 15.249 (b), if transmitting antennas of directional gain greater than 6dBi are used, the power shall be reduced by the amount in dB that the directional gain of the antenna exceeds 6dBi.

6.2. Result

The antennas used for this product are PCB Antenna and that no antenna other than that furnished by the responsible party shall be used with the device, the maximum peak gain of the transmit antenna is only -5dBi.

7. TESTSETUP PHOTO

Radiated Test (30-1000 MHz)



Radiated Test (Above 1GHz)



8. PHOTO OF EUT

External Photos
M/N: K4N-US



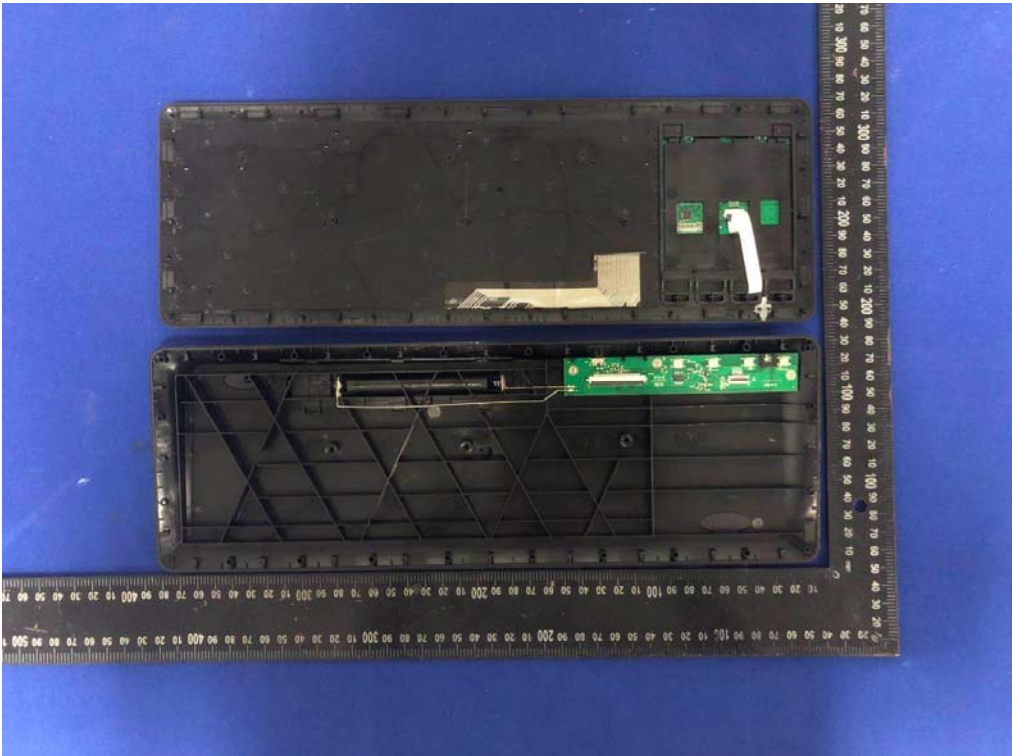
External Photos
M/N:K4N-US



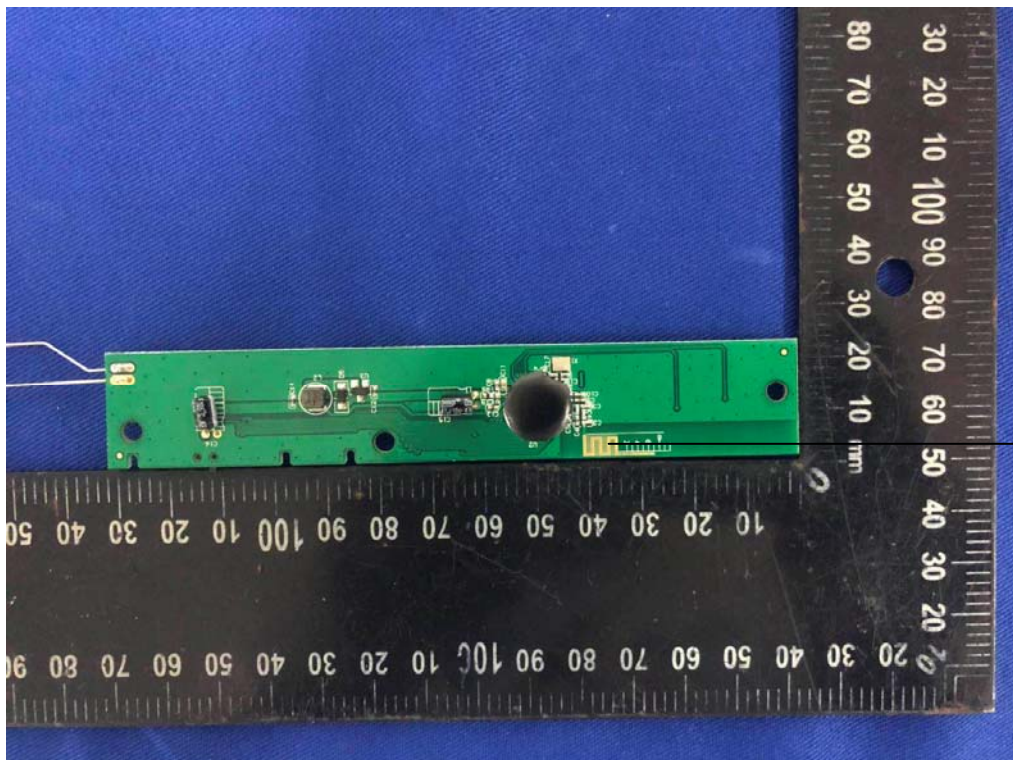
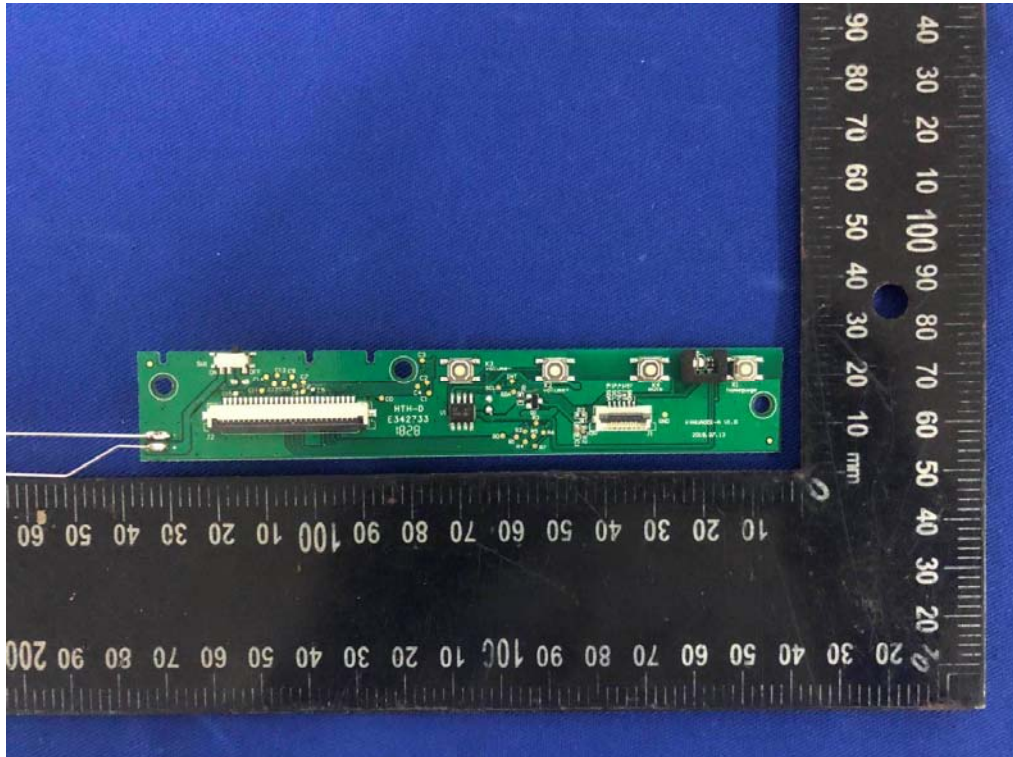
External Photos
M/N: K4N-US



Internal Photos
M/N: K4N-US



Internal Photos
M/N: K4N-US



Antenna

Internal Photos
M/N: K4N-US

