

# onn.

## Wireless Gaming Headset

Model: 100025012

### PRODUCT GUIDE

March 01, 2021\_V2

#### Federal Communication Commission Interference Statement

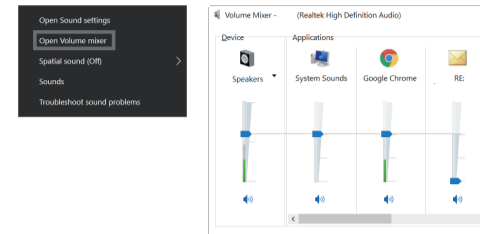
This equipment has been tested and found to comply with the limits for a Class B digital device, pursuant to Part 15 of the FCC Rules. These limits are designed to provide reasonable protection against harmful interference in a residential installation. This equipment generates, uses and can radiate radio frequency energy and, if not installed and used in accordance with the instructions, may cause harmful interference to radio communications. However, there is no guarantee that interference will not occur in a particular installation. If this equipment does cause harmful interference to radio or television reception, which can be determined by turning the equipment off and on, the user is encouraged to try to correct the interference by one of the following measures:

- Reorient or relocate the receiving antenna.
- Increase the separation between the equipment and receiver.
- Connect the equipment into an outlet on a circuit different from that to which the receiver is connected.
- Consult the dealer or an experienced radio/TV technician for help.

This device complies with Part 15 of the FCC Rules. Operation is subject to the following two conditions: (1) This device may not cause harmful interference, and (2) this device must accept any interference received, including interference that may cause undesired operation.

FCC Caution: Any changes or modifications not expressly approved by the party responsible for compliance could void the user's authority to operate this equipment.

3. Also check "Volume mixer", browser like Google also has volume control, make sure turn that to the max as well



#### Protect your hearing

Listening at high volume for long time periods may affect your hearing. Try to take a break between each session. Always remember that for any audio product, reduce the volume to the lowest before trying it with an audio source at the first time.

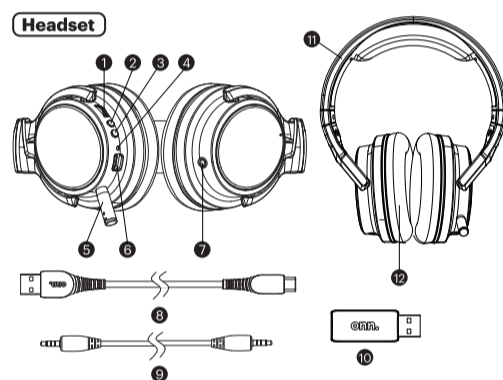
#### What's in the Box

- 1 Wireless Gaming Headset
- 1 USB Receiver
- 1 USB-A to USB-C® Braided Charging Cable 6 ft (1.8 m)
- 1 3.5 mm male to male audio cable 6 ft (1.8 m)
- 1 Quick Start Guide
- 1 User's Manual

Walmart Inc.,  
Bentonville, AR 72716

Need help?  
We're here for you every day from 7 a.m. – 9 p.m. CST.  
Give us a call at 1-888-516-2630

We'd love to hear from you.  
Scan with your Walmart app and let us know what you think.



#### Functional Instruction

- Volume Up / Down
- Microphone On / Off (Pairing)
- Power On / Off Switch
- LED Indicator
- Retractable Microphone
- USB-C® Charging Port
- 3.5 mm Jack for Microphone and Headphone (CTIA)
- USB-A to USB-C® Male Charging Cable (6 ft/1.8 m)
- 3.5 mm Male to Male Audio Cable (6 ft/1.8 m)
- 2.4 GHz wireless USB Receiver
- Adjustable Headband
- Soft Fabric Covered Earpads

USB-C is registered trademark of USB Implementers Forum, Inc.

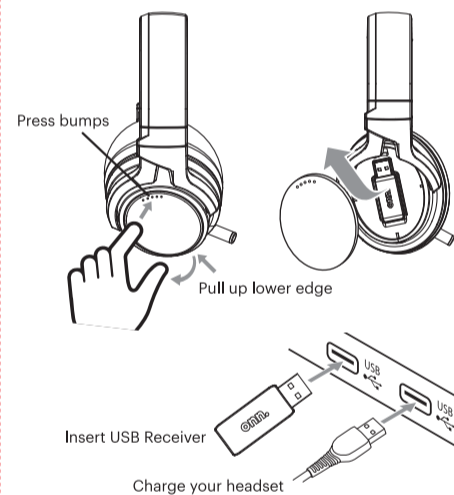
#### Specification

- Rechargeable Wireless Gaming Headset with USB Receiver (stores in earcup when not in use)
- Rechargeable with up to 12 hours of playtime per charge (at 50% volume)
- Lightweight, flexible and adjustable headband
- Ultra-soft, 90°rotatable earcups
- 50 mm speaker drivers
- Retractable boom microphone
- Earcup volume/mute/power controls
- Windows and Mac compatible
- Driver Impedance : 32Ω +/- 15%
- Driver Sensitivity : 115 +/- 3dB (at 1k Hz)
- Driver Frequency Response : 20 Hz - 20 KHz
- MIC Unit : Omnidirectional
- MIC Sensitivity : -42 +/- 3dB (at 1K Hz)
- MIC Frequency Response : 100 Hz - 10 KHz

1

#### Getting started

- **Charge your headset:** charge it to 100% battery power. Connect it to your computer with provided USB-A to USB-C® charging cable, LED indicator will light up in red during charging and go off when its done charging
- **Connect to your computer:** press bumps to open ear cup, pull up lower edge and remove ear cup, take out USB Receiver and insert it into your computer's USB port



2

- **Turn on power switch:** press power switch to turn on power, your computer should detect and connect to headset automatically (LED indicator will light up when power is on, press it again will turn off your headset)

Note 1: Don't forget to adjust volume in software and hardware (volume wheel)

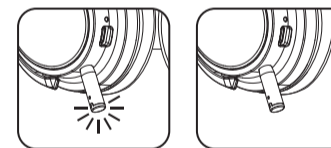
Note 2: Headset will turn off automatically after 15 minutes when no audio is playing to save battery life

Note 3: You can still play music when it's charging

#### LED Indicator:

Searching / Pairing	Slow flash in blue
Low battery	Fast flash in blue
Charging	Light up in red
Fully charged	Off
Power on	Light up in blue

Note 4: Microphone will light up in red when it is OFF (press microphone button to mute microphone)



Microphone Off

Microphone On

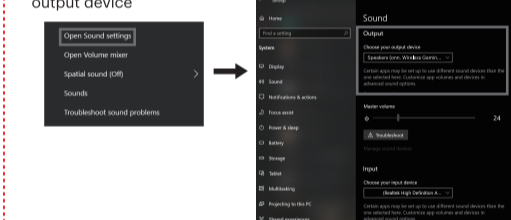
3

#### Troubleshooting

There is no sound?  
Try pairing again. Turn off your headset, unplug and replug in USB Receiver and turn on headset. LED indicator will start flashing, press Microphone On / Off (Pairing) switch for pairing. LED indicator will stop flashing after pairing is completed

There is still no sound after successful pairing?  
Go to the notification area (lower right corner of Windows desktop) Right click icon

Left click "Open Sound settings" and set your headset as the main output device



Volume is still low after finishing all steps above?  
Make sure your volume is turned to max including  
1. Volume wheel on headset  
2. Software (application) that you are playing music with (e.g. games or music player etc.)

4

Project Name: 100025012(NHT\_Wireless Gaming Headset) for Walmart USA-onn. Manual  
\_UPC-681131413206\_Outline\_20210303\_V2.ai

REV. 2

印刷順序：印單色，\*雙面印刷再彈簧折

DATE: 2021.03.03

紙質：雙交紙，70磅

比例1:1

—— 裁切線

----- 折線

尺寸：

未折合前-寬297mm x 長105mm

折合後-寬74.25mm x 長105mm

PROCESS COLORS

K

簽核：

製作者：Megan